

D6 XE

TRACK-TYPE TRACTOR



Net Power (1,700 rpm)

ISO 9249/SAE J1349

ISO 9249 (DIN)

161 kW (215 hp)

219 mhp

Operating Weight Ranges

VPAT

Push Arm

22 548 - 23 820 kg (49,708 - 52,512 lb)

22 403 - 24 184 kg (49,388 - 53,315 lb)

Cat® C9.3B engine meets U.S. EPA Tier 4 Final/EU Stage V/Korea Stage V emission standards.



The **Cat® D6 XE** is the world's first high drive Electric Drive dozer, offering you the highest level of productivity, fuel efficiency and ease of operation. With next-generation Electric Drive technology there are no gears to shift, so you experience constant power to the ground, greater agility and faster cycle times.

THE CAT® D6 XE

NEXT LEVEL VERSATILITY,
UNPRECEDENTED EFFICIENCY



TECHNOLOGY FEATURES TO FIT YOUR BUSINESS

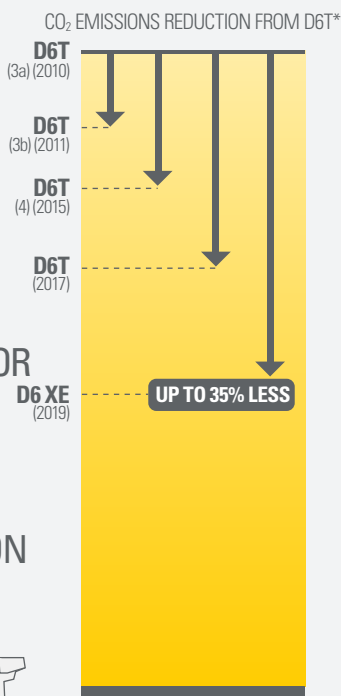
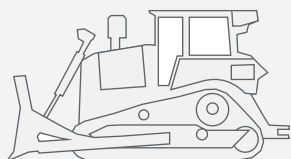
Your dozer is technology-ready so you can order technology packages from the factory, or easily upgrade later as your work demands it.

- + Package of Assist features gives you technology, like Cat Grade with Slope Assist™ and Steer Assist, that helps operators of varied skill levels get the job done faster and more easily.
- + Grade 3D with Assist package gives you all of the Assist features, plus 3D Grade and Steer Assist 3D. Get to design plan faster and with less operator effort so you can save time, money and fuel.
- + Remote Control ready cab enables dealer installation of the Cat Command system.



DECREASING CO₂ EMISSIONS FROM THE D6T TO THE D6 XE

- UP TO **25%** LOWER FUEL CONSUMPTION AND **25% LESS** CO₂ EMISSIONS WITH
- UP TO **45%** BETTER OPERATOR EFFICIENCY PRODUCES
- UP TO **35%** LESS CO₂ PER TON OF MATERIAL MOVED



*All comparisons to D6T (3a) (2010). Productivity, fuel and CO₂ emissions vary by application. CO₂ emissions calculations based on a reference work cycle using 2.2 U.S. gallons per hour of #2 U.S. diesel fuel based. Applies P/C/C005 methodology using U.S. EPA Emissions Hub emission factors. Includes DEF (diesel exhaust fluid) related CO₂. Fuel measurements are at 15°C. Estimated average fuel consumption improvements are based on tests or Product Link® data where available. Productivity improvements are based on test data.

UP TO 12% LOWER MAINTENANCE COST

Designed specifically to reduce your service and maintenance costs with updated components, longer service intervals and fewer scheduled maintenance tasks.

UP TO 35% MORE FUEL EFFICIENT

Electric Drive gives you the highest level of productivity and significantly lower fuel consumption.

UP TO 50% MORE PRODUCTIVITY WITH CAT TECHNOLOGY

A broad range of Assist and Grade technology choices help boost productivity so you get the most from your machine. Remote Flash and Remote Troubleshoot help improve job site efficiency by saving you time.

All comparisons to 2014-2016 3-speed D6T (U.S. EPA Tier 4 Final/EU Stage IV). Maintenance comparisons to D6T over initial 10,000 hours of operation.



ELECTRIC DRIVE ELEVATED

NEXT GENERATION PERFORMANCE

Meet the world's first high drive Electric Drive dozer, delivering cost and productivity benefits to your business in a refined package that is more simple, efficient and robust.

TOP EFFICIENCY

Get the highest level of productivity and up to 35% better fuel efficiency – do more work done in less time, and with significantly lower fuel consumption.

GREATER AGILITY

Harness the constant power to the ground and added steering capability of this tractor for faster cycle times. Make lock-track pivot turns and counter rotate in gear for the agility needed in tight spaces.

EASY TO OPERATE

With Electric Drive, there are no gears to shift. Just set the ground speed and the dozer automatically optimizes for the application. Best-in-class operator sound levels give you added comfort and safety.

All comparisons to 2014-2016 3-speed D6T (U.S. EPA Tier 4 Final/EU Stage IV).

SIMPLE, EFFICIENT, ROBUST

More than a decade of experience brings you the next generation in Electric Drive systems.

Electric drive motor works at peak efficiency at a wide range of ground speeds. The whole system performs reliably in the most demanding dozer applications.

Simplified system uses Switched Reluctance technology with a simple rotor design. Today's Electric Drive is more robust, generates less heat and is more power dense.

Well over 50,000 hours of pre-production field testing, along with proprietary advances in lab testing at the component level, are behind this updated Electric Drive power train.



3D GRADE CONTROL
BOOST YOUR PRODUCTIVITY

- + Factory integrated **Cat Grade with 3D** uses GNSS/GPS to control the blade so you can get to design the plan faster.
- + Cat Grade with 3D has no masts - low profile antennas are integrated into the cab roof and GNSS/GPS receivers are mounted inside the cab for better protection.
- + Automatically follow guidance lines from design plans with **Steer Assist 3D**. Stay on curb lines, centerlines, bottom of slope, etc., without operator effort. Track steering is used under light loads and blade tilt steering may be added under heavy loads.
- + Grade operator interface is intuitive and easy to use: 10-inch (254 mm) touchscreen, Android OS platform, operates like a smart phone.
- + Cab is Third-party Grade Control ready, equipped with CAN interface, harness pass throughs and mounting features to make it easier to install the grade control system of your choice.
- + All Cat Grade systems are compatible with radios and base stations from Trimble, Topcon, and Leica.
- + Already invested in a grade infrastructure? You can install grade systems from Trimble, Topcon, and Leica onto the machine.

CAT® TECHNOLOGY IS LIKE HAVING A
COACH IN THE CAB

PLAY YOUR BEST

Optimal efficiency, fewer operator inputs

KNOW THE SCORE

Real-time Feedback



NO FOUL

Save rework, time, materials

OPERATOR HELPERS

BUILT RIGHT IN

Assist technology features help make work easier, especially for less experienced operators. Some blade and steering functions are automated so newer operators can work at productivity levels closer to their veteran counterparts. Seasoned operators can enjoy reduced effort, along with faster, more accurate results. Attachment Ready Option (ARO) with Assist bundles these features into one productivity-boosting package.



NO GPS SIGNAL? NO PROBLEM

Cat Grade with Slope Assist automatically maintains pre-established blade position without a GNSS/GPS signal – no additional hardware or software needed. For machines with 3D, operators can easily switch back and forth from full 3D automatics to Slope Assist.

SMOOTH OPERATOR

Stable Blade works seamlessly with operator inputs to help produce a smoother surface when operating manually.

STAY ON TRACK

Steer Assist automates track and blade tilt steering. Helps reduce operator fatigue by automatically maintaining straight travel with light loads or heavy loads on flat ground and side slopes. Helps reduce steering inputs up to 75%. No GNSS/GPS required.

EASY UPGRADES

Attachment Ready Option (ARO) provides wiring and mounting provisions for dealer installation of Grade with 3D, Accugrade, UTS, or other grade control systems.

KEEP PUSHING FORWARD

These Assist features help you make the most of every pass.

Blade Load Monitor gives you real-time feedback on current load versus the optimal blade load based on your ground conditions. Actively monitors machine load and track slip to help you reach optimal pushing capacity.*

Traction Control automatically reduces track slip to save you time, fuel and track wear.*

AutoCarry automates blade lift to help you maintain consistent blade load and reduce track slip.*

Slope Indicate is included in the main machine display and shows side slope and uphill/downhill grades to help operators with slope work.

**Feature not operational indoors or in areas where a GNSS/GPS signal is not available.*

PROVEN ADVANTAGE

WORK HARDER

EASIER

Cat Assist and Grade technologies work in the background to help dozer operators of varied skill levels and are especially beneficial to less experienced operators. To demonstrate just how much these built-in technology features help, Caterpillar put them to the test. Two novice operators and two expert operators took on three challenges. Each operator completed three runs of each task – one in manual, one using Assist technology features, and one using Assist plus Cat Grade with 3D. The team measured productivity¹, efficiency², completion time, final surface quality and operator inputs.

SLOT DOZING

Productivity and efficiency – novice operators went from 9% lower productivity and efficiency than the experts in manual to matching the experts when using Assist.

TRUCK DUMP SPREADING/ GRADING IN SAND

Completion time – novice operators took 49% more time than the experts in manual and narrowed the gap to 17% using Assist and to 9% by adding Grade.

Blade inputs – novice operator blade inputs were reduced 45% with Assist, and 55% with Assist plus Grade. Expert operator blade inputs were reduced 32% with Assist, and 53% with Assist plus Grade.

Surface quality – novice operator surface quality improved up to 51% using technology while expert operator surface quality improved up to 27% using technology. Novice operators using technology produced similar surface quality to the expert operators in manual.

SIDE SLOPE/STEER ASSIST

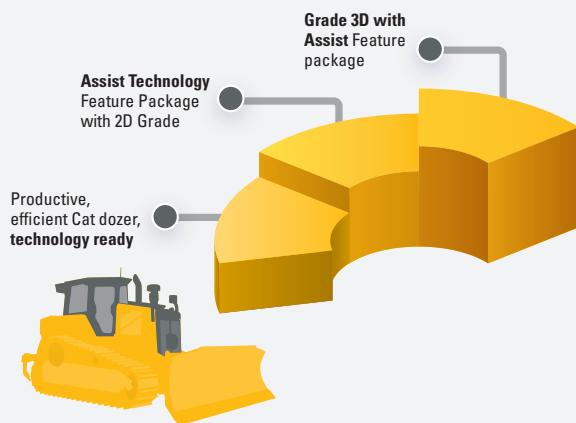
Steering inputs – novice and expert operator steering inputs reduced by 75% in forward and by 67% combining forward and reverse.

¹ Material moved per hour

² Material moved per unit of fuel/diesel exhaust fluid (DEF)
Study conducted by Caterpillar, August 2022

LEVEL UP

CHOOSE THE RIGHT LEVEL OF TECHNOLOGY TO FIT YOUR BUSINESS AND BUDGET. ORDER FROM THE FACTORY OR UPGRADE LATER.



TECHNOLOGY PACKAGES THAT HELP BOOST
TIME / MONEY / FUEL SAVINGS

COME ON IN AND MAKE YOURSELF COMFORTABLE

Step into a spacious cab that resets the industry standard for operator comfort, visibility and ease of operation. Integrated Rollover Protective Structure (ROPS) leaves plenty of glass area for all-around visibility. Clean sight lines along the hood give you an excellent view to the blade.



STAY IN TOUCH

10-inch (254 mm) touchscreen main display is easy to use, with a great view of machine settings and features. The standard high-definition rearview camera shows prominently in the display and includes backup lines to guide you.

WORK SPACE

A wide air-suspension seat gives you plenty of adjustments. Enjoy ample storage space, along with heating/cooling to help keep you more comfortable and reduce window fogging/frosting too. Powered precleaner option improves cabin pressurization to help keep more dirt out.

ON-BOARD HELP

Key Features button in the display gives you a machine overview, along with helpful operating tips. Learn more about technology and machine features that help you get the most from your dozer.

POWER TO MOVE DIRT

FINESSE FOR BETTER GRADING



BETTER BALANCE

Stronger, lighter VPAT structure is redesigned to give you better balance for grading. No need for a rear implement or counterweight.

BLADE VERSATILITY

Pick a beefed-up push arm bulldozer with plenty of dirt moving power or a purpose-built 6-way VPAT blade. Cat VPAT blades give you class-leading range of motion so you can handle challenging jobs like trenching and backfilling. The VPAT blade stays level when angled so you get a smoother grade.

LOWER GROUND PRESSURE

Wide-gauge LGP VPAT is purpose-built and equipped with 915 mm (36 in) centered shoes. This adds up to 34 kPa (5 psi) ground pressure to help you take on soft footing.

GRADE FASTER

Grade faster – in the 2.5-3.0 speed range – without sacrificing quality. Wider LGP blade means fewer passes. Finish grading undercarriage option (10-roller) helps you achieve smoother grades, at higher speeds, even in difficult surfaces like sand and gravel.

All comparisons to 2014-2016 3-speed D6T (U.S. EPA Tier 4 Final/EU Stage IV).

CUTTING EDGE PERFORMANCE

Optional Cat FirstCut Cutting Edges for SU blades help you move material faster, especially in hard ground. Patented design moves more material per pass – increases payload mass by up to 35%*.

- + Easier blade penetration in hard/frozen ground, moderate rock
- + Loads blade faster– aids blade control, load retention, traction – reduces track slip, helps improve undercarriage life
- + Up to 17% productivity improvement
- + Equal wear life/life cycle cost* – no mid-life edge flip or end bit replacement required, reducing down time for maintenance
- + Built-in wear indicators, drilled and tapped holes for safer installation, interchangeable with traditional edges
- + Versatility – on-plane cutting system allows finish grading

*Compared to standard cutting edges

EFFICIENT AND SIMPLE

The D6 XE's Electric Drive Power Train has

90%
FEWER

moving parts than a traditional powershift transmission

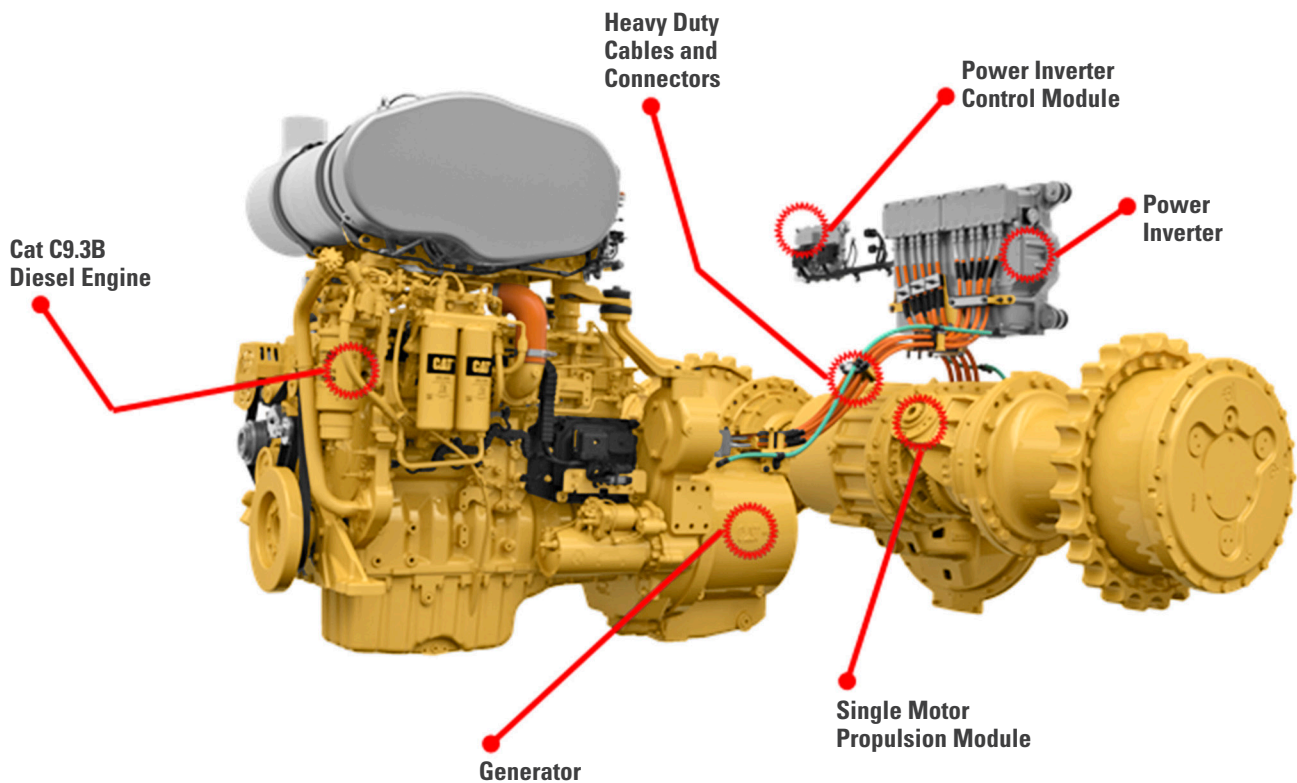
FEWER MOVING PARTS MEANS A SIMPLER SYSTEM
AND REDUCED MAINTENANCE COSTS FOR YOU

SIMPLE SERVICE ACCESS

High drive allows Electric Drive power train to slide out the back of the dozer like traditional machines. Get to the power electronics through a panel in the cab. If you ever need to access the generator, the cab can be removed in about 30 minutes.

EASY DIAGNOSTICS

Next generation Electric Drive features simplified diagnostics via Electronic Technician. Power electronics are serviceable for lower cost. Plus, Electric Drive has fewer moving parts, fewer components to replace and a longer design life to rebuild than a standard powershift transmission.



LOWER MAINTENANCE COST

LESS MAINTENANCE TIME



SPEND LESS

Fewer filters and service points, along with longer service intervals, save you time and money on routine maintenance. Standard reversing fan extends time between core clean-outs and helps reduce debris for less system wear and tear.

GAIN DURABILITY

Cat C9.3B engine boosts durability with a simplified emissions reduction system and a redesigned fuel system.

GET BACK TO WORK

Grouped service points, modular component design and easy access to routine maintenance points save you time every day. Quick access floor plate option gives you tool-less access for easier belly pan clean out. If needed, the cab can be removed in about 30 minutes, compared to 4 hours on previous models. Standard rear ladder puts fueling, filter changes and rear window cleaning in easy reach. Ground-level access to optional fast fuel fill and maintenance points. Grab rail on both sides of cab roof and tie offs add to your safety.

All comparisons to 2014-2016 3-speed D6T (U.S. EPA Tier 4 Final/EU Stage IV).

REDUCE UNDERCARRIAGE COSTS

Choose the ideal undercarriage to match your job site conditions to help save money and maximize service life.

- + Heavy Duty Extended Life undercarriage - HDXL DuraLink™ - offers up to 20% more seal life in high impact conditions.
- + Cat Abrasion undercarriage for high abrasion, low impact jobsites. Design offers double the seal life and eliminates bushing turns, reducing your costs up to 50% per hour compared to traditional undercarriage.
- + Common structures for Heavy Duty and Cat Abrasion undercarriage enable changes from one to the other.

CAT EQUIPMENT MANAGEMENT TAKES THE GUESSWORK OUT OF MANAGING YOUR EQUIPMENT

Getting the most out of your equipment requires hundreds of decisions, every day. Cat Equipment Management gives you access to all the data you need to keep your equipment on the job site and earning money. You can track equipment location and hours, monitor machine use and health, then take informed action that will keep your operation running smoothly, efficiently and profitably.

CAT PRODUCT LINK™ AND VISIONLINK®

Product Link™ collects data automatically from your assets – any type and any brand. Access information anytime, anywhere with VisionLink® – and use it to make informed decisions that boost productivity, lower costs, simplify maintenance and more. Satellite and/or cellular subscriptions are available.



REMOTE SERVICES

The Cat App helps you manage your assets – at any time – right from your smartphone. See fleet location and hours, get critical required maintenance alerts and even request service from your local Cat dealer.

- + **Remote flash** – get software updates remotely.
- + **Remote troubleshoot** – remote diagnostic testing helps pinpoint potential issues, saving time and money.
- + **Operator ID** lets you track machine operation by individual operator using the main display and Product Link.



REMOTE CONTROL READY

When dozers work in hazardous mining and earthmoving applications, the Command for Dozing option helps improve safety and efficiency. Operators control the machine using a line-of-sight console or a remote operator station. Deep integration with machine systems enables smooth, precise control for maximum efficiency and productivity.

With the line-of-sight console, take advantage of the dozer's built-in operator assist features. The remote operator station also allows full use of Grade and Assist technology features for even greater productivity.



Please consult your Cat dealer for regional availability.

SPECIAL ARRANGEMENTS

PURPOSE-BUILT FOR TOUGH TASKS

EQUIPPED FOR THE JOB

Factory guarding, seals and cab features help protect your machine and operator in especially harsh conditions. Insulated Clean Emissions Module and thermal shields add protection. High debris cooling system, automatic reversing fan help with cleanout.



FORESTRY AND LAND CLEARING

Updated sweeps lead the list of features designed to help protect your dozer from damage and debris build-up. Specialized track shoes plus woodchip and coal blades are matched to the job. Precleaner and roof-mounted filter help protect against dust and debris.

WASTE HANDLER

Take on landfill and transfer station work with confidence. Robust guarding, striker bars and seals help protect against impact, airborne debris and wrapping. Components are designed for easy cleanout, and air handling systems deliver cleaner air to the machine and to the operator. Specialized blades, track shoes and screens add to your productivity.



TECHNICAL SPECIFICATIONS

See cat.com for complete specifications.

ENGINE		
Powertrain	Electric Drive	
Engine	Cat® C9.3B	
Emissions	U.S. EPA Tier 4 Final, EU Stage V, Korea Stage V	
Net Power (1,700 rpm)		
ISO 9249/SAE J1349	161 kW	215 hp
ISO 9249 (DIN)	219 mhp	
<ul style="list-style-type: none"> Net power advertised is the power available at the engine flywheel when the engine is equipped with a fan, air cleaner, clean emissions module and alternator. Advertised power is tested per the specified standard in effect at the time of manufacture. Cat diesel engines are required to use ULSD (ultra-low sulfur diesel fuel with 15 ppm of sulfur or less) or ULSD blended with the following lower-carbon intensity fuels up to: <ul style="list-style-type: none"> 20% biodiesel FAME (fatty acid methyl ester)* 100% renewable diesel, HVO (hydrotreated vegetable oil) and GTL (gas-to-liquid) fuels <p>Refer to guidelines for successful application. Please consult your Cat dealer or "Caterpillar Machine Fluids Recommendations" (SEBU6250) for details.</p> <p>* Engines with no aftertreatment devices can use higher blends, up to 100% biodiesel (for use of blends higher than 20% biodiesel, consult your Cat dealer).</p>		

BLADE	CAPACITY	WIDTH
SU	5.7 m³ 7.5 yd³	3312 mm 10.9 ft
LGP SU	5.8 m³ 7.6 yd³	3613 mm 11.9 ft
LGP S	3.8 m³ 5.0 yd³	4063 mm 13.3 ft
VPAT	4.1 m³ 5.4 yd³	3680 mm 12.1 ft
LGP VPAT (30-in)	4.5 m³ 5.9 yd³	4000 mm 13.1 ft
LGP VPAT (36-in)	4.9 m³ 6.5 yd³	4340 mm 14.2 ft

SERVICE REFILL CAPACITIES		
Fuel Tank	341 L	90 gal
Diesel Exhaust Fluid (DEF) Tank	28 L	7.4 gal

AIR CONDITIONING SYSTEM
The air conditioning system on this machine contains the fluorinated greenhouse gas refrigerant R134a (Global Warming Potential = 1430). The system contains 1.36 kg of refrigerant which has a CO ₂ equivalent of 1.946 metric tonnes.

CONFIGURATION	D6 XE	D6 XE LGP (30 IN)	D6 XE LGP (36 IN)
Operating Weight ¹	22 403 kg (49,388 lb)	23 143 kg (51,020 lb)	24 184 kg (53,315 lb)
Ground Pressure	55 kPa (8.0 psi)	45 kPa (6.6 psi)	37 kPa (5.3 psi)
Machine Height	3.19 m (125.5 in)	3.19 m (125.5 in)	3.24 m (127.5 in)
Length of Machine without Blade	4.73 m (186.2 in)	4.73 m (186.2 in)	5.04 m (198.4 in)
Ground Clearance	361 mm (14.2 in)	361 mm (14.2 in)	395 mm (15.6 in)
Track Gauge	1.93 m (76 in)	2.08 m (82 in)	2.29 m (90 in)
Width over Trunnions	2.69 m (106 in)	2.99 m (118 in)	3.49 m (137.4 in)
Width across End Bits	3.30 m (10.83 ft)	3.61 m (11.84 ft)	4.06 m (13.32 ft)
Width across End Bits, Angled	—	—	—
Width of Standard Track Shoe	610 mm (24 in)	760 mm (30 in)	915 mm (36 in)
Length of Track on Ground	2.96 m (116.7 in)	2.96 m (116.7 in)	3.25 m (127.8 in)
CONFIGURATION	D6 XE VPAT	D6 XE LGP (30 IN) VPAT	D6 XE LGP (36 IN) VPAT
Operating Weight ¹	22 548 kg (49,708 lb)	23 285 kg (51,333 lb)	23 820 kg (52,512 lb)
Ground Pressure	49 kPa (7.2 psi)	41 kPa (5.9 psi)	35 kPa (5.1 psi)
Machine Height	3.19 m (125.5 in)	3.24 m (127.5 in)	3.24 m (127.5 in)
Length of Machine without Blade	5.13 m (202.1 in)	5.13 m (202.1 in)	5.13 m (202.1 in)
Ground Clearance	422 mm (16.6 in)	395 mm (15.6 in)	383 mm (15.1 in)
Track Gauge	2.08 m (82 in)	2.29 m (90 in)	2.39 m (94 in)
Width over Trunnions	—	—	—
Width across End Bits	3.68 m (12.07 ft)	4.00 m (13.12 ft)	4.34 m (14.24 ft)
Width across End Bits, Angled	3.36 m (11.02 ft)	3.65 m (11.99 ft)	3.97 m (13.02 ft)
Width of Standard Track Shoe	610 mm (24 in)	760 mm (30 in)	915 mm (36 in)
Length of Track on Ground	3.25 m (127.8 in)	3.36 m (132.1 in)	3.36 m (132.1 in)

¹With Multi-Shank Ripper (three shanks) add 1696 kg (3,739 lb).

For complete specifications and offerings, please reference the Technical Specifications document at www.cat.com or consult your local Cat dealer.

STANDARD & OPTIONAL EQUIPMENT

Standard and optional equipment may vary. Consult your Cat dealer for details.

POWERTRAIN	STANDARD	OPTIONAL
Electric Drive	•	
Cat C9.3B diesel engine	•	
Double reduction planetary final drives	•	
Hydraulic reversing fan	•	
OPERATOR ENVIRONMENT	STANDARD	OPTIONAL
Fully redesigned cab, sound suppressed, with Integrated Roll Over Protective Structure (IROPS)	•	
Full-color 10-inch (254 mm) liquid crystal touchscreen main display	•	
Integrated rearview camera	•	
Adjustable operator controls/armrests	•	
Added storage areas	•	
Cloth seat	•	
Deluxe leather heated/ventilated seat		•
Communication radio ready	•	
Lights – 6 LED	•	
Premium lights – 12 LED		•
Integrated warning lights		•
Powered precleaner		•
CAT TECHNOLOGY	STANDARD	OPTIONAL
Slope Indicate	•	
ARO with Assist Package		•
- ARO		
- Slope Assist		
- Steer Assist		
- Stable Blade		
- Blade Load Monitor		
- Traction Control		
- AutoCarry		
Grade 3D with Assist Package		•
- Full-color 10-inch (254 mm) touchscreen grade display		
- Steer Assist 3D		
- Grade receivers and antennas		
- Grade Software Enabled Attachment (SEA)		
- ARO with Assist package features		
Third Party Grade Control Ready Cab	•	
Compatibility with radios and base stations from Trimble, Topcon and Leica	•	
Capability to install 3D grade systems from Trimble, Topcon and Leica	•	
Product Link™ – Cellular	•	
Product Link – Dual Cellular/Satellite		•
Remote flash/troubleshoot	•	
Operator ID	•	
Machine Security – Passcode	•	
Machine Security – Bluetooth		•
Remote Control Ready	•	
Cat Command for Dozing		•

BLADES	STANDARD	OPTIONAL
Semi-Universal		•
VPAT		•
Straight blade		•
Angle blade		•
Foldable VPAT – under 3 m (9.9 ft) transport width (not available in all regions)		•
Waste/Landfill		•
UNDERCARRIAGE	STANDARD	OPTIONAL
Heavy Duty (HDXL with DuraLink™) or Cat Abrasion™		•
10-Roller Fine Grading undercarriage		•
SERVICE AND MAINTENANCE	STANDARD	OPTIONAL
Fast fuel fill ready		•
Fast fuel pump		•
Refilling fuel pump (EU only)		•
Rear access ladder	•	
Shovel holder	•	
Ground level service center	•	
30-minute cab removal	•	
High-speed oil change		•
Underhood work light	•	
HYDRAULICS	STANDARD	OPTIONAL
Independent steering and implement pumps	•	
Load sensing hydraulics	•	
ATTACHMENTS	STANDARD	OPTIONAL
Ripper-ready rear hydraulics	•	
Ripper and winch-ready rear hydraulics		•
High lift ripper with straight or curved shanks		•
Winch		•
Drawbar		•
Counterweights		•
Side screens		•
Rear screen – hinged or fixed		•
Sweeps		•
Forestry and Waste Special Arrangements		•

Not all features are available in all regions. Please check with your local Cat dealer for specific offering availability in your area.

For additional information, refer to the Technical Specifications brochure available at www.cat.com or your Cat dealer.

For more complete information on Cat products, dealer services and industry solutions, visit us on the web at www.cat.com.

© 2022 Caterpillar. All Rights Reserved.

Materials and specifications are subject to change without notice. Featured machines in photos may include additional equipment. See your Cat dealer for available options.

CAT, CATERPILLAR, LET'S DO THE WORK, their respective logos, Product Link, DEO-ULS, DuraLink, "Caterpillar Corporate Yellow", the "Power Edge" and Cat "Modern Hex" trade dress as well as corporate and product identity used herein, are trademarks of Caterpillar and may not be used without permission. VisionLink is a trademark of Caterpillar Inc., registered in the United States and in other countries.

www.cat.com www.caterpillar.com

AEXQ2481-05
Build Number: 20B
(Aus-NZ, Chile, Europe,
N Am, S Korea, Turkey))

