



330 GC

Hydraulic Excavator

Technical Specifications

Configurations and features may vary by region. Please consult your Cat® dealer for availability in your area.

Table of Contents

| | |
|--|-----------|
| Specifications | 2 |
| Engine | 2 |
| Swing Mechanism | 2 |
| Weights | 2 |
| Track | 2 |
| Drive | 2 |
| Hydraulic System | 2 |
| Service Refill Capacities | 2 |
| Standards | 2 |
| Sound Performance | 2 |
| Operating Weights and Ground Pressures | 3 |
| Major Component Weights | 3 |
| Dimensions | 4 |
| Working Ranges and Forces | 5 |
| Reach Boom Lift Capacities – Counterweight: 6.7 mt (14,770 lb) | 6 |
| Mass Boom Lift Capacities – Counterweight: 6.7 mt (14,770 lb) | 7 |
| Bucket Specifications and Compatibility | 8 |
| Attachments Offering Guide | 9 |
| Standard and Optional Equipment | 10 |
| Dealer Installed Kits and Attachments | 12 |
| 330 GC Environmental Declaration | 13 |



330 GC Hydraulic Excavator Specifications

Engine

| | | |
|----------------------|--------------------------|---------------------|
| Engine Model | Cat® C7.1 | |
| Net Power | | |
| ISO 9249 | 150 kW | 201 hp |
| ISO 9249 (DIN) | 204 hp (metric) | |
| Engine Power | | |
| ISO 14396 | 151 kW | 202 hp |
| ISO 14396 (DIN) | 205 hp (metric) | |
| Bore | 105 mm | 4 in |
| Stroke | 135 mm | 5 in |
| Displacement | 7.01 L | 428 in ³ |
| Biodiesel capability | Up to B20 ⁽¹⁾ | |

- Meets U.S. EPA Tier 4 Final, EU Stage V, Korea Stage V, and Japan 2014 emission standards.
- Recommended for use up to 4500 m (14,760 ft) altitude with engine power derate above 3000 m (9,840 ft).
- Advertised power is tested per the specified standard in effect at the time of manufacture.
- Net power advertised is the power available at the flywheel when the engine is equipped with fan, air intake system, exhaust system and alternator.
- Engine speed at 2,200 rpm.

⁽¹⁾Cat diesel engines are required to use ULSD (ultra-low sulfur diesel fuel with 15 ppm of sulfur or less) or ULSD blended with the following lower-carbon intensity fuels** up to:

- ✓ 20% biodiesel FAME (fatty acid methyl ester)*
- ✓ 100% renewable diesel, HVO (hydrogenated vegetable oil) and GTL (gas-to-liquid) fuels

Refer to guidelines for successful application. Please consult your Cat dealer or “Caterpillar Machine Fluids Recommendations” (SEBU6250) for details.

**Engines with no aftertreatment devices can use higher blends, up to 100% biodiesel (for use of blends higher than 20% biodiesel, consult your Cat dealer).*

***Tailpipe greenhouse gas emissions from lower-carbon intensity fuels are essentially the same as traditional fuels.*

Swing Mechanism

| | | |
|----------------------|----------|--------------|
| Swing Speed | 11.5 rpm | |
| Maximum Swing Torque | 105 kN·m | 77,370 lb·ft |

Weights

| | | |
|------------------|-----------|-----------|
| Operating Weight | 29 900 kg | 65,900 lb |
|------------------|-----------|-----------|

- Long undercarriage, Reach boom, R3.2 m (10'6") stick, Heavy Duty (HD) 1.54 m³ (2.01 yd³) bucket, 600 mm (24") triple grouser shoes and 6700 kg (14,770 lb) counterweight.

Track

| | | |
|---------------------------------------|--------|-------|
| Standard Track Shoes Width | 600 mm | 24 in |
| Number of Shoes (each side) | 50 | |
| Number of Track Rollers (each side) | 9 | |
| Number of Carrier Rollers (each side) | 2 | |

Drive

| | | |
|----------------------|----------|------------|
| Gradeability | 35°/70% | |
| Maximum Travel Speed | 5.3 km/h | 3.3 mph |
| Maximum Drawbar Pull | 248 kN | 55,753 lbf |

Hydraulic System

| | | |
|--|---------------------------|----------------------------|
| Main System – Maximum Flow – Implement | 560 L/min (280 × 2 pumps) | 148 gal/min (74 × 2 pumps) |
| Maximum Pressure – Equipment | 35 000 kPa | 5,075 psi |
| Maximum Pressure – Travel | 35 000 kPa | 5,075 psi |
| Maximum Pressure – Swing | 28 400 kPa | 4,120 psi |
| Boom Cylinder – Bore | 140 mm | 6 in |
| Boom Cylinder – Stroke | 1407 mm | 55 in |
| Stick Cylinder – Bore | 150 mm | 6 in |
| Stick Cylinder – Stroke | 1646 mm | 65 in |
| Bucket Cylinder – Bore | 135 mm | 5 in |
| Bucket Cylinder – Stroke | 1156 mm | 46 in |

Service Refill Capacities

| | | |
|-----------------------------------|-------|-----------|
| Fuel Tank Capacity | 474 L | 125.2 gal |
| Cooling System | 25 L | 6.6 gal |
| Engine Oil | 25 L | 6.6 gal |
| Swing Drive | 10 L | 2.6 gal |
| Final Drive (each) | 5.5 L | 1.5 gal |
| Hydraulic System (including tank) | 310 L | 81.9 gal |
| Hydraulic Tank | 147 L | 38.8 gal |
| Diesel Exhaust Fluid (DEF) Tank | 41 L | 10.8 gal |

Standards

| | |
|---|-------------------------|
| Brakes | ISO 10265:2008 |
| Cab/Rollover Protective Structure (ROPS) | ISO 12117-2:2008 |
| Operator Protective Guards (OPG) (optional) | ISO 10262:1998 Level II |

Sound Performance

| | |
|----------------------------|-----------|
| ISO 6395:2008 (external) | 103 dB(A) |
| ISO 6396:2008 (inside cab) | 70 dB(A) |

- Hearing protection may be needed when operating with an open operator station and cab (when not properly maintained or doors/windows open) for extended periods or in a noisy environment.

330 GC Hydraulic Excavator Specifications

Operating Weights and Ground Pressures

| Base Machine Configurations | 600 mm (24") Triple Grouser Shoes | |
|--|--------------------------------------|--------------------|
| | Weight | Ground Pressure |
| Base Frame with Track Rollers and Carrier Rollers | | |
| 6700 kg (14,770 lb) Counterweight and Long Undercarriage Base Machine | | |
| Reach Boom + R3.2CB2 (10'6") Stick + 1.54 m ³ (2.01 yd ³) HD Bucket | 29 900 kg (65,900 lb) | 56.9 kPa (8.3 psi) |
| Reach Boom + R2.65CB2 (8'8") Stick + 1.54 m ³ (2.01 yd ³) HD Bucket | 29 800 kg (65,700 lb) | 53.7 kPa (8.2 psi) |

All operating weights include a 90% fuel tank with 75 kg (165 lb) operator.

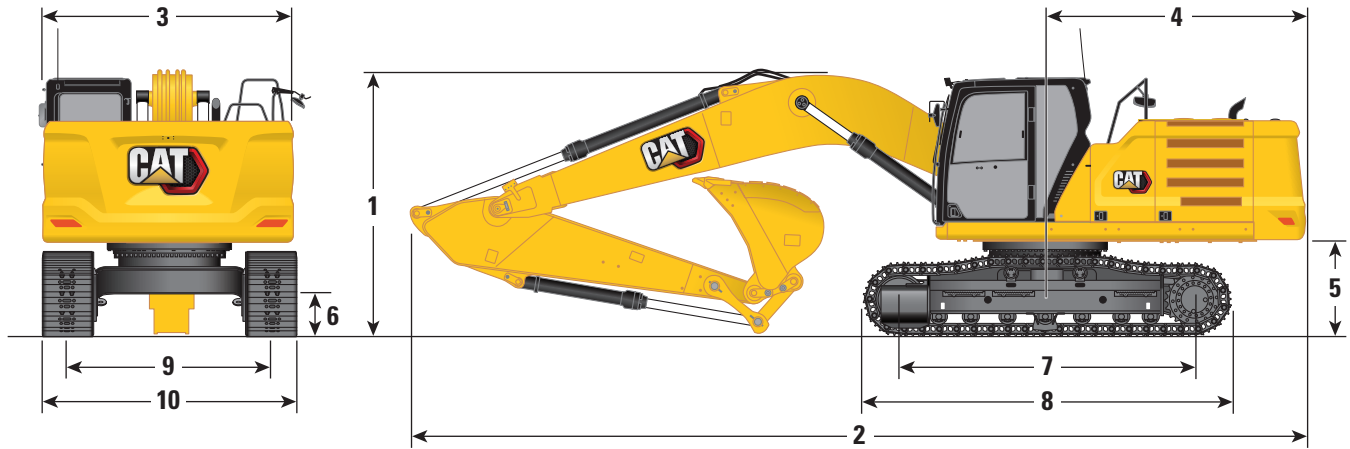
Major Component Weights

| | kg | lb |
|---|--------|--------|
| Base machine (with 6700 kg [14,770 lb] counterweight, upper frame, long undercarriage with HD rollers and two boom cylinders) – weight of 90% fuel tank and 75 kg (165 lb) operator not included. | 20 880 | 46,000 |
| Track Shoes: | | |
| 600 mm (24") Width, 11 mm (0.43") Thick, Triple Grouser Track Shoes | 3620 | 8,000 |
| Two Boom Cylinders | 490 | 1,100 |
| Weight of 90% Fuel Tank and 75 kg (165 lb) Operator | 460 | 1,000 |
| Counterweight: | | |
| 6700 kg (14,770 lb) Counterweight | 6700 | 14,800 |
| Booms (including lines, pins, stick cylinder): | | |
| Reach Boom 6.15 m (20'2") | 2300 | 5,100 |
| Mass Boom 5.55 m (18'2") | 2380 | 5,200 |
| Sticks (including lines, pins, bucket cylinder, bucket linkage): | | |
| Reach Stick R3.2CB2 (10'6") | 1440 | 3,200 |
| Reach Stick R2.65CB2 (8'8") | 1350 | 3,000 |
| Mass Stick M2.5DB (8'2") with Rebar | 1700 | 3,700 |
| Buckets (without linkage, with tips and side cutters): | | |
| 1.54 m ³ (2.01 yd ³) HD, CB Linkage | 1200 | 2,600 |
| 2.12 m ³ (2.77 yd ³) HD, DB Linkage | 1690 | 3,700 |
| 2.15 m ³ (2.81 yd ³) Severe Duty (SD), DB Linkage | 1910 | 4,200 |
| Quick Couplers (QC): | | |
| Pin Grabber QC CB with pins | 530 | 1,200 |
| Pin Grabber QC CB without pins | 500 | 1,100 |
| Dedicated QC | 430 | 900 |

330 GC Hydraulic Excavator Specifications

Dimensions

All dimensions are approximate and may vary depending on bucket selection.

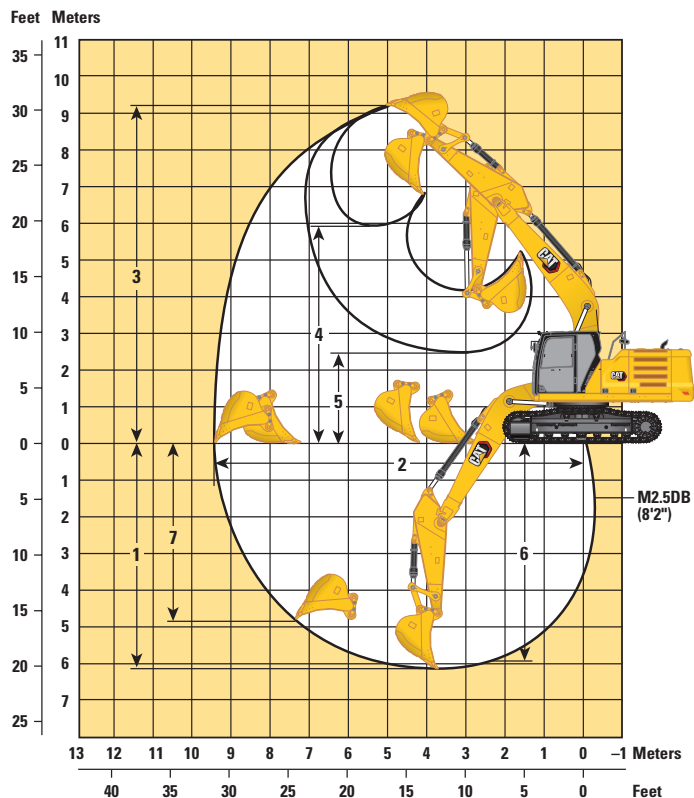
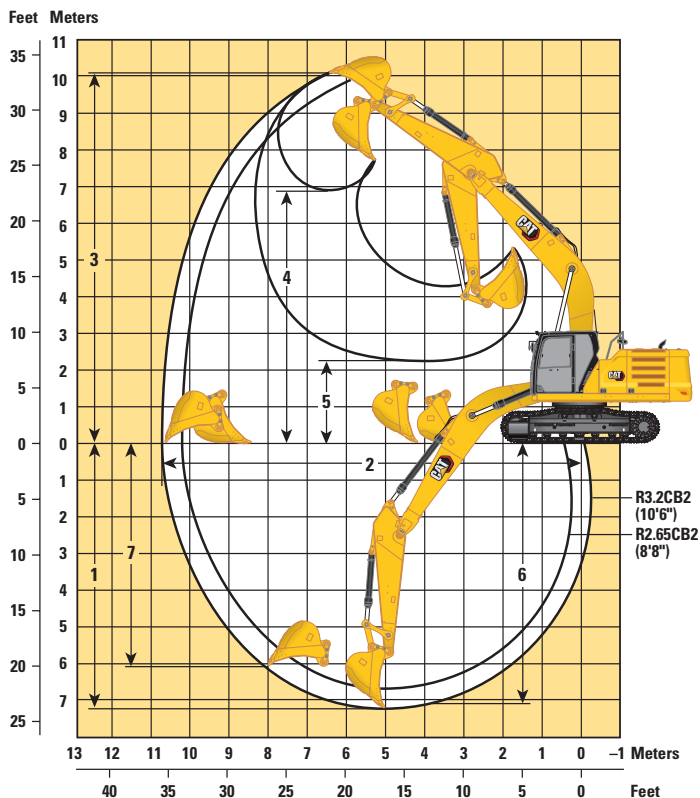


| Boom Options | Reach Boom 6.15 m (20'2") | | | | Mass Boom 5.55 m (18'2") | |
|--------------------------------------|--------------------------------|----------------------|--------------------------------|----------------------|-----------------------------|----------------------|
| | Reach Stick R3.2CB2 (10'6") | | Reach Stick R2.65CB2 (8'8") | | Mass Stick M2.5DB (8'2") | |
| 1 Machine Height: | | | | | | |
| Cab Height | 3050 mm | 10'0" | 3050 mm | 10'0" | 3050 mm | 10'0" |
| OPG Height | 3190 mm | 10'6" | 3190 mm | 10'6" | 3190 mm | 10'6" |
| Handrail Height | 3050 mm | 10'0" | 3050 mm | 10'0" | 3050 mm | 10'0" |
| With Boom/Stick/Bucket Installed | 3400 mm | 11'2" | 3450 mm | 11'4" | 3520 mm | 11'7" |
| With Boom/Stick Installed | 3380 mm | 11'1" | 3380 mm | 11'1" | 3430 mm | 11'3" |
| With Boom Installed | 3050 mm | 10'0" | 3050 mm | 10'0" | 3050 mm | 10'0" |
| 2 Machine Length: | | | | | | |
| With Boom/Stick/Bucket Installed | 10 420 mm | 34'2" | 10 420 mm | 34'2" | 9870 mm | 32'5" |
| With Boom/Stick Installed | 10 420 mm | 34'2" | 10 420 mm | 34'2" | 9850 mm | 32'4" |
| With Boom Installed | 9230 mm | 30'3" | 9230 mm | 30'3" | 8600 mm | 28'3" |
| 3 Upperframe Width | 2940 mm | 9'8" | 2940 mm | 9'8" | 2940 mm | 9'8" |
| 4 Tail Swing Radius | 3130 mm | 10'3" | 3130 mm | 10'3" | 3130 mm | 10'3" |
| 5 Counterweight Clearance | 1110 mm | 3'8" | 1110 mm | 3'8" | 1110 mm | 3'8" |
| 6 Ground Clearance | 490 mm | 1'7" | 490 mm | 1'7" | 490 mm | 1'7" |
| 7 Length to Center of Rollers | 3990 mm | 13'1" | 3990 mm | 13'1" | 3990 mm | 13'1" |
| 8 Track Length | 4860 mm | 15'11" | 4860 mm | 15'11" | 4860 mm | 15'11" |
| 9 Track Gauge | 2590 mm | 8'6" | 2590 mm | 8'6" | 2590 mm | 8'6" |
| 10 Undercarriage Width: | | | | | | |
| 600 mm (24") Shoes | 3190 mm | 10'6" | 3190 mm | 10'6" | 3190 mm | 10'6" |
| Bucket Type | HD | | HD | | SD | |
| Bucket Capacity | 1.54 m ³ | 2.01 yd ³ | 1.54 m ³ | 2.01 yd ³ | 2.15 m ³ | 2.81 yd ³ |
| Bucket Tip Radius | 1662 mm | 5'5" | 1662 mm | 5'5" | 1794 mm | 5'11" |

330 GC Hydraulic Excavator Specifications

Working Ranges and Forces

All dimensions are approximate and may vary depending on bucket selection.



Boom Options

Reach Boom 6.15 m (20'2")

Mass Boom 5.55 m (18'2")

Stick Options

Reach Stick R3.2CB2 (10'6")

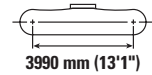
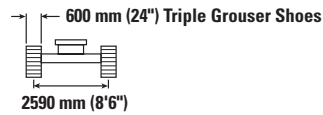
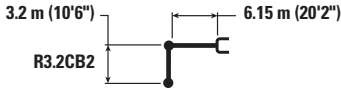
Reach Stick R2.65CB2 (8'8")

Mass Stick M2.5DB (8'2")

| | | | | | | |
|---|---------------------|----------------------|---------------------|----------------------|---------------------|----------------------|
| 1 Maximum Digging Depth | 7260 mm | 23'10" | 6710 mm | 22'0" | 6150 mm | 20'2" |
| 2 Maximum Reach at Ground Line | 10 690 mm | 35'1" | 10 210 mm | 33'6" | 9480 mm | 31'1" |
| 3 Maximum Cutting Height | 10 020 mm | 32'10" | 9910 mm | 32'6" | 9250 mm | 30'4" |
| 4 Maximum Loading Height | 6930 mm | 22'9" | 6790 mm | 22'3" | 5950 mm | 19'6" |
| 5 Minimum Loading Height | 2280 mm | 7'6" | 2830 mm | 9'3" | 2420 mm | 7'11" |
| 6 Maximum Depth Cut for 2440 mm (8 ft) Level Bottom | 7100 mm | 23'4" | 6530 mm | 21'5" | 5960 mm | 19'7" |
| 7 Maximum Vertical Wall Digging Depth | 6030 mm | 19'9" | 5720 mm | 18'9" | 4860 mm | 15'11" |
| Bucket Digging Force (ISO) | 179 kN | 40,240 lbf | 179 kN | 40,240 lbf | 211 kN | 47,430 lbf |
| Stick Digging Force (ISO) | 126 kN | 28,330 lbf | 145 kN | 32,600 lbf | 153 kN | 34,400 lbf |
| Bucket Type | HD | | HD | | SD | |
| Bucket Capacity | 1.54 m ³ | 2.01 yd ³ | 1.54 m ³ | 2.01 yd ³ | 2.15 m ³ | 2.81 yd ³ |
| Bucket Tip Radius | 1662 mm | 5'5" | 1662 mm | 5'5" | 1794 mm | 5'11" |

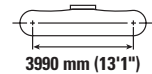
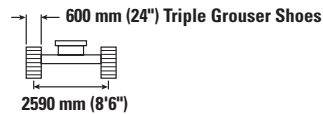
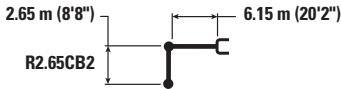
330 GC Hydraulic Excavator Specifications

Reach Boom Lift Capacities – Counterweight: 6700 kg (14,770 lb) – without Bucket



| | | 1500 mm/60 in | | 3000 mm/120 in | | 4500 mm/180 in | | 6000 mm/240 in | | 7500 mm/300 in | | 9000 mm/360 in | | mm in | | |
|---------------------|----------|--------------------|--------------------|--------------------|--------------------|--------------------|------------------|--------------------|------------------|------------------|----------------|------------------|---------------|------------------|------------------|-------------|
| | | | | | | | | | | | | | | | | |
| 7500 mm 300 in | kg lb | | | | | | | | | | | | | *5150 *11,350 | *5150 *11,350 | 7270 290 |
| 6000 mm 240 in | kg lb | | | | | | | | | *7200 *15,300 | 6250 13,450 | | | *4900 *10,750 | *4900 *10,750 | 8230 330 |
| 4500 mm 180 in | kg lb | | | | | | | *8400 *18,250 | *8400 *18,250 | *7600 *16,600 | 6150 13,200 | | | *4850 *10,650 | 4750 10,550 | 8830 350 |
| 3000 mm 120 in | kg lb | | | | | *12 950 *27,850 | 12 550 27,000 | *9800 *21,250 | 8250 17,750 | *8300 *18,050 | 5950 12,850 | *5950 4550 | | *5000 *10,950 | 4450 9,800 | 9140 360 |
| 1500 mm 60 in | kg lb | | | | | *15 450 *33,350 | 11 850 25,500 | *11 150 *24,150 | 7900 17,000 | 8950 19,200 | 5800 12,450 | *6800 *12,550 | 4450 9,600 | *5300 *11,650 | 4350 9,550 | 9190 370 |
| 0 mm 0 in | kg lb | | | | | *16 600 *35,950 | 11 500 24,700 | *12 050 *26,050 | 7650 16,500 | 8800 18,900 | 5650 12,150 | | | *5850 *12,800 | 4400 9,700 | 8990 360 |
| -1500 mm -60 in | kg lb | *6350 *14,200 | *6350 *14,200 | *10 000 *22,700 | *10 000 *22,700 | *16 600 *35,950 | 11 400 24,500 | 12 150 26,050 | 7550 16,250 | 8700 18,750 | 5600 12,000 | | | *6750 *14,850 | 4750 10,400 | 8530 340 |
| -3000 mm -120 in | kg lb | *11 450 *25,650 | *11 450 *25,650 | *16 150 *36,750 | *16 150 *36,750 | *15 600 *33,700 | 11 450 24,650 | *11 700 *25,300 | 7550 16,300 | 8750 18,850 | 5600 12,150 | | | 8400 18,550 | 5400 11,950 | 7740 310 |
| -4500 mm -180 in | kg lb | | | *18 050 *38,850 | *18 050 *38,850 | *13 250 *28,450 | 11 700 25,150 | *9800 *20,750 | 7750 16,700 | | | | | *8600 *18,900 | 6950 15,550 | 6520 260 |

Reach Boom Lift Capacities – Counterweight: 6700 kg (14,770 lb) – without Bucket



| | | 3000 mm/120 in | | 4500 mm/180 in | | 6000 mm/240 in | | 7500 mm/300 in | | mm in | | |
|---------------------|----------|--------------------|--------------------|--------------------|--------------------|--------------------|------------------|------------------|----------------|------------------|------------------|-------------|
| | | | | | | | | | | | | |
| 7500 mm 300 in | kg lb | | | | | *17,450 | *17,450 | | | *6700 *14,900 | *6700 *14,900 | 6670 260 |
| 6000 mm 240 in | kg lb | | | | | *8150 *17,750 | *8150 *17,750 | *7650 *14,350 | 6200 13,250 | *6300 *13,950 | 5950 13,200 | 7700 300 |
| 4500 mm 180 in | kg lb | | | *11 200 *24,000 | *11 200 *24,000 | *9100 *19,750 | 8500 18,350 | *8150 *17,800 | 6100 13,150 | *6250 *13,750 | 5200 11,450 | 8340 330 |
| 3000 mm 120 in | kg lb | | | *14 100 *30,300 | 12 300 26,550 | *10 450 *22,600 | 8150 17,600 | *8750 *19,050 | 5950 12,800 | *6400 *14,050 | 4800 10,600 | 8660 340 |
| 1500 mm 60 in | kg lb | | | *15 600 *35,000 | 11 750 25,250 | *11 650 *25,150 | 7850 16,950 | 8950 19,200 | 5800 12,450 | *6800 *14,900 | 4700 10,350 | 8720 350 |
| 0 mm 0 in | kg lb | | | *16 550 *36,450 | 11 500 24,750 | 12 250 26,400 | 7650 16,550 | 8800 18,950 | 5700 12,250 | 7350 16,200 | 4800 10,600 | 8510 340 |
| -1500 mm -60 in | kg lb | *9750 *22,250 | *9750 *22,250 | *16 350 *35,500 | 11 500 24,700 | 12 200 26,200 | 7600 16,400 | 8800 18,900 | 5650 12,200 | 8000 17,650 | 5200 11,450 | 8020 320 |
| -3000 mm -120 in | kg lb | *18 300 *41,700 | *18 300 *41,700 | *14 950 *32,300 | 11 600 24,950 | *11 350 *24,400 | 7650 16,550 | | | *8900 *19,600 | 6100 13,500 | 7180 290 |
| -4500 mm -180 in | kg lb | *15 700 | *15 700 | *11 900 *25,400 | 11 900 *25,400 | | | | | *8650 *19,000 | 8250 18,550 | 5830 230 |



ISO 10567:2007



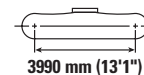
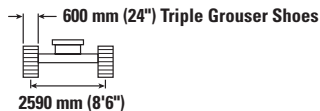
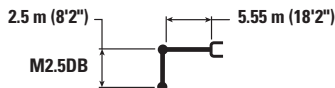
* Indicates that the load is limited by hydraulic lifting capacity rather than tipping load. The above loads are in compliance with hydraulic excavator lift capacity standard ISO 10567:2007. They do not exceed 87% of hydraulic lifting capacity or 75% of tipping load. Weight of all lifting accessories must be deducted from the above lifting capacities. Lifting capacities are based on the machine standing on a firm, uniform supporting surface. The use of a work tool attachment point to handle/lift objects, could affect the machine lift performance.

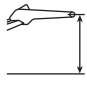


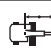

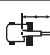

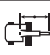

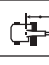

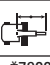
Lift capacity stays with ±5% for all available track shoes.

Always refer to the appropriate Operation and Maintenance Manual for specific product information.

330 GC Hydraulic Excavator Specifications

Mass Boom Lift Capacities – Counterweight: 6700 kg (14,770 lb) – without Bucket



|  | 3000 mm/120 in | | 4500 mm/180 in | | 6000 mm/240 in | | 7500 mm/300 in | |  | | mm in | |
|---|---|---|---|---|---|---|--|---|---|---|------------------|-------------|
| |  |  |  |  |  |  |  |  |  |  | | |
| 7500 mm 300 in | kg lb | | | | | | | | | *7900 *17,550 | *7900 *17,550 | 5500 220 |
| 6000 mm 240 in | kg lb | | | | *8750 *19,250 | 8650 18,550 | | | | *7350 *16,200 | 7200 16,050 | 6720 270 |
| 4500 mm 180 in | kg lb | | | *11 150 *24,000 | *11 150 *24,000 | *9450 *20,500 | 8400 18,100 | | | *7300 *16,050 | 6000 13,350 | 7440 300 |
| 3000 mm 120 in | kg lb | | | *13 800 *29,700 | 12 400 26,700 | *10 550 *22,900 | 8100 17,450 | 9000 19,300 | 5800 12,500 | *7600 *16,650 | 5500 12,100 | 7810 310 |
| 1500 mm 60 in | kg lb | | | *15 950 *34,400 | 11 750 25,300 | *11 650 *25,250 | 7800 16,750 | 8850 19,000 | 5700 12,250 | 8250 *18,100 | 5300 11,700 | 7870 310 |
| 0 mm 0 in | kg lb | | | *16 700 *36,150 | 11 450 24,650 | 12 200 26,250 | 7600 16,350 | 8750 18,800 | 5600 12,050 | 8500 18,750 | 5450 12,000 | 7640 300 |
| -1500 mm -60 in | kg lb | *16 300 *37,150 | *16 300 *37,150 | *16 100 *34,900 | 11 400 24,550 | *11 950 *25,850 | 7550 16,250 | | | 9500 21,000 | 6050 13,350 | 7080 280 |
| -3000 mm -120 in | kg lb | *19 200 *41,500 | *19 200 *41,500 | *14 100 *30,350 | 11 550 24,900 | *10 150 | 7650 | | | *9850 *21,700 | 7500 16,700 | 6110 240 |



ISO 10567:2007



* Indicates that the load is limited by hydraulic lifting capacity rather than tipping load. The above loads are in compliance with hydraulic excavator lift capacity standard ISO 10567:2007. They do not exceed 87% of hydraulic lifting capacity or 75% of tipping load. Weight of all lifting accessories must be deducted from the above lifting capacities. Lifting capacities are based on the machine standing on a firm, uniform supporting surface. The use of a work tool attachment point to handle/lift objects, could affect the machine lift performance.

Lift capacity stays with ±5% for all available track shoes.

Always refer to the appropriate Operation and Maintenance Manual for specific product information.

330 GC Hydraulic Excavator Specifications

Bucket Specifications and Compatibility

| | Linkage | Width | | Capacity | | Weight | | Fill % | Reach Boom | | Mass Boom |
|--|---------|-------|----|----------------|-----------------|--------|-------|--------|--------------|--------------|-----------|
| | | mm | in | m ³ | yd ³ | kg | lb | | R3.2 (10'6") | R2.65 (8'8") | |
| Pin-On (No Quick Coupler) | | | | | | | | | | | |
| Heavy Duty | CB | 1450 | 57 | 1.60 | 2.09 | 1274 | 2,809 | 100 | ● | ● | |
| | CB | 1650 | 66 | 1.90 | 2.49 | 1369 | 3,019 | 100 | X | X | |
| | CB | 1750 | 69 | 2.00 | 2.62 | 1397 | 3,081 | 100 | X | X | |
| Heavy Duty | CB | 1250 | 49 | 1.33 | 1.74 | 1158 | 2,554 | 100 | ● | ● | |
| | CB | 1400 | 55 | 1.54 | 2.02 | 1263 | 2,784 | 100 | ● | ● | |
| | CB | 1500 | 60 | 1.76 | 2.30 | 1391 | 3,067 | 100 | ⊙ | ● | |
| Heavy Duty | DB | 1500 | 61 | 1.88 | 2.46 | 1633 | 3,601 | 100 | | | ● |
| | DB | 1650 | 67 | 2.12 | 2.77 | 1731 | 3,817 | 100 | | | ⊙ |
| Extreme Duty | DB | 1400 | 56 | 1.64 | 2.14 | 1892 | 4,171 | 90 | | | ● |
| Maximum load with pin-on (payload + bucket) | | | | | | | | kg | 4580 | 5015 | 5785 |
| | | | | | | | | lb | 10,097 | 11,056 | 12,754 |
| With Pin Grabber Quick Coupler | | | | | | | | | | | |
| Heavy Duty | CB | 1450 | 57 | 1.60 | 2.09 | 1274 | 2,809 | 100 | ⊙ | ● | |
| | CB | 1650 | 66 | 1.90 | 2.49 | 1369 | 3,019 | 100 | ○ | ⊖ | |
| | CB | 1750 | 69 | 2.00 | 2.62 | 1397 | 3,081 | 100 | ○ | ⊖ | |
| Heavy Duty | CB | 1250 | 49 | 1.33 | 1.74 | 1158 | 2,554 | 100 | ● | ● | |
| | CB | 1400 | 55 | 1.54 | 2.02 | 1263 | 2,784 | 100 | ⊙ | ● | |
| | CB | 1500 | 60 | 1.76 | 2.30 | 1391 | 3,067 | 100 | ⊖ | ⊙ | |
| Heavy Duty | DB | 1500 | 61 | 1.88 | 2.46 | 1633 | 3,601 | 100 | | | ⊙ |
| | DB | 1650 | 67 | 2.12 | 2.77 | 1731 | 3,817 | 100 | | | ⊖ |
| Extreme Duty | DB | 1400 | 56 | 1.64 | 2.14 | 1892 | 4,171 | 90 | | | ● |
| Maximum load with coupler (payload + bucket) | | | | | | | | kg | 4054 | 4489 | 5259 |
| | | | | | | | | lb | 8,937 | 9,896 | 11,594 |

The above loads are in compliance with hydraulic excavator standard EN474-5:2006 + A3:2013, they do not exceed 87% of hydraulic lifting capacity or 75% of tipping capacity with front linkage fully extended at ground line with bucket curled.

Capacity based on ISO 7451:2007.

Bucket weight with General Duty tips.

Maximum Material Density:

- 2100 kg/m³ (3,500 lb/yd³)
- ⊙ 1800 kg/m³ (3,000 lb/yd³)
- ⊖ 1500 kg/m³ (2,500 lb/yd³)
- 1200 kg/m³ (2,000 lb/yd³)
- X Not Recommended

Caterpillar recommends using appropriate work tools to maximize the value customers receive from our products. Use of work tools, including buckets, which are outside of Caterpillar's recommendations or specifications for weight, dimensions, flows, pressures, etc. may result in less-than-optimal performance, including but not limited to reductions in production, stability, reliability, and component durability. Improper use of a work tool resulting in sweeping, prying, twisting and/or catching of heavy loads will reduce the life of the boom and stick.

330 GC Hydraulic Excavator Specifications

Attachments Offering Guide

Not all Attachments are available in all regions. Consult your Cat dealer for configurations available in your region.

Match

No Match

PIN-ON ATTACHMENTS

| Boom Types | Stick Lengths | Reach | | Mass |
|-------------------|----------------|--------------|--------------|-------------|
| | | R3.2 (10'6") | R2.65 (8'8") | R2.5 (8'2") |
| Hydraulic Hammers | H130 GC | ✓ | ✓ | ✓ |
| | H130 GC S | ✓ | ✓ | ✓ |
| | H140 GC | ✓ | ✓ | ✓ |
| | H140 GC S | ✓ | ✓ | ✓ |
| | H160 GC | ✓ | ✓ | ✓ |
| | H160 GC S | ✓ | ✓ | ✓ |
| | Rotary Cutters | RC20 | ✓ | ✓ |
| | RC30 | ✓ | ✓ | |

330 GC Standard and Optional Equipment

Standard and Optional Equipment

Standard and optional equipment may vary. Consult your Cat dealer for details.

| | Standard | Optional | | Standard | Optional |
|---|----------|----------|---|----------|----------|
| CAB | | | ENGINE | | |
| ROPS | ✓ | | Cat® C7.1 single turbo diesel engine | ✓ | |
| High-resolution 203 mm (8") LCD touchscreen monitor | ✓ | | Two selectable modes: Power, Smart | ✓ | |
| Auto bi-level air conditioner | ✓ | | Automatic engine speed control | ✓ | |
| Jog dial and shortcut keys for monitor control | ✓ | | Auto engine idle-shutdown | ✓ | |
| Keyless push-to-start engine control | ✓ | | 4500 m (14,760 ft) altitude capability with engine power derate above 3000 m (9,840 ft) | ✓ | |
| Height-adjustable console | ✓ | | 52° C (125° F) high-ambient cooling capability without derate | ✓ | |
| Fixed left-side console | ✓ | | -18° C (0° F) cold start capability | ✓ | |
| Mechanical-suspension seat | ✓ | | -32° C (-25° F) cold start capability | | ✓ |
| 51 mm (2") seat belt | ✓ | | Cold start block heaters | | ✓ |
| Bluetooth® integrated radio with USB/Aux ports | ✓ | | 2 × 115 amp dual alternator | ✓ | |
| 12V DC outlets | ✓ | | Sealed double element air filter with integrated pre-cleaner | ✓ | |
| Document storage | ✓ | | Two-stage fuel filtration with water separator and indicator | ✓ | |
| Cup and bottle holders | ✓ | | Electric fuel priming pump | ✓ | |
| Openable two-piece front window | ✓ | | Electric cooling fans with auto-reverse function | ✓ | |
| Rear window emergency exit | ✓ | | HYDRAULIC SYSTEM | | |
| Upper radial wiper with washer | ✓ | | Electronic main control valve | ✓ | |
| Openable steel hatch | ✓ | | Electric boom regeneration circuit | ✓ | |
| LED dome light | ✓ | | Stick regeneration circuit | ✓ | |
| Roller front sunscreen | ✓ | | Automatic warm up | ✓ | |
| Roller rear sunscreen | | ✓ | Automatic two-speed travel | ✓ | |
| Washable floor mat | ✓ | | Boom and stick drift reduction valve | ✓ | |
| Beacon ready | ✓ | | High performance hydraulic return filter | ✓ | |
| CAT TECHNOLOGY | | | Final drive with bio hydraulic oil capable travel motor | ✓ | |
| VisionLink® | ✓* | | Fine swing control | | ✓ |
| VisionLink Productivity | | ✓ | Hammer return filter | ✓ | |
| Remote Flash | ✓ | | Tool Control (two pump, one/two way high-pressure flow) | ✓ | |
| | | | Medium-pressure circuit | | ✓ |
| | | | Common Quick Coupler Circuit for Cat Pin Grabber and CW Dedicated | | ✓ |

*Connect subscription only. Additional subscriptions are available. Contact your Cat dealer for availability.

(continued on next page)

Standard and Optional Equipment *(continued)*

Standard and optional equipment may vary. Consult your Cat dealer for details.

| | Standard | Optional | | Standard | Optional |
|--|----------|----------|---|----------|----------|
| BOOMS, STICKS AND LINKAGES | | | SERVICE AND MAINTENANCE | | |
| 6.15 m (20'2") Reach boom | | ✓ | Grouped location of engine oil and fuel filters | ✓ | |
| 5.55 m (18'2") Mass boom | | ✓ | Ground-level second dipstick for engine oil | ✓ | |
| 3.2 m (10'6") Reach stick | | ✓ | Side entry to service platform | ✓ | |
| 2.65 m (8'8") Reach stick | | ✓ | Scheduled Oil Sampling (S·O·S SM) ports | ✓ | |
| 2.5 m (8'2") Mass stick with rebar | | ✓ | Preventative maintenance ready (QuickEvac TM) | | ✓ |
| Bucket linkage, CB family with lifting eye | | ✓ | Electric refueling pump with automatic shutoff | | ✓ |
| Bucket linkage, DB family with lifting eye | | ✓ | Radiator screen | | ✓ |
| UNDERCARRIAGE AND STRUCTURES | | | SAFETY AND SECURITY | | |
| Segmented track guiding guard | ✓ | | Auto hammer stop | ✓ | |
| Bottom guard | | ✓ | Rearview camera | ✓ | |
| HD bottom guards | | ✓ | Right-hand-side view camera | ✓ | |
| Swivel guard | | ✓ | Cat PL161 Attachment Locator | | ✓ |
| Travel motor guards | ✓ | | Secure start with PIN code | ✓ | |
| Grease lubricated track | ✓ | | Caterpillar One Key security system | ✓ | |
| Base frame with HD rollers | ✓ | | Lockable external tool/storage box | ✓ | |
| Tie-down points on base frame | ✓ | | Lockable door, fuel, and hydraulic tank locks | ✓ | |
| 6700 kg (14,770 lb) counterweight | ✓ | | Lockable fuel drain compartment | ✓ | |
| 600 mm (24") triple grouser track shoes | ✓ | | Service platform with anti-skid plate and recessed bolts | ✓ | |
| ELECTRICAL SYSTEM | | | Right Hand (RH) handrail and hand hold | ✓ | |
| Maintenance-free 1,000 CCA batteries (×2) | ✓ | | Cab mirror for RH track edge | ✓ | |
| Programmable time-delay LED working lights | ✓ | | Signaling/warning horn | ✓ | |
| Centralized electrical disconnect switch | ✓ | | Swing alarm | | ✓ |
| LED chassis light, left-side boom light | ✓ | | Ground-level secondary engine shutoff switch in cab | ✓ | |
| LED cab lights, right-side boom light | | ✓ | Lockable disconnect switch | ✓ | |
| | | | Hydraulic lock out lever that neutralizes all controls | ✓ | |
| | | | Travel alarm | | ✓ |
| | | | Inspection lighting | | ✓ |

Dealer Installed Kits and Attachments

Attachments may vary. Consult your Cat dealer for details.

CAB

- RH electrical pedal (two-way) for tool control
- Radial lower wiper for two piece (70/30) windshield, with washer
- Rain protector plus cab light cover
- Polycarbonate roof hatch
- P5A laminated glass front windshield and roof hatch (for EU demolition regulation)

SAFETY AND SECURITY

- 76 mm (3") retractable seat belt
- Bluetooth receiver

GUARDS

- Side rubber bumper guard
- Operator Protective Guards (not compatible with cab light cover, rain protector)
- Mesh guard full front (not compatible with cab light cover, rain protector)
- Full protecting vandalism guard (not compatible with cab light cover, rain protector)
- Vandalism guard

ELECTRICAL

- Jump start wiring

SERVICE AND MAINTENANCE

- Grease gun holder

The following information applies to the machine at the time of final manufacture as configured for sale in the regions covered in this document. The content of this declaration is valid as of the date issued; however, content related to machine features and specifications are subject to change without notice. For additional information, please see the machine's Operation and Maintenance Manual.

For more information on sustainability in action and our progress, please visit <https://www.caterpillar.com/en/company/sustainability>.

Engine

- The Cat® C7.1 engine meets U.S. EPA Tier 4 Final, EU Stage V, Korea Stage V, and Japan 2014 emission standards.
- Cat diesel engines are required to use ULSD (ultra-low sulfur diesel fuel with 15 ppm of sulfur or less) or ULSD blended with the following lower-carbon intensity fuels** up to:
 - ✓ 20% biodiesel FAME (fatty acid methyl ester)*
 - ✓ 100% renewable diesel, HVO (hydrogenated vegetable oil) and GTL (gas-to-liquid) fuels

Refer to guidelines for successful application. Please consult your Cat dealer or "Caterpillar Machine Fluids Recommendations" (SEBU6250) for details.

**Engines with no aftertreatment devices can use higher blends, up to 100% biodiesel (for use of blends higher than 20% biodiesel, consult your Cat dealer).*

***Tailpipe greenhouse gas emissions from lower-carbon intensity fuels are essentially the same as traditional fuels.*

Air Conditioning System

- The air conditioning system on this machine contains the fluorinated greenhouse gas refrigerant R134a (Global Warming Potential = 1430). The system contains 0.85 kg (1.9 lb) of refrigerant which has a CO₂ equivalent of 1.216 metric tonnes (1.340 tons).

Paint

- Based on best available knowledge, the maximum allowable concentration, measured in parts per million (PPM), of the following heavy metals in paint are:
 - Barium < 0.01%
 - Cadmium < 0.01%
 - Chromium < 0.01%
 - Lead < 0.01%

Sound Performance

ISO 6395:2008 (external) – 103 dB(A)

ISO 6396:2008 (inside cab) – 70 dB(A)

- Hearing protection may be needed when operating with an open operator station and cab (when not properly maintained or doors/windows open) for extended periods or in a noisy environment.

Oils and Fluids

- Caterpillar factory fills with ethylene glycol coolants. Cat Diesel Engine Antifreeze/Coolant (DEAC) and Cat Extended Life Coolant (ELC) can be recycled. Consult your Cat dealer for more information.
- Cat Bio HYDO™ Advanced is an EU Ecolabel approved biodegradable hydraulic oil.
- Additional fluids are likely to be present, please consult the Operations and Maintenance Manual or the Application and Installation guide for complete fluid recommendations and maintenance intervals.

Features and Technology

- The following features and technology may contribute to fuel savings and/or carbon reduction. Features may vary. Consult your Cat dealer for details.
 - Advanced hydraulic systems balance power and efficiency
 - Smart mode matches machine power to digging requirements automatically
 - Cut maintenance costs up to 25% with extended service intervals
 - Programmable high-efficiency cooling fans run only when needed
 - The latest hydraulic oil filter provides longer life with a 3,000-hour replacement interval

Recycling

- The materials included in machines are categorized as below with approximate weight percentage. Because of variations of product configurations, the following values in the table may vary.

| Material Type | Weight Percentage |
|--------------------------|-------------------|
| Steel | 86.85% |
| Iron | 4.63% |
| Nonferrous Metal | 1.55% |
| Mixed Metal | 0.07% |
| Mixed-Metal and Nonmetal | 0.63% |
| Plastic | 1.79% |
| Rubber | 0.16% |
| Mixed Nonmetallic | 0.23% |
| Fluid | 3.12% |
| Other | 0.96% |
| Uncategorized | 0.00% |
| Total | 100% |

- A machine with higher recyclability rate will ensure more efficient usage of valuable natural resources and enhance End-of-Life value of the product. According to ISO 16714:2008 (Earthmoving machinery – Recyclability and recoverability – Terminology and calculation method), recyclability rate is defined as percentage by mass (mass fraction in percent) of the new machine potentially able to be recycled, reused or both.

All parts in the bill of material are first evaluated by component type based on a list of components defined by the ISO 16714:2008 and Japan CEMA (Construction Equipment Manufacturers Association) standards. Remaining parts are further evaluated for recyclability based on material type.

Because of variations of product configurations, the following value in the table may vary.

Recyclability – 97%

For more complete information on Cat products, dealer services, and industry solutions, visit us on the web at www.cat.com

© 2023 Caterpillar
All rights reserved

Materials and specifications are subject to change without notice. Featured machines in photos may include additional equipment. See your Cat dealer for available options.

CAT, CATERPILLAR, LET'S DO THE WORK, their respective logos, "Caterpillar Corporate Yellow," the "Power Edge" and Cat "Modern Hex" trade dress as well as corporate and product identity used herein, are trademarks of Caterpillar and may not be used without permission.

AEXJ0084-05 (09-2023)
Replaces AEXJ0084-04
Build Number: 07F
(Korea)

