



336 GC

Hydraulic Excavator

Technical Specifications

Configurations and features may vary by region. Please consult your Cat® dealer for availability in your area.

Table of Contents

Specifications	2
Engine	2
Swing Mechanism	2
Weights	2
Track	2
Drive	2
Hydraulic System	2
Service Refill Capacities	2
Standards	2
Sound Performance	2
Air Conditioning System	2
Operating Weights and Ground Pressures	3
Major Component Weights	4
Dimensions	5
Working Ranges and Forces	7
Reach Boom Lift Capacities	
Long Undercarriage	8
Long Narrow Undercarriage	11
Bucket Specifications and Compatibility	13
Attachments Offering Guide	15
Standard and Optional Equipment	21
Dealer Installed Kits and Attachments	23

336 GC Hydraulic Excavator Specifications

Engine

Engine Model	Cat® C7.1	
Net Power – ISO 9249	204 kW	273 hp
Engine Power – ISO 14396	205 kW	275 hp
Bore	105 mm	4 in
Stroke	135 mm	5 in
Displacement	7.1 L	433 in ³

- Meets EU Stage V emission standards.
- Recommended for use up to 3300 m (10,830 ft) altitude with engine power derate above 2300 m (7,550 ft).
- Net power is tested per ISO 9249. Standards in effect at the time of manufacture.
- Net power advertised is the power available at the flywheel when the engine is equipped with fan, air intake system, exhaust system and alternator.
- Rated speed at 2,200 rpm.

Swing Mechanism

Swing Speed	8.74 rpm	
Maximum Swing Torque	137 kN·m	101,168 lbf·ft

Weights

Operating Weight	35 500 kg	78,300 lb
------------------	-----------	-----------

- Long undercarriage, Reach boom, R3.2DB (10'6") stick, HD 1.88 m³ (2.46 yd³) bucket, 700 mm (28") triple grouser shoes, and 6.8 mt (14,991 lb) counterweight.

Track

Standard Track Shoes Width	700 mm	28 in
Optional Track Shoes Width	600 mm	24 in
Optional Track Shoes Width	850 mm	33 in
Number of Shoes (each side)	49	
Number of Track Rollers (each side)	8	
Number of Carrier Rollers (each side)	2	

Drive

Gradeability	35°/70%	
Maximum Travel Speed	4.7 km/h	3 mph
Maximum Drawbar Pull	296 kN	66,611 lbf

Hydraulic System

Main System – Maximum Flow – Implement	560 L/min (280 × 2 pumps)	148 gal/min (74 × 2 pumps)
Maximum Pressure – Equipment – Implement	35 000 kPa	5,076 psi
Maximum Pressure – Travel	35 000 kPa	5,076 psi
Maximum Pressure – Swing	28 000 kPa	4,061 psi
Boom Cylinder – Bore	145 mm	6 in
Boom Cylinder – Stroke	1440 mm	57 in
Stick Cylinder – Bore	160 mm	6 in
Stick Cylinder – Stroke	1738 mm	68 in
DB Bucket Cylinder – Bore	145 mm	6 in
DB Bucket Cylinder – Stroke	1151 mm	45 in

Service Refill Capacities

Fuel Tank Capacity	600 L	158.5 gal
Cooling System	39 L	10.2 gal
Engine Oil (with filter)	25 L	6.6 gal
Swing Drive (each)	18 L	4.8 gal
Final Drive (each)	8 L	2.1 gal
Hydraulic System (including tank)	373 L	98.5 gal
Hydraulic Tank	161 L	42.5 gal
DEF Tank	50 L	13.2 gal

Standards

Brakes	ISO 10265:2008
Cab/ROPS	ISO 12117-2:2008
FOGS (optional)	ISO 10262-2:1998

Sound Performance

ISO 6395 (external)	105 dB(A)
ISO 6396 (inside cab)	72 dB(A)

- Hearing protection may be needed when operating with an open operator station and cab (when not properly maintained or doors/windows open) for extended periods or in a noisy environment.

Air Conditioning System

The air conditioning system on this machine contains the fluorinated greenhouse gas refrigerant R134a (Global Warming Potential = 1430). The system contains 1.00 kg of refrigerant, which has a CO₂ equivalent of 1.430 metric tonnes.

336 GC Hydraulic Excavator Specifications

Operating Weights and Ground Pressures

	600 mm (24") Triple Grouser Shoes		700 mm (28") Triple Grouser Shoes		850 mm (33") Triple Grouser Shoes	
	Weight	Ground Pressure	Weight	Ground Pressure	Weight	Ground Pressure
	kg (lb)	kPa (psi)	kg (lb)	kPa (psi)	kg (lb)	kPa (psi)
6.8 mt (14,991 lb) Counterweight + Long Undercarriage Base Machine						
Reach Boom + R3.2 m (10'6") DB Stick + 1.88 m ³ (2.46 yd ³) HD Bucket	35 100 (77,500)	65.5 (9.5)	35 500 (78,300)	56.7 (8.2)	36 400 (80,200)	47.8 (6.9)
Reach Boom + R2.8 m (9'2") DB Stick + 1.88 m ³ (2.46 yd ³) HD Bucket	35 000 (77,200)	65.3 (9.5)	35 400 (78,000)	56.5 (8.2)	36 300 (79,900)	47.7 (6.9)
6.8 mt (14,991 lb) Counterweight + Long Narrow Undercarriage Base Machine						
Reach Boom + R3.2 m (10'6") DB Stick + 1.88 m ³ (2.46 yd ³) HD Bucket	35 000 (77,200)	65.2 (9.5)	35 400 (78,000)	56.5 (8.2)		
Reach Boom + R2.8 m (9'2") DB Stick + 1.88 m ³ (2.46 yd ³) HD Bucket	34 900 (77,000)	65.0 (9.4)	35 300 (77,800)	56.3 (8.2)		

All operating weights include a 90% fuel tank with 75 kg (165 lb) operator.

336 GC Hydraulic Excavator Specifications

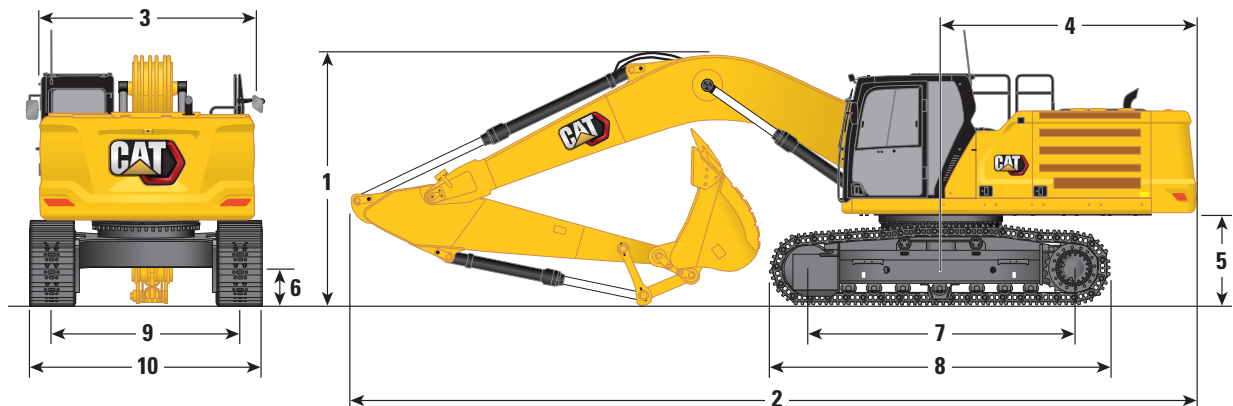
Major Component Weights

	kg	lb
Base machine with 6.8 mt (14,991 lb) counterweight, standard swing frame, base frame with HD track rollers and carrier rollers for Long undercarriage	23 840	52,560
Base machine with 6.8 mt (14,991 lb) counterweight, standard swing frame, base frame with HD track rollers and carrier rollers for Long Narrow undercarriage	23 710	52,280
Track Shoes:		
600 mm (24") Width, 11 mm (0.43") Thick, Triple Grouser	4090	9,020
700 mm (28") Width, 11 mm (0.43") Thick, Triple Grouser	4450	9,800
850 mm (33") Width, 13 mm (0.51") Thick, Triple Grouser	5300	11,690
Two Boom Cylinders	560	1,240
Weight of 90% Fuel Tank and 75 kg (165 lb) Operator	550	1,210
Counterweight:		
6.8 mt (14,991 lb) Counterweight	6800	14,990
Swing Frames:		
Standard Swing Frame	3160	6,960
Undercarriage:		
Base Frame with HD Track Rollers and Carrier Rollers for Long Undercarriage	8400	18,520
Base Frame with HD Track Rollers and Carrier Rollers for Long Narrow Undercarriage	8270	18,240
Boom (including lines, pins, stick cylinder):		
Reach Boom 6.5 m (21'4")	3140	6,910
Sticks (including lines, pins, bucket cylinder, bucket linkage):		
Reach Stick R2.8DB (9'2")	1650	3,650
Reach Stick R3.2DB (10'6")	1760	3,890
Buckets (without linkage):		
1.88 m ³ (2.46 yd ³) HD	1770	3,900
Quick Couplers:		
CW Dedicated QC	480	1,050
Pin Grabber QC	700	1,550

336 GC Hydraulic Excavator Specifications

Dimensions

All dimensions are approximate and may vary depending on bucket selection.



Boom Option

Reach Boom
6.5 m (21'4")

Stick Options

Reach Stick

R3.2DB (10'6")

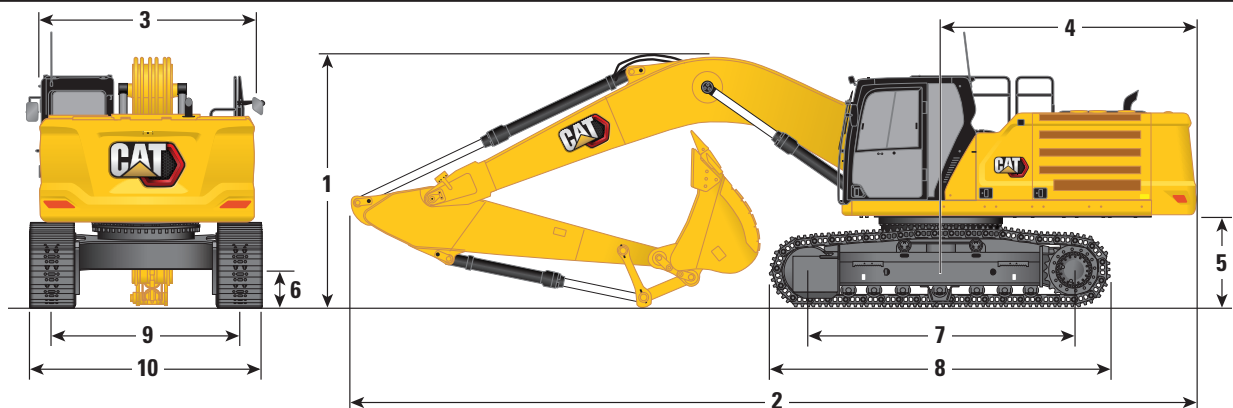
R2.8DB (9'2")

	R3.2DB (10'6")		R2.8DB (9'2")	
1 Machine Height:				
Cab Height	3170 mm	10'4"	3170 mm	10'4"
FOGS Height	3310 mm	10'10"	3310 mm	10'10"
Handrails Height	3160 mm	10'4"	3160 mm	10'4"
With Boom/Stick/Bucket Installed	3490 mm	11'5"	3670 mm	12'0"
With Boom/Stick Installed	3330 mm	10'11"	3450 mm	11'3"
With Boom Installed	2880 mm	9'5"	2880 mm	9'5"
With Boom/Stick/Bucket Installed (with auxiliary lines)	3530 mm	11'6"	3680 mm	12'0"
With Boom/Stick Installed (with auxiliary lines)	3400 mm	11'1"	3500 mm	11'5"
With Boom Installed (with auxiliary lines)	2970 mm	9'8"	2970 mm	9'8"
2 Machine Length:				
With Boom/Stick/Bucket Installed	11 180 mm	36'8"	11 220 mm	36'9"
With Boom/Stick Installed	11 140 mm	36'6"	11 190 mm	36'8"
With Boom Installed	9960 mm	32'8"	9960 mm	32'8"
With Boom/Stick/Bucket Installed (with auxiliary lines)	11 180 mm	36'8"	11 220 mm	36'9"
With Boom/Stick Installed (with auxiliary lines)	11 140 mm	36'6"	11 190 mm	36'8"
With Boom Installed (with auxiliary lines)	10 010 mm	32'10"	10 010 mm	32'10"
3 Upperframe Width without Walkways	2970 mm	9'9"	2970 mm	9'9"
4 Tail Swing Radius	3530 mm	11'6"	3530 mm	11'6"
5 Counterweight Clearance	1250 mm	4'1"	1250 mm	4'1"
6 Ground Clearance	510 mm	1'8"	510 mm	1'8"
7 Length to Center of Rollers	4040 mm	13'3"	4040 mm	13'3"
8 Track Length	5030 mm	16'6"	5030 mm	16'6"

336 GC Hydraulic Excavator Specifications

Dimensions

All dimensions are approximate and may vary depending on bucket selection.



Boom Option

Reach Boom
6.5 m (21'4")

Stick Options

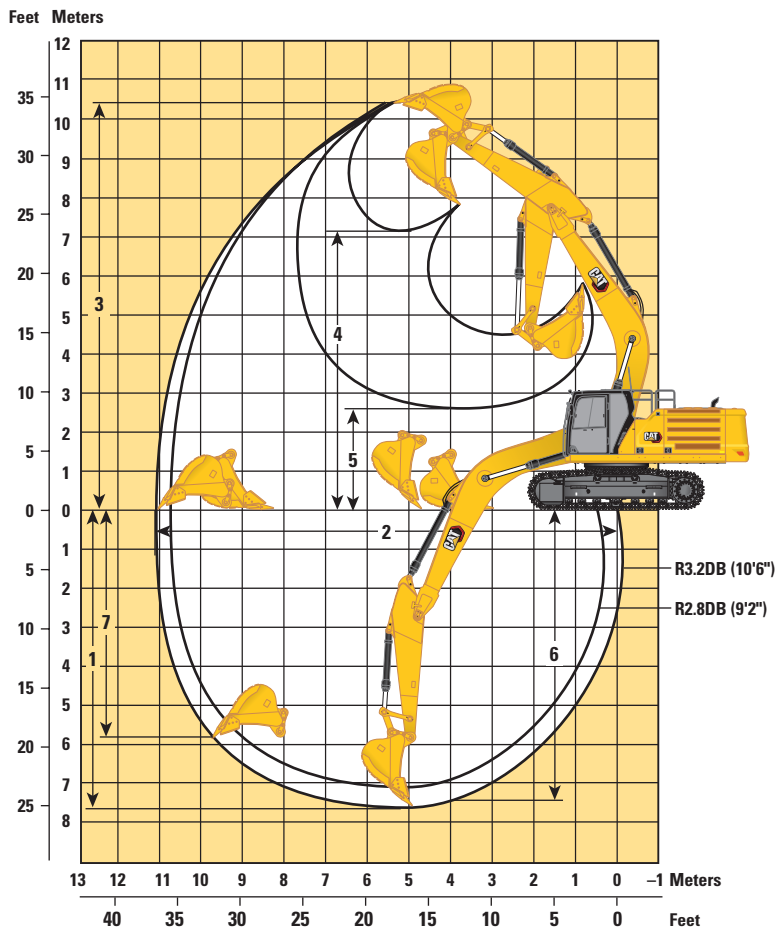
Reach Stick

	Reach Stick			
	R3.2DB (10'6")		R2.8DB (9'2")	
9 Track Gauge – Long undercarriage	2590 mm	8'5"	2590 mm	8'5"
Long Narrow undercarriage	2390 mm	7'10"	2390 mm	7'10"
10 Undercarriage Width – Long				
600 mm (24") Shoes	3190 mm	10'5"	3190 mm	10'5"
700 mm (28") Shoes	3290 mm	10'9"	3290 mm	10'9"
850 mm (33") Shoes	3440 mm	11'3"	3440 mm	11'3"
11 Undercarriage Width – Long Narrow				
600 mm (24") Shoes	2990 mm	9'10"	2990 mm	9'10"
700 mm (28") Shoes	2090 mm	10'2"	2090 mm	10'2"
Bucket Type	HD		HD	
Bucket Capacity	1.88 m ³	2.46 yd ³	1.88 m ³	2.46 yd ³
Bucket Tip Radius	1790 mm	5'10"	1790 mm	5'10"

336 GC Hydraulic Excavator Specifications

Working Ranges and Forces

All dimensions are approximate and may vary depending on bucket selection.



Boom Option

Reach Boom
6.5 m (21'4")

Stick Options

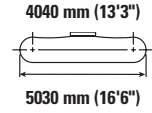
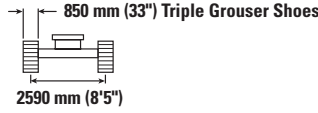
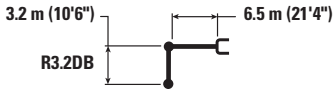
Reach Stick

	R3.2DB (10'6")		R2.8DB (9'2")	
	mm	ft/in	mm	ft/in
1 Maximum Digging Depth	7530 mm	24'8"	7130 mm	23'4"
2 Maximum Reach at Ground Line	11 060 mm	36'3"	10 760 mm	35'3"
3 Maximum Cutting Height	10 300 mm	33'9"	10 370 mm	34'0"
4 Maximum Loading Height	7070 mm	23'2"	7070 mm	23'2"
5 Minimum Loading Height	2570 mm	8'5"	2970 mm	9'8"
6 Maximum Depth Cut for 2440 mm (8'0") Level Bottom	7370 mm	24'2"	6970 mm	22'10"
7 Maximum Vertical Wall Digging Depth	5710 mm	18'8"	5680 mm	18'7"
Bucket Digging Force (ISO)	196 kN	44,090 lbf	196 kN	44,090 lbf
Stick Digging Force (ISO)	147 kN	33,090 lbf	164 kN	36,800 lbf
Bucket Type	HD		HD	
Bucket Capacity	1.88 m ³	2.46 yd ³	1.88 m ³	2.46 yd ³
Bucket Tip Radius	1790 mm	5'10"	1790 mm	5'10"

336 GC Hydraulic Excavator Specifications

Reach Boom Lift Capacities – Counterweight: 6.8 mt (14,991 lb) – without Bucket

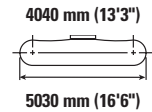
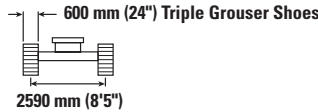
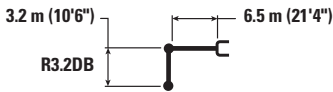
Long Undercarriage



		3000 mm/120 in		4500 mm/180 in		6000 mm/240 in		7500 mm/300 in		9000 mm/360 in		mm in		
7500 mm 300 in	kg lb							*6800	*6800			*5700 *12,600	*5700 *12,600	7700 300
6000 mm 240 in	kg lb							*7400 *16,150	*7400 *16,150			*5550 *12,200	*5550 *12,200	8580 340
4500 mm 180 in	kg lb			*11 300	*11 300	*9050 *19,650	*9050 *19,650	*7950 *17,250	7350 15,750	*6550	5500	*5550 *12,250	5350 11,800	9130 360
3000 mm 120 in	kg lb			*14 300 *30,700	*14 300 *30,700	*10 500 *22,650	9750 20,950	*8650 *18,800	7050 15,150	*7650 *16,650	5350 11,500	*5800 *12,700	5000 11,000	9410 370
1500 mm 60 in	kg lb			*16 450 *35,450	13 800 29,750	*11 750 *25,350	9250 19,900	*9350 *20,250	6800 14,600	*7950 *17,300	5200 11,200	*6200 *13,650	4850 10,700	9440 380
0 mm 0 in	kg lb			*17 150 *37,100	13 400 28,850	*12 450 *26,950	8900 19,200	*9800 *21,200	6600 14,150	8050 *17,300	5100 11,000	*6900 *15,200	4950 10,900	9220 370
-1500 mm -60 in	kg lb	*11 700 *26,400	*11 700 *26,400	*16 800 *36,400	13 300 28,650	*12 500 *27,100	8800 18,900	*9800 *21,250	6500 13,950			*8050 *17,800	5300 11,700	8750 350
-3000 mm -120 in	kg lb	*18 450 *41,850	*18 450 *41,850	*15 550 *33,650	13 450 28,900	*11 800 *25,550	8800 19,000	*9150 *19,550	6500 14,100			*8350 *18,350	6050 13,400	7960 320
-4500 mm -180 in	kg lb	*17 450 *37,500	*17 450 *37,500	*13 150 *28,200	*13 150 *28,200	*9950 *21,100	9050 19,500					*8350 *18,400	7750 17,300	6750 270

Reach Boom Lift Capacities – Counterweight: 6.8 mt (14,991 lb) – without Bucket

Long Undercarriage



		3000 mm/120 in		4500 mm/180 in		6000 mm/240 in		7500 mm/300 in		9000 mm/360 in		mm in		
7500 mm 300 in	kg lb							*6800	*6800			*5700 *12,600	*5700 *12,600	7700 300
6000 mm 240 in	kg lb							*7400 *16,150	7350 15,750			*5550 *12,200	*5550 *12,200	8580 340
4500 mm 180 in	kg lb			*11 300	*11 300	*9050 *19,650	*9050 *19,650	*7950 *17,250	7100 15,300	*6550	5300	*5550 *12,250	5200 11,450	9130 360
3000 mm 120 in	kg lb			*14 300 *30,700	*14 300 *30,700	*10 500 *22,650	9450 20,400	*8650 *18,800	6850 14,700	*7650 *16,650	5200 11,150	*5800 *12,700	4850 10,650	9410 370
1500 mm 60 in	kg lb			*16 450 *35,450	13 400 28,850	*11 750 *25,350	8950 19,300	*9350 *20,250	6550 14,150	7900 17,000	5050 10,850	*6200 *13,650	4700 10,350	9440 380
0 mm 0 in	kg lb			*17 150 *37,100	13 000 27,950	*12 450 *26,950	8650 18,600	*9800 *21,200	6350 13,700	7800 16,800	4950 10,650	*6900 *15,200	4800 10,550	9220 370
-1500 mm -60 in	kg lb	*11 700 *26,400	*11 700 *26,400	*16 800 *36,400	12 900 27,750	*12 500 *27,100	8500 18,300	*9800 *21,250	6300 13,500			*8050 *17,800	5150 11,300	8750 350
-3000 mm -120 in	kg lb	*18 450 *41,850	*18 450 *41,850	*15 550 *33,650	13 000 28,000	*11 800 *25,550	8550 18,400	*9150 *19,550	6300 13,650			*8350 *18,350	5850 13,000	7960 320
-4500 mm -180 in	kg lb	*17 450 *37,500	*17 450 *37,500	*13 150 *28,200	*13 150 *28,200	*9950 *21,100	8750 18,900					*8350 *18,400	7500 16,800	6750 270



ISO 10567



* Indicates that the load is limited by hydraulic lifting capacity rather than tipping load. The above loads are in compliance with hydraulic excavator lift capacity standard ISO 10567:2007. They do not exceed 87% of hydraulic lifting capacity or 75% of tipping load. Weight of all lifting accessories must be deducted from the above lifting capacities. Lifting capacities are based on the machine standing on a firm, uniform supporting surface. The use of a work tool attachment point to handle/lift objects, could affect the machine lift performance.

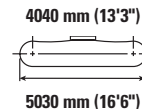
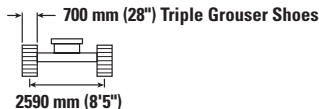
Lift capacity stays with ±5% for all available track shoes.

Always refer to the appropriate Operation and Maintenance Manual for specific product information.

336 GC Hydraulic Excavator Specifications

Reach Boom Lift Capacities – Counterweight: 6.8 mt (14,991 lb) – without Bucket

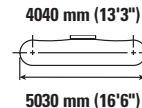
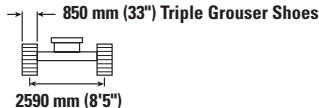
Long Undercarriage



		3000 mm/120 in		4500 mm/180 in		6000 mm/240 in		7500 mm/300 in		9000 mm/360 in		mm in		
7500 mm 300 in	kg lb							*6800	*6800			*5700 *12,600	*5700 *12,600	7700 300
6000 mm 240 in	kg lb							*7400 *16,150	*7400 15,900			*5550 *12,200	*5550 *12,200	8580 340
4500 mm 180 in	kg lb			*11 300	*11 300	*9050 *19,650	*9050 *19,650	*7950 *17,250	7200 15,450	*6550	5350	*5550 *12,250	5250 11,550	9130 360
3000 mm 120 in	kg lb			*14 300 *30,700	*14 300 *30,700	*10 500 *22,650	9550 20,550	*8650 *18,800	6900 14,850	*7650 *16,650	5250 11,250	*5800 *12,700	4900 10,750	9410 370
1500 mm 60 in	kg lb			*16 450 *35,450	13 500 29,100	*11 750 *25,350	9050 19,500	*9350 *20,250	6650 14,250	*7950 17,200	5100 10,950	*6200 *13,650	4750 10,450	9440 380
0 mm 0 in	kg lb			*17 150 *37,100	13 100 28,200	*12 450 *26,950	8700 18,800	*9800 *21,200	6450 13,850	7900 16,950	5000 10,750	*6900 *15,200	4850 10,650	9220 370
-1500 mm -60 in	kg lb	*11 700 *26,400	*11 700 *26,400	*16 800 *36,400	13 050 28,000	*12 500 *27,100	8600 18,500	*9800 *21,250	6350 13,650			*8050 *17,800	5200 11,400	8750 350
-3000 mm -120 in	kg lb	*18 450 *41,850	*18 450 *41,850	*15 550 *33,650	13 150 28,250	*11 800 *25,550	8600 18,550	*9150 *19,550	6400 13,750			*8350 *18,350	5900 13,100	7960 320
-4500 mm -180 in	kg lb	*17 450 *37,500	*17 450 *37,500	*13 150 *28,200	*13 150 *28,200	*9950 *21,100	8850 19,050					*8350 *18,400	7550 16,950	6750 270

Reach Boom Lift Capacities – Counterweight: 6.8 mt (14,991 lb) – without Bucket

Long Undercarriage



		3000 mm/120 in		4500 mm/180 in		6000 mm/240 in		7500 mm/300 in		9000 mm/360 in		mm in		
7500 mm 300 in	kg lb											*7300 *16,100	*7300 *16,100	7340 290
6000 mm 240 in	kg lb					*8450 *18,400	*8450 *18,400	*7850 *17,200	7500 16,100			*7000 *15,400	6400 14,200	8250 330
4500 mm 180 in	kg lb			*12 250 *26,200	*12 250 *26,200	*9600 *20,750	*9600 *20,750	*8300 *18,100	7300 15,700			*7000 *15,350	5650 12,500	8820 350
3000 mm 120 in	kg lb			*15 200 *32,550	14 500 31,300	*10 950 *23,700	9650 20,850	*9000 *19,500	7050 15,150	*7950	5350	*7200 *15,850	5250 11,600	9110 360
1500 mm 60 in	kg lb			*14 050 *34,250	13 700 29,550	*12 100 *26,150	9250 19,900	*9600 *20,850	6800 14,650	*8150	5250	*7700 *16,900	5150 11,300	9140 360
0 mm 0 in	kg lb			*16 550 *37,350	13 450 28,950	*12 650 *27,350	8950 19,300	*9950 *21,550	6650 14,300			8250 18,150	5250 11,550	8920 350
-1500 mm -60 in	kg lb	*10 900 *24,850	*10 900 *24,850	*16 600 *35,950	13 450 28,950	*12 500 *27,100	8850 19,100	*9850 *21,200	6550 14,150			*8450 *18,600	5650 12,500	8420 340
-3000 mm -120 in	kg lb	*19 700 *43,050	*19 700 *43,050	*15 050 *32,650	13 600 29,250	*11 600 *24,950	8950 19,250	*8750	6650			*8550 *18,800	6550 14,550	7600 300
-4500 mm -180 in	kg lb	*15 750 *33,850	*15 750 *33,850	*12 250 *26,200	*12 250 *26,200	*9100 *19,100	*9100 *19,100					*8300 *18,200	*8300 *18,200	6330 250



ISO 10567



* Indicates that the load is limited by hydraulic lifting capacity rather than tipping load. The above loads are in compliance with hydraulic excavator lift capacity standard ISO 10567:2007. They do not exceed 87% of hydraulic lifting capacity or 75% of tipping load. Weight of all lifting accessories must be deducted from the above lifting capacities. Lifting capacities are based on the machine standing on a firm, uniform supporting surface. The use of a work tool attachment point to handle/lift objects, could affect the machine lift performance.

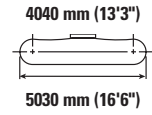
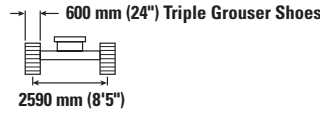
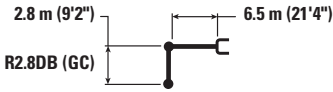
Lift capacity stays with ±5% for all available track shoes.

Always refer to the appropriate Operation and Maintenance Manual for specific product information.

336 GC Hydraulic Excavator Specifications

Reach Boom Lift Capacities – Counterweight: 6.8 mt (14,991 lb) – without Bucket

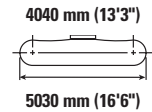
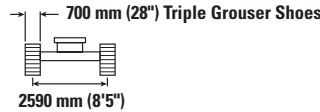
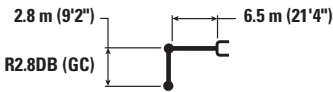
Long Undercarriage



		3000 mm/120 in		4500 mm/180 in		6000 mm/240 in		7500 mm/300 in		9000 mm/360 in		mm in		
7500 mm 300 in	kg lb											*7300 *16,100	*7300 *16,100	7340 290
6000 mm 240 in	kg lb					*8450 *18,400	*8450 *18,400	*7850 *17,200	7300 15,650			*7000 *15,400	6200 13,800	8250 330
4500 mm 180 in	kg lb			*12 250 *26,200	*12 250 *26,200	*9600 *20,750	*9600 *20,750	*8300 *18,100	7100 15,250			*7000 *15,350	5500 12,100	8820 350
3000 mm 120 in	kg lb			*15 200 *32,550	14 100 30,400	*10 950 *23,700	9400 20,250	*9000 *19,500	6850 14,700	*7950	5200	*7200 *15,850	5100 11,250	9110 360
1500 mm 60 in	kg lb			*14 050 *34,250	13 300 28,700	*12 100 *26,150	8950 19,300	*9600 *20,850	6600 14,200	7950	5100	*7700 *16,900	5000 10,950	9140 360
0 mm 0 in	kg lb			*16 550 *37,350	13 050 28,100	*12 650 *27,350	8700 18,700	*9950 *21,550	6400 13,850			8000 17,550	5100 11,200	8920 350
-1500 mm -60 in	kg lb	*10 900 *24,850	*10 900 *24,850	*16 600 *35,950	13 050 28,050	*12 500 *27,100	8600 18,500	*9850 *21,200	6350 13,700			*8450 *18,600	5500 12,100	8420 340
-3000 mm -120 in	kg lb	*19 700 *43,050	*19 700 *43,050	*15 050 *32,650	13 200 28,400	*11 600 *24,950	8650 18,650	*8750	6450			*8550 *18,800	6350 14,050	7600 300
-4500 mm -180 in	kg lb	*15 750 *33,850	*15 750 *33,850	*12 250 *26,200	*12 250 *26,200	*9100 *19,100	8950 *19,100					*8300 *18,200	*8300 *18,200	6330 250

Reach Boom Lift Capacities – Counterweight: 6.8 mt (14,991 lb) – without Bucket

Long Undercarriage



		3000 mm/120 in		4500 mm/180 in		6000 mm/240 in		7500 mm/300 in		9000 mm/360 in		mm in		
7500 mm 300 in	kg lb											*7300 *16,100	*7300 *16,100	7340 290
6000 mm 240 in	kg lb					*8450 *18,400	*8450 *18,400	*7850 *17,200	7350 15,800			*7000 *15,400	6250 13,900	8250 330
4500 mm 180 in	kg lb			*12 250 *26,200	*12 250 *26,200	*9600 *20,750	*9600 *20,750	*8300 *18,100	7150 15,400			*7000 *15,350	5550 12,200	8820 350
3000 mm 120 in	kg lb			*15 200 *32,550	14 200 30,650	*10 950 *23,700	9500 20,450	*9000 *19,500	6900 14,850	*7950	5250	*7200 *15,850	5150 11,350	9110 360
1500 mm 60 in	kg lb			*14 050 *34,250	13 450 28,950	*12 100 *26,150	9050 19,450	*9600 *20,850	6650 14,300	8000	5150	*7700 *16,900	5050 11,050	9140 360
0 mm 0 in	kg lb			*16 550 *37,350	13 150 28,350	*12 650 *27,350	8750 18,900	*9950 *21,550	6500 13,950			8050 17,750	5150 11,300	8920 350
-1500 mm -60 in	kg lb	*10 900 *24,850	*10 900 *24,850	*16 600 *35,950	13 150 28,300	*12 500 *27,100	8700 18,700	*9850 *21,200	6400 13,850			*8450 *18,600	5550 12,200	8420 340
-3000 mm -120 in	kg lb	*19 700 *43,050	*19 700 *43,050	*15 050 *32,650	13 300 28,650	*11 600 *24,950	8750 18,850	*8750	6500			*8550 *18,800	6400 14,200	7600 300
-4500 mm -180 in	kg lb	*15 750 *33,850	*15 750 *33,850	*12 250 *26,200	*12 250 *26,200	*9100 *19,100	9050 *19,100					*8300 *18,200	*8300 *18,200	6330 250



ISO 10567



* Indicates that the load is limited by hydraulic lifting capacity rather than tipping load. The above loads are in compliance with hydraulic excavator lift capacity standard ISO 10567:2007. They do not exceed 87% of hydraulic lifting capacity or 75% of tipping load. Weight of all lifting accessories must be deducted from the above lifting capacities. Lifting capacities are based on the machine standing on a firm, uniform supporting surface. The use of a work tool attachment point to handle/lift objects, could affect the machine lift performance.

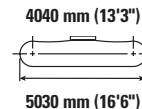
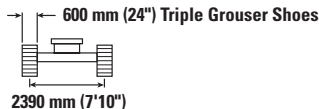
Lift capacity stays with ±5% for all available track shoes.

Always refer to the appropriate Operation and Maintenance Manual for specific product information.

336 GC Hydraulic Excavator Specifications

Reach Boom Lift Capacities – Counterweight: 6.8 mt (14,991 lb) – without Bucket

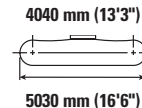
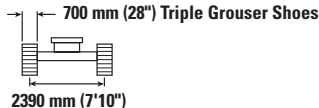
Long Narrow Undercarriage



		3000 mm/120 in		4500 mm/180 in		6000 mm/240 in		7500 mm/300 in		9000 mm/360 in		mm in		
7500 mm 300 in	kg lb							*6800	*6800			*5700 *12,600	*5700 *12,600	7700 300
6000 mm 240 in	kg lb							*7400 *16,150	6800 14,600			*5550 *12,200	5400 12,000	8580 340
4500 mm 180 in	kg lb			*11 300	*11 300	*9050 *19,650	*9050 *19,650	*7950 *17,250	6600 14,150	*6550	4900	*5550 *12,250	4800 10,550	9130 360
3000 mm 120 in	kg lb			*14 300 *30,700	13 050 28,150	*10 500 *22,650	8700 18,750	*8650 *18,800	6300 13,550	*7650 *16,650	4800 10,250	*5800 *12,700	4450 9,800	9410 370
1500 mm 60 in	kg lb			*16 450 *35,450	12 150 26,150	*11 750 *25,350	8200 17,700	*9350 *20,250	6050 13,000	7900 16,950	4650 9,950	*6200 *13,650	4350 9,500	9440 380
0 mm 0 in	kg lb			*17 150 *37,100	11 750 25,300	*12 450 *26,950	7900 17,000	*9800 *21,200	5850 12,550	7800 16,750	4550 9,800	*6900 *15,200	4400 9,650	9220 370
-1500 mm -60 in	kg lb	*11 700 *26,400	*11 700 *26,400	*16 800 *36,400	11 700 25,100	*12 500 *27,100	7750 16,700	*9800 *21,250	5750 12,350			*8050 *17,800	4700 10,350	8750 350
-3000 mm -120 in	kg lb	*18 450 *41,850	*18 450 *41,850	*15 550 *33,650	11 800 25,350	*11 800 *25,550	7800 16,800	*9150 *19,550	5800 12,500			*8350 *18,350	5400 11,900	7960 320
-4500 mm -180 in	kg lb	*17 450 *37,500	*17 450 *37,500	*13 150 *28,200	12 100 26,000	*9950 *21,100	8000 17,300					*8350 *18,400	6850 15,350	6750 270

Reach Boom Lift Capacities – Counterweight: 6.8 mt (14,991 lb) – without Bucket

Long Narrow Undercarriage



		3000 mm/120 in		4500 mm/180 in		6000 mm/240 in		7500 mm/300 in		9000 mm/360 in		mm in		
7500 mm 300 in	kg lb							*6800	*6800			*5700 *12,600	*5700 *12,600	7700 300
6000 mm 240 in	kg lb							*7400 *16,150	6850 14,700			*5550 *12,200	5450 12,100	8580 340
4500 mm 180 in	kg lb			*11 300	*11 300	*9050 *19,650	*9050 *19,650	*7950 *17,250	6650 14,250	*6550	4950	*5550 *12,250	4800 10,650	9130 360
3000 mm 120 in	kg lb			*14 300 *30,700	13 150 28,350	*10 500 *22,650	8750 18,900	*8650 *18,800	6350 13,700	*7650 *16,650	4800 10,350	*5800 *12,700	4500 9,900	9410 370
1500 mm 60 in	kg lb			*16 450 *35,450	12 250 26,400	*11 750 *25,350	8300 17,850	*9350 *20,250	6100 13,100	7950 17,100	4700 10,050	*6200 *13,650	4350 9,600	9440 380
0 mm 0 in	kg lb			*17 150 *37,100	11 850 25,550	*12 450 *26,950	7950 17,150	*9800 *21,200	5900 12,700	7850 16,900	4600 9,850	*6900 *15,200	4450 9,750	9220 370
-1500 mm -60 in	kg lb	*11 700 *26,400	*11 700 *26,400	*16 800 *36,400	11 800 25,350	*12 500 *27,100	7850 16,850	*9800 *21,250	5800 12,500			*8050 *17,800	4750 10,450	8750 350
-3000 mm -120 in	kg lb	*18 450 *41,850	*18 450 *41,850	*15 550 *33,650	11 900 25,600	*11 800 *25,550	7850 16,950	*9150 *19,550	5850 12,600			*8350 *18,350	5450 12,000	7960 320
-4500 mm -180 in	kg lb	*17 450 *37,500	*17 450 *37,500	*13 150 *28,200	12 200 26,250	*9950 *21,100	8050 17,450					*8350 *18,400	6950 15,500	6750 270



ISO 10567



* Indicates that the load is limited by hydraulic lifting capacity rather than tipping load. The above loads are in compliance with hydraulic excavator lift capacity standard ISO 10567:2007. They do not exceed 87% of hydraulic lifting capacity or 75% of tipping load. Weight of all lifting accessories must be deducted from the above lifting capacities. Lifting capacities are based on the machine standing on a firm, uniform supporting surface. The use of a work tool attachment point to handle/lift objects, could affect the machine lift performance.

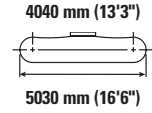
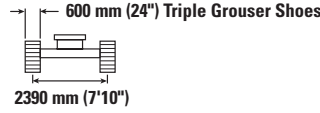
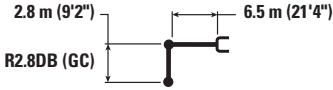
Lift capacity stays with ±5% for all available track shoes.

Always refer to the appropriate Operation and Maintenance Manual for specific product information.

336 GC Hydraulic Excavator Specifications

Reach Boom Lift Capacities – Counterweight: 6.8 mt (14,991 lb) – without Bucket

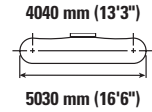
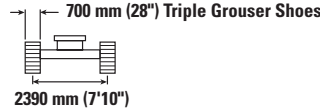
Long Narrow Undercarriage



		3000 mm/120 in		4500 mm/180 in		6000 mm/240 in		7500 mm/300 in		9000 mm/360 in		mm in		
7500 mm 300 in	kg lb											*7300 *16,100	7050 15,800	7340 290
6000 mm 240 in	kg lb					*8450 *18,400	*8450 *18,400	*7850 *17,200	6750 14,500			*7000 *15,400	5750 12,750	8250 330
4500 mm 180 in	kg lb			*12 250 *26,200	*12 250 *26,200	*9600 *20,750	9150 19,750	*8300 *18,100	6550 14,100			*7000 *15,350	5050 11,150	8820 350
3000 mm 120 in	kg lb			*15 200 *32,550	12 800 27,700	*10 950 *23,700	8650 18,600	*9000 *19,500	6300 13,550	*7950	4800	*7200 *15,850	4700 10,350	9110 360
1500 mm 60 in	kg lb			*14 050 *31,250	12 050 26,000	*12 100 *26,150	8200 17,650	*9600 *20,850	6050 13,050	7900	4700	*7700 *16,900	4600 10,050	9140 360
0 mm 0 in	kg lb			*16 550 *37,350	11 800 25,450	*12 650 *27,350	7950 17,100	*9950 *21,550	5900 12,700			7950 17,500	4650 10,300	8920 350
-1500 mm -60 in	kg lb	*10 900 *24,850	*10 900 *24,850	*16 600 *35,950	11 800 25,400	*12 500 *27,100	7850 16,900	*9850 *21,200	5850 12,550			*8450 *18,600	5050 11,100	8420 340
-3000 mm -120 in	kg lb	*19 700 *43,050	*19 700 *43,050	*15 050 *32,650	11 950 25,750	*11 600 *24,950	7900 17,050	*8750	5900			*8550 *18,800	5850 12,900	7600 300
-4500 mm -180 in	kg lb	*15 750 *33,850	*15 750 *33,850	*12 250 *26,200	*12 250 *26,200	*9100 *19,100	8200 17,750					*8300 *18,200	7700 17,200	6330 250

Reach Boom Lift Capacities – Counterweight: 6.8 mt (14,991 lb) – without Bucket

Long Narrow Undercarriage



		3000 mm/120 in		4500 mm/180 in		6000 mm/240 in		7500 mm/300 in		9000 mm/360 in		mm in		
7500 mm 300 in	kg lb											*7300 *16,100	7100 15,950	7340 290
6000 mm 240 in	kg lb					*8450 *18,400	*8450 *18,400	*7850 *17,200	6800 14,600			*7000 *15,400	5800 12,850	8250 330
4500 mm 180 in	kg lb			*12 250 *26,200	*12 250 *26,200	*9600 *20,750	9250 19,900	*8300 *18,100	6600 14,200			*7000 *15,350	5100 11,250	8820 350
3000 mm 120 in	kg lb			*15 200 *32,550	12 950 27,950	*10 950 *23,700	8700 18,800	*9000 *19,500	6350 13,650	*7950	4850	*7200 *15,850	4750 10,450	9110 360
1500 mm 60 in	kg lb			*14 050 *31,250	12 200 26,250	*12 100 *26,150	8250 17,850	*9600 *20,850	6100 13,150	8000	4750	*7700 *16,900	4600 10,150	9140 360
0 mm 0 in	kg lb			*16 550 *37,350	11 950 25,650	*12 650 *27,350	8000 17,250	*9950 *21,550	5950 12,800			8050 17,650	4700 10,400	8920 350
-1500 mm -60 in	kg lb	*10 900 *24,850	*10 900 *24,850	*16 600 *35,950	11 900 25,650	*12 500 *27,100	7900 17,050	*9850 *21,200	5900 12,700			*8450 *18,600	5100 11,200	8420 340
-3000 mm -120 in	kg lb	*19 700 *43,050	*19 700 *43,050	*15 050 *32,650	12 050 25,950	*11 600 *24,950	8000 17,200	*8750	6000			*8550 *18,800	5900 13,050	7600 300
-4500 mm -180 in	kg lb	*15 750 *33,850	*15 750 *33,850	*12 250 *26,200	*12 250 *26,200	*9100 *19,100	8250 17,900					*8300 *18,200	7750 17,350	6330 250



ISO 10567



* Indicates that the load is limited by hydraulic lifting capacity rather than tipping load. The above loads are in compliance with hydraulic excavator lift capacity standard ISO 10567:2007. They do not exceed 87% of hydraulic lifting capacity or 75% of tipping load. Weight of all lifting accessories must be deducted from the above lifting capacities. Lifting capacities are based on the machine standing on a firm, uniform supporting surface. The use of a work tool attachment point to handle/lift objects, could affect the machine lift performance.

Lift capacity stays with ±5% for all available track shoes.

Always refer to the appropriate Operation and Maintenance Manual for specific product information.

336 GC Hydraulic Excavator Specifications

Bucket Specifications and Compatibility

		Undercarriage				Counterweight		Long		Long Narrow		
		Width		Capacity		Weight		Fill	6.8 mt (14,991 lb)			
	Linkage	mm	in	m ³	yd ³	kg	lb	%	Reach Boom			
									R2.8 (9'2")	R3.2 (10'6")	R2.8 (9'2")	R3.2 (10'6")
Pin-On (No Quick Coupler)												
General Duty	DB	1350	53	1.64	2.14	1181	2,604	100	●	●	●	●
	DB	1500	60	1.88	2.44	1286	2,834	100	●	⊙	⊙	⊖
	DB	1650	65	2.12	2.77	1361	3,000	100	⊙	⊙	⊖	⊖
	DB	1800	71	2.36	3.09	1465	3,231	100	⊖	⊖	○	○
General Duty	DB	1650	65	2.12	2.77	1348	2,971	100	⊙	⊙	⊖	⊖
Heavy Duty	DB	1350	54	1.64	2.14	1450	3,196	100	●	●	●	⊙
	DB	1500	60	1.88	2.46	1545	3,408	100	●	⊙	⊙	⊖
	DB	1650	66	2.12	2.77	1677	3,697	100	⊙	⊖	⊖	○
	DB	1800	72	2.36	3.08	1774	3,911	100	⊖	○	○	○
Severe Duty	DB	1650	66	2.15	2.81	1802	3,972	90	⊙	⊖	⊖	○
Maximum load with pin-on (payload + bucket)								kg	5330	5020	4780	4480
								lb	11,751	11,067	10,538	9,877
With Cat Pin Grabber Coupler												
General Duty	DB	1350	53	1.64	2.14	1181	2,604	100	●	⊙	⊙	⊖
	DB	1500	60	1.88	2.44	1286	2,834	100	⊙	⊖	⊖	○
	DB	1650	65	2.12	2.77	1361	3,000	100	⊖	○	○	○
	DB	1800	71	2.36	3.09	1465	3,231	100	○	○	◇	◇
General Duty	DB	1650	65	2.12	2.77	1348	2,971	100	⊖	○	○	○
Heavy Duty	DB	1350	54	1.64	2.14	1450	3,196	100	⊙	⊙	⊖	○
	DB	1500	60	1.88	2.46	1545	3,408	100	⊖	⊖	○	○
	DB	1650	66	2.12	2.77	1677	3,697	100	○	○	◇	◇
	DB	1800	72	2.36	3.08	1774	3,911	100	○	◇	◇	X
Severe Duty	DB	1650	66	2.15	2.81	1802	3,972	90	⊖	○	○	◇
Maximum load with coupler (payload + bucket)								kg	4633	4325	4082	3785
								lb	10,214	9,534	9,000	8,345

The above loads are in compliance with hydraulic excavator standard EN474-5:2006 + A3:2013, they do not exceed 87% of hydraulic lifting capacity or 75% of tipping capacity with front linkage fully extended at ground line with bucket curled.

Capacity based on ISO 7451:2007.

Bucket weight with General Duty tips.

Maximum Material Density:

- 2100 kg/m³ (3,500 lb/yd³)
- ⊙ 1800 kg/m³ (3,000 lb/yd³)
- ⊖ 1500 kg/m³ (2,500 lb/yd³)
- 1200 kg/m³ (2,000 lb/yd³)
- ◇ 900 kg/m³ (1,500 lb/yd³)
- X Not Recommended

Caterpillar recommends using appropriate work tools to maximize the value customers receive from our products. Use of work tools, including buckets, which are outside of Caterpillar's recommendations or specifications for weight, dimensions, flows, pressures, etc. may result in less-than-optimal performance, including but not limited to reductions in production, stability, reliability, and component durability. Improper use of a work tool resulting in sweeping, prying, twisting and/or catching of heavy loads will reduce the life of the boom and stick.

(continued on next page)

336 GC Hydraulic Excavator Specifications

Bucket Specifications and Compatibility (continued)

		Undercarriage				Long		Long Narrow				
		Counterweight				6.8 mt (14,991 lb)						
	Linkage	Width		Capacity		Weight		Fill	Reach Boom			
		mm	in	m ³	yd ³	kg	lb		%	R2.8 (9'2")	R3.2 (10'6")	R2.8 (9'2")
With CW Quick Coupler												
General Duty	DB	1500	59	1.88	2.46	1256	2,768	100	⊙	⊙	⊖	⊖
	DB	1650	65	2.12	2.77	1334	2,940	100	⊖	⊖	○	○
Heavy Duty	DB	1350	54	1.64	2.14	1419	3,128	100	●	⊙	⊙	⊖
	DB	1500	60	1.88	2.46	1516	3,342	100	⊙	⊖	⊖	○
	DB	1650	65	2.12	2.77	1650	3,637	100	⊖	○	○	◇
Severe Duty	DB	1650	66	2.15	2.81	1775	3,913	90	⊖	⊖	○	○
Ditch Cleaning	DB	2200	87	2.40	3.14	1346	2,967	100	⊖	○	○	◇
	DB	1800	72	1.96	2.56	1163	2,564	100	⊙	⊙	⊖	⊖
	DB	2000	79	2.18	2.85	1250	2,756	100	⊖	⊖	○	○
Maximum load with coupler (payload + bucket)								kg	4856	4547	4305	4008
								lb	10,705	10,025	9,491	8,836
With CWS Quick Coupler												
General Duty	DB	1200	47	1.40	1.84	1026	2,262	100	●	●	●	●
	DB	1650	65	2.12	2.77	1227	2,815	100	⊙	⊖	⊖	○
	DB	1800	71	2.36	3.09	1372	3,025	100	⊖	○	○	◇
Heavy Duty	DB	1500	60	1.88	2.46	1461	3,221	100	⊙	⊖	⊖	○
	DB	1650	66	2.12	2.77	1581	3,486	100	⊖	○	○	○
Severe Duty	DB	1650	66	2.15	2.81	1706	3,761	90	⊖	⊖	○	○
Ditch Cleaning	DB	2400	94	2.04	2.67	1266	2,791	100	⊙	⊖	⊖	○
	DB	2200	87	2.40	3.14	1347	2,970	100	⊖	○	○	◇
Maximum load with coupler (payload + bucket)								kg	4886	4577	4335	4038
								lb	10,772	10,091	9,557	8,902

The above loads are in compliance with hydraulic excavator standard EN474-5:2006 + A3:2013, they do not exceed 87% of hydraulic lifting capacity or 75% of tipping capacity with front linkage fully extended at ground line with bucket curled.

Capacity based on ISO 7451:2007.

Bucket weight with General Duty tips.

Maximum Material Density:

- 2100 kg/m³ (3,500 lb/yd³)
- ⊙ 1800 kg/m³ (3,000 lb/yd³)
- ⊖ 1500 kg/m³ (2,500 lb/yd³)
- 1200 kg/m³ (2,000 lb/yd³)
- ◇ 900 kg/m³ (1,500 lb/yd³)

Caterpillar recommends using appropriate work tools to maximize the value customers receive from our products. Use of work tools, including buckets, which are outside of Caterpillar's recommendations or specifications for weight, dimensions, flows, pressures, etc. may result in less-than-optimal performance, including but not limited to reductions in production, stability, reliability, and component durability. Improper use of a work tool resulting in sweeping, prying, twisting and/or catching of heavy loads will reduce the life of the boom and stick.

336 GC Hydraulic Excavator Specifications

Attachments Offering Guide

Not all Attachments are available in all regions. Consult your Cat dealer for configurations available in your region.

Match
 * Working range front only
 No Match
 1800 kg/m³ (3,000 lb/yd³)
 1200 kg/m³ (2,000 lb/yd³)

PIN-ON ATTACHMENTS

Undercarriage		L		LN	
Counterweight		6.8 mt (14,991 lb)			
Boom Type		Reach		Reach	
Stick Length		2.8 m (9'2")	3.2 m (10'6")	2.8 m (9'2")	3.2 m (10'6")
Hydraulic Hammers	H140 GC S	✓	✓	✓	✓
	H140 S	✓	✓	✓	✓
	H160 GC S	✓	✓	✓	✓
	H160 S	✓	✓	✓	✓
	H180 GC S	✓	✓	✓	✓*
Multi-Processors	MP324 Concrete Cutter Jaw	✓	✓	✓	✓
	MP324 Demolition Jaw	✓	✓	✓	✓
	MP324 Pulverizer Jaw	✓	✓	✓	✓
	MP324 Shear Jaw	✓	✓	✓	✓
	MP324 Tank Shear Jaw	✓	✓	✓	✓
	MP324 Universal Jaw	✓	✓	✓	✓
	MP332 Concrete Cutter Jaw	✓	✓	✓	✓
	MP332 Demolition Jaw	✓	✓	✓	✓
	MP332 Pulverizer Jaw	✓	✓	✓	✓
	MP332 Shear Jaw	✓	✓	✓	✓
	MP332 Tank Shear Jaw	✓	✓	✓	✓*
MP332 Universal Jaw	✓	✓	✓	✓	
Demolition and Sorting Grapples	G332	✓	✓	✓	✓
	G345	✓	✓	✓	✓
Mobile Scrap and Demolition Shears	S3035	✓	✓	✓	✓
	S3035 Flat Top	✓	✓	✓	✓
Pulverizers	P225	✓	✓	✓	✓
	P235	✓	✓	✓	✓
Crushers	P325	✓	✓	✓	✓
	P335	✓	✓	✓	✓*
Compactors (Vibratory Plate)	CVP110	✓	✓	✓	✓
Orange Peel Grapples	GSH440-1150	●	●	●	●
	GSH440-1550	○	○	○	○
	GSH455-1000	●	●	●	○
	GSH455-1500	○	○	○	
	GSH555-1000	○	○	○	○
	GSM-50-1250	○			
Hydraulic Transfer Grab	CTV20-1300	●	●	●	●
	CTV20-1500	●	●	●	○
	CTV20-1700	○	○	○	○
	CTV20-1900	○	○	○	○
	CTV20-2300	○			
	CTV30-1700	○	○	○	
	CTV30-1900	○			

(continued on next page)

336 GC Hydraulic Excavator Specifications

Attachments Offering Guide *(continued)*

Not all Attachments are available in all regions. Consult your Cat dealer for configurations available in your region.

Match * Working range front only No Match

CAT PIN GRABBER COUPLER ATTACHMENTS

Undercarriage		L		LN	
Counterweight		6.8 mt (14,991 lb)			
Boom Type		Reach		Reach	
Stick Length		2.8 m (9'2")	3.2 m (10'6")	2.8 m (9'2")	3.2 m (10'6")
Hydraulic Hammers	H140 GC S	✓	✓	✓	✓*
	H140 S	✓	✓	✓	✓
	H160 GC S	✓	✓	✓	✓
	H160 S	✓	✓	✓	✓*
	H180 GC S	✓*			
Multi-Processors	MP324 Concrete Cutter Jaw	✓	✓	✓	✓
	MP324 Demolition Jaw	✓	✓	✓	✓
	MP324 Pulverizer Jaw	✓	✓	✓	✓
	MP324 Shear Jaw	✓	✓	✓	✓
	MP324 Tank Shear Jaw	✓	✓	✓	✓
	MP324 Universal Jaw	✓	✓	✓	✓
	MP332 Concrete Cutter Jaw	✓	✓	✓*	
	MP332 Demolition Jaw	✓	✓*	✓*	
	MP332 Pulverizer Jaw	✓	✓*		
	MP332 Shear Jaw	✓	✓	✓*	
	MP332 Tank Shear Jaw	✓*			
MP332 Universal Jaw	✓	✓*			
Demolition and Sorting Grapples	G332	✓	✓	✓	✓*
	G345	✓*	✓*		
Mobile Scrap and Demolition Shears	S3035	✓	✓	✓	✓*
	S3035 Flat Top	✓	✓	✓*	✓*
Pulverizers	P225	✓	✓	✓	✓
	P235	✓*			
Crushers	P325	✓	✓	✓	✓
	P335	✓*			
Compactors (Vibratory Plate)	CVP110	✓	✓	✓	✓

(continued on next page)

336 GC Hydraulic Excavator Specifications

Attachments Offering Guide *(continued)*

Not all Attachments are available in all regions. Consult your Cat dealer for configurations available in your region.

Match

* Working range front only

No Match

CW-45s DEDICATED COUPLER ATTACHMENTS

Undercarriage		L		LN	
Counterweight		6.8 mt (14,991 lb)			
Boom Type		Reach		Reach	
Stick Length		2.8 m (9'2")	3.2 m (10'6")	2.8 m (9'2")	3.2 m (10'6")
Hydraulic Hammers	H140 GC S	✓	✓	✓	✓*
	H140 S	✓	✓	✓	✓
	H160 S	✓	✓	✓	✓*
Multi-Processors	MP324 Concrete Cutter Jaw	✓	✓	✓	✓
	MP324 Demolition Jaw	✓	✓	✓	✓
	MP324 Pulverizer Jaw	✓	✓	✓	✓
	MP324 Shear Jaw	✓	✓	✓	✓
	MP324 Tank Shear Jaw	✓	✓	✓	✓
	MP324 Universal Jaw	✓	✓	✓	✓
	MP332 Concrete Cutter Jaw	✓	✓	✓	✓*
	MP332 Demolition Jaw	✓	✓	✓*	✓*
	MP332 Pulverizer Jaw	✓	✓	✓*	
	MP332 Shear Jaw	✓	✓	✓	✓*
	MP332 Tank Shear Jaw	✓*	✓*		
	MP332 Universal Jaw	✓	✓	✓*	
Demolition and Sorting Grapples	G332	✓	✓	✓	✓
	G345	✓	✓*	✓*	
Mobile Scrap and Demolition Shears	S3035	✓	✓	✓	✓*
	S3035 Flat Top	✓	✓	✓	✓*
Pulverizers	P225	✓	✓	✓	✓
	P235	✓	✓*		
Crushers	P325	✓	✓	✓	✓
	P335	✓	✓*		
Compactors (Vibratory Plate)	CVP110	✓	✓	✓	✓

(continued on next page)

336 GC Hydraulic Excavator Specifications

Attachments Offering Guide *(continued)*

Not all Attachments are available in all regions. Consult your Cat dealer for configurations available in your region.

Match
 * Working range front only
 No Match

CW-45 DEDICATED COUPLER ATTACHMENTS

Undercarriage		L		LN	
Counterweight		6.8 mt (14,991 lb)			
Boom Type		Reach		Reach	
Stick Length		2.8 m (9'2")	3.2 m (10'6")	2.8 m (9'2")	3.2 m (10'6")
Hydraulic Hammers	H140 GC S	✓	✓	✓	✓
	H140 S	✓	✓	✓	✓
	H160 S	✓	✓	✓	✓*
Multi-Processors	MP324 Concrete Cutter Jaw	✓	✓	✓	✓
	MP324 Demolition Jaw	✓	✓	✓	✓
	MP324 Pulverizer Jaw	✓	✓	✓	✓
	MP324 Shear Jaw	✓	✓	✓	✓
	MP324 Tank Shear Jaw	✓	✓	✓	✓
	MP324 Universal Jaw	✓	✓	✓	✓
	MP332 Concrete Cutter Jaw	✓	✓	✓	✓*
	MP332 Demolition Jaw	✓	✓	✓*	
	MP332 Pulverizer Jaw	✓	✓	✓*	
	MP332 Shear Jaw	✓	✓	✓	✓*
	MP332 Tank Shear Jaw	✓*			
MP332 Universal Jaw	✓	✓	✓*		
Demolition and Sorting Grapples	G332	✓	✓	✓	✓
	G345	✓	✓*		
	S3035	✓	✓	✓	✓*
Mobile Scrap and Demolition Shears	S3035 Flat Top	✓	✓	✓	✓*
Pulverizers	P225	✓	✓	✓	✓
	P235	✓	✓*		
Crushers	P325	✓	✓	✓	✓
	P335	✓*	✓*		
Compactors (Vibratory Plate)	CVP110	✓	✓	✓	✓

(continued on next page)

336 GC Hydraulic Excavator Specifications

Attachments Offering Guide *(continued)*

Not all Attachments are available in all regions. Consult your Cat dealer for configurations available in your region.

Match

* Working range front only

No Match

S80 DEDICATED COUPLER ATTACHMENTS

Undercarriage		L		LN	
Counterweight		6.8 mt (14,991 lb)			
Boom Type		Reach		Reach	
Stick Length		2.8 m (9'2")	3.2 m (10'6")	2.8 m (9'2")	3.2 m (10'6")
Hydraulic Hammers	H140 GC S	✓	✓	✓	✓
	H140 S	✓	✓	✓	✓
	H160 S	✓	✓	✓	✓
Multi-Processors	MP324 Concrete Cutter Jaw	✓	✓	✓	✓
	MP324 Demolition Jaw	✓	✓	✓	✓
	MP324 Pulverizer Jaw	✓	✓	✓	✓
	MP324 Shear Jaw	✓	✓	✓	✓
	MP324 Tank Shear Jaw	✓	✓	✓	✓
	MP324 Universal Jaw	✓	✓	✓	✓
	MP332 Concrete Cutter Jaw	✓	✓*	✓*	
	MP332 Demolition Jaw	✓	✓*		
	MP332 Pulverizer Jaw	✓	✓*		
	MP332 Shear Jaw	✓	✓*	✓*	
	MP332 Universal Jaw	✓	✓*		
Demolition and Sorting Grapples	G332	✓	✓	✓	✓
	G345	✓	✓*	✓*	
Mobile Scrap and Demolition Shears	S3035 Flat Top	✓	✓	✓	✓*
Pulverizers	P225	✓	✓	✓	✓
	P235	✓	✓*		
Crushers	P325	✓	✓	✓	✓
	P335	✓	✓*		
Compactors (Vibratory Plate)	CVP110	✓	✓	✓	✓

(continued on next page)

336 GC Hydraulic Excavator Specifications

Attachments Offering Guide (continued)

Not all Attachments are available in all regions. Consult your Cat dealer for configurations available in your region.

Match * Working range front only No Match

HCS80 COUPLER ATTACHMENTS

Undercarriage		L		LN	
Counterweight		6.8 mt (14,991 lb)			
Boom Type		Reach		Reach	
Stick Length		2.8 m (9'2")	3.2 m (10'6")	2.8 m (9'2")	3.2 m (10'6")
Hydraulic Hammers	H140 S	✓	✓	✓	✓
	H160 S	✓	✓	✓	✓
Multi-Processors	MP324 Concrete Cutter Jaw	✓	✓	✓	✓
	MP324 Demolition Jaw	✓	✓	✓	✓
	MP324 Pulverizer Jaw	✓	✓	✓	✓
	MP324 Shear Jaw	✓	✓	✓	✓
	MP324 Tank Shear Jaw	✓	✓	✓	✓
	MP324 Universal Jaw	✓	✓	✓	✓
	MP332 Concrete Cutter Jaw	✓	✓*		
	MP332 Demolition Jaw	✓*			
	MP332 Pulverizer Jaw	✓*			
	MP332 Shear Jaw	✓	✓*		
	MP332 Universal Jaw	✓*			
Demolition and Sorting Grapples	G332	✓	✓	✓	✓
	G345	✓	✓*		
Mobile Scrap and Demolition Shears	S3035 Flat Top	✓	✓	✓	✓*
Pulverizers	P225	✓	✓	✓	✓
	P235	✓			
Crushers	P325	✓	✓	✓	✓
	P335	✓*			
Compactors (Vibratory Plate)	CVP110	✓	✓	✓	✓

BOOM-MOUNT ATTACHMENTS

Undercarriage		LN	
Counterweight		6.8 mt (14,991 lb)	
Boom Type		Reach	
Mobile Scrap and Demolition Shears	S2070	✓	
	S3050	✓	
	S3070	✓*	

Standard and Optional Equipment

Standard and optional equipment may vary. Consult your Cat dealer for details.

	Standard	Optional		Standard	Optional
CAB			HYDRAULIC SYSTEM		
ROPS, standard sound suppression	✓		SmartBoom™	✓	
High-resolution 203 mm (8") LCD touchscreen monitor	✓		Boom and stick regeneration circuit	✓	
Automatic bi-level air conditioner	✓		Electronic main control valve	✓	
Jog dial and shortcut keys for monitor control	✓		Automatic hydraulic oil warm up	✓	
Keyless push-to-start engine control	✓		Reverse swing damping valve	✓	
Height-adjustable console, three steps with tool	✓		Automatic swing parking brake	✓	
Fixed left-side console	✓		High performance hydraulic return filter	✓	
Mechanically adjustable seat suspension	✓		Two speed travel	✓	
51 mm (2") orange seat belt	✓		Bio hydraulic oil capability	✓	
Bluetooth® integrated radio (no USB, aux port or microphone)	✓		Combined two-way auxiliary circuit with direct return		✓
12V DC outlets	✓		Medium-pressure auxiliary circuit		✓
Document storage	✓		Quick coupler circuit for Cat Pin Grabber and CW Dedicated		✓
Cup and bottle holders	✓		UNDERCARRIAGE AND STRUCTURES		
Openable two-piece front window	✓		Long undercarriage		✓
Upper radial wiper with washer	✓		Long Narrow undercarriage		✓
Openable steel hatch	✓		Towing eye on base frame	✓	
LED dome light	✓		Full-length track guiding guards		✓
Roller front sunscreen	✓		Center track guiding guards		✓
Roller rear sunscreen		✓	Bottom guard	✓	
Rear window emergency exit	✓		Travel motor guard	✓	
Washable floor mat	✓		Grease lubricated track	✓	
Beacon ready	✓		Base frame with HD rollers	✓	
ENGINE			6.8 mt (14,991 lb) counterweight	✓	
Two selectable modes: Power, Smart	✓		600 mm (24") triple grouser track shoes		✓
Automatic engine speed control	✓		700 mm (28") triple grouser track shoes		✓
52° C (126° F) high-ambient cooling capacity	✓		850 mm (33") triple grouser track shoes		✓
-18° C (0° F) cold start capability	✓		BOOMS, STICKS AND LINKAGES		
Hydraulic reverse fan		✓	6.5 m (21'4") reach boom	✓	
Double element air filter with integrated precleaner	✓		2.8 m (9'2") stick		✓
Dual stage four micron main filter and 10 micron primary filter with water separator and water separator indicator switch	✓		3.2 m (10'6") stick		✓
Biodiesel capability up to B20	✓		Bucket linkage, DB family without lifting eye		✓

(continued on next page)

336 GC Standard and Optional Equipment

Standard and Optional Equipment *(continued)*

Standard and optional equipment may vary. Consult your Cat dealer for details.

	Standard	Optional		Standard	Optional
ELECTRICAL SYSTEM			SAFETY AND SECURITY		
Maintenance-free 1,000 CCA batteries (×2)	✓		Caterpillar One Key security system	✓	
Centralized electrical disconnect switch	✓		Lockable external tool/storage box	✓	
LED chassis light, LH and RH boom lights, cab lights	✓		Lockable door, fuel, and hydraulic tank locks	✓	
CAT TECHNOLOGY			Lockable fuel drain compartment	✓	
Cat Product Link™	✓		Service platform with anti-skid plate and recessed bolts	✓	
Auto hammer stop	✓		RH handrail and hand hold (ISO 2867:2011 compliant)	✓	
SERVICE AND MAINTENANCE			Signaling/warning horn	✓	
Grouped location of engine oil and fuel filters	✓		Ground-level secondary engine shutoff switch	✓	
Scheduled Oil Sampling (S·O·S SM) ports	✓		Rear and right-hand-sideview cameras	✓	
Electric refueling pump with automatic shutoff		✓	Boom lowering check valve	✓	
QuickEvac™ maintenance ready		✓	Stick lowering check valve	✓	
			Falling object guard system		✓

Dealer Installed Kits and Attachments

Attachments may vary. Consult your Cat dealer for details.

CAB

- Radial lower wiper
- Polycarbonate roof hatch
- P5A glass for demolition
- RH and LH electrical pedal for tool control

SAFETY AND SECURITY

- Bluetooth receiver kit
- Bluetooth key fob

GUARDS

- Swivel guard
- Falling object guard system
- Mesh guard full front

For more complete information on Cat products, dealer services, and industry solutions, visit us on the web at www.cat.com

© 2020 Caterpillar
All rights reserved

Materials and specifications are subject to change without notice. Featured machines in photos may include additional equipment. See your Cat dealer for available options.

CAT, CATERPILLAR, LET'S DO THE WORK, their respective logos, "Caterpillar Corporate Yellow," the "Power Edge" and Cat "Modern Hex" trade dress as well as corporate and product identity used herein, are trademarks of Caterpillar and may not be used without permission.

AEXQ2236-04 (09-2020)
Replaces AEXQ2236-03
Build Number: 07C
(Europe)

