



Cat[®] 450

BACKHOE LOADER

FEATURES:

The Cat[®] 450 Backhoe Loader delivers improved machine performance, a superior hydraulic system, improved operator controls and ergonomics, and overall versatility. The 450 features the following:

- **Ergonomic Operator Station** – Adjustable Seat Mounted Controls improve ergonomics by increasing operator comfort and legroom. Operators have Loader and Backhoe Controls in the palm of their hands, whether they are facing the Loader, the Backhoe, or sitting off set. Variable Speed Steer reduces operator fatigue in applications, such as truck loading, by reducing the number of steering wheel rotations required to turn the machine. The new Spring Applied Hydraulically Released (SAHR) Parking Brake is controlled by simply pressing a button.
- **Advanced Hydraulics** – The Cat Backhoe Loader's load sensing piston pump provides full hydraulic lifting and digging forces at any engine speed. Variable flow pump matches hydraulic power to work demands. The advanced hydraulic system allows the operator to adjust Loader and Backhoe Auxiliary Flow matching attachment specifications, program Loader Bucket Kickout and Return to Dig, and Enable Parallel Lift.
- **Machine Performance** – The Cat C4.4 ACERT[™] engine delivers solid performance and meets U.S. EPA Tier 4 Final/EU Stage IV emission standards by utilizing Selective Catalytic Reduction technology with a Diesel Oxidation Catalyst. The new Backhoe design and optimized Loader Linkage increases lift capacity and breakout forces on both ends of the machine. A redesigned Loader System provides superior machine balance and stability regardless of the ground conditions.
- **Machine Versatility** – The all new Integrated Tool Carrier (IT Coupler) for Single Tilt Loader Arm configurations are available from the factory or for simple field installation. The Cat Backhoe Loader with Integrated Tool Carrier (IT Coupler) will be the most versatile machine on the job site providing quick connection to a variety of Cat Attachments.
- **Cat Attachments** – A variety of Mechanical and Hydraulic Cat Backhoe Couplers are available from the factory or for field installation. Options include, but not limited to, Dual Lock Pin Grabber Couplers and Pin Lock Couplers. Redesigned General Purpose and Multi Purpose Loader Buckets increase digging performance and improve bucket durability for long term value.

450 Backhoe Loader

Specifications

Engine

| | | |
|--------------------------------|---|---------------------|
| Engine Model | C4.4 ACERT 106 kW (143 hp) Electronic – Turbo Intercooled | |
| Ratings at 2,200 rpm | | |
| Gross Power SAE J1995 | 109 kW | 146 hp |
| Gross Power ISO 14396 | 106 kW | 143 hp |
| Net Power Rating at 2,200 rpm | | |
| SAE J1349 | 98 kW | 131 hp |
| ISO 9249 | 98 kW | 131 hp |
| Net Peak Power Rating | | |
| SAE J1349 | 100 kW | 134 hp |
| ISO 9249 | 100 kW | 134 hp |
| Bore | 105 mm | 4.13 in |
| Stroke | 127 mm | 5 in |
| Displacement | 4.4 L | 268 in ³ |
| Torque Rise (Net) at 1,400 rpm | 29% | |
| SAE J1349 | 540 N·m | 400 lb·ft |
| Power Rating Conditions | | |
| No De-Rating Required Up To | 2286 m | 7,500 ft |

Weights

| | | |
|---|-----------|-----------|
| Operating Weight – Estimated* | 10 904 kg | 24,039 lb |
| Operating Weight – Maximum (ROPS Capacity) | 13 300 kg | 29,321 lb |
| Counterweight | 974 kg | 2,147 lb |
| Cab, ROPS/FOPS | +243 kg | +536 lb |
| Loader Bucket | | |
| 1.53 m ³ (2.0 yd ³) GP (Pin-On) | +80 kg | +176 lb |
| 1.34 m ³ (1.75 yd ³) MP HD (Pin-On) | +214 kg | +472 lb |
| 1.34 m ³ (1.75 yd ³) MP ED (Pin-On) | +290 kg | +639 lb |
| 1.34 m ³ (1.75 yd ³) GP (Hook-On) | –150 kg | –331 lb |
| 1.53 m ³ (2.0 yd ³) GP (Hook-On) | –73 kg | –162 lb |
| 1.34 m ³ (1.75 yd ³) MP HD (Hook-On) | +85 kg | +187 lb |
| 1.34 m ³ (1.75 yd ³) MP ED (Hook-On) | +160 kg | +353 lb |
| Loader Quick Coupler | +250 kg | +551 lb |
| Backhoe Quick Coupler | +151 kg | +333 lb |
| Extendible Stick | +338 kg | +745 lb |

*Machine equipped with 15-19.5 12 ply front and 21L-24 16 ply rear, AWD, OROPS, 1.34 m³ (1.75 yd³) general purpose bucket with bolt-on cutting edge, standard stick, 610 mm (24") heavy-duty backhoe bucket.

GP = General Purpose

MP = Multi Purpose

HD = Heavy Duty

ED = Extreme Duty

Transmission

| | | | |
|------------------------|--|-----------|----------|
| Autoshift Transmission | | | |
| Forward – 1st | | 6.0 km/h | 3.7 mph |
| 2nd | | 9.6 km/h | 6.0 mph |
| 3rd | | 12.5 km/h | 7.8 mph |
| 4th | | 19.8 km/h | 12.3 mph |
| 5th | | 27.2 km/h | 16.9 mph |
| 6th | | 40.6 km/h | 25.2 mph |
| Reverse – 1st | | 6.0 km/h | 3.7 mph |
| 2nd | | 12.5 km/h | 7.8 mph |
| 3rd | | 27.2 km/h | 16.9 mph |

- Travel speeds of two wheel drive backhoe loader at full throttle, when equipped with 21×24 rear tires.

Axle Ratings

| | | | |
|-----------------|--|-----------|-----------|
| Front Axle, AWD | | | |
| Static | | 22 936 kg | 50,565 lb |
| Dynamic | | 9174 kg | 20,225 lb |
| Rear Axle | | | |
| Static | | 21 662 kg | 47,756 lb |
| Dynamic | | 8665 kg | 19,103 lb |

Hydraulic System

| | | |
|---------------------------|-----------------------------|--------------|
| Type | Closed Center | |
| Pump Type | Variable Flow, Axial Piston | |
| Pump Capacity @ 2,200 rpm | 220 L/min | 58.1 gal/min |
| System Pressure | | |
| Backhoe | 26 200 kPa | 3,800 psi |
| Loader | 26 200 kPa | 3,800 psi |

Steering

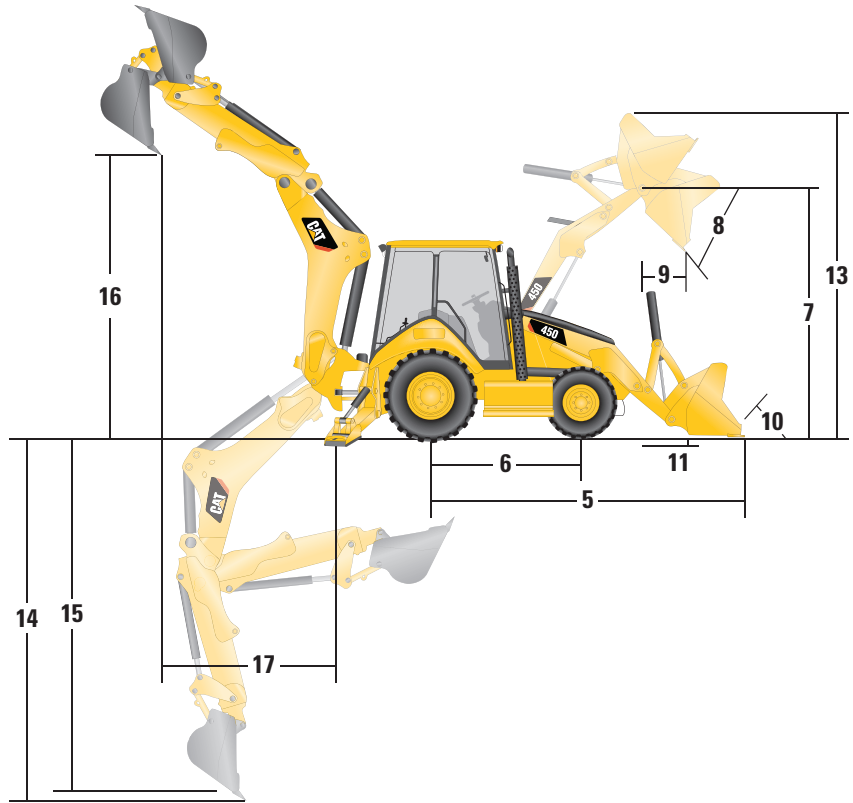
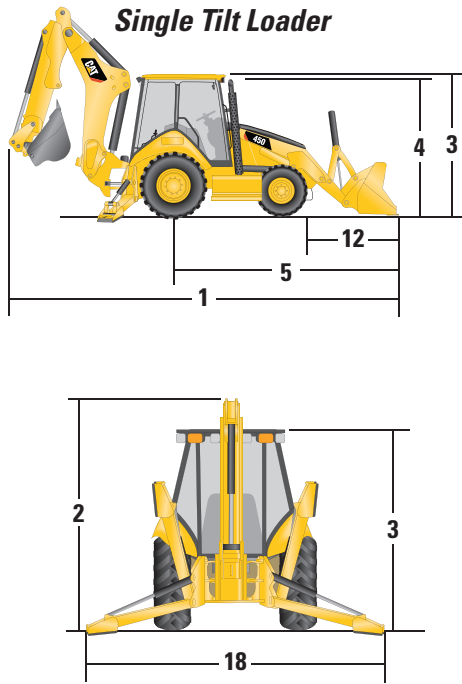
| | | |
|---|-----------------|---------|
| Type | Front Wheel | |
| Power Steering | Hydrostatic HMU | |
| Bore | 85 mm | 3.35 in |
| Stroke | 236 mm | 9.29 in |
| Rod Diameter | 42 mm | 1.65 in |
| Axle Oscillation | 11° | |
| Turning Circle – AWD (inner wheel not braked) | | |
| Outside Front Wheels | 8.396 m | 27'7" |
| Outside Widest Loader Bucket | 11.5 m | 37'9" |

- AWD cylinder, one (1) double-acting.

Service Refill Capacities

| | | |
|---|---------|----------|
| Cooling System with Cab Heater | 22.5 L | 6.0 gal |
| Fuel Tank | 160.0 L | 42.3 gal |
| Engine Oil with Filter | 8.8 L | 2.3 gal |
| Diesel Exhaust Fluid (DEF) | 19.0 L | 5.0 gal |
| Transmission (Autoshift) – AWD, Autoshift | 18.0 L | 4.8 gal |
| Rear Axle (Center Housing) | 19.0 L | 5.0 gal |
| Front Axle (Center Housing) | 11.0 L | 2.9 gal |
| Planetaries | 0.7 L | 0.2 gal |
| Hydraulic System (Minimum) | 130.0 L | 34.4 gal |
| Hydraulic Tank (Nominal) | 54.0 L | 14.3 gal |

450 Backhoe Loader



Machine Dimensions

Single Tilt Loader

| Bucket | GP (Pin-On) (1.34 m ³ /1.75 yd ³) | | GP (Pin-On) (1.53 m ³ /2.0 yd ³) | | MP HD (Pin-On) (1.34 m ³ /1.75 yd ³) | | MP ED (Pin-On) (1.34 m ³ /1.75 yd ³) | | |
|--|---|---------|--|---------|--|---------|--|---------|--------|
| | mm | ft" | mm | ft" | mm | ft" | mm | ft" | |
| 1 Overall Length (loader on ground) – Standard Stick | 7969 mm | 26'2" | 8060 mm | 26'5" | 8011 mm | 26'3" | 7982 mm | 26'2" | |
| | Overall Length (loader on ground) – Extendible Stick | 7966 mm | 26'2" | 8056 mm | 26'5" | 8007 mm | 26'3" | 7978 mm | 26'2" |
| | Overall Transport Length – Standard Stick | 7933 mm | 26'0" | 8001 mm | 26'3" | 7983 mm | 26'2" | 7961 mm | 26'1" |
| | Overall Transport Length – Extendible Stick | 7929 mm | 26'0" | 7997 mm | 26'3" | 7979 mm | 26'2" | 7957 mm | 26'1" |
| 2 Overall Transport Height – Standard Stick | 4208 mm | 13'10" | 4208 mm | 13'10" | 4208 mm | 13'10" | 4208 mm | 13'10" | |
| | Overall Transport Height – Extendible Stick | 4215 mm | 13'10" | 4215 mm | 13'10" | 4215 mm | 13'10" | 4215 mm | 13'10" |
| | Overall Width | 2415 mm | 7'11" | 2415 mm | 7'11" | 2415 mm | 7'11" | 2415 mm | 7'11" |
| 3 Height to Top of Cab/Canopy | 2767 mm | 9'1" | 2767 mm | 9'1" | 2767 mm | 9'1" | 2767 mm | 9'1" | |
| 4 Height to Top of Exhaust Stack | 2744 mm | 9'0" | 2744 mm | 9'0" | 2744 mm | 9'0" | 2744 mm | 9'0" | |
| | Height to Loader Hinge Pin (transport) | 388 mm | 1'3" | 393 mm | 1'3" | 440 mm | 1'5" | 440 mm | 1'5" |
| | Ground Clearance (LH step) | 315 mm | 1'0" | 315 mm | 1'0" | 315 mm | 1'0" | 315 mm | 1'0" |
| | Ground Clearance (AWD guard) | 319 mm | 1'1" | 319 mm | 1'1" | 319 mm | 1'1" | 319 mm | 1'1" |
| Ground Clearance (counterweight) | 306 mm | 1'0" | 306 mm | 1'0" | 306 mm | 1'0" | 306 mm | 1'0" | |
| 5 Rear Axle Centerline to Front Grill | 2841 mm | 9'4" | 2841 mm | 9'4" | 2841 mm | 9'4" | 2841 mm | 9'4" | |
| | Front Wheel Tread Gauge (track width) | 2016 mm | 6'7" | 2016 mm | 6'7" | 2016 mm | 6'7" | 2016 mm | 6'7" |
| | Rear Wheel Tread Gauge (track width) | 1814 mm | 5'11" | 1814 mm | 5'11" | 1814 mm | 5'11" | 1814 mm | 5'11" |
| 6 Wheelbase AWD | 2215 mm | 7'3" | 2215 mm | 7'3" | 2215 mm | 7'3" | 2215 mm | 7'3" | |

450 Backhoe Loader

Loader Bucket Dimensions and Performance

Single Tilt Loader

| Bucket | GP (Pin-On) (1.34 m ³ /1.75 yd ³) | | GP (Pin-On) (1.53 m ³ /2.0 yd ³) | | MP HD (Pin-On) (1.34 m ³ /1.75 yd ³) | | MP ED (Pin-On) (1.34 m ³ /1.75 yd ³) | |
|---|---|----------------------|--|----------------------|--|----------------------|--|----------------------|
| | | | | | | | | |
| Capacity (SAE rated) | 1.34 m ³ | 1.75 yd ³ | 1.53 m ³ | 2.00 yd ³ | 1.34 m ³ | 1.75 yd ³ | 1.34 m ³ | 1.75 yd ³ |
| Width | 2450 mm | 8'0" | 2450 mm | 8'0" | 2450 mm | 8'0" | 2450 mm | 8'0" |
| Lift Capacity at Maximum Height | 4031 kg | 8,886 lb | 3984 kg | 8,783 lb | 3793 kg | 8,362 lb | 3754 kg | 8,276 lb |
| Lift Breakout Force | 52 397 N | 11,779 lbf | 50 273 N | 11,301 lbf | 49 986 N | 11,237 lbf | 49 791 N | 11,193 lbf |
| Tilt Breakout Force | 60 323 N | 13,561 lbf | 54 655 N | 12,286 lbf | 57 425 N | 12,909 lbf | 58 429 N | 13,135 lbf |
| Tipping Load at Breakout Point | 7399 kg | 16,312 lb | 7050 kg | 15,543 lb | 7102 kg | 15,656 lb | 7131 kg | 15,720 lb |
| 7 Maximum Hinge Pin Height | 3649 mm | 12'0" | 3649 mm | 12'0" | 3649 mm | 12'0" | 3649 mm | 12'0" |
| 8 Dump Angle at Full Height | 43° | | 43° | | 43° | | 43° | |
| Dump Height at Maximum Angle | 2740 mm | 9'0" | 2679 mm | 8'9" | 2709 mm | 8'11" | 2730 mm | 8'11" |
| 9 Dump Reach at Maximum Angle | 901 mm | 2'11" | 968 mm | 3'2" | 920 mm | 3'0" | 905 mm | 3'0" |
| 10 Maximum Bucket Rollback at Ground Level | 41° | | 41° | | 43° | | 43° | |
| 11 Digging Depth | 133 mm | 5" | 132 mm | 5" | 143 mm | 6" | 138 mm | 5" |
| Maximum Grading Angle | 107° | | 105° | | 106° | | 107° | |
| Width of Dozer Cutting Edge | N/A | | N/A | | 2438 mm | 8'0" | 2438 mm | 8'0" |
| 12 Grill to Bucket Cutting Edge, Carry Position | 1753 mm | 5'9" | 1822 mm | 6'0" | 1802 mm | 5'11" | 1779 mm | 5'10" |
| 13 Maximum Operating Height | 4753 mm | 15'7" | 4856 mm | 15'11" | 4758 mm | 15'7" | 4758 mm | 15'7" |
| Jaw Opening Maximum | N/A | | N/A | | 1019 mm | 3'4" | 1019 mm | 3'4" |
| Bucket Jaw Clamping Force | N/A | | N/A | | 36 635 N | 8,236 lbf | 36 635 N | 8,236 lbf |
| Weight (does not include teeth or forks) | 1010 kg | 2,227 lb | 1090 kg | 2,403 lb | 1224 kg | 2,698 lb | 1300 kg | 2,866 lb |

Backhoe Dimensions and Performance

| | Standard Stick | | E-Stick Retracted | | E-Stick Extended | |
|--|----------------|------------|-------------------|------------|------------------|------------|
| 14 Digging Depth, SAE (maximum) | 5185 mm | 17'0" | 5185 mm | 17'0" | 6417 mm | 21'1" |
| 15 Digging Depth, 2440 mm (8'0") Flat Bottom | 4831 mm | 15'10" | 4831 mm | 15'10" | 6131 mm | 20'1" |
| Digging Depth, 610 mm (2'0") Flat Bottom | 5146 mm | 16'11" | 5146 mm | 16'11" | 6380 mm | 20'11" |
| Reach from Rear Axle Centerline at Ground Line | 7902 mm | 25'11" | 7902 mm | 25'11" | 9065 mm | 29'9" |
| 16 Reach from Swing Pivot at Ground Line | 6651 mm | 21'10" | 6651 mm | 21'10" | 7814 mm | 25'8" |
| Overall Operating Height | 6462 mm | 21'2" | 6464 mm | 21'2" | 7217 mm | 23'8" |
| Loading Height | 4536 mm | 14'11" | 4518 mm | 14'10" | 5252 mm | 17'3" |
| 17 Loading Reach | 2225 mm | 7'4" | 2239 mm | 7'4" | 3281 mm | 10'9" |
| Swing Arc | 175° | | 175° | | 175° | |
| Bucket Rotation | 198° | | 198° | | 198° | |
| 18 Stabilizer Spread, Operating Position (outside edge of pad) | 4224 mm | 13'10" | 4224 mm | 13'10" | 4224 mm | 13'10" |
| Stabilizer Spread, Transport Position | 2245 mm | 7'4" | 2245 mm | 7'4" | 2245 mm | 7'4" |
| Bucket Dig Force | 79 108 N | 17,784 lbf | 79 116 N | 17,786 lbf | 79 116 N | 17,786 lbf |
| Stick Dig Force | 52 953 N | 11,904 lbf | 53 669 N | 12,065 lbf | 40 573 N | 9,121 lbf |

STANDARD EQUIPMENT

- 5185 mm (17 ft) center pivot excavator style backhoe
- Adjustable auxiliary flow controls, loader and backhoe
- Air cleaner
- Alarm, back-up
- Alternator, 150 amp
- Audible system fault alarm
- Automatic Engine Speed Control (AESC)
- Autoshift transmission with six (6) forward and three (3) reverse gears and neutral safety switch
- Backhoe Safety Manual
- Battery Box, external, lockable
- Battery disconnect switch
- Battery, maintenance-free, 1,000 CCA
- Boom transport lock
- Brace, lift cylinder
- Brake, SAHR secondary parking
- Brakes, hydraulically boosted, oil disc, dual pedals, interlocking
- Canopy, ROPS/FOPS
- Cat cushion swing system
- CD-ROM Parts Manual
- Coat restraint
- Coolant/antifreeze, extended life
- Counterweight, bumper, 974 kg (2,147 lb)
- Diagnostic port for engine, machine and gauge cluster Electronic Control Modules
- Differential lock, loader joystick
- Dome light (cab only)
- Engine enclosure, sound suppression removal panels
- Engine, Cat C4.4 ACERT (Direct Injection Turbocharged), meets Tier 4 Final/Stage IV emission standards, selective catalyst reduction, diesel oxidation catalyst (DOC)
- Face seals, O-ring
- Fan, suction and guard
- Fast reversing shuttle, all gears
- Fenders, rear
- Filters, bowl and cartridge: fuel, hydraulic fluid
- Filters, spin-on: engine oil, transmission oil, water separator
- Flashing hazards/signal lights
- Floor mat
- Four Wheel Drive/Brake Mode Selector
- Fuel tank, fully enclosed
- Fully hinged front grill for cooling package cleaning access
- Ground level fuel fill and DEF fill
- Guard, boom protection plate
- Guards, stabilizer, rock
- Hammer cup
- High ambient cooling package
- Hood lock, inside cab
- Hydraulic hose, XT™
- Hydraulic oil cooler
- Hydraulic oil level sight gauge
- Hydraulic valves, backhoe six (6) function
- Hydraulic valves, loader three (3) function
- Hydraulics, load sensing with variable displacement piston pump and flow sharing valve
- Indicator lights: hydraulic implement lockout, hydraulic filter bypass, water in fuel, operator presence, remote dial throttle active, air filter blocked, engine warning, machine locked (if equipped), warning lamp, emissions module malfunction, low battery/charging system warning, high hydraulic oil temperature; LCD warnings: engine oil pressure, service due, high coolant temperature, auto idle shutdown, high torque converter temperature
- Instrument panel lights
- Joystick controls: electrohydraulic controls with pattern changer valve
- Key start/stop system
- LCD operator screen
- Lights, working (four [4] front, four [4] rear)
- Loader joystick, self-leveling, return-to-dig, transmission disconnect switch, Forward/Neutral/Reverse Switch, MP Auxiliary roller
- Loader, single tilt
- Machine Security System integrated into LCD operator display
- Mirror, rearview
- One-touch low idle
- Open circuit breather
- Operations and Maintenance Manual
- Pattern changer, in cab
- Power receptacle, 12 volt, one (1) internal + one (1) USB, two (2) external
- Product Link™
- Radio ready (Cab)
- Ride Control
- Rubber impact strips on radiator guards
- Seat belt, retractable, 51 mm (2 in)
- Seat mounted controls
- Seat, air suspension with armrest
- Stabilizer shoes, reversible
- Stabilizers, electrohydraulic, auto-up function
- Starting system, glow plugs
- Steering knob
- Steering, hydrostatic
- Stop and tail lights
- Storage compartment (Cab/Canopy), lockable
- Storage tray, electronics and miscellaneous items
- Swing transport lock
- Throttle, hand and foot, electronic
- Tilt steering wheel (Canopy), Tilt/telescoping (Cab)
- Tire Valve Stem Protection
- Tires
- Torque converter
- Transmission neutralizer switch
- Transport tie-downs
- Vandalism locks, four (4)
- Vandalism protection, gauge cover (Canopy)
- Warning horn, electric

450 Optional Equipment

OPTIONAL EQUIPMENT

- Battery, additional, 1,000 CCA
- Cab, deluxe with air conditioning
- Cold weather fuel (-30° C/-22° F)
- Cold weather package, including additional battery, engine block heater, radiator antifreeze, cold weather fuel (-30° C/-22° F) and mounting for an ether bottle
- Fenders, front with integral steps
- Guard, stabilizer, stab leg bottom
- Hydraulic lines, combined function auxiliary
- Hydraulic valves, loader quick coupler
- Lights, LED work lights, wide and spot
- Loader, Quick Coupler
- Quick Coupler, backhoe, hydraulic, dual lock
- Radio and CD player, Bluetooth®
- Rotating beacon, magnetic mount
- Seat belt, 75 mm (3 in)
- Seat, heated
- Stick, extendible
- Work Tool Attachments such as buckets, flip over forks, hammers and vibratory plate compactors. See your Cat dealer for more information.

The following information applies to the machine at the time of final manufacture as configured for sale in the regions covered in this document. The content of this declaration is valid as of the date issued; however, content related to machine features and specifications are subject to change without notice. For additional information, please see the machine's Operation and Maintenance Manual.

For more information on sustainability in action and our progress, please visit <https://www.caterpillar.com/en/company/sustainability>.

Engine

- The Cat® C4.4 engine meets U.S. EPA Tier 4 Final and EU Stage V emission standards.
- Cat diesel engines are required to use ULSD (ultra-low sulfur diesel fuel with 15 ppm of sulfur or less) or ULSD blended with the following lower-carbon intensity fuels up to:
 - ✓ 20% biodiesel FAME (fatty acid methyl ester)
 - ✓ 100% renewable diesel, HVO (hydrotreated vegetable oil) and GTL (gas-to-liquid) fuels
 Refer to guidelines for successful application. Please consult your Cat dealer or "Caterpillar Machine Fluids Recommendations" (SEBU6250) for details.

Air Conditioning System

- The air conditioning system on this machine contains the fluorinated greenhouse gas refrigerant R134a (Global Warming Potential = 1430). The system contains 1.6 kg (3.5 lb) of refrigerant which has a CO₂ equivalent of 2.3 metric tonnes (2.5 tons).

Paint

- Based on best available knowledge, the maximum allowable concentration, measured in parts per million (PPM), of the following heavy metals in paint are:
 - Barium < 0.01%
 - Cadmium < 0.01%
 - Chromium < 0.01%
 - Lead < 0.01%

Sound Performance

Operator Sound Pressure Level (SAE J1166 FEB2014) – 83 dB(A)*
 Exterior Sound Power Level (SAE J1166 FEB 2014) – 79 dB(A)

*Measurements were conducted with properly installed and maintained cab doors and windows closed.

Oils and Fluids

- Caterpillar factory fills with ethylene glycol coolants. Cat Diesel Engine Antifreeze/Coolant (DEAC) and Cat Extended Life Coolant (ELC) can be recycled. Consult your Cat dealer for more information.
- Cat Bio HYDO™ Advanced is an EU Ecolabel approved biodegradable hydraulic oil.
- Additional fluids are likely to be present, please consult the Operations and Maintenance Manual or the Application and Installation guide for complete fluid recommendations and maintenance intervals.

Features and Technology

- The following features and technology may contribute to fuel savings and/or carbon reduction. Features may vary. Consult your Cat dealer for details.
 - Save fuel and reduce your greenhouse gas emissions with efficiency features such as operator control modes selectable through the display and with fuel management modes.
 - Extended maintenance intervals not only reduce downtime but decrease the amount of fluid and filters that are replaced over the life of the machine.
 - Auto Idle helps reduce unnecessary fuel burn and greenhouse gas emissions by allowing the engine to automatically go into idle mode when the machine is not working.

Recycling

- The materials included in machines are categorized as below with approximate weight percentage. Because of variations of product configurations, the following values in the table may vary.

| Material Type | Weight Percentage |
|--------------------------|-------------------|
| Steel | 61.28% |
| Iron | 19.65% |
| Fluid | 3.61% |
| Other | 3.45% |
| Rubber | 3.25% |
| Nonferrous Metal | 2.86% |
| Uncategorized | 2.81% |
| Plastic | 1.50% |
| Mixed-Metal and Nonmetal | 1.07% |
| Mixed Metal | 0.50% |
| Mixed Nonmetallic | 0.02% |
| Total | 100.00% |

- A machine with higher recyclability rate will ensure more efficient usage of valuable natural resources and enhance End-of-Life value of the product. According to ISO 16714 (Earthmoving machinery – Recyclability and recoverability – Terminology and calculation method), recyclability rate is defined as percentage by mass (mass fraction in percent) of the new machine potentially able to be recycled, reused, or both.

All parts in the bill of material are first evaluated by component type based on a list of components defined by the ISO 16714 and Japan CEMA (Construction Equipment Manufacturers Association) standards. Remaining parts are further evaluated for recyclability based on material type.

Because of variations of product configurations, the following value in the table may vary.

Recyclability – 94%

450 Backhoe Loader

For more complete information on Cat products, dealer services, and industry solutions, visit us on the web at www.cat.com

© 2023 Caterpillar
All rights reserved

Materials and specifications are subject to change without notice. Featured machines in photos may include additional equipment. See your Cat dealer for available options.

CAT, CATERPILLAR, LET'S DO THE WORK, their respective logos, "Caterpillar Corporate Yellow," the "Power Edge" and Cat "Modern Hex" trade dress as well as corporate and product identity used herein, are trademarks of Caterpillar and may not be used without permission.

AEHQ8168-01 (07-2023)

Replaces AEHQ8168-00

Build Number: 07A

(N Am)

