



Cat[®] 450

BACKHOE LOADER

FEATURES:

The Cat[®] 450 Backhoe Loader delivers improved machine performance, a superior hydraulic system, improved operator controls and ergonomics, and overall versatility. The 450 features the following:

- **Ergonomic Operator Station** – Adjustable Seat Mounted Controls improve ergonomics by increasing operator comfort and legroom. Operators have Loader and Backhoe Controls in the palm of their hands, whether they are facing the Loader, the Backhoe, or sitting off set. Variable Speed Steer reduces operator fatigue in applications, such as truck loading, by reducing the number of steering wheel rotations required to turn the machine. The Spring Applied Hydraulically Released (SAHR) Parking Brake is controlled by simply pressing a button.
- **Advanced Hydraulics** – The Cat Backhoe Loader's load sensing piston pump provides full hydraulic lifting and digging forces at any engine speed. Variable flow pump matches hydraulic power to work demands. The advanced hydraulic system allows the operator to adjust Loader and Backhoe Auxiliary Flow matching attachment specifications, program Loader Bucket Kickout and Return to Dig, and Enable Parallel Lift.
- **Advanced Control Settings** – When equipped with the optional cab and touchscreen LCD display, operators can achieve greater precision and customization with advanced Loader and Hoe Modulation Response Settings. The Loader Modulation and Response setting allows the operator to independently adjust modulation for the Lift and Tilt cylinders, optimizing machine behavior for specific tasks such as material handling with forks or other Cat attachments. This added flexibility enhances both productivity and operator control. The Hoe Modulation and Response by Function setting provides advanced control for the excavator end of the machine. Instead of applying a single modulation or response setting – such as “Fine, Normal, Coarse” or “Slow, Medium, Fast” – users can now independently adjust settings for each hydraulic function, including Swing, Boom, Stick, and Bucket. This level of control allows operators to tailor machine performance to their specific preferences and job requirements.
- **Machine Performance** – The Cat C3.6 engine delivers solid performance and meets U.S. EPA Tier 4 Final/EU Stage IV emission standards by utilizing Selective Catalytic Reduction technology with a Diesel Oxidation Catalyst. With an optimized Loader Linkage, lift capacities and breakout forces increase on both ends of the machine. The Loader System provides superior machine balance and stability regardless of ground conditions.
- **Machine Versatility** – The Integrated Tool Carrier (IT Coupler) for Single Tilt Loader Arm configurations are available from the factory or for simple field installation. The Cat Backhoe Loader with Integrated Tool Carrier (IT Coupler) will be the most versatile machine on the job site providing quick connection to a variety of Cat Attachments.
- **Cat Attachments** – A variety of Mechanical and Hydraulic Cat Backhoe Couplers are available from the factory or for field installation. Options include, but not limited to, Dual Lock Pin Grabber Couplers and Pin Lock Couplers. Redesigned General Purpose and Multi Purpose Loader Buckets increase digging performance and improve bucket durability for long term value.

450 Backhoe Loader

Specifications

Engine

Engine Model	C3.6L 106 kW (142 hp) Electronic – Turbo Intercooled	
Ratings at 2,200 rpm		
Gross Power SAE J1995	108 kW	145 hp
Gross Power ISO 14396	106 kW	142 hp
Net Power Rating at 2,200 rpm		
SAE J1349	97 kW	130 hp
ISO 9249	97 kW	130 hp
Net Peak Power Rating at 2,000 rpm		
SAE J1349	99 kW	133 hp
ISO 9249	99 kW	133 hp
Bore	98 mm	3.86 in
Stroke	120 mm	4.7 in
Displacement	3.6 L	220 in ³
Torque Rise (Net) at 1,400 rpm	30%	
SAE J1349	546 N·m	404 lb·ft
Power Rating Conditions		
No De-Rating Required Up To	2286 m	7,500 ft

Weights

Operating Weight – Estimated*	11 033 kg	24,324 lb
Operating Weight – Maximum (Rollover Protective Structure [ROPS] Capacity)	13 300 kg	29,321 lb
Counterweight	974 kg	2,147 lb
Cab, ROPS/Falling Object Protective Structure (FOPS)	+243 kg	+536 lb
Loader Bucket		
1.53 m ³ (2.0 yd ³) GP (Pin-On)	+80 kg	+176 lb
1.34 m ³ (1.75 yd ³) MP HD (Pin-On)	+214 kg	+472 lb
1.34 m ³ (1.75 yd ³) MP ED (Pin-On)	+290 kg	+639 lb
1.34 m ³ (1.75 yd ³) GP (Hook-On)	–150 kg	–331 lb
1.53 m ³ (2.0 yd ³) GP (Hook-On)	–73 kg	–162 lb
1.34 m ³ (1.75 yd ³) MP HD (Hook-On)	+85 kg	+187 lb
1.34 m ³ (1.75 yd ³) MP ED (Hook-On)	+160 kg	+353 lb
Loader Quick Coupler	+250 kg	+551 lb
Backhoe Quick Coupler	+151 kg	+333 lb
Extendible Stick	+338 kg	+745 lb

*Machine equipped with 15-19.5 12 ply front and 21L-24 16 ply rear, All Wheel Drive (AWD), Open Roll Over Protective Structure (OROPS), 1.34 m³ (1.75 yd³) general purpose bucket with bolt-on cutting edge, standard stick, 610 mm (24") heavy-duty backhoe bucket.

GP = General Purpose

MP = Multi Purpose

HD = Heavy Duty

ED = Extreme Duty

Transmission

Autoshift Transmission		
Forward – 1st	6.0 km/h	3.7 mph
2nd	9.6 km/h	6.0 mph
3rd	12.5 km/h	7.8 mph
4th	19.9 km/h	12.4 mph
5th	27.4 km/h	17.0 mph
6th	41.1 km/h	25.5 mph
Reverse – 1st	6.0 km/h	3.7 mph
2nd	12.5 km/h	7.8 mph
3rd	27.4 km/h	17.0 mph

- Travel speeds of two wheel drive backhoe loader at full throttle, when equipped with 21×24 rear tires.

Axle Ratings

Front Axle, AWD		
Static	22 936 kg	50,565 lb
Dynamic	9174 kg	20,225 lb
Rear Axle		
Static	21 662 kg	47,756 lb
Dynamic	8665 kg	19,103 lb

Hydraulic System

Type	Closed Center	
Pump Type	Variable Flow, Axial Piston	
Pump Capacity @ 2,200 rpm	220 L/min	58.1 gal/min
System Pressure		
Backhoe	26 200 kPa	3,800 psi
Loader	26 200 kPa	3,800 psi

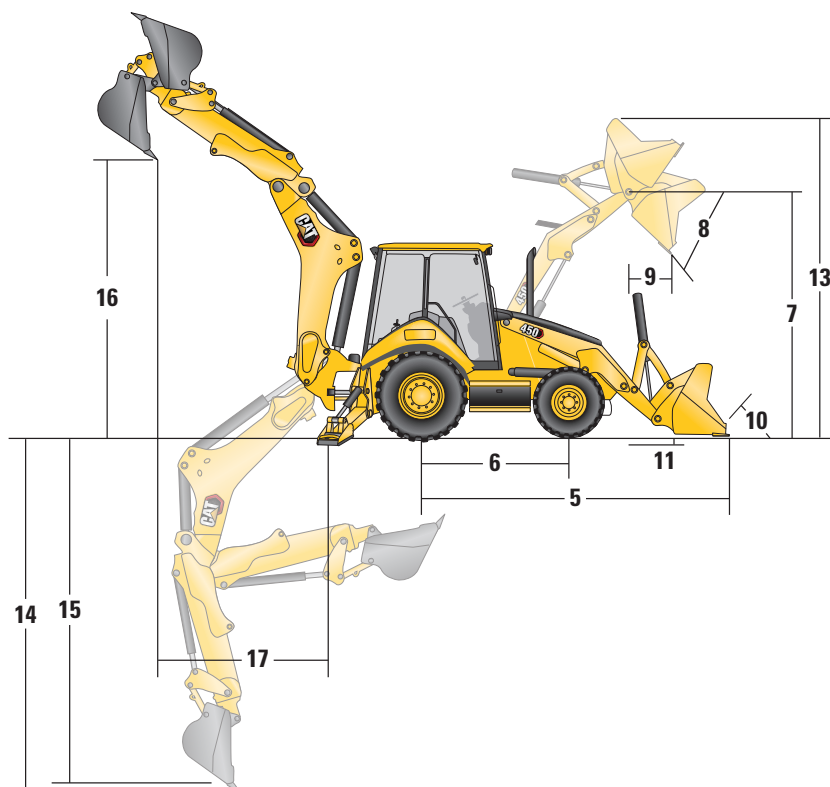
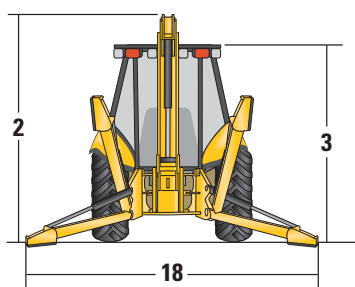
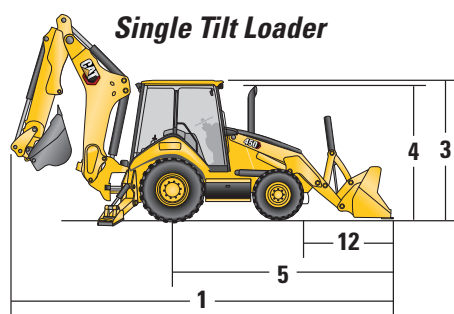
Steering

Type	Front Wheel	
Power Steering	Hydrostatic Hydro-Mechanical Unit (HMU)	
Bore	85 mm	3.35 in
Stroke	236 mm	9.29 in
Rod Diameter	42 mm	1.65 in
Axle Oscillation	11°	
Turning Circle – AWD (inner wheel not braked)		
Outside Front Wheels	8.396 m	27'7"
Outside Widest Loader Bucket	11.5 m	37'9"

- AWD cylinder, one (1) double-acting.

Service Refill Capacities

Cooling System with Cab Heater	22.5 L	6.0 gal
Fuel Tank	160.0 L	42.3 gal
Engine Oil with Filter	9.0 L	2.4 gal
Diesel Exhaust Fluid (DEF)	19.0 L	5.0 gal
Transmission (Autoshift) – AWD, Autoshift	18.0 L	4.8 gal
Rear Axle (Center Housing)	19.0 L	5.0 gal
Front Axle (Center Housing)	11.0 L	2.9 gal
Planetaries	0.7 L	0.2 gal
Hydraulic System (Minimum)	108.0 L	28.6 gal
Hydraulic Tank (Nominal)	42.0 L	11.1 gal



Machine Dimensions

Single Tilt Loader

Bucket	GP (Pin-On) (1.34 m³/1.75 yd³)		GP (Pin-On) (1.53 m³/2.0 yd³)		MP HD (Pin-On) (1.34 m³/1.75 yd³)		MP ED (Pin-On) (1.34 m³/1.75 yd³)	
1 Overall Length (loader on ground) – Standard Stick	7969 mm	26'2"	8060 mm	26'5"	8011 mm	26'3"	7982 mm	26'2"
Overall Length (loader on ground) – Extendible Stick	7966 mm	26'2"	8056 mm	26'5"	8007 mm	26'3"	7978 mm	26'2"
Overall Transport Length – Standard Stick	7933 mm	26'0"	8001 mm	26'3"	7983 mm	26'2"	7961 mm	26'1"
Overall Transport Length – Extendible Stick	7929 mm	26'0"	7997 mm	26'3"	7979 mm	26'2"	7957 mm	26'1"
2 Overall Transport Height – Standard Stick	4208 mm	13'10"	4208 mm	13'10"	4208 mm	13'10"	4208 mm	13'10"
Overall Transport Height – Extendible Stick	4215 mm	13'10"	4215 mm	13'10"	4215 mm	13'10"	4215 mm	13'10"
Overall Width	2415 mm	7'11"	2415 mm	7'11"	2415 mm	7'11"	2415 mm	7'11"
3 Height to Top of Cab/Canopy	2767 mm	9'1"	2767 mm	9'1"	2767 mm	9'1"	2767 mm	9'1"
4 Height to Top of Exhaust Stack	2744 mm	9'0"	2744 mm	9'0"	2744 mm	9'0"	2744 mm	9'0"
Height to Loader Hinge Pin (transport)	388 mm	1'3"	393 mm	1'3"	440 mm	1'5"	440 mm	1'5"
Ground Clearance (Left Hand [LH] step)	315 mm	1'0"	315 mm	1'0"	315 mm	1'0"	315 mm	1'0"
Ground Clearance (AWD guard)	319 mm	1'1"	319 mm	1'1"	319 mm	1'1"	319 mm	1'1"
Ground Clearance (counterweight)	306 mm	1'0"	306 mm	1'0"	306 mm	1'0"	306 mm	1'0"
5 Rear Axle Centerline to Front Grill	2841 mm	9'4"	2841 mm	9'4"	2841 mm	9'4"	2841 mm	9'4"
Front Wheel Tread Gauge (track width)	2016 mm	6'7"	2016 mm	6'7"	2016 mm	6'7"	2016 mm	6'7"
Rear Wheel Tread Gauge (track width)	1814 mm	5'11"	1814 mm	5'11"	1814 mm	5'11"	1814 mm	5'11"
6 Wheelbase AWD	2215 mm	7'3"	2215 mm	7'3"	2215 mm	7'3"	2215 mm	7'3"

450 Backhoe Loader

Loader Bucket Dimensions and Performance

Bucket	Single Tilt Loader							
	GP (Pin-On) (1.34 m³/1.75 yd³)		GP (Pin-On) (1.53 m³/2.0 yd³)		MP HD (Pin-On) (1.34 m³/1.75 yd³)		MP ED (Pin-On) (1.34 m³/1.75 yd³)	
Capacity (SAE rated)	1.34 m³	1.75 yd³	1.53 m³	2.00 yd³	1.34 m³	1.75 yd³	1.34 m³	1.75 yd³
Width	2450 mm	8'0"	2450 mm	8'0"	2450 mm	8'0"	2450 mm	8'0"
Lift Capacity at Maximum Height	4031 kg	8,886 lb	3984 kg	8,783 lb	3793 kg	8,362 lb	3754 kg	8,276 lb
Lift Breakout Force	52 397 N	11,779 lbf	50 273 N	11,301 lbf	49 986 N	11,237 lbf	49 791 N	11,193 lbf
Tilt Breakout Force	60 323 N	13,561 lbf	54 655 N	12,286 lbf	57 425 N	12,909 lbf	58 429 N	13,135 lbf
Tipping Load at Breakout Point	7399 kg	16,312 lb	7050 kg	15,543 lb	7102 kg	15,656 lb	7131 kg	15,720 lb
7 Maximum Hinge Pin Height	3649 mm	12'0"	3649 mm	12'0"	3649 mm	12'0"	3649 mm	12'0"
8 Dump Angle at Full Height	43°		43°		43°		43°	
Dump Height at Maximum Angle	2740 mm	9'0"	2679 mm	8'9"	2709 mm	8'11"	2730 mm	8'11"
9 Dump Reach at Maximum Angle	901 mm	2'11"	968 mm	3'2"	920 mm	3'0"	905 mm	3'0"
10 Maximum Bucket Rollback at Ground Level	41°		41°		43°		43°	
11 Digging Depth	133 mm	5"	132 mm	5"	143 mm	6"	138 mm	5"
Maximum Grading Angle	107°		105°		106°		107°	
Width of Dozer Cutting Edge	N/A		N/A		2438 mm	8'0"	2438 mm	8'0"
12 Grill to Bucket Cutting Edge, Carry Position	1753 mm	5'9"	1822 mm	6'0"	1802 mm	5'11"	1779 mm	5'10"
13 Maximum Operating Height	4753 mm	15'7"	4856 mm	15'11"	4758 mm	15'7"	4758 mm	15'7"
Jaw Opening Maximum	N/A		N/A		1019 mm	3'4"	1019 mm	3'4"
Bucket Jaw Clamping Force	N/A		N/A		36 635 N	8,236 lbf	36 635 N	8,236 lbf
Weight (does not include teeth or forks)	1010 kg	2,227 lb	1090 kg	2,403 lb	1224 kg	2,698 lb	1300 kg	2,866 lb

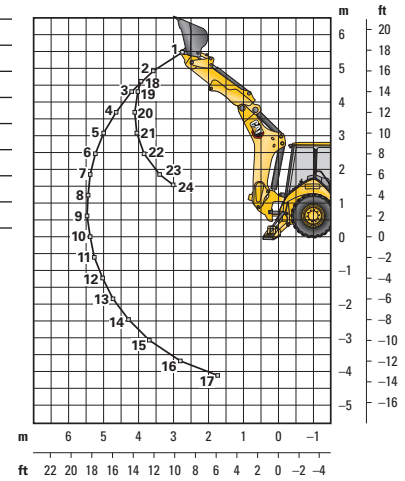
Backhoe Dimensions and Performance

	Standard Stick		E-Stick Retracted		E-Stick Extended	
14 Digging Depth, SAE (maximum)	5185 mm	17'0"	5185 mm	17'0"	6417 mm	21'1"
15 Digging Depth, 2440 mm (8'0") Flat Bottom	4831 mm	15'10"	4831 mm	15'10"	6131 mm	20'1"
Digging Depth, 610 mm (2'0") Flat Bottom	5146 mm	16'11"	5146 mm	16'11"	6380 mm	20'11"
Reach from Rear Axle Centerline at Ground Line	7902 mm	25'11"	7902 mm	25'11"	9065 mm	29'9"
16 Reach from Swing Pivot at Ground Line	6651 mm	21'10"	6651 mm	21'10"	7814 mm	25'8"
Overall Operating Height	6462 mm	21'2"	6464 mm	21'2"	7217 mm	23'8"
Loading Height	4536 mm	14'11"	4518 mm	14'10"	5252 mm	17'3"
17 Loading Reach	2225 mm	7'4"	2239 mm	7'4"	3281 mm	10'9"
Swing Arc	175°		175°		175°	
Bucket Rotation	198°		198°		198°	
18 Stabilizer Spread, Operating Position (outside edge of pad)	4224 mm	13'10"	4224 mm	13'10"	4224 mm	13'10"
Stabilizer Spread, Transport Position	2245 mm	7'4"	2245 mm	7'4"	2245 mm	7'4"
Bucket Dig Force	79 108 N	17,784 lbf	79 116 N	17,786 lbf	79 116 N	17,786 lbf
Stick Dig Force	52 953 N	11,904 lbf	53 669 N	12,065 lbf	40 573 N	9,121 lbf

Backhoe Lift Capacity

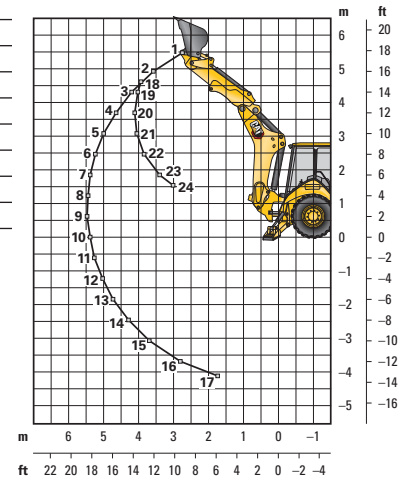
Cat 450 Standard Stick

Boom Lifting	Load (87%)		Tip Limited	Load (100%)		Stick Lifting	Load (87%)		Tip Limited	Load (100%)	
	kg	lb		kg	lb		kg	lb		kg	lb
1	2848	6,279	no	3274	7,217	18	2880	6,349	no	3310	7,298
2	2850	6,283	no	3276	7,222	19	3170	6,989	no	3644	8,034
3	2758	6,080	no	3170	6,989	20	3568	7,866	no	4101	9,042
4	2645	5,831	no	3040	6,703	21	3860	8,511	no	4437	9,782
5	2531	5,579	no	2909	6,413	22	4195	9,247	no	4821	10,629
6	2420	5,336	no	2782	6,133	23	4843	10,677	no	5567	12,272
7	2316	5,106	no	2662	5,869	24	5670	12,499	no	6517	14,367
8	2219	4,891	no	2550	5,622						
9	2127	4,689	no	2445	5,390						
10	2041	4,500	no	2346	5,173						
11	1961	4,323	no	2254	4,969						
12	1885	4,156	no	2167	4,777						
13	1814	3,999	no	2085	4,597						
14	1747	3,851	no	2008	4,426						
15	1683	3,711	no	1935	4,265						
16	1625	3,583	no	1868	4,118						
17	1604	3,536	no	1843	4,064						



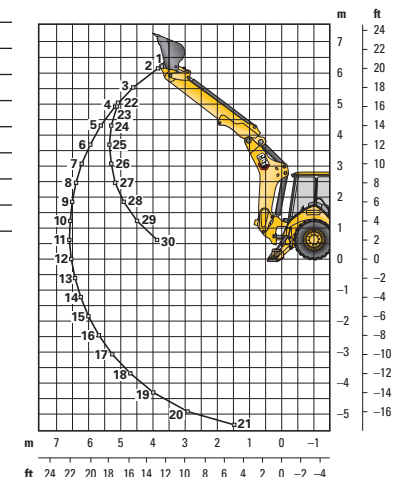
Cat 450 Extendable Stick – Retracted

Boom Lifting	Load (87%)		Tip Limited	Load (100%)		Stick Lifting	Load (87%)		Tip Limited	Load (100%)	
	kg	lb		kg	lb		kg	lb		kg	lb
1	2671	5,890	no	3071	6,770	18	2727	6,013	no	3135	6,912
2	2649	5,840	no	3045	6,712	19	3018	6,653	no	3468	7,647
3	2543	5,607	no	2923	6,445	20	3415	7,528	no	3925	8,653
4	2422	5,339	no	2784	6,137	21	3706	8,171	no	4260	9,392
5	2301	5,073	no	2645	5,831	22	4039	8,905	no	4643	10,235
6	2186	4,819	no	2512	5,539	23	4685	10,329	no	5385	11,872
7	2077	4,579	no	2387	5,263	24	5509	12,145	no	6332	13,960
8	1975	4,354	no	2270	5,004						
9	1879	4,143	no	2160	4,762						
10	1789	3,945	no	2057	4,534						
11	1704	3,757	no	1959	4,319						
12	1624	3,579	no	1866	4,114						
13	1546	3,409	no	1777	3,918						
14	1471	3,243	no	1691	3,727						
15	1395	3,076	no	1604	3,535						
16	1312	2,892	no	1508	3,325						
17	1220	2,690	no	1402	3,092						



Cat 450 Extendable Stick – Extended

Boom Lifting	Load (87%)		Tip Limited	Load (100%)		Stick Lifting	Load (87%)		Tip Limited	Load (100%)	
	kg	lb		kg	lb		kg	lb		kg	lb
1	1629	3,591	no	1872	4,128	22	1528	3,369	no	1756	3,872
2	1651	3,640	no	1898	4,184	23	1584	3,492	no	1821	4,014
3	1745	3,846	no	2005	4,421	24	1820	4,012	no	2092	4,612
4	1755	3,870	no	2018	4,448	25	1990	4,386	no	2287	5,042
5	1733	3,821	no	1992	4,392	26	2130	4,695	no	2448	5,396
6	1696	3,739	no	1949	4,298	27	2267	4,998	no	2606	5,744
7	1652	3,641	no	1898	4,185	28	2432	5,362	no	2796	6,164
8	1604	3,536	no	1844	4,065	29	2681	5,911	no	3082	6,795
9	1556	3,430	no	1788	3,942	30	3193	7,039	no	3670	8,091
10	1508	3,325	no	1733	3,822						
11	1462	3,223	no	1680	3,704						
12	1417	3,124	no	1629	3,591						
13	1375	3,031	no	1581	3,484						
14	1336	2,944	no	1535	3,384						
15	1299	2,864	no	1493	3,292						
16	1267	2,793	no	1456	3,210						
17	1240	2,734	no	1425	3,142						
18	1222	2,694	no	1405	3,097						
19	1223	2,695	no	1405	3,098						
20	1285	2,832	no	1477	3,256						
21	1758	3,877	no	2021	4,456						



Lift capacities are over-end values in accordance with SAE J31.

Machine equipped with 610 mm (24") HD hoe bucket, 4WD, OROPS, 1.34 m³ (1.75 yd³) cyd GP loader bucket.

When using the lifting eye, do not exceed the safe working load (SWL) of the link.

450 Optional Equipment

STANDARD EQUIPMENT

- 5185 mm (17 ft) center pivot excavator style backhoe
- Adjustable auxiliary flow controls, loader and backhoe
- Air cleaner
- Alarm, back-up
- Alternator, 150 amp
- Audible system fault alarm
- Automatic Engine Speed Control (AESC)
- Autoshift transmission with six (6) forward and three (3) reverse gears and neutral safety switch
- Backhoe Safety Manual
- Battery Box, external, lockable
- Battery disconnect switch
- Battery, maintenance-free, 850 CCA
- Boom transport lock
- Brace, lift cylinder
- Brake, SAHR secondary parking
- Brakes, hydraulically boosted, oil disc, dual pedals, interlocking
- Canopy, ROPS/FOPS
- Cat cushion swing system
- Coat restraint
- Coolant/antifreeze, extended life
- Counterweight, bumper, 974 kg (2,147 lb)
- Diagnostic port for engine, machine and gauge cluster Electronic Control Modules
- Differential lock, loader joystick
- Dome light (cab only)
- Engine enclosure, sound suppression removal panels
- Engine, Cat C3.6L (Direct Injection Turbocharged), meets Tier 4 Final/Stage IV emission standards, selective catalyst reduction, diesel oxidation catalyst (DOC)
- Face seals, O-ring
- Fan, suction and guard
- Fast reversing shuttle, all gears
- Fenders, rear
- Filters, bowl and cartridge: fuel, hydraulic fluid
- Filters, spin-on: engine oil, transmission oil, water separator
- Flashing hazards/signal lights
- Floor mat
- Four Wheel Drive/Brake Mode Selector
- Fuel tank, fully enclosed
- Fully hinged front grill for cooling package cleaning access
- Ground level fuel fill and DEF fill
- Guard, boom protection plate
- Guards, stabilizer, rock
- Hammer cup
- High ambient cooling package
- Hood lock, inside cab
- Hydraulic hose, XT™
- Hydraulic oil cooler
- Hydraulic oil level sight gauge
- Hydraulic valves, backhoe six (6) function
- Hydraulic valves, loader three (3) function
- Hydraulics, load sensing with variable displacement piston pump and flow sharing valve
- Indicator lights: hydraulic implement lockout, hydraulic filter bypass, water in fuel, operator presence, remote dial throttle active, air filter blocked, engine warning, machine locked (if equipped), warning lamp, emissions module malfunction, low battery/charging system warning, high hydraulic oil temperature; LCD warnings: engine oil pressure, service due, high coolant temperature, auto idle shutdown, high torque converter temperature
- Instrument panel lights
- Joystick controls: electrohydraulic controls with pattern changer valve
- Key start/stop system
- Lights, working (four [4] front, four [4] rear)
- Loader joystick, self-leveling, return-to-dig, transmission disconnect switch, Forward/Neutral/Reverse Switch, MP Auxiliary roller
- Loader, single tilt
- Machine Security System integrated into LCD operator display
- Mirror, rearview
- One-touch low idle
- Open circuit breather
- Operations and Maintenance Manual
- Pattern changer, in cab
- Power receptacle, 12 volt, one (1) internal + one (1) USB, two (2) external
- Product Link™
- Radio ready (Cab)
- Ride Control
- Rubber impact strips on radiator guards
- Seat belt, retractable, 51 mm (2 in)
- Seat mounted controls
- Seat, air suspension with armrest
- Softkey LCD display
- Stabilizer shoes, reversible
- Stabilizers, electrohydraulic, auto-up function
- Starting system, glow plugs
- Steering knob
- Steering, hydrostatic
- Stop and tail lights
- Storage compartment (Cab/Canopy), lockable
- Storage tray, electronics and miscellaneous items
- Swing transport lock
- Throttle, hand and foot, electronic
- Tilt steering wheel (Canopy), Tilt/telescoping (Cab)
- Tire Valve Stem Protection
- Tires
- Torque converter
- Transmission neutralizer switch
- Transport tie-downs
- Vandalism locks, four (4)
- Vandalism protection, gauge cover (Canopy)
- Warning horn, electric

OPTIONAL EQUIPMENT

- Battery, additional, 850 CCA
- Cab, deluxe with air conditioning
- Cold weather fuel (–30° C/–22° F)
- Cold weather package, including additional battery, engine block heater, radiator antifreeze, cold weather fuel (–30° C/–22° F) and mounting for an ether bottle
- Fenders, front with integral steps
- Guard, stabilizer, stab leg bottom
- Hydraulic lines, combined function auxiliary
- Hydraulic valves, loader quick coupler
- Lights, LED work lights, wide and spot
- Loader, Quick Coupler
- Quick Coupler, backhoe, hydraulic, dual lock
- Radio and CD player, Bluetooth®
- Rear pod-mounted controls
- Rotating beacon, magnetic mount
- Seat belt, 75 mm (3 in)
- Seat, heated
- Stick, extendible
- Touchscreen LCD display
- Work Tool Attachments such as buckets, flip over forks, hammers and vibratory plate compactors. See your Cat dealer for more information.

The following information applies to the machine at the time of final manufacture as configured for sale in the regions covered in this document. The content of this declaration is valid as of the date issued; however, content related to machine features and specifications are subject to change without notice. For additional information, please see the machine's Operation and Maintenance Manual.

For more information on sustainability in action and our progress, please visit <https://www.caterpillar.com/en/company/sustainability>.

Engine

- The Cat® C3.6L engine meets U.S. EPA Tier 4 Final and EU Stage V emission standards.
- Cat diesel engines are required to use ULSD (ultra-low sulfur diesel fuel with 15 ppm of sulfur or less) or ULSD blended with the following lower-carbon intensity fuels up to:
 - ✓ 20% biodiesel FAME (fatty acid methyl ester)
 - ✓ 100% renewable diesel, HVO (hydrotreated vegetable oil) and GTL (gas-to-liquid) fuels
 Refer to guidelines for successful application. Please consult your Cat dealer or "Caterpillar Machine Fluids Recommendations" (SEBU6250) for details.

Air Conditioning System

- The air conditioning system on this machine contains the fluorinated greenhouse gas refrigerant R134a (Global Warming Potential = 1430). The system contains 1.6 kg (3.5 lb) of refrigerant which has a CO₂ equivalent of 2.3 metric tonnes (2.5 tons).

Paint

- Based on best available knowledge, the maximum allowable concentration, measured in parts per million (PPM), of the following heavy metals in paint are:
 - Barium < 0.01%
 - Cadmium < 0.01%
 - Chromium < 0.01%
 - Lead < 0.01%

Sound Performance

Operator Sound Pressure Level (SAE J1166 MAR 2021) is 80 dB(A)*
 Exterior Sound Pressure Level (SAE J88 June 2013) is 80 dB(A)*

- For optimum sound and fuel saving, it is recommended to operate the machine in standard mode as it is listed in the OMM.
- *Measurements were conducted with properly installed and maintained cab doors and windows closed.

Oils and Fluids

- Caterpillar factory fills with ethylene glycol coolants. Cat Diesel Engine Antifreeze/Coolant (DEAC) and Cat Extended Life Coolant (ELC) can be recycled. Consult your Cat dealer for more information.
- Cat Bio HYDO™ Advanced is an EU Ecolabel approved biodegradable hydraulic oil.
- Additional fluids are likely to be present, please consult the Operations and Maintenance Manual or the Application and Installation guide for complete fluid recommendations and maintenance intervals.

Features and Technology

- The following features and technology may contribute to fuel savings and/or carbon reduction. Features may vary. Consult your Cat dealer for details.
 - Save fuel and reduce your greenhouse gas emissions with efficiency features such as operator control modes selectable through the display and with fuel management modes.
 - Extended maintenance intervals not only reduce downtime but decrease the amount of fluid and filters that are replaced over the life of the machine.
 - Auto Idle helps reduce unnecessary fuel burn and greenhouse gas emissions by allowing the engine to automatically go into idle mode when the machine is not working.

Recycling

- The materials included in machines are categorized as below with approximate weight percentage. Because of variations of product configurations, the following values in the table may vary.

Material Type	Weight Percentage
Steel	61.28%
Iron	19.65%
Fluid	3.61%
Other	3.45%
Rubber	3.25%
Nonferrous Metal	2.86%
Uncategorized	2.81%
Plastic	1.50%
Mixed-Metal and Nonmetal	1.07%
Mixed Metal	0.50%
Mixed Nonmetallic	0.02%
Total	100.00%

- A machine with higher recyclability rate will ensure more efficient usage of valuable natural resources and enhance End-of-Life value of the product. According to ISO 16714 (Earthmoving machinery – Recyclability and recoverability – Terminology and calculation method), recyclability rate is defined as percentage by mass (mass fraction in percent) of the new machine potentially able to be recycled, reused, or both.

All parts in the bill of material are first evaluated by component type based on a list of components defined by the ISO 16714 and Japan CEMA (Construction Equipment Manufacturers Association) standards. Remaining parts are further evaluated for recyclability based on material type.

Because of variations of product configurations, the following value in the table may vary.

Recyclability – 94%

450 Backhoe Loader

For more complete information on Cat products, dealer services, and industry solutions, visit us on the web at www.cat.com

© 2025 Caterpillar
All rights reserved

Materials and specifications are subject to change without notice. Featured machines in photos may include additional equipment. See your Cat dealer for available options.

CAT, CATERPILLAR, LET'S DO THE WORK, VisionLink, their respective logos, "Caterpillar Corporate Yellow," the "Power Edge" and Cat "Modern Hex" trade dress as well as corporate and product identity used herein, are trademarks of Caterpillar and may not be used without permission.

AEHQ8168-03 (10-2025)
Replaces AEHQ8168-02
Build Number: 07C
(N Am)

