



330 GC

Hydraulic Excavator

Technical Specifications

Configurations and features may vary by region. Please consult your Cat® dealer for availability in your area.

Table of Contents

Specifications	2
Engine	2
Swing Mechanism	2
Weights	2
Track	2
Drive	2
Hydraulic System	2
Service Refill Capacities	2
Standards	2
Sound Performance	2
Operating Weights and Ground Pressures	3
Major Component Weights	3
Dimensions	4
Working Ranges and Forces	5
Reach Boom Lift Capacities	6
Bucket Specifications and Compatibility	7
Attachments Offering Guide	9
Thumb Specifications	11
Standard and Optional Equipment	12
Dealer Installed Kits and Attachments	14
330 GC Environmental Declaration	15

330 GC Hydraulic Excavator Specifications

Engine

Engine Model	Cat® C7.1	
Net Power		
ISO 9249	150 kW	201 hp
ISO 9249 (DIN)	204 hp (metric)	
Engine Power		
ISO 14396	151 kW	202 hp
ISO 14396 (DIN)	205 hp (metric)	
Bore	105 mm	4 in
Stroke	135 mm	5 in
Displacement	7.01 L	428 in ³
Biodiesel capability	Up to B20 ⁽¹⁾	

- Meets U.S. EPA Tier 4 Final, EU Stage V, Korea Tier 5, and Japan 2014 emission standards.
- Recommended for use up to 4500 m (14,760 ft) altitude with engine power derate above 3000 m (9,840 ft).
- Advertised power is tested per the specified standard in effect at the time of manufacture.
- Net power advertised is the power available at the flywheel when the engine is equipped with fan, air intake system, exhaust system and alternator.
- Engine speed at 2,200 rpm.

⁽¹⁾Cat diesel engines are required to use ULSD (ultra-low sulfur diesel fuel with 15 ppm of sulfur or less) or ULSD blended with the following lower-carbon intensity fuels up to:

- ✓ 20% biodiesel FAME (fatty acid methyl ester)*
- ✓ 100% renewable diesel, HVO (hydrogenated vegetable oil) and GTL (gas-to-liquid) fuels

Refer to guidelines for successful application. Please consult your Cat dealer or “Caterpillar Machine Fluids Recommendations” (SEBU6250) for details.

*Engines with no aftertreatment devices can use higher blends, up to 100% biodiesel.

Swing Mechanism

Swing Speed	11.5 rpm	
Maximum Swing Torque	105 kN·m	77,370 lbf-ft

Weights

Operating Weight	30 800 kg	67,900 lb
------------------	-----------	-----------

- Long undercarriage, Reach boom, R3.2 m (10'6") stick, HD 1.54 m³ (2.01 yd³) bucket, 800 mm (31") triple grouser shoes and 6700 kg (14,770 lb) counterweight.

Track

Standard Track Shoes Width	800 mm	31 in
Number of Shoes (each side)	50	
Number of Track Rollers (each side)	9	
Number of Carrier Rollers (each side)	2	

Drive

Gradeability	35°/70%	
Maximum Travel Speed	5.3 km/h	3.3 mph
Maximum Drawbar Pull	248 kN	55,753 lbf

Hydraulic System

Main System – Maximum Flow – Implement	560 L/min (280 × 2 pumps)	148 gal/min (74 × 2 pumps)
Maximum Pressure – Equipment	35 000 kPa	5,075 psi
Maximum Pressure – Travel	35 000 kPa	5,075 psi
Maximum Pressure – Swing	28 400 kPa	4,120 psi
Boom Cylinder – Bore	140 mm	6 in
Boom Cylinder – Stroke	1407 mm	55 in
Stick Cylinder – Bore	150 mm	6 in
Stick Cylinder – Stroke	1646 mm	65 in
Bucket Cylinder – Bore	135 mm	5 in
Bucket Cylinder – Stroke	1156 mm	46 in

Service Refill Capacities

Fuel Tank Capacity	474 L	125.2 gal
Cooling System	25 L	6.6 gal
Engine Oil	25 L	6.6 gal
Swing Drive	10 L	2.6 gal
Final Drive (each)	5.5 L	1.5 gal
Hydraulic System (including tank)	310 L	81.9 gal
Hydraulic Tank	147 L	38.8 gal
Diesel Exhaust Fluid (DEF) Tank	41 L	10.8 gal

Standards

Brakes	ISO 10265:2008
Cab/ROPS	ISO 12117-2:2008
FOGS (optional)	ISO 10262:1998 Level II

Sound Performance

ISO 6395 (external)	103 dB(A)
ISO 6396 (inside cab)	70 dB(A)

- When properly installed and maintained, the cab offered by Caterpillar, when tested with doors and windows closed according to ANSI/SAE J1166 OCT98, meets OSHA and MSHA requirements for operator sound exposure limits in effect at time of manufacture.
- Hearing protection may be needed when operating with an open operator station and cab (when not properly maintained or doors/windows open) for extended periods or in a noisy environment.

330 GC Hydraulic Excavator Specifications

Operating Weights and Ground Pressures

Base Machine Configurations	800 mm (31") Triple Grouser Shoes			
	Weight		Ground Pressure	
Base Frame with Track Rollers and Carrier Rollers				
6700 kg (14,770 lb) Counterweight and Long Undercarriage Base Machine				
Reach Boom + R3.2CB2 (10'6") Stick + 1.54 m ³ (2.01 yd ³) HD Bucket	30 800 kg	67,900 lb	44.0 kPa	6.4 psi
Reach Boom + R3.75CB2 (12'4") Stick + 1.54 m ³ (2.01 yd ³) HD Bucket	31 000 kg	68,400 lb	44.2 kPa	6.4 psi

All operating weights include a 90% fuel tank with 75 kg (165 lb) operator.

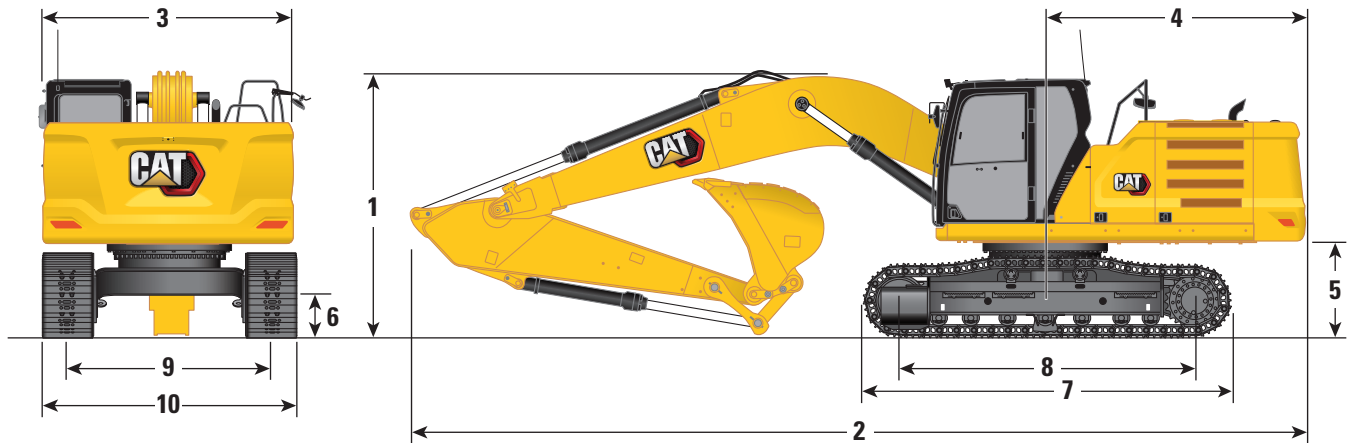
Major Component Weights

	kg	lb
Base machine (with 6700 kg [14,770 lb] counterweight, upper frame, long undercarriage with HD rollers and two boom cylinders) – weight of 90% fuel tank and 75 kg (165 lb) operator not included.	20 880	46,000
Track Shoes:		
800 mm (31") Width, 13 mm (0.51") Thick, Triple Grouser Track Shoes with Step Extension	4590	10,120
Two Boom Cylinders	490	1,080
Weight of 90% Fuel Tank and 75 kg (165 lb) Operator	460	1,010
Counterweight:		
6700 kg (14,770 lb) Counterweight	6700	14,770
Boom (including lines, pins, stick cylinder):		
Reach Boom 6.15 m (20'2")	2300	5,070
Sticks (including lines, pins, bucket cylinder, bucket linkage):		
Reach Stick R3.2CB2 (10'6")	1440	3,170
Reach Stick R3.75CB2 (12'4")	1610	3,500
Buckets (without linkage, with tips and side cutters):		
1.76 m ³ (2.30 m ³) HD, CB Linkage	1350	3,000
1.54 m ³ (2.01 yd ³) HD, CB Linkage	1130	2,500
Quick Couplers:		
Pin Grabber QC CB with pins	530	1,170
Pin Grabber QC CB without pins	500	1,100
Dedicated QC	430	950

330 GC Hydraulic Excavator Specifications

Dimensions

All dimensions are approximate and may vary depending on bucket selection.



Boom Options

Reach Boom
6.15 m (20'2")

Stick Options

Reach Stick

R3.75CB2 (12'4")

R3.2CB2 (10'6")

1 Machine Height:

	R3.75CB2 (12'4")	10'0"	R3.2CB2 (10'6")	10'0"
Cab Height	3050 mm	10'0"	3050 mm	10'0"
FOGS Height	3190 mm	10'5"	3190 mm	10'5"
Handrail Height	3050 mm	10'0"	3050 mm	10'0"
With Boom/Stick/Bucket Installed	3700 mm	12'1"	3400 mm	11'2"
With Boom/Stick Installed	3700 mm	12'1"	3380 mm	11'1"
With Boom Installed	3050 mm	10'0"	3050 mm	10'0"

2 Machine Length:

With Boom/Stick/Bucket Installed	10 420 mm	34'2"	10 420 mm	34'2"
With Boom/Stick Installed	10 420 mm	34'2"	10 420 mm	34'2"
With Boom Installed	9230 mm	30'3"	9230 mm	30'3"

3 Upperframe Width

	2940 mm	9'7"	2940 mm	9'7"
--	---------	------	---------	------

4 Tail Swing Radius

	3130 mm	10'3"	3130 mm	10'3"
--	---------	-------	---------	-------

5 Counterweight Clearance

	1110 mm	3'7"	1110 mm	3'7"
--	---------	------	---------	------

6 Ground Clearance

	490 mm	1'7"	490 mm	1'7"
--	--------	------	--------	------

7 Length to Center of Rollers

	3990 mm	13'1"	3990 mm	13'1"
--	---------	-------	---------	-------

8 Track Length

	4860 mm	15'11"	4860 mm	15'11"
--	---------	--------	---------	--------

9 Track Gauge

	2590 mm	8'6"	2590 mm	8'6"
--	---------	------	---------	------

10 Track Width/Undercarriage Width:

800 mm (31") Shoes	3390 mm	11'1"	3390 mm	11'1"
--------------------	---------	-------	---------	-------

Bucket Type

HD

HD

Bucket Capacity

	1.56 m ³	2.04 yd ³	1.56 m ³	2.04 yd ³
--	---------------------	----------------------	---------------------	----------------------

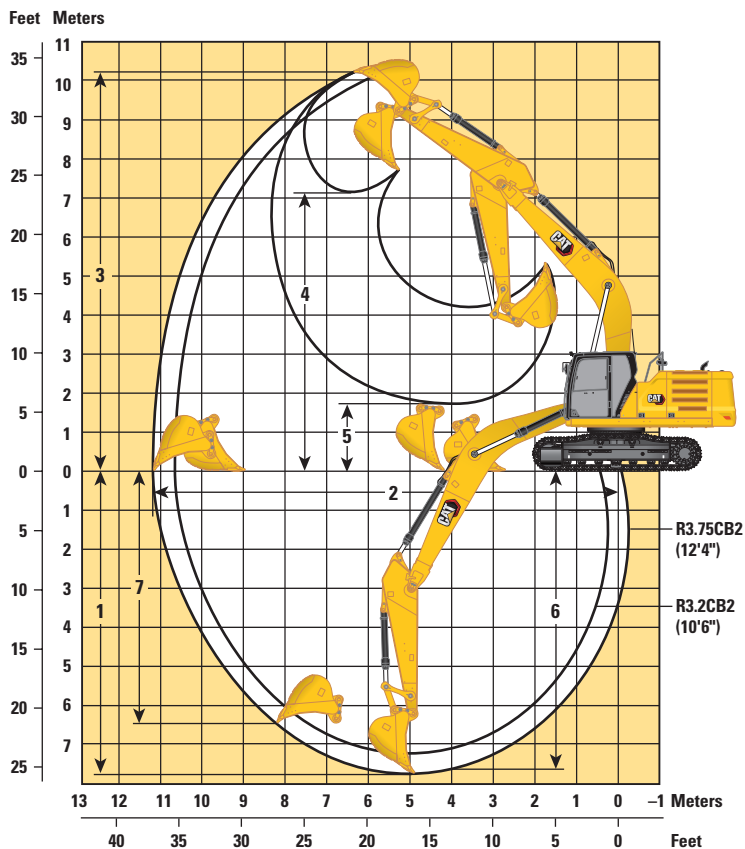
Bucket Tip Radius

	1658 mm	5'5"	1658 mm	5'5"
--	---------	------	---------	------

330 GC Hydraulic Excavator Specifications

Working Ranges and Forces

All dimensions are approximate and may vary depending on bucket selection.



Boom Options

Reach Boom
6.15 m (20'2")

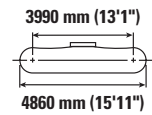
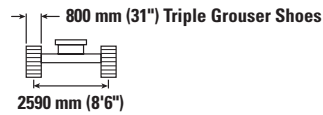
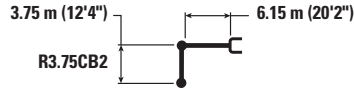
Stick Options

Reach Stick

	R3.75CB2 (12'4")		R3.2CB2 (10'6")	
1 Maximum Digging Depth	7810 mm	25'7"	7260 mm	23'10"
2 Maximum Reach at Ground Line	11 190 mm	36'8"	10 690 mm	35'1"
3 Maximum Cutting Height	10 200 mm	33'5"	10 020 mm	32'10"
4 Maximum Loading Height	7130 mm	23'4"	6940 mm	22'9"
5 Minimum Loading Height	1730 mm	5'8"	2280 mm	7'6"
6 Maximum Depth Cut for 2440 mm (8'0") Level Bottom	7670 mm	25'1"	7100 mm	23'4"
7 Maximum Vertical Wall Digging Depth	6470 mm	21'2"	6030 mm	19'9"
Bucket Digging Force (ISO)	179 kN	40,240 lbf	179 kN	40,240 lbf
Stick Digging Force (ISO)	114 kN	25,628 lbf	126 kN	28,330 lbf
Bucket Type	HD		HD	
Bucket Capacity	1.56 m ³	2.04 yd ³	1.56 m ³	2.04 yd ³
Bucket Tip Radius	1658 mm	5'5"	1658 mm	5'5"

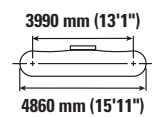
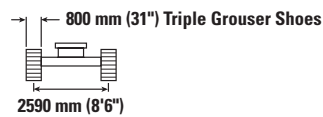
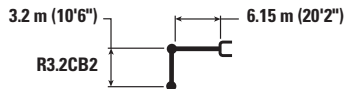
330 GC Hydraulic Excavator Specifications

Reach Boom Lift Capacities – Counterweight: 6700 kg (14,770 lb) – without Bucket



Reach Boom Configuration	1.5 m/5.0 ft		3.0 m/10.0 ft		4.5 m/15.0 ft		6.0 m/20.0 ft		7.5 m/25.0 ft		9.0 m/30.0 ft		m ft		
	kg	lb	kg	lb	kg	lb	kg	lb	kg	lb	kg	lb	kg	lb	
7.5 m 25.0 ft									*5450 *10,950	*5450 *10,950			*4350 *9,600	*4350 *9,600	7.89 25.89
6.0 m 20.0 ft									*6500 *14,250	6500 13,900			*4150 *9,200	*4150 *9,200	8.78 28.81
4.5 m 15.0 ft							*16,550 *16,550	*16,550 *16,550	*7050 *15,350	6350 13,600	*5500 *10,850	4750 10,200	*4150 *9,100	*4150 *9,100	9.34 30.64
3.0 m 10.0 ft					*11,700 *25,150	*11,700 *25,150	*9100 *19,650	8500 18,300	*7800 *16,950	6100 13,150	*6750 *13,850	4650 10,000	*4250 *9,350	4200 9,200	9.64 31.63
1.5 m 5.0 ft					*14,500 *31,200	12,200 26,300	*10,550 *22,800	8100 17,450	*8600 *18,650	5900 12,700	7000 15,000	4550 9,800	*4500 *9,900	4100 9,000	9.69 31.79
0 m 0 ft			*6150 *14,050	*6150 *14,050	*16,100 *34,850	11,750 25,250	*11,650 *25,200	7800 16,800	8950 19,300	5750 12,350	6900 14,800	4450 9,600	*4950 *10,850	4150 9,100	9.50 31.17
-1.5 m -5.0 ft	*6050 *13,450	*6050 *13,450	*9650 *21,900	*9650 *21,900	*16,550 *35,850	11,550 24,850	*12,100 *26,250	7650 16,450	8850 19,050	5650 12,150	*6150 *13,850	4450	*5650 *12,400	4400 9,650	9.06 29.72
-3.0 m -10.0 ft	*10,050 *22,500	*10,050 *22,500	*14,450 *32,800	*14,450 *32,800	*15,950 *34,500	11,550 24,850	*11,900 *25,700	7600 16,400	8850 19,050	5650 12,150			*6850 *15,250	4950 10,900	8.33 27.33
-4.5 m -15.0 ft	*15,000 *33,000	*15,000 *33,000	*19,950 *44,200	*19,950 *44,200	*14,200 *30,550	11,750 25,250	*10,600 *22,700	7750 16,650					*8200 *18,050	6100 13,550	7.21 23.65
-6.0 m -20.0 ft					*10,350 *21,550	*10,350 *21,550							*8050 *19,350	*8050 *19,350	5.46 17.91

Reach Boom Lift Capacities – Counterweight: 6700 kg (14,770 lb) – without Bucket



Reach Boom Configuration	1.5 m/5.0 ft		3.0 m/10.0 ft		4.5 m/15.0 ft		6.0 m/20.0 ft		7.5 m/25.0 ft		9.0 m/30.0 ft		m ft		
	kg	lb	kg	lb	kg	lb	kg	lb	kg	lb	kg	lb	kg	lb	
7.5 m 25.0 ft													*5150 *11,350	*5150 *11,350	7.27 24.17
6.0 m 20.0 ft									*7200 *15,300	6450 13,800			*4900 *10,750	*4900 *10,750	8.23 27.50
4.5 m 15.0 ft							*8400 *18,250	*8400 *18,250	*7600 *16,600	6300 13,600			*4850 *10,650	*4850 *10,650	8.83 29.17
3.0 m 10.0 ft					*12,950 *27,850	12,850 27,700	*9800 *21,250	8450 18,200	*8300 *18,050	6150 13,200	*5950 *12,550	4700 9,900	*5000 *11,650	4600 9,800	9.14 30.00
1.5 m 5.0 ft					*15,450 *33,350	12,150 26,200	*11,150 *24,150	8100 17,450	*9050 *19,600	5950 12,800	*6800 *12,550	4600 9,900	*5300 *11,650	4450 9,800	9.19 30.83
0 m 0 ft					*16,600 *35,950	11,800 25,400	*12,050 *26,050	7850 16,950	9050 19,450	5800 12,500			*5850 *12,800	4550 10,000	8.99 30.00
-1.5 m -5.0 ft	*6350 *14,200	*6350 *14,200	*10,000 *22,700	*10,000 *22,700	*16,600 *35,950	11,700 25,200	*12,300 *26,600	7750 16,700	8950 19,300	5750 12,400			*6750 *14,850	4850 10,700	8.53 28.33
-3.0 m -10.0 ft	*11,450 *25,650	*11,450 *25,650	*16,150 *36,750	*16,150 *36,750	*15,600 *33,700	11,800 25,350	*11,700 *25,300	7800 16,750	*8950 *19,100	5800 12,500			*8450 *18,750	5550 12,300	7.74 25.83
-4.5 m -15.0 ft			*18,050 *38,850	*18,050 *38,850	*13,250 *28,450	12,000 25,850	*9800 *20,750	7950 17,150					*8600 *18,900	7150 15,950	6.52 21.67



ISO 10567



* Indicates that the load is limited by hydraulic lifting capacity rather than tipping load. The above loads are in compliance with hydraulic excavator lift capacity standard ISO 10567:2007. They do not exceed 87% of hydraulic lifting capacity or 75% of tipping load. Weight of all lifting accessories must be deducted from the above lifting capacities. Lifting capacities are based on the machine standing on a firm, uniform supporting surface. The use of a work tool attachment point to handle/lift objects, could affect the machine lift performance.

Lift capacity stays with ±5% for all available track shoes.

Always refer to the appropriate Operation and Maintenance Manual for specific product information.

330 GC Hydraulic Excavator Specifications

Bucket Specifications and Compatibility

	Linkage	Width		Capacity		Weight		Fill	Reach Boom	
		mm	in	m ³	yd ³	kg	lb		%	R3.75 (12'4")
Pin-On (No Quick Coupler)										
General Duty Capacity	CB	600	24	0.63	0.83	724	1,597	100	●	●
	CB	750	30	0.86	1.13	811	1,788	100	●	●
	CB	900	36	1.09	1.43	908	2,002	100	●	●
	CB	1050	42	1.34	1.75	980	2,161	100	●	●
	CB	1200	48	1.58	2.07	1072	2,363	100	⊙	●
	CB	1350	54	1.83	2.40	1166	2,570	100	⊖	⊙
General Duty Capacity – WT	CB	600	24	0.63	0.83	749	1,652	100	●	●
	CB	750	30	0.86	1.13	845	1,863	100	●	●
	CB	900	36	1.09	1.43	942	2,077	100	●	●
	CB	1050	42	1.34	1.75	1022	2,253	100	●	●
	CB	1200	48	1.58	2.07	1123	2,475	100	⊙	●
	CB	1350	54	1.83	2.40	1224	2,698	100	⊖	⊙
Heavy Duty	CB	600	24	0.52	0.68	733	1,616	100	●	●
	CB	750	30	0.71	0.93	851	1,876	100	●	●
	CB	900	36	0.91	1.19	945	2,084	100	●	●
	CB	1050	42	1.12	1.46	1041	2,295	100	●	●
	CB	1200	48	1.33	1.74	1112	2,452	100	●	●
	CB	1350	54	1.54	2.02	1212	2,672	100	⊙	●
	CB	1500	60	1.76	2.30	1306	2,879	100	⊖	⊙
	CB	1650	66	1.97	2.58	1383	3,048	100	○	⊖
Heavy Duty Power	CB	1050	42	1.12	1.47	1070	2,360	100	●	●
	CB	1200	48	1.33	1.73	1148	2,532	100	●	●
	CB	1350	54	1.53	2.01	1253	2,762	100	⊙	●
Severe Duty	CB	600	24	0.52	0.68	755	1,665	90	●	●
	CB	750	30	0.71	0.93	915	2,017	90	●	●
	CB	900	36	0.91	1.19	1000	2,204	90	●	●
	CB	1050	42	1.12	1.46	1099	2,424	90	●	●
	CB	1200	48	1.33	1.74	1177	2,596	90	●	●
Maximum load pin-on (payload + bucket)								kg	4140	4580
								lb	9,127	10,097

The above loads are in compliance with hydraulic excavator standard EN474-5:2006 + A3:2013, they do not exceed 87% of hydraulic lifting capacity or 75% of tipping capacity with front linkage fully extended at ground line with bucket curled.

Capacity based on ISO 7451:2007.

Bucket weight with General Duty tips.

Maximum Material Density:

- 2100 kg/m³ (3,500 lb/yd³)
- ⊙ 1800 kg/m³ (3,000 lb/yd³)
- ⊖ 1500 kg/m³ (2,500 lb/yd³)
- 1200 kg/m³ (2,000 lb/yd³)

Caterpillar recommends using appropriate work tools to maximize the value customers receive from our products. Use of work tools, including buckets, which are outside of Caterpillar's recommendations or specifications for weight, dimensions, flows, pressures, etc. may result in less-than-optimal performance, including but not limited to reductions in production, stability, reliability, and component durability. Improper use of a work tool resulting in sweeping, prying, twisting and/or catching of heavy loads will reduce the life of the boom and stick.

330 GC Hydraulic Excavator Specifications

Bucket Specifications and Compatibility

	Linkage	Width		Capacity		Weight		Fill	Reach Boom	
		mm	in	m ³	yd ³	kg	lb	%	R3.75 (12'4")	R3.2 (10'6")
With Pin Grabber Quick Coupler										
General Duty Capacity	CB	600	24	0.63	0.83	724	1,597	100	●	●
	CB	750	30	0.86	1.13	811	1,788	100	●	●
	CB	900	36	1.09	1.43	908	2,002	100	●	●
	CB	1050	42	1.34	1.75	980	2,161	100	●	●
	CB	1200	48	1.58	2.07	1072	2,363	100	⊙	●
	CB	1350	54	1.83	2.40	1166	2,570	100	⊖	⊙
General Duty Capacity – WT	CB	600	24	0.63	0.83	749	1,652	100	●	●
	CB	750	30	0.86	1.13	845	1,863	100	●	●
	CB	900	36	1.09	1.43	942	2,077	100	●	●
	CB	1050	42	1.34	1.75	1022	2,253	100	●	●
	CB	1200	48	1.58	2.07	1123	2,475	100	⊙	●
	CB	1350	54	1.83	2.40	1224	2,698	100	⊖	⊙
Heavy Duty	CB	600	24	0.52	0.68	733	1,616	100	●	●
	CB	750	30	0.71	0.93	851	1,876	100	●	●
	CB	900	36	0.91	1.19	945	2,084	100	●	●
	CB	1050	42	1.12	1.46	1041	2,295	100	●	●
	CB	1200	48	1.33	1.74	1112	2,452	100	●	●
	CB	1350	54	1.54	2.02	1212	2,672	100	⊙	●
	CB	1500	60	1.76	2.30	1306	2,879	100	⊖	⊙
	CB	1650	66	1.97	2.58	1383	3,048	100	○	⊖
Heavy Duty Power	CB	1050	42	1.12	1.47	1070	2,360	100	●	●
	CB	1200	48	1.33	1.73	1148	2,532	100	●	●
	CB	1350	54	1.53	2.01	1253	2,762	100	⊙	●
Heavy Duty – PGP	CB	750	30	0.70	0.91	879	1,938	100	●	●
	CB	1050	42	1.08	1.42	1110	2,448	100	●	●
	CB	1200	48	1.28	1.68	1191	2,626	100	●	●
	CB	1350	54	1.49	1.94	1299	2,864	100	⊙	●
	CB	1500	60	1.69	2.21	1406	3,099	100	⊖	⊙
Severe Duty	CB	600	24	0.52	0.68	755	1,665	90	●	●
	CB	750	30	0.71	0.93	915	2,017	90	●	●
	CB	900	36	0.91	1.19	1000	2,204	90	●	●
	CB	1050	42	1.12	1.46	1099	2,424	90	●	●
	CB	1200	48	1.33	1.74	1177	2,596	90	●	●
Severe Duty – PGP	CB	600	24	0.51	0.66	832	1,835	90	●	●
	CB	900	36	0.88	1.16	1062	2,341	90	●	●
	CB	1050	42	1.08	1.42	1170	2,580	90	●	●
	CB	1200	48	1.28	1.68	1257	2,772	90	●	●
Maximum load with coupler (payload + bucket)								kg	3614	4054
								lb	7,967	8,937

The above loads are in compliance with hydraulic excavator standard EN474-5:2006 + A3:2013, they do not exceed 87% of hydraulic lifting capacity or 75% of tipping capacity with front linkage fully extended at ground line with bucket curled. Capacity based on ISO 7451:2007.

Bucket weight with General Duty tips.

Maximum Material Density:

- 2100 kg/m³ (3,500 lb/yd³)
- ⊙ 1800 kg/m³ (3,000 lb/yd³)
- ⊖ 1500 kg/m³ (2,500 lb/yd³)
- 1200 kg/m³ (2,000 lb/yd³)

Caterpillar recommends using appropriate work tools to maximize the value customers receive from our products. Use of work tools, including buckets, which are outside of Caterpillar's recommendations or specifications for weight, dimensions, flows, pressures, etc. may result in less-than-optimal performance, including but not limited to reductions in production, stability, reliability, and component durability. Improper use of a work tool resulting in sweeping, prying, twisting and/or catching of heavy loads will reduce the life of the boom and stick.

330 GC Hydraulic Excavator Specifications

Attachments Offering Guide

Not all Attachments are available in all regions. Consult your Cat dealer for configurations available in your region.

Match
 * Working range front only
 No Match
 1800 kg/m³ (3,000 lb/yd³)
 1200 kg/m³ (2,000 lb/yd³)

PIN-ON ATTACHMENTS

Boom Type		Reach	
		3.75 m (12'4")	3.20 m (10'6")
Hydraulic Hammers	H120 S	✓	✓
	H130 GC	✓	✓
	H130 GC S	✓	✓
	H130 S	✓	✓
	H140 GC	✓	✓
	H140 GC S	✓	✓
	H140 S	✓	✓
	H160 GC	✓	✓
	H160 GC S	✓	✓
	Multi-Processors	MP324 Concrete Cutter Jaw	✓
MP324 Demolition Jaw		✓	✓
MP324 Pulverizer Jaw		✓	✓
MP324 Shear Jaw		✓	✓
MP324 Tank Shear Jaw		✓	✓
MP324 Universal Jaw		✓	✓
MP332 Concrete Cutter Jaw		✓	✓
MP332 Demolition Jaw		✓*	✓
MP332 Pulverizer Jaw		✓*	✓
MP332 Shear Jaw		✓	✓
MP332 Tank Shear Jaw			✓*
MP332 Universal Jaw	✓*	✓	
Demolition and Sorting Grapples	G324	✓	✓
	G324 WH-1500	✓	✓
	G324 WH-1800	✓	✓
	G324 WH-2000	✓	✓
	G332	✓	✓
Mobile Scrap and Demolition Shears	S3025 Flat Top		✓
	S3035 Flat Top		✓
Pulverizers	P224 Secondary Pulverizer	✓	✓
	P324 Primary Pulverizer	✓	✓
	P332 Primary Pulverizer	✓*	✓
Compactors (Vibratory Plate)	CVP110	✓	✓
Orange Peel Grapples	GSH425-750	●	●
	GSH425-950	●	●
	GSH425-1150	●	●
	GSH440-1150	○	●
	GSH440-1550		○
	GSH525-750	●	●
	GSH525-950	●	●
	GSH525-1150	○	●
Clamshell Grapples	CTV15-1900		○
	CTV20-1500	○	○

(continued on next page)

330 GC Hydraulic Excavator Specifications

Attachments Offering Guide *(continued)*

Not all Attachments are available in all regions. Consult your Cat dealer for configurations available in your region.

Match
 * Working range front only
 † Allowed usage on machine less than 50%
 No Match

CAT PIN GRABBER ATTACHMENTS

Boom Type	Stick Length	Reach	
		R3.75 (12'4")	R3.2 (10'6")
Hydraulic Hammers	H120 S	✓	✓
	H130 GC	✓	✓
	H130 GC S	✓	✓
	H130 S	✓	✓
	H140 GC	✓	✓
	H140 GC S		✓
	H140 S	✓	✓
	H160 GC		✓
	H160 GC S	✓	✓
Multi-Processors	MP324 Concrete Cutter Jaw	✓	✓
	MP324 Demolition Jaw	✓	✓
	MP324 Pulverizer Jaw	✓	✓
	MP324 Shear Jaw	✓	✓
	MP324 Tank Shear Jaw	✓	✓
	MP324 Universal Jaw	✓	✓
	MP332 Concrete Cutter Jaw		✓*
	MP332 Shear Jaw		✓*
Demolition and Sorting Grapples	G324	✓	✓†
	G324 WH-1500	✓	✓†
	G324 WH-1800		✓†
	G332		✓†
Mobile Scrap and Demolition Shears	S3025 Flat Top	✓	✓
Compactors (Vibratory Plate)	CVP110		✓

BOOM-MOUNT ATTACHMENTS

Boom Type		Reach
Mobile Scrap and Demolition Shears	S2070	✓
	S3050 Flat Top	✓

330 GC Hydraulic Excavator Specifications

Thumb Specifications

Not all Attachments are available in all regions. Consult your Cat dealer for configurations available in your region.

Match

No Match

Bucket Type	Tooth Quantity	Width		Pro Plus		Pro		Still Link		Utility	
		mm	in	Pin-On	Cat Pin Grabber	Pin-On	Cat Pin Grabber	Pin-On	Cat Pin Grabber	Pin-On	Cat Pin Grabber
General Duty	5	902	36	✓	✓	✓	✓	✓	✓	✓	✓
	5	1056	42	✓	✓	✓	✓	✓	✓	✓	✓
	6	1208	48	✓	✓	✓	✓	✓	✓	✓	✓
	7	1350	54	✓	✓	✓	✓	✓	✓	✓	✓
Heavy Duty	4	902	36	✓	✓	✓	✓	✓	✓	✓	✓
	5	1056	42	✓	✓	✓	✓	✓	✓	✓	✓
	5	1208	48	✓	✓	✓	✓	✓	✓	✓	✓
	6	1350	54	✓	✓	✓	✓	✓	✓	✓	✓
	7	1500	60	✓	✓	✓	✓	✓	✓	✓	✓
	7	1650	66	✓	✓	✓	✓	✓	✓	✓	✓
Heavy Duty Power	5	1080	42		✓			✓	✓	✓	✓
	5	1232	48	✓	✓	✓	✓	✓	✓	✓	✓
	6	1384	54	✓	✓			✓	✓	✓	✓
Severe Duty	4	902	36	✓	✓	✓	✓	✓	✓	✓	✓
	5	1056	42	✓	✓	✓	✓	✓	✓	✓	✓
	5	1208	48	✓	✓	✓	✓	✓	✓	✓	✓
Pin Grabber Performance (HD)	5	1208	48		✓		✓			✓	✓
	6	1350	54		✓		✓			✓	✓
	7	1500	60							✓	✓
Pin Grabber Performance (SD)	4	902	36							✓	✓
	5	1056	42		✓					✓	✓

330 GC Standard and Optional Equipment

Standard and Optional Equipment

Equipment may vary. Consult your Cat dealer for details.

	Standard	Optional		Standard	Optional
CAB			ENGINE		
ROPS	✓		Cat® C7.1 single turbo diesel engine	✓	
High-resolution 203 mm (8") LCD touchscreen monitor	✓		Two selectable modes: Power, Smart	✓	
Auto bi-level air conditioner	✓		Automatic engine speed control	✓	
Jog dial and shortcut keys for monitor control	✓		Auto engine idle-shutdown	✓	
Keyless push-to-start engine control	✓		4500 m (14,760 ft) altitude capability with engine power derate above 3000 m (9,840 ft)	✓	
Height-adjustable console	✓		52° C (125° F) high-ambient cooling capability without de-rate	✓	
Fixed left-side console	✓		-18° C (0° F) cold start capability	✓	
Mechanical-suspension seat	✓		-32° C (-25° F) cold start capability		✓
51 mm (2") seat belt	✓		2 × 115 amp dual alternator	✓	
Bluetooth® integrated radio with USB/Aux ports	✓		Sealed double element air filter with integrated precleaner	✓	
12V DC outlets	✓		Two-stage fuel filtration with water separator and indicator	✓	
Document storage	✓		Electric fuel priming pump	✓	
Cup and bottle holders	✓		Electric cooling fans with auto-reverse function	✓	
Openable two-piece front window	✓		HYDRAULIC SYSTEM		
Rear window emergency exit	✓		Electronic main control valve	✓	
Upper radial wiper with washer	✓		Electric boom regeneration circuit	✓	
Openable steel hatch	✓		Stick regeneration circuit	✓	
LED dome light	✓		Automatic hydraulic oil warm up	✓	
Roller front sunscreen	✓		Automatic two-speed travel	✓	
Roller rear sunscreen		✓	Boom and stick drift reduction valve	✓	
Washable floor mat	✓		Boom lowering check valve		✓
Beacon ready	✓		Stick lowering check valve		✓
CAT TECHNOLOGY			High performance hydraulic return filter	✓	
Cat Product Link™	✓		Final drive with bio hydraulic oil capable travel motor	✓	
Remote Flash	✓		Fine swing control	✓	
Remote Troubleshoot	✓		Tool Control (two pump, one/two way high-pressure flow)		✓
Auto hammer stop	✓		Common Quick Coupler Circuit for Cat Pin Grabber and CW Dedicated		✓
			Electronic Pattern Changer (requires activation)	✓	

(continued on next page)

Standard and Optional Equipment *(continued)*

Standard and optional equipment may vary. Consult your Cat dealer for details.

	Standard	Optional		Standard	Optional
BOOMS, STICKS AND LINKAGES			SERVICE AND MAINTENANCE		
6.15 m (20'2") Reach boom	✓		Grouped location of engine oil and fuel filters	✓	
3.2 m (10'6") Reach stick		✓	Ground-level second dipstick for engine oil	✓	
3.75 m (12'4") Reach stick		✓	Side entry to service platform	✓	
Bucket Linkage, CB2 family with lifting eye	✓		Scheduled Oil Sampling (S·O·S SM) ports	✓	
UNDERCARRIAGE AND STRUCTURES			Radiator screen		✓
Segmented track guiding guards	✓		Integrated vehicle health management system		✓
Bottom guards	✓		SAFETY AND SECURITY		
Swivel guard		✓	Rearview camera	✓	
Travel motor guards	✓		Right-hand-sideview camera	✓	
Grease lubricated track	✓		Cat PL161 Attachment Locator		✓
Base frame with HD rollers	✓		Secure start with PIN code	✓	
Tie-down points on base frame	✓		Caterpillar One Key security system	✓	
6700 kg (14,770 lb) counterweight	✓		Lockable external tool/storage box	✓	
800 mm (31") triple grouser track shoes	✓		Lockable door, fuel, and hydraulic tank locks	✓	
ELECTRICAL SYSTEM			Lockable fuel drain compartment	✓	
Maintenance-free 1,000 CCA batteries (×2)	✓		Service platform with anti-skid plate and recessed bolts	✓	
Programmable time-delay LED working lights	✓		RH handrail and hand hold (ISO 2867:2011 Compliant)	✓	
Centralized electrical disconnect switch	✓		Cab mirror for RH track edge	✓	
LED chassis light, LH and RH boom lights, cab lights	✓		Signaling/warning horn	✓	
			Swing alarm		✓
			Ground-level secondary engine shutoff switch in cab	✓	
			Hydraulic lock out lever that neutralizes all controls	✓	
			Travel alarm	✓	
			Inspection lighting		✓

Dealer Installed Kits and Attachments

Attachments may vary. Consult your Cat dealer for details.

CAB

- LH/RH electrical pedal (two-way) for tool control
- Dual exit rear window kit
- Radial lower wiper for two piece (70/30) windshield, with washer
- Rain protector plus cab light cover
- Polycarbonate roof hatch
- P5A laminated glass front windshield and roof hatch (for EU demolition regulation)

SAFETY AND SECURITY

- Bluetooth receiver
- Dual exit rear window
- 75 mm (3") retractable seat belt

GUARDS

- Side rubber bumper guard
- Falling object guard system (not compatible with cab light cover, rain protector)
- Mesh guard full front (not compatible with cab light cover, rain protector)
- Mesh guard lower half front
- Full protecting vandalism guard (not compatible with cab light cover, rain protector)
- Vandalism guard

ELECTRICAL

- Jump start wiring

SERVICE AND MAINTENANCE

- Grease gun holder

The following information applies to the machine at the time of final manufacture as configured for sale in the regions covered in this document. The content of this declaration is valid as of the date issued; however, content related to machine features and specifications are subject to change without notice. For additional information, please see the machine's Operation and Maintenance Manual.

For more information on sustainability in action and our progress, please visit <https://www.caterpillar.com/en/company/sustainability>.

Engine

- The Cat® C7.1 engine meets U.S. EPA Tier 4 Final, EU Stage V, Korea Tier 5, and Japan 2014 emission standards.
- Cat diesel engines are required to use ULSD (ultra-low sulfur diesel fuel with 15 ppm of sulfur or less) or ULSD blended with the following lower-carbon intensity fuels up to:
 - ✓ 20% biodiesel FAME (fatty acid methyl ester)*
 - ✓ 100% renewable diesel, HVO (hydrogenated vegetable oil) and GTL (gas-to-liquid) fuels

Refer to guidelines for successful application. Please consult your Cat dealer or “Caterpillar Machine Fluids Recommendations” (SEBU6250) for details.

**Engines with no aftertreatment devices can use higher blends, up to 100% biodiesel.*

Air Conditioning System

- The air conditioning system on this machine contains the fluorinated greenhouse gas refrigerant R134a (Global Warming Potential = 1430). The system contains 0.85 kg (1.9 lb) of refrigerant which has a CO₂ equivalent of 1.216 metric tonnes (1.340 tons).

Paint

- Based on best available knowledge, the maximum allowable concentration, measured in parts per million (PPM), of the following heavy metals in paint are:
 - Barium < 0.01%
 - Cadmium < 0.01%
 - Chromium < 0.01%
 - Lead < 0.01%

Sound Performance

ISO 6395:2008 (external) – 103 dB(A)

ISO 6396:2008 (inside cab) – 70 dB(A)

- When properly installed and maintained, the cab offered by Caterpillar, when tested with doors and windows closed according to ANSI/SAE J1166 OCT98, meets OSHA and MSHA requirements for operator sound exposure limits in effect at time of manufacture.
- Hearing protection may be needed when operating with an open operator station and cab (when not properly maintained or doors/windows open) for extended periods or in a noisy environment.

Oils and Fluids

- Caterpillar factory fills with ethylene glycol coolants. Cat Diesel Engine Antifreeze/Coolant (DEAC) and Cat Extended Life Coolant (ELC) can be recycled. Consult your Cat dealer for more information.
- Cat Bio HYDO™ Advanced is an EU Ecolabel approved biodegradable hydraulic oil.
- Additional fluids are likely to be present, please consult the Operations and Maintenance Manual or the Application and Installation guide for complete fluid recommendations and maintenance intervals.

Features and Technology

- The following features and technology may contribute to fuel savings and/or carbon reduction. Features may vary. Consult your Cat dealer for details.
 - Advanced hydraulic systems balance power and efficiency
 - Smart mode matches machine power to digging requirements automatically
 - Cut maintenance costs up to 25% with extended service intervals
 - Programmable high-efficiency cooling fans run only when needed
 - New hydraulic oil filter provides longer life with a 3,000-hour replacement interval

Recycling

- The materials included in machines are categorized as below with approximate weight percentage. Because of variations of product configurations, the following values in the table may vary.

Material Type	Weight Percentage
Steel	86.85%
Iron	4.63%
Nonferrous Metal	1.55%
Mixed Metal	0.07%
Mixed-Metal and Nonmetal	0.63%
Plastic	1.79%
Rubber	0.16%
Mixed Nonmetallic	0.23%
Fluid	3.12%
Other	0.96%
Uncategorized	0.00%
Total	100%

- A machine with higher recyclability rate will ensure more efficient usage of valuable natural resources and enhance End-of-Life value of the product. According to ISO 16714 (Earthmoving machinery – Recyclability and recoverability – Terminology and calculation method), recyclability rate is defined as percentage by mass (mass fraction in percent) of the new machine potentially able to be recycled, reused or both.

All parts in the bill of material are first evaluated by component type based on a list of components defined by the ISO 16714 and Japan CEMA (Construction Equipment Manufacturers Association) standards. Remaining parts are further evaluated for recyclability based on material type.

Because of variations of product configurations, the following value in the table may vary.

Recyclability – 97%

For more complete information on Cat products, dealer services, and industry solutions, visit us on the web at www.cat.com

© 2022 Caterpillar
All rights reserved

Materials and specifications are subject to change without notice. Featured machines in photos may include additional equipment. See your Cat dealer for available options.

CAT, CATERPILLAR, LET'S DO THE WORK, their respective logos, "Caterpillar Corporate Yellow," the "Power Edge" and Cat "Modern Hex" trade dress as well as corporate and product identity used herein, are trademarks of Caterpillar and may not be used without permission.

AEXJ0076-04 (09-2022)
Replaces AEXJ0076-03
Build Number: 07E
(N Am)

