



Cat[®] 307.5

MINI HYDRAULIC EXCAVATOR

FEATURES:

The Cat[®] 307.5 Mini Excavator delivers maximum power and performance in a mini size to help you work in a wide range of applications.

ALL DAY COMFORT

- A sealed and pressurized cab is equipped with an improved air conditioning system, adjustable wrist rests and a suspension seat to help keep you working comfortably all day long.

EASY TO OPERATE

- Controls are easy to use and the intuitive Next Generation Monitor provides customizable machine operator preferences and easy to read machine information.

STICK STEER TRAVEL MODE

- Moving around the job site is even easier with Cat Stick Steer. Easily switch from traditional travel controls with levers and pedals to joystick controls with a push of a button. The benefit of less effort and improved control is in your hands!

BIG PERFORMANCE IN A MINI DESIGN

- Increased lifting, swinging, travel and multi-functioning performance helps you get the job done more efficiently, and blade float allows for easy grading.

SAFETY ON THE JOB SITE

- Your safety is our top priority. The Cat Mini Excavator is designed to help keep you safe on the job. A back-up camera, courtesy work lights and a fluorescent retractable seat belt with optional seat belt reminder system are just a few of the safety features we've built into the machine.

SIMPLE SERVICE FOR LESS DOWNTIME

- Maintenance is quick and easy on the Cat Mini Excavator. Routine check points are easy to access at ground level with grouped service points and robust service panels.

LOWER OPERATING COSTS

- Equipped with features such as auto idle, auto engine shutdown, and efficient hydraulics with a variable displacement pump, the Cat Mini Excavator was designed with reducing your operating costs in mind.

UNMATCHED DEALER SUPPORT

- Your Cat dealer is here to help you reach your business goals. From providing equipment solutions to operator training to service needs and beyond, your Cat dealer is ready to help.



307.5 Mini Hydraulic Excavator

CAT TECHNOLOGY

EASE OF USE FOR CAT MINI EXCAVATORS

Ease of Use assists operators in controlling the machine to simplify operation, improve accuracy and enhance overall productivity on the job site. Ease of Use is available equipped on your mini excavator from the factory or as an upgrade kit post purchase.

Operators can choose from two software packages, Indicate or E-Fence to suit their application needs.

INDICATE

Ease of Use Indicate is an entry-level grade system providing visual and audible indicators to where the bucket is versus a target grade to cut and fill to exact specifications the first time without overcutting.

- Ideal for digging footings, septic systems, foundations, slope work and similar applications with level sites.
- Machine integrated depth measurement system from selected bench
- Operators can target a grade relative to the machine chassis (machine reference) or relative to gravity (earth reference).
- Operator can program a flat grade or a slope.
- Does not include the ability to automatically adjust stick, boom or bucket position. Cat Grade is required for autos functionality.
- Includes Swing Assist ideal for truck loading and trenching applications, and Bucket Assist ideal for sloping, leveling, fine grading and trenching applications.

E-FENCE

Ease of Use E-Fence automatically constrains machine motion within operator pre-set boundaries for Ceiling, Floor, Wall and Swing to avoid structures overhead, underground, in front or to the left or right of the machine.

- Ideal for applications near high-traffic, protecting structures on the job site, avoiding fiber optic cables and other underground utilities.
- Limits boom, stick, bucket, house and boom swing from operating beyond set boundaries.
- Includes Swing Assist ideal for truck loading and trenching applications, and Bucket Assist ideal for sloping, leveling, fine grading and trenching applications.

CAT GRADE

Cat Grade is available as an aftermarket-installed automatics system that is easy to learn and use. Cat Grade Advanced 2D and 3D give you the ability to create, manage and grade simple to complex designs with accuracy ensuring cuts and fills are made to exact specifications. Cat Grade reduces costs, improves accuracy, provides improved operator efficiency and enhances safety.

GRADE ADVANCED 2D

Cat Grade Advanced 2D allows the operator to set parameters for digging and leveling operations, including cross slope and work site main fall. Grade Advanced 2D also lets the operator input, edit and work to basic 2D design plans from the operator's seat.

- Ideal for commercial site pad designs, trenches, commercial septic systems and similar applications.
- Provides bucket position in real time, and the operator can select from a number of different viewing angles.

GRADE 3D

Cat Grade 3D for excavators adds deeper design capabilities, plus, Global navigation satellite system (GNSS) receivers and a correctional data source to achieve Real Time Kinematic (RTK) positioning guidance for more complex planes, slopes, contours and curves.

- Provides operator with bucket positioning in relation to preloaded 3D design files or background maps.
- Helps to coordinate multiple machine operations while maintaining accurate digging parameters across large job sites.

Availability varies by region, please contact our Cat dealer to discuss the best technology options for you and your application.

Specifications

Engine

Engine Model	Cat C2.4 Turbo	
--------------	----------------	--

Rated Net Power

ISO 9249, 80/1269/EEC	40.9 kW	54.8 hp
-----------------------	---------	---------

Engine Power

ISO 14396	43.2 kW	57.9 hp
-----------	---------	---------

Bore	87 mm	3.4 in
------	-------	--------

Stroke	102.4 mm	4 in
--------	----------	------

Displacement	2.43 L	148 in ³
--------------	--------	---------------------

- Meets U.S. EPA Tier 4 Final and EU Stage V emissions standards.
- Advertised power is tested per the specified standard in effect at the time of manufacture.
- Net power advertised is the power available at the flywheel when the engine is at the rated speed of 2,400 rpm and the engine is installed with the factory configured fan, air intake system, exhaust system and alternator with a minimum alternator load.

Weights

Minimum Operating Weight with Cab*	7505 kg	16,549 lb
------------------------------------	---------	-----------

Maximum Operating Weight with Cab**	8120 kg	17,905 lb
-------------------------------------	---------	-----------

*Minimum Weight is based on steel tracks, no counterweight, operator, full fuel tank, standard stick, blade and no bucket.

**Maximum Weight is based on steel tracks with rubber pads, counterweight, operator, full fuel tank, long stick, blade and no bucket.

Weight Increase from Minimum Configuration

Counterweight	250 kg	552 lb
---------------	--------	--------

Long Stick	82 kg	181 lb
------------	-------	--------

Steel Tracks with Pads	285 kg	628 lb
------------------------	--------	--------

Travel System

Travel Speed – High	5.0 km/h	3.1 mph
---------------------	----------	---------

Travel Speed – Low	3.1 km/h	1.9 mph
--------------------	----------	---------

Maximum Traction Force – High Speed	26.1 kN	5,856 lb
-------------------------------------	---------	----------

Maximum Traction Force – Low Speed	62.4 kN	14,035 lb
------------------------------------	---------	-----------

Ground Pressure – Minimum Weight	34.8 kPa	5.1 psi
----------------------------------	----------	---------

Ground Pressure – Maximum Weight	37.7 kPa	5.5 psi
----------------------------------	----------	---------

Gradeability (maximum)	30 degrees	
------------------------	------------	--

Service Refill Capacities

Cooling System	10 L	2.6 gal
----------------	------	---------

Engine Oil	9.5 L	2.5 gal
------------	-------	---------

Fuel Tank	145 L	38 gal
-----------	-------	--------

Hydraulic Tank	53 L	14 gal
----------------	------	--------

Hydraulic System	110 L	29 gal
------------------	-------	--------

Hydraulic System

Load Sensing Hydraulics with Variable Displacement Piston Pump

Pump Flow @ 2,400 rpm	167 L/min	44 gal/min
-----------------------	-----------	------------

Operating Pressure – Equipment	285 bar	4,134 psi
--------------------------------	---------	-----------

Operating Pressure – Travel	285 bar	4,134 psi
-----------------------------	---------	-----------

Operating Pressure – Swing	250 bar	3,626 psi
----------------------------	---------	-----------

Maximum Auxiliary Circuit – Primary

Flow at Pump*	131 L/min	35 gal/min
---------------	-----------	------------

Pressure at Pump*	285 bar	4,134 psi
-------------------	---------	-----------

Maximum Auxiliary Circuit – Secondary

Flow at Pump*	33 L/min	9 gal/min
---------------	----------	-----------

Pressure at Pump*	285 bar	4,134 psi
-------------------	---------	-----------

Digging Force – Stick (standard)	37.8 kN	8,504 lb
----------------------------------	---------	----------

Digging Force – Stick (long)	33.7 kN	7,579 lb
------------------------------	---------	----------

Digging Force – Bucket	54.6 kN	12,272 lb
------------------------	---------	-----------

*Flow and pressure are not combinable. Under load, as flow rises pressure goes down.

Swing System

Machine Swing Speed	10 rpm
---------------------	--------

Blade

Width	2280 mm	90 in
-------	---------	-------

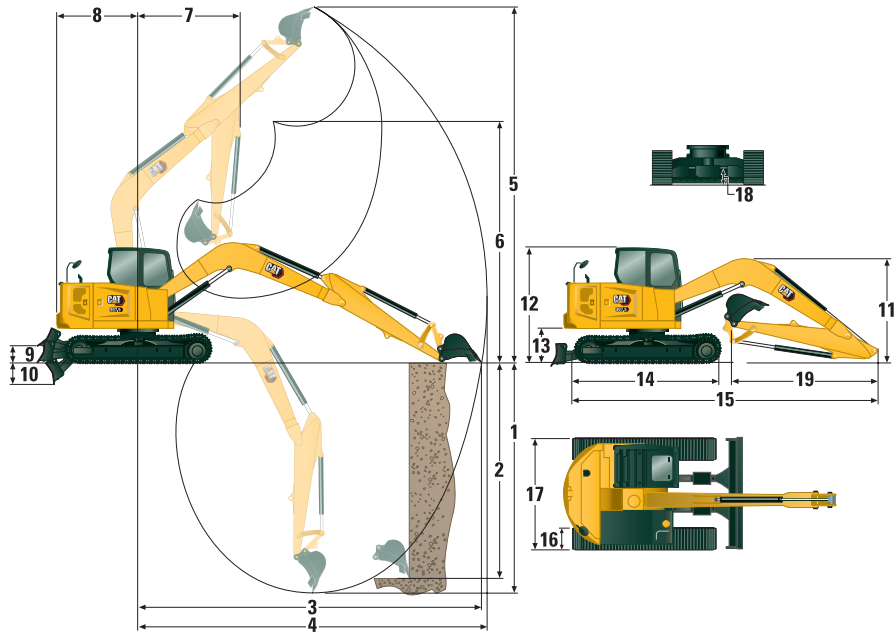
Height	431 mm	17 in
--------	--------	-------

Certification – Cab

Roll Over Protective Structure (ROPS)	ISO 12117-2:2008
---------------------------------------	------------------

Top Guard	ISO 10262:1998 (Level I)
-----------	--------------------------

307.5 Mini Hydraulic Excavator



Dimensions

	Standard Stick	Long Stick
1 Dig Depth	4100 mm (161.4 in)	4642 mm (182.8 in)
2 Vertical Wall	3597 mm (141.6 in)	4113 mm (161.9 in)
3 Maximum Reach at Ground Level	6151 mm (242.1 in)	6670 mm (262.6 in)
4 Maximum Reach	6297 mm (247.9 in)	6805 mm (267.9 in)
5 Maximum Dig Height	7348 mm (289.3 in)	7765 mm (305.7 in)
6 Maximum Dump Clearance	5300 mm (208.6 in)	5717 mm (225.1 in)
7 Boom in Reach	1681 mm (66.2 in)	2250 mm (88.6 in)
8 Tail Swing		
with Counterweight	1930 mm (76.0 in)	1930 mm (76.0 in)
without Counterweight	1800 mm (70.9 in)	1800 mm (70.9 in)
9 Maximum Blade Height	370 mm (14.6 in)	370 mm (14.6 in)
10 Maximum Blade Depth	407 mm (16.0 in)	407 mm (16.0 in)
11 Boom Height in Shipping Position		
Boom Transport – No Tools*	2570 mm (101.2 in)	2550 mm (100.4 in)
Boom Working – With Tools**	2730 mm (107.5 in)	3150 mm (124.0 in)
12 Cab Height	2541 mm (100.0 in)	2541 mm (100.0 in)
13 Swing Bearing Height	756 mm (29.7 in)	756 mm (29.7 in)
14 Overall Undercarriage Length	2760 mm (108.7 in)	2760 mm (108.7 in)
15 Overall Shipping Length		
with Counterweight	6230 mm (245.3 in)	6250 mm (246.1 in)
without Counterweight	6100 mm (240.2 in)	6120 mm (240.9 in)
16 Track Belt/Shoe Width	450 mm (17.7 in)	450 mm (17.7 in)
17 Overall Track Width	2200 mm (86.6 in)	2200 mm (86.6 in)
Width over Upper House	2250 mm (88.6 in)	2250 mm (88.6 in)
18 Ground Clearance	370 mm (14.6 in)	370 mm (14.6 in)
19 Stick Length	1665 mm (65.6 in)	2208 mm (86.9 in)

*Boom Height when stick is pinned in transport position with no attachments.

**Boom Height when stick is pinned in working position with attachments.

Standard Stick offers only one pin position.

307.5 Mini Hydraulic Excavator

Lift Capacities – Minimum Configuration

Lift Point Height			3 m (9.8 ft)			4.5 m (14.8 ft)			Lift Point Radius (Maximum)			
			Over Front		Over Side	Over Front		Over Side	Over Front		Over Side	m (ft)
			Blade Down	Blade Up		Blade Down	Blade Up		Blade Down	Blade Up		
4.5 m (14.8 ft)	Standard Stick	kg (lb)	*2350 *(5,182)	*2350 *(5,182)	*2350 *(5,182)				*1235 *(2,723)	*1235 *(2,723)	*1235 *(2,723)	4.22 (13.8)
	Long Stick	kg (lb)	*1955 *(4,311)	*1955 *(4,311)	*1955 *(4,311)	*1740 *(3,837)	*1740 *(3,837)	*1740 *(3,837)	*1180 *(2,602)	*1180 *(2,602)	*1180 *(2,602)	4.84 (15.9)
3 m (9.8 ft)	Standard Stick	kg (lb)	*4311 *(6,229)	*2825 *(6,229)	*2825 *(6,229)	*2180 *(4,807)	1650 (3,638)	1510 (3,330)	*1155 *(2,547)	*1155 *(2,547)	*1155 *(2,547)	5.00 (16.4)
	Long Stick	kg (lb)	*2430 *(5,358)	*2430 *(5,358)	*2430 *(5,358)	*1965 *(4,333)	1665 (3,671)	1520 (3,352)	*1120 *(2,470)	*1120 *(2,470)	*1120 *(2,470)	5.54 (18.2)
1.5 m (4.9 ft)	Standard Stick	kg (lb)	*3525 *(7,773)	2915 (6,428)	2585 (5,700)	*2355 *(5,193)	1565 (3,451)	1425 (3,142)	*1205 *(2,657)	*1205 *(2,657)	*1205 *(2,657)	5.27 (17.3)
	Long Stick	kg (lb)	*3225 *(7,111)	*3225 *(7,111)	2625 (5,788)	*2205 *(4,862)	1555 (3,429)	1410 (3,109)	*1165 *(2,569)	*1165 *(2,569)	940 (2,073)	5.78 (19.0)
0 m (0 ft)	Standard Stick	kg (lb)	*3645 *(8,037)	2735 (6,031)	2415 (5,325)	*2375 *(5,237)	1490 (3,285)	1350 (2,977)	*1395 *(3,076)	*1395 *(3,076)	1135 (2,503)	5.10 (16.7)
	Long Stick	kg (lb)	*3600 *(7,938)	2695 (5,942)	2375 (5,237)	*2335 *(5,149)	1455 (3,208)	1315 (2,900)	*1315 *(2,900)	1040 (2,293)	945 (2,084)	5.62 (18.4)

Minimum Weight includes steel tracks, no counterweight, operator, full fuel tank, blade and no bucket.

Lift Capacities – Maximum Configuration

Lift Point Height			3 m (9.8 ft)			4.5 m (14.8 ft)			Lift Point Radius (Maximum)			
			Over Front		Over Side	Over Front		Over Side	Over Front		Over Side	m (ft)
			Blade Down	Blade Up		Blade Down	Blade Up		Blade Down	Blade Up		
4.5 m (14.8 ft)	Standard Stick	kg (lb)	*2350 *(5,182)	*2350 *(5,182)	*2350 *(5,182)				*1235 *(2,723)	*1235 *(2,723)	*1235 *(2,723)	4.22 (13.8)
	Long Stick	kg (lb)	*1955 *(4,311)	*1955 *(4,311)	*1955 *(4,311)	*1740 *(3,837)	*1740 *(3,837)	*1740 *(3,837)	*1180 *(2,602)	*1180 *(2,602)	*1180 *(2,602)	4.84 (15.9)
3 m (9.8 ft)	Standard Stick	kg (lb)	*2825 *(6,229)	*2825 *(6,229)	*2825 *(6,229)	*2180 *(4,807)	1875 (4,134)	1710 (3,771)	*1155 *(2,547)	*1155 *(2,547)	*1155 *(2,547)	5.00 (16.4)
	Long Stick	kg (lb)	*2430 *(5,358)	*2430 *(5,358)	*2430 *(5,358)	*1965 *(4,333)	*1965 *(4,333)	*1965 *(4,333)	*1120 *(2,470)	*1120 *(2,470)	*1120 *(2,470)	5.54 (18.2)
1.5 m (4.9 ft)	Standard Stick	kg (lb)	*3525 *(7,773)	*3525 *(7,773)	2935 (6,472)	*2355 *(5,193)	1790 (3,947)	1625 (3,583)	*1205 *(2,657)	*1205 *(2,657)	*1205 *(2,657)	5.27 (17.3)
	Long Stick	kg (lb)	*3225 *(7,111)	*3225 *(7,111)	*3225 *(7,111)	*2205 *(4,862)	1780 (3,925)	1610 (3,550)	*1165 *(2,569)	*1165 *(2,569)	*1165 *(2,569)	5.78 (19.0)
0 m (0 ft)	Standard Stick	kg (lb)	*3645 *(8,037)	3135 (6,913)	2760 (6,086)	*2375 *(5,237)	1715 (3,782)	1555 (3,429)	*1395 *(3,076)	*1395 *(3,076)	*1395 *(3,076)	5.10 (16.7)
	Long Stick	kg (lb)	*3600 *(7,938)	3100 (6,836)	2725 (6,009)	*2335 *(5,149)	1680 (3,704)	1515 (3,342)	*1315 *(2,900)	*1315 *(2,900)	1100 (2,426)	5.62 (18.4)

Maximum Weight includes steel tracks with rubber pads, counterweight, operator, full fuel tank, blade and no bucket.

*The above loads are in compliance with hydraulic excavator lift capacity rating standard ISO 10567:2007 and they do not exceed 87% of hydraulic lifting capacity or 75% of tipping capacity. The excavator bucket weight is not included on this chart.

307.5 Environmental Declaration

The following information applies to the machine at the time of final manufacture as configured for sale in the regions covered in this document. The content of this declaration is valid as of the date issued; however, content related to machine features and specifications are subject to change without notice. For additional information, please see the machine's Operation and Maintenance Manual.

For more information on sustainability in action and our progress, please visit <https://www.caterpillar.com/en/company/sustainability>.

Engine

- The Cat® C3.3B engine meets U.S. EPA Tier 4 Final and EU Stage V emission standards.
- Cat diesel engines are required to use ULSD (ultra-low sulfur diesel fuel with 15 ppm of sulfur or less) or ULSD blended with the following lower-carbon intensity fuels** up to:
 - ✓ 20% biodiesel FAME (fatty acid methyl ester)*
 - ✓ 100% renewable diesel, HVO (hydrogenated vegetable oil) and GTL (gas-to-liquid) fuels
 Refer to guidelines for successful application. Please consult your Cat dealer or “Caterpillar Machine Fluids Recommendations” (SEBU6250) for details.

***Engines with no aftertreatment devices can use higher blends, up to 100% biodiesel (for use of blends higher than 20% biodiesel, consult your Cat dealer).*

***Tailpipe greenhouse gas emissions from lower-carbon intensity fuels are essentially the same as traditional fuels.*

Air Conditioning System

- The air conditioning system on this machine contains the fluorinated greenhouse gas refrigerant R134a (Global Warming Potential = 1430). The system contains 0.90 kg (2.20 lb) of refrigerant which has a CO₂ equivalent of 1.287 metric tonnes (1.576 tons).

Paint

- Based on best available knowledge, the maximum allowable concentration, measured in parts per million (PPM), of the following heavy metals in paint are:
 - Barium < 0.01%
 - Cadmium < 0.01%
 - Chromium < 0.01%
 - Lead < 0.01%

Sound Performance

Operator Sound Pressure 72 dB(A) (ISO 6396:2008)*
 Exterior Sound Power Level 98 dB(A) (ISO 6395:2008)**

- *The declared dynamic operator sound pressure levels per ISO 6396:2008. The measurements were conducted with the cab doors and windows closed.
- **The labeled sound power level for the CE marked configurations when measured according to the test procedure and conditions specified in 2000/14/EC.

Oils and Fluids

- Caterpillar factory fills with ethylene glycol coolants. Cat Diesel Engine Antifreeze/Coolant (DEAC) and Cat Extended Life Coolant (ELC) can be recycled. Consult your Cat dealer for more information.
- Cat Bio HYDO Advanced is an EU Ecolabel approved biodegradable hydraulic oil.
- Additional fluids are likely to be present, please consult the Operations and Maintenance Manual or the Application and Installation guide for complete fluid recommendations and maintenance intervals.

Features and Technology

- The following features and technology may contribute to fuel savings and/or carbon reduction. Features may vary. Consult your Cat dealer for details.
 - Advanced hydraulic systems balance power and efficiency
 - Power On Demand provides full time efficiency and power when you need it, and is transparent to the operator
 - Auto idle and auto engine shutdown
 - Extended maintenance intervals reduce fluid and filter consumption
 - Remote Flash and Remote Troubleshoot (if equipped)
 - Mini Hydraulic Excavator Ease of Use features improve operator efficiency minimizing fuel consumption (if equipped)
 - Cat Grade Advanced 2D and 3D improves operator efficiency minimizing fuel consumption (if equipped)

Recycling

- The materials included in machines are categorized as below with approximate weight percentage. Because of variations of product configurations, the following values in the table may vary.

Material Type	Weight Percentage
Steel	65.52%
Iron	21.19%
Rubber	3.50%
Mixed Metal	2.20%
Other	1.89%
Nonferrous Metal	1.81%
Plastic	1.55%
Fluid	1.47%
Mixed-Metal and Nonmetal	0.85%
Mixed Nonmetallic	0.01%
Uncategorized	0.00%
Total	100.00%

- A machine with higher recyclability rate will ensure more efficient usage of valuable natural resources and enhance End-of-Life value of the product. According to ISO 16714 (Earth-moving machinery – Recyclability and recoverability – Terminology and calculation method), recyclability rate is defined as percentage by mass (mass fraction in percent) of the new machine potentially able to be recycled, reused or both.

All parts in the bill of material are first evaluated by component type based on a list of components defined by the ISO 16714 and Japan CEMA (Construction Equipment Manufacturers Association) standards. Remaining parts are further evaluated for recyclability based on material type.

Because of variations of product configurations, the following values in the table may vary.

Recyclability – 96%

The data provided above was based on the product configuration as provided by the individual product group.

Standard and Optional Equipment

Standard and optional equipment may vary. Consult your Cat dealer for details.

	Standard	Optional		Standard	Optional
ENGINE			OPERATOR ENVIRONMENT <i>(continued)</i>		
Cat C2.4 Diesel Engine (U.S. EPA Tier 4 Final/ EU Stage V) – Electronic Engine, Turbo, Diesel Particulate Filter (DPF)	✓		Radio – Bluetooth®, Auxiliary, Microphone, USB (charging only)	✓	
Automatic Engine Idle	✓		Skylight	✓	
Automatic Engine Shutdown	✓		Signaling/Warning Horn	✓	
Automatic Swing Brake	✓		Cab and (left side) Boom Work Lights	✓	
Automatic Two Speed Travel	✓		Utility Space for Mobile Phone	✓	
Fuel Water Separator with Indicator	✓		Rain Visor		✓
Radial Seal – Double Element Air Filter	✓		Next Generation Color LCD Monitor (IP66)	✓	
Extended Life Coolant, –37° C (–37° F)	✓		– Jog Dial Interface (cab machines only)		
HYDRAULICS			– Fuel Level and Coolant Temperature Gauges		
Smart Tech Electronic Pump	✓		– Maintenance and Machine Monitoring		
Variable Displacement Piston Pump	✓		– Performance and Machine Adjustments		
Load Sensing/Flow Sharing Hydraulics	✓		– Numeric Security Code		
Power On Demand	✓		– Multiple Languages		
Hydraulic Temperature Monitoring	✓		– Camera Ready (IP68 and IP69K)		
Certified Accumulator	✓		– Hour Meter with Wake Up Switch		
HYDO™ Advanced Hydraulic Oil	✓		Next Generation Advanced Monitor		✓
OPERATOR ENVIRONMENT			<i>(below are all included with Next Generation Advanced Monitor option)</i>		
Top Guard ISO 10262 1998 Level I	✓		– Jog Dial Control Interface		
ROPS ISO 12117-2:2008	✓		– Touch Screen		
Stick Steer Mode	✓		– Site Reference System		
Travel Cruise Control	✓		– High Definition Camera Capable (IP68 and IP69K)		
Control Pattern Changer	✓		– Numeric Security Code		
Adjustable Wrist Rests	✓		TECHNOLOGY <i>(availability varies by region)</i>		
Molded Footrests	✓		Ease of Use Indicate		✓
Removable, Washable Floor Mat	✓		Ease of Use E-Fence		✓
Travel Pedals and Hand Levers	✓		Cat Grade Advanced 2D		✓
Cat Key with Passcode Option	✓		Cat Grade 3D		✓
HVAC with Automatic Temperature Control	✓		Product Link™ Basic	✓	
Hydraulic Lockout Controls	✓		Product Link Elite (regulations apply)		✓
Integrated Lower Front Window	✓				
Assisted Front Window Overhead Storage	✓				
Rear Window Emergency Exit	✓				
Cab Mirrors (vary by region)	✓				
Fabric, High Back, Suspension Seat	✓				
Air Suspension Heated Seat		✓			
Retractable Seat Belt (75 mm/3 in)	✓				
Seat Belt Reminder System		✓			
Coat Hook	✓				
Cup Holder	✓				
LED Interior Light	✓				
Literature Holder	✓				
Mounting Bosses for Top and Front Guards	✓				
12V Power Socket	✓				

(continued on next page)

307.5 Mini Hydraulic Excavator

Standard and Optional Equipment *(continued)*

Standard and optional equipment may vary. Consult your Cat dealer for details.

	Standard	Optional		Standard	Optional
UNDERCARRIAGE			GUARDING		
Greased and Lubricated Track	✓		ROPS ISO 12117-2:2008	✓	
Tie Down Eyes on Track Frame	✓		Top Guard ISO 10262:1998 (Level I)	✓	
Dozer Straight Blade	✓		Top Guard ISO 10262:1998 (Level II)		✓
Dozer Float	✓		Front Guard (Mesh) ISO 10262:1998 (Level I)		✓
Bolt-on, Reversible Wear Edge	✓		Front Guard (Heavy Duty) ISO 10262:1998 (Level II)		✓
Steel Tracks (450 mm/17.7 in wide)		✓	Track Guards		✓
Wide Steel Tracks (600 mm/23.6 in)		✓	OTHER		
Steel Track with Rubber Pads		✓	Locks on External Enclosure Doors	✓	
Track Guides		✓	Lockable Fuel Cap	✓	
BOOM, STICK AND LINKAGES			Beacon Socket	✓	
One Piece Boom (3700 mm/145.7 in)	✓		Rear Reflectors	✓	
Standard Stick (1665 mm/65.6 in)	✓		Water Jacket Heater		✓
Long Stick (2200 mm/86.6 in)		✓	Refueling Pump		✓
Front Shovel Capable – Pin-on/Manual Coupler/Hydraulic Coupler for Cat Tools	✓				
Thumb Ready (not available in all regions)	✓				
Attachments including Buckets, Augers and Hammers		✓			
2nd Auxiliary Hydraulic Lines		✓			
Boom Lowering Control Valve (Standard in Europe)		✓			
Boom Lowering Control Valve (Standard in Europe)		✓			
Bucket Linkage with Lift Eye		✓			
Certified Lifting Eye (optional in some regions)	✓				
ELECTRICAL					
12 Volt Electrical System	✓				
90 Ampere Alternator	✓				
900 CCA Maintenance Free Battery	✓				
Lock Out/Tag Out Battery Disconnect	✓				
Ignition Key Stop Switch	✓				
Travel Alarm	✓				
Rear and Side Camera	✓				
Rotating Beacon		✓			

For more complete information on Cat products, dealer services, and industry solutions, visit us on the web at www.cat.com

© 2024 Caterpillar
All rights reserved

Materials and specifications are subject to change without notice. Featured machines in photos may include additional equipment. See your Cat dealer for available options.

CAT, CATERPILLAR, LET'S DO THE WORK, their respective logos, "Caterpillar Corporate Yellow", the "Power Edge" and Cat "Modern Hex" trade dress as well as corporate and product identity used herein, are trademarks of Caterpillar and may not be used without permission.

AEHQ8158-04 (09-2024)
Replaces AEHQ8158-03
Build Number: 07A
(North America and Europe)

