

140

MOTOR GRADER



Engine Power
Operating Weight

186 kW (250 hp)
19 198 kg (42,325 lb)

Cat® C9.3 Engine meets U.S. EPA Tier 4 Final and EU Stage V emission standards.



THE NEW CAT® 140

GRADING GREATER LENGTHS

THE CAT® 140 uses Caterpillar's 45 years of refined steering wheel and lever controls experience for more precise grading. With a range of technology options, you can improve grading accuracy and save on materials. With lowered maintenance intervals, the 140 Motor Grader sets the pace for low operating costs, while maintaining productivity and efficiency.



GET TO BETTER GRADE

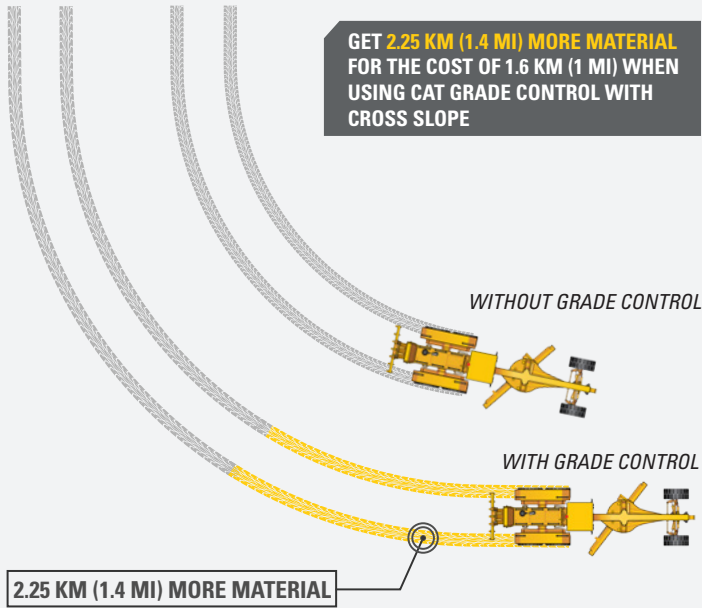
The new Cat 140 Motor Grader combines steering wheel and lever controls and Cat Grade technology for high performance.

- + SPEND LESS TIME AND MONEY ON REGULAR MAINTENANCE
- + UPDATED CAB FOR MAXIMUM COMFORT
- + FACTORY INTEGRATED GRADE TECHNOLOGY OPTIONS



SAVE MORE MATERIAL.

Use 40% less material with Cat Grade Control with Cross Slope.



SCENARIO:

1559 M³/KM (2,039 YD³/MI) MOVED WITH NON-GRADE CONTROL – 924 M³/KM (1,208 YD³/MI) MOVED WITH GRADE CONTROL = 635 M³/KM (831 YD³/MI) MATERIAL SAVED

UP TO 20% LOWER MAINTENANCE COSTS¹

Extend typical maintenance intervals with the new filtration technology and grouped filters for easy access.

CAB DESIGNED FOR MAXIMUM COMFORT

Be productive and comfortable with steering wheel and lever controls and the ergonomically adjustable console and seat.

SAVE UP TO 40% IN MATERIAL²

Use less material with scalable Cat Grade technology solutions to increase accuracy and consistency.

¹ Compared to 140/140M3

² Compared to not using Cat Grade control



TAKE THE GUESSWORK OUT OF MANAGING YOUR EQUIPMENT CAT TECHNOLOGY

Cat Cat Equipment Management telematics technology helps take the complexity out of managing your job sites – by gathering data generated by your equipment, materials, and people – and serving it up to you in customizable formats.



VISIONLINK®

VisionLink® takes the guesswork out of managing your entire fleet – regardless of size or equipment manufacturer.* Review equipment data from your desktop or mobile device to maximize uptime and optimize assets. With interactive dashboards, VisionLink makes it easier for operations of all sizes to make informed decisions that lower costs, simplify maintenance, and improve safety and security on your jobsite. With different subscription-level options, your Cat dealer can help you determine what you need to connect your fleet and manage your business.

**Data field availability can vary by equipment manufacturer.*

REMOTE SERVICES EQUIPMENT MANAGEMENT

Remote Services* is a suite of technologies that improve your jobsite efficiency.

Remote Troubleshoot allows your Cat dealer to perform diagnostic testing on your connected machine remotely, pinpointing potential issues while the machine is in operation. Remote troubleshooting ensures the technician arrives with the correct parts and tools the first time, eliminating additional trips to save you time and money.

Remote Flash allows you to update onboard software without a technician being present, allowing you to initiate software updates when convenient, increasing your overall operating efficiency.

**Must be within cell range coverage.*

CAT INSPECT EQUIPMENT MANAGEMENT

Cat Inspect is a mobile application that allows you to easily perform digital preventative maintenance checks, inspections, and daily walkarounds. The app includes machine-specific Preventive Maintenance (PM) checklists to perform service intervals as recommended in the Operation and Maintenance Manual. Inspections can easily be integrated with other Cat data systems like VisionLink so you can keep a close eye on your fleet.

OPTIONAL GRADE TECHNOLOGY



CROSS SLOPE

Cat Grade with Cross Slope is an integrated system that enables you to achieve grade faster and more accurately by automating the cross slope of the blade, allowing you to get more done in the same amount of time.



CROSS SLOPE INDICATE

Cat Grade with Cross Slope Indicate shows cross slope information on the integrated machine display. Cross Slope Indicate improves grading efficiency by providing real-time cross slope to you without the added expense of equipment to automate blade functions.



DIGITAL BLADE SLOPE METER

View blade slope on the integrated machine display with the Digital Blade Slope Meter. Reduce the need for manual grade checking to keep you and your worksite safer.



ADDITIONAL OPTIONS

Cat Grade Attachment Ready Option (ARO) integrates easily with Cat Grade and other grade control systems to help you get the most out of your motor grader. Stable Blade helps improve your finished surface quality by reducing machine bounce.

USE UP TO 40% LESS MATERIAL

WITH CAT GRADE TECHNOLOGY



LOWER MAINTENANCE COSTS
UP TO 20%



NEXT GENERATION FILTERS

Filters are grouped together for preventative maintenance and easy access. With less waste, the filters are more environmentally friendly.

LONGER SERVICE INTERVALS

Maintenance intervals are synchronized to reduce downtime. Instead of changing filters every 500 hours, the new filters are changed at 1,000 hours.

GROUND LEVEL FUEL FILL

Ground level fueling reduces the need to climb onto the machine. With a large fuel capacity of 378.5 L (100 gal) and ECO mode engaged, you can work longer without the need to refuel.

FEEL THE CONTROL AND POWER WITH THE ALL-WHEEL DRIVE OPTION

Providing maximum power of 201 kW (270 hp) and full power turns, the all-wheel drive option helps you get the best footing.



MAXIMUM TRACTION WITH ALL-WHEEL DRIVE

The all-wheel drive (AWD) option assists with traction and maneuvering the machine. The increased power with all-wheel drive handles rough terrain with extra traction for better productivity.

FAMILIAR CONTROLS

Distances between the steering wheel and levers are optimized to help reduce effort and strain on the operator.

ISO-CERTIFIED ROPS

The ISO-certified Rollover Protective Structure (ROPS) cab is sound suppressed and sealed. Vents provide heating and cooling.

COMFORTABLE CAB

Optional air suspension seat lets you adjust to your ideal comfort level. Convenience features include radio, cup and bottle holders, and storage.

REFINED STEERING WHEEL AND LEVER CONTROLS

COMFORT WHERE IT COUNTS





CONVENIENT SETTINGS

Get all the settings information that you need, including integrated technology options on the information display screen.



ENHANCED VISIBILITY

With the larger windows, rear and sideview mirrors, you can see the job site all around you. Rearview camera option offers a wide view of the rear of the machine to get the best visibility.



STOP SAFELY

If the engine should unexpectedly stall, you can count on the secondary steering system to stop safely. When the main pump pressure drops, the secondary steering system will turn on automatically.



EASY ON AND OFF

Work safely with three points of contact when entering and exiting the machine with strategically placed walkways and grab rails.

The 140 Motor Grader is equipped with the six-cylinder Cat C9.3 engine for power and reliability. The 140 is optimized for power in all gears to get the job done.

PROVEN POWER AND RELIABILITY ELEVATE YOUR PERFORMANCE



REDUCE COOLING SYSTEM CLEANING

Adding the reversing fan option helps reduce maintenance costs. The fan helps prevent material from building up and blocking air flow by the rear door intake screen in high debris applications. The reversing fan runs automatically.



Keep your circle moldboard tight for grade precision throughout the motor grader's life. Durable structures with drawbar circle moldboard adjustments save you service time with replaceable wear inserts with standard or top adjust options.

TOP ADJUST CIRCLE

- + EASY ACCESS
- + MAXIMUM TIGHTNESS
- + REMOVABLE ACCESS PLATES



SEE YOUR INVESTMENT GO FURTHER DESIGNED TO LAST

MAXIMIZE COMPONENT LIFE

Reduce daily greasing requirements with your machine's circle saver. The grease fitting is easy to access and maintain. Always keep your circle drive pinion greased with the Cat Circle Saver for maximum life.

REDUCE DAMAGE

Keep your machine running smoothly with optional guarding in demanding applications. Guards defend against potential damage while running the machine for your transmission, filter, front axles, and hydraulic pumps.

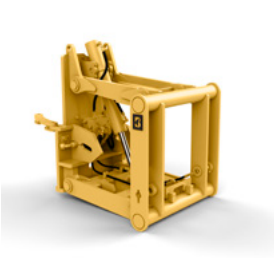
PRESERVE YOUR MACHINE

Protect your pinion drive and circle teeth from damage with the circle drive slip clutch. The standard slip clutch minimizes damage to your circle drive.



MOVE MORE

WITH CAT ATTACHMENTS



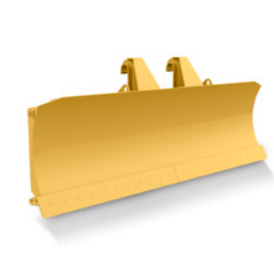
LIFT GROUP



SCARIFIER



MASTLESS SNOW WING



STRAIGHT BLADE



V-PLOW

ENHANCE YOUR PRODUCTIVITY

From masted and mastless snow wings to plows, you can easily expand the versatility of your machine by utilizing a variety of Cat attachments. Each one is designed to fit your needs for improved performance, safety, and stability.

TECHNICAL SPECIFICATIONS

See *cat.com* for complete specifications.

ENGINE		
Engine Model	Cat® C9.3	
Net Power	186 kW	250 hp
Net Power All Wheel Drive (AWD)	201 kW	270 hp
Bore	115 mm	4.5 in
Displacement	9.3 L	567.5 in ³
Stroke	149 mm	5.9 in
Engine RPM	2,000	
Torque Rise – ISO 9294	44%	
Maximum Torque – ISO 9294	1245 N-m	918 lb-ft
Top Speed Forward	48.4 km/h	30.1 mph
Top Speed Reverse	37.4 km/h	23.2 mph
Turning Radius, Outside Front Tires	7.6 m	24 ft 11 in
<ul style="list-style-type: none"> • The Cat C9.3 engine meets U.S. EPA Tier 4 Final and EU Stage V emission standards. • Advertised power is tested per the specified standard in effect at the time of manufacture. • Net power advertised is the power available at the flywheel when engine is equipped with fan, air cleaner, CEM exhaust gas aftertreatment, alternator, and cooling fan running at intermediate speed. • Engine speed at 2,000 rpm. 		
WEIGHT		
Weight*	19 198 kg	42,325 lb
All-Wheel Drive (AWD) Weight*	20 236 kg	44,613 lb
*Typically equipped operating weight is calculated with full fuel tank, coolant, lubricants, operator, push block, transmission guard, rear ripper/scarifier, 14.0R24 tires on multi-piece rims, and other equipment.		
SERVICE REFILL CAPACITIES		
Fuel Tank	378 L	100 gal
Circle Drive	7 L	1.8 gal
Engine Crankcase	30 L	7.9 gal
Cooling System	57 L	15 gal
Hydraulic System	55 L	14.5 gal
DEF Tank	12.5 L	3.3 gal
Front Wheel Spindle Bearing (each)	0.5 L	0.13 gal

BLADE RANGE		
Circle Center Shift		
Right	728 mm	28.6 in
Left	752 mm	29.6 in
Moldboard Side Shift		
Right	512 mm	20.1 in
Left	663 mm	26.1 in
Blade Tip Range		
Forward	40°	
Backward	5°	
Maximum Shoulder Reach Outside of Tires		
Right	1928 mm	75.9 in
Left	1764 mm	69.4 in
Maximum Depth of Cut	735 mm	28.9 in
Maximum Lift Above Ground	480 mm	18.9 in
MOLDBOARD		
Width	3.7 m	12 ft
Height	594 mm	23.4 in
End Bit	152 mm	6 in
Cutting Edge	152 mm	6 in
Arc Radius	413 mm	16.3 in
Throat Clearance	124 mm	4.9 in
DIMENSIONS		
Length of Machine*	10 100 mm	397.6 in
Maximum Height	3354 mm	148.8 in
Width	2480 mm	97.6 in
Basic Blade Width	3556 mm	140 in
*Typically equipped with push block and ripper.		
AIR CONDITIONING SYSTEM		
The air conditioning system on this machine contains the fluorinated greenhouse gas refrigerant R134a (Global Warming Potential = 1430). The system contains 1.8 kg (1.8 lb) of refrigerant which has a CO ₂ equivalent of 2.574 metric tonnes (2.837 tons).		

STANDARD & OPTIONAL EQUIPMENT

Standard and optional equipment may vary. Consult your Cat dealer for details.

ENGINE	STANDARD	OPTIONAL
Cat C9.3 engine	•	
Reversing fan		•
ECO mode	•	
All-wheel drive (AWD)		•
50° C (122° F) ambient capacity	•	
Engine idle shutdown timer	•	
Differential lock	•	
140 CAB	STANDARD	OPTIONAL
ROPS, standard sound suppression	•	
Mechanical suspension seat	•	
Air suspension adjustable seat		•
Open ROPS cab		•
Information display screen	•	
Adjustable control console	•	
Entertainment Radio Ready	•	
Halogen lighting	•	
LED lighting		•
USB/auxiliary radio		•
TECHNOLOGY	STANDARD	OPTIONAL
VisionLink®	•	
Cat Grade with Digital Blade Slope Meter		•
Cat Grade with Cross Slope Indicate		•
Cat Grade with Cross Slope		•
Cat Grade with Attachment Ready Option (ARO)		•
Stable Blade		•
Remote Flash		•
Remote Troubleshoot		•

DRAWBAR CIRCLE MOLDBOARD	STANDARD	OPTIONAL
Drawbar circle moldboard	•	
Top adjust		•
Circle drive slip clutch	•	
Circle saver		•
SAFETY AND SECURITY	STANDARD	OPTIONAL
Rearview mirror	•	
Sideview mirror	•	
Signaling/warning horn	•	
Secondary steering system	•	
Rearview camera		•
Hydraulic brakes	•	
SERVICE AND MAINTENANCE	STANDARD	OPTIONAL
Ground level fuel fill	•	
Grouped location for engine oil and fuel filters	•	
Extended Life Coolant	•	
ATTACHMENTS	STANDARD	OPTIONAL
Counterweight		•
Push block		•
Front lift group		•
Ripper		•
Scarifier		•
Auxiliary hydraulic lines		•
V-plow		•
One-way plow		•

For more complete information on Cat products, dealer services and industry solutions, visit us on the web at www.cat.com.

© 2023 Caterpillar. All Rights Reserved.

VisionLink is a trademark of Caterpillar Inc., registered in the United States and in other countries.

Materials and specifications are subject to change without notice. Featured machines in photos may include additional equipment. See your Cat dealer for available options.

CAT, CATERPILLAR, LET'S DO THE WORK, their respective logos, "Caterpillar Corporate Yellow," the "Power Edge" and Cat "Modern Hex" trade dress as well as corporate and product identity used herein, are trademarks of Caterpillar and may not be used without permission.
www.cat.com www.caterpillar.com

AEXQ2468-01 (10-2023)
Replaces AEXQ2468
Build Number 13A
(U.S Tier 4 Final,
EU Stage V)

