



# 336 GC

## Hydraulic Excavator

# Technical Specifications

Configurations and features may vary by region. Please consult your Cat® dealer for availability in your area.

## Table of Contents

<b>Specifications</b> .....	<b>2</b>
Engine .....	2
Swing Mechanism .....	2
Weights .....	2
Track .....	2
Drive .....	2
Hydraulic System .....	2
Service Refill Capacities .....	2
Standards .....	2
Sound Performance .....	2
Operating Weights and Ground Pressures .....	3
Major Component Weights .....	3
Dimensions .....	4
Working Ranges and Forces .....	5
Bucket Specifications and Compatibility .....	6
Attachments Offering Guide .....	7
<b>Standard and Optional Equipment</b> .....	<b>8</b>
<b>Dealer Installed Kit and Attachments</b> .....	<b>10</b>

# 336 GC Hydraulic Excavator Specifications

## Engine

Engine Model	Cat® C7.1	
Net Power – ISO 9249	193.5 kW	259 hp
Engine Power – ISO 14396	195 kW	261 hp
Bore	105 mm	4 in
Stroke	135 mm	5 in
Displacement	7.1 L	433 in <sup>3</sup>

- Meets China Nonroad Stage III emission standards, equivalent to U.S. EPA Tier 3 and EU Stage IIIA.
- Recommended for use up to 3300 m (10,830 ft) altitude with engine power derate above 2300 m (7,550 ft).
- Net power is tested per ISO 9249. Standards in effect at the time of manufacture.
- Net power advertised is the power available at the flywheel when the engine is equipped with fan, air intake system, exhaust system and alternator.
- Rated speed at 2,000 rpm.

## Swing Mechanism

Swing Speed	8.74 rpm	
Maximum Swing Torque	137 kN·m	101,168 lbf·ft

## Weights

Operating Weight	35 400 kg	78,100 lb
------------------	-----------	-----------

- Long undercarriage, Reach boom, R2.8DB (9'2") stick, HD 1.88 m<sup>3</sup> (2.46 yd<sup>3</sup>) bucket, 600 mm (24") double grouser shoes, and 6.8 mt (15,000 lb) counterweight.

## Track

Standard Track Shoes Width	600 mm	24 in
Number of Shoes (each side)	49	
Number of Track Rollers (each side)	8	
Number of Carrier Rollers (each side)	2	

## Drive

Gradeability	35°/70%	
Maximum Travel Speed	4.7 km/h	3 mph
Maximum Drawbar Pull	297 kN	66,656 lbf

## Hydraulic System

Main System – Maximum Flow – Implement	559 L/min (279 × 2 pumps)	148 gal/min (74 × 2 pumps)
Maximum Pressure – Equipment – Implement	35 000 kPa	5,076 psi
Maximum Pressure – Travel	35 000 kPa	5,076 psi
Maximum Pressure – Swing	28 000 kPa	4,061 psi
Boom Cylinder – Bore	145 mm	6 in
Boom Cylinder – Stroke	1440 mm	57 in
Stick Cylinder – Bore	160 mm	6 in
Stick Cylinder – Stroke	1738 mm	68 in
DB Bucket Cylinder – Bore	145 mm	6 in
DB Bucket Cylinder – Stroke	1151 mm	45 in

## Service Refill Capacities

Fuel Tank Capacity	600 L	158.5 gal
Cooling System	19 L	4.9 gal
Engine Oil (with filter)	20 L	5.3 gal
Swing Drive (each)	18 L	4.8 gal
Final Drive (each)	8 L	2.1 gal
Hydraulic System (including tank)	373 L	98.5 gal
Hydraulic Tank	161 L	42.5 gal

## Standards

Brakes	ISO 10265:2008
Cab/ROPS	ISO 12117-2:2008
FOGS (optional)	ISO 10262-2:1998

## Sound Performance

ISO 6395:2008 (external)	105 dB(A)
ISO 6396:2008 (inside cab)	72 dB(A)

- Hearing protection may be needed when operating with an open operator station and cab (when not properly maintained or doors/windows open) for extended periods or in a noisy environment.

# 336 GC Hydraulic Excavator Specifications

## Operating Weights and Ground Pressures

	600 mm (24") Double Grouser Shoes		600 mm (24") Triple Grouser Shoes	
	Weight	Ground Pressure	Weight	Ground Pressure
	kg (lb)	kPa (psi)	kg (lb)	kPa (psi)
<b>6.8 mt (14,990 lb) Counterweight + Long Undercarriage Base Machine</b>				
Reach Boom + R3.2 (10'6") Stick + 1.88 m <sup>3</sup> (2.46 yd <sup>3</sup> ) HD Bucket	35 600 (78,400)	66.2 (9.6)	34 800 (76,700)	64.8 (9.4)
Reach Boom + R2.8 (9'2") Stick + 1.88 m <sup>3</sup> (2.46 yd <sup>3</sup> ) HD Bucket	35 400 (78,100)	66.0 (9.6)	34 700 (76,500)	64.6 (9.4)

All operating weights include a 90% fuel tank with 75 kg (165 lb) operator.

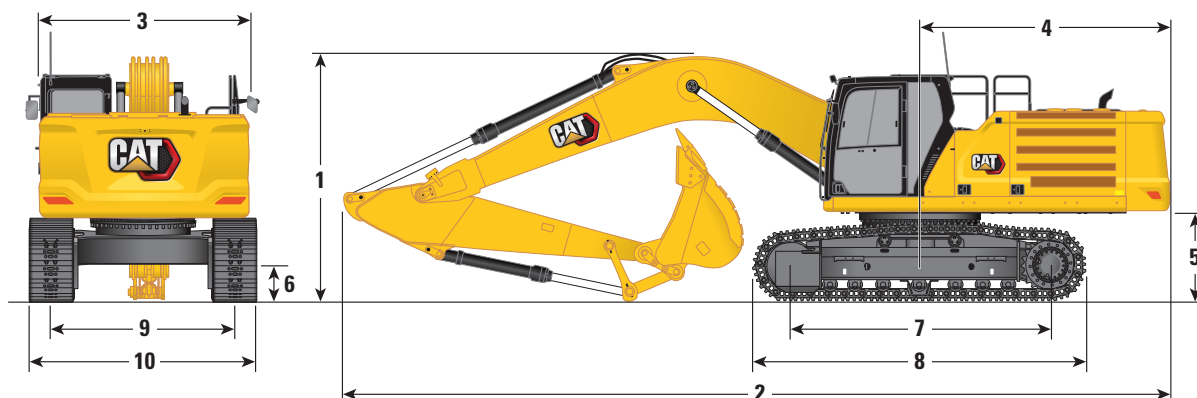
## Major Component Weights

	kg	lb
Base machine with 6.8 mt (14,990 lb) counterweight, standard swing frame, base frame with standard track rollers and carrier rollers	23 010	50,730
Track Shoes:		
600 mm (24") Width, 15.5 mm (0.61") Thick, Double Grouser Track Shoes	4850	10,700
600 mm (24") Width, 11 mm (0.43") Thick, Triple Grouser Track Shoes	3750	8,270
Two Boom Cylinders	560	1,240
Weight of 90% Fuel Tank and 75 kg (165 lb) Operator	550	1,210
Counterweight:		
6.8 mt Counterweight	6800	14,900
Swing Frame:		
Swing Frame	3160	6,960
Undercarriage:		
Base Frame with Standard Track Rollers and Carrier Rollers for Long Undercarriage	8400	18,520
Boom (including lines, pins, stick cylinder):		
Reach Boom 6.5 m (21'4")	3140	6,910
Sticks (including lines, pins, bucket cylinder, bucket linkage):		
Reach Stick R2.8DB (9'2")	1650	3,650
Reach Stick R3.2DB (10'6")	1760	3,890
Bucket (without linkage):		
1.88 m <sup>3</sup> (2.46 yd <sup>3</sup> ) HD	1710	3,770
Quick Couplers:		
Pin Grabber QC	700	1,550

# 336 GC Hydraulic Excavator Specifications

## Dimensions

All dimensions are approximate and may vary depending on bucket selection.



### Boom Option

**Reach Boom  
6.5 m (21'4")**

### Stick Options

**Reach Stick**

**R3.2DB (10'6")**

**R2.8DB (9'2")**

#### 1 Machine Height:

	R3.2DB (10'6")	10'4"	R2.8DB (9'2")	10'4"
Cab Height	3170 mm	10'4"	3170 mm	10'4"
FOGS Height	3310 mm	10'10"	3310 mm	10'10"
Handrails Height	3160 mm	10'4"	3160 mm	10'4"
With Boom/Stick/Bucket Installed	3470 mm	11'4"	3660 mm	12'0"
With Boom/Stick Installed	3300 mm	10'9"	3430 mm	11'3"
With Boom Installed	2880 mm	9'5"	2880 mm	9'5"
With Boom/Stick/Bucket Installed (with auxiliary lines)	3520 mm	11'6"	3680 mm	12'0"
With Boom/Stick Installed (with auxiliary lines)	3380 mm	11'1"	3480 mm	11'5"
With Boom Installed (with auxiliary lines)	2970 mm	9'9"	2970 mm	9'9"

#### 2 Machine Length:

With Boom/Stick/Bucket Installed	11 170 mm	36'7"	11 220 mm	36'9"
With Boom/Stick Installed	11 130 mm	36'6"	11 180 mm	36'8"
With Boom Installed	9960 mm	32'8"	9960 mm	32'8"
With Boom/Stick/Bucket Installed (with auxiliary lines)	11 170 mm	36'7"	11 220 mm	36'9"
With Boom/Stick Installed (with auxiliary lines)	11 130 mm	36'6"	11 180 mm	36'8"
With Boom Installed (with auxiliary lines)	10 010 mm	32'10"	10 010 mm	32'10"

#### 3 Upperframe Width without Walkways

	2970 mm	9'9"	2970 mm	9'9"
--	---------	------	---------	------

#### 4 Tail Swing Radius

	3530 mm	11'7"	3530 mm	11'7"
--	---------	-------	---------	-------

#### 5 Counterweight Clearance

	1250 mm	4'1"	1250 mm	4'1"
--	---------	------	---------	------

#### 6 Ground Clearance

	510 mm	1'8"	510 mm	1'8"
--	--------	------	--------	------

#### 7 Length to Center of Rollers

	4040 mm	13'3"	4040 mm	13'3"
--	---------	-------	---------	-------

#### 8 Track Length

	5030 mm	16'6"	5030 mm	16'6"
--	---------	-------	---------	-------

#### 9 Track Gauge

	2590 mm	8'5"	2590 mm	8'5"
--	---------	------	---------	------

#### 10 Undercarriage Width:

600 mm (24") Shoes	3190 mm	10'6"	3190 mm	10'6"
--------------------	---------	-------	---------	-------

#### Bucket Type

**HD**

**HD**

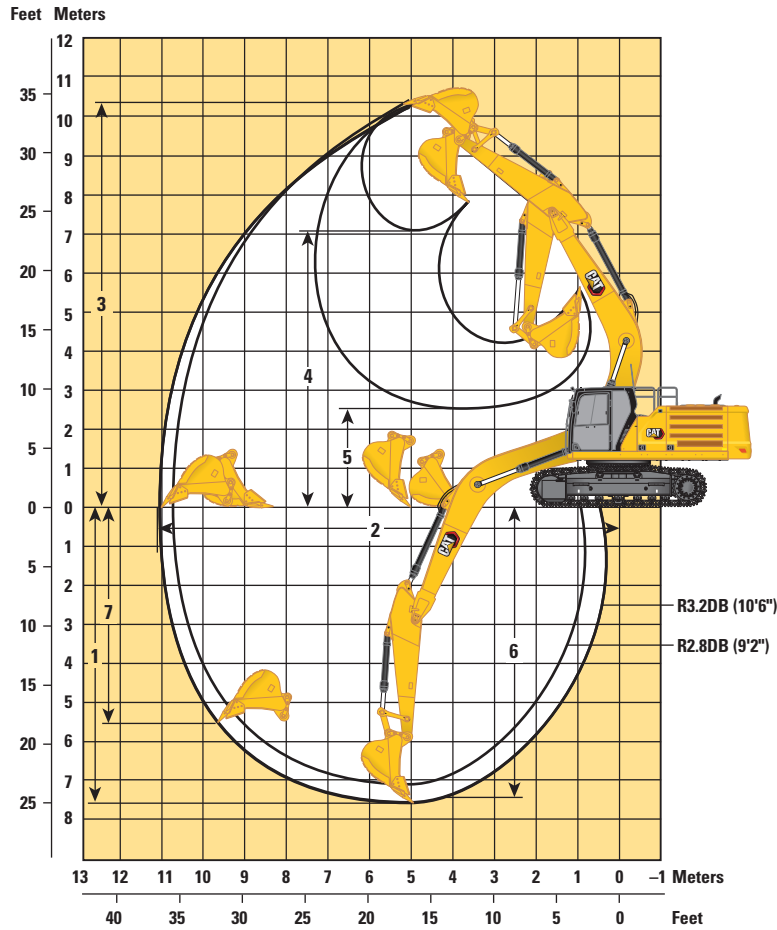
Bucket Capacity	1.88 m <sup>3</sup>	2.46 yd <sup>3</sup>	1.88 m <sup>3</sup>	2.46 yd <sup>3</sup>
-----------------	---------------------	----------------------	---------------------	----------------------

Bucket Tip Radius	1760 mm	5'9"	1760 mm	5'9"
-------------------	---------	------	---------	------

# 336 GC Hydraulic Excavator Specifications

## Working Ranges and Forces

All dimensions are approximate and may vary depending on bucket selection.



Boom Option	Reach Boom 6.5 m (21'4")			
	Stick Options			
	R3.2DB (10'6")		R2.8DB (9'2")	
1 Maximum Digging Depth	7520 mm	24'8"	7120 mm	23'4"
2 Maximum Reach at Ground Line	11 050 mm	36'3"	10 740 mm	35'2"
3 Maximum Cutting Height	10 300 mm	33'9"	10 360 mm	33'11"
4 Maximum Loading Height	7080 mm	23'2"	7080 mm	23'2"
5 Minimum Loading Height	2580 mm	8'5"	2980 mm	9'9"
6 Maximum Depth Cut for 2440 mm (8'0") Level Bottom	7360 mm	24'1"	6950 mm	22'9"
7 Maximum Vertical Wall Digging Depth	5660 mm	18'6"	5620 mm	18'5"
Bucket Digging Force (ISO)	197 kN	44,350 lbf	197 kN	44,350 lbf
Stick Digging Force (ISO)	148 kN	33,160 lbf	164 kN	36,890 lbf
Bucket Type	HD		HD	
Bucket Capacity	1.88 m <sup>3</sup>	2.46 yd <sup>3</sup>	1.88 m <sup>3</sup>	2.46 yd <sup>3</sup>
Bucket Tip Radius	1760 mm	5'9"	1760 mm	5'9"

# 336 GC Hydraulic Excavator Specifications

## Bucket Specifications and Compatibility

	Linkage	Width		Capacity		Weight		Fill %	Long Undercarriage		
		mm	in	m <sup>3</sup>	yd <sup>3</sup>	kg	lb		6.8 mt (14,990 lb) Counterweight		
									Reach Boom		
									R2.8 (9'2")	R3.2 (10'6")	
<b>Pin-On (No Quick Coupler)</b>											
Heavy Duty	DB	1400	55	1.64	2.14	1510	3,329	100	●	●	
	DB	1466	58	1.76	2.30	1557	3,324	100	●	⊙	
	DB	1500	61	1.88	2.46	1608	3,545	100	⊙	⊙	
	DB	1650	67	2.12	2.77	1706	3,761	100	⊖	⊖	
Severe Duty Spade	DB	1550	61	1.90	2.48	1864	4,109	90	●	⊙	
Severe Duty	DB	1400	56	1.64	2.14	1720	3,791	90	●	●	
	DB	1700	67	2.12	2.77	2004	4,417	90	⊙	⊖	
	DB	1850	73	2.31	3.02	2097	4,622	90	⊖	○	
Severe Duty Extreme	DB	1700	67	2.05	2.68	2058	4,537	90	⊙	⊖	
Extreme Duty	DB	1400	56	1.64	2.14	1899	4,186	90	●	●	
Maximum load with pin-on (payload + bucket)									kg	5280	4970
									lb	11,640	10,957
<b>With Cat Pin Grabber Coupler</b>											
Heavy Duty	DB	1400	55	1.64	2.14	1510	3,329	100	⊙	⊖	
	DB	1466	58	1.76	2.30	1557	3,324	100	⊙	⊖	
	DB	1500	61	1.88	2.46	1608	3,545	100	⊖	○	
	DB	1650	67	2.12	2.77	1706	3,761	100	○	○	
Severe Duty Spade	DB	1550	61	1.90	2.48	1864	4,109	90	⊖	○	
Severe Duty	DB	1400	56	1.64	2.14	1720	3,791	90	⊙	⊙	
	DB	1700	67	2.12	2.77	2004	4,417	90	○	○	
	DB	1850	73	2.31	3.02	2097	4,622	90	○	○	
Severe Duty Extreme	DB	1700	67	2.05	2.68	2058	4,537	90	○	○	
Extreme Duty	DB	1400	56	1.64	2.14	1899	4,186	90	⊙	⊖	
Maximum load with coupler (payload + bucket)									kg	4584	4276
									lb	10,105	9,427

The above loads are in compliance with hydraulic excavator standard EN474-5:2006 + A3:2013, they do not exceed 87% of hydraulic lifting capacity or 75% of tipping capacity with front linkage fully extended at ground line with bucket curled.

Capacity based on ISO 7451:2007.

Bucket weight with General Duty tips.

### Maximum Material Density:

- 2100 kg/m<sup>3</sup> (3,500 lb/yd<sup>3</sup>)
- ⊙ 1800 kg/m<sup>3</sup> (3,000 lb/yd<sup>3</sup>)
- ⊖ 1500 kg/m<sup>3</sup> (2,500 lb/yd<sup>3</sup>)
- 1200 kg/m<sup>3</sup> (2,000 lb/yd<sup>3</sup>)

Caterpillar recommends using appropriate work tools to maximize the value customers receive from our products. Use of work tools, including buckets, which are outside of Caterpillar's recommendations or specifications for weight, dimensions, flows, pressures, etc. may result in less-than-optimal performance, including but not limited to reductions in production, stability, reliability, and component durability. Improper use of a work tool resulting in sweeping, prying, twisting and/or catching of heavy loads will reduce the life of the boom and stick.

# 336 GC Hydraulic Excavator Specifications

## Attachments Offering Guide

Not all Attachments are available in all regions. Consult your Cat dealer for configurations available in your region.

Match

### PIN-ON ATTACHMENTS

Undercarriage		L	
Counterweight		6.8 mt (14,990 lb)	
Boom Type		Reach	
Stick Length		2.8 m (9'2")	3.2 m (10'6")
Hydraulic Hammers	H140 GC	✓	✓
	H140 GC S	✓	✓
	H160 GC	✓	✓
	H160 GC S	✓	✓
Compactors (Vibratory Plate)	CVP110	✓	✓

### CAT PIN GRABBER COUPLER ATTACHMENTS

Undercarriage		L	
Counterweight		6.8 mt (14,990 lb)	
Boom Type		Reach	
Stick Length		2.8 m (9'2")	3.2 m (10'6")
Hydraulic Hammers	H140 GC	✓	✓
	H140 GC S	✓	✓
	H160 GC	✓	✓
	H160 GC S	✓	✓
Compactors (Vibratory Plate)	CVP110	✓	✓

# 336 GC Standard and Optional Equipment

## Standard and Optional Equipment

Standard and optional equipment may vary. Consult your Cat dealer for details.

	Standard	Optional		Standard	Optional
<b>CAB</b>			<b>ENGINE</b>		
ROPS, standard sound suppression	✓		Cold start block heaters		✓
High-resolution 203 mm (8") LCD touchscreen monitor	✓		Two selectable modes: Power, Smart	✓	
Automatic bi-level air conditioner	✓		Automatic engine speed control	✓	
Jog dial and shortcut keys for monitor control	✓		52° C (126° F) high-ambient cooling capacity	✓	
Keyless push-to-start engine control	✓		Hydraulic reverse fan		✓
Height-adjustable console, three steps with tool	✓		-18° C (0° F) cold start capability	✓	
Fixed left-side console	✓		-32° C (-25° F) cold start capability		✓
Mechanically adjustable seat suspension	✓		Double element air filter with integrated precleaner	✓	
51 mm (2") orange seat belt	✓		Dual stage four micron main filter and 10 micron primary filter with water separator and water separator indicator switch	✓	
Bluetooth® integrated radio (no USB, aux port or microphone)	✓		Biodiesel capability up to B20	✓	
12V DC outlets	✓		<b>HYDRAULIC SYSTEM</b>		
Document storage	✓		Boom and stick regeneration circuit	✓	
Cup and bottle holders	✓		Electronic main control valve	✓	
Openable two-piece front window	✓		Automatic hydraulic oil warm up	✓	
Upper radial wiper with washer	✓		Bio hydraulic oil capability	✓	
Openable steel hatch	✓		Reverse swing damping valve	✓	
LED dome light	✓		Automatic swing parking brake	✓	
Roller front sunscreen	✓		High performance hydraulic return filter	✓	
Roller rear sunscreen		✓	Two speed travel	✓	
Rear window emergency exit	✓		Single one-way auxiliary circuit		✓
Washable floor mat	✓		Combined two-way auxiliary circuit		✓
Beacon ready	✓		Combined two-way auxiliary circuit with hammer return filter		✓
			Medium-pressure auxiliary circuit		✓
			Quick coupler circuit for Cat Pin Grabber		✓

(continued on next page)



## Standard and Optional Equipment *(continued)*

Standard and optional equipment may vary. Consult your Cat dealer for details.

	Standard	Optional		Standard	Optional
<b>UNDERCARRIAGE AND STRUCTURES</b>			<b>SERVICE AND MAINTENANCE</b>		
Towing eye on base frame	✓		Grouped location of engine oil and fuel filters	✓	
Full-length track guiding guards		✓	Scheduled Oil Sampling (S·O·S <sup>SM</sup> ) ports	✓	
Center track guiding guards		✓	QuickEvac <sup>TM</sup> maintenance ready		✓
Bottom guard	✓		Electric refueling pump with automatic shutoff		✓
Travel motor guard	✓		<b>SAFETY AND SECURITY</b>		
Bucket cylinder guard		✓	Caterpillar One Key security system	✓	
Grease lubricated track	✓		Lockable external tool/storage box	✓	
6.8 mt (14,990 lb) counterweight	✓		Lockable door, fuel, and hydraulic tank locks	✓	
600 mm (24") triple grouser track shoes		✓	Lockable fuel drain compartment	✓	
600 mm (24") double grouser track shoes		✓	Service platform with anti-skid plate and recessed bolts	✓	
<b>BOOMS, STICKS AND LINKAGES</b>			RH handrail and hand hold (ISO 2867:2011 compliant)	✓	
6.5 m (21'4") Reach boom	✓		Signaling/warning horn	✓	
2.8 m (9'2") stick		✓	Ground-level secondary engine shutoff switch	✓	
3.2 m (10'6") stick		✓	Rearview camera	✓	
Bucket Linkage, DB family without lifting eye		✓	Falling object guard system		✓
<b>ELECTRICAL SYSTEM</b>					
Maintenance-free 1,000 CCA batteries (×2)	✓				
Centralized electrical disconnect switch	✓				
LED chassis light, LH and RH boom lights, cab lights	✓				
<b>CAT TECHNOLOGY</b>					
Cat Product Link <sup>TM</sup>	✓				
Auto hammer stop	✓				

# 336 GC Attachments

## Dealer Installed Kit and Attachments

Attachments may vary. Consult your Cat dealer for details.

### CAB

- Radial lower wiper
- LH/RH electrical pedal for tool control

### SAFETY AND SECURITY

- Bluetooth receiver kit
- Bluetooth key fob

### GUARDS

- Swivel guard
- Falling object guard system
- Mesh guard full front
- Mesh guard lower half front
- Full protecting vandalism guard

For more complete information on Cat products, dealer services, and industry solutions, visit us on the web at [www.cat.com](http://www.cat.com)

© 2020 Caterpillar  
All rights reserved

Materials and specifications are subject to change without notice. Featured machines in photos may include additional equipment. See your Cat dealer for available options.

CAT, CATERPILLAR, LET'S DO THE WORK, their respective logos, "Caterpillar Corporate Yellow," the "Power Edge" and Cat "Modern Hex" trade dress as well as corporate and product identity used herein, are trademarks of Caterpillar and may not be used without permission.

AEXQ2361-03 (09-2020)  
Replaces AEXQ2361-02  
Build Number: 07C  
(China)

