



336

Hydraulic Excavator

Technical Specifications

Configurations and features may vary by region. Please consult your Cat® dealer for availability in your area.

Table of Contents

Specifications	2
Engine	2
Swing Mechanism	2
Weights	2
Track	2
Drive	2
Hydraulic System	2
Service Refill Capacities	2
Standards	2
Sound Performance	2
Operating Weights and Ground Pressures	3
Major Component Weights	4
Dimensions	5
Working Ranges and Forces	6
Bucket Specifications and Compatibility	7
Attachments Offering Guide	8
Standard and Optional Equipment	9
Dealer Installed Kit and Attachments	11

336 Hydraulic Excavator Specifications

Engine

Engine Model	Cat® C9.3B	
Net Power – ISO 9249	232 kW	311 hp
Engine Power – ISO 14396	234 kW	314 hp
Bore	115 mm	5 in
Stroke	149 mm	6 in
Displacement	9.3 L	568 in ³

- Meets China Nonroad Stage III emission standards, equivalent to U.S. EPA Tier 3 and EU Stage IIIA.
- Recommended for use up to 4500 m (14,760 ft) altitude with engine power derate above 3000 m (9,840 ft).
- Net power is tested per ISO 9249. Standards in effect at the time of manufacture.
- Net power advertised is the power available at the flywheel when the engine is equipped with fan, air intake system, exhaust system and alternator.
- Rated speed at 1,800 rpm.

Swing Mechanism

Swing Speed	8.75 rpm	
Maximum Swing Torque	144 kN·m	106,228 lbf·ft

Weights

Operating Weight	36 100 kg	79,600 lb
<ul style="list-style-type: none"> • Reach boom, HD R2.8DB (9'2") stick, HD 1.88 m³ (2.46 yd³) bucket, and 600 mm (24") triple grouser shoes, 6.8 mt (14,991 lb) counterweight. 		

Track

Standard Track Shoes Width	600 mm	24 in
Optional Track Shoes Width	700 mm	28 in
Number of Shoes (each side)	49	
Number of Track Rollers (each side)	8	
Number of Carrier Rollers (each side)	2	

Drive

Gradeability	35°/70%	
Maximum Travel Speed	4.7 km/h	2.9 mph
Maximum Drawbar Pull	295 kN	66,341 lbf

Hydraulic System

Main System – Maximum Flow – Implement	558 L/min (279 × 2 pumps)	147 gal/min (74 × 2 pumps)
Maximum Pressure – Equipment – Implement	35 000 kPa	5,076 psi
Maximum Pressure – Equipment – Lift Mode	38 000 kPa	5,511 psi
Maximum Pressure – Travel	35 000 kPa	5,076 psi
Maximum Pressure – Swing	29 400 kPa	4,264 psi
Boom Cylinder – Bore	150 mm	6 in
Boom Cylinder – Stroke	1440 mm	57 in
Stick Cylinder – Bore	170 mm	7 in
Stick Cylinder – Stroke	1738 mm	68 in
DB Bucket Cylinder – Bore	150 mm	6 in
DB Bucket Cylinder – Stroke	1151 mm	45 in
TB Bucket Cylinder – Bore	160 mm	6 in
TB Bucket Cylinder – Stroke	1356 mm	53 in

Service Refill Capacities

Fuel Tank Capacity	600 L	158.5 gal
Cooling System	40 L	10.5 gal
Engine Oil (with filter)	32 L	8.5 gal
Swing Drive (each)	18 L	4.8 gal
Final Drive (each)	8 L	2.1 gal
Hydraulic System (including tank)	373 L	98.5 gal
Hydraulic Tank	161 L	42.5 gal

Standards

Brakes	ISO 10265:2008
Cab/ROPS	ISO 12117-2:2008

Sound Performance

ISO 6395:2008 (external)	105 dB(A)
ISO 6396:2008 (inside cab)	73 dB(A)

- Hearing protection may be needed when operating with an open operator station and cab (when not properly maintained or doors/windows open) for extended periods or in a noisy environment.

336 Hydraulic Excavator Specifications

Operating Weights and Ground Pressures

	600 mm (24") Triple Grouser Shoes		600 mm (24") Double Grouser Shoes		600 mm (24") HD Triple Grouser Shoes		700 mm (28") Triple Grouser Shoes	
	Weight	Ground Pressure	Weight	Ground Pressure	Weight	Ground Pressure	Weight	Ground Pressure
	kg (lb)	kPa (psi)	kg (lb)	kPa (psi)	kg (lb)	kPa (psi)	kg (lb)	kPa (psi)
6.8 mt (14,991 lb) Counterweight + Long Undercarriage Base Machine								
HD Reach Boom + HD R3.2 (10'6") Stick + 1.88 m ³ (2.46 yd ³) HD Bucket	36 200 (79,800)	67.4 (9.8)	37 000 (81,500)	68.9 (10.0)	36 900 (81,300)	68.7 (10.0)	36 600 (80,600)	58.4 (8.5)
HD Reach Boom + HD R2.8 (9'2") Stick + 1.88 m ³ (2.46 yd ³) HD Bucket	36 100 (79,600)	67.3 (9.8)	36 900 (81,300)	68.7 (10.0)	36 800 (81,100)	68.5 (9.9)	36 500 (80,400)	58.2 (8.4)
7.56 mt (16,667 lb) Counterweight + Long Undercarriage Base Machine								
HD Reach Boom + HD R3.2 (10'6") Stick + 1.88 m ³ (2.46 yd ³) HD Bucket	37 000 (81,700)	69.0 (10.0)	37 800 (83,300)	70.4 (10.2)	37 700 (83,100)	70.2 (10.2)	37 400 (82,400)	59.7 (8.7)
HD Reach Boom + HD R2.8 (9'2") Stick + 1.88 m ³ (2.46 yd ³) HD Bucket	36 900 (81,400)	68.8 (10.0)	37 700 (83,100)	70.2 (10.2)	37 600 (82,900)	70.0 (10.2)	37 300 (82,200)	59.5 (8.6)

All operating weights include a 90% fuel tank with 75 kg (165 lb) operator.

336 Hydraulic Excavator Specifications

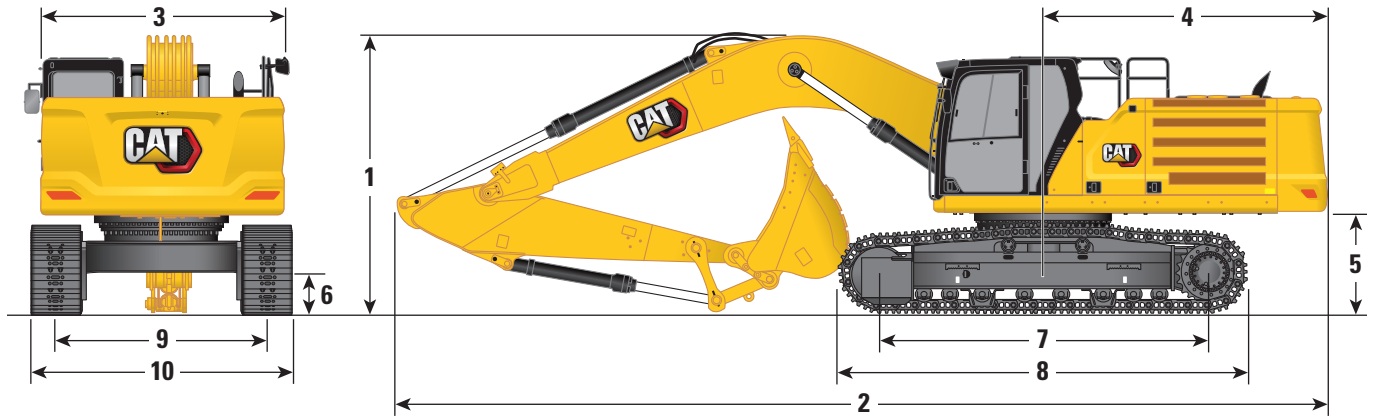
Major Component Weights

	kg	lb
Base machine with 6.8 mt (14,991 lb) counterweight, standard swing frame, base frame with standard track rollers and carrier rollers	24 450	53,910
Base machine with 7.56 mt (16,667 lb) counterweight, HD swing frame, base frame with HD track rollers and carrier rollers	25 280	55,740
Track Shoes:		
600 mm (24") Width, 11 mm (0.43") Thick, Triple Grouser Track Shoes	4090	9,020
600 mm (24") Width, 15.5 mm (0.61") Thick, Double Grouser Track Shoes	4850	10,700
600 mm (24") Width, 15.5 mm (0.61") Thick, HD Triple Grouser Track Shoes	4750	10,470
700 mm (28") Width, 11 mm (0.43") Thick, Triple Grouser Track Shoes	4450	9,800
Two Boom Cylinders	670	1,470
Weight of 90% Fuel Tank and 75 kg (165 lb) Operator	550	1,210
Counterweights:		
6.8 mt Counterweight	6800	14,991
7.56 mt Counterweight	7560	16,667
Swing Frames:		
Standard Swing Frame	3160	6,960
HD Swing Frame	3260	7,180
Long Undercarriage:		
Base Frame with Standard Track Rollers and Carrier Rollers	8670	19,120
Base Frame with HD Track Rollers and Carrier Rollers	8640	19,050
Boom (including lines, pins, stick cylinder):		
HD Reach Boom 6.5 m (21'4")	3480	7,670
Sticks (including lines, pins, bucket cylinder, bucket linkage):		
HD Reach Stick R2.8DB (9'2")	1830	4,030
HD Reach Stick R3.2DB (10'6")	1930	4,250
Bucket (without linkage):		
1.88 m ³ (2.46 yd ³) HD	1710	3,770
Quick Coupler:		
Pin Grabber QC	700	1,550

336 Hydraulic Excavator Specifications

Dimensions

All dimensions are approximate and may vary depending on bucket selection.



Boom Option

HD Reach Boom
6.5 m (21'4")

Stick Options

HD Reach Stick

R3.2DB (10'6")

R2.8DB (9'2")

1 Machine Height:

Cab Height	3170 mm	10.4 ft	3170 mm	10.4 ft
FOGS Height	3310 mm	10.9 ft	3310 mm	10.9 ft
Handrails Height	3160 mm	10.4 ft	3160 mm	10.4 ft
With Boom/Stick/Bucket Installed	3470 mm	11.4 ft	3660 mm	12.0 ft
With Boom/Stick Installed	3300 mm	10.8 ft	3430 mm	11.3 ft
With Boom Installed	2880 mm	9.4 ft	2880 mm	9.4 ft
With Boom/Stick/Bucket Installed (with auxiliary lines)	3520 mm	11.5 ft	3680 mm	12.1 ft
With Boom/Stick Installed (with auxiliary lines)	3380 mm	11.1 ft	3480 mm	11.4 ft
With Boom Installed (with auxiliary lines)	2970 mm	9.7 ft	2970 mm	9.7 ft

2 Machine Length:

With Boom/Stick/Bucket Installed	11 170 mm	36.6 ft	11 220 mm	36.8 ft
With Boom/Stick Installed	11 130 mm	36.5 ft	11 180 mm	36.7 ft
With Boom Installed	9960 mm	32.7 ft	9960 mm	32.7 ft
With Boom/Stick/Bucket Installed (with auxiliary lines)	11 170 mm	36.6 ft	11 220 mm	36.8 ft
With Boom/Stick Installed (with auxiliary lines)	11 130 mm	36.5 ft	11 180 mm	36.7 ft
With Boom Installed (with auxiliary lines)	10 010 mm	32.8 ft	10 010 mm	32.8 ft

3 Upperframe Width without Walkways

2970 mm	9.7 ft	2970 mm	9.7 ft
---------	--------	---------	--------

4 Tail Swing Radius

3530 mm	11.6 ft	3530 mm	11.6 ft
---------	---------	---------	---------

5 Counterweight Clearance

1250 mm	4.1 ft	1250 mm	4.1 ft
---------	--------	---------	--------

6 Ground Clearance

510 mm	1.7 ft	510 mm	1.7 ft
--------	--------	--------	--------

7 Track Length – Length to Center of Rollers

4040 mm	13.3 ft	4040 mm	13.3 ft
---------	---------	---------	---------

8 Track Length

5030 mm	16.5 ft	5030 mm	16.5 ft
---------	---------	---------	---------

9 Track Gauge

2590 mm	8.5 ft	2590 mm	8.5 ft
---------	--------	---------	--------

10 Track Width/Undercarriage Width:

600 mm (24") Shoes	3190 mm	10.5 ft	3190 mm	10.5 ft
700 mm (28") Shoes	3290 mm	10.8 ft	3290 mm	10.8 ft

Bucket Type

HD

HD

Bucket Capacity

1.88 m ³	2.46 yd ³	1.88 m ³	2.46 yd ³
---------------------	----------------------	---------------------	----------------------

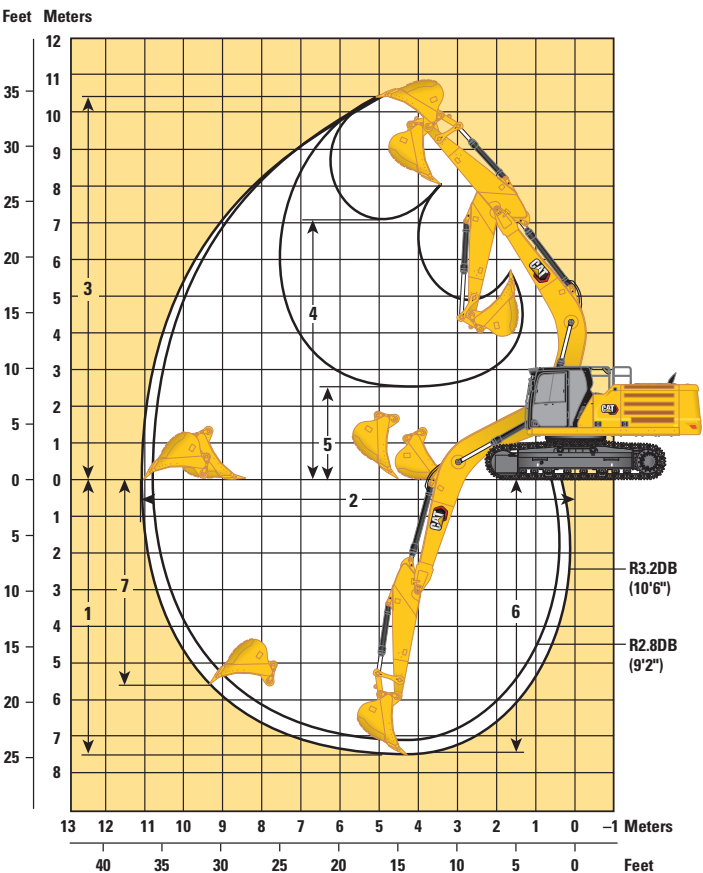
Bucket Tip Radius

1760 mm	5.8 ft	1760 mm	5.8 ft
---------	--------	---------	--------

336 Hydraulic Excavator Specifications

Working Ranges and Forces

All dimensions are approximate and may vary depending on bucket selection.



Boom Option	HD Reach Boom 6.5 m (21'4")			
Stick Options	HD Reach Stick			
	R3.2DB (10'6")		R2.8DB (9'2")	
1 Maximum Digging Depth	7520 mm	24.7 ft	7120 mm	23.4 ft
2 Maximum Reach at Ground Line	11 050 mm	36.3 ft	10 750 mm	35.3 ft
3 Maximum Cutting Height	10 300 mm	33.8 ft	10 360 mm	34.0 ft
4 Maximum Loading Height	7080 mm	23.2 ft	7080 mm	23.2 ft
5 Minimum Loading Height	2580 mm	8.5 ft	2980 mm	9.8 ft
6 Maximum Depth Cut for 2440 mm (8'0") Level Bottom	7360 mm	24 ft	6950 mm	23 ft
7 Maximum Vertical Wall Digging Depth	5660 mm	18.6 ft	5620 mm	18.4 ft
Bucket Digging Force (ISO)	211 kN	47,460 lbf	211 kN	47,460 lbf
Stick Digging Force (ISO)	167 kN	37,430 lbf	185 kN	41,630 lbf
Bucket Type	HD		HD	
Bucket Capacity	1.88 m ³	2.46 yd ³	1.88 m ³	2.46 yd ³
Bucket Tip Radius	1760 mm	5.8 ft	1760 mm	5.8 ft

336 Hydraulic Excavator Specifications

Bucket Specifications and Compatibility

	Linkage	Width		Capacity		Weight		Fill	6.8 mt (14,991 lb) Counterweight		7.56 mt (16,667 lb) Counterweight		
		mm	in	m³	yd³	kg	lb		%	HD Reach Boom			
										HD R2.8 (9'2")	HD R3.2 (10'6")	HD R2.8 (9'2")	HD R3.2 (10'6")
Pin-On (No Quick Coupler)													
Heavy Duty	DB	1400	55	1.64	2.14	1510	3,329	100	●	●	●	●	
	DB	1466	58	1.76	2.30	1557	3,324	100	●	⊙	●	●	
	DB	1500	61	1.88	2.46	1608	3,545	100	⊙	⊙	●	⊙	
	DB	1650	67	2.12	2.77	1706	3,761	100	⊖	⊖	⊙	⊖	
Severe Duty Spade	DB	1550	61	1.90	2.48	1864	4,109	90	⊙	⊙	●	●	
Severe Duty	DB	1400	56	1.64	2.14	1720	3,791	90	●	●	●	●	
	DB	1700	67	2.12	2.77	2004	4,417	90	⊖	⊖	⊙	⊙	
	DB	1850	73	2.31	3.02	2097	4,622	90	⊖	○	⊖	⊖	
Severe Duty Extreme	DB	1700	67	2.05	2.68	2058	4,537	90	⊙	⊖	⊙	⊙	
Extreme Duty	DB	1400	56	1.64	2.14	1899	4,186	90	●	●	●	●	
Maximum load with pin-on (payload + bucket)								kg	5220	4915	5620	5295	
								lb	11,508	10,836	12,390	11,673	
With Cat Pin Grabber Coupler													
Heavy Duty	DB	1400	55	1.64	2.14	1510	3,329	100	⊙	⊖	⊙	⊖	
	DB	1466	58	1.76	2.30	1557	3,324	100	⊖	⊖	⊙	⊖	
	DB	1500	61	1.88	2.46	1608	3,545	100	⊖	○	⊖	○	
	DB	1650	67	2.12	2.77	1706	3,761	100	○	○	○	○	
Severe Duty Spade	DB	1550	61	1.90	2.48	1864	4,109	90	⊖	○	⊖	○	
Severe Duty	DB	1400	56	1.64	2.14	1720	3,791	90	⊙	⊖	⊙	⊙	
	DB	1700	67	2.12	2.77	2004	4,417	90	○	○	○	○	
	DB	1850	73	2.31	3.02	2097	4,622	90	○	◇	○	◇	
Severe Duty Extreme	DB	1700	67	2.05	2.68	2058	4,537	90	○	○	○	○	
Extreme Duty	DB	1400	56	1.64	2.14	1899	4,186	90	⊙	⊖	⊙	⊖	
Maximum load with coupler (payload + bucket)								kg	4524	4219	4569	4249	
								lb	9,974	9,302	10,073	9,367	

The above loads are in compliance with hydraulic excavator standard EN474-5:2006 + A3:2013, they do not exceed 87% of hydraulic lifting capacity or 75% of tipping capacity with front linkage fully extended at ground line with bucket curled.

Capacity based on ISO 7451:2007.

Bucket weight with General Duty tips.

Maximum Material Density:

- 2100 kg/m³ (3,500 lb/yd³)
- ⊙ 1800 kg/m³ (3,000 lb/yd³)
- ⊖ 1500 kg/m³ (2,500 lb/yd³)
- 1200 kg/m³ (2,000 lb/yd³)
- ◇ 900 kg/m³ (1,500 lb/yd³)

Caterpillar recommends using appropriate work tools to maximize the value customers receive from our products. Use of work tools, including buckets, which are outside of Caterpillar's recommendations or specifications for weight, dimensions, flows, pressures, etc. may result in less-than-optimal performance, including but not limited to reductions in production, stability, reliability, and component durability. Improper use of a work tool resulting in sweeping, prying, twisting and/or catching of heavy loads will reduce the life of the boom and stick.

336 Hydraulic Excavator Specifications

Attachments Offering Guide

Not all Attachments are available in all regions. Consult your Cat dealer for configurations available in your region.

☒ Match

PIN-ON ATTACHMENTS

Undercarriage		L		L	
Counterweight		6.8 mt (14,991 lb)		7.56 mt (16,667 lb)	
Boom Type		Reach HD		Reach HD	
Stick Length		2.8 m HD (9'2")	3.2 m HD (10'6")	2.8 m HD (9'2")	3.2 m HD (10'6")
Hydraulic Hammers	H140 GC	✓	✓	✓	✓
	H140 GC S	✓	✓	✓	✓
	H160 GC	✓	✓	✓	✓
	H160 GC S	✓	✓	✓	✓
Compactors (Vibratory Plate)	CVP110	✓	✓	✓	✓

CAT PIN GRABBER COUPLER ATTACHMENTS

Undercarriage		L		L	
Counterweight		6.8 mt (14,991 lb)		7.56 mt (16,667 lb)	
Boom Type		Reach HD		Reach HD	
Stick Length		2.8 m HD (9'2")	3.2 m HD (10'6")	2.8 m HD (9'2")	3.2 m HD (10'6")
Hydraulic Hammers	H140 GC	✓	✓	✓	✓
	H140 GC S	✓	✓	✓	✓
	H160 GC	✓	✓	✓	✓
	H160 GC S	✓	✓	✓	✓
Compactors (Vibratory Plate)	CVP110	✓	✓	✓	✓

Standard and Optional Equipment

Standard and optional equipment may vary. Consult your Cat dealer for details.

	Standard	Optional		Standard	Optional
CAB			ENGINE		
ROPS, standard sound suppression	✓		Three selectable modes: Power, Smart, Eco	✓	
High-resolution 203 mm (8") LCD touchscreen monitor	✓		Cold start block heaters		✓
High-resolution 203 mm (8") LCD touchscreen monitor + additional monitor (only for use with Cat GRADE with Advanced 2D or Cat GRADE with 3D)		✓	Automatic engine speed control	✓	
Automatic bi-level air conditioner	✓		Up to 3300 m (10,830 ft) altitude capability	✓	
Jog dial and shortcut keys for monitor control	✓		52° C (126° F) high-ambient cooling capacity	✓	
Keyless push-to-start engine control	✓		Hydraulic reverse fan		✓
Height-adjustable console, three steps with tool	✓		–18° C (0° F) cold start capability	✓	
Mechanically adjustable seat suspension	✓		–32° C (–25° F) cold start capability		✓
51 mm (2") seat belt	✓		Double element air filter with integrated precleaner	✓	
Fixed left-side console	✓		Dual stage four micron main filter and 10 micron primary filter with water separator and water separator indicator switch	✓	
Bluetooth integrated radio with USB ports	✓		Biodiesel capability up to B20	✓	
12V DC outlets	✓		Remote disable	✓	
Document storage	✓		HYDRAULIC SYSTEM		
Cup and bottle holders	✓		Boom and stick regeneration circuit	✓	
Openable two-piece front window	✓		Electronic main control valve	✓	
Radial wiper with washer	✓		Heavy lift mode	✓	
Radial lower wiper		✓	Automatic hydraulic oil warm up	✓	
Openable steel hatch	✓		Bio hydraulic oil capability	✓	
LED dome light	✓		Reverse swing damping valve	✓	
Floor welcome light	✓		Automatic swing parking brake	✓	
Falling object guard system (not compatible with cab light cover, rain protector)		✓	High performance hydraulic return filter	✓	
Rear window emergency exit	✓		Two speed travel	✓	
Washable floor mat	✓		Single one-way auxiliary circuit		✓
Beacon ready	✓		Combined two-way auxiliary circuit		✓
			Combined two-way auxiliary circuit with hammer return filter		✓
			Medium-pressure auxiliary circuit		✓
			Quick coupler circuit for Cat Pin Grabber		✓

(continued on next page)

336 Standard and Optional Equipment

Standard and Optional Equipment *(continued)*

Standard and optional equipment may vary. Consult your Cat dealer for details.

	Standard	Optional		Standard	Optional
UNDERCARRIAGE AND STRUCTURES			ELECTRICAL SYSTEM		
Long undercarriage	✓		Maintenance-free 1,000 CCA batteries (×2)	✓	
Towing eye on base frame	✓		Centralized electrical disconnect switch	✓	
Full-length track guiding guards		✓	LED chassis light, LH and RH boom lights, cab lights	✓	
Segmented track guiding guards		✓	Premium surround working lights		✓
Swivel guard	✓		CAT TECHNOLOGY		
HD bottom guard	✓		Cat Product Link™	✓	
HD travel motor guard	✓		Work tool recognition	✓	
Bucket cylinder guard		✓	Work tool tracking*	✓	
Grease lubricated track	✓		Laser catcher		✓
HD swing frame		✓	Cat GRADE with 2D and offset memory	✓	
HD swing bearing		✓	Cat GRADE with Advanced 2D		✓
Base frame with HD rollers		✓	Cat GRADE with 3D connectivity: – Virtual Reference Station** – Internet Base Service Station** – Trimble Connected Community**		✓
6.8 mt (14,991 lb) counterweight		✓	Cat Assist: – Grade Assist – Boom Assist – Bucket Assist – Swing Assist – Lift Assist	✓	
7.56 mt (16,667 lb) counterweight		✓	Cat PAYLOAD: – Static weigh – Semiauto calibration – Payload/cycle information – USB reporting capability	✓	
600 mm (24") triple grouser track shoes		✓	2D E-Fence: – E-ceiling – E-floor – E-swing – E-wall – E-cab avoidance	✓	
600 mm (24") HD triple grouser track shoes		✓	Auto hammer stop	✓	
600 mm (24") double grouser track shoes		✓	Remote Services capability	✓	
700 mm (28") triple grouser track shoes		✓	Auto Dig Boost	✓	
BOOMS, STICKS AND LINKAGES					
6.5 m (21'4") HD Reach boom	✓				
2.8 m (9'2") HD stick		✓			
3.2 m (10'6") HD stick		✓			
Bucket linkage, DB family without lifting eye, Cat GRADE		✓			

*Paired with PL161 attachment locator.

**Subscription required.

(continued on next page)

336 Standard and Optional Equipment

Standard and Optional Equipment *(continued)*

Standard and optional equipment may vary. Consult your Cat dealer for details.

	Standard	Optional		Standard	Optional
SERVICE AND MAINTENANCE			SAFETY AND SECURITY		
Grouped location of engine oil and fuel filters	✓		Caterpillar One Key security system	✓	
Scheduled Oil Sampling (S·O·S SM) ports	✓		Lockable external tool/storage box	✓	
QuickEvac TM maintenance ready		✓	Lockable door, fuel, and hydraulic tank locks	✓	
Electric refueling pump with automatic shutoff		✓	Lockable fuel drain compartment	✓	
			Service platform with anti-skid plate and recessed bolts	✓	
			RH handrail and hand hold	✓	
			Signaling/warning horn	✓	
			Ground-level secondary engine shutoff switch	✓	
			Rearview camera	✓	
			360° visibility		✓

336 Attachments

Dealer Installed Kit and Attachments

Attachments may vary. Consult your Cat dealer for details.

CAB

- Radial lower wiper
- Polycarbonate roof hatch
- LH/RH electrical pedal for tool control
- Rain protector plus cab light cover

SAFETY AND SECURITY

- Bluetooth[®] key fob

GUARDS

- Falling object guard system (not compatible with cab light cover, rain protector)
- Mesh guard full front (not compatible with cab light cover, rain protector)
- Mesh guard lower half front
- Full protecting vandalism guard

For more complete information on Cat products, dealer services, and industry solutions, visit us on the web at www.cat.com

© 2020 Caterpillar
All rights reserved

Materials and specifications are subject to change without notice. Featured machines in photos may include additional equipment. See your Cat dealer for available options.

CAT, CATERPILLAR, LET'S DO THE WORK, their respective logos, "Caterpillar Corporate Yellow," the "Power Edge" and Cat "Modern Hex" trade dress as well as corporate and product identity used herein, are trademarks of Caterpillar and may not be used without permission.

AEXQ2360-03 (08-2020)
Replaces AEXQ2360-02
Build Number: 07C
(China)

