

Cat® 3516B

Dynamic Gas Blending™ (DGB™) Generator Sets

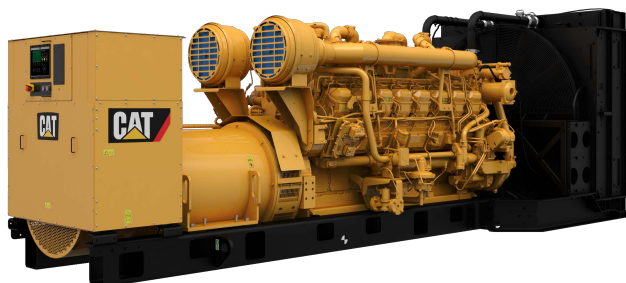


Image shown may not reflect actual configuration

Bore – mm (in)	170 (6.69)
Stroke – mm (in)	215 (8.46)
Displacement – L (in ³)	78 (4764.73)
Compression Ratio	15.5:1
Aspiration	TA
Fuel System	EUI
Governor Type	ADEM™ A4

Prime 50 Hz kVA (ekW)	Continuous 50 Hz kVA (ekW)	Emissions Performance
2275 (1820)	2000 (1600)	Optimized for Low Fuel Consumption

Standard Features

Dynamic Gas Blending™ (DGB™) System

- DGB system automatically activates when gas supply is detected
- Reduces diesel consumption by up to 70% using gas substitution while maintaining safe engine operation
- Control system enables maximum substitution over the widest load range in the industry
- Maintains traditional diesel generator set power and transient response performance
- Accepts a wide range of gas quality and automatically adjusts to fuel quality changes, eliminating the need for field calibration
- Maintains existing diesel maintenance and overhaul intervals

Cat® Diesel Engine

- Designed and optimized for low fuel consumption
- Reliable performance proven in thousands of applications worldwide

Generator Set Package

- Accepts 100% block load in one step and meets other NFPA 110 loading requirements
- Conforms to ISO 8528-5 G2 load acceptance requirements
- Reliability verified through torsional vibration, fuel consumption, oil consumption, transient performance, and endurance testing

Alternators

- Superior motor starting capability minimizes need for oversizing generator
- Designed to match performance and output characteristics of Cat diesel engines

Cooling System

- Cooling systems available to operate in ambient temperatures up to 47°C (117°F)
- Tested to ensure proper generator set cooling

EMCP 4 Control Panels

- EMCP 4.3/4.4 control panel is the single-point interface for the engine, generator, and DGB functions
- User-friendly interface and navigation
- Scalable system to meet a wide range of installation requirements
- Expansion modules and site specific programming for specific customer requirements

Warranty

- 24 months/1000-hour warranty for standby and mission critical ratings
- 12 months/unlimited hour warranty for prime and continuous ratings
- Extended service protection is available to provide extended coverage options

Worldwide Product Support

- Cat dealers have over 1,800 dealer branch stores operating in 200 countries
- Your local Cat dealer provides extensive post-sale support, including maintenance and repair agreements

Financing

- Caterpillar offers an array of financial products to help you succeed through financial service excellence
- Options include loans, finance lease, operating lease, working capital, and revolving line of credit
- Contact your local Cat dealer for availability in your region

Optional Equipment

Engine

Air Cleaner

- Single element
- Dual element

Muffler

- Industrial grade (15 dB)

Starting

- Standard batteries
- Oversized batteries
- Standard electric starter(s)
- Heavy duty electric starter(s)
- Air starter(s)
- Jacket water heater

Alternator

Output voltage

- 380V 6600V
- 400V 6900V
- 415V 10000V
- 3300V 10500V
- 6300V 11000V

Temperature Rise (over 40°C ambient)

- 150°C
- 125°C/130°C
- 105°C
- 80°C

Winding type

- Random wound
- Form wound

Excitation

- Internal excitation (IE)
- Permanent magnet (PM)

Attachments

- Anti-condensation heater
- Stator and bearing temperature monitoring and protection

Power Termination

Type

- Bus bar
- Circuit breaker
- 1600A 2000A
- 2500A 3000A
- 3200A 4000A
- 5000A
- UL IEC
- 3-pole 4-pole
- Manually operated
- Electrically operated

Trip Unit

- LSI LSI-G
- LSI-G-P

Control System

Controller

- EMCP 4.3
- EMCP 4.4

Attachments

- Local annunciator module
- Remote annunciator module
- Expansion I/O module
- Remote monitoring software

Charging

- Battery charger – 10A
- Battery charger – 20A
- Battery charger – 35A

Vibration Isolators

- Rubber
- Spring
- Seismic rated

Cat Connect

Connectivity

- Ethernet
- Cellular
- Satellite

Extended Service Options

Terms

- 2 year (prime)
- 3 year
- 5 year
- 10 year

Coverage

- Silver
- Gold
- Platinum
- Platinum Plus

Ancillary Equipment

- Automatic transfer switch (ATS)
- Uninterruptible power supply (UPS)
- Paralleling switchgear
- Paralleling controls

Certifications

- IBC Seismic Certification
- EU Declaration of Conformity
- EEC Declaration of Conformity

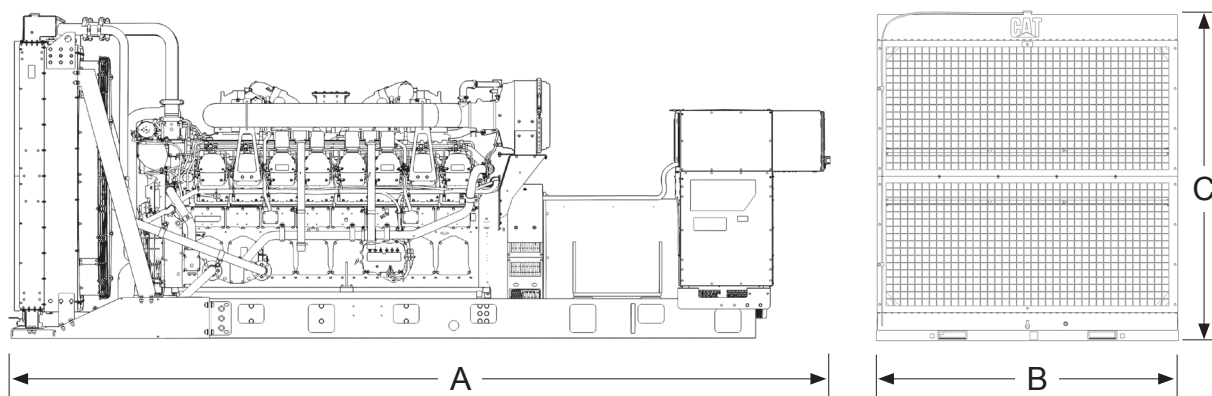
Note: Some options may not be available on all models. Certifications may not be available with all model configurations. Consult factory for availability.

Package Performance

Low Fuel Consumption (60°C SCAC) based on 100% Diesel, except*

Performance	Prime		Continuous	
Frequency	50 Hz		50 Hz	
Genset power rating with fan	1820 ekW		1600 ekW	
Genset power rating with fan @ 0.8 power factor	2275 kVA		2000 kVA	
Emissions	Low Fuel		Low Fuel	
Performance number	EM2608-00		EM2610-00	
Aftercooler (separate circuit) – °C (°F)	60	(140)	60	(140)
Fuel Consumption				
100% load with fan – L/hr (gal/hr)	460.6	(121.7)	400.8	(105.9)
75% load with fan – L/hr (gal/hr)	340.7	(90.0)	301.3	(79.6)
50% load with fan – L/hr (gal/hr)	236.4	(62.4)	211.7	(55.9)
25% load with fan – L/hr (gal/hr)	136.4	(36.0)	124.1	(32.8)
*Gas Fuel Flow (Pressure range before regulating: 0.83-6.89 bar (12-100 psi))				
Maximum @ 85 MN – MJ/hr (Btu/min)	9463	(149487)	9284	(146659)
Cooling System				
Radiator air flow restriction (system) – kPa (in. water)	0.12	(0.48)	0.12	(0.48)
Radiator air flow – m ³ /min (cfm)	2254	(79599)	2254	(79599)
Engine coolant capacity – L (gal)	233	(61.6)	233	(61.6)
Radiator coolant capacity – L (gal)	131	(34.6)	131	(34.6)
Total coolant capacity – L (gal)	364	(96.2)	364	(96.2)
Inlet Air				
Combustion air inlet flow rate – m ³ /min (cfm)	147.5	(5208.3)	133.7	(4721.1)
Exhaust System				
Exhaust stack gas temperature – °C (°F)	489.0	(912.2)	467.8	(874.0)
Exhaust gas flow rate – m ³ /min (cfm)	395.4	(13961.6)	348.1	(12291.9)
Exhaust system backpressure (maximum allowable) – kPa (in. water)	6.7	(27.0)	6.7	(27.0)
Heat Rejection				
Heat rejection to jacket water – kW (Btu/min)	639	(36339)	583	(33155)
Heat rejection to exhaust (total) – kW (Btu/min)	1775	(100941)	1548	(88035)
Heat rejection to aftercooler – kW (Btu/min)	388	(22065)	309	(17573)
Heat rejection to atmosphere from engine – kW (Btu/min)	144	(8189)	135	(7677)
Heat rejection from alternator – kW (Btu/min)	83	(4713)	72	(4093)
Emissions (Nominal)				
NOx mg/Nm ³ (g/hp-h)	3066.9	(6.28)	3249.6	(6.57)
CO mg/Nm ³ (g/hp-h)	209.8	(0.43)	109.1	(0.22)
HC mg/Nm ³ (g/hp-h)	67.7	(0.14)	74.2	(0.15)
PM mg/Nm ³ (g/hp-h)	19.5	(0.04)	13.1	(0.03)
Emissions (Potential Site Variation)				
NOx mg/Nm ³ (g/hp-h)	3680.3	(7.54)	3899.6	(7.88)
CO mg/Nm ³ (g/hp-h)	377.6	(0.77)	196.4	(0.40)
HC mg/Nm ³ (g/hp-h)	90.0	(0.18)	98.7	(0.20)
PM mg/Nm ³ (g/hp-h)	27.3	(0.06)	18.3	(0.04)

Weights and Dimensions



Dim "A" mm (in)	Dim "B" mm (in)	Dim "C" mm (in)	Dry Weight kg (lb)
7416 (292.0)	2286 (90.0)	2360 (92.9)	16 490 (36,280)

Note: For reference only. Do not use for installation design. Contact your local Cat dealer for precise weights and dimensions.

Ratings Definitions

Prime

Output available with varying load for an unlimited time. Average power output is 70% of the prime power rating. Typical peak demand is 100% of prime rated kW with 10% overload capability for emergency use for a maximum of 1 hour in 12. Overload operation cannot exceed 25 hours per year.

Continuous

Output available with non-varying load for an unlimited time. Average power output is 70-100% of the continuous power rating. Typical peak demand is 100% of continuous rated kW for 100% of the operating hours.

Applicable Codes and Standards

AS1359, CSA C22.2 No100-04, UL142, UL489, UL869, UL2200, NFPA37, NFPA70, NFPA99, NFPA110, IBC, IEC60034-1, ISO3046, ISO8528, NEMA MG1-22, NEMA MG1-33, 2014/35/EU, 2006/42/EC, 2014/30/EU.

Note: Codes may not be available in all model configurations. Please consult your local Cat dealer for availability.

Data Center Applications

Tier III/Tier IV compliant per Uptime Institute requirements. ANSI/TIA-942 compliant for Rated-1 through Rated-4 data centers.

Fuel Rates

Diesel fuel rates are based on fuel oil of 35° API [16°C (60°F)] gravity having an LHV of 42 780 kJ/kg (18,390 Btu/lb) when used at 29°C (85°F) and weighing 838.9 g/liter (7.001 lbs/U.S. gal.)

www.cat.com/electricpower

©2018 Caterpillar
All rights reserved.

Materials and specifications are subject to change without notice. The International System of Units (SI) is used in this publication.

CAT, CATERPILLAR, their respective logos, ADEM, "Caterpillar Yellow", the "Power Edge" trade dress as well as corporate and product identity used herein, are trademarks of Caterpillar and may not be used without permission.