

986K

Block Handler



Engine

Engine Model

Cat® C15 ACERT™

Emissions

U.S. EPA Tier 4 Final/EU Stage IV,
or China Nonroad Stage III and
Brazil MAR-1 and equivalent to
U.S. Tier 3 and EU Stage IIIA

Gross Power – ISO 14396

335 kW 449 hp

Buckets

Bucket Capacities

5.4 m³

7 yd³

Operating Specifications

Operating Weight

52 929 kg

116,688 lb

Lower your cost per ton with built-in durability.

Contents

- Structures.....4
- Power Train.....6
- Hydraulics8
- Operator Station.....10
- Technology Solutions12
- Safety13
- Serviceability14
- Customer Support.....14
- Sustainability15
- Designed for Block Handling16
- Cat Block Handling Tools.....18
- Specifications.....19
- Standard Equipment.....24
- Optional Equipment.....25
- Mandatory Attachments.....26
- Notes.....27





Cat Large Wheel Loaders are designed with durability built in, ensuring maximum availability through multiple life cycles. With optimized performance and simplified serviceability, our machines allow you to move more material efficiently and safely at a lower cost per ton.

The new 986K continues the legacy of durability, performance, safety, operator comfort, serviceability and sustainability.

Structures

Designed for the toughest conditions.



Lift Arms

Your key to maximum uptime and productivity is our field-proven lift arms.

- Excellent visibility to the bucket edges and work area through a Z-bar design.
- High load stresses are absorbed by the solid steel lift arms.
- Enhance strength in key pin areas through the use of one piece castings.





Robust Structures

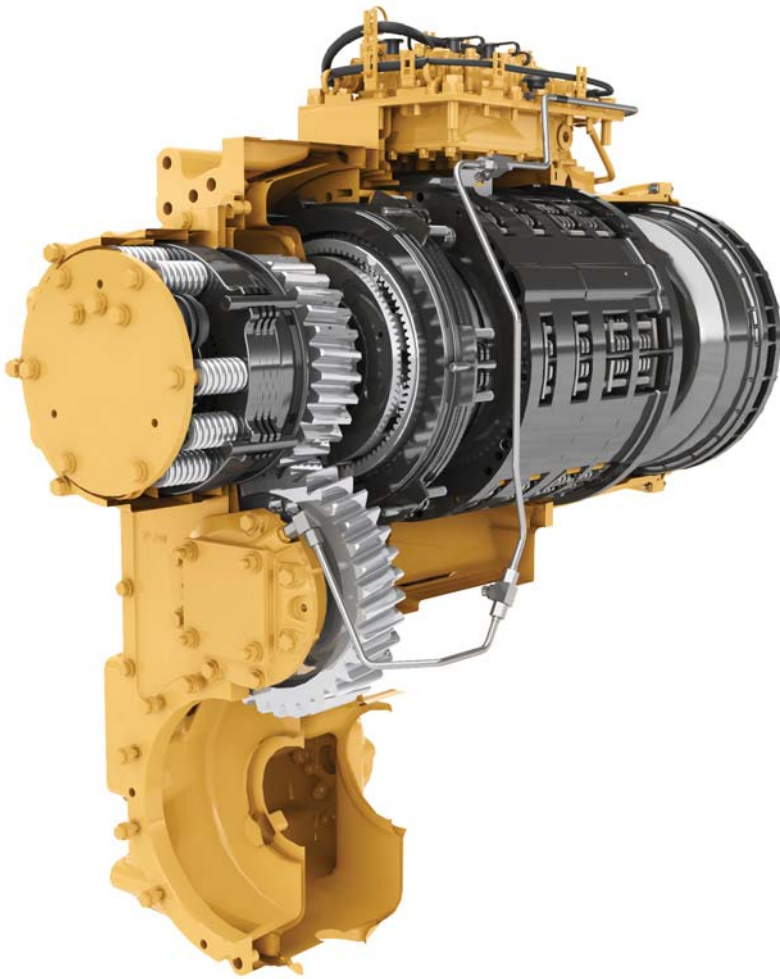
Your bottom line is improved by highly durable structures that achieve multiple life cycles and withstand the toughest loading conditions.

- Full box-section rear frame resists torsional shock and twisting forces.
- Heavy-duty steering cylinder mounts efficiently transmit loads into the frame.
- Cast axle pivot mounting areas better disperse stress loads for increased structural integrity.



Front Linkage

To ensure long life and reliability, the linkage pin joints feature a greased pin design with optional auto lube system.



Cat® Planetary Powershift Transmission

Building your success begins with a best-in-class transmission designed specifically for mining applications.

- Consistent, smooth shifting and efficiency through integrated electronic controls.
- Heat treated gears and shafts extend component life and maximize reliability.
- Four forward and four reverse speeds to match your application.

Cat C15 ACERT Engine

Durability and efficiency at the heart of your 986K comes from the Cat C15 ACERT engine. Optimum performance is built in to this 6 cylinder turbocharged engine.

- Meets Tier 4 Final/Stage IV, or China Nonroad Stage III and Brazil MAR-1 emission standards and equivalent to Tier 3 and Stage IIIA.
- Mechanically Actuated Electronic Unit Injection (MEUI™) gives the C15 ACERT complete control over injection timing, duration and pressure.
- The Advanced Diesel Engine Management (ADEM™) A4 electronic control module manages fuel delivery to optimize performance and provide quick engine response.





Power Train

Move material more efficiently with improved power and control.

Transmission Neutralizer Pedal

- Extends service brake life by neutralizing transmission as service brakes are applied.
 - Allows full power to implement system while the machine is stationary during truck loading.
- 1 **Set Point for Neutralization** – Start of service brake pressure modulation
 - 2 **Full Pedal Travel** – Maximum brake pressure



Hydraulics

Productivity enabling you to move more and make more.



Load Sense Hydraulics

Increase efficiency through our Load Sense Hydraulic System. Load sense hydraulics maximize performance by directing hydraulic fluid flow through implement and steering system only when needed.

- Lowered fuel consumption.
- Consistent performance and efficiency with lower system heat.

Electro Hydraulic Controls

Operators increase productivity with our responsive implements feature.

- Operate comfortably through electronically controlled hydraulic cylinder stops.
- Handle easy-to-use soft detent controls.
- Conveniently set automatic implement kickouts from inside the cab.



Steering System

Confident loader operation starts with precise machine control enabled by the 986K's load sensing hydraulic steering system.

- Increase efficiency with our variable displacement piston pumps.
- Achieve precise positioning for easy loading in tight areas with 35 degrees of steering articulation.
- Enhance operator comfort with integrated steering and transmission control functions.

Filtration System

Benefit from extended performance and reliability of your hydraulic system with our advanced filtration system.

- Hydraulic oil cooler return filter.
- Pilot filter.
- Return and case drain screens inside hydraulic tank.
- Axle oil cooler screens if equipped.





Your operators can work more efficiently and stay comfortable with our customer-inspired cab features.

Entry and Exit

Enter and exit the cab easily and safely with these newly designed, ergonomic features.

- Fold up STIC™ steer/armrest.
- Reduced access stairway angles.
- Standard stairway lighting.

Cat Comfort Series III Seat

Enhance comfort and helps reduce operator fatigue with Cat Comfort Series III seat.

- Mid back design and extra thick, contoured cushions.
- Air suspension system.
- Easy-to-reach seat levers and controls for six way adjustments.
- Seat-mounted implement pod and STIC steer that moves with the seat.
- 76 mm (3 in) wide retractable seat belt.
- Optional 4-point seat belt.

Control Panel

Ergonomic placement of switches and information display keep your operators comfortable all day every day.

- Large backlit membrane switches feature LED activation indicators.
- Switches feature ISO symbols for quick function identification.
- Two position rocker switch activates the electro hydraulic park brake.





Operator Station

Best-in-Class operator comfort and ergonomics.

Environment

Your operator's productivity is enhanced with our clean, comfortable cab environment.

- Experience reduced vibrations from isolated cab mounts and seat air suspension.
- Maintain desired cab temperature with automatic temperature controls.
- Pressurized cab with filtered air.
- Reduced operator sound levels.
- Convenient floor storage tray/lunch box.



Technology Solutions

Greater productivity through
Integrated Electronic Systems.

Integrated electronics provide flexible levels of information to both the site and the operator. This integration creates a smart machine and more informed operator, maximizing the productivity of both.

Information Display

We have worked hard to help our customers and operators perform at their best through our newly upgraded touch screen information display.

- Intuitive operation and easy navigation with our enhanced user interface.
- Decrease service time by keeping operators informed about machine systems.

Cat Production Measurement

Brings payload weighing to the cab, enabling operators to weight loads on-the-go during loading operations. Loads are weighed as the bucket is raised during the lift cycle – eliminating the need to interrupt the load cycle, improving loading efficiency.

- Operators can view load weights on the information display.
- Instant feedback gives operators the confidence to work more effectively.
- Operators can track recorded weights and cycles using the display.

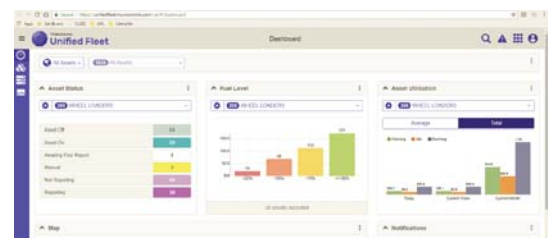
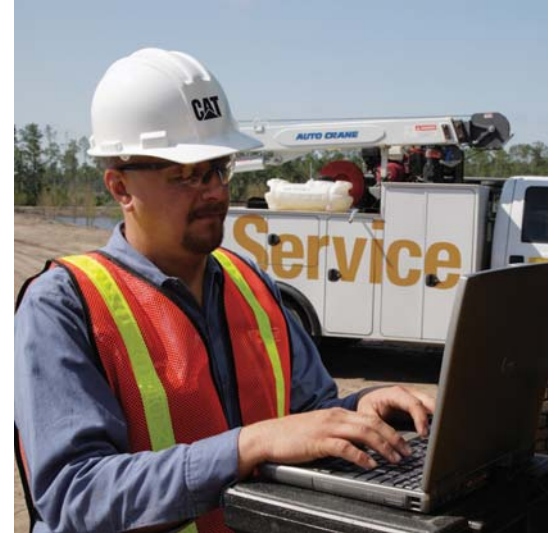
Tire Pressure Monitoring System (TPMS)

Tire pressure monitoring is a fully integrated feature which allows operators to monitor inflation of tires. Available through the Information Display, the operator can quickly see the current pressure settings and temperature of each tire.

Cat Product Link™ Elite

Take the guesswork out of asset management with Product Link remote monitoring.

- Advanced Productivity App (Available as Subscription) helps to optimize worksite operations with detailed payload, cycle, fuel report and remote truck/material list management.
- Remote access to information through the easy-to-use VisionLink® interface.
- Maximize uptime by staying informed on machine systems and diagnostic codes.
- Track machine with utilization, fuel usage, and payload summaries.
- Stay up to date on machine location, service meter hours, and reporting status.



Safety

Making your safety our priority.

We are constantly improving our products in an effort to provide a safe work environment for the operator and those who work on your job site.

Machine Access

- Machines equipped with left and right hand stairs with 45 degree angle enhance safety for operators getting on and off the 986K.
- Continuous walkway with non-skid surfaces are designed into the service areas.
- Maintain three points of contact at all times through ground level or platform accessible service areas.



Visibility

- External guardrail mounted rearview mirrors ensure enhanced visibility for safe operation.
- Cat Vision and optional Cat Detect with radar increase operator awareness around the machine.
- Halogen, HID, or LED lights provide excellent workspace visibility.
- Cab mounted LED warning beacons.

Operator Environment

- Reduced vibrations to the operator with isolated cab mounts and seat mounted implement and steering controls.
- Low interior sound levels.
- Pressurized cab with filtered air.
- Standard 76 mm (3 in) seat belts on the operator seat.

Serviceability

Enabling high uptime by reducing your service time.



We can help you succeed by ensuring your 986K has design features to reduce your downtime.

- Longer service intervals on fluids and filters.
- Safe and convenient service with ground level or platform access and grouped service points.
- Centralized, ground level grease points for injecting grease into linkage pin joints.
- Centralized remote pressure taps for power train components.
- Ground electrical service center with Jump Start Receptacle, Emergency engine shutdown switch, Battery disconnect switch and Circuit breakers.

Customer Support

Your Cat dealers know how to keep your mining machines productive.

Legendary Cat Dealer Support

A valued partner, your Cat dealer is available whenever you need them.

- Preventive maintenance programs and guaranteed maintenance contracts.
- Best-in-class parts availability.
- Improve your efficiency with operator training.
- Genuine Cat Remanufactured parts.



Sustainability

Reducing impact to the environment.



Reducing Impact to the Environment

Sustainability is designed and built into our 986K's features.

- Engine Idle Shutdown can help you save fuel by avoiding unnecessary idling.
- Reduce waste with our maintenance free or extended maintenance batteries.
- To assist with maximizing machine life, Caterpillar provides a number of sustainable options such as our Reman and Certified Rebuild programs. In these programs, reused or remanufactured components can deliver cost savings of 40 to 70 percent, which lowers operating cost while reducing impact to the environment.
- Caterpillar offers retrofit packages to bring new features to older machines, maximizing your resource. And, when you go through the Cat Certified Rebuild program, these retrofit kits are part of the rebuild process.

Counterweight

The 986K Block Handler delivers stability and durability with an optimized counterweight for block handling applications.

Quick Coupler Activation

The Block Handler includes an additional hydraulic valve with the Quick Coupler, allowing the operator to switch work tools and immediately lock the work tool during load and carry applications.

Application Specific Tilt and Lift Cylinders

The 986K Block Handler comes equipped with larger tilt cylinders on the linkage that help improve load control and ensure safe and long lasting operation.

Ride Control

Ride control works by using an accumulator to dampen the linkage motion, acting as a shock absorber. It provides the operator with a smoother ride over rough terrain, enabling a more comfortable ride at higher speeds.

Block Handler Front Linkage

The 986K Block Handler linkage is designed specifically for block handling applications. The linkage layout maximizes machine stability by keeping the payload close to the front tires and pin locations are designed to optimize performance with a quick coupler and fork.



Designed for Block Handling

Unique features for block handling applications.



Optimized Z-bar Linkage

- Linkage layout designed to maximize lift capability in block handling application.
- High load stresses are absorbed by solid steel lift arms.
- Enhanced strength in key pin areas through the use of one piece castings.
- Stress released lift arms increase durability and lengthen time to repair.

Cat Block Handling Tools

Protect your investment.

Block Handling Tools

Caterpillar block handling tools are the solution for handling large block and boulders in the demanding environment of quarry applications. Easy to interchange tools complement each other to provide solutions were mostly needed.



1 – Block Handling Quick Coupler

Can be used on block handling arrangements that have a hydraulic system equipped with a third valve. This quick coupler is designed for optimal utilization of lifting and break-out forces equipped with Caterpillar cylinder, safety valves, pressure and isolation valves, safety covers and lock-indicators. It has enhanced visibility and has been optimized for handling large rocks and blocks.



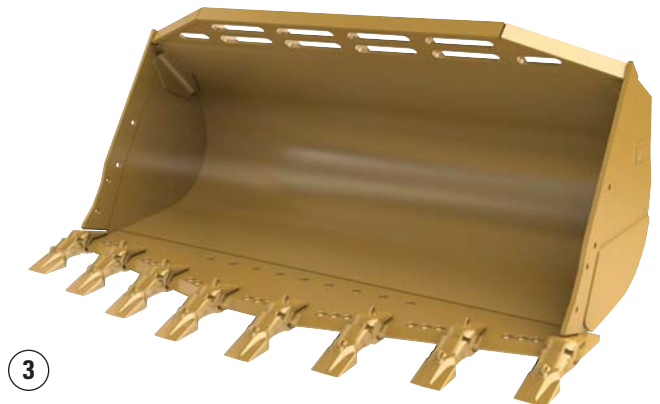
2 – Forks

Heavy-duty pallet forks are engineered to handle weight and load stress when maneuvering and placing blocks in quarry operations. Dual tine forks are designed to allow blocks to be placed close to the machine for greater balance and safe handling.



3 – Rock Buckets

Heavy-duty bucket which offers superior durability, protection and performance in rock and overburden operations in block quarries. It includes large size teeth and segments. Its (high wear resistant) metal shell and bottom offer maximum strength, durability and wear life.



986K Block Handler Specifications

Engine

Engine Model	Cat C15 ACERT	
Emissions	Tier 4 Final/Stage IV, or China Nonroad Stage III and Brazil MAR-1 and equivalent to Tier 3 and Stage IIIA	
Peak Power Speed	1,600 rpm	
SAE J1995	340 kW	456 hp
SAE J1995 (DIN)		462 hp
ISO 14396	335 kW	449 hp
ISO 14396 (DIN)		455 hp
Rated Speed	2,000 rpm	
EEC 80/1269	278 kW	373 hp
EEC 80/1269 (DIN)		378 hp
ISO 9249	278 kW	373 hp
ISO 9249 (DIN)		378 hp
SAE J1349	278 kW	373 hp
SAE J1349 (DIN)		378 hp
Bore	137 mm	5.4 in
Stroke	171.5 mm	6.75 in
Displacement	15.2 L	927 in ³
Peak Torque @ 1,200 rpm – SAE J1995	2411 N·m	1,778 lb-ft
Torque Rise	16%	

Transmission

Transmission Type	Cat Planetary Power Shift	
Forward 1	7.3 km/h	5 mph
Forward 2	12.2 km/h	8 mph
Direct Drive – Forward 2	12.7 km/h	8 mph
Direct Drive – Forward 3	22 km/h	14 mph
Direct Drive – Forward 4	39 km/h	24 mph
Reverse 1	7.6 km/h	5 mph
Reverse 2	13.6 km/h	8 mph
Direct Drive – Reverse 2	14.1 km/h	9 mph
Direct Drive – Reverse 3	25 km/h	16 mph
Direct Drive – Reverse 4	40.8 km/h	25.4 mph

Hydraulic System – Lift/Tilt

Lift/Tilt System – Circuit	Load Sense	
Lift/Tilt System Pumps	2 × 110 cc variable displacement	
Maximum Flow at 2,165 rpm	470 L/min	123 gal/min
Relief Valve Setting – Lift/Tilt	27 900 kPa	4,050 psi
Lift Cylinder – Bore	190 mm	7.5 in
Lift Cylinder – Stroke	1138 mm	45 in
Tilt Cylinder – Bore	170 mm	6.7 in
Tilt Cylinder – Stroke	568 mm	22.4 in

Hydraulic Cycle Time

Rackback	4.5 Seconds
Raise	8.5 Seconds
Dump	3 Seconds
Lower	4.9 Seconds
Lower Float Down	4.3 Seconds
Total Hydraulic Cycle Time	15.8 Seconds

Service Refill Capacities

Fuel Tank	438 L	116 gal
Cooling Systems	100 L	26 gal
Crankcase	34 L	9 gal
Diesel Exhaust Fluid Tank (Tier 4 Final/Stage IV only)	23 L	6 gal
Transmission	75 L	20 gal
Axle Oil		
Differentials and Final Drives – Front	186 L	49 gal
Differentials and Final Drives – Rear	170 L	45 gal
Hydraulic System Factory Fill	330 L	87 gal
Hydraulic System (tank only)	130 L	34 gal

Air Conditioning System

The air conditioning system on this machine contains the fluorinated greenhouse gas refrigerant R134a (Global Warming Potential = 1430). The system contains 1.8 kg of refrigerant which has a CO₂ equivalent of 2.574 metric tonnes.

986K Block Handler Specifications

Axles

Front	Fixed
Rear	Trunnion
Oscillation Angle	±12.5°
Oscillation Angle (chain arrangement)	±8.5°

Brakes

Brakes	ISO 3450:2011
--------	---------------

Hydraulic System – Steering

ISO 5010:2007			
Steering System – Circuit	Load Sense		
Steering System – Pump	Piston, variable displacement		
Maximum Flow @ 1,400 rpm	200 L/min	52 gal/min	
Steering Cutoff Pressure	27 600 kPa	4,000 psi	
Total Steering Angle	70°		

Operator Cab

ROPS/FOPS	ROPS/FOPS meet ISO 3471:2008 (ROPS) and ISO 3449:2005 Level II (FOPS)
-----------	---

Sound Performance

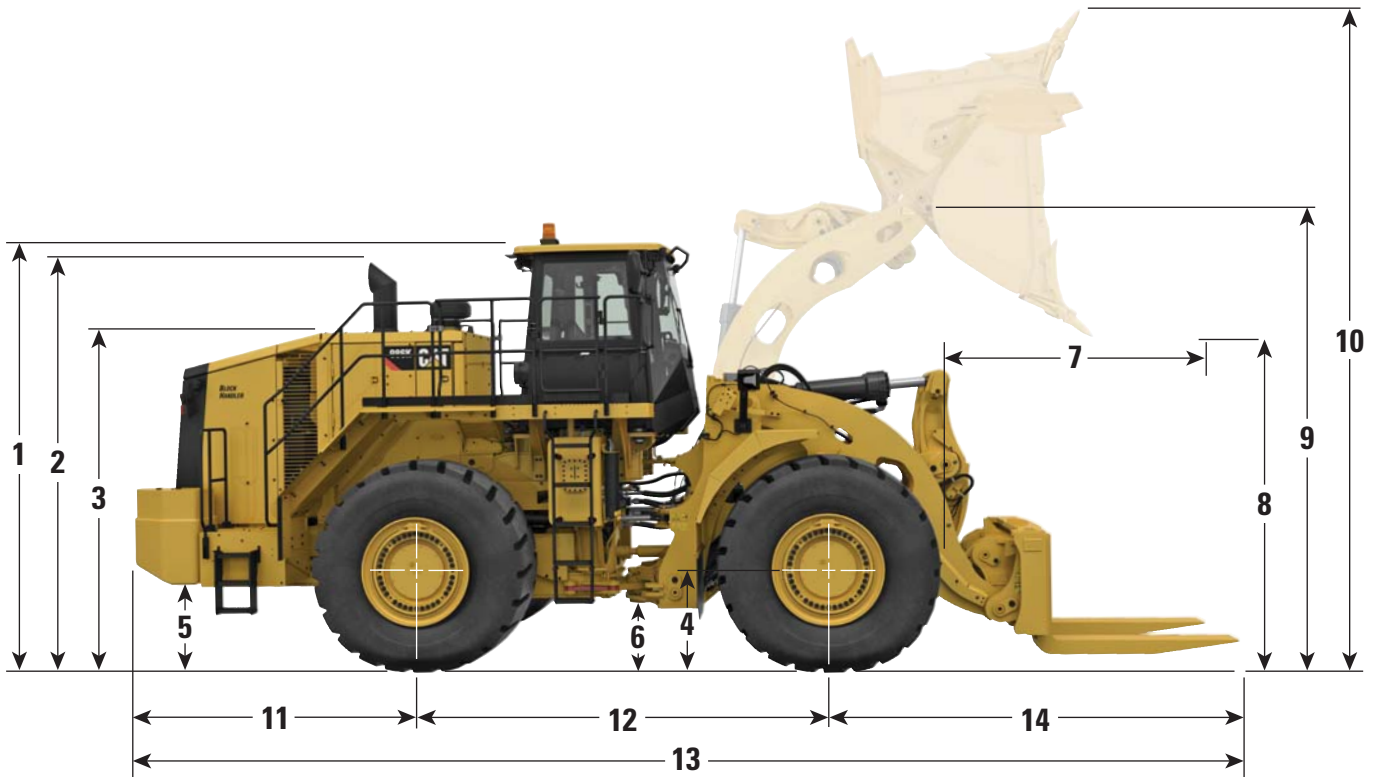
	Standard	Suppression
Operator Sound Level (ISO 6396)	72 dB(A)	72 dB(A)
Machine Sound Level (ISO 6395)	112 dB(A)	110 dB(A)

- The operator sound pressure level was measured according to the test procedures and conditions specified in ISO 6396:2008. The measurement was conducted at 70 percent of the maximum engine cooling fan speed.
- Hearing protection may be needed when the machine is operated with a cab that is not properly maintained or when the doors or windows are open for extended periods or in a noisy environment.
- The machine sound power level was measured according to the test procedures and conditions specified in ISO 6395:2008. The measurement was conducted at 70 percent of the maximum engine cooling fan speed.

986K Block Handler Specifications

Dimensions

All dimensions are approximate.

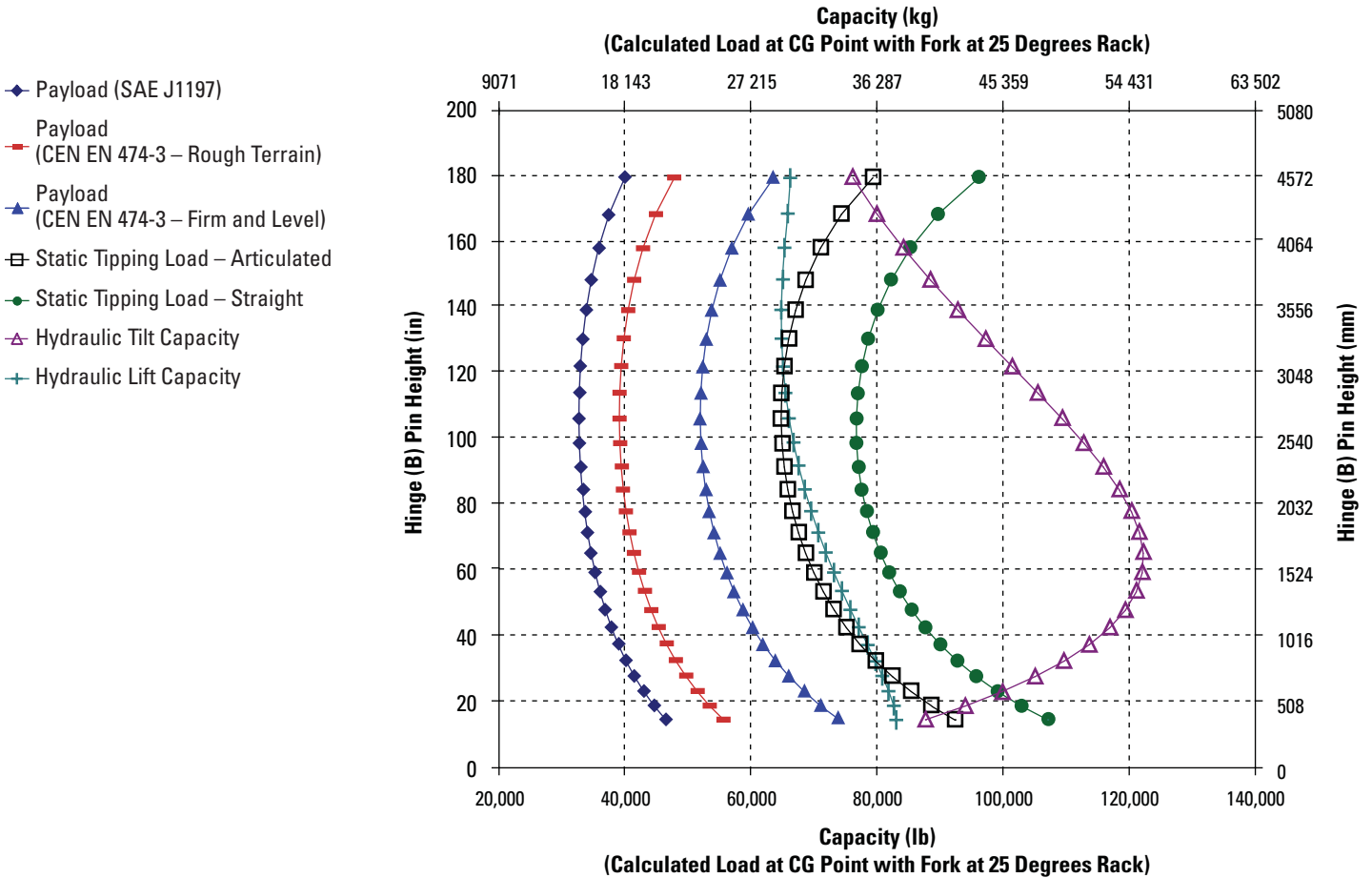


	Quick Coupler and 6.1 m ³ (8.0 yd ³) Bucket		Quick Coupler and Fork	
1 Ground to Top of ROPS	4100 mm	13.5 ft	4100 mm	13.5 ft
2 Ground to Top of Exhaust Stacks	4060 mm	13.3 ft	4060 mm	13.3 ft
3 Ground to Top of Hood	3270 mm	10.7 ft	3270 mm	10.7 ft
4 Ground to Center of Rear Axle	978 mm	3.2 ft	978 mm	3.2 ft
5 Ground to Fuel Tank Clearance	691 mm	2.3 ft	691 mm	2.3 ft
6 Ground to Lower Hitch Clearance	459 mm	1.5 ft	459 mm	1.5 ft
7 Reach at Maximum Lift	2437 mm	8.0 ft	—	—
8 Clearance at Maximum Lift	3259 mm	10.7 ft	—	—
9 B-Pin Height at Maximum Lift	4566 mm	15.0 ft	4566 mm	15.0 ft
10 Maximum Overall Height, Bucket Raised	6359 mm	20.9 ft	—	—
11 Rear Axle Center Line to Bumper	3132 mm	10.3 ft	3132 mm	10.3 ft
12 Wheel Base	3810 mm	12.5 ft	3810 mm	12.5 ft
13 Maximum Overall Length	10 671 mm	35.0 ft	10 776 mm	35.4 ft
14 Front Axle Centerline to Bucket Tip	3729 mm	12.2 ft	3834 mm	12.6 ft

986K Block Handler Specifications

Load Capacity Curves

L5 Tires, Fork at 25 degree Rack Angle, 1795 mm (71") Tine, Block Handler Quick Coupler and Block Handler Fork.



NOTE:

Static tipping loads and operating weight are based on the following loader configuration: L5 Bridgestone bias tires, air conditioning, ride control, power train guard, full fluids, fuel tank, coolant, lubricants, and operator.

Specifications and ratings conform to the following standards: SAE* J1197, SAE J732, CEN** EN 474-3.

The rated operating load for a loader equipped with a pallet fork is determined by:

SAE J1197: 50% of full turn static tipping load or hydraulic limit.

CEN EN 474-3: 60% of full turn static tipping load on rough terrain or hydraulic limit.

CEN EN 474-3: 80% of full turn static tipping load on firm and level ground or hydraulic limit.

*SAE – Society of Automotive Engineers

**CEN – European Committee for Standardization

Operating Specifications

Tires: 35/65-33 SLR: 978 mm (3.2 ft)

Bucket Type		Bucket	Fork
Ground Engaging Tools		Teeth & Segments	
Cutting Edge Type		Spade	
Bucket Part No.		457-8930	418-0070
Struck Capacity	m ³	4.4	
	yd ³	5.8	
Heaped Capacity (rated)	m ³	5.4	
	yd ³	7.0	
Bucket Width	mm	3812	
	ft	12.5	
Dump Clearance at Full Lift and Full Dump Angle (segment)	mm	3355	
	ft	11.0	
Dump Clearance at Full Lift and Full Dump Angle (with teeth)	mm	3259	
	ft	10.7	
Reach at Lift and Full Dump Angle (segment)	mm	2261	
	ft	7.4	
Reach at Lift and Full Dump Angle (with teeth)	mm	2438	
	ft	8.0	
Reach with Lift Arms Horizontal and Bucket Level (teeth)	mm	3518	
	ft	11.5	
Digging Depth (segment)	mm	103	
	in	4	
Overall Length (bucket ground level)	mm	10 671	10 776
	ft	35.0	35.4
Overall Height with Bucket at Full Raise	mm	6359	
	ft	20.9	
Loader Clearance Turning Radius (SAE J1197 carry)	mm	8628	7736
	ft	28.3	25.4
Full Dump Angle	deg	-27	
Static Tipping Load Straight (rigid tire)	kg	36 511	35 522
	lb	80,493	78,313
Static Tipping Load Straight (tire squash)	kg	35 541	34 719
	lb	78,354	76,542
Static Tipping Load – Full Turn (articulated 35°) (rigid tire)	kg	31 927	31 322
	lb	70,387	69,053
Static Tipping Load – Full Turn (articulated 35°) (tire squash)	kg	29 711	29 278
	lb	65,501	64,547
Breakout Force	kN	338	
	lbf	76,075	
Operating Weight	kg	52 929	50 688
	lb	116,688	111,748
Weight Distribution at SAE Carry (unloaded) – Front	kg	21 272	17 611
	lb	46,897	38,826
Weight Distribution at SAE Carry (unloaded) – Rear	kg	31 657	33 077
	lb	69,792	72,922

Bridgestone 42 PR bias tires with 6.6 bar (95 psi) pressure.
25 degree fork angle for tipping loads with 418-0070 forks.

986K Standard Equipment

Standard Equipment

Standard equipment may vary. Consult your Cat dealer for details.

ELECTRICAL

- Alarm, back-up
- Alternator, single 145 amp
- Batteries, dry
- Converter, 10/15 amp, 24V to 12V
- Lighting system (halogen, work lights, access and service platform lighting)
- Starting and charging system, 24V
- Starter emergency start receptacle

OPERATOR ENVIRONMENT

- Graphical Information Display, displays real time operating information, performs calibrations and customizes operator settings
- Air conditioner
- Rear vision camera system
- Cat Production Measurement ready
- Cab, sound suppressed and pressurized, integrated rollover protective structure (ROPS/FOPS) radio ready for entertainment, includes antenna, speakers and converter (12-volt 5-amp) and power port
- Controls, lift and tilt function
- Heater, defroster
- Horn, electric
- Instrumentation, gauges
 - Coolant temperature
 - Fuel level
 - DEF level
 - Hydraulic oil temperature
 - Power train oil temperature
- Light, cab, dome
- Lunchbox, beverage holders
- Mirrors, rearview (externally mounted)
- Seat, Cat Comfort (cloth), air suspension, six-way adjustable
- Seat belt minder
- Seat belt, retractable, 76 mm (3 in) wide
- STIC Control System
- UV glass
- Transmission gear indicator
- Wet-Arm wipers/washers (front and rear)
 - Intermittent front and rear wipers
- Lights, directional

POWER TRAIN

- Brakes, oil-cooled, multi-disc, service/secondary
- Case drain screens
- Crankcase guard
- Electro hydraulic parking brake
- Engine, C15 ACERT MEUI diesel, turbocharged/aftercooled
- Ground level engine shutoff
- Turbine precleaner, engine air intake
- Starting aid, ether, automatic
- Torque converter, Neutralizer
- Transmission, planetary powershift, 4F/3R electronic control
- Manual switch and automatic fuel priming

OTHER

- Automatic bucket lift kickout/positioner
- Hydraulically driven demand fan
- Couplings, Cat O-ring face seals
- Doors, service access (locking)
- Ecology drains for engine, radiator, hydraulic tank
- Fuel tank, 535 L (141 gal)
- Hitch, drawbar with pin
- Hoses, Cat XT™
- Hydraulic, steering and brake filtration/screening system
- Cat Clean Emission Module
- Oil sampling valves
- Premixed 50% concentration of extended life coolant with freeze protection to -34° C (-29° F)
- Rear access to cab and service platform
- Steering, load sensing
- Toe kicks
- Vandalism protection caplocks

Optional Equipment

With approximate changes in operating weights, optional equipment may vary. Consult your Cat dealer for specifics.

POWER TRAIN

- -50° C (-58° F) antifreeze
- Engine oil change system, high speed, Wiggins
- Engine block heater 120V or 240V
- High ambient cooling – software
- Cat Production Measurement

MISCELLANEOUS ATTACHMENTS

- Front and rear roading fenders
- Fast fill fuel system (Shaw-Aero)
- Cold Weather Starting (extra two batteries)
- Aggregate Handler
- Wheel chocks

OPERATOR ENVIRONMENT

- Cab powered precleaner
- Cat Detect Vision
- AM/FM/CD/MP3 radio
- Satellite Sirius radio with Bluetooth
- LED warning strobe
- CB radio ready
- Window pull down visor
- Handrail mounted mirrors

986K Mandatory Attachments

Mandatory Attachments

Select one from each group. Mandatory and optional equipment may vary. Consult your Cat dealer for specifics.

LINKAGE

- Standard with two valves
- Standard with three valves
- High Lift with two valves
- High Lift with three valves
- Autolube
- Manual grease pins

ELECTRICAL

- No Product Link
- Product Link (Satellite)
- Product Link (Cellular)
- Product Link (China Only)

STEERING

- Standard steering
- Secondary steering

POWER TRAIN

- Axle oil cooling
- No axle oil cooling
- Standard axles
- Standard fuel lines
- Heated fuel lines
- No engine brake
- Engine brake

LIGHTING

- Standard lighting
- LED lighting

OPERATOR ENVIRONMENT

- No suppression arrangement
- Sound suppression
- Standard seat
- Heated and ventilated seat
- Standard seat belt
- 4 point seat belt
- Standard cab glass
- Rubber mounted cab glass
- Standard mirror
- Rear vision display
- Rear vision display with Cat Detect (Object Detection)

HYDRAULICS

- Ride control
- No ride control
- Standard hydraulic oil
- Fire resistant (EcoSafe) hydraulic oil
- Cold weather hydraulic oil



For more complete information on Cat products, dealer services, and industry solutions, visit us on the web at www.cat.com

AEHQ8125 (05-2018)
(Global except Japan)

© 2018 Caterpillar
All rights reserved

Materials and specifications are subject to change without notice. Featured machines in photos may include additional equipment. See your Cat dealer for available options.

CAT, CATERPILLAR, SAFETY.CAT.COM, their respective logos, "Caterpillar Yellow" and the "Power Edge" trade dress, as well as corporate and product identity used herein, are trademarks of Caterpillar and may not be used without permission.

VisionLink is a trademark of Trimble Navigation Limited, registered in the United States and in other countries.

