



# Cat<sup>®</sup> CW12

## PNEUMATIC COMPACTOR

### Top Features

The CW12 is a 7-wheel pneumatic compactor that weighs in at approximately 8.8 metric tons (19,511 lbs). It has a 2.09 m (82 in) compaction width that excels on chip and seal applications as well as asphalt, and granular materials.

- **Superb Visibility** with an exclusive 360° operating environment that enables the operator to face the direction of travel for better job site awareness. The rotating seat also slides from side to side for optimal wheel edge visibility.
- **Exceptional Control** with hand-wheel steering, touch-pad machine functions, Eco-mode, and automatic speed control help operators perform efficiently. This machine can be equipped with a Cab or ROPS/FOPS.
- **Smooth Operating Powertrain** with C4.4 engine provides 75 kW (100.5 hp) and meets emissions equivalent to U.S. EPA Tier 3, EU Stage IIIA, and China Stage III.
- **Cat Compaction Control** keeps the operator informed for higher performance and efficiency. Keeping track of coverage areas and the number of passes made helps ensure quality results. When working on asphalt, infrared temperature sensors combined with mapping keep the operator informed of when and where optimal temperatures exist.
- **Machine to Machine Communication** provides real time progress of multiple machines. It allows operators to monitor each others rolling pattern and continue the pass where it was left off. The system greatly enhances nighttime operation when low lighting conditions exist.
- **Industry-Leading Water Spray System** features a single fill point, dual water pumps, triple filtration, intermittent operation and high capacity for optimal performance. An optional freeze protection kit offers protection in cold temperatures.

### Specifications

#### Weights

##### Operating Weight – w/ROPS/FOPS/CAB

Standard machine	8850 kg	19,511 lb
Maximum machine	9200 kg	20,282 lb
Load per wheel - front	1.26 mt	2,778 lb
Load per wheel - rear	1.26 mt	2,778 lb

##### Operating Weight – w/ROPS

Standard machine	8600 kg	18,960 lb
Maximum machine	8940 kg	19,709 lb
Load per wheel - front	1.22 mt	2,690 lb
Load per wheel - rear	1.22 mt	2,690 lb

##### Operating Weight – w/CANOPY

Standard machine	8520 kg	18,783 lb
Maximum machine	8860 kg	19,533 lb
Load per wheel - front	1.21 mt	2,668 lb
Load per wheel - rear	1.21 mt	2,668 lb

##### Operating Weight – NON-ROPS CAB

Standard machine	8750 kg	19,290 lb
Maximum machine	9100 kg	20,062 lb
Load per wheel - front	1.25 mt	2,756 lb
Load per wheel - rear	1.25 mt	2,756 lb

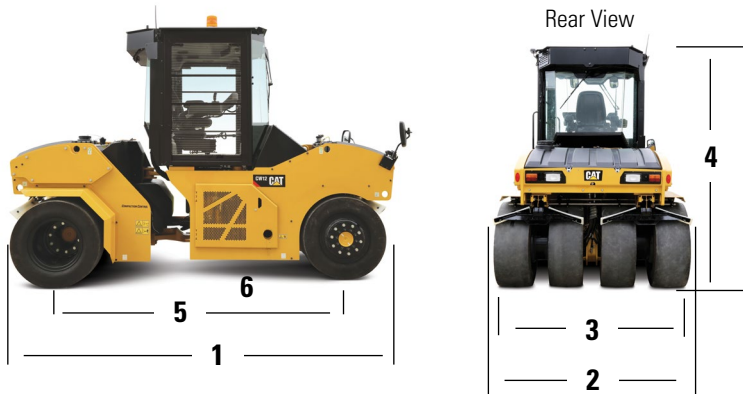
#### Engine – Powertrain

Engine Model	Cat C4.4	
Number of Cylinders	4	
Rated Speed	2200 rpm	
Bore	105 mm	4.1"
Stroke	127 mm	5"
Gross Power: Meets Tier 3, Stage IIIA, China Stage III	75 kW	100.5 hp
Speed Ranges:		
Low	0 - 7 km/hr	4.3 mph
High	0 - 14.5 km/hr	9.0 mph
Gradeability - Theoretical	32%	
Steering (Inside)	4.4 m	(14' 8")
Articulation Angle	35°	
Hitch Oscillation	±6°	



# CW12 Pneumatic Compactor

## Dimensions



<b>1</b> Overall length	4524 mm	14' 10"
<b>2</b> Overall width	2112 mm	83"
<b>3</b> Compaction width	2090 mm	82"
<b>4</b> Height at ROPS/FOPS	2960 mm	9' 8"
Height at cab	2960 mm	9' 8"
<b>5</b> Wheelbase	3300 mm	10' 10"
<b>6</b> Ground clearance	205 mm	8"
Tire size	14/70 x 20	
Tire diameter	960 mm	38"
Tire overlap	84 mm	3"

## Service Refill Capacities

Fuel Tank	208 L	55 gal
Fuel Usage (50% duty)	12 hours	
Cooling System	22 L	5.8 gal
Engine Oil	9 L	2.4 gal
Hydraulic Tank	36 L	9.5 gal
Water Tank	700 L	185 gal
Emulsion Tank	30 L	7.9 gal

## Standard and Optional Equipment

### STANDARD EQUIPMENT:

- 360° rotating/sliding seat
- 700 L (185 gal) Water Tank Capacity
- 12-Volt Electrical System
- 120 Amp Alternator
- 1000 CCA Battery
- Automatic Speed Control

- Eco-mode
- Halogen Working Lights
- Lockable Engine Compartment
- Lockable Vandal Cover
- Product Link™ Ready
- Quick Connect Hydraulic Test Ports

- ROPS/FOPS Platform
- Suspension Seat
- Two-Speed Hydrostatic Transmission

### OPTIONAL EQUIPMENT:

- Air Conditioning
- Air Suspension Seat w/Heat
- Cat Compaction Control (Temperature and Pass-Count Mapping)
- Emulsion Spray System 30 L (7.9 gal)
- Freeze Protection Kit
- LED Lighting
- Machine to Machine Communication

- Mirrors
- Product Link 631/641
- ROPS/FOPS Cab
- Roading Lights
- Sun Canopy
- Temperature Gauge (single sensor)
- Thermal Aprons (Tires)
- Tire Scrapers

- Triple Filtered Water Spray System
- Water Distribution Mats (rubber)
- Warning Beacon
- Wheel Fenders

For more complete information on Cat products, dealer services, and industry solutions, visit us on the web at [www.cat.com](http://www.cat.com)

QEHQ2322 (8-17)

© 2017 Caterpillar  
All Rights Reserved

Materials and specifications are subject to change without notice. Featured machines in photos may include additional equipment. See your Cat dealer for available options.

CAT, CATERPILLAR, SAFETY.CAT.COM, their respective logos, "Caterpillar Yellow" and the "Power Edge" trade dress, as well as corporate and product identity used herein, are trademarks of Caterpillar and may not be used without permission.

