



336 GC

Hydraulic Excavator

Technical Specifications

Configurations and features may vary by region. Please consult your Cat® dealer for availability in your area.

Table of Contents

Specifications	2
Engine	2
Swing Mechanism	2
Weights	2
Track	2
Drive	2
Hydraulic System	2
Service Refill Capacities	2
Standards	2
Sound Performance	2
Operating Weights and Ground Pressures	3
Major Component Weights	3
Dimensions	4
Working Ranges and Forces	5
Bucket Specifications and Compatibility	6
Attachments Offering Guide	7
Standard and Optional Equipment	8
Dealer Installed Kits and Attachments	9

336 GC Hydraulic Excavator Specifications

Engine

Engine Model	Cat® C7.1	
Net Power – ISO 9249	204 kW	273 hp
Engine Power – ISO 14396	205 kW	275 hp
Bore	105 mm	4 in
Stroke	135 mm	5 in
Displacement	7.1 L	433 in ³

- Meets Japan 2014 (Tier 4 Final) emission standards.
- Recommended for use up to 3300 m (10,830 ft) altitude with engine power derate above 2300 m (7,550 ft).
- Net power is tested per ISO 9249. Standards in effect at the time of manufacture.
- Net power advertised is the power available at the flywheel when the engine is equipped with fan, air intake system, exhaust system and alternator.
- Rated speed at 2,200 rpm.

Swing Mechanism

Swing Speed	8.74 rpm	
Maximum Swing Torque	137 kN·m	101,168 lbf·ft

Weights

Operating Weight	34 200 kg	75,300 lb
------------------	-----------	-----------

- Standard undercarriage, Reach boom, R3.2DB (10'6") stick, GDX 1.50 m³ (1.96 yd³) bucket, 700 mm (28") triple grouser shoes, 6.8 t (14,991 lb) counterweight.

Track

Standard Track Shoes Width	700 mm	28 in
Optional Track Shoes Width	800 mm	31 in
Number of Shoes (each side)	45	
Number of Track Rollers (each side)	7	
Number of Carrier Rollers (each side)	2	

Drive

Gradeability	35°/70%	
Maximum Travel Speed	4.7 km/h	3 mph
Maximum Drawbar Pull	296 kN	66,611 lbf

Hydraulic System

Main System – Maximum Flow – Implement	560 L/min (280 × 2 pumps)	148 gal/min (74 × 2 pumps)
Maximum Pressure – Equipment – Implement	35 000 kPa	5,076 psi
Maximum Pressure – Travel	35 000 kPa	5,076 psi
Maximum Pressure – Swing	28 000 kPa	4,061 psi
Boom Cylinder – Bore	145 mm	6 in
Boom Cylinder – Stroke	1440 mm	57 in
Stick Cylinder – Bore	160 mm	6 in
Stick Cylinder – Stroke	1738 mm	68 in
DB Bucket Cylinder – Bore	145 mm	6 in
DB Bucket Cylinder – Stroke	1151 mm	45 in

Service Refill Capacities

Fuel Tank Capacity	600 L	158.5 gal
Cooling System	39 L	10.2 gal
Engine Oil (with filter)	25 L	6.6 gal
Swing Drive (each)	18 L	4.8 gal
Final Drive (each)	8 L	2.1 gal
Hydraulic System (including tank)	373 L	98.5 gal
Hydraulic Tank	161 L	42.5 gal
DEF Tank	50 L	13.2 gal

Standards

Brakes	ISO 10265:2008
Cab/ROPS	ISO 12117-2:2008

Sound Performance

ISO 6395 (external)	105 dB(A)
ISO 6396 (inside cab)	72 dB(A)

- Hearing protection may be needed when operating with an open operator station and cab (when not properly maintained or doors/windows open) for extended periods or in a noisy environment.

336 GC Hydraulic Excavator Specifications

Operating Weights and Ground Pressures

	700 mm (28") Triple Grouser Shoes				800 mm (31") Triple Grouser Shoes			
	Weight		Ground Pressure		Weight		Ground Pressure	
6.8 t (14,991 lb) Counterweight								
Reach Boom + R3.2 (10'6") Stick + 1.50 m ³ (1.96 yd ³) GDX Bucket	34 200 kg	75,300 lb	60.0 kPa	8.7 psi	34 800 kg	76,600 lb	52.5 kPa	7.6 psi
Reach Boom + R2.8 (9'2") Stick + 1.60 m ³ (2.09 yd ³) GDX Bucket	34 100 kg	75,200 lb	59.9 kPa	8.7 psi	34 700 kg	76,500 lb	52.4 kPa	7.6 psi

All operating weights include a 90% fuel tank with 75 kg (165 lb) operator.

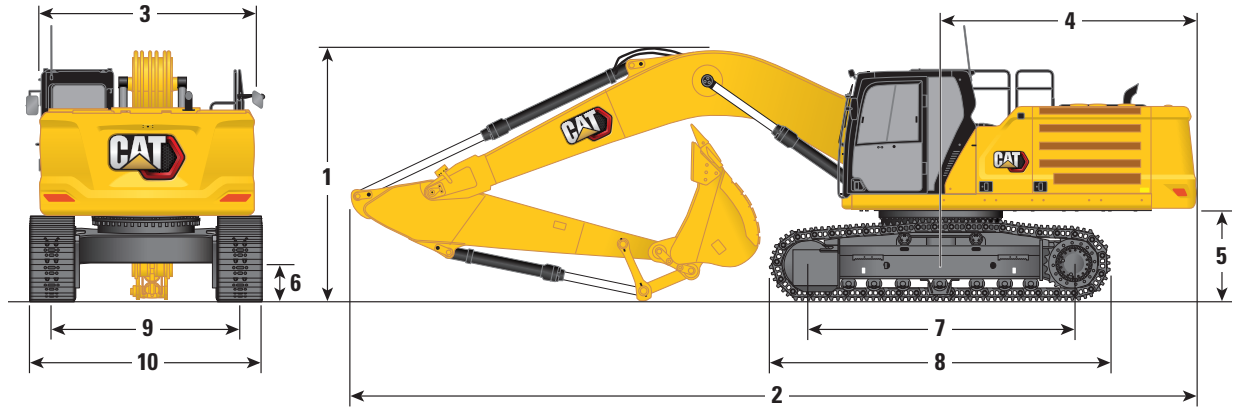
Major Component Weights

	kg	lb
Base machine with 6.8 t (14,991 lb) counterweight, standard swing frame, base frame with standard track rollers and carrier rollers	23 320	51,420
Track Shoes:		
700 mm (28") Width, 11 mm (0.43") Thick, Triple Grouser Track Shoes	4080	8,990
800 mm (31") Width, 13 mm (0.51") Thick, Triple Grouser Track Shoes	4680	10,310
Two Boom Cylinders	560	1,240
Weight of 90% Fuel Tank and 75 kg (165 lb) Operator	550	1,210
Counterweight:		
6.8 t (14,991 lb) Counterweight	6800	14,990
Swing Frame:		
Standard Swing Frame	3160	6,960
Standard Undercarriage:		
Base Frame with Standard Track Rollers and Carrier Rollers	7870	17,350
Boom (including lines, pins, stick cylinder):		
Reach Boom 6.5 m (21'4")	3140	6,910
Sticks (including lines, pins, bucket cylinder, bucket linkage):		
Reach Stick R2.8DB (9'2")	1650	3,650
Reach Stick R3.2DB (10'6")	1760	3,890
Buckets (without linkage):		
1.50 m ³ (1.96 yd ³) GDX	1310	2,900
1.60 m ³ (2.09 yd ³) GDX	1380	3,040
Quick Coupler:		
Pin Grabber QC	700	1,550

336 GC Hydraulic Excavator Specifications

Dimensions

All dimensions are approximate and may vary depending on bucket selection.



Boom Option

**Reach Boom
6.5 m (21'4")**

Stick Options

Reach Stick

R3.2DB (10'6")

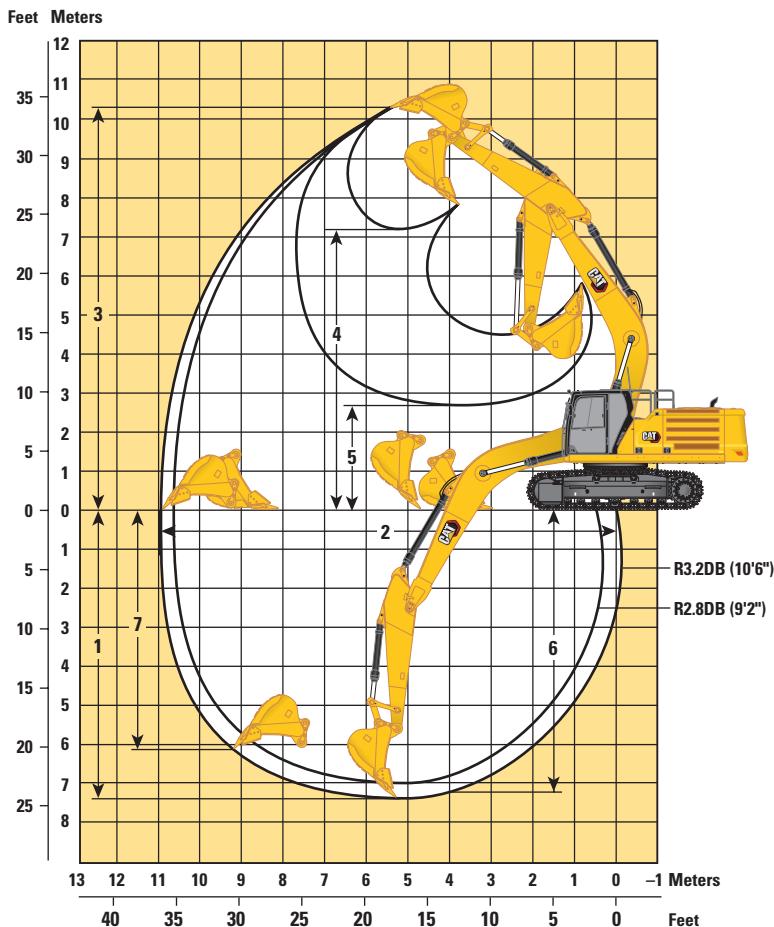
R2.8DB (9'2")

	R3.2DB (10'6")		R2.8DB (9'2")	
1 Machine Height:				
Cab Height	3170 mm	10'4"	3170 mm	10'4"
FOGS Height	3310 mm	10'10"	3310 mm	10'10"
Handrails Height	3160 mm	10'10"	3160 mm	10'10"
With Boom/Stick/Bucket Installed	3360 mm	11'0"	3580 mm	11'8"
With Boom/Stick Installed	3300 mm	11'8"	3430 mm	11'3"
With Boom Installed	2880 mm	9'5"	2880 mm	9'5"
With Boom/Stick/Bucket Installed (with auxiliary lines)	3420 mm	11'2"	3600 mm	11'9"
With Boom/Stick Installed (with auxiliary lines)	3380 mm	11'1"	3480 mm	11'5"
With Boom Installed (with auxiliary lines)	2970 mm	9'8"	2970 mm	9'8"
2 Machine Length:				
With Boom/Stick/Bucket Installed	11 150 mm	36'6"	11 210 mm	36'9"
With Boom/Stick Installed	11 130 mm	36'6"	11 180 mm	36'8"
With Boom Installed	9960 mm	32'8"	9960 mm	32'8"
With Boom/Stick/Bucket Installed (with auxiliary lines)	11 150 mm	36'6"	11 210 mm	36'9"
With Boom/Stick Installed (with auxiliary lines)	11 130 mm	36'6"	11 180 mm	36'8"
With Boom Installed (with auxiliary lines)	10 010 mm	32'10"	10 010 mm	32'10"
3 Upperframe Width without Walkways	2970 mm	9'9"	2970 mm	9'9"
4 Tail Swing Radius	3530 mm	11'6"	3530 mm	11'6"
5 Counterweight Clearance	1250 mm	4'1"	1250 mm	4'1"
6 Ground Clearance	510 mm	1'8"	510 mm	1'8"
7 Length to Center of Rollers	3610 mm	11'10"	3610 mm	11'10"
8 Track Length	4590 mm	15'1"	4590 mm	15'1"
9 Track Gauge	2590 mm	8'5"	2590 mm	8'5"
10 Undercarriage Width:				
700 mm (28") Shoes	3290 mm	10'9"	3290 mm	10'9"
800 mm (31") Shoes	3390 mm	11'1"	3390 mm	11'1"
Bucket Type	GDX		GDX	
Bucket Capacity	1.50 m ³	1.96 yd ³	1.60 m ³	2.09 yd ³
Bucket Tip Radius	1680 mm	5'6"	1680 mm	5'6"

336 GC Hydraulic Excavator Specifications

Working Ranges and Forces

All dimensions are approximate and may vary depending on bucket selection.



Boom Option

Reach Boom
6.5 m (21'4")

Stick Options

Reach Stick

	R3.2DB (10'6")		R2.8DB (9'2")	
	mm	ft/in	mm	ft/in
1 Maximum Digging Depth	7410	24'3"	7010	22'11"
2 Maximum Reach at Ground Line	10 940	35'10"	10 630	34'10"
3 Maximum Cutting Height	10 290	33'9"	10 340	33'11"
4 Maximum Loading Height	7190	23'7"	7190	23'7"
5 Minimum Loading Height	2690	8'9"	3090	10'1"
6 Maximum Depth Cut for 2440 mm (8'0") Level Bottom	7240	23'9"	6840	22'5"
7 Maximum Vertical Wall Digging Depth	6130	20'1"	6060	19'10"
Bucket Digging Force (ISO)	208 kN	46,740 lbf	208 kN	46,740 lbf
Stick Digging Force (ISO)	150 kN	33,610 lbf	167 kN	37,450 lbf
Bucket Type	GD _X		GD _X	
Bucket Capacity	1.50 m ³	1.96 yd ³	1.60 m ³	2.09 yd ³
Bucket Tip Radius	1680 mm	5'5"	1680 mm	5'5"

336 GC Hydraulic Excavator Specifications

Bucket Specifications and Compatibility

	Linkage	Width		Capacity		Weight		Fill %	6.8 t (14,991 lb) Counterweight	
		mm	in	m ³	yd ³	kg	lb		Reach Boom	
									R2.8 (9'2")	R3.2 (10'6")
Pin-On (No Quick Coupler)										
Genral Duty – Excavation	DB	1400	55	1.40	1.83	1163	2,563	100	●	●
	DB	1450	57	1.50	1.96	1200	2,645	100	●	●
	DB	1550	61	1.60	2.09	1262	2,783	100	●	●
Heavy Duty – Excavation	DB	1450	57	1.40	1.83	1467	3,234	100	●	●
	DB	1500	59	1.50	1.96	1518	3,346	100	●	●
Heavy Duty	DB	1500	61	1.88	2.46	1583	3,490	100	⊙	⊙
Heavy Duty – Excavation Skeleton	DB	1450	57	1.40	1.83	1466	3,232	100	●	●
								kg	5195	4890
								lb	11,453	10,781
With Cat Pin Grabber Coupler										
Genral Duty – Excavation	DB	1400	55	1.40	1.83	1163	2,563	100	●	●
	DB	1450	57	1.50	1.96	1200	2,645	100	●	●
	DB	1550	61	1.60	2.09	1262	2,783	100	●	⊙
Heavy Duty – Excavation	DB	1450	57	1.40	1.83	1467	3,234	100	●	⊙
	DB	1500	59	1.50	1.96	1518	3,346	100	⊙	⊙
Heavy Duty	DB	1500	60	1.88	2.46	1583	3,490	100	⊖	○
Heavy Duty – Excavation Skeleton	DB	1450	57	1.40	1.83	1466	3,232	100	●	⊙
								kg	4498	4194
								lb	9,917	9,247

The above loads are in compliance with hydraulic excavator standard EN474-5:2006 + A3:2013, they do not exceed 87% of hydraulic lifting capacity or 75% of tipping capacity with front linkage fully extended at ground line with bucket curled.

Capacity based on ISO 7451:2007.

Bucket weight with General Duty tips.

Maximum Material Density:

- 2100 kg/m³ (3,500 lb/yd³)
- ⊙ 1800 kg/m³ (3,000 lb/yd³)
- ⊖ 1500 kg/m³ (2,500 lb/yd³)
- 1200 kg/m³ (2,000 lb/yd³)

Caterpillar recommends using appropriate work tools to maximize the value customers receive from our products. Use of work tools, including buckets, which are outside of Caterpillar's recommendations or specifications for weight, dimensions, flows, pressures, etc. may result in less-than-optimal performance, including but not limited to reductions in production, stability, reliability, and component durability. Improper use of a work tool resulting in sweeping, prying, twisting and/or catching of heavy loads will reduce the life of the boom and stick.

336 GC Hydraulic Excavator Specifications

Attachments Offering Guide

Not all Attachments are available in all regions. Consult your Cat dealer for configurations available in your region.

Match
 * Working range front only
 No Match

PIN-ON ATTACHMENTS

Counterweight		6.8 mt (15,000 lb)	
Boom Type		Reach	
Stick Length		2.8 m (9'2")	3.2 m (10'6")
Hydraulic Hammers	H140 S	✓	✓
	H160 S	✓	✓
Pulverizers	P225	✓	✓
	P235	✓	✓

CAT PIN GRABBER COUPLER ATTACHMENTS

Counterweight		6.8 mt (15,000 lb)	
Boom Type		Reach	
Stick Length		2.8 (9'2")	3.2 (10'6")
Hydraulic Hammers	H140 S	✓	✓
	H160 S	✓	✓
Pulverizers	P225	✓	✓
	P235	✓*	

BOOM-MOUNT ATTACHMENTS

Counterweight		6.8 mt (15,000 lb)	
Boom Type		Reach	
Mobile Scrap and Demolition Shears	S2070	✓	
	S2090	✓*	
	S3050	✓	
	S3070	✓	

336 GC Standard and Optional Equipment

Standard and Optional Equipment

Standard and optional equipment may vary. Consult your Cat dealer for details.

	Standard	Optional		Standard	Optional
CAB			HYDRAULIC SYSTEM		
ROPS, standard sound suppression	✓		Boom and stick regeneration circuit	✓	
High-resolution 203 mm (8") LCD touchscreen monitor	✓		Electronic main control valve	✓	
Automatic bi-level air conditioner	✓		Automatic hydraulic oil warm up	✓	
Jog dial and shortcut keys for monitor control	✓		Reverse swing damping valve	✓	
Keyless push-to-start engine control	✓		Automatic swing parking brake	✓	
Height-adjustable console, three steps with tool	✓		High performance hydraulic return filter	✓	
Mechanically adjustable seat suspension	✓		Two speed travel	✓	
51 mm (2") seat belt	✓		Combined two-way auxiliary circuit		✓
Fixed left-side console	✓		Combined two-way auxiliary circuit with hammer return filter		✓
Bluetooth® integrated radio with USB ports	✓		Medium-pressure auxiliary circuit		✓
12V DC outlets (×2)	✓		Quick coupler circuit for Cat Pin Grabber		✓
Document storage	✓		UNDERCARRIAGE AND STRUCTURES		
Cup and bottle holders	✓		Towing eye on base frame	✓	
Openable two-piece front window	✓		Full-length track guiding guards		✓
Upper radial wiper with 70/30 with washer	✓		Center track guiding guards		✓
Openable steel hatch	✓		Bottom guard	✓	
LED dome and lower interior lights	✓		Travel motor guard	✓	
Roller front sunscreen	✓		Grease lubricated track	✓	
Radial lower wiper		✓	6.8 t (14,991 lb) counterweight	✓	
Rain protector plus cab light cover		✓	600 mm (24") triple grouser track shoes		✓
ENGINE			700 mm (28") triple grouser track shoes		✓
Cold start block heaters		✓	800 mm (31") triple grouser track shoes		✓
Two selectable modes: Power, Smart	✓		BOOMS, STICKS AND LINKAGES		
Automatic engine speed control	✓		6.5 m (21'4") Reach boom	✓	
Hydraulic reverse fan		✓	2.8 m (9'2") stick		✓
52° C (126° F) high-ambient cooling capacity	✓		3.2 m (10'6") stick		✓
-18° C (0° F) cold start capability	✓		Bucket linkage, DB family without lifting eye		✓
Double element air filter with integrated precleaner	✓				
Dual stage four micron main filter and 10 micron primary filter with water separator and water separator indicator switch	✓				

(continued on next page)

336 GC Standard and Optional Equipment

Standard and Optional Equipment *(continued)*

Standard and optional equipment may vary. Consult your Cat dealer for details.

	Standard	Optional		Standard	Optional
ELECTRICAL SYSTEM			SAFETY AND SECURITY		
Maintenance-free 1,000 CCA batteries (×2)	✓		Caterpillar One Key security system	✓	
Centralized electrical disconnect switch	✓		Lockable external tool/storage box	✓	
LED chassis light, LH and RH boom lights, cab lights	✓		Lockable door, fuel, and hydraulic tank locks	✓	
CAT TECHNOLOGY			Lockable fuel drain compartment	✓	
Cat Product Link™	✓		Service platform with anti-skid plate and recessed bolts	✓	
Auto hammer stop	✓		RH handrail and hand hold (ISO 2867:2011 compliant)	✓	
SERVICE AND MAINTENANCE			Signaling/warning horn	✓	
Grouped location of engine oil and fuel filters	✓		Ground-level secondary engine shutoff switch	✓	
Scheduled Oil Sampling (S·O·S SM) ports	✓		Rear and right-hand-sideview camera	✓	
			Falling object guard system (not compatible with cab light cover, rain protector)		✓

336 GC Attachments

Dealer Installed Kit and Attachments

Attachments may vary. Consult your Cat dealer for details.

CAB

- Radial lower wiper
- Polycarbonate roof hatch
- LH/RH electrical pedal for tool control
- Rain protector plus cab light cover

SAFETY AND SECURITY

- Bluetooth receiver kit
- Bluetooth key fob

GUARDS

- Swivel guard
- Side rubber bumper guard
- Falling object guard system (not compatible with cab light cover, rain protector)
- Mesh guard full front (not compatible with cab light cover, rain protector)
- Mesh guard lower half front

For more complete information on Cat products, dealer services, and industry solutions, visit us on the web at www.cat.com

© 2020 Caterpillar
All rights reserved

Materials and specifications are subject to change without notice. Featured machines in photos may include additional equipment. See your Cat dealer for available options.

CAT, CATERPILLAR, LET'S DO THE WORK, their respective logos, "Caterpillar Corporate Yellow," the "Power Edge" and Cat "Modern Hex" trade dress as well as corporate and product identity used herein, are trademarks of Caterpillar and may not be used without permission.

Based on the Labor, Safety and Health Laws in Japan, employer of small construction equipment are required to provide specific training for all operators on machines with ship weight less than 3 metric ton. For machines greater than 3 metric ton, operator needs to obtain operator license certification from a Government approved registered training school.

AEXQ2239-02 (09-2020)
Replaces AEXQ2239-01
Build Number: 07C
(Japan)

