



Cat[®] 907M

AG HANDLER

FEATURES:

The Cat[®] 907M Ag Handler is compact, yet powerful, allowing you to do what you want, when you need to, in any agricultural application. The Ag Handler has features that will maximize the performance of the machine, making it a perfect fit to use around the farm.

- **Efficiently Powerful** – Experience hybrid like fuel efficiency with an intelligent hydrostatic power train. Eco Mode will allow you to maximize fuel efficiency while maintaining the power going into the pile.
- **Work Made Easy** – Move more with Caterpillar’s patented Optimized Z-Bar linkage. The parallel lift and high tilt forces throughout the working range allow you to safely and confidently handle loads with precise control. Multi-function work has never been easier with dedicated pumps for each system, allowing the operator to simultaneously lift, steer and drive without compromise.
- **Enjoy All Day Comfort** – Have a seat and enjoy excellent all around visibility, whisper quiet sound levels, and low-effort joystick controls while riding on a fully adjustable seat suspension. The spacious cab combined with smooth hydraulic and power train controls make this the most comfortable seat on your job site.
- **Customize Your Experience** – Meet your application requirements and individual preferences with Caterpillar’s industry first adjustable power train and implement response settings. Fine tune machine performance with adjustments at your fingertips through the soft touch button keypad.
- **Configured for Success** – The Ag Handler is configured with items such as a high speed transmission for quick travel from farm to field, engine air pre-cleaner for dusty environments, Ag specific tires to maximize traction and LED work lights when operating early in the morning, ensuring that this machine is configured for success.

Specifications

Engine

Engine Model	Cat C3.3B DIT*	
Rated Net Power @ 2,500 rpm		
SAE J1349	51 kW	68 hp
Maximum Gross Power		
ISO 14396	55 kW	73 hp
SAE J1995	55 kW	74 hp
Maximum Net Power		
ISO 9249	52 kW	69 hp
SAE J1349	51 kW	68 hp

*The Cat C3.3B DIT engine meets U.S. EPA Tier 4 Final/EU Stage IIIB emission standards.

Weight

Operating Weight	5880 kg	12,958 lb
------------------	---------	-----------

Note: Machine with full fuel tank, ROPS/FOPS cab, 80 kg (176 lb) operator, skid steer loader coupler (SSL) and general purpose bucket (GP).

Buckets

Bucket Capacities		
ISO Coupler	0.75-1.2 m ³	
SSL Style Coupler	1.0-1.6 yd ³	

Travel Speeds

Speed 1	10 km/h	6.2 mph
Speed 2	20 km/h	12.4 mph
High Speed	35 km/h	21.7 mph

Hydraulic System

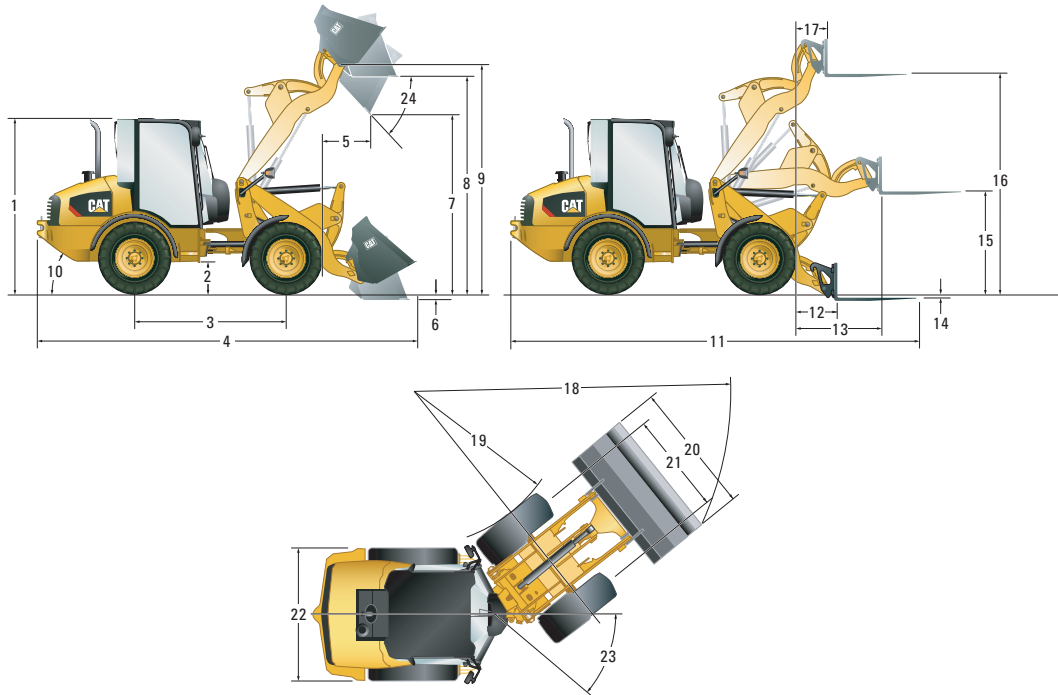
Main Relief – 3rd Aux Flow	235 bar	3,400 psi
Standard	76 L/min	20 gal/min
High Flow	120 L/min	31 gal/min
Hydraulic Cycle Time		
Lift	5.2 seconds	
Lower	3.2 seconds	
Dump	1.3 seconds	
Rack Back	2.1 seconds	

Service Refill Capacities

Cooling System	17 L	4.5 gal
Fuel Tank	78 L	20.6 gal
Hydraulic System	70 L	18.5 gal
Engine Oil	11.2 L	3.0 gal



907M Ag Handler



Dimensions

(All dimensions are approximate. Dimensions shown are based on the machine equipped with general purpose bucket and standard 340/80 R18, MX, XMCL tires.)

	With ISO Coupler		With SSL Coupler	
1 Height: Ground to Cab	2559 mm	8 ft 4 in	2559 mm	8 ft 4 in
2 Height: Ground Clearance	302 mm	11 in	302 mm	11 in
3 Length: Wheel Base	2170 mm	7 ft 1 in	2170 mm	7 ft 1 in
4 Length: Overall with Bucket	5392 mm	17 ft 8 in	5550 mm	18 ft 2 in
5 Reach: Bucket at 45°	740 mm	2 ft 5 in	863 mm	2 ft 9 in
6 Dig Depth	108 mm	4.2 in	116 mm	4.5 in
7 Clearance: Bucket at 45°	2469 mm	8 ft 1 in	2371 mm	7 ft 9 in
8 Clearance: Level Bucket	3006 mm	9 ft 10 in	2998 mm	9 ft 10 in
9 Height: Bucket Pin	3212 mm	10 ft 6 in	3212 mm	10 ft 6 in
10 Departure Angle	33°		33°	
11 Length: Overall with Forks	5921 mm	19 ft 5 in	5923 mm	19 ft 5 in
12 Reach: Ground	742 mm	2 ft 5 in	744 mm	2 ft 5 in
13 Reach: Level Arm	1227 mm	4 ft	1291 mm	4 ft 2 in
14 Fork Dig Depth	80 mm	3.1 in	6 mm	0.2 in
15 Clearance: Level Arm	1370 mm	4 ft 5 in	1444 mm	4 ft 8 in
16 Clearance: Full Lift	3034 mm	9 ft 11 in	3108 mm	10 ft 2 in
17 Fork Reach at Full Lift	455 mm	1 ft 5 in	520 mm	1 ft 8 in
18 Turning Radius: Over Bucket	4475 mm	14 ft 8 in	4509 mm	14 ft 9 in
19 Turning Radius: Inside Tire	2108 mm	6 ft 10 in	2108 mm	6 ft 10 in
20 Width: Bucket	2035 mm	6 ft 8 in	2035 mm	6 ft 8 in
21 Width: Tread Center	1420 mm	4 ft 7 in	1420 mm	4 ft 7 in
22 Width: Over Tires	1840 mm	6 ft	1840 mm	6 ft
23 Articulation Angle	39°		39°	
24 Dump Angle at Full Lift	45°		43°	

Operating Specifications

Machine with full fuel tank, ROPS/FOPS cab, 80 kg (176 lb) operator, either SSL or ISO coupler and general purpose bucket (GP).

Coupler Type	ISO		SSL	
	340/80 R18		340/80 R18	
Tire Size	340/80 R18		340/80 R18	
Operating Weight	5833 kg	12,854 lb	5880 kg	12,958 lb
Rated Bucket Capacity	0.9 m ³	1.2 yd ³	0.9 m ³	1.2 yd ³
Breakout Force, Bucket	50 kN	11,240 lbf	40 kN	8,983 lbf
Rated Operating Load at Full Turn, Bucket	1823 kg	4,019 lb	1707 kg	3,763 lb
Straight Tipping Load, Bucket	4323 kg	9,531 lb	4058 kg	8,946 lb
Full Turn Static Tipping Load, Bucket	3646 kg	8,038 lb	3415 kg	7,529 lb
Rack Back, Transport Position	52°		53°	
Rated Operating Load at Full Turn, Forks (EN 474-3:2006, firm and level ground, 1.25 stability and 500 mm [20 in] load center)	2371 kg	5,226 lb	2257 kg	4,974 lb

Maximum Material Densities

Based on ISO 7546:1983, and rated operating loads at full turn with 100% bucket capacity and SSL coupler.

Bucket Type	General Purpose		Multi Purpose		Light Material	
	0.9 m ³	1.2 yd ³	0.8 m ³	1.0 yd ³	1.25 m ³	1.6 yd ³
Rated Capacity	0.9 m ³	1.2 yd ³	0.8 m ³	1.0 yd ³	1.25 m ³	1.6 yd ³
Dump Height	2469 mm	97 in	2433 mm	85 in	2388 mm	85 in
Maximum Material Density	1737 kg/m ³	3,031 lb/yd ³	2053 kg/m ³	3,460 lb/yd ³	1402 kg/m ³	2,363 lb/yd ³
Bucket Width	2035 mm	80 in	1880 mm	74 in	2080 mm	82 in



Bale Grab



Dual Bale Spear



Mixing Bucket



Grapple Bucket



Silage Defacer

907M Ag Handler

STANDARD EQUIPMENT

LOADER

- Return to dig work tool positioner
- Adjustable implement modulation

TRANSMISSION/HYDRAULICS

- Adjustable speed control (creeper control)
- Rimpull control
- Electronic throttle lock
- Adjustable Hystat response settings
- Ride control
- 100% differential lock on both axles, selectable on the move
- 18° frame oscillation, 78° articulation
- Transmission, 35 km/h (21.7 mph) with secondary steering and heavy duty axles
- Transmission inching function
- Hydrostatic drive
- Work tool quick coupler
- Proportional auxiliary hydraulic circuit
- Loader arm float function
- Connect under pressure hydraulic quick connector
- Parallel lift Z-bar loader
- Demand based cooling fan

ENGINE

- Precleaner for engine air filter
- Cat C3.3B DIT Tier 4 Final/Stage IIIB
- Two stage air cleaner with visual indicator
- Cat extended life coolant
- Lockable engine compartments
- Easy quick release fuel filter/water separator
- Engine oil drain valve (non spill eco drain)
- Closed circuit breather
- Eco Mode

ELECTRICAL

- Magnetic rotating beacon
- Work tool wiring harness
- Working lights, two front and two rear
- Cab mounted fuse panel
- Battery disconnect switch
- Heavy duty battery, 12V
- Engine cold starter aid
- Alternator 90 amp
- Service point connector for electronic diagnostics (Electronic Technician™)
- Reverse alarm

GENERAL

- E-coat paint primer
- Pressure test points
- Recovery hitch and pin
- Scheduled Oil Sampling S-O-S ports

OPERATOR ENVIRONMENT

- Adjustable steering column
- Air conditioning
- Heater with window, side and feet vents
- Heated rear window
- Radio/CD/MP3/WMA/AUX
- Two doors with sliding window
- Wiper/washer, front and rear
- Cabin light
- Pressurized cab
- Cup holder
- Sun visor
- ROPS and FOPS certified canopy/cab
- Adjustable arm rest
- Retractable seat belt
- Auxiliary power sockets
- Coat hook
- On board digital display cluster
- Sound suppression
- Multifunction joystick with direction control
- Two external knock back mirrors
- Warning indicators for major systems
- Easy clean cab floor
- Lockable storage box
- Adjustable internal mirror
- Operator station on isolation mounts
- Digital service hour meter
- Gauges: fuel hydraulic temp, coolant temp, speedometer
- Warnings: master, park brake, hydraulic oil pressure, engine oil pressure, coolant temp, electrical system, hydraulic filter bypass
- Suspended brake/accelerator pedals
- Cloth, electric air suspension, arm/head rest, lumbar support, heated back seat

OPTIONAL EQUIPMENT

LOADER

- High flow auxiliary hydraulics with pressure relieving quick disconnect manifold
- Load check valves

ENGINE

- Engine block heater 120V

ELECTRICAL

- Machine Security System (MSS)

GENERAL

- Custom color
- Tire options

FLUIDS

- Cat extended life coolant (-50° C/-58° F)

OPERATOR ENVIRONMENT

- Rear blind

WORK TOOLS

- For all work tools and standard/high flow options (consult your Cat dealer)

For more complete information on Cat products, dealer services, and industry solutions, visit us on the web at www.cat.com

© 2018 Caterpillar
All rights reserved

Materials and specifications are subject to change without notice. Featured machines in photos may include additional equipment. See your Cat dealer for available options.

CAT, CATERPILLAR, SAFETY.CAT.COM, their respective logos, "Caterpillar Yellow" and the "Power Edge" trade dress, as well as corporate and product identity used herein, are trademarks of Caterpillar and may not be used without permission.

AEHQ8116 (03-2018)
(N Am, Eur)

