



# Cat<sup>®</sup> TH306D

AG HANDLER TELEHANDLER

## FEATURES:

- **Power Train** – Designed for the livestock farmer, the Cat<sup>®</sup> TH306D features a powerful 74.4 kW (100 hp/bhp) engine coupled to a two speed hydrostatic transmission, allowing engine speed and forward speed to be independently controlled.
- **Frame, Boom and Linkage** – Designed for durability. Easy to access greasing points mean a long, trouble free life for the machine. A Z-bar linkage delivers powerful breakout forces and fast cycle times.
- **Powerful Hydraulics** – Designed to operate hydraulically powered work tools such as straw spreaders and animal feeder buckets. Rear hydraulic services can also operate work tools as well as tipping trailers.
- **Cab** – The cab is designed with the operator in mind with a multi function joystick and a comfortable working environment. The unique “Operator Preferences” feature allows the machine to be tuned to suit individual operators. Options include a heated air suspension seat, large display screen with pre-loaded load charts, rear view camera, reversing sensors and air conditioning.

## Specifications

### Engine

Model	TCD3.6 L4*	
Gross Power	74.4 kW	100 hp/bhp
Gross Power	101.2 CH/CV/PS	
Maximum Torque	410 N-m	
Bore	98 mm	
Stroke	120 mm	
Displacement	3.6 L	

\*Meets EU Stage IV emission standards.

### Weights

Operating Weight with Carriage and Forks\* 6168 kg

\*Represents machine configuration of 74.4 kW (100 hp/bhp) engine on standard 405/70 T20 MPT01 tires.

### Operating Specifications

Rated Load Capacity	2800 kg
Maximum Lift Height	5.8 m
Capacity at Maximum Lift Height	2500 kg
Maximum Forward Reach	3.1 m
Capacity at Maximum Forward Reach	1150 kg
Outside Turning Radius over Tires	3.7 m
Outside Turning Radius over Forks	4.4 m

### Service Refill Capacities

Fuel Tank	104 L
Diesel Exhaust Fluid	10 L
Hydraulic Tank	120 L

### Brakes

Service Brakes	Boost assisted on front axle
Parking Brake	SAHR on front axle

### Transmission

Type	Hydrostatic with two speed on the move range change
Forward	
1	0 to 20 km/h
2	0 to 32 km/h
Reverse	
1	0 to 20 km/h
2	0 to 32 km/h

### Electrical

Battery	1 × 12V 1,000 CCA Battery
Alternator Output	12V/150A



# TH306D Ag Handler

## Hydraulic System

System Type	Open Center
Pump Type	Gear
Maximum Pump Capacity	95 L/min
System Pressure	275 bar
Auxiliary Hydraulic Pressure	245 bar
Auxiliary Hydraulic Flow	
Boom Head – Intermittent	90 L/min
Boom Head – Continuous	90 L/min
Machine Rear	80 L/min

## Boom Performance

Boom Up	6.5 sec
Boom Down	5.5 sec
Tele Out	5 sec
Tele In	5 sec
Crowd Forward (Dump)	3 sec
Crowd Backward	3.5 sec
Combined	
Up and Out	15 sec
Down and In	9 sec

## Axles

Front Axle	Planetary reduction hubs with limited slip differential
Rear Axle	Open differential with planetary reduction hubs

## Tires

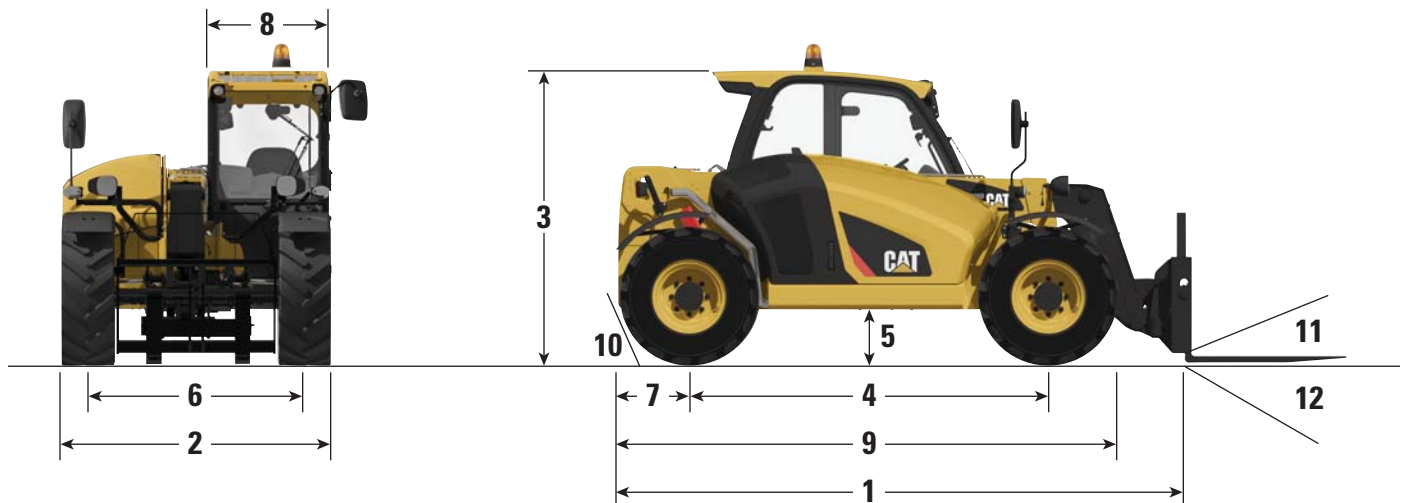
Standard	Mitas 405/70 T20 MPT01
Options	Michelin 400/70 R20 XMCL

## Performance

Drawbar Pull	57 kN
Boom Breakout Force	31 kN
Bucket Breakout Force	52 kN
Quick Coupler Rotation	145 degrees
Noise Levels	
In Cab	74 dB(A)
External	106 dB(A)
Towable Mass	
Hydraulically Braked	8000 kg

## Air Conditioning System

The air conditioning system on this machine contains the fluorinated greenhouse gas refrigerant R134a (Global Warming Potential = 1430). The system contains 1.2 kg of refrigerant which has a CO<sub>2</sub> equivalent of 1.575 metric tonnes.

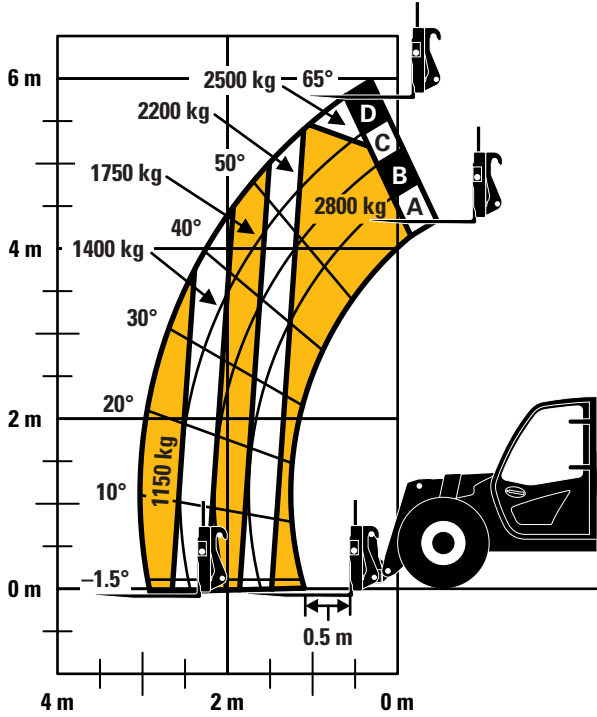


## Dimensions (All dimensions are approximate.)

<b>1</b> Overall Length to Front of Carriage	4400 mm	<b>7</b> Overhang	920 mm
<b>2</b> Overall Width (standard tires)	2100 mm	<b>8</b> Cab Width	900 mm
<b>3</b> Overall Height (standard tires)*	2250 mm	<b>9</b> Machine Length	4400 mm
<b>4</b> Wheelbase	2770 mm	<b>10</b> Departure Angle	66°
<b>5</b> Ground Clearance	390 mm	<b>11</b> Maximum Fork Crowd Angle	24°
<b>6</b> Track	1672 mm	<b>12</b> Maximum Fork Dump Angle	121°

\*Add 200 mm for beacon.  
Add 40 mm for top guard.

## Load Chart and Dimensions



### IMPORTANT

Rated lift capacities shown are with machine equipped with carriage and pallet forks. The machine must be level on a firm surface with undamaged, properly inflated tires. Machine specifications and stability are based on rated lift capacities at specific boom angles and boom lengths. (If specifications are critical, the proposed application should be discussed with your dealer.)

DO NOT exceed rated lift capacity loads, as unstable and dangerous machine conditions will result.

DO NOT tip the machine forward to determine the allowable load.

Use only approved attachments with proper material handler model/attachment load capacity charts displayed in the operator's cab.

*Due to continuous product improvements, machine specifications and/or equipment changes may be made without prior notification.*

# TH306D Ag Handler

**Standard and Optional Equipment** (Standard and Optional equipment may vary. Consult your Cat dealer for details.)

	Standard	Optional		Standard	Optional
<b>Cab ROPS and FOPS</b>			<b>Other Equipment</b>		
Longitudinal Stability Indicator	✓	—	Boom Brushes	✓	—
Reversing Camera	—	✓	Ride Control with Boom Float	—	✓
Reversing Sensors	—	✓	Single Auxiliary Service to Boom Head	✓	—
Large Electronic Display Screen	—	✓	2 <sup>nd</sup> Auxiliary Service to Boom Head	—	✓
Sunscreen	✓	—	Auxiliary Service to Rear	—	✓
Mechanical Suspension Seat with Seat Belt	✓	—	Rear Hitch Mirror, Flat	—	✓
Air Suspension Seat with Seat Belt	—	✓	Rear Hitch Mirror, Convex	—	✓
Heated Air Suspension Seat with Seat Belt	—	✓	Tool Box	—	✓
Roof Wiper	✓	—	Boom Safety Brace	—	✓
Screen Guard	—	✓	<b>Tires</b>		
Roof Guard	✓	—	Mitas MPT01 405/70 T20	✓	—
Heater/De-mister	✓	—	Michelin 400/70 R20 XMCL	—	✓
Air Conditioning	—	✓	<b>Tow Hitches</b>		
Engine Speed Set	✓	—	Retrieval Hitch	—	✓
Multi Function Joystick Controller with FNR	✓	—	Hydraulic Pick Up Hitch	—	✓
Column Mounted FNR Lever	—	✓	EEC Manual Hitch	—	✓
Front and Rear Windscreen Wipers	✓	—	EEC Automatic Hitch	—	✓
SAHR Parking Brake	✓	—	EEC Automatic Hitch with Piton	—	✓
<b>Electrical</b>			Trailer Braking Valve	—	✓
1 × 12V 1,000 CCA Battery	✓	—	<b>Quick Couplers</b>		
Block Heater 240 Volt	—	✓	Manual Cat “IT” Interface	✓	—
Work Lights, 4 × Cab Mounted (2 front, 2 rear) 2 × Boom Mounted	—	✓	Hydraulic Cat “IT” Interface	—	✓
Product Link™ Ready, Version 641	—	✓	• Competitive couplers are available, please consult your Cat dealer for details.		
Seven (7) Pin Trailer Service	—	✓	<b>Work Tools</b>		
Reverse Alarm	✓	—	Floating Fork Carriage	—	✓
Rotating Beacon	—	✓	ISO Class 3 Fixed Fork Carriage	—	✓
			Side Shift Carriage	—	✓
			1 m <sup>3</sup> General Purpose Bucket	—	✓
			1.5 m <sup>3</sup> Rehandling Bucket	—	✓
			1.0 m <sup>3</sup> Multi Purpose Bucket	—	✓
			2.0 m <sup>3</sup> Grain Bucket	—	✓
			Grapple Bucket	—	✓
			Muck Fork and Grapple	—	✓
			Bale Handler	—	✓
			Sweeper Collector	—	✓

For more complete information on Cat products, dealer services, and industry solutions, visit us on the web at [www.cat.com](http://www.cat.com)

© 2017 Caterpillar  
All rights reserved

Materials and specifications are subject to change without notice. Featured machines in photos may include additional equipment. See your Cat dealer for available options.

CAT, CATERPILLAR, SAFETY.CAT.COM, their respective logos, “Caterpillar Yellow” and the “Power Edge” trade dress, as well as corporate and product identity used herein, are trademarks of Caterpillar and may not be used without permission.

AEHQ7827-02 (06-2017)  
Replaces AEHQ7827-01  
(Europe)

