



320 GC

Hydraulic Excavator

Technical Specifications

Configurations and features may vary by region. Please consult your Cat® dealer for availability in your area.

Table of Contents

Specifications	2
Engine	2
Swing Mechanism	2
Weights	2
Track	2
Drive	2
Hydraulic System	2
Service Refill Capacities	3
Standards	3
Sound Performance	3
Operating Weights and Ground Pressures	3
Major Component Weights	4
Dimensions	5
Working Ranges	6
Reach Boom Lift Capacities – Counterweight: 3700 kg (8,200 lb)	7
Bucket Specifications and Compatibility	9
Attachments Offering Guide	10
Standard and Optional Equipment	15
Dealer Installed Kit and Attachments	17
320 GC Environmental Declaration	18

320 GC Hydraulic Excavator Specifications

Engine

Engine Model	Cat® C4.4	
Net Power		
ISO 9249	107 kW	143 hp
ISO 9249 (DIN)	145 hp (metric)	
Engine Power		
ISO 14396	108 kW	145 hp
ISO 14396 (DIN)	147 hp (metric)	
Bore	105 mm	4 in
Stroke	127 mm	5 in
Displacement	4.4 L	269 in ³
Biodiesel Capability	Up to B20 ⁽¹⁾	

- Meets Brazil MAR-1 emission standards, equivalent to U.S. EPA Tier 3 and EU Stage IIIA.
- Recommended for use up to 4500 m (14,764 ft) altitude with engine power derate above 3000 m (9,842.5 ft).
- Advertised power is tested per the specified standard in effect at the time of manufacture.
- Net power advertised is the power available at the flywheel when the engine is equipped with fan, air intake system, exhaust system and alternator.
- Engine speed at 2,000 rpm.

⁽¹⁾Cat engines are compatible with diesel fuel blended with the following lower-carbon intensity fuels** up to:

- ✓ 100% biodiesel FAME (fatty acid methyl ester)*
- ✓ 100% renewable diesel, HVO (hydrogenated vegetable oil) and GTL (gas-to-liquid) fuels

Refer to guidelines for successful application. Please consult your Cat dealer or “Caterpillar Machine Fluids Recommendations” (SEBU6250) for details.

*For use of blends higher than 20% biodiesel, consult your Cat dealer.

**Tailpipe greenhouse gas emissions from lower-carbon intensity fuels are essentially the same as traditional fuels.

Swing Mechanism

Swing Speed	11.3 rpm	
Maximum Swing Torque	74.4 kN·m	54,900 lb-ft

Weights

Operating Weight	20 400 kg	45,000 lb
------------------	-----------	-----------

- Medium undercarriage, Reach boom, R2.9 (9'6") stick, General Duty (GD) 1.0 m³ (1.31 yd³) bucket, 600 mm (24") triple grouser shoes.

Track

Standard Track Shoes Width	600 mm	24 in
Number of Shoes (each side)	47	
Medium undercarriage		
Number of Track Rollers (each side)	7	
Medium undercarriage		
Number of Carrier Rollers (each side)	2	

Drive

Gradeability	35°/70%	
Maximum Travel Speed	5.7 km/h	3.5 mph
Maximum Drawbar Pull	206 kN	46,311 lbf

Hydraulic System

Main System – Maximum Flow – Implement	429 L/min (215 × 2 pumps)	113 gal/min (57 × 2 pumps)
Maximum Pressure – Equipment	35 000 kPa	5,075 psi
Maximum Pressure – Travel	34 300 kPa	4,974 psi
Maximum Pressure – Swing	25 000 kPa	3,625 psi
Boom Cylinder – Bore	120 mm	5 in
Boom Cylinder – Stroke	1260 mm	50 in
Stick Cylinder – Bore	135 mm	5 in
Stick Cylinder – Stroke	1504 mm	59 in
Bucket Cylinder – Bore	115 mm	5 in
Bucket Cylinder – Stroke	1104 mm	43 in

320 GC Hydraulic Excavator Specifications

Service Refill Capacities

Fuel Tank Capacity	345 L	86.6 gal
Cooling System	25 L	6.6 gal
Engine Oil	15 L	4.0 gal
Swing Drive	12 L	3.2 gal
Final Drive (each)	4 L	1.1 gal
Hydraulic System (including tank)	234 L	61.8 gal
Hydraulic Tank	115 L	30.4 gal

Standards

Brakes	ISO 10265:2008
Cab/Rollover Protective Structure (ROPS)	ISO 12117-2:2008
Falling Object Guard System (FOGS) (optional)	ISO 10262:1998 Level II

Sound Performance

ISO 6395:2008 (external)	99 dB(A)
ISO 6396:2008 (inside cab)	70 dB(A)

- Hearing protection may be needed when operating with an open operator station and cab (when not properly maintained or doors/windows open) for extended periods or in a noisy environment.

Operating Weights and Ground Pressures

	600 mm (24") Triple Grouser Shoes	
	Weight	Ground Pressure
	kg (lb)	kPa (psi)
Base Machine Configurations		
Base Frame with Track Rollers and Carrier Rollers		
3700 kg (8,200 lb) Counterweight + Medium Undercarriage Base Machine		
Reach Boom + R2.9 (9'6") Stick + 1.0 m ³ (1.31 yd ³) GD Bucket	20 400 (45,000)	44.7 (6.5)

All operating weights include a 90% fuel tank with 75 kg (165 lb) operator.

320 GC Hydraulic Excavator Specifications

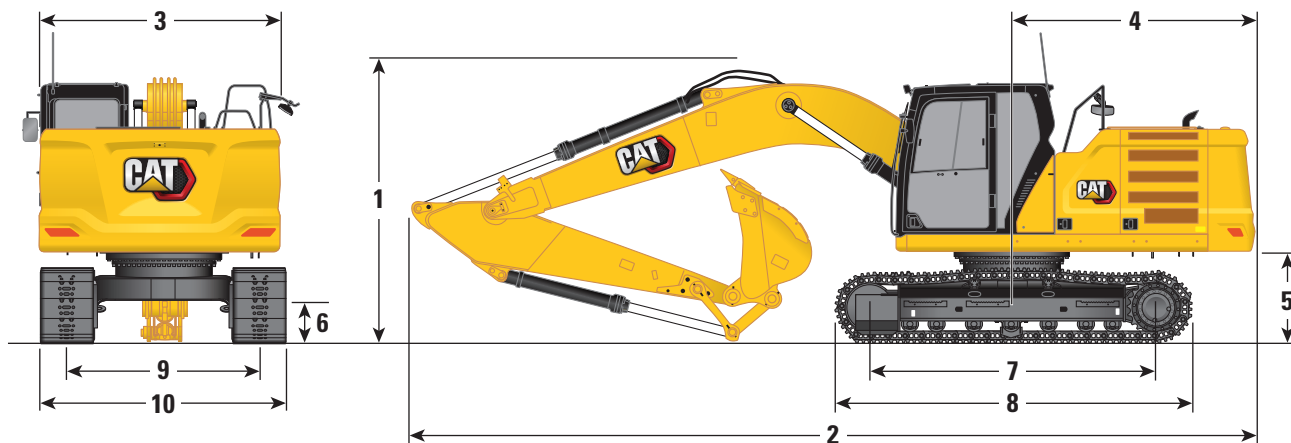
Major Component Weights

	kg	lb
Base Machine (with 3700 kg [8,200 lb] counterweight, standard swing frame, standard base frame with track rollers and standard carrier rollers for medium undercarriage, without boom cylinders – does not include 90% fuel and 75 kg [165 lb] operator)	13 740	30,300
Track Shoes:		
600 mm (24") Width, 8.5 mm (0.33") Thick Triple Grouser Track Shoes	2500	5,500
Two Boom Cylinders	340	700
Weight of 90% Fuel Tank and 75 kg (165 lb) Operator	310	700
Counterweight:		
3700 kg (8,200 lb) Counterweight	3700	8,200
Swing Frame:		
Standard Swing Frame	1910	4,150
Undercarriage (without track shoes):		
Standard Base Frame with HD Track Rollers and Standard Carrier Rollers	4140	9,100
Boom (including lines, pins, stick cylinder):		
Reach Boom (5.7 m/18'8")	1690	3,700
Sticks (including lines, pins, bucket cylinder, bucket linkage):		
Reach Stick (R2.9B1/9'6")	1080	2,400
Reach Stick (R2.5B1/8'2")	1020	2,200
Buckets (without linkage):		
1.0 m ³ (1.31 yd ³) GD	730	1,600
1.0 m ³ (1.31 yd ³) Heavy Duty (HD)	860	1,870

320 GC Hydraulic Excavator Specifications

Dimensions

All dimensions are approximate and may vary depending on bucket selection.



Boom Option

Reach Boom

5.7 m (18'8")

Stick Option

Reach Stick

R2.9B1 (9'6")

R2.5B1 (8'2")

1 Machine Height:

Top of Cab Height	2960 mm	9'9"	2960 mm	9'9"
Top of FOGS Height	3100 mm	10'2"	3100 mm	10'2"
Handrail Height	2950 mm	9'8"	2950 mm	9'8"
With Boom/Stick/Bucket Installed	3160 mm	10'4"	3080 mm	10'1"
With Boom/Stick Installed	2910 mm	9'7"	2830 mm	9'3"
With Boom Installed	2480 mm	8'2"	2480 mm	8'2"

2 Machine Length:

With Boom/Stick/Bucket Installed	9530 mm	31'3"	9530 mm	31'3"
With Boom/Stick Installed	9500 mm	31'2"	9480 mm	31'1"
With Boom Installed	8450 mm	27'9"	8450 mm	27'9"

3 Upperframe Width

2780 mm	9'1"	2780 mm	9'1"
---------	------	---------	------

4 Tail Swing Radius

2830 mm	9'3"	2830 mm	9'3"
---------	------	---------	------

5 Counterweight Clearance

1050 mm	3'5"	1050 mm	3'5"
---------	------	---------	------

6 Ground Clearance

470 mm	1'7"	470 mm	1'7"
--------	------	--------	------

7 Length to Center of Rollers

3450 mm	11'4"	3450 mm	11'4"
---------	-------	---------	-------

8 Track Length

4250 mm	13'11"	4250 mm	13'11"
---------	--------	---------	--------

9 Track Gauge

2380 mm	7'10"	2380 mm	7'10"
---------	-------	---------	-------

10 Undercarriage Width:

600 mm (24") Shoes	2980 mm	9'9"	2980 mm	9'9"
--------------------	---------	------	---------	------

Bucket Type

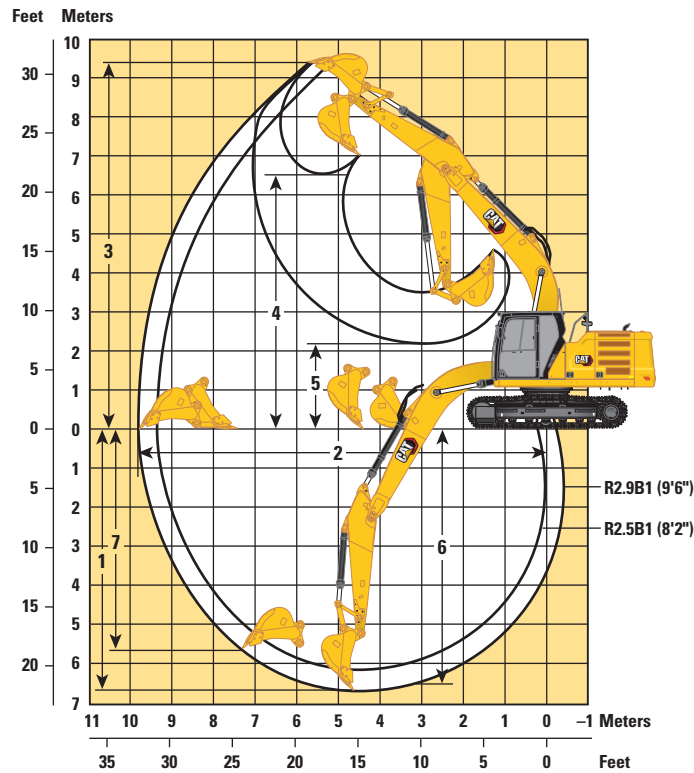
GD

Bucket Capacity	1.0 m ³	1.31 yd ³	1.0 m ³	1.31 yd ³
Bucket Tip Radius	1560 mm	5'1"	1560 mm	5'1"

320 GC Hydraulic Excavator Specifications

Working Ranges

All dimensions are approximate and may vary depending on bucket selection.

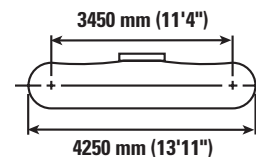
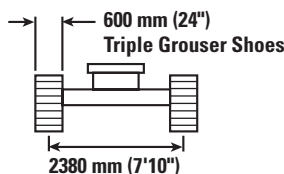
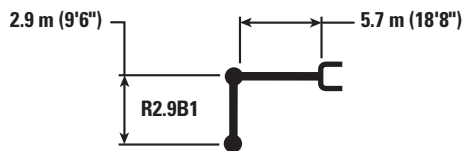


Boom Option	Reach Boom 5.7 m (18'8")			
	Reach Stick R2.9B1 (9'6")		Reach Stick R2.5B1 (8'2")	
1 Maximum Digging Depth	6630 mm	21'9"	6220 mm	20'4"
2 Maximum Reach at Ground Line	9770 mm	32'	9380 mm	30'9"
3 Maximum Cutting Height	9440 mm	30'11"	9240 mm	30'4"
4 Maximum Loading Height	6580 mm	21'7"	6370 mm	20'10"
5 Minimum Loading Height	2260 mm	7'5"	2670 mm	8'9"
6 Maximum Depth Cut for 2440 mm (8'0") Level Bottom	6460 mm	21'2"	6030 mm	19'9"
7 Maximum Vertical Wall Digging Depth	6010 mm	19'8"	5600 mm	18'4"
Bucket Digging Force (ISO)	129 kN	29,007 lbf	129 kN	29,007 lbf
Stick Digging Force (ISO)	99 kN	22,301 lbf	110 kN	24,711 lbf
Bucket Type	GD		GD	
Bucket Capacity	1.0 m ³	1.31 yd ³	1.0 m ³	1.31 yd ³
Bucket Tip Radius	1560 mm	5'1"	1560 mm	5'1"

320 GC Hydraulic Excavator Specifications

Reach Boom Lift Capacities – Counterweight: 3700 kg (8,200 lb) – with Bucket Linkages, without Bucket

Medium Undercarriage



		1500 mm/60 in		3000 mm/120 in		4500 mm/180 in		6000 mm/240 in		7500 mm/300 in		mm in		
7500 mm 300 in	kg lb							*4300 *10,850	*4300 9,950			*3750 *8,300	*3750 *8,300	6150 240
6000 mm 240 in	kg lb							*4950 *10,850	4950 10,600			*3450 *7,600	*3450 *7,600	7290 290
4500 mm 180 in	kg lb							*5450 *11,800	4800 10,300	4850 10,400	3350 7,200	*3400 *7,450	3000 6,650	7990 320
3000 mm 120 in	kg lb					*7950 *17,050	6950 15,000	*6250 *13,500	4550 9,800	4750 10,150	3250 7,000	*3450 *7,600	2750 6,050	8360 330
1500 mm 60 in	kg lb					*9600 *20,700	6450 13,950	6450 13,800	4300 9,300	4600 9,900	3150 6,750	*3700 *8,050	2650 5,800	8450 340
0 mm 0 in	kg lb			*5750 *13,250	*5750 *13,250	9750 20,900	6200 13,350	6250 13,400	4150 8,950	4550 9,750	3050 6,600	3950 8,700	2700 5,900	8260 330
-1500 mm -60 in	kg lb	*6150 *13,750	*6150 *13,750	*10 000 *22,650	*10 000 *22,650	9650 20,700	6100 13,150	6150 13,250	4100 8,800	4500 9,650	3050 6,550	4300 9,450	2900 6,400	7780 310
-3000 mm -120 in	kg lb	*10 600 *23,750	*10 600 *23,750	*14 100 *30,550	11 950 25,600	9700 20,850	6150 13,250	6200 13,350	4100 8,850			5050 11,200	3400 7,550	6950 280
-4500 mm -180 in	kg lb			*11 250 *24,050	*11 250 *24,050	*8100 *17,200	6350 13,700					*6100 *13,400	4700 10,600	5600 220



ISO 10567:2007



*Indicates that the load is limited by hydraulic lifting capacity rather than tipping load. The above loads are in compliance with hydraulic excavator lift capacity standard ISO 10567:2007. They do not exceed 87% of hydraulic lifting capacity or 75% of tipping load. Weight of all lifting accessories must be deducted from the above lifting capacities. Lifting capacities are based on the machine standing on a firm, uniform supporting surface. The use of a work tool attachment point to handle/lift objects, could affect the machine lift performance.

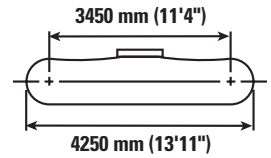
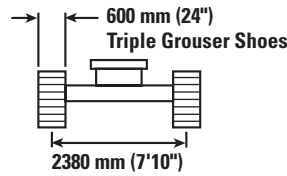
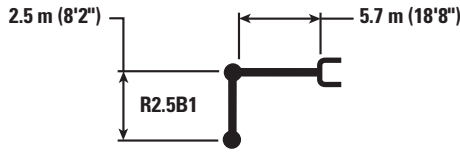
Lift capacity stays with ±5% for all available track shoes.



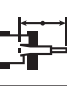



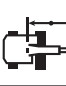



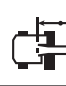
Always refer to the appropriate Operation and Maintenance Manual for specific product information.

320 GC Hydraulic Excavator Specifications

Reach Boom Lift Capacities – Counterweight: 3700 kg (8,200 lb) – with Bucket Linkages, without Bucket

Medium Undercarriage



		3000 mm/120 in		4500 mm/180 in		6000 mm/240 in		7500 mm/300 in				
												mm in
7500 mm 300 in	kg lb									*4500 *10,050	*4500 *10,050	5600 220
6000 mm 240 in	kg lb					*5350 *11,750	4850 10,450			*4150 *9,150	3900 8,750	6830 270
4500 mm 180 in	kg lb			*6750 *14,500	*6750 *14,500	*5800 *12,550	4700 10,150	*4550	3300	*4050 *8,900	3250 7,200	7570 300
3000 mm 120 in	kg lb			*8450 *18,250	6850 14,700	*6550 *14,150	4500 9,700	4700 10,100	3250 6,950	*4150 *9,100	2950 6,500	7960 320
1500 mm 60 in	kg lb			9950 21,400	6400 13,750	6400 13,750	4300 9,250	4600 9,900	3150 6,750	4150 9,100	2850 6,200	8050 320
0 mm 0 in	kg lb			9700 20,850	6150 13,300	6250 13,400	4150 8,950	4550 9,750	3050 6,600	4250 9,350	2900 6,350	7860 310
-1500 mm -60 in	kg lb	*10 500 *23,900	*10 500 *23,900	9650 20,750	6150 13,200	6200 13,300	4100 8,850			4650 10,250	3150 6,950	7350 290
-3000 mm -120 in	kg lb	*13 200 *28,600	12 100 25,900	*9600 *20,700	6250 13,400	6250 13,450	4150 9,000			5650 12,550	3800 8,450	6470 260
-4500 mm -180 in	kg lb			*7150 *15,000	6500 14,000					*6200 *13,550	5650 12,800	4980 200



ISO 10567:2007



*Indicates that the load is limited by hydraulic lifting capacity rather than tipping load. The above loads are in compliance with hydraulic excavator lift capacity standard ISO 10567:2007. They do not exceed 87% of hydraulic lifting capacity or 75% of tipping load. Weight of all lifting accessories must be deducted from the above lifting capacities. Lifting capacities are based on the machine standing on a firm, uniform supporting surface. The use of a work tool attachment point to handle/lift objects, could affect the machine lift performance.

Lift capacity stays with ±5% for all available track shoes.

Always refer to the appropriate Operation and Maintenance Manual for specific product information.

320 GC Hydraulic Excavator Specifications

Bucket Specifications and Compatibility

	Linkage	Width		Capacity		Weight		Fill	Reach Boom	
		mm	in	m ³	yd ³	kg	lb		%	R2.5 (8'2")
Pin-On (No Quick Coupler)										
General Duty	B	600	24	0.46	0.61	555	1,223	100	●	●
	B	750	30	0.64	0.84	626	1,380	100	●	●
	B	1200	48	1.19	1.56	812	1,789	100	⊙	⊖
	B	1300	51	1.30	1.70	835	1,841	100	⊖	⊖
	B	1400	55	1.43	1.87	879	1,937	100	○	○
General Duty Excavation	B	1581	62	1.10	1.44	797	1,157	100	⊙	⊙
Heavy Duty	B	1050	42	1.00	1.31	892	1,967	100	●	⊙
	B	1200	48	1.19	1.56	917	2,022	100	⊙	⊖
	B	1300	52	1.30	1.70	974	2,148	100	⊖	○
Severe Duty	B	1050	42	1.00	1.31	948	2,091	90	●	●
Severe Duty Spade	B	1200	48	1.20	1.57	1011	2,229	90	⊙	⊖
Maximum load with pin-on (payload + bucket)								kg	2610	2425
								lb	5,754	5,346
	Linkage	Width		Capacity		Weight		Fill	Reach Boom	
		mm	in	m ³	yd ³	kg	lb		%	R2.5 (8'2")
With Cat Pin Grabber Coupler										
General Duty	B	600	24	0.46	0.61	555	1,223	100	●	●
	B	750	30	0.64	0.84	626	1,380	100	●	●
	B	1200	48	1.19	1.56	812	1,789	100	⊖	○
	B	1300	51	1.30	1.70	835	1,841	100	○	○
	B	1400	55	1.43	1.87	879	1,937	100	○	◇
Heavy Duty	B	1050	42	1.00	1.31	892	1,967	100	⊖	⊖
	B	1200	48	1.19	1.56	917	2,022	100	○	○
	B	1300	52	1.30	1.70	974	2,148	100	○	◇
Severe Duty	B	1050	42	1.00	1.31	948	2,091	90	⊙	⊖
Severe Duty Spade	B	1200	48	1.20	1.57	1011	2,229	90	⊖	○
Maximum load with coupler (payload + bucket)								kg	2189	2006
								lb	4,827	4,423

The above loads are in compliance with hydraulic excavator standard EN474-5:2006+A3:2013, they do not exceed 87% of hydraulic lifting capacity or 75% of tipping capacity with front linkage fully extended at ground line with bucket curled.

Capacity based on ISO 7451:2007.

Bucket weight with General Duty tips.

Maximum Material Density:

- 2100 kg/m³ (3,500 lb/yd³)
- ⊙ 1800 kg/m³ (3,000 lb/yd³)
- ⊖ 1500 kg/m³ (2,500 lb/yd³)
- 1200 kg/m³ (2,000 lb/yd³)
- ◇ 900 kg/m³ (1,500 lb/yd³)

Caterpillar recommends using appropriate work tools to maximize the value customers receive from our products. Use of work tools, including buckets, which are outside of Caterpillar's recommendations or specifications for weight, dimensions, flows, pressures, etc. may result in less-than-optimal performance, including but not limited to reductions in production, stability, reliability, and component durability. Improper use of a work tool resulting in sweeping, prying, twisting and/or catching of heavy loads will reduce the life of the boom and stick.

320 GC Hydraulic Excavator Specifications

Attachments Offering Guide

Not all Attachments are available in all regions. Consult your Cat dealer for configurations available in your region.

Match

* Working range front only

PIN-ON ATTACHMENTS

Counterweight		3700 kg (8,200 lb)	
Boom Type		Reach	
Stick Length		2.5 m (8'2")	2.9 m (9'6")
Hydraulic Hammers	H115 S	✓	✓
	H120 GC	✓	✓
	H120 GC S	✓	✓
	H120 S	✓	✓
	H130 GC	✓	✓
	H130 GC S	✓	✓
	H130 S	✓	✓
Multi-Processors	MP318 Concrete Cutter Jaw	✓	✓
	MP318 Demolition Jaw	✓	✓
	MP318 Pulverizer Jaw	✓	✓
	MP318 Shear Jaw	✓	✓
	MP318 Universal Jaw	✓	✓
Demolition and Sorting Grapples	G317 GC	✓	✓
	G318	✓	✓
	G318 WH-800	✓	✓
	G318 WH-1100	✓	✓
Mobile Scrap and Demolition Shears	S3025 Flat Top	✓	✓*
Pulverizers	P218 Secondary Pulverizer	✓	✓
	P318 Primary Pulverizer	✓	✓
Compactors (Vibratory Plate)	CVP110	✓	✓

(continued on next page)

320 GC Hydraulic Excavator Specifications

Attachments Offering Guide *(continued)*

Not all Attachments are available in all regions. Consult your Cat dealer for configurations available in your region.

No Match
 1800 kg/m³ (3,000 lb/yd³)
 1200 kg/m³ (2,000 lb/yd³)
 600 kg/m³ (1,000 lb/yd³)

PIN-ON ATTACHMENTS *(continued)*

Counterweight		3700 kg (8,200 lb)		
Boom Type		Reach		
Stick Length		2.5 m (8'2")	2.9 m (9'6")	
Orange Peel Grapples	GSH420-500	●	●	
	GSH420-600	●	●	
	GSH420-750	●	●	
	GSH425-750	○	○	
	GSH425-950	○		
	GSH520-500	●	●	
	GSH520-600	●	●	
	GSH520-750	●	○	
	GSH525-750	○		
	GSV420-400	●	●	
	GSV420-500	●	●	
	GSV420-600	●	●	
	GSV420-750	●	●	
	GSV420-1250	◇	◇	
	GSV425-600	●	●	
	GSV425-750	○	○	
	GSV425-950	○		
	GSV425-1550	◇		
	GSV520-400	●	●	
	GSV520-500	●	●	
	GSV520-600	●	●	
	GSV520-750	●	○	
	GSV520 GC-400	●	●	
	GSV520 GC-500	●	●	
	GSV520 GC-600	●	●	
	GSV520 GC-750	●	●	
	GSV525-600	○	○	
	GSV525-750	○		
	Clamshell Grapples	CTV15-1000	○	○
		CTV15-1200	○	

(continued on next page)

320 GC Hydraulic Excavator Specifications

Attachments Offering Guide *(continued)*

Not all Attachments are available in all regions. Consult your Cat dealer for configurations available in your region.

Match
 * Working range front only
 No Match

CAT PIN GRABBER COUPLER ATTACHMENTS

Counterweight		3700 kg (8,200 lb)	
Boom Type		Reach	
Stick Length		2.5 m (8'2")	2.9 m (9'6")
Hydraulic Hammers	H115 S	✓	✓
	H120 GC	✓	✓
	H120 GC S	✓	✓
	H120 S	✓	✓
	H130 S	✓	✓
Multi-Processors	MP318 Concrete Cutter Jaw	✓*	
	MP318 Demolition Jaw	✓*	
	MP318 Shear Jaw	✓	✓*
	MP318 Universal Jaw	✓*	
Demolition and Sorting Grapples	G317 GC	✓	✓
	G318	✓*	
	G318 WH-800	✓	✓*
Pulverizers	P218 Secondary Pulverizer	✓*	
Compactors (Vibratory Plate)	CVP110	✓	✓

(continued on next page)

320 GC Hydraulic Excavator Specifications

Attachments Offering Guide *(continued)*

Not all Attachments are available in all regions. Consult your Cat dealer for configurations available in your region.

Match * Working range front only No Match

CW-40S DEDICATED COUPLER ATTACHMENTS

Counterweight		3700 kg (8,200 lb)	
Boom Type		Reach	
Stick Length		2.5 m (8'2")	2.9 m (9'6")
Hydraulic Hammers	H115 S	✓	✓
	H120 GC S	✓	✓
	H120 S	✓	✓
	H130 S	✓	✓
Multi-Processors	MP318 Concrete Cutter Jaw	✓	✓
	MP318 Demolition Jaw	✓	✓
	MP318 Pulverizer Jaw	✓	✓*
	MP318 Shear Jaw	✓	✓
	MP318 Universal Jaw	✓	✓*
Demolition and Sorting Grapples	G317 GC	✓	✓
	G318	✓	✓
	G318 WH-800	✓	✓
	G318 WH-1100	✓	✓*
Mobile Scrap and Demolition Shears	S3025 Flat Top	✓*	
Pulverizers	P218 Secondary Pulverizer	✓	✓*
	P318 Primary Pulverizer	✓	✓*
Compactors (Vibratory Plate)	CVP110	✓	✓

(continued on next page)

320 GC Hydraulic Excavator Specifications

Attachments Offering Guide (continued)

Not all Attachments are available in all regions. Consult your Cat dealer for configurations available in your region.

Match
 * Working range front only
 No Match

CW-40 DEDICATED COUPLER ATTACHMENTS

Counterweight		3700 kg (8,200 lb)	
Boom Type		Reach	
Stick Length		2.5 m (8'2")	2.9 m (9'6")
Hydraulic Hammers	H115 S	✓	✓
	H120 GC	✓	✓
	H120 GC S	✓	✓
	H120 S	✓	✓
	H130 GC S	✓*	
	H130 S	✓	✓
Multi-Processors	MP318 Concrete Cutter Jaw	✓	✓
	MP318 Demolition Jaw	✓	✓
	MP318 Pulverizer Jaw	✓	✓*
	MP318 Shear Jaw	✓	✓
	MP318 Universal Jaw	✓	✓
Demolition and Sorting Grapples	G317 GC	✓	✓
	G317 GC Fixed CAN	✓	✓
	G318	✓	✓
	G318 Fixed CAN	✓	✓
	G318 WH-800	✓	✓
	G318 WH-1100	✓	✓*
Mobile Scrap and Demolition Shears	S3025 Flat Top	✓*	
Pulverizers	P218 Secondary Pulverizer	✓	✓*
	P318 Primary Pulverizer	✓	✓*
Compactors (Vibratory Plate)	CVP110	✓	✓

BOOM-MOUNT ATTACHMENTS

Counterweight		3700 kg (8,200 lb)	
Boom Type		Reach	
Mobile Scrap and Demolition Shears	S2050	✓	
	S3035 Flat Top		✓

Standard and Optional Equipment

Standard and optional equipment may vary. Consult your Cat dealer for details.

	Standard	Optional		Standard	Optional
BOOM, STICKS AND LINKAGES			CAT TECHNOLOGY		
5.7 m (18'8") Reach boom	✓		VisionLink®	✓*	
2.9 m (9'6") Reach stick	✓		VisionLink Productivity		✓
2.5 m (8'2") Reach stick		✓	Remote Flash	✓	
Bucket linkage, B1-family with lifting eye ⁽¹⁾	✓		ELECTRICAL SYSTEM		
Bucket linkage, B1-family without lifting eye ⁽²⁾	✓		1,000 CCA maintenance-free batteries (×2)	✓	
CAB			Centralized electrical disconnect switch	✓	
ROPS	✓		Programmable time-delay LED working lights	✓	
High-resolution 203 mm (8") LCD touchscreen monitor	✓		LED chassis light and Left Hand (LH) boom light – 1,800 lumens	✓	
Auto bi-level air conditioner	✓		LED chassis light, LH and Right Hand (RH) boom lights, cab lights – 1,800 lumens		✓
Keyless push-to-start engine control	✓		ENGINE		
Height-adjustable console, three steps with tool	✓		Cat C4.4 single turbo diesel engine	✓	
Fixed left-side console	✓		Two selectable power modes	✓	
Mechanical-suspension seat	✓		One-touch low idle with automatic engine speed control	✓	
51 mm (2") seat belt	✓		Automatic engine idle shutdown	✓	
Integrated Bluetooth® radio (includes USB/Auxiliary ports) ⁽³⁾	✓		Work up to 3000 m (9,842.5 ft) above sea level without engine power de-rating	✓	
Integrated Bluetooth radio with DAB (includes USB/Aux ports) ⁽⁴⁾	✓		52° C (125° F) high-ambient cooling capacity	✓	
24V DC outlet	✓		Cold starting capability for –32° C (–25° F)	✓	
Document storage	✓		Double element air filter with integrated pre-cleaner	✓	
Overhead storage and rear storage with nets	✓		Electric fuel priming pump	✓	
Beverage holder	✓		Electric cooling fans with auto-reverse function	✓	
Cup holder	✓				
Openable two-piece front window	✓				
Rear window emergency exit	✓				
Radial wiper with washer	✓				
Openable steel hatch	✓				
LED dome light	✓				
Roller front sunscreen	✓				
Roller rear sunscreen		✓			
Washable floor mat	✓				
Beacon ready	✓				

(continued on next page)

⁽¹⁾All regions except Kingdom of Saudi Arabia.

⁽²⁾Kingdom of Saudi Arabia only.

⁽³⁾All regions except Gulf states

⁽⁴⁾Gulf states only

*Connect subscription only. Additional subscriptions are available. Contact your Cat dealer for availability.

320 GC Standard and Optional Equipment

Standard and Optional Equipment *(continued)*

Standard and optional equipment may vary. Consult your Cat dealer for details.

	Standard	Optional		Standard	Optional
HYDRAULIC SYSTEM			SERVICE AND MAINTENANCE		
Boom and stick regeneration circuits	✓		Scheduled Oil Sampling (S·O·S SM) ports	✓	
Electronic main control valve	✓		Grouped location for engine oil and fuel filters	✓	
Auto warm up	✓		Ground-level second dipstick for engine oil	✓	
Auto two-speed travel	✓		Radiator screen		✓
Boom and stick drift reduction valve	✓		Side entry to service platform	✓	
Element type main hydraulic filter	✓		QuickEvac TM maintenance ready		✓
Three button joysticks	✓		Integrated vehicle health management system	✓	
Slider joysticks		✓	UNDERCARRIAGE AND STRUCTURES		
Tandem type electronic main pump	✓		Medium undercarriage	✓	
Hammer return filter circuit		✓	600 mm (24") triple grouser track shoes		✓
Basic Tool Control (one pump, one way high-pressure flow)		✓	Tie-down points on base frame	✓	
Tool Control (two pump, one/two way high-pressure flow)		✓	Center track guiding guard	✓	
Quick coupler circuit for Cat pin grabber		✓	Bottom guards	✓	
Operating pattern film (four way)	✓		Swivel guard		✓
Multi viscous hydraulic oil		✓	Travel motor guards	✓	
SAFETY AND SECURITY			Grease lubricated track links	✓	
Auto hammer stop	✓		3700 kg (8,200 lb) counterweight	✓	
Rearview camera and right-side mirror	✓				
Rear and right-hand-side view cameras		✓			
Right-hand-side view camera ⁽³⁾		✓			
Cab mirror for right-side track edge		✓			
Neutral lever (lock out) for all controls	✓				
Anti-skid plate and countersunk bolts on service platform	✓				
Ground-level accessible secondary engine shutoff switch in cab	✓				
RH handrail and handhold (ISO 2867:2011 compliant)	✓				
Travel alarm		✓			
Lockable disconnect switch	✓				
Swing alarm		✓			

Dealer Installed Kit and Attachments

Attachments may vary. Consult your Cat dealer for details.

CAB

- Lower radial wiper
- Rain protector plus cab light cover
- Polycarbonate roof hatch
- Sun visor, slider
- Laminated P5A glass front windshield
- LH/RH electrical pedal for tool control
- Armrest kit
- Dual exit rear window kit
- 75 mm (3") retractable seat belt
- Lunch box net
- Rear storage
- Tool box

GUARDS

- Swivel guard
- Side rubber bumper guard
- Falling object guard system
- Mesh guard full front
- Mesh guard half front
- Full protecting vandalism guard

MAINTENANCE

- Duct ready kit

SAFETY AND SECURITY

- Bluetooth receiver

320 GC Environmental Declaration

The following information applies to the machine at the time of final manufacture as configured for sale in the regions covered in this document. The content of this declaration is valid as of the date issued; however, content related to machine features and specifications are subject to change without notice. For additional information, please see the machine's Operation and Maintenance Manual.

For more information on sustainability in action and our progress, please visit <https://www.caterpillar.com/en/company/sustainability>.

Engine

- The Cat® C4.4 engine meets Brazil MAR-1 emission standards, equivalent to U.S. EPA Tier 3 and EU Stage IIIA.
- Cat engines are compatible with diesel fuel blended with the following lower-carbon intensity fuels** up to:
 - ✓ 100% biodiesel FAME (fatty acid methyl ester)*
 - ✓ 100% renewable diesel, HVO (hydrogenated vegetable oil) and GTL (gas-to-liquid) fuels

Refer to guidelines for successful application. Please consult your Cat dealer or "Caterpillar Machine Fluids Recommendations" (SEBU6250) for details.

**For use of blends higher than 20% biodiesel, consult your Cat dealer.*

***Tailpipe greenhouse gas emissions from lower-carbon intensity fuels are essentially the same as traditional fuels.*

Air Conditioning System

- The air conditioning system on this machine contains the fluorinated greenhouse gas refrigerant R134a (Global Warming Potential = 1430). The system contains 0.85 kg (1.9 lb) of refrigerant which has a CO₂ equivalent of 1.216 metric tonnes (1.340 tons).

Paint

- Based on best available knowledge, the maximum allowable concentration, measured in parts per million (PPM), of the following heavy metals in paint are:
 - Barium < 0.01%
 - Cadmium < 0.01%
 - Chromium < 0.01%
 - Lead < 0.01%

Sound Performance

ISO 6395 (external) – 99 dB(A)

ISO 6396 (inside cab) – 70 dB(A)

- Hearing protection may be needed when operating with an open operator station and cab (when not properly maintained or doors/windows open) for extended periods or in a noisy environment.

Oils and Fluids

- Caterpillar factory fills with ethylene glycol coolants. Cat Diesel Engine Antifreeze/Coolant (DEAC) and Cat Extended Life Coolant (ELC) can be recycled. Consult your Cat dealer for more information.
- Cat Bio HYDO™ Advanced is an EU Ecolabel approved biodegradable hydraulic oil.
- Additional fluids are likely to be present, please consult the Operations and Maintenance Manual or the Application and Installation guide for complete fluid recommendations and maintenance intervals.

Features and Technology

- The following features and technology may contribute to fuel savings and/or carbon reduction. Features may vary. Consult your Cat dealer for details.
 - Advanced hydraulic systems balance power and efficiency
 - Smart mode matches machine power to digging requirements automatically
 - Eco mode minimizes fuel consumption for light applications
 - Cut maintenance costs up to 20% with extended service intervals
 - Programmable high-efficiency cooling fans run only when needed
 - The latest hydraulic oil filter provides longer life with a 3,000-hour replacement interval

For more complete information on Cat products, dealer services, and industry solutions, visit us on the web at www.cat.com

© 2023 Caterpillar
All rights reserved

Materials and specifications are subject to change without notice. Featured machines in photos may include additional equipment. See your Cat dealer for available options.

CAT, CATERPILLAR, LET'S DO THE WORK, their respective logos, "Caterpillar Corporate Yellow," the "Power Edge" and Cat "Modern Hex" trade dress as well as corporate and product identity used herein, are trademarks of Caterpillar and may not be used without permission. VisionLink is a trademark of Caterpillar Inc., registered in the United States and in other countries.

AEXQ2210-09 (09-2023)
Replaces AEXQ2210-08
Build Number: 07G
(Afr-ME)

