



# 320

## Hydraulic Excavator

# Technical Specifications

Configurations and features may vary by region. Please consult your Cat® dealer for availability in your area.

### Table of Contents

<b>Specifications</b> .....	<b>2</b>
Engine .....	2
Swing Mechanism .....	2
Weights .....	2
Track .....	2
Drive .....	2
Hydraulic System .....	2
Service Refill Capacities .....	2
Standards .....	2
Sound Performance .....	2
Operating Weight and Ground Pressure .....	3
Major Component Weights .....	3
Dimensions .....	4
Working Ranges .....	5
Bucket Specifications and Compatibility .....	7
Attachments Offering Guide .....	8
<b>Standard and Optional Equipment</b> .....	<b>9</b>
<b>Dealer Installed Kits and Attachments</b> .....	<b>11</b>
<b>Cab Options</b> .....	<b>12</b>

# 320 Hydraulic Excavator Specifications

## Engine

Engine Model	Cat® C7.1	
Engine Power (ISO 9249)	117 kW	157 hp
Engine Power (ISO 14396)	118 kW	158 hp
Bore	105 mm	4 in
Stroke	135 mm	5 in
Displacement	7.01 L	428 in <sup>3</sup>

- The 320 meets China Nonroad Stage III emission standards.
- Recommended for use up to 4500 m (14,764 ft) altitude with engine power derate above 3000 m (9,842.5 ft).
- Net power advertised is the power available at the flywheel when the engine is equipped with fan, air cleaner, muffler and alternator.
- Rating at 1,800 rpm.

## Swing Mechanism

Swing Speed	11.25 rpm	
Maximum Swing Torque	82 kN·m	60,300 lbf-ft

## Weights

Operating Weight	22 400 kg	49,400 lb
------------------	-----------	-----------

- HD Reach boom, HD R2.9 (9'6") stick, HD 1.19 m<sup>3</sup> (1.56 yd<sup>3</sup>) bucket, 600 mm (24") triple grouser shoes, 4.2 mt (9,300 lb) counterweight.

## Track

Standard Track Shoe Width	600 mm	24 in
Number of Shoes (each side)	49	
Number of Track Rollers (each side)	8	
Number of Carrier Rollers (each side)	2	

## Drive

Maximum Gradeability	35°/70%	
Maximum Travel Speed	5.7 km/h	3.5 mph
Maximum Drawbar Pull	205 kN	45,996 lbf

## Hydraulic System

Main System – Maximum Flow – Implement	429 L/min (215 × 2 pumps)	113 gal/min (57 × 2 pumps)
Maximum Pressure – Equipment – Normal	35 000 kPa	5,075 psi
Maximum Pressure – Equipment – Lift Mode	38 000 kPa	5,510 psi
Maximum Pressure – Travel	34 300 kPa	4,974 psi
Maximum Pressure – Swing	27 500 kPa	3,998 psi
Boom Cylinder – Bore	120 mm	5 in
Boom Cylinder – Stroke	1260 mm	50 in
Stick Cylinder – Bore	140 mm	6 in
Stick Cylinder – Stroke	1504 mm	59 in
Bucket Cylinder – Bore	120 mm	5 in
Bucket Cylinder – Stroke	1104 mm	43 in

## Service Refill Capacities

Fuel Tank Capacity	345 L	86.6 gal
Cooling System	25 L	6.6 gal
Engine Oil	25 L	6.6 gal
Swing Drive (each)	12 L	3.2 gal
Final Drive (each)	5 L	1.3 gal
Hydraulic System (including tank)	234 L	61.8 gal
Hydraulic Tank	115 L	30.4 gal

## Standards

Brakes	ISO 10265:2008
Cab/ROPS	ISO 12117-2:2008
Cab	ISO 10262:1998 Level I
FOGS (optional)	ISO 10262:1998 Level II

## Sound Performance

ISO 6395:2008 (external)	100 dB(A)
ISO 6396:2008 (inside cab)	70 dB(A)

- Hearing protection may be needed when operating with an open operator station and cab (when not properly maintained or doors/windows open) for extended periods or in a noisy environment.

# 320 Hydraulic Excavator Specifications

## Operating Weight and Ground Pressure

	600 mm (24") Triple Grouser Shoes			
	Weight		Ground Pressure	
<b>4.2 mt (9,300 lb) Counterweight + Base Machine</b>				
HD Reach Boom + HD R2.9 (9'6") Stick + 1.19 m <sup>3</sup> (1.56 yd <sup>3</sup> ) HD Bucket	22 400 kg	49,400 lb	46.6 kPa	6.8 psi

All operating weights include a 90% fuel tank with 75 kg (165 lb) operator.

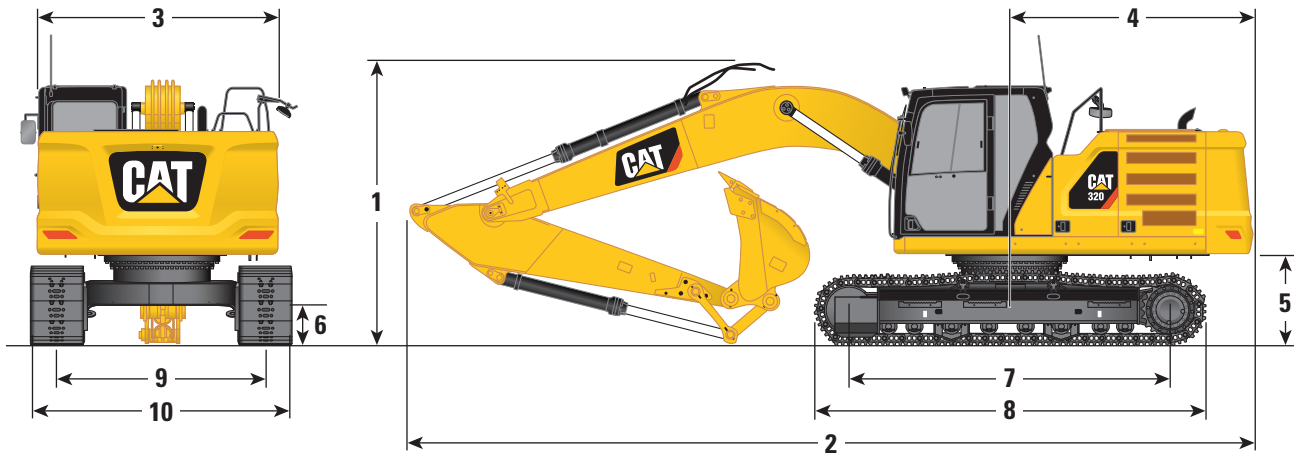
## Major Component Weights

	kg	lb
Base Machine (with 4.2 mt [9,300 lb] counterweight, semi-HD swing frame, standard base frame with HD track rollers and standard carrier rollers for long undercarriage, without boom cylinder – does not include 90% fuel and 75 kg [165 lb] operator)	14 900	32,800
Track Shoes:		
600 mm (24") Width, 10 mm (0.39") Thick Triple Grouser Track Shoes	2690	5,900
600 mm (24") Width, 13 mm (0.51") Thick Double Grouser Track Shoes	3080	6,800
Two Boom Cylinders	340	750
Weight of 90% Fuel Tank and 75 kg (165 lb) Operator	310	680
Counterweights:		
3.7 mt (8,200 lb) Counterweight	3700	8,200
4.2 mt (9,300 lb) Counterweight	4200	9,300
4.7 mt (10,400 lb) Counterweight	4700	10,400
Swing Frames:		
Standard Swing Frame	1890	4,170
Semi-HD Swing Frame	1910	4,210
Standard and Long Undercarriage:		
Standard Base Frame with HD Track Rollers and Standard Carrier Rollers for Long Undercarriage	4390	9,700
HD Base Frame with SD Track Rollers and Standard Carrier Rollers for Long Undercarriage	4690	10,300
Booms (including lines, pins, stick cylinder):		
HD Reach Boom (5.7 m/18'8")	2010	4,400
Super Long Reach Boom (8.85 m/29'0")	2170	4,800
Sticks (including lines, pins, bucket cylinder, bucket linkage):		
HD Reach Stick (R2.9B1/9'6")	1160	2,600
HD Reach Stick (R2.5B1/8'2")	1150	2,500
Super Long Reach Stick (6.28A/20'7")	1340	3,000
Buckets (without linkage):		
1.0 m <sup>3</sup> (1.31 yd <sup>3</sup> ) HD	890	2,000
1.0 m <sup>3</sup> (1.31 yd <sup>3</sup> ) SD	970	2,100
1.14 m <sup>3</sup> (1.14 yd <sup>3</sup> ) GD	820	1,800
1.19 m <sup>3</sup> (1.56 yd <sup>3</sup> ) HD	940	2,100
0.53 m <sup>3</sup> (0.69 yd <sup>3</sup> ) GD	410	900

# 320 Hydraulic Excavator Specifications

## Dimensions

All dimensions are approximate and may vary depending on bucket selection.



### Boom Options

**HD Reach Boom**  
5.7 m (18'8")

**SLR Boom**  
8.85 m (29'0")

### Stick Options

**HD Reach Sticks**  
R2.9B1 (9'6")

R2.5B1 (8'2")

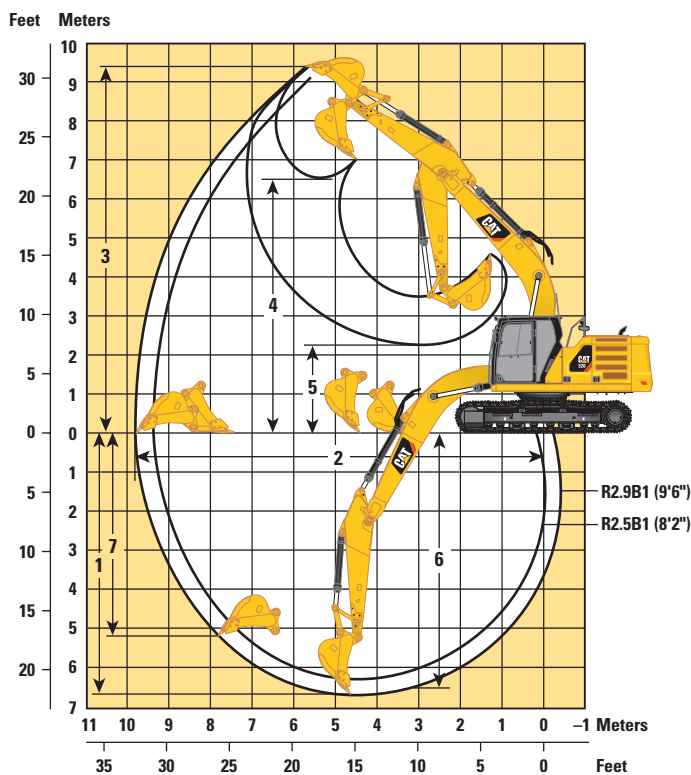
**SLR Stick**  
6.28A (20'7")

	HD Reach Boom 5.7 m (18'8")		SLR Boom 8.85 m (29'0")	
	HD Reach Sticks R2.9B1 (9'6")		SLR Stick 6.28A (20'7")	
<b>1</b> Machine Height:				
Top of Cab Height	2960 mm	9'9"	2960 mm	9'9"
Top of FOGS Height	3100 mm	10'2"	3100 mm	10'2"
Handrails Height	2950 mm	9'8"	2950 mm	9'8"
With Boom/Stick/Bucket Installed	3160 mm	10'4"	3160 mm	10'4"
With Boom/Stick Installed	2910 mm	9'7"	2910 mm	9'7"
With Boom Installed	2480 mm	8'2"	2480 mm	8'2"
<b>2</b> Machine Length:				
With Boom/Stick/Bucket Installed	9530 mm	31'3"	9530 mm	31'3"
With Boom/Stick Installed	9500 mm	31'2"	9500 mm	31'2"
With Boom Installed	8450 mm	27'9"	8450 mm	27'9"
<b>3</b> Upperframe Width without Walkways	2780 mm	9'1"	2780 mm	9'1"
<b>4</b> Tail Swing Radius	2830 mm	9'3"	2830 mm	9'3"
<b>5</b> Counterweight Clearance	1050 mm	3'5"	1050 mm	3'5"
<b>6</b> Ground Clearance	470 mm	1'7"	470 mm	1'7"
<b>7</b> Length to Center of Rollers	3650 mm	12'0"	3650 mm	12'0"
<b>8</b> Track Length	4450 mm	14'7"	4450 mm	14'7"
<b>9</b> Track Gauge	2380 mm	7'9"	2380 mm	7'9"
Track Width:				
600 mm (24") Shoes	600 mm	24"	600 mm	24"
<b>10</b> Undercarriage Width (with steps/without steps):				
600 mm (24") Shoes	2980 mm	9'9"	2980 mm	9'9"
Bucket Type	HD		GD	
Bucket Capacity	1.19 m <sup>3</sup>	1.56 yd <sup>3</sup>	0.53 m <sup>3</sup>	0.69 yd <sup>3</sup>
Bucket Tip Radius	1570 mm	5'2"	1220 mm	4'0"

# 320 Hydraulic Excavator Specifications

## Working Ranges

All dimensions are approximate and may vary depending on bucket selection.



### Boom Option

**HD Reach Boom**  
5.7 m (18'8")

### Stick Options

**HD Reach Sticks**

**R2.9B1 (9'6")**

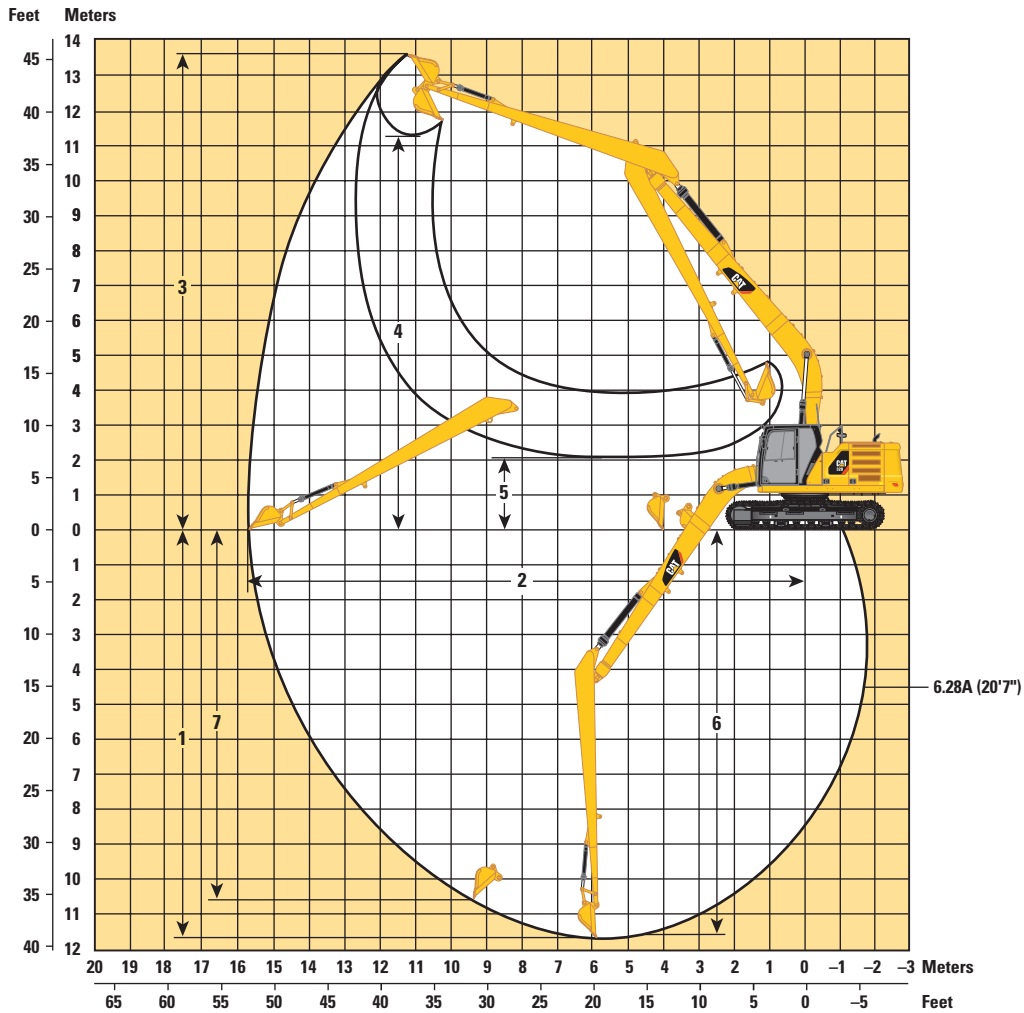
**R2.5B1 (8'2")**

	R2.9B1 (9'6")	R2.5B1 (8'2")
<b>1</b> Maximum Digging Depth	6720 mm	22'1"
<b>2</b> Maximum Reach at Ground Line	9860 mm	32'4"
<b>3</b> Maximum Cutting Height	9370 mm	30'9"
<b>4</b> Maximum Loading Height	6490 mm	21'4"
<b>5</b> Minimum Loading Height	2170 mm	7'1"
<b>6</b> Maximum Depth Cut for 2440 mm (8'0") Level Bottom	6550 mm	21'6"
<b>7</b> Maximum Vertical Wall Digging Depth	5190 mm	17'0"
Bucket Digging Force (ISO)	150 kN	33,811 lbf
Stick Digging Force (ISO)	106 kN	23,911 lbf
Bucket Type	HD	HD
Bucket Capacity	1.19 m <sup>3</sup>	1.56 yd <sup>3</sup>
Bucket Tip Radius	1570 mm	5'2"

# 320 Hydraulic Excavator Specifications

## Working Ranges

All dimensions are approximate and may vary depending on bucket selection.



### Boom Option

SLR Boom  
8.85 m (29'0")

### Stick Option

SLR Stick  
6.28A (20'7")

1 Maximum Digging Depth	11 690 mm	38'4"
2 Maximum Reach at Ground Line	15 730 mm	51'7"
3 Maximum Cutting Height	13 610 mm	44'8"
4 Maximum Loading Height	11 290 mm	37'0"
5 Minimum Loading Height	2080 mm	6'10"
6 Maximum Depth Cut for 2440 mm (8'0") Level Bottom	11 590 mm	38'0"
7 Maximum Vertical Wall Digging Depth	10 560 mm	34'8"
Bucket Digging Force (ISO)	60 kN	13,549 lbf
Stick Digging Force (ISO)	49 kN	10,935 lbf
Bucket Type	GD	
Bucket Capacity	0.53 m <sup>3</sup>	0.69 yd <sup>3</sup>
Bucket Tip Radius	1230 mm	40"

# 320 Hydraulic Excavator Specifications

## Bucket Specifications and Compatibility

	Linkage	Width		Capacity		Weight		Fill %	Counterweight				
		mm	in	m³	yd³	kg	lb		HD Reach Boom				4.7 mt (10,400 lb)
									HD R2.5 (8'2")	HD R2.9 (9'6")	HD R2.5 (8'2")	HD R2.9 (9'6")	SLR Boom 6.28A (20'7")
<b>Pin-On (No Quick Coupler)</b>													
Utility Duty	B	1150	46	0.90	1.18	725	1,599	100	●	●	●	●	
	B	1250	50	1.00	1.31	758	1,672	100	●	⊙	●	●	
General Duty Excavation	B	1150	46	0.90	1.18	758	1,671	100	●	●	●	●	
	B	1250	50	1.00	1.31	792	1,747	100	●	⊙	●	●	
	B	1400	56	1.14	1.49	858	1,891	100	⊙	X	●	X	
Heavy Duty	B	1050	43	1.00	1.31	884	1,948	100	●	⊙	●	●	
	B	1200	49	1.19	1.56	955	2,105	100	⊖	⊖	⊙	⊖	
	B	1350	54	1.38	1.81	1018	2,244	100	○	X	⊖	X	
Severe Duty	B	1100	43	1.00	1.31	965	2,128	90	●	⊙	●	●	
	B	1250	49	1.19	1.56	1063	2,343	90	⊙	⊖	⊙	⊙	
	B	900	36	0.79	1.03	853	1,881	90	●	●	●	●	
General Duty	312	900	36	0.53	0.69	403	888	100					◇
Ditch Cleaning	312	1200	48	0.57	0.74	386	851	100					◇
Maximum load with pin-on (payload + bucket)								kg	2955	2735	3145	2915	880
								lb	6,515	6,030	6,934	6,426	1,940
<b>With Cat Pin Grabber Coupler</b>													
Utility Duty	B	1150	46	0.90	1.18	725	1,599	100	●	⊙	●	●	
	B	1250	50	1.00	1.31	758	1,672	100	⊙	⊖	●	⊙	
General Duty Excavation	B	1150	46	0.90	1.18	758	1,671	100	⊙	⊙	●	⊙	
	B	1250	50	1.00	1.31	792	1,747	100	⊙	⊖	⊙	⊙	
	B	1400	56	1.14	1.49	858	1,891	100	⊖	○	⊖	⊖	
Heavy Duty	B	1050	43	1.00	1.31	884	1,948	100	⊖	⊖	⊙	⊖	
	B	1200	49	1.19	1.56	955	2,105	100	○	○	⊖	○	
	B	1350	54	1.38	1.81	1018	2,244	100	◇	◇	○	◇	
Severe Duty	B	1100	43	1.00	1.31	965	2,128	90	⊙	⊖	●	⊙	
	B	1250	49	1.19	1.56	1063	2,343	90	○	○	⊖	○	
	B	900	36	0.79	1.03	853	1,881	90	●	●	●	●	
Maximum load with coupler (payload + bucket)								kg	2533	2314	2772	2539	461
								lb	5,585	5,102	6,110	5,597	1,017

The above loads are in compliance with hydraulic excavator standard EN474 5:2006 + A3:2013, they do not exceed 87% of hydraulic lifting capacity or 75% of tipping capacity with front linkage fully extended at ground line with bucket curled.

Capacity based on ISO 7451:2007.

Bucket weight with General Duty tips.

### Maximum Material Density:

- 2100 kg/m³ (3,500 lb/yd³)
- ⊙ 1800 kg/m³ (3,000 lb/yd³)
- ⊖ 1500 kg/m³ (2,500 lb/yd³)
- 1200 kg/m³ (2,000 lb/yd³)
- ◇ 900 kg/m³ (1,500 lb/yd³)
- X Not Recommended

Caterpillar recommends using appropriate work tools to maximize the value customers receive from our products. Use of work tools, including buckets, which are outside of Caterpillar's recommendations or specifications for weight, dimensions, flows, pressures, etc. may result in less-than-optimal performance, including but not limited to reductions in production, stability, reliability, and component durability. Improper use of a work tool resulting in sweeping, prying, twisting and/or catching of heavy loads will reduce the life of the boom and stick.

# 320 Hydraulic Excavator Specifications

## Attachments Offering Guide – China

### PIN-ON ATTACHMENTS

Undercarriage		Long Undercarriage			
Counterweight		3.7 mt (8,200 lb)		4.2 mt (9,300 lb)	
Boom Type		HD Reach Boom		HD Reach Boom	
Stick Length		HD 2.5 m (8'2")	HD 2.9 m (9'6")	HD 2.5 m (8'2")	HD 2.9 m (9'6")
Hydraulic Hammers	H115E S	✓	✓	✓	✓
	H120 GC	✓	✓	✓	✓
	H120 GC Side-mount	✓	✓	✓	✓
	H120 GC S	✓	✓	✓	✓
	H120E S	✓	✓	✓	✓
	H130E S	✓	✓	✓	✓
Vibratory Plate Compactors	CVP110	✓	✓	✓	✓
Cat Pin Grabber Couplers		✓	✓	✓	✓

### CAT PIN GRABBER COUPLER ATTACHMENTS

Undercarriage		Long Undercarriage			
Counterweight		3.7 mt (8,200 lb)		4.2 mt (9,300 lb)	
Boom Type		HD Reach Boom		HD Reach Boom	
Stick Length		HD 2.5 m (8'2")	HD 2.9 m (9'6")	HD 2.5 m (8'2")	HD 2.9 m (9'6")
Hydraulic Hammers	H115E S	✓	✓	✓	✓
	H120 GC	✓	✓	✓	✓
	H120 GC Side-mount	✓	✓	✓	✓
	H120 GC S	✓	✓	✓	✓
	H120E S	✓	✓	✓	✓
	H130E S	✓	✓	✓	✓
Vibratory Plate Compactors	CVP110	✓	✓	✓	✓

## Attachments Offering Guide – Hong Kong and Taiwan

### PIN-ON ATTACHMENTS

Undercarriage		Long Undercarriage			
Counterweight		3.7 mt (8,200 lb)		4.2 mt (9,300 lb)	
Boom Type		HD Reach Boom		HD Reach Boom	
Stick Length		HD 2.5 m (8'2")	HD 2.9 m (9'6")	HD 2.5 m (8'2")	HD 2.9 m (9'6")
Hydraulic Hammers	H120 GC	✓	✓	✓	✓
	H120 GC S	✓	✓	✓	✓



## Standard and Optional Equipment

Standard and optional equipment may vary. Consult your Cat dealer for details.

	Standard	Optional		Standard	Optional
<b>ENGINE</b>			<b>UNDERCARRIAGE AND STRUCTURES</b>		
Cat C7.1 Single Turbo China Nonroad Stage III	✓		Tie-down points on base frame	✓	
Three selectable power modes	✓		Segmented track guiding guard	✓	
Automatic engine speed control	✓		Full length track guiding guard		✓
Automatic engine idle shutdown	✓		Standard bottom guards	✓	
4500 m (14,760 ft) altitude capability with derate from 3000 m (9,840 ft)	✓		Heavy-duty bottom guard		✓
52° C (125° F) high-ambient cooling capacity	✓		Standard swivel guard		✓
Starting capability for -18° C (0° F) with jump start receptacle		✓	Standard travel motor guards	✓	
Starting capability for -32° C (-25° F)		✓	Heavy-duty travel motor guards		✓
Double element air filter with integrated precleaner	✓		Grease lubricated track links	✓	
On-demand electric cooling fans with auto-reverse function	✓		3700 kg (8,200 lb) counterweight	✓	
Biodiesel capability up to B20	✓		4200 kg (9,300 lb) counterweight for heavy-duty		✓
<b>HYDRAULIC SYSTEM</b>			4700 kg (10,400 lb) counterweight for Super Long Reach		✓
Boom and stick regeneration circuits	✓		Standard swing frame	✓	
Electronic main control valve	✓		Semi-HD swing frame for HD and SLR		✓
Automatic warm up	✓		Standard swing bearing	✓	
Automatic two-speed travel	✓		HD base frame with SD track rollers and standard carrier rollers		✓
Boom and stick drift reduction valve	✓		Standard base frame with HD track rollers and standard carrier rollers	✓	
Element type main hydraulic filter	✓		Final drive with standard travel motor	✓	
Slider joysticks	✓		<b>BOOM, STICKS AND LINKAGES</b>		
Tandem type electronic main pump	✓		600 mm (24") double grouser track shoes		✓
Hammer return filter circuit		✓	600 mm (24") triple grouser track shoes	✓	
Basic Tool Control (one pump, one way high-pressure flow)		✓	5.7 m (18'8") HD Reach boom + 2.9 m (9'6") HD stick		✓
Tool Control (two pumps, one/two way high-pressure flow)		✓	5.7 m (18'8") HD Reach boom + 2.5 m (8'2") HD stick		✓
Quick coupler circuit for Cat Pin Grabber		✓	Super Long Reach 8.85 m (29'0") boom		✓
			Super Long Reach 6.28 m (20'7") stick		✓
			Bucket linkage, B1-family without lifting eye, Cat GRADE		✓
			Bucket linkage, A-family without lifting eye, SLR		✓

(continued on next page)

# 320 Standard and Optional Equipment

## Standard and Optional Equipment (continued)

Standard and optional equipment may vary. Consult your Cat dealer for details.

	Standard	Optional		Standard	Optional
<b>ELECTRICAL SYSTEM</b>			<b>SERVICE AND MAINTENANCE</b>		
Machine electronic control module (×2)	✓		Sampling ports for Scheduled Oil Sampling (S·O·S <sup>SM</sup> )	✓	
1,000 CCA maintenance-free batteries (×2)	✓		Grouped location for engine oil and fuel filters	✓	
1,000 CCA maintenance-free batteries (×4)		✓	Ground-level second dipstick for engine oil	✓	
Centralized electrical disconnect switch	✓		Radiator screen		✓
Programmable time-delay LED working lights	✓		<b>SAFETY AND SECURITY</b>		
LED chassis light, LH and RH boom lights, cab lights	✓		Rearview camera and right-side mirror	✓	
<b>CAT TECHNOLOGY</b>			Rearview and right-hand-sideview cameras		✓
Cat Product Link™	✓		360° visibility		✓
Work tool recognition	✓		Neutral lever (lock out) for all controls	✓	
Work tool tracking*	✓		Anti-skid plate and countersunk bolts on service platform	✓	
Laser catcher		✓	Ground-level accessible secondary engine shutoff switch in cab	✓	
Cat GRADE with 2D and offset memory	✓		RH handrail and hand hold (ISO 2867:2011 compliant)	✓	
Cat GRADE with Advanced 2D		✓	Travel alarm		✓
Cat GRADE with 3D connectivity: – Virtual Reference Station** – Internet Base Service Station** – Trimble Connected Community**		✓			
Cat Assist: – Grade Assist – Boom Assist – Bucket Assist – Swing Assist – Lift Assist	✓				
Cat PAYLOAD: – Static weigh – Semiautomatic calibration – Payload/cycle information – USB reporting capability	✓				
2D E-Fence: – E-ceiling – E-floor – E-swing – E-wall – E-cab avoidance	✓				
Auto hammer stop	✓				
Remote Services capability	✓				

\*Paired with PL161 attachment locator.

\*\*Subscription required.

## Dealer Installed Kit and Attachments

Attachments may vary. Consult your Cat dealer for details.

### CAB

- Radial lower wiper for 70/30 with washer
- RH electrical pedal for tool control
- Rain protector plus cab light cover
- Polycarbonate roof hatch kit (comfort cab)

### SAFETY AND SECURITY

- Bluetooth® key fob

### ELECTRICAL

- Premium lighting package

### GUARDS

- Side rubber bumper
- Falling object guard (not compatible with cab light cover, rain protector)
- Mesh guard full front (not compatible with cab light cover, rain protector)
- Mesh guard lower half front

# 320 Cab Options

## Cab Options

	Comfort	Deluxe
ROPS, standard sound suppression	●	●
High-resolution 203 mm (8") LCD touchscreen monitor	●	●
High-resolution 254 mm (10") LCD touchscreen monitor	○	○
High-resolution 254 mm (10") LCD touchscreen monitor + additional monitor (for use with Cat GRADE with Advanced 2D or Cat GRADE with 3D)	○	○
Automatic bi-level air conditioner	●	●
Jog dial and shortcut keys for monitor control	●	●
Keyless push-to-start engine control	●	●
Height-adjustable console, three steps with tool	●	X
Height-adjustable console, infinite with no tool	X	●
Mechanically adjustable seat suspension	●	X
Heated seat with air-adjustable suspension	X	●
51 mm (2") seat belt	●	●
Fixed left-side console	●	X
Tilt-up left-side console	X	●
Bluetooth integrated radio	●	X
Bluetooth integrated radio with USB ports	X	●
12V DC outlets	●	●
Document storage	●	●
Rear head storage net and lunchbox storage net	X	●
Cup and bottle holders	●	●
Openable two-piece front window	●	●
Upper radial wiper with washer	●	●
Openable steel hatch	●	X
Openable polycarbonate skylight hatch	X	●
LED dome light	●	●
Floor welcome light	●	●
Roller front sunscreen	●	●
Roller rear sunscreen	○	○
Washable floor mat	●	●
Beacon ready	●	●

● Standard      ○ Optional      X Not available

For more complete information on Cat products, dealer services, and industry solutions, visit us on the web at [www.cat.com](http://www.cat.com)

© 2019 Caterpillar  
All rights reserved

AEXQ2196-03 (12-2019)  
Replaces AEXQ2196-02  
Build Number: 07C  
(China/Hong Kong/Taiwan)

Materials and specifications are subject to change without notice. Featured machines in photos may include additional equipment. See your Cat dealer for available options.

CAT, CATERPILLAR, LET'S DO THE WORK, their respective logos, "Caterpillar Yellow," the "Power Edge" and Cat "Modern Hex" trade dress as well as corporate and product identity used herein, are trademarks of Caterpillar and may not be used without permission.

