



# 323

## Hydraulic Excavator

# Technical Specifications

Configurations and features may vary by region. Please consult your Cat® dealer for availability in your area.

### Table of Contents

<b>Specifications</b> .....	<b>2</b>
Engine .....	2
Swing Mechanism .....	2
Weights .....	2
Track .....	2
Drive .....	2
Hydraulic System .....	2
Service Refill Capacities .....	2
Standards .....	2
Sound Performance .....	2
Operating Weight and Ground Pressure .....	3
Major Component Weights .....	3
Dimensions .....	4
Working Ranges .....	5
Bucket Specifications and Compatibility .....	7
Attachments Offering Guide .....	8
<b>Standard and Optional Equipment</b> .....	<b>9</b>
<b>Dealer Installed Kit and Attachments</b> .....	<b>11</b>
<b>Cab Options</b> .....	<b>12</b>
<b>323 Environmental Declaration</b> .....	<b>13</b>

# 323 Hydraulic Excavator Specifications

## Engine

Engine Model	Cat® C7.1	
Net Power		
ISO 9249	117 kW	157 hp
ISO 9249 (DIN)	159 hp (metric)	
Engine Power		
ISO 14396	118 kW	158 hp
ISO 14396 (DIN)	160 hp (metric)	
Bore	105 mm	4 in
Stroke	135 mm	5 in
Displacement	7.01 L	428 in <sup>3</sup>
Biodiesel Capability	Up to B20 <sup>(1)</sup>	

- Meets Brazil MAR-1 emission standards, equivalent to U.S. EPA Tier 3 and EU Stage IIIA.
- Recommended for use up to 4500 m (14,764 ft) altitude with engine power derate above 3000 m (9,842.5 ft).
- Advertised power is tested per the specified standard in effect at the time of manufacture.
- Net power advertised is the power available at the flywheel when the engine is equipped with fan, air intake system, exhaust system and alternator.
- Engine speed at 1,800 rpm.

<sup>(1)</sup>Cat engines are compatible with diesel fuel blended with the following lower-carbon intensity fuels\*\* up to:

- ✓ 100% biodiesel FAME (fatty acid methyl ester)\*
- ✓ 100% renewable diesel, HVO (hydrogenated vegetable oil) and GTL (gas-to-liquid) fuels

Refer to guidelines for successful application. Please consult your Cat dealer or “Caterpillar Machine Fluids Recommendations” (SEBU6250) for details.

\*For use of blends higher than 20% biodiesel, consult your Cat dealer.

\*\*Tailpipe greenhouse gas emissions from lower-carbon intensity fuels are essentially the same as traditional fuels.

## Swing Mechanism

Swing Speed	11.25 rpm	
Maximum Swing Torque	82 kN·m	60,300 lb-ft

## Weights

Operating Weight	24 300 kg	53,600 lb
------------------	-----------	-----------

- Long undercarriage Reach boom, HD R2.9 (9'6") stick, Heavy Duty (HD) 1.40 m<sup>3</sup> (1.83 yd<sup>3</sup>) bucket, 600 mm (24") HD triple grouser shoes, and 5400 kg (11,900 lb) counterweight.

## Track

Standard Track Shoes Width	600 mm	24 in
Number of Shoes (each side)	49	
Number of Track Rollers (each side)	8	
Number of Carrier Rollers (each side)	2	

## Drive

Gradeability	35°/70%	
Maximum Travel Speed	5.7 km/h	3.5 mph
Maximum Drawbar Pull	204 kN	45,861 lbf

## Hydraulic System

Main System – Maximum Flow – Implement	429 L/min (215 × 2 pumps)	113 gal/min (57 × 2 pumps)
Swing System – Maximum Flow	No swing pump	
Maximum Pressure – Equipment – Normal	35 000 kPa	5,075 psi
Maximum Pressure – Equipment – Heavy Lift Mode/Auto Dig Boost	38 000 kPa	5,510 psi
Maximum Pressure – Travel	34 300 kPa	4,974 psi
Maximum Pressure – Swing	27 500 kPa	3,998 psi
Boom Cylinder – Bore	120 mm	5 in
Boom Cylinder – Stroke	1260 mm	50 in
Stick Cylinder – Bore	140 mm	6 in
Stick Cylinder – Stroke	1504 mm	59 in
Bucket Cylinder – Bore	120 mm	5 in
Bucket Cylinder – Stroke	1104 mm	43 in

## Service Refill Capacities

Fuel Tank Capacity	345 L	86.6 gal
Cooling System	25 L	6.6 gal
Engine Oil	25 L	6.6 gal
Swing Drive	12 L	3.2 gal
Final Drive (each)	5 L	1.3 gal
Hydraulic System (including tank)	234 L	61.8 gal
Hydraulic Tank	115 L	30.4 gal

## Standards

Brakes	ISO 10265:2008
Cab/Rollover Protective Structure (ROPS)	ISO 12117-2:2008
Operator Protective Guards (OPG) (optional)	ISO 10262:1998 Level II

## Sound Performance

ISO 6395:2008 (external)	100 dB(A)
ISO 6396:2008 (inside cab)	70 dB(A)

- Hearing protection may be needed when operating with an open operator station and cab (when not properly maintained or doors/windows open) for extended periods or in a noisy environment.

# 323 Hydraulic Excavator Specifications

## Operating Weight and Ground Pressure

Base Machine Configurations	600 mm (24") HD Triple Grouser Shoes			
	Weight		Ground Pressure	
<b>Base Frame with Track Rollers and Carrier Rollers</b>				
<b>5400 kg (11,900 lb) Counterweight + Long Undercarriage Base Machine</b>				
HD Reach Boom + HD R2.9 (9'6") Stick + 1.40 m <sup>3</sup> (1.83 yd <sup>3</sup> ) HD Bucket	24 300 kg	53,600 lb	50.5 kPa	7.3 psi

All operating weights include a 90% fuel tank with 75 kg (165 lb) operator.

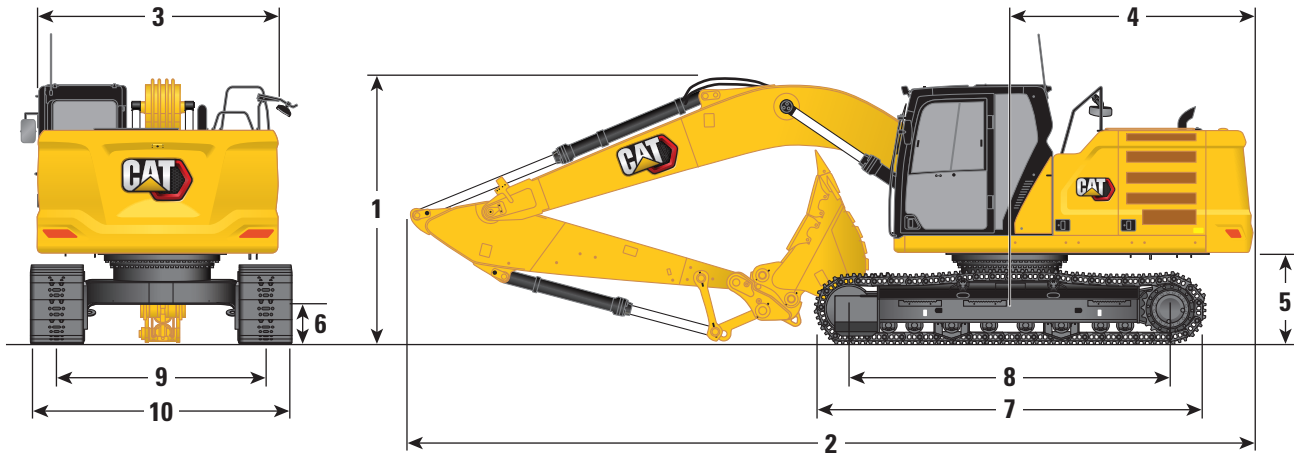
## Major Component Weights

	kg	lb
Base Machine (with 5400 kg [11,900 lb] counterweight, HD swing frame, HD base frame with SD track rollers and standard carrier rollers for long undercarriage, without boom cylinder – does not include 90% fuel and 75 kg [165 lb] operator)	16 400	36,100
Track Shoes:		
600 mm (24") Width, 12.5 mm (0.49") Thick HD Triple Grouser Track Shoes	3080	6,800
Boom Cylinders	340	750
Weight of 90% Fuel Tank and 75 kg (165 lb) Operator	310	680
Counterweight:		
5400 kg (11,900 lb) Counterweight	5400	11,900
Swing Frame:		
HD Swing Frame	2090	4,600
Undercarriage:		
HD Base Frame with SD Track Rollers and Standard Carrier Rollers	4470	9,900
Booms (including lines, pins, stick cylinder):		
HD Reach Boom (5.7 m/18'8")	2010	4,400
Super Long Reach (SLR) Boom (8.85 m/29'0")	2170	4,800
Sticks (including lines, pins, bucket cylinder, bucket linkage):		
HD Reach Stick (R2.9B1/9'6")	1210	2,700
Super Long Reach Stick (6.28A/20'7")	1340	3,000
Buckets (without linkage):		
1.19 m <sup>3</sup> (1.56 yd <sup>3</sup> ) Standard Duty (SD)	1060	2,400
1.38 m <sup>3</sup> (1.81 yd <sup>3</sup> ) HD	1010	2,220
1.40 m <sup>3</sup> (1.83 yd <sup>3</sup> ) HD	960	2,100
0.57 m <sup>3</sup> (0.74 yd <sup>3</sup> ) Ditch Cleaning (DC)	390	900
0.53 m <sup>3</sup> (0.69 yd <sup>3</sup> ) General Duty (GD)	410	900

# 323 Hydraulic Excavator Specifications

## Dimensions

All dimensions are approximate and may vary depending on bucket selection.



### Boom Options

**HD Reach Boom**  
5.7 m (18'8")

**Super Long Reach Boom**  
8.85 m (29'0")

### Stick Options

**HD Reach Sticks**  
R2.9B1 (9'6")

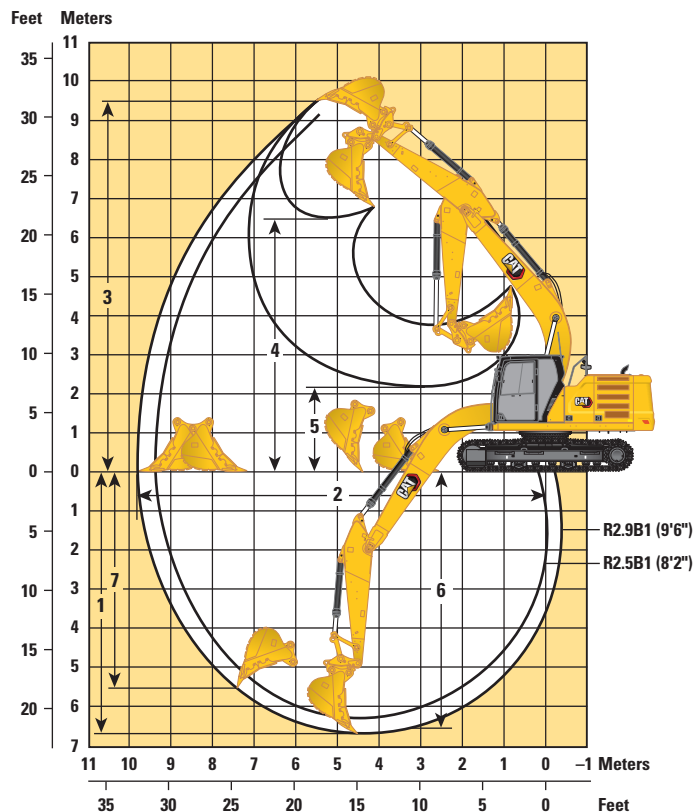
**Super Long Reach Stick**  
6.28A (20'7")

	HD Reach Boom 5.7 m (18'8")	Super Long Reach Boom 8.85 m (29'0")
<b>1 Machine Height:</b>		
Top of Cab Height	2960 mm 9'9"	2960 mm 9'9"
Top of GNSS Antenna Height (if installed)	3000 mm 9'10"	3000 mm 9'10"
Top of OPG Height	3100 mm 10'2"	3100 mm 10'2"
Handrail Height	2950 mm 9'8"	2950 mm 9'8"
With Boom/Stick/Bucket Installed	3160 mm 10'4"	3190 mm 10'6"
With Boom/Stick Installed	2910 mm 9'7"	3070 mm 10'1"
With Boom Installed	2480 mm 8'2"	2650 mm 8'8"
<b>2 Machine Length:</b>		
With Boom/Stick/Bucket Installed	9530 mm 31'3"	12 750 mm 41'10"
With Boom/Stick Installed	9500 mm 31'2"	12 760 mm 41'10"
With Boom Installed	8450 mm 27'9"	8920 mm 29'3"
<b>3 Upperframe Width</b>	2780 mm 9'1"	2780 mm 9'1"
<b>4 Tail Swing Radius</b>	2830 mm 9'3"	2830 mm 9'3"
<b>5 Counterweight Clearance</b>	1050 mm 3'5"	1050 mm 3'5"
<b>6 Ground Clearance</b>	470 mm 1'7"	470 mm 1'7"
<b>7 Track Length</b>	4450 mm 14'7"	4450 mm 14'7"
<b>8 Length to Center of Rollers</b>	3650 mm 12'0"	3650 mm 12'0"
<b>9 Track Gauge</b>	2380 mm 7'9"	2380 mm 7'10"
<b>10 Undercarriage Width:</b>		
600 mm (24") Shoes	2980 mm 9'9"	2980 mm 9'9"
<b>Bucket Type</b>	<b>HD</b>	<b>GD</b>
Bucket Capacity	1.40 m <sup>3</sup> 1.83 yd <sup>3</sup>	0.53 m <sup>3</sup> 0.69 yd <sup>3</sup>
Bucket Tip Radius	1580 mm 5'2"	1224 mm 4'0"

# 323 Hydraulic Excavator Specifications

## Working Ranges

All dimensions are approximate and may vary depending on bucket selection.



### Boom Options

**HD Reach Boom  
5.7 m (18'8")**

### Stick Options

**HD Reach Sticks  
R2.9B1 (9'6")**

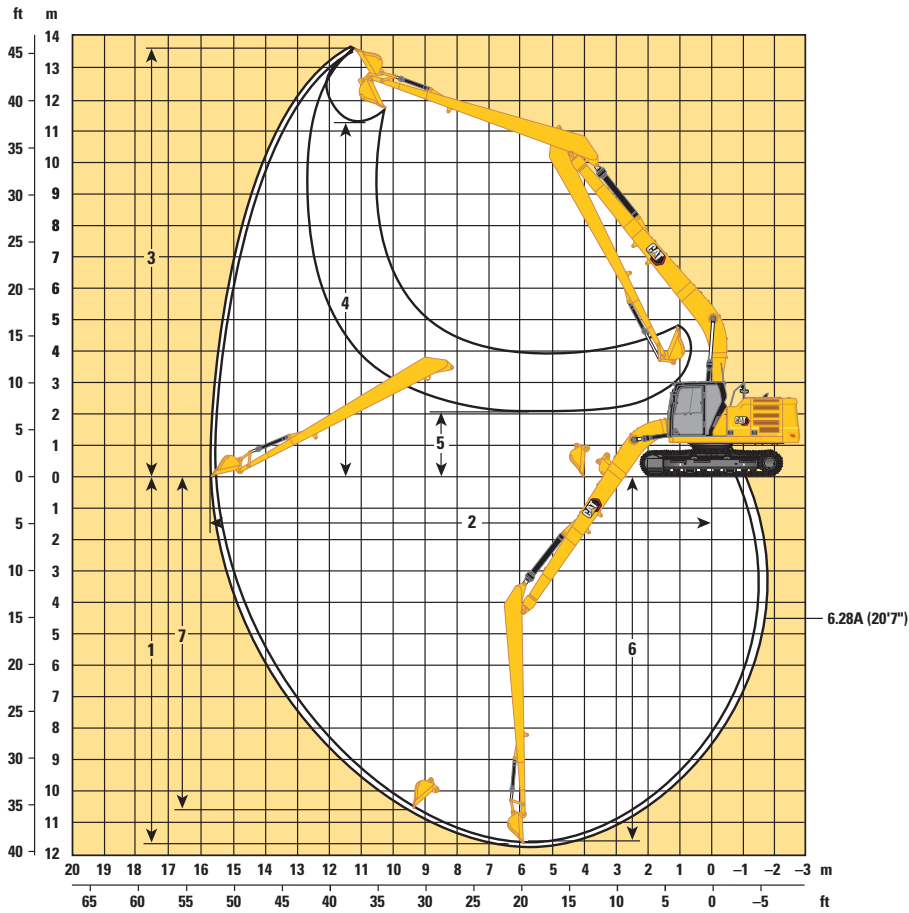
<b>1</b> Maximum Digging Depth	6730 mm	22'1"
<b>2</b> Maximum Reach at Ground Line	9870 mm	32'4"
<b>3</b> Maximum Cutting Height	9450 mm	31'0"
<b>4</b> Maximum Loading Height	6480 mm	21'3"
<b>5</b> Minimum Loading Height	2160 mm	7'1"
<b>6</b> Maximum Depth Cut for 2440 mm (8'0") Level Bottom	6560 mm	21'6"
<b>7</b> Maximum Vertical Wall Digging Depth	5620 mm	18'5"
Bucket Digging Force (ISO)	140 kN	31,505 lbf
Stick Digging Force (ISO)	107 kN	23,962 lbf
Bucket Digging Force (ISO) – Auto Dig Boost	152 kN	34,205 lbf
Stick Digging Force (ISO) – Auto Dig Boost	116 kN	26,016 lbf
Bucket Type	HD	
Bucket Capacity	1.40 m <sup>3</sup>	1.83 yd <sup>3</sup>
Bucket Tip Radius	1580 mm	5'2"

*(continued on next page)*

# 323 Hydraulic Excavator Specifications

## Working Ranges (continued)

All dimensions are approximate and may vary depending on bucket selection.



### Boom Options

**Super Long Reach Boom**  
8.85 m (29'0")

### Stick Options

**Super Long Reach Stick**  
6.28A (20'7")

<b>1</b> Maximum Digging Depth	11 540 mm	37'10"	11 690 mm	38'4"
<b>2</b> Maximum Reach at Ground Line	15 570 mm	51'1"	15 730 mm	51'7"
<b>3</b> Maximum Cutting Height	13 540 mm	44'5"	13 610 mm	44'8"
<b>4</b> Maximum Loading Height	11 440 mm	37'6"	11 290 mm	37'0"
<b>5</b> Minimum Loading Height	2240 mm	7'4"	2080 mm	6'10"
<b>6</b> Maximum Depth Cut for 2440 mm (8'0") Level Bottom	11 440 mm	37'6"	11 590 mm	38'0"
<b>7</b> Maximum Vertical Wall Digging Depth	11 020 mm	36'2"	10 560 mm	34'8"
Bucket Digging Force (ISO)	62 kN	13,940 lbf	60 kN	13,490 lbf
Stick Digging Force (ISO)	49 kN	11,020 lbf	49 kN	11,020 lbf
Bucket Type	DC		GD	
Bucket Capacity	0.57 m <sup>3</sup>	0.74 yd <sup>3</sup>	0.53 m <sup>3</sup>	0.69 yd <sup>3</sup>
Bucket Tip Radius	1070 mm	3'6"	1230 mm	4'0"

# 323 Hydraulic Excavator Specifications

## Bucket Specifications and Compatibility

	Linkage	Width		Capacity		Weight		Fill	5400 kg (11,900 lb)		
		mm	in	m <sup>3</sup>	yd <sup>3</sup>	kg	lb		%	HD Reach Boom	SLR Boom
										HD R2.9 (9'6")	SLR 6.28A (20'7")
<b>Pin-On (No Quick Coupler)</b>											
General Duty	B	1150	46	0.90	1.18	786	1,733	100	●		
	B	1250	50	1.00	1.31	820	1,808	100	●		
General Duty Excavation	B	1400	56	1.14	1.49	858	1,891	100	X		
Heavy Duty	B	1050	43	1.00	1.31	884	1,948	100	●		
	B	1200	49	1.19	1.56	955	2,105	100	●		
	B	1350	54	1.38	1.81	1018	2,244	100	X		
Severe Duty	B	1050	42	1.00	1.31	901	1,987	100	●		
	B	1100	43	1.00	1.31	965	2,128	90	●		
General Duty	312, A	900	36	0.53	0.69	403	888	100		○	
Ditch Cleaning	312, A	1200	48	0.57	0.74	386	851	100		○	
								kg	3555	1140	
								lb	7,837	2,513	
<b>With Cat Pin Grabber Coupler</b>											
General Duty	B	1150	46	0.90	1.18	786	1,733	100	●		
	B	1250	50	1.00	1.31	820	1,808	100	●		
General Duty Excavation	B	1400	56	1.14	1.49	858	1,891	100	●		
Heavy Duty	B	1200	49	1.19	1.56	955	2,105	100	⊙		
	B	1050	42	1.00	1.31	901	1,987	100	●		
Severe Duty	B	1100	43	1.00	1.31	965	2,128	90	●		
	B	1250	49	1.19	1.56	1063	2,343	90	●		
								kg	3248	—	
								lb	7,160	—	

The above loads are in compliance with hydraulic excavator standard EN474-5:2006 + A3:2013, they do not exceed 87% of hydraulic lifting capacity or 75% of tipping capacity with front linkage fully extended at ground line with bucket curled.

Capacity based on ISO 7451:2007.

Bucket weight with General Duty tips.

### Maximum Material Density:

- 2100 kg/m<sup>3</sup> (3,500 lb/yd<sup>3</sup>)
- ⊙ 1800 kg/m<sup>3</sup> (3,000 lb/yd<sup>3</sup>)
- 1200 kg/m<sup>3</sup> (2,000 lb/yd<sup>3</sup>)
- X Not Recommended

Caterpillar recommends using appropriate work tools to maximize the value customers receive from our products. Use of work tools, including buckets, which are outside of Caterpillar's recommendations or specifications for weight, dimensions, flows, pressures, etc. may result in less-than-optimal performance, including but not limited to reductions in production, stability, reliability, and component durability. Improper use of a work tool resulting in sweeping, prying, twisting and/or catching of heavy loads will reduce the life of the boom and stick.

# 323 Hydraulic Excavator Specifications

## Attachments Offering Guide

Not all Attachments are available in all regions. Consult your Cat dealer for configurations available in your region.

Match

### PIN-ON ATTACHMENTS

Counterweight		5400 kg (11,900 lb)
Boom Type		HD Reach
Stick Length		HD R2.9B1 (9'6")
Hydraulic Hammers	H120 GC	✓
	H120 GC S	✓
	H130 GC	✓
	H130 GC S	✓
Rotary Cutters	RC20	✓



## Standard and Optional Equipment

Standard and optional equipment may vary. Consult your Cat dealer for details.

	Standard	Optional		Standard	Optional
<b>BOOMS, STICKS AND LINKAGES</b>			<b>ELECTRICAL SYSTEM</b>		
5.7 m (18'8") HD Reach boom	✓		1,000 CCA maintenance-free batteries (×2)	✓	
8.85 m (29'0") Super Long Reach boom		✓	1,000 CCA maintenance-free batteries (×4)		✓
2.9 m (9'6") HD Reach stick	✓		Centralized electrical disconnect switch	✓	
6.28 m (20'7") Super Long Reach stick		✓	Programmable time-delay LED working lights	✓	
Bucket linkage, B1-type with lifting eye for Reach boom	✓		LED chassis light, Left Hand (LH) and Right Hand (RH) boom lights for Reach, cab lights	✓	
Bucket linkage, A type with lifting eye for SLR		✓	Premium surround lighting package		✓
<b>CAT TECHNOLOGY</b>			<b>ENGINE</b>		
VisionLink®	✓ <sup>1</sup>		Cat® C7.1 single turbo diesel engine	✓	
VisionLink Productivity		✓	Three selectable power modes	✓	
Remote Flash	✓		Auto engine speed control	✓	
Remote Troubleshoot	✓		Auto engine idle shutdown	✓	
Cat Grade Connectivity		✓	Work up to 3000 m (9,842.5 ft) above sea level without engine power de-rating	✓	
Compatibility with radios and base stations from Trimble, Topcon, and Leica	✓		52° C (125° F) high-ambient cooling capacity	✓	
Capability to install 3D grade systems from Trimble, Topcon, and Leica	✓		Cold starting capability for -18° C (0° F)	✓	
Cat Grade 2D <sup>2</sup>	✓		Cold starting capability for -32° C (-25° F)		✓
Cat Grade 2D with Attachment Ready Option (ARO)		✓	Double element air filter with integrated pre-cleaner	✓	
Cat Grade 3D single GNSS		✓	Electric fuel priming pump	✓	
Cat Grade 3D dual GNSS		✓	Reversible electric cooling fans	✓	
Laser catcher		✓	<b>HYDRAULIC SYSTEM</b>		
Cat Assist: <sup>2</sup>	✓		Boom and stick regeneration circuits	✓	
– Grade Assist			Heavy lift configuration		✓
– Boom Assist			Electronic main control valve	✓	
– Bucket Assist			Auto Dig Boost <sup>4</sup>	✓	
– Swing Assist			Auto warm up	✓	
– Lift Assist			Auto two-speed travel	✓	
Cat Payload: <sup>2</sup>	✓		Boom and stick drift reduction valve	✓	
– Static weigh			Element type main hydraulic filter	✓	
– Semiautomatic calibration			Slider joysticks	✓	
– Payload/cycle information			Tandem type electronic main pump	✓	
– USB reporting capability			Hammer return filter circuit		✓
Work tool recognition (PL161) <sup>3</sup>	✓		Hydraulic efficiency monitoring		✓
Work tool tracking (PL161) <sup>3</sup>	✓		Combined flow/high pressure auxiliary circuit		✓
Cat Tilt Rotator (TRS) Integration		✓	Quick coupler circuit for Cat Pin Grabber		✓
Operator Coaching		✓			

<sup>1</sup>Connect subscription only. Additional subscriptions are available. Contact your Cat dealer for availability.

<sup>2</sup>Optional on machines equipped with a Super Long Reach boom and stick.

<sup>3</sup>Requires PL161 attachment locator on work tool and Bluetooth® receiver on machine.

<sup>4</sup>Not available for Super Long Reach.

(continued on next page)

# 323 Standard and Optional Equipment

## Standard and Optional Equipment (continued)

Standard and optional equipment may vary. Consult your Cat dealer for details.

	Standard	Optional		Standard	Optional
<b>SAFETY AND SECURITY</b>			<b>UNDERCARRIAGE AND STRUCTURES</b>		
Cat Command (remote control)		✓	600 mm (24") HD triple grouser track shoes	✓	
2D E-Fence: <sup>2</sup>	✓		Tie-down points on base frame	✓	
– E-ceiling			Segmented track guiding guards	✓	
– E-floor			Full-length track guiding guards		✓
– E-swing			Bottom guards	✓	
– E-wall			HD bottom guard		✓
– E-cab avoidance			Swivel guard		✓
Auto hammer stop	✓		Travel motor guards	✓	
Rearview camera and side RH mirror	✓		HD travel motor guards		✓
360° visibility (must be used with 254 mm [10 in] monitor and cab light with cover)		✓	Grease lubricated track links	✓	
Neutral lever (lock out) for all controls	✓		5400 kg (11,900 lb) counterweight	✓	
Anti-skid plate and countersunk bolts on service platform	✓				
Ground-level accessible secondary engine shutoff switch in cab	✓				
Lockable disconnect switch	✓				
RH handrail and handhold	✓				
Travel alarm		✓			
Swing alarm		✓			
Inspection lighting		✓			
<b>SERVICE AND MAINTENANCE</b>					
Scheduled Oil Sampling (S·O·S <sup>SM</sup> ) ports	✓				
QuickEvac <sup>TM</sup> maintenance ready		✓			
Grouped location for engine oil and fuel filters	✓				
Ground-level second dipstick for engine oil	✓				
Radiator screen		✓			
Integrated vehicle health management system	✓				

<sup>2</sup>Optional on machines equipped with a Super Long Reach boom and stick.

## Dealer Installed Kit and Attachments

Attachments may vary. Consult your Cat dealer for details.

### CAB

- Lower radial wiper
- Rain protector plus cab light cover
- Polycarbonate roof hatch (Comfort cab only)
- Sun visor, slider (Comfort cab only)
- Laminated P5A glass front windshield
- LH/RH electrical pedal for tool control
- Armrest kit
- Seat with 4-point seatbelt capability
- Dual exit rear window kit
- Tool box
- Auxiliary relay

### ELECTRICAL

- Premium surround working lights

### GUARDS

- Swivel guard
- Side rubber bumper guard
- Operator Protective Guards
- Mesh guard full front
- Mesh guard half front

### MAINTENANCE

- Jump start wiring
- Duct ready kit

### SAFETY AND SECURITY

- Cat Detect – People Detection
- Remote control kit
- Seat belt indicator
- Bluetooth receiver
- Bluetooth key fob

### OTHER ATTACHMENTS

- Delayed engine shutdown kit
- Upper cover for antennae
- Removable mast for antennae
- Power clam kit

# 323 Cab Options

## Cab Options

	Comfort	Deluxe
ROPS	●	●
High-resolution 203 mm (8") LCD touchscreen monitor	●	●
High-resolution 254 mm (10") LCD touchscreen monitor	○	○
Auto bi-level air conditioner	●	●
Jog dial and shortcut keys for monitor control	●	●
Keyless push-to-start engine control	●	●
Height-adjustable console, infinite with no tool	X	●
Height-adjustable console, three steps with tool	●	X
Tilt-up left-side console	X	●
Fixed left-side console	●	X
Mechanical-suspension seat	●	X
Heated air-suspension seat	X	●
51 mm (2") seat belt	●	●
Monitor integrated Bluetooth radio with USB/Auxiliary ports	●	●
12V DC outlets	●	●
Document storage	●	●
Overhead storage and rear storage with nets	X	●
Beverage holder	●	●
Cup holder	●	●
Openable two-piece front window	●	●
Rear window emergency exit	●	●
Radial wiper with washer	●	●
Openable polycarbonate skylight hatch	X	●
Openable steel hatch	●	X
LED dome light	●	●
Roof sunscreen	X	●
Roller front sunscreen	●	●
Roller rear sunscreen	○	○
Washable floor mat	●	●
Beacon ready	●	●

- Standard
- Optional
- X Not available

The following information applies to the machine at the time of final manufacture as configured for sale in the regions covered in this document. The content of this declaration is valid as of the date issued; however, content related to machine features and specifications are subject to change without notice. For additional information, please see the machine's Operation and Maintenance Manual.

For more information on sustainability in action and our progress, please visit <https://www.caterpillar.com/en/company/sustainability>.

## Engine

- Cat C7.1 engine meets Brazil MAR-1 emission standards, equivalent to U.S. EPA Tier 3 and EU Stage IIIA.
- Cat engines are compatible with diesel fuel blended with the following lower-carbon intensity fuels\*\* up to:
  - ✓ 100% biodiesel FAME (fatty acid methyl ester)\*
  - ✓ 100% renewable diesel, HVO (hydrotreated vegetable oil) and GTL (gas-to-liquid) fuels

Refer to guidelines for successful application. Please consult your Cat dealer or "Caterpillar Machine Fluids Recommendations" (SEBU6250) for details.

*\*For use of blends higher than 20% biodiesel, consult your Cat dealer.*

*\*\*Tailpipe greenhouse gas emissions from lower-carbon intensity fuels are essentially the same as traditional fuels.*

## Air Conditioning System

- The air conditioning system on this machine contains the fluorinated greenhouse gas refrigerant R134a (Global Warming Potential = 1430). The system contains 0.85 kg (1.9 lb) of refrigerant which has a CO<sub>2</sub> equivalent of 1.216 metric tonnes (1.340 tons).

## Paint

- Based on best available knowledge, the maximum allowable concentration, measured in parts per million (PPM), of the following heavy metals in paint are:
  - Barium < 0.01%
  - Cadmium < 0.01%
  - Chromium < 0.01%
  - Lead < 0.01%

## Sound Performance

ISO 6395:2008 (external) – 100 dB(A)

ISO 6396:2008 (inside cab) – 70 dB(A)

- Hearing protection may be needed when operating with an open operator station and cab (when not properly maintained or doors/windows open) for extended periods or in a noisy environment.

## Oils and Fluids

- Caterpillar factory fills with ethylene glycol coolants. Cat Diesel Engine Antifreeze/Coolant (DEAC) and Cat Extended Life Coolant (ELC) can be recycled. Consult your Cat dealer for more information.
- Cat Bio HYDO™ Advanced is an EU Ecolabel approved biodegradable hydraulic oil.
- Additional fluids are likely to be present, please consult the Operations and Maintenance Manual or the Application and Installation guide for complete fluid recommendations and maintenance intervals.

## Features and Technology

- The following features and technology may contribute to fuel savings and/or carbon reduction. Features may vary. Consult your Cat dealer for details.
  - Advanced hydraulic systems balance power and efficiency
  - Smart mode matches machine power to digging requirements automatically
  - Increase operating efficiency up to 45% with standard Cat technologies
  - Cut maintenance costs with extended service intervals
  - The latest hydraulic oil filter provides longer life with a 3,000-hour replacement interval

For more complete information on Cat products, dealer services, and industry solutions, visit us on the web at [www.cat.com](http://www.cat.com)

© 2023 Caterpillar  
All rights reserved

Materials and specifications are subject to change without notice. Featured machines in photos may include additional equipment. See your Cat dealer for available options.

CAT, CATERPILLAR, LET'S DO THE WORK, their respective logos, "Caterpillar Corporate Yellow," the "Power Edge" and Cat "Modern Hex" trade dress as well as corporate and product identity used herein, are trademarks of Caterpillar and may not be used without permission. VisionLink is a trademark of Caterpillar Inc., registered in the United States and in other countries.

AEXQ2197-06 (09-2023)  
Replaces AEXQ2197-05  
Build Number: 07G  
(Taiwan)

