



# Cat<sup>®</sup> 312F, 315F L

## HYDRAULIC EXCAVATOR – FORESTRY

### FEATURES:

The Cat<sup>®</sup> 312F, 315F L Forestry is a perfect choice for customers who value versatility, reliability, durability, and maximum efficiency.

- Additional mesh screen and covers to mitigate the risk of fire from leaves, wood chips, and similar material encountered in Forestry applications.
- Single grouser shoe (500 mm) for soft ground and slope.

- Tool tray in front of cab structure.
- Third pump combined AUX circuit with large diameter front AUX lines for harvester.

## Specifications

### Engine

	312F	315F L
Engine Model	Cat C4.4 ACERT™	Cat C4.4 ACERT
Net Power – SAE J1349	69 kW	72 kW
Gross Power – SAE J1995	74 kW	74 kW
Bore	105 mm	105 mm
Stroke	127 mm	127 mm
Displacement	4.4 L	4.4 L

### Hydraulic System

	312F	315F L
Main System – Maximum Flow (total)	256 L/min	256 L/min
Maximum Pressure – Equipment	30 500 kPa	30 500 kPa
Maximum Pressure – Travel	35 000 kPa	35 000 kPa
Maximum Pressure – Swing	25 000 kPa	25 000 kPa
Pilot System – Maximum Flow	22 L/min	22 L/min
Pilot System – Maximum Pressure	4120 kPa	4120 kPa

### Drive

	312F	315F L
Maximum Travel Speed	5.4 km/h	5.5 km/h
Maximum Drawbar Pull	112 kN	113 kN

### Swing Mechanism

	312F	315F L
Swing Speed	10.9 rpm	11.5 rpm
Swing Torque	30.9 kN·m	30.9 kN·m

### Service Refill Capacities

	312F	315F L
Fuel Tank Capacity	223 L	178 L
DEF Tank Capacity	20 L	19 L
Cooling System	22 L	28 L
Engine Oil (with filter)	13.5 L	13.5 L
Swing Drive	2.4 L	2.4 L
Final Drive (each)	3 L	3 L
Hydraulic System Oil (including tank)	164 L	160 L
Hydraulic Tank Oil	91 L	84 L

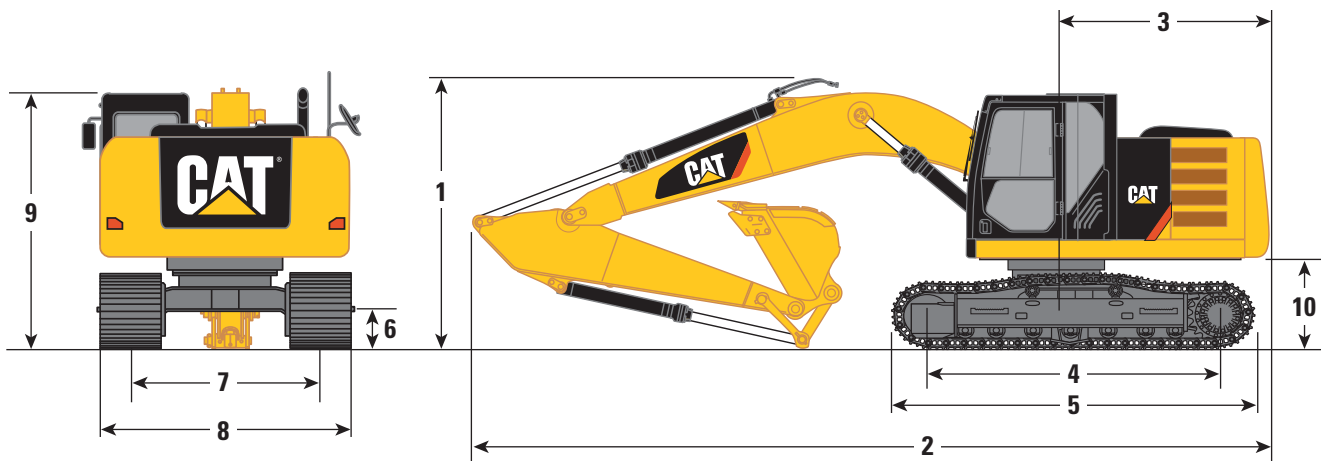


オフロード法2014年  
基準適合



国土交通省指定  
低騒音型建設機械

# 312F, 315F L Hydraulic Excavator – Forestry



## Dimensions\* (All dimensions are approximate.)

Boom	Reach Boom – 4.65 m	
Stick	Stick – R2.5 m	
	312F	315F L
1 Shipping Height	2950 mm	3030 mm
2 Shipping Length	7660 mm	7930 mm**
3 Tail Swing Radius	2160 mm	1490 mm
4 Length to Center of Rollers	2780 mm	2780 mm
5 Track Length	3540 mm	3550 mm
6 Ground Clearance	440 mm	440 mm
7 Track Gauge	1990 mm	1990 mm
8 Transport Width		
600 mm Shoes	—	2590 mm
700 mm Shoes	2690 mm	—
9 Cab Height	2810 mm	2850 mm
Cab Height with Top Guard	2950 mm	3000 mm
10 Counterweight Clearance	900 mm	870 mm

\*With 0.52 m<sup>3</sup>, 900 mm bucket.

\*\*With blade.

## Working Ranges\*

Boom Stick	Reach Boom – 4.65 m R2.5 m	
	312F	315F L
Maximum Digging Depth	5540 mm	5440 mm
Maximum Reach at Ground Level	8180 mm	8230 mm
Maximum Cutting Height	8520 mm	9310 mm
Maximum Loading Height	6100 mm	6860 mm
Minimum Loading Height	2020 mm	2510 mm
Maximum Depth Cut for 2440 mm Level Bottom	5330 mm	5240 mm
Maximum Vertical Wall Digging Depth	4990 mm	4900 mm

\*With 0.52 m<sup>3</sup>, 900 mm bucket.

## Bucket & Stick Forces\*

Boom Stick Bucket Type	Reach Boom – 4.65 m R2.5 m General Duty Bucket	
	312F	315F L
Bucket Digging Force (SAE)	85 kN	85 kN
Stick Digging Force (SAE)	63 kN	63 kN
Bucket Digging Force (ISO)	95 kN	95 kN
Stick Digging Force (ISO)	65 kN	65 kN

\*With 0.52 m<sup>3</sup>, 900 mm bucket.

## STANDARD EQUIPMENT

---

### ENGINE

- C4.4 ACERT diesel engine
- Meets Japan 2014 (Tier 4 Final) emission standards
- 2300 m altitude capability
- Electric priming pump
- Automatic engine speed control
- Economy and STD power modes
- Two-speed travel
- Side-by-side cooling system
- Radial seal air filter
- Primary filter with water separator and water separator indicator
- Secondary filter
- Screen filter in fuel line
- Cold weather battery –25° C (312F), –18° C (315F L)
- Radiator screen
- Air cleaner with precleaner

### HYDRAULIC SYSTEM

- Regeneration circuit for boom and stick
- Reverse swing dampening valve
- Automatic swing parking brake
- High-performance hydraulic return filter
- Capability of installing HP stackable valve and medium valve
- Capability of installing additional auxiliary pump and circuit

### CAB

- Pressurized operator station with positive filtration
- Sliding upper door window (left-hand cab door) (315F L only)
- Glass-breaking safety hammer
- Removable lower windshield with in cab storage bracket
- Coat hook
- Beverage holder
- Literature holder
- AM/FM radio
- Radio with MP3 auxiliary audio port
- Two 12V stereo speakers
- Storage shelf suitable for lunch or toolbox
- Color LCD display with indicators, filter/fluid change, and working hour information
- Adjustable armrest
- Height adjustable joystick consoles
- Neutral lever (lock out) for all controls
- Travel control pedals with removable hand levers
- Capability of installing additional pedals
- Two power outlets, 10 amp (total)
- Laminated glass front upper window and tempered other windows
- Polycarbonate hatch
- Seat, high-back mechanical suspension
- Ash tray

### UNDERCARRIAGE

- Grease Lubricated Track GLT2, resin seal
- Towing eye on base frame
- Swivel guard
- Center track guiding guard

### COUNTERWEIGHT

- 2.2 mt for 312F
- 3.06 mt for 315F L

### ELECTRICAL

- 80 amp alternator
- Circuit breaker
- Capability to electrically connect a beacon

### LIGHTS

- Halogen boom light (both sides)
- Time delay function for boom light and cab light
- Exterior lights integrated into storage box
- Working lights, cab mounted with time delay

### SECURITY

- Cat one key security system
- Door locks
- Cap locks on fuel and hydraulic tanks
- Lockable external tool/storage box
- Signaling/warning horn
- Secondary engine shutoff switch
- Openable skylight for emergency exit
- Rearview camera
- Bottom guard
- Travel motor guard
- FOGS, bolt-on
- Machine security system

### FRONT LINKAGE

- 4.65 m reach boom
- 2.5 m stick

### OTHER

- Grease gun
- Debris protection mesh screen and covers
- Fire extinguisher
- Tool tray, cab front
- Tool box
- Pattern changer, four way

### TECHNOLOGY

- Product Link™

# 312F, 315F L Hydraulic Excavator – Forestry

---

## OPTIONAL EQUIPMENT

---

### HYDRAULIC SYSTEM

- Auxiliary hydraulics
- Boom and stick lines
- High-pressure line
- Medium-pressure line
- Blade 2500 mm
- Blade 2600 mm
- Blade 2700 mm

### CAB

- Foot pedal

### UNDERCARRIAGE

- 500 mm single grouser shoes
- 500 mm triple grouser shoes
- 600 mm triple grouser shoes
- 700 mm triple grouser shoes

For more complete information on Cat products, dealer services, and industry solutions, visit us on the web at [www.cat.com](http://www.cat.com)

© 2017 Caterpillar  
All rights reserved

Materials and specifications are subject to change without notice. Featured machines in photos may include additional equipment. See your Cat dealer for available options.

CAT, CATERPILLAR, SAFETY.CAT.COM, their respective logos, "Caterpillar Yellow" and the "Power Edge" trade dress, as well as corporate and product identity used herein, are trademarks of Caterpillar and may not be used without permission.

Based on the Labor, Safety and Health Laws in Japan, employer of small construction equipment are required to provide specific training for all operators on machines with ship weight less than 3 metric ton. For machines greater than 3 metric ton, operator needs to obtain operator license certification from a Government approved registered training school.

AEHQ8073 (09-2017)  
(Japan)

