



# 323

## Hydraulic Excavator

# Technical Specifications

Configurations and features may vary by region. Please consult your Cat® dealer for availability in your area.

### Table of Contents

<b>Specifications</b> .....	<b>2</b>
Engine .....	2
Swing Mechanism .....	2
Weights .....	2
Track .....	2
Drive .....	2
Hydraulic System .....	2
Service Refill Capacities .....	2
Standards .....	2
Sound Performance .....	2
Operating Weights and Ground Pressures .....	3
Major Component Weights .....	4
Dimensions .....	5
Working Ranges .....	6
Bucket Specifications and Compatibility .....	8
Attachments Offering Guide .....	9
<b>Standard and Optional Equipment</b> .....	<b>10</b>
<b>Cab Options</b> .....	<b>12</b>
<b>Dealer Installed Kit and Attachments</b> .....	<b>13</b>
<b>323 Environmental Declaration</b> .....	<b>14</b>



オフロード法2014年  
基準適合

# 323 Hydraulic Excavator Specifications

## Engine

Engine Model	Cat® C7.1	
Net Power		
ISO 9249	128.5 kW	172 hp
ISO 9249 (DIN)	175 hp (metric)	
Engine Power		
ISO 14396	129.4 kW	174 hp
ISO 14396 (DIN)	176 hp (metric)	
Bore	105 mm	4 in
Stroke	135 mm	5 in
Displacement	7.01 L	428 in <sup>3</sup>
Biodiesel Capability	Up to B20 <sup>(1)</sup>	

- Meets U.S. EPA Tier 4 Final, EU Stage V, and Japan 2014 emission standards.
- Recommended for use up to 4500 m (14,760 ft) altitude with engine power derate above 3000 m (9,840 ft).
- Advertised power is tested per the specified standard in effect at the time of manufacture.
- Net power advertised is the power available at the flywheel when the engine is equipped with fan, air intake system, exhaust system and alternator.
- Engine speed at 2,200 rpm.

<sup>(1)</sup>Cat diesel engines are required to use ULSD (ultra-low sulfur diesel fuel with 15 ppm of sulfur or less) or ULSD blended with the following lower-carbon intensity fuels\*\* up to:

- ✓ 20% biodiesel FAME (fatty acid methyl ester)\*
- ✓ 100% renewable diesel, HVO (hydrogenated vegetable oil) and GTL (gas-to-liquid) fuels

Refer to guidelines for successful application. Please consult your Cat dealer or “Caterpillar Machine Fluids Recommendations” (SEBU6250) for details.

*\*Engines with no aftertreatment devices can use higher blends, up to 100% biodiesel (for use of blends higher than 20% biodiesel, consult your Cat dealer).*

*\*\*Tailpipe greenhouse gas emissions from lower-carbon intensity fuels are essentially the same as traditional fuels.*

## Swing Mechanism

Swing Speed	11.25 rpm	
Maximum Swing Torque	82 kN·m	60,300 lbf·ft

## Weights

Minimum Operating Weight	22 000 kg	48,500 lb
--------------------------	-----------	-----------

- Long undercarriage, Reach boom, R2.9 (9'7") stick, General Duty (GD) 1.0 m<sup>3</sup> (1.31 yd<sup>3</sup>) bucket, 600 mm (24 in) HD triple grouser shoes, 4200 kg (9,300 lb) counterweight.

## Track

Standard Track Shoes	600 mm	24 in
Optional Track Shoes	700 mm	28 in
Optional Track Shoes	790 mm	31 in
Number of Shoes (each side)	49	
Number of Track Rollers (each side)	8	
Number of Carrier Rollers (each side)	2	

## Drive

Gradeability	35°/70%	
Maximum Travel Speed	5.7 km/h	3.5 mph
Maximum Drawbar Pull	203 kN	45,614 lbf

## Hydraulic System

Main System – Maximum Flow – Implement	429 L/min (214.5 × 2 pumps)	113 gal/min (57 × 2 pumps)
Swing System – Maximum Flow	No swing pump	
Maximum Pressure – Equipment – Normal	35 000 kPa	5,075 psi
Maximum Pressure – Travel	34 300 kPa	4,974 psi
Maximum Pressure – Swing	27 500 kPa	3,998 psi
Boom Cylinder – Bore	120 mm	5 in
Boom Cylinder – Stroke	1260 mm	50 in
Stick Cylinder – Bore	140 mm	6 in
Stick Cylinder – Stroke	1504 mm	59 in
Bucket Cylinder – Bore	120 mm	5 in
Bucket Cylinder – Stroke	1104 mm	43 in

## Service Refill Capacities

Fuel Tank Capacity	345 L	86.6 gal
Cooling System	25 L	6.6 gal
Engine Oil	25 L	6.6 gal
Swing Drive (each)	6 L	1.6 gal
Final Drive (each)	5 L	1.3 gal
Hydraulic System (including tank)	234 L	61.8 gal
Hydraulic Tank	115 L	30.4 gal
Diesel Exhaust Fluid (DEF) Tank	41 L	10.8 gal

## Standards

Brakes	ISO 10265:2008
Cab/Rollover Protective Structure (ROPS)	ISO 12117-2:2008
Cab/Operator Protective Guards (OPG) (optional)	ISO 10262-2:1998 Level II

## Sound Performance

ISO 6395:2008 (external) – 100 dB(A)

ISO 6396:2008 (inside cab) – 70 dB(A)

- Hearing protection may be needed when operating with an open operator station and cab (when not properly maintained or doors/windows open) for extended periods or in a noisy environment.

# 323 Hydraulic Excavator Specifications

## Operating Weights and Ground Pressures

	600 mm (24 in) Triple Grouser Shoes		700 mm (28 in) Triple Grouser Shoes		790 mm (31 in) Triple Grouser Shoes	
	Weight kg (lb)	Ground Pressure kPa (psi)	Weight kg (lb)	Ground Pressure kPa (psi)	Weight kg (lb)	Ground Pressure kPa (psi)
<b>Base Machine Configurations</b>						
<b>Base Frame with Track Rollers and Carrier Rollers</b>						
<b>4200 kg (9,300 lb) Counterweight + Long Undercarriage Base Machine</b>						
Reach Boom + R2.9 (9'7") Stick + 1.0 m <sup>3</sup> (1.31 yd <sup>3</sup> ) GD Bucket	22 000 (48,500)	45.8 (6.6)	22 500 (49,600)	40.1 (5.8)	22 800 (50,300)	36.0 (5.2)

All operating weights include a 90% fuel tank with 75 kg (165 lb) operator.

# 323 Hydraulic Excavator Specifications

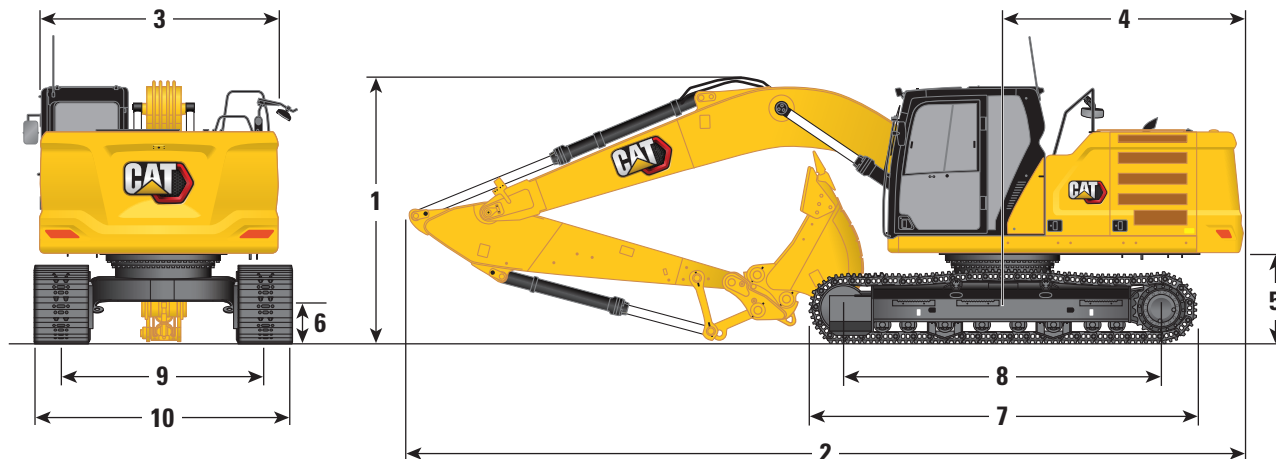
## Major Component Weights

	kg	lb
Base Machine (with 4200 kg [9,300 lb] counterweight, semi-HD swing frame, standard base frame with HD track rollers and standard carrier rollers for long undercarriage, – does not include boom, stick, bucket, boom cylinders, stick cylinder, bucket cylinder, tracks, 90% fuel tank and 75 kg [165 lb] operator).	14 800	32,600
Base Machine (with 5400 kg [11,900 lb] counterweight, HD swing frame, HD base frame with SD track rollers and standard carrier rollers for long undercarriage, – does not include boom, stick, bucket, boom cylinders, stick cylinder, bucket cylinder, tracks, 90% fuel tank and 75 kg [165 lb] operator).	16 700	36,800
Track Shoes:		
600 mm (24 in) Width, 12.5 mm (0.49") Thick Triple Grouser HD Track Shoes	3080	6,800
700 mm (28 in) Width, 12.5 mm (0.49") Thick Triple Grouser HD Track Shoes	3490	7,700
790 mm (31 in) Width, 12.5 mm (0.49") Thick Triple Grouser HD Track Shoes with Step Extension	3800	8,400
Boom Cylinders	340	700
Weight of 90% Fuel Tank and 75 kg (165 lb) Operator	310	680
Counterweights:		
4200 kg (9,300 lb) Counterweight	4200	9,300
5400 kg (11,900 lb) Counterweight	5400	11,900
Swing Frame:		
Semi-HD Swing Frame	1910	4,210
HD Swing Frame	2090	4,600
Undercarriage:		
Standard Base Frame with HD Track Rollers and Standard Carrier Rollers for Long Undercarriage	4420	9,700
HD Base Frame with SD Track Rollers and Standard Carrier Rollers for Long Undercarriage	4470	9,900
Booms (including lines, pins, stick cylinder):		
Reach Boom (5.7 m/18'8")	1710	3,800
HD Reach Boom (5.7 m/18'8")	2010	4,400
Super Long Reach Boom (8.85 m/29'0")	2170	4,780
Sticks (including lines, pins, bucket cylinder, bucket linkage):		
Reach Stick (R2.9B1/9'7")	1080	2,400
HD Reach Stick (R2.9B1/9'7")	1210	2,700
Super Long Reach (SLR) Stick (6.28A/20'7")	1340	2,950
Buckets (without linkage):		
1.0 m <sup>3</sup> (1.31 yd <sup>3</sup> ) General Duty Excavation (GDX)	730	1,600
0.9 m <sup>3</sup> (1.17 yd <sup>3</sup> ) GD	720	1,590
0.8 m <sup>3</sup> (1.05 yd <sup>3</sup> ) GD	690	1,520
0.9 m <sup>3</sup> (1.17 yd <sup>3</sup> ) Heavy Duty (HD)	840	1,850
0.8 m <sup>3</sup> (1.05 yd <sup>3</sup> ) HD	800	1,760
0.57 m <sup>3</sup> (0.75 yd <sup>3</sup> ) Ditch Cleaning (DC)	390	850
0.53 m <sup>3</sup> (0.69 yd <sup>3</sup> ) GD	410	900
Quick Couplers:		
Pin Grabber	390	850
Universal	230	500
Shovel Crane:		
Hook, valves and sensors	60	130
Auxiliary Lines:		
High Pressure (HP) lines for Reach Boom	80	180
HP lines Reach Stick	50	110
Auxiliary valves for HP	160	350

# 323 Hydraulic Excavator Specifications

## Dimensions

All dimensions are approximate and may vary depending on bucket selection.

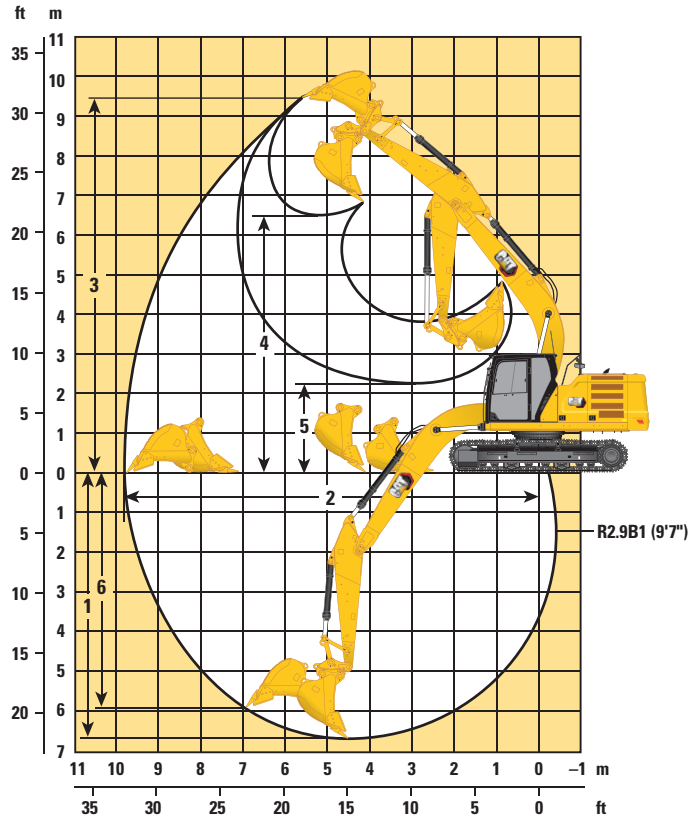


Boom Options	Reach and HD Reach Boom 5.7 m (18'8")		Super Long Reach Boom 8.85 m (29'0")	
Stick Options	Reach and HD Reach Stick R2.9B1 (9'7")		Super Long Reach Stick 6.28A (20'7")	
<b>1 Machine Height:</b>				
Top of Cab Height	2960 mm	9'9"	2960 mm	9'9"
Top of GNSS Antenna Height (if installed)	3000 mm	9'10"	3000 mm	9'10"
Top of OPG Height	3100 mm	10'2"	3100 mm	10'2"
Handrail Height	2950 mm	9'8"	2950 mm	9'8"
With Boom/Stick/Bucket Installed	3160 mm	10'4"	3190 mm	10'6"
With Boom/Stick Installed	2910 mm	9'7"	3070 mm	10'1"
With Boom Installed	2480 mm	8'2"	2650 mm	8'8"
<b>2 Machine Length:</b>				
With Boom/Stick/Bucket Installed	9530 mm	31'3"	12 750 mm	41'10"
With Boom/Stick Installed	9500 mm	31'2"	12 760 mm	41'10"
With Boom Installed	8450 mm	27'9"	8920 mm	29'3"
<b>3 Upperframe Width</b>	2780 mm	9'1"	2780 mm	9'1"
<b>4 Tail Swing Radius</b>	2830 mm	9'3"	2830 mm	9'3"
<b>5 Counterweight Clearance</b>	1050 mm	3'5"	1050 mm	3'5"
<b>6 Ground Clearance</b>	470 mm	1'7"	470 mm	1'7"
<b>7 Track Length</b>	4450 mm	14'7"	4450 mm	14'7"
<b>8 Length to Center of Rollers</b>	3650 mm	12'0"	3650 mm	12'0"
<b>9 Track Gauge</b>	2380 mm	7'9"	2380 mm	7'10"
<b>10 Undercarriage Width:</b>				
600 mm (24 in) Shoes	2980 mm	9'9"	2980 mm	9'9"
700 mm (28 in) Shoes	3080 mm	10'1"	3080 mm	10'1"
790 mm (31 in) Shoes	3170 mm	10'5"	3170 mm	10'5"
Bucket Type	GD		GD	
Bucket Capacity	1.0 m <sup>3</sup>	1.31 yd <sup>3</sup>	0.53 m <sup>3</sup>	0.69 yd <sup>3</sup>
Bucket Tip Radius	1470 mm	4'9"	1224 mm	4'0"

# 323 Hydraulic Excavator Specifications

## Working Ranges

All dimensions are approximate and may vary depending on bucket selection.

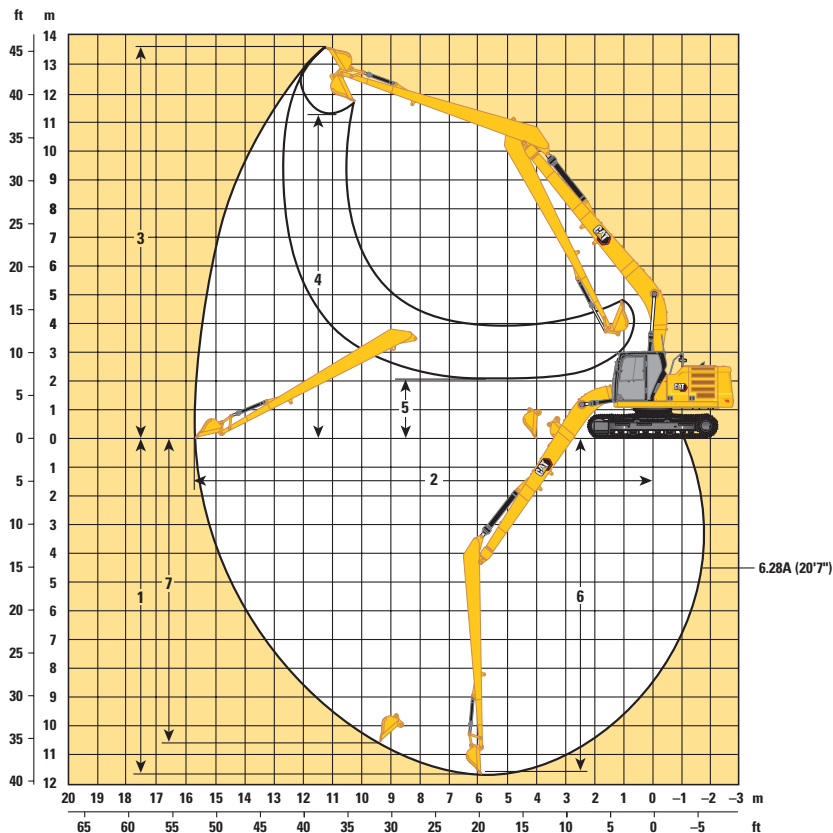


Boom Option	Reach and HD Reach Boom 5.7 m (18'8")	
Stick Option	Reach and HD Reach Stick R2.9B1 (9'7")	
1 Maximum Digging Depth	6620 mm	21'8"
2 Maximum Reach at Ground Line	9760 mm	31'8"
3 Maximum Cutting Height	9430 mm	30'11"
4 Maximum Loading Height	6590 mm	21'7"
5 Minimum Loading Height	2270 mm	7'5"
6 Maximum Vertical Wall Digging Depth	5960 mm	19'6"
Bucket Digging Force (ISO)	148 kN	36,202 lbf
Stick Digging Force (ISO)	108 kN	26,447 lbf
Bucket Type	GD	
Bucket Capacity	1.0 m <sup>3</sup>	1.31 yd <sup>3</sup>
Bucket Tip Radius	1470 mm	4'9"

# 323 Hydraulic Excavator Specifications

## Working Ranges

All dimensions are approximate and may vary depending on bucket selection.



### Boom Option

**Super Long Reach Boom**  
8.85 m (29'0")

### Stick Option

**Super Long Reach Stick**  
6.28A (20'7")

<b>1</b> Maximum Digging Depth	11 540 mm	37'10"	11 690 mm	38'4"
<b>2</b> Maximum Reach at Ground Line	15 570 mm	51'1"	15 730 mm	51'7"
<b>3</b> Maximum Cutting Height	13 540 mm	44'5"	13 610 mm	44'8"
<b>4</b> Maximum Loading Height	11 440 mm	37'6"	11 290 mm	37'0"
<b>5</b> Minimum Loading Height	2240 mm	7'4"	2080 mm	6'10"
<b>6</b> Maximum Depth Cut for 2440 mm (8'0") Level Bottom	11 440 mm	37'6"	11 590 mm	38'0"
<b>7</b> Maximum Vertical Wall Digging Depth	11 020 mm	36'2"	10 560 mm	34'8"
Bucket Digging Force (ISO)	62 kN	13,940 lbf	60 kN	13,490 lbf
Stick Digging Force (ISO)	49 kN	11,020 lbf	49 kN	11,020 lbf
Bucket Type	DC		GD	
Bucket Capacity	0.57 m <sup>3</sup>	0.75 yd <sup>3</sup>	0.53 m <sup>3</sup>	0.69 yd <sup>3</sup>
Bucket Tip Radius	1070 mm	3'6"	1230 mm	4'0"

# 323 Hydraulic Excavator Specifications

## Bucket Specifications and Compatibility

	Linkage	Width		Capacity		Weight		Fill	4200 kg (9,300 lb) Counterweight		5400 kg (11,900 lb) Counterweight			
		mm	in	m <sup>3</sup>	yd <sup>3</sup>	kg	lb		%	Reach Boom	HD Reach Boom	Reach Boom	HD Reach Boom	SLR Boom
										R2.9 (9'7")	HD R2.9 (9'7")	HD R2.9 (9'7")	R2.9 (9'7")	SLR 6.28A (20'7")
<b>Pin-On (No Quick Coupler)</b>														
General Duty Excavation	B	950	37	0.80	1.05	686	1,511	100	●	●	●	●		
	B	1050	41	0.90	1.18	719	1,584	100	●	●	●	●		
	B	1150	45	1.00	1.31	751	1,655	100	●	●	●	●		
Heavy Duty Excavation	B	950	37	0.80	1.05	796	1,755	100	●	●	●	●		
	B	1050	41	0.90	1.17	835	1,841	100	●	●	●	●		
	B	1050	41	0.90	1.18	855	1,885	100	●	●	●	●		
Tamping	B	2200	86	0.72	0.94	868	1,913	100	●	●	●	●		
	B	2200	86	0.90	1.18	891	1,965	100	●	●	●	●		
General Duty	312, A	900	36	0.53	0.69	403	888	100					○	
Ditch Cleaning	312, A	1200	48	0.57	0.74	386	851	100					○	
Maximum load with pin-on (payload + bucket)									kg	3100	2935	3710	3545	1140
									lb	6,834	6,471	8,179	7,815	2,513
<b>With Cat Pin Grabber Coupler</b>														
General Duty Excavation	B	950	37	0.80	1.05	686	1,511	100	●	●	●	●		
	B	1050	41	0.90	1.18	719	1,584	100	●	●	●	●		
	B	1150	45	1.00	1.31	751	1,655	100	●	⊙	●	●		
Heavy Duty Excavation	B	950	37	0.80	1.05	796	1,755	100	●	●	●	●		
	B	1050	41	0.90	1.17	835	1,841	100	●	⊙	●	●		
	B	1050	41	0.90	1.18	855	1,885	100	●	⊙	●	●		
Tamping	B	2200	86	0.72	0.94	868	1,913	100	●	●	●	●		
	B	2200	86	0.90	1.18	891	1,965	100	●	⊙	●	●		
Maximum load with coupler (payload + bucket)									kg	2779	2613	3401	3234	
									lb	6,127	5,760	7,498	7,131	

The above loads are in compliance with hydraulic excavator standard EN474-5:2006+A3:2013, they do not exceed 87% of hydraulic lifting capacity or 75% of tipping capacity with front linkage fully extended at ground line with bucket curled.

Capacity based on ISO 7451:2007.

Bucket weight with General Duty tips.

### Maximum Material Density:

● 2100 kg/m<sup>3</sup> (3,500 lb/yd<sup>3</sup>)

⊙ 1800 kg/m<sup>3</sup> (3,000 lb/yd<sup>3</sup>)

○ 1200 kg/m<sup>3</sup> (2,000 lb/yd<sup>3</sup>)

Caterpillar recommends using appropriate work tools to maximize the value customers receive from our products. Use of work tools, including buckets, which are outside of Caterpillar's recommendations or specifications for weight, dimensions, flows, pressures, etc. may result in less-than-optimal performance, including but not limited to reductions in production, stability, reliability, and component durability. Improper use of a work tool resulting in sweeping, prying, twisting and/or catching of heavy loads will reduce the life of the boom and stick.



# 323 Hydraulic Excavator Specifications

## Attachments Offering Guide

Not all Attachments are available in all regions. Consult your Cat dealer for configurations available in your region.

Match

† Allowed usage on machine less than 50%

### PIN-ON ATTACHMENTS

Counterweight		4200 kg (9,300 lb)		5400 kg (11,900 lb)	
Boom Type		Reach	HD Reach	Reach	HD Reach
Stick Length		R2.9 (9'7")	HD R2.9 (9'7")	R2.9 (9'7")	HD R2.9 (9'7")
Hydraulic Hammers	H120 GC Side Mount	✓	✓	✓	✓
	H120 S	✓	✓	✓	✓
	H130 S	✓†	✓	✓†	✓
Rotary Cutters	RC20	✓	✓	✓	✓

### CAT PIN GRABBER COUPLER ATTACHMENTS

Counterweight		4200 kg (9,300 lb)		5400 kg (11,900 lb)	
Boom Type		Reach	HD Reach	Reach	HD Reach
Stick Length		R2.9 (9'7")	HD R2.9 (9'7")	R2.9 (9'7")	HD R2.9 (9'7")
Hydraulic Hammers	H120 GC Side Mount	✓†	✓	✓†	✓
	H120 S	✓†	✓	✓†	✓
	H130 S	✓†	✓	✓†	✓
Rotary Cutters	RC20	✓	✓	✓	✓

### TRS18 (PIN-ON TOP/S70 BOTTOM) ATTACHMENTS

Some attachments require more hydraulic flow and are best suited with a machine that has HP2 circuits and a tiltrotator with a high flow swivel. Check the hydraulic capability of your machine and tiltrotator and the requirements of your attachment to ensure a proper match.

Counterweight		4200 kg (9,300 lb)		5400 kg (11,900 lb)	
Boom Type		Reach	HD Reach	Reach	HD Reach
Stick Length		R2.9 (9'7")	HD R2.9 (9'7")	R2.9 (9'7")	HD R2.9 (9'7")
Hydraulic Hammers	H115 S	✓	✓	✓	✓
	H120 S	✓†	✓	✓†	✓

**NOTE:** Use hammers on tiltrotators less than 10% of working hours per year or maximum 200 hours per year. Refer to your Operation and Maintenance Manual for recommended hydraulic flow requirements.

# 323 Standard and Optional Equipment

## Standard and Optional Equipment

Standard and optional equipment may vary. Consult your Cat dealer for details.

	Standard	Optional		Standard	Optional
<b>ENGINE</b>			<b>UNDERCARRIAGE AND STRUCTURES</b>		
Cat® C7.1 single turbo diesel engine	✓		600 mm (24 in) HD triple grouser track shoes	✓	
Three selectable power modes	✓		700 mm (28 in) HD triple grouser track shoes		✓
Auto engine speed control	✓		790 mm (31 in) HD triple grouser track shoes		✓
Auto engine idle shutdown	✓		Tie-down points on base frame	✓	
Work up to 3000 m (9,840 ft) above sea level without engine power de-rating	✓		Segmented track guiding guards	✓	
46° C (115° F) high-ambient cooling capacity	✓		Bottom guards	✓	
52° C (125° F) high-ambient cooling capacity		✓	HD bottom guard		✓
-18° C (0° F) cold start capability	✓		Swivel guard		✓
-32° C (-25° F) cold start capability		✓	Travel motor guards	✓	
Double element air filter with integrated pre-cleaner	✓		HD travel motor guards		✓
Electric fuel priming pump	✓		Grease lubricated track links	✓	
Reversible electric cooling fans	✓		4200 kg (9,300 lb) counterweight	✓	
<b>HYDRAULIC SYSTEM</b>			5400 kg (11,900 lb) counterweight		✓
Boom and stick regeneration circuits	✓		Shovel crane package		✓
Electronic main control valve	✓		<b>BOOM, STICKS AND LINKAGES</b>		
Auto warm up	✓		5.7 m (18'8") Reach boom	✓	
Auto two-speed travel	✓		5.7 m (18'8") HD Reach boom		✓
Boom and stick drift reduction valve	✓		8.85 m (29'0") Super Long Reach boom		✓
Element type main hydraulic filter	✓		2.9 m (9'7") Reach stick	✓	
Slider joysticks	✓		2.9 m (9'7") HD Reach stick		✓
Tandem type electronic main pump	✓		6.28 m (20'7") Super Long Reach stick		✓
Hammer return filter circuit		✓	Bucket linkage, B1-type without lifting eye, Cat Grade	✓	
Hydraulic efficiency monitoring		✓	Bucket linkage, A type without lifting eye		✓
Combined flow/high pressure auxiliary circuit		✓			
Medium pressure auxiliary circuit		✓			
Quick coupler circuit for Cat Pin Grabber		✓			

(continued on next page)

## Standard and Optional Equipment (continued)

Standard and optional equipment may vary. Consult your Cat dealer for details.

	Standard	Optional		Standard	Optional
<b>ELECTRICAL SYSTEM</b>			<b>SERVICE AND MAINTENANCE</b>		
1,000 CCA maintenance-free batteries (×2)	✓		Scheduled Oil Sampling (S·O·S <sup>SM</sup> ) ports	✓	
1,000 CCA maintenance-free batteries (×4) for cold starting capability –32° C (–25° F)		✓	QuickEvac™ maintenance ready		✓
Centralized electrical disconnect switch	✓		Grouped location for engine oil and fuel filters	✓	
Programmable time-delay LED working lights	✓		Ground-level second dipstick for engine oil	✓	
Chassis light, Left Hand (LH) and Right Hand (RH) boom lights for Reach and SLR, cab lights – 850 lumens	✓		Radiator screen		✓
Premium surround lighting package		✓	Integrated vehicle health management system	✓	
<b>CAT TECHNOLOGY</b>			<b>SAFETY AND SECURITY</b>		
VisionLink®	✓ <sup>1</sup>		Cat Command (remote control)		✓
VisionLink Productivity		✓	2D E-Fence: <sup>2</sup>	✓	
Remote Flash	✓		– E-ceiling		
Remote Troubleshoot	✓		– E-floor		
Cat Grade Connectivity		✓	– E-swing		
Compatibility with radios and base stations from Trimble, Topcon, and Leica	✓		– E-wall		
Capability to install 3D grade systems from Trimble, Topcon, and Leica	✓		– E-cab avoidance		
Cat Grade 2D <sup>2</sup>	✓		Auto hammer stop	✓	
Cat Grade 2D with Attachment Ready Option (ARO)		✓	Rearview camera and side RH mirror	✓	
Cat Grade 3D single GNSS		✓	360° visibility		✓
Cat Grade 3D dual GNSS		✓	Neutral lever (lock out) for all controls	✓	
Laser catcher		✓	Anti-skid plate and countersunk bolts on service platform	✓	
Cat Assist: <sup>2</sup>	✓		Ground-level accessible secondary engine shutoff switch in cab	✓	
– Grade Assist			Lockable disconnect switch	✓	
– Boom Assist			RH handrail and handhold	✓	
– Bucket Assist			Signaling/warning horn	✓	
– Swing Assist			Inspection lighting		✓
Cat Payload: <sup>2</sup>	✓		Storage tray in pump compartment	✓	
– Static weigh					
– Semiautomatic calibration					
– Payload/cycle information					
– USB reporting capability					
Work tool recognition (PL161)	✓				
Work tool tracking (PL161)	✓				
Cat Tilt Rotator (TRS) Integration		✓			
Operator Coaching		✓			

<sup>1</sup>Connect subscription only. Additional subscriptions are available. Contact your Cat dealer for availability.

<sup>2</sup>Optional on machines equipped with a Super Long Reach boom and stick

# 323 Cab Options

## Cab Options

	Deluxe	Premium
ROPS	●	●
High-resolution 254 mm (10") LCD touchscreen monitor	●	●
Auto bi-level air conditioner	●	●
Jog dial and shortcut keys for monitor control	●	●
Keyless push-to-start engine control	●	●
Height-adjustable console	●	●
Tilt-up left-side console	●	●
Heated air-suspension seat	●	X
Heated and ventilated air-suspension seat	X	●
51 mm (2") seat belt	●	●
Monitor integrated Bluetooth radio with USB/Aux ports	●	●
12V DC outlets	●	●
Document storage	●	●
Overhead storage and rear storage with nets	●	●
Beverage holder	●	●
Cup holder	●	●
Openable two-piece front window	●	●
Rear window emergency exit	●	●
Radial wiper with washer	●	X
Parallel wiper	X	●
Openable polycarbonate skylight hatch	●	●
Laminated roof glass	X	X
LED dome light	●	●
Floor welcome light	●	●
Roof sunscreen	●	●
Roller front sunscreen	●	●
Roller rear sunscreen	○	●
Washable floor mat	●	●
Beacon ready	●	●
Cat Stick Steer	○	○

- Standard
- Optional
- X Not available

## Dealer Installed Kit and Attachments

Attachments may vary. Consult your Cat dealer for details.

### CAB

- Lower radial wiper
- Rain protector plus cab light cover
- Laminated P5A glass front windshield
- LH/RH electrical pedal for tool control
- Armrest kit
- Seat with 4-point seatbelt capability
- Dual exit rear window kit
- Tool box
- Auxiliary relay

### ELECTRICAL

- Premium surround working lights

### GUARDS

- Swivel guard
- Side rubber bumper guard
- Operator Protective Guards
- Mesh guard full front
- Mesh guard half front

### MAINTENANCE

- Jump start wiring
- Duct ready kit

### SAFETY AND SECURITY

- Cat Detect – People Detection
- Cat Command – Remote control kit
- Seat belt indicator
- Bluetooth receiver
- Bluetooth key fob

### OTHER ATTACHMENTS

- Delayed engine shutdown kit
- Upper cover for antennae
- Removable mast for antennae
- Power clam kit

# 323 Environmental Declaration

The following information applies to the machine at the time of final manufacture as configured for sale in the regions covered in this document. The content of this declaration is valid as of the date issued; however, content related to machine features and specifications are subject to change without notice. For additional information, please see the machine's Operation and Maintenance Manual.

For more information on sustainability in action and our progress, please visit <https://www.caterpillar.com/en/company/sustainability>.

## Engine

- The Cat® C7.1 engine meets U.S. EPA Tier 4 Final, EU Stage V, and Japan 2014 emission standards.
- Cat diesel engines are required to use ULSD (ultra-low sulfur diesel fuel with 15 ppm of sulfur or less) or ULSD blended with the following lower-carbon intensity fuels\*\* up to:
  - ✓ 20% biodiesel FAME (fatty acid methyl ester)\*
  - ✓ 100% renewable diesel, HVO (hydrogenated vegetable oil) and GTL (gas-to-liquid) fuels

Refer to guidelines for successful application. Please consult your Cat dealer or "Caterpillar Machine Fluids Recommendations" (SEBU6250) for details.

*\*Engines with no aftertreatment devices can use higher blends, up to 100% biodiesel (for use of blends higher than 20% biodiesel, consult your Cat dealer).*

*\*\*Tailpipe greenhouse gas emissions from lower-carbon intensity fuels are essentially the same as traditional fuels.*

## Air Conditioning System

- The air conditioning system on this machine contains the fluorinated greenhouse gas refrigerant R134a (Global Warming Potential = 1430). The system contains 0.85 kg (1.9 lb) of refrigerant which has a CO<sub>2</sub> equivalent of 1.216 metric tonnes (1.340 tons).

## Paint

- Based on best available knowledge, the maximum allowable concentration, measured in parts per million (PPM), of the following heavy metals in paint are:
  - Barium < 0.01%
  - Cadmium < 0.01%
  - Chromium < 0.01%
  - Lead < 0.01%

## Sound Performance

ISO 6395:2008 (external) – 100 dB(A)

ISO 6396:2008 (inside cab) – 70 dB(A)

- Hearing protection may be needed when operating with an open operator station and cab (when not properly maintained or doors/windows open) for extended periods or in a noisy environment.

## Oils and Fluids

- Caterpillar factory fills with ethylene glycol coolants. Cat Diesel Engine Antifreeze/Coolant (DEAC) and Cat Extended Life Coolant (ELC) can be recycled. Consult your Cat dealer for more information.
- Cat Bio HYDO™ Advanced is an EU Ecolabel approved biodegradable hydraulic oil.
- Additional fluids are likely to be present, please consult the Operations and Maintenance Manual or the Application and Installation guide for complete fluid recommendations and maintenance intervals.

## Features and Technology

- The following features and technology may contribute to fuel savings and/or carbon reduction. Features may vary. Consult your Cat dealer for details.
  - Advanced hydraulic systems balance power and efficiency
  - Smart mode matches machine power to digging requirements automatically
  - Eco mode minimizes fuel consumption for light applications
  - Increase operating efficiency up to 45% with standard Cat technologies
  - Cut maintenance costs with extended service intervals
  - The latest hydraulic oil filter provides longer life with a 3,000-hour replacement interval

## Recycling

- The materials included in machines are categorized as below with approximate weight percentage. Because of variations of product configurations, the following values in the table may vary.

Material Type	Weight Percentage
Steel	84.28%
Iron	4.95%
Nonferrous Metal	2.37%
Mixed Metal	1.45%
Mixed-Metal and Nonmetal	0.94%
Plastic	1.19%
Rubber	0.17%
Mixed Nonmetallic	0.21%
Fluid	2.94%
Other	1.50%
Uncategorized	0.00%
Total	100%

- A machine with higher recyclability rate will ensure more efficient usage of valuable natural resources and enhance End-of-Life value of the product. According to ISO 16714:2008 (Earthmoving machinery – Recyclability and recoverability – Terminology and calculation method), recyclability rate is defined as percentage by mass (mass fraction in percent) of the new machine potentially able to be recycled, reused, or both.

All parts in the bill of material are first evaluated by component type based on a list of components defined by the ISO 16714:2008 and Japan CEMA (Construction Equipment Manufacturers Association) standards. Remaining parts are further evaluated for recyclability based on material type.

Because of variations of product configurations, the following value in the table may vary.

Recyclability – 98%

For more complete information on Cat products, dealer services, and industry solutions, visit us on the web at [www.cat.com](http://www.cat.com)

© 2023 Caterpillar  
All rights reserved

Materials and specifications are subject to change without notice. Featured machines in photos may include additional equipment. See your Cat dealer for available options.

CAT, CATERPILLAR, LET'S DO THE WORK, their respective logos, "Caterpillar Corporate Yellow," the "Power Edge" and Cat "Modern Hex" trade dress as well as corporate and product identity used herein, are trademarks of Caterpillar and may not be used without permission. VisionLink is a trademark of Caterpillar Inc., registered in the United States and in other countries.

Based on the Labor, Safety and Health Laws in Japan, employer of small construction equipment are required to provide specific training for all operators on machines with machine weight less than 3 metric ton. For machines greater than 3 metric ton, operator needs to obtain operator license certification from a Government approved registered training school.

AEXQ2160-07 (09-2023)  
Replaces AEXQ2160-06  
Build Number: 07G  
(Japan)

