



# 320

## Hydraulic Excavator

# Technical Specifications

Configurations and features may vary by region. Please consult your Cat® dealer for availability in your area.

### Table of Contents

<b>Specifications</b> .....	<b>2</b>
Engine .....	2
Swing Mechanism .....	2
Weights .....	2
Track .....	2
Drive .....	2
Hydraulic System .....	2
Service Refill Capacities .....	2
Standards .....	2
Operating Weights and Ground Pressures .....	3
Major Component Weights .....	4
Dimensions .....	5
Working Ranges .....	6
Bucket Specifications and Compatibility .....	8
Attachments Offering Guide .....	9
<b>Standard and Optional Equipment</b> .....	<b>10</b>
<b>Dealer Installed Kit and Attachments</b> .....	<b>12</b>
<b>Cab Options</b> .....	<b>13</b>



オフロード法2014年  
基準適合

# 320 Hydraulic Excavator Specifications

## Engine

Engine Model	Cat® C4.4	
Net Power (ISO 9249)	128 kW	172 hp
Engine Power (ISO 14396)	129 kW	174 hp
Bore	105 mm	4 in
Stroke	127 mm	5 in
Displacement	4.4 L	269 in <sup>3</sup>

- The 320 meets Japan 2014 (Tier 4 Final) emission standards.
- Recommended for use up to 4500 m (14,764 ft) altitude with engine power derate above 3000 m (9,842.5 ft).
- Net power is tested per ISO 9249. Standards in effect at the time of manufacture.
- Net power advertised is the power available at the flywheel when the engine is equipped with fan, air intake system, exhaust system and alternator.
- Rated speed at 2,200 rpm.

## Swing Mechanism

Swing Speed	11.30 rpm	
Maximum Swing Torque	82 kN·m	60,300 lb-ft

## Weights

Operating Weight	20 900 kg	46,076 lb
<ul style="list-style-type: none"> <li>• Standard undercarriage, Reach boom, R2.9 (9'6") stick, GD 0.80 m<sup>3</sup> (1.05 yd<sup>3</sup>) bucket, 600 mm (24 in) triple grouser shoes, 3.7 mt (8,200 lb) counterweight.</li> </ul>		
Maximum Operating Weight	23 900 kg	52,700 lb
<ul style="list-style-type: none"> <li>• Long undercarriage, Super Long Reach boom, Super Long Reach stick, GD 0.53 m<sup>3</sup> (0.69 yd<sup>3</sup>) bucket, 790 mm (31 in) triple grouser shoes, 4.7 mt (10,400 lb) counterweight.</li> </ul>		

## Track

Standard with Standard Undercarriage	600 mm	24 in
Optional for Standard Undercarriage	700 mm	28 in
Optional for Standard Undercarriage	790 mm	31 in
Number of Shoes (each side) – Standard Undercarriage	45	
Number of Track Rollers (each side) – Standard Undercarriage	8	
Number of Carrier Rollers (each side)	2	

## Drive

Gradeability	35°/70%	
Maximum Travel Speed	5.7 km/h	3.5 mph
Maximum Drawbar Pull	205 kN	45,996 lbf

## Hydraulic System

Main System – Maximum Flow – Implement	429 L/min (214.5 × 2 pumps)	113 gal/min (56.5 × 2 pumps)
Swing System – Maximum Flow	No swing pump	
Maximum Pressure – Equipment – Normal	35 000 kPa	5,075 psi
Maximum Pressure – Travel	34 300 kPa	4,974 psi
Maximum Pressure – Swing	27 500 kPa	3,998 psi
Boom Cylinder – Bore	120 mm	5 in
Boom Cylinder – Stroke	1260 mm	50 in
Stick Cylinder – Bore	140 mm	6 in
Stick Cylinder – Stroke	1504 mm	59 in
Bucket Cylinder – Bore	120 mm	5 in
Bucket Cylinder – Stroke	1104 mm	43 in

## Service Refill Capacities

Fuel Tank Capacity	345 L	86.6 gal
Cooling System	25 L	6.6 gal
Engine Oil	15 L	4.0 gal
Swing Drive (each)	12 L	3.2 gal
Final Drive (each)	5 L	1.3 gal
Hydraulic System (including tank)	234 L	61.8 gal
Hydraulic Tank	115 L	30.4 gal
DEF Tank	39 L	10.3 gal

## Standards

Brakes	ISO 10265:2008
Cab/ROPS	ISO 12117-2:2008
FOGS (optional)	ISO 10262:1998 Level II

# 320 Hydraulic Excavator Specifications

## Operating Weights and Ground Pressures

	600 mm (24") Triple Grouser Shoes				700 mm (28") Triple Grouser Shoes				790 mm (31") Triple Grouser Shoes			
	Weight		Ground Pressure		Weight		Ground Pressure		Weight		Ground Pressure	
	kg	lb	kPa	psi	kg	lb	kPa	psi	kg	lb	kPa	psi
<b>3.7 mt (8,200 lb) Counterweight + Standard Undercarriage Base Machine</b>												
Reach Boom + R2.9 (9'6") Stick + 0.80 m <sup>3</sup> (1.05 yd <sup>3</sup> ) GD Bucket	21 000	46,300	48.4	7.0	21 300	47,000	42.1	6.1	21 500	47,400	42.4	6.2
<b>4.2 mt (9,300 lb) Counterweight + Long Undercarriage Base Machine</b>												
Reach Boom + R2.9 (9'6") Stick + 1.19 m <sup>3</sup> (1.56 yd <sup>3</sup> ) HD Bucket	21 800	48,100	45.3	6.6	22 200	49,000	39.6	5.7	22 500	49,600	35.5	5.2
<b>4.7 mt (10,400 lb) Counterweight + Long Undercarriage Base Machine</b>												
SLR Boom + SLR Stick + 0.53 m <sup>3</sup> (0.69 yd <sup>3</sup> ) GD Bucket	23 300	51,400	48.5	7.0	23 600	52,000	42.1	6.1	23 900	52,700	37.8	5.5

All operating weights include a 90% fuel tank with 75 kg (165 lb) operator.

# 320 Hydraulic Excavator Specifications

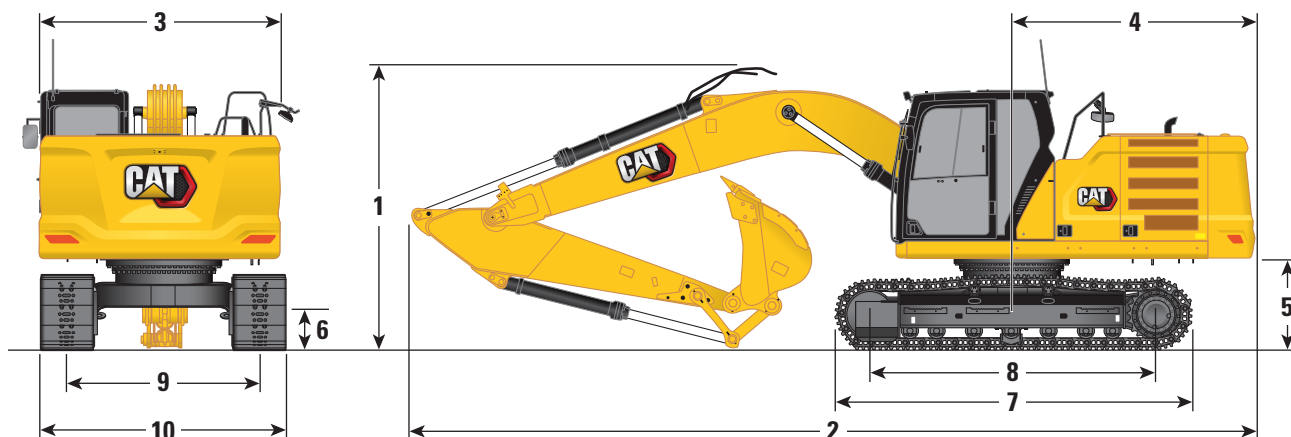
## Major Component Weights

	kg	lb
Base machine (with 3.7 mt [8,200 lb] counterweight, standard swing frame, standard base frame with standard track rollers and standard carrier rollers for standard undercarriage, with boom cylinders – does not include 90% fuel and 75 kg [165 lb] operator)	14 000	30,900
Base machine (with 4.2 mt [9,300 lb] counterweight, semi-HD swing frame, standard base frame with HD track rollers and standard carrier rollers for long undercarriage, with boom cylinders – does not include 90% fuel and 75 kg [165 lb] operator)	14 800	32,600
Base machine (with 4.7 mt [10,400 lb] counterweight, semi-HD swing frame, standard base frame with HD track rollers and standard carrier rollers for long undercarriage, without boom cylinders – does include 90% fuel and 75 kg [165 lb] operator)	15 300	33,700
Track Shoes:		
600 mm (24 in) Width, 10 mm (0.39 in) Thick Triple Grouser Track Shoes for Standard Undercarriage	2580	5,700
700 mm (28 in) Width, 10 mm (0.39 in) Thick Triple Grouser Track Shoes for Standard Undercarriage	2790	6,100
790 mm (31 in) Width, 10 mm (0.39 in) Thick Triple Grouser Track Shoes for Standard Undercarriage with Step Extension for ISO 2867	3080	6,800
Counterweights:		
3.7 mt Counterweight	3700	8,200
4.2 mt Counterweight	4200	9,300
4.7 mt Counterweight	4700	10,400
Swing Frames:		
Standard Swing Frame	1880	4,100
Semi-HD Swing Frame	1910	4,200
Undercarriage:		
Standard Base Frame with Standard Track Rollers and Standard Carrier Rollers for Standard Undercarriage	4020	8,900
Standard Base Frame with HD Track Rollers and Standard Carrier Rollers for Standard Undercarriage	4030	8,900
Standard Base Frame with HD Track Rollers and Standard Carrier Rollers for Long Undercarriage	4390	9,700
Booms (including lines, pins, stick cylinder):		
Reach Boom (5.7 m/18'8")	1710	3,800
HD Reach Boom (5.7 m/18'8")	2010	4,400
Super Long Reach Boom (8.85 m/29'0")	2170	4,800
Sticks (including lines, pins, bucket cylinder, bucket linkage):		
Reach Stick (R2.9B1/9'6")	990	2,200
HD Reach Stick (R2.9B1/9'6")	1160	2,600
Super Long Reach Stick (6.28A/20'7")	1340	3,000
Buckets (without linkage):		
0.90 m <sup>3</sup> (1.18 yd <sup>3</sup> ) HD	840	1,900
0.80 m <sup>3</sup> (1.05 yd <sup>3</sup> ) HD	800	1,800
0.57 m <sup>3</sup> (0.75 yd <sup>3</sup> ) Ditch Cleaning	390	900
0.90 m <sup>3</sup> (1.18 yd <sup>3</sup> ) GD	720	1,590
0.80 m <sup>3</sup> (1.05 yd <sup>3</sup> ) GD	690	1,520
0.53 m <sup>3</sup> (0.69 yd <sup>3</sup> ) GD	400	900
Quick Coupler:		
Pin Grabber QC	390	900

# 320 Hydraulic Excavator Specifications

## Dimensions

All dimensions are approximate and may vary depending on bucket selection.

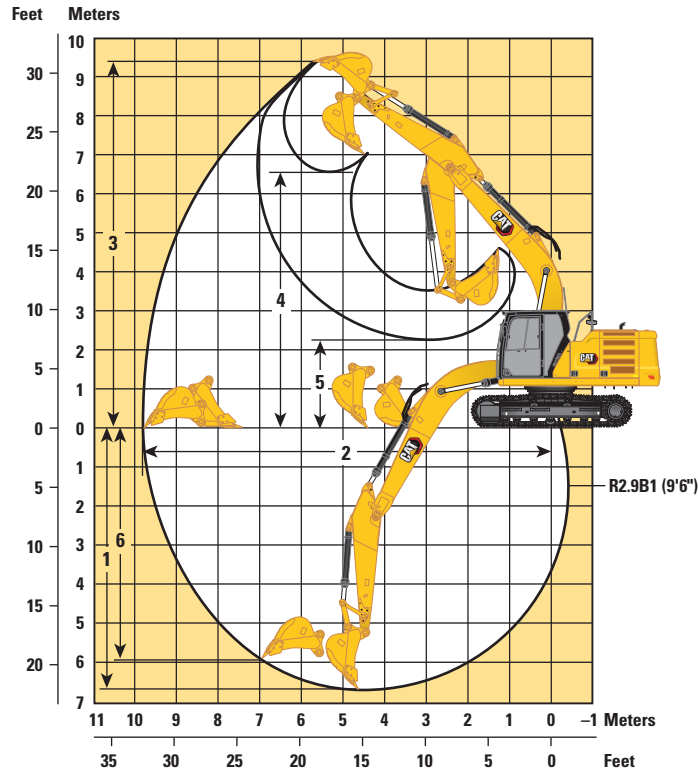


Boom Options	Reach and HD Reach Boom 5.7 m (18'8")		SLR Boom 8.85 m (29'0")			
Stick Options	Reach Stick R2.9B1 (9'6")		SLR Stick 6.28A (20'7")			
<b>1</b> Machine Height:						
Top of Cab Height	2960 mm	9'9"	2960 mm	9'9"	2960 mm	9'9"
Top of FOGS Height	3100 mm	10'2"	3100 mm	10'2"	3100 mm	10'2"
Guardrails/Handrails Height	2950 mm	9'8"	2950 mm	9'8"	2950 mm	9'8"
With Boom/Stick/Bucket Installed	3050 mm	10'0"	3190 mm	10'6"	3190 mm	10'6"
With Boom/Stick Installed	2910 mm	9'7"	3070 mm	10'1"	3070 mm	10'1"
With Boom Installed	2480 mm	8'2"	2650 mm	8'8"	2650 mm	8'8"
<b>2</b> Machine Length:						
With Boom/Stick/Bucket Installed	9520 mm	31'3"	12 750 mm	41'9"	12 750 mm	41'9"
With Boom/Stick Installed	9500 mm	31'2"	12 760 mm	41'9"	12 760 mm	41'9"
With Boom Installed	8450 mm	27'9"	8920 mm	29'3"	8920 mm	29'3"
<b>3</b> Upperframe Width without Walkways	2780 mm	9'1"	2780 mm	9'1"	2780 mm	9'1"
<b>4</b> Tail Swing Radius	2830 mm	9'3"	2830 mm	9'3"	2830 mm	9'3"
<b>5</b> Counterweight Clearance	1050 mm	3'5"	1050 mm	3'5"	1050 mm	3'5"
<b>6</b> Ground Clearance	470 mm	1'7"	470 mm	1'7"	470 mm	1'7"
<b>7</b> Track Length	4070 mm	13'4"	4450 mm	14'7"	4450 mm	14'7"
<b>8</b> Length to Center of Rollers	3270 mm	10'9"	3650 mm	12'0"	3650 mm	12'0"
<b>9</b> Track Gauge	2200 mm	7'3"	2380 mm	7'9"	2380 mm	7'9"
<b>10</b> Undercarriage Width:						
600 mm (24 in) Shoes	2800 mm	9'2"	2980 mm	9'9"	2980 mm	9'9"
700 mm (28 in) Shoes	3080 mm	10'1"	3080 mm	10'1"	3080 mm	10'1"
790 mm (31 in) Shoes	3170 mm	10'5"	3170 mm	10'5"	3170 mm	10'5"
Bucket Type	GD		Ditch Cleaning (DC)		GD	
Bucket Capacity	0.80 m <sup>3</sup>	1.05 yd <sup>3</sup>	0.57 m <sup>3</sup>	0.75 yd <sup>3</sup>	0.53 m <sup>3</sup>	0.69 yd <sup>3</sup>
Bucket Tip Radius	1470 mm	4'10"	1073 mm	3'6"	1224 mm	4'0"

# 320 Hydraulic Excavator Specifications

## Working Ranges

All dimensions are approximate and may vary depending on bucket selection.



### Boom Option

Reach and HD Reach Boom  
5.7 m (18'8")

### Stick Option

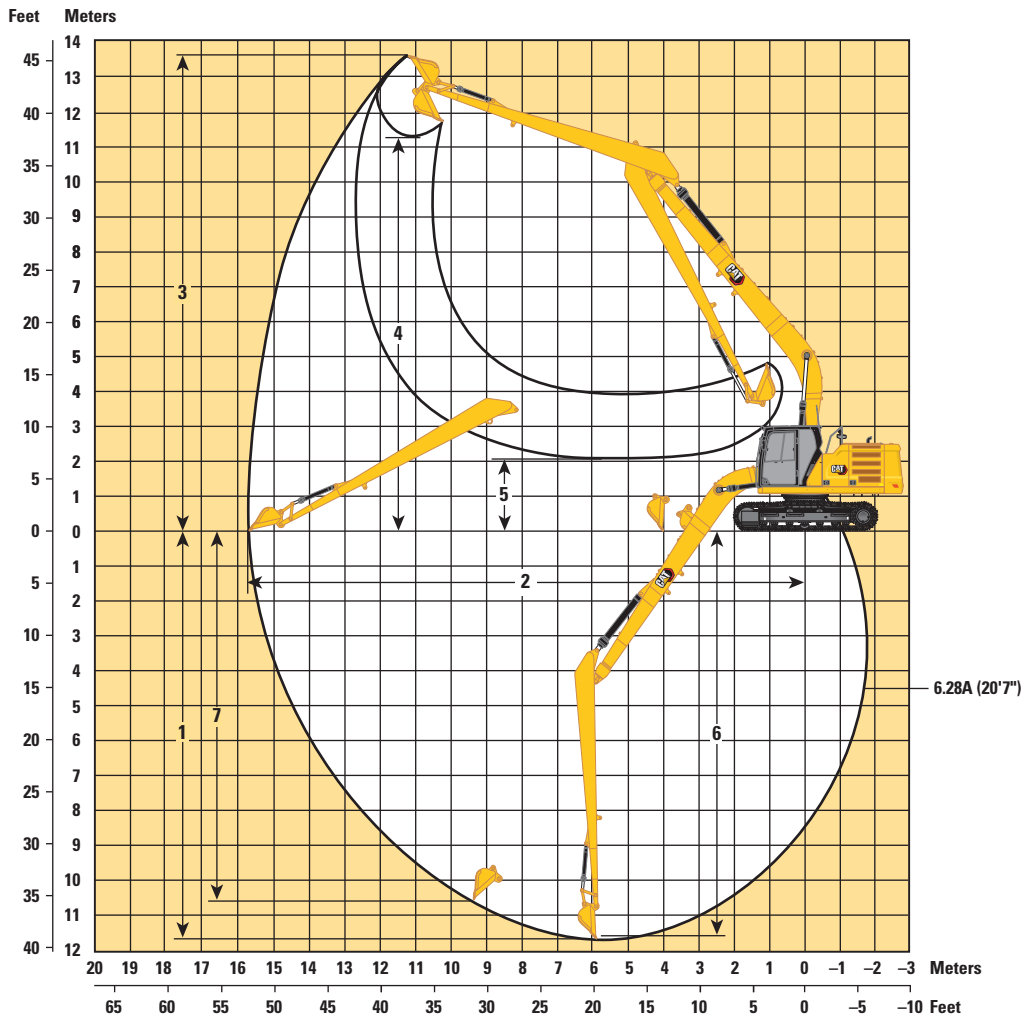
Reach and HD Reach Stick  
R2.9B1 (9'6")

1 Maximum Digging Depth	6620 mm	21'9"
2 Maximum Reach at Ground Line	9760 mm	32'0"
3 Maximum Cutting Height	9430 mm	30'11"
4 Maximum Loading Height	6590 mm	21'7"
5 Minimum Loading Height	2270 mm	7'5"
6 Maximum Vertical Wall Digging Depth	5960 mm	19'7"
Bucket Digging Force (ISO)	148 kN	33,245 lbf
Stick Digging Force (ISO)	108 kN	24,286 lbf
Bucket Type	GD	
Bucket Capacity	0.80 m <sup>3</sup>	1.05 yd <sup>3</sup>
Bucket Tip Radius	1470 mm	4'10"

# 320 Hydraulic Excavator Specifications

## Working Ranges

All dimensions are approximate and may vary depending on bucket selection.



### Boom Option

SLR Boom  
8.85 m (29'0")

### Stick Option

SLR Stick

6.28A (20'7")

6.28A (20'7")

	6.28A (20'7")	SLR Stick	6.28A (20'7")
1 Maximum Digging Depth	11 540 mm	37'10"	11 690 mm
2 Maximum Reach at Ground Line	15 570 mm	51'1"	15 730 mm
3 Maximum Cutting Height	13 540 mm	44'5"	13 610 mm
4 Maximum Loading Height	11 440 mm	37'6"	11 290 mm
5 Minimum Loading Height	2240 mm	7'4"	2080 mm
6 Maximum Depth Cut for 2440 mm (8'0") Level Bottom	11 440 mm	37'6"	11 590 mm
7 Maximum Vertical Wall Digging Depth	11 020 mm	36'2"	10 560 mm
Bucket Digging Force (SAE)	62 kN	13,841 lbf	54 kN
Bucket Digging Force (ISO)	62 kN	13,841 lbf	60 kN
Stick Digging Force (SAE)	49 kN	10,950 lbf	48 kN
Stick Digging Force (ISO)	49 kN	10,950 lbf	49 kN
Bucket Type	Ditch Cleaning (DC)		GD
Bucket Capacity	0.57 m <sup>3</sup>	0.75 yd <sup>3</sup>	0.53 m <sup>3</sup>
Bucket Tip Radius	1070 mm	3'6"	1230 mm

# 320 Hydraulic Excavator Specifications

## Bucket Specifications and Compatibility

	Linkage	Width		Capacity		Weight		Fill %	320		320 (Long)
		mm	in	m <sup>3</sup>	yd <sup>3</sup>	kg	lb		3.7 mt (8,200 lb) Counterweight	4.2 mt (9,300 lb) Counterweight	4.7 mt (10,400 lb) Counterweight
									Reach Boom	HD Reach Boom	SLR Boom
									R2.9 (9'6")	R2.9 (9'6") HD	6.28A (20'7")
<b>Pin-On (No Quick Coupler)</b>											
General Duty – Excavation	B	950	37	0.80	1.04	688	1,517	100	●	●	
	B	1050	41	0.90	1.17	721	1,590	100	●	⊙	
	B	1150	45	1.00	1.31	753	1,660	100	⊙	⊖	
Heavy Duty – Excavation	B	950	37	0.80	1.04	798	1,760	100	●	⊙	
	B	1050	41	0.90	1.17	837	1,846	100	⊙	⊖	
Tamping	B	2200	86	0.72	0.94	868	1,913	100	●	●	
	B	2200	86	0.90	1.18	891	1,965	100	⊙	⊖	
General Duty	312	900	36	0.53	0.69	403	888	100			◇
Ditch Cleaning Long Reach	312	1200	48	0.57	0.74	386	851	100			◇
Maximum load with pin-on (payload + bucket)								kg	2505	2335	800
								lb	5,523	5,148	1,764
<b>With Cat Pin Grabber Coupler</b>											
General Duty – Excavation	B	950	37	0.80	1.04	688	1,517	100	⊙	⊖	
	B	1050	41	0.90	1.17	721	1,590	100	⊖	○	
	B	1150	45	1.00	1.31	753	1,660	100	○	○	
Heavy Duty – Excavation	B	950	37	0.80	1.04	798	1,760	100	⊖	○	
	B	1050	41	0.90	1.17	837	1,846	100	○	○	
Tamping	B	2200	86	0.72	0.94	868	1,913	100	⊖	⊖	
	B	2200	86	0.90	1.18	891	1,965	100	○	○	
Maximum load with coupler (payload + bucket)								kg	2098	1928	
								lb	4,625	4,250	

The above loads are in compliance with hydraulic excavator standard EN474, they do not exceed 87% of hydraulic lifting capacity or 75% of tipping capacity with front linkage fully extended at ground line with bucket curled.

### Maximum Material Density:

- 2100 kg/m<sup>3</sup> (3,500 lb/yd<sup>3</sup>)
- ⊙ 1800 kg/m<sup>3</sup> (3,000 lb/yd<sup>3</sup>)
- ⊖ 1500 kg/m<sup>3</sup> (2,500 lb/yd<sup>3</sup>)
- 1200 kg/m<sup>3</sup> (2,000 lb/yd<sup>3</sup>)
- ◇ 900 kg/m<sup>3</sup> (1,500 lb/yd<sup>3</sup>)

Caterpillar recommends using appropriate work tools to maximize the value customers receive from our products. Use of work tools, including buckets, which are outside of Caterpillar's recommendations or specifications for weight, dimensions, flows, pressures, etc. may result in less-than-optimal performance, including but not limited to reductions in production, stability, reliability, and component durability. Improper use of a work tool resulting in sweeping, prying, twisting and/or catching of heavy loads will reduce the life of the boom and stick.



# 320 Hydraulic Excavator Specifications

## Attachments Offering Guide

Not all Attachments are available in all regions. Consult your Cat dealer for configurations available in your region.

Match
  \* Working range front only
  † Allowed usage on machine less than 50%
  No Match

### PIN-ON ATTACHMENTS

Counterweight		3.7 mt (8,200 lb)	3.7 mt (8,200 lb)
Boom Type		Reach	Reach HD
Stick Length		2.9 m (9'6")	2.9 m HD (9'6")
Hydraulic Hammers	H115 S	✓	✓
	H120 GC Side Mount	✓	✓
	H120 S	✓	✓
	H130 S	✓†	✓
Pulverizers	P215	✓	✓

### CAT PIN GRABBER COUPLER ATTACHMENTS

Counterweight		3.7 mt (8,200 lb)	3.7 mt (8,200 lb)
Boom Type		Reach	Reach HD
Stick Length		2.9 m (9'6")	2.9 m HD (9'6")
Hydraulic Hammers	H115 S	✓	✓
	H120 GC Side Mount	✓†	✓
	H120 S	✓†	✓
	H130 S	✓†*	✓
Pulverizers	P215	✓*	

### BOOM-MOUNT ATTACHMENTS

Counterweight		3.7 mt (8,200 lb)	3.7 mt (8,200 lb)
Boom Type		Reach	Reach HD
Mobile Scrap and Demolition Shears	S2050	✓*	✓*

# 320 Standard and Optional Equipment

## Standard and Optional Equipment

Standard and optional equipment may vary. Consult your Cat dealer for details.

	Standard	Optional		Standard	Optional
<b>ENGINE</b>			<b>UNDERCARRIAGE AND STRUCTURES</b>		
Three selectable power modes	✓		600 mm (24 in) triple grouser track shoes	✓	
Auto engine speed control	✓		700 mm (28 in) triple grouser track shoes		✓
Auto engine idle shutdown	✓		790 mm (31 in) triple grouser track shoes		✓
4500 m (14,764 ft) altitude capability with derate from 3000 m (9,842.5 ft)	✓		Tie-down points on base frame (ISO 15818 compliant)	✓	
46° C (115° F) high-ambient cooling capacity	✓		Center track guiding guards	✓	
52° C (125° F) high-ambient cooling capacity		✓	Segmented track guiding guards		✓
Starting capability for -32° C (-25° F) with jump start receptacle	✓		Bottom guards	✓	
Double element air filter with integrated pre-cleaner	✓		HD bottom guards		✓
Electric fuel priming pump	✓		Swivel guard		✓
Reversible electric cooling fans	✓		Travel motor guards	✓	
<b>HYDRAULIC SYSTEM</b>			HD travel motor guards		✓
Boom and stick regeneration circuits	✓		Grease lubricated track links	✓	
Electronic main control valve	✓		3700 kg (8,200 lb) counterweight	✓	
Auto warm up	✓		4200 kg (9,300 lb) counterweight for heavy-duty boom and stick		✓
Auto two-speed travel	✓		4700 kg (10,400 lb) counterweight for Super Long Reach		✓
Boom and stick drift reduction valve	✓		Semi-HD swing frame for HD and SLR		✓
Element type main hydraulic filter	✓		Base frame with standard track rollers and standard carrier rollers	✓	
Slider joysticks	✓		Base frame with HD track rollers and standard carrier rollers		✓
Tandem type electronic main pump	✓		Shovel crane package		✓
Hammer return filter circuit		✓	<b>BOOM, STICKS AND LINKAGES</b>		
Combined flow/high pressure auxiliary circuit		✓	5.7 m (18'8") Reach boom	✓	
Medium pressure auxiliary circuit		✓	5.7 m (18'8") HD Reach boom		✓
Quick coupler circuit for Cat Pin Grabber		✓	2.9 m (9'6") stick	✓	
			2.9 m (9'6") HD stick		✓
			Super Long Reach 8.85 m (29'0") boom		✓
			Super Long Reach 6.28 m (20'7") stick		✓
			Bucket linkage, B1-family without lifting eye, Cat Grade	✓	
			Bucket linkage, B1-family with lifting hook for shovel crane		✓
			Bucket linkage, A-family without lifting eye, SLR		✓

(continued on next page)

## Standard and Optional Equipment (continued)

Standard and optional equipment may vary. Consult your Cat dealer for details.

	Standard	Optional		Standard	Optional
<b>ELECTRICAL SYSTEM</b>			<b>SERVICE AND MAINTENANCE</b>		
1,000 CCA maintenance-free batteries (×2)	✓		Scheduled Oil Sampling (S·O·S <sup>SM</sup> ) ports	✓	
Centralized electrical disconnect switch	✓		QuickEvac <sup>TM</sup> maintenance ready		✓
Programmable time-delay LED working lights	✓		Grouped location for engine oil and fuel filters	✓	
LED chassis light, LH and RH boom lights for Reach and SLR, cab lights	✓		Ground-level second dipstick for engine oil	✓	
Premium surround lighting package		✓	Radiator screen		✓
<b>CAT TECHNOLOGY</b>			<b>SAFETY AND SECURITY</b>		
Cat Product Link <sup>TM</sup>	✓		Cat Command remote control		✓
Work tool recognition	✓		Rearview camera and side RH mirror	✓	
Work tool tracking*	✓		360° visibility		✓
Laser catcher		✓	Neutral lever (lock out) for all controls	✓	
Cat Grade with 2D and offset memory (not available on SLR)	✓		Anti-skid plate and countersunk bolts on service platform	✓	
Cat Grade with Advanced 2D (not available on SLR)		✓	Ground-level accessible secondary engine shutoff switch in cab	✓	
Cat Grade with 3D connectivity (not available on SLR):		✓	Boom and stick lowering control valves (shovel crane only)		✓
– Virtual Reference Station**			RH handrail and handhold (ISO 2867 compliant)	✓	
– Internet Base Service Station**			Signaling/warning horn	✓	
– Trimble Connected Community**					
Cat Assist:	✓				
– Grade Assist					
– Boom Assist					
– Bucket Assist					
– Swing Assist					
Cat Payload:	✓				
– Static weigh					
– Semiauto calibration					
– Payload/cycle information					
– USB reporting capability					
2D E-Fence:	✓				
– E-ceiling					
– E-floor					
– E-swing					
– E-wall					
– E-cab avoidance					
Auto hammer stop	✓				
Remote Services capability	✓				
Auto Dig Boost	✓				

\*Paired with PL161 attachment locator.

\*\*Subscription required.

# 320 Attachments

## Dealer Installed Kit and Attachments

Attachments may vary. Consult your Cat dealer for details.

### CAB

- Radial lower wiper for 70/30 with washer
- LH/RH electrical pedal for tool control
- Rain protector plus cab light cover
- 75 mm (3") retractable seat belt

### SAFETY AND SECURITY

- Bluetooth® key fob

### SERVICE AND MAINTENANCE

- Grease gun holder

### ELECTRICAL

- Jump start wiring

### GUARDS

- Swivel guard
- Side rubber bumper
- Falling object guard system (not compatible with cab light cover, rain protector)
- Mesh guard full front (not compatible with cab light cover, rain protector)
- Mesh guard lower half front

## Cab Options

	Comfort	Deluxe
ROPS, standard sound suppression	●	●
High-resolution 203 mm (8 in) LCD touch screen monitor	●	○
High-resolution 254 mm (10 in) LCD touch screen monitor	○	●
High-resolution 254 mm (10 in) LCD touch screen monitor + additional monitor (for use with Cat Grade Advanced 2D and 3D)	○	○
Auto bi-level air conditioner	●	●
Jog dial and shortcut keys for monitor control	●	●
Keyless push-to-start engine control	●	●
Height-adjustable console, three steps with tool	●	X
Height-adjustable console, infinite with no tool	X	●
Mechanically adjustable seat suspension	●	X
Heated seat with air-adjustable suspension	X	●
51 mm (2 in) seat belt	●	●
Fixed left-side console	●	X
Tilt-up left-side console	X	●
Bluetooth integrated radio	●	●
12V DC outlets	●	●
Document storage	●	●
Rear head storage net and lunchbox storage net	X	●
Cup and bottle holders	●	●
Openable two-piece front window	●	●
Upper radial wiper with washer	●	●
Openable steel hatch	●	X
Openable polycarbonate skylight hatch	X	●
LED dome light	●	●
Floor welcome light	●	●
Roller front sunscreen	●	●
Roller rear sunscreen	○	○
Washable floor mat	●	●
Beacon ready	●	●

● Standard

○ Optional

X Not available

For more complete information on Cat products, dealer services, and industry solutions, visit us on the web at [www.cat.com](http://www.cat.com)

© 2020 Caterpillar  
All rights reserved

Materials and specifications are subject to change without notice. Featured machines in photos may include additional equipment. See your Cat dealer for available options.

CAT, CATERPILLAR, LET'S DO THE WORK, their respective logos, "Caterpillar Corporate Yellow," the "Power Edge" and Cat "Modern Hex" trade dress as well as corporate and product identity used herein, are trademarks of Caterpillar and may not be used without permission.

Based on the Labor, Safety and Health Laws in Japan, employer of small construction equipment are required to provide specific training for all operators on machines with ship weight less than 3 metric ton. For machines greater than 3 metric ton, operator needs to obtain operator license certification from a Government approved registered training school.

AEXQ2157-04 (10-2020)  
Replaces AEXQ2157-03  
Build Number: 07D  
(Japan)

