



Cat[®] TH306D

AG HANDLER

FEATURES:

- Power Train** – Designed for the livestock farmer, the Cat[®] TH306D features a powerful 74.4 kW (100 hp/bhp) engine coupled to a two speed hydrostatic transmission, allowing engine speed and forward speed to be independently controlled.
- Frame, Boom and Linkage** – Designed for durability. Easy to access greasing points mean a long, trouble free life for the machine. A Z-bar linkage delivers powerful breakout forces and fast cycle times.
- Powerful Hydraulics** – Designed to operate hydraulically powered work tools such as straw spreaders and animal feeder buckets. Rear hydraulic services can also operate work tools as well as tipping trailers.
- Cab** – The cab is designed with a multi function joystick gives the operator a comfortable working environment. The unique “Operator Preferences” feature allows the machine to be tuned to suit individual operators. Options include a heated air suspension seat, large display screen with pre-loaded load charts, rear view camera, reversing sensors and air conditioning.

Specifications

Engine

Model	TCD3.6 L4*	
Gross Power	74.4 kW	100 hp/bhp
Gross Power	101.2 CH/CV/PS	
Maximum Torque	410 N·m	
Bore	98 mm	
Stroke	120 mm	
Displacement	3.6 L	

*Meets EU Stage IIIA equivalent emission standards.

Weights

Operating Weight with Carriage and Forks* 6107 kg

*Represents machine configuration of 74.4 kW (100 hp/bhp) engine on standard 405/70 T20 MPT01 tires.

Operating Specifications

Rated Load Capacity	2800 kg
Maximum Lift Height	5.8 m
Capacity at Maximum Lift Height	2500 kg
Maximum Forward Reach	3.1 m
Capacity at Maximum Forward Reach	1150 kg
Outside Turning Radius over Tires	3.7 m
Outside Turning Radius over Forks	4.4 m

Service Refill Capacities

Fuel Tank	104 L
Hydraulic Tank	120 L

Brakes

Service Brakes	Boost assisted on front axle
Parking Brake	SAHR on front axle

Transmission

Type	Hydrostatic with 2 speed on the move range change
Forward	
1	0 to 20 km/h
2	0 to 32 km/h
Reverse	
1	0 to 20 km/h
2	0 to 32 km/h mph

Electrical

Battery	1 × 12V 1,000 CCA Battery
Alternator Output	12V/150A



TH306D Ag Handler

Hydraulic System

System Type	Open Center
Pump Type	Gear
Maximum Pump Capacity	95 L/min
System Pressure	275 bar
Auxiliary Hydraulic Pressure	245 bar
Auxiliary Hydraulic Flow	
Boom Head – Intermittent	90 L/min
Boom Head – Continuous	90 L/min
Machine Rear	80 L/min

Boom Performance

Boom Up	6.5 sec
Boom Down	5.5 sec
Tele Out	5 sec
Tele In	5 sec
Crowd Forward (Dump)	3 sec
Crowd Backward	3.5 sec
Combined	
Up and Out	15 sec
Down and In	9 sec

Axles

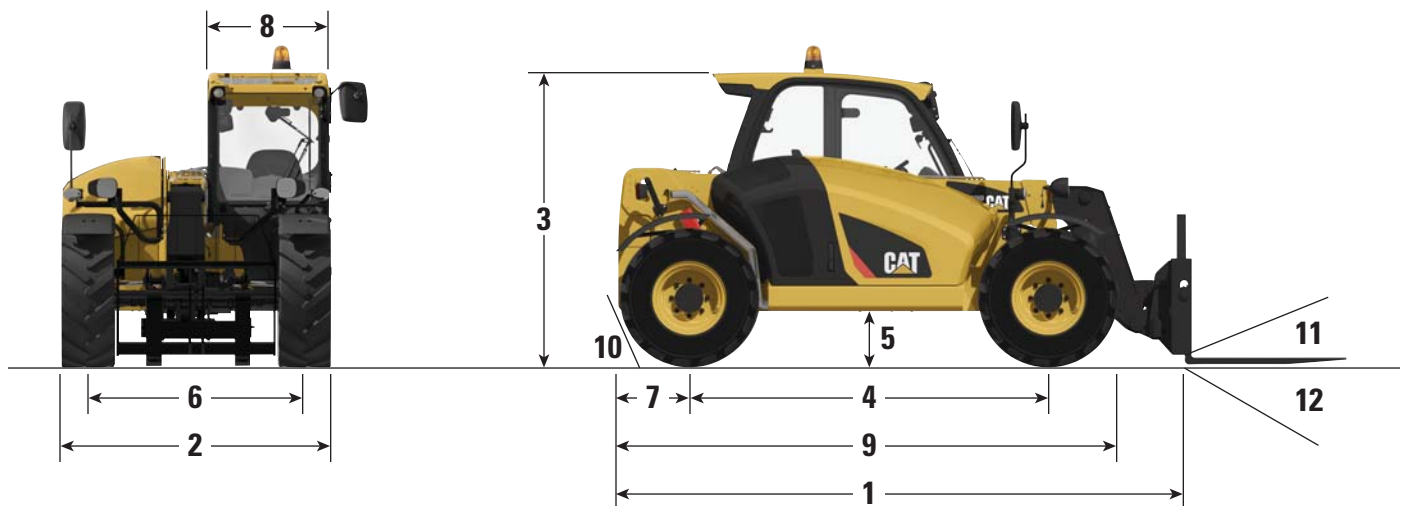
Front Axle	Planetary reduction hubs with limited slip differential
Rear Axle	Open differential with planetary reduction hubs

Tires

Standard	Mitas 405/70 T20 MPT01
Options	Michelin 400/70 R20 XMCL

Performance

Drawbar Pull	57 kN
Boom Breakout Force	31 kN
Bucket Breakout Force	52 kN
Quick Coupler Rotation	145°
Noise Levels	
In Cab	74 dB(A)
External	106 dB(A)
Towable Mass	
Hydraulically Braked	8000 kg

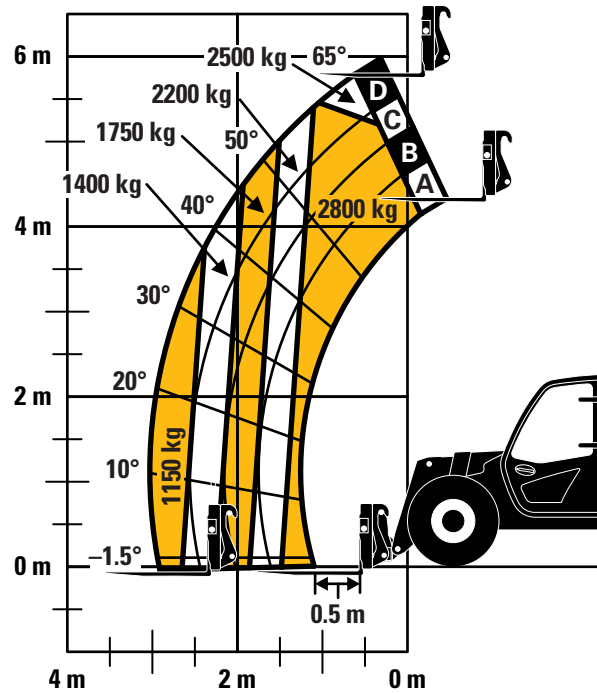


Dimensions (All dimensions are approximate.)

1 Overall Length to Front of Carriage	4400 mm	7 Overhang	920 mm
2 Overall Width (standard tires)	2100 mm	8 Cab Width	900 mm
3 Overall Height (standard tires)*	2250 mm	9 Machine Length	4400 mm
4 Wheelbase	2770 mm	10 Departure Angle	66°
5 Ground Clearance	390 mm	11 Maximum Fork Crowd Angle	24°
6 Track	1672 mm	12 Maximum Fork Dump Angle	121°

*Add 200 mm for beacon.
Add 40 mm for top guard.

Load Chart and Dimensions



NOTICE

Rated lift capacities shown are with machine equipped with carriage and pallet forks. The machine must be level on a firm surface with undamaged, properly inflated tires. Machine specifications and stability are based on rated lift capacities at specific boom angles and boom lengths. (If specifications are critical, the proposed application should be discussed with your dealer.)

DO NOT exceed rated lift capacity loads, as unstable and dangerous machine conditions will result.

DO NOT tip the machine forward to determine the allowable load.

Use only approved attachments with proper material handler model/attachment load capacity charts displayed in the operator's cab.

Due to continuous product improvements, machine specifications and/or equipment changes may be made without prior notification.

TH306D Ag Handler

Standard and Optional Equipment (Standard and Optional equipment may vary. Consult your Cat dealer for details.)

	Standard	Optional		Standard	Optional
Cab ROPS and FOPS			Tires		
Longitudinal Stability Indicator	✓	—	Mitas MPT01 405/70 T20	✓	—
Reversing Camera	—	✓	Michelin 400/70 R20 XMCL	—	✓
Reversing Sensors	—	✓	Tow Hitches		
Large Electronic Display Screen	—	✓	Retrieval Hitch	—	✓
Sunscreen	✓	—	Hydraulic Pick Up Hitch	—	✓
Mechanical Suspension Seat with Seat Belt	✓	—	EEC Manual Hitch	—	✓
Air Suspension Seat with Seat Belt	—	✓	EEC Automatic Hitch	—	✓
Heated Air Suspension Seat with Seat Belt	—	✓	EEC Automatic Hitch with Piton	—	✓
Roof Wiper	✓	—	Trailer Braking Valve	—	✓
Screen Guard	—	✓	Quick Couplers		
Roof Guard	✓	—	Manual Cat “IT” Interface	✓	—
Heater/De-mister	✓	—	Hydraulic Cat “IT” Interface	—	✓
Air Conditioning	—	✓	• Competitive couplers are available, please consult your Cat dealer for details.		
Engine Speed Set	✓	—	Work Tools		
Multi Function Joystick Controller with FNR	✓	—	Floating Fork Carriage	—	✓
Column Mounted FNR Lever	—	✓	ISO Class 3 Fixed Fork Carriage	—	✓
Front and Rear Windscreen Wipers	✓	—	Side Shift Carriage	—	✓
SAHR Parking Brake	✓	—	1 m ³ General Purpose Bucket	—	✓
Electrical			1.5 m ³ Rehandling Bucket	—	✓
1 × 12V 1,000 CCA Battery	✓	—	1.0 m ³ Multi Purpose Bucket	—	✓
Block Heater 240 Volt	—	✓	2.0 m ³ Grain Bucket	—	✓
Work Lights, 4 × Cab Mounted (2 front, 2 rear) 2 × Boom Mounted	—	✓	Grapple Bucket	—	✓
Product Link™ Ready, Version 641	—	✓	Muck Fork and Grapple	—	✓
Seven (7) Pin Trailer Service	—	✓	Bale Handler	—	✓
Reverse Alarm	✓	—	Sweeper Collector	—	✓
Rotating Beacon	—	✓			
Other Equipment					
Boom Brushes	✓	—			
Ride Control with Boom Float	—	✓			
Single Auxiliary Service to Boom Head	✓	—			
2 nd Auxiliary Service to Boom Head	—	✓			
Auxiliary Service to Rear	—	✓			
Rear Hitch Mirror, Flat	—	✓			
Rear Hitch Mirror, Convex	—	✓			
Tool Box	—	✓			
Boom Safety Brace	—	✓			

For more complete information on Cat products, dealer services, and industry solutions, visit us on the web at www.cat.com

© 2017 Caterpillar
All rights reserved

Materials and specifications are subject to change without notice. Featured machines in photos may include additional equipment. See your Cat dealer for available options.

CAT, CATERPILLAR, SAFETY.CAT.COM, their respective logos, “Caterpillar Yellow” and the “Power Edge” trade dress, as well as corporate and product identity used herein, are trademarks of Caterpillar and may not be used without permission.

AEHQ7929 (06-2017)
(AME, APD, LACD)

