



Cat[®] Box Blade

SKID STEER LOADERS
MULTI TERRAIN LOADERS
COMPACT TRACK LOADERS

Cat[®] Box Blades are designed for grading and leveling of large commercial properties, housing pads, roadways and parking lots. Two models are available, 2.1 m (7 ft) and 2.4 m (8 ft), and are designed to operate both manually and automatically with the use of Laser or GPS grading systems.

Features:

AccuGrade™ technology

- Blade comes standard ready to work in manual mode. Requires 14-pin work tool harness with proper joysticks. Can be outfitted with AccuGrade technology through local SITECH[®] Dealer.

Curved moldboards

- Front and rear curved moldboards allow material to roll and fold, improving capacity and performance.

Dual parabolic mirrors

- Dual parabolic mirrors provide full visibility to the front edge, allowing operator to identify how much the blade is loading and see out to the corners of the Box Blade.

Centrally located electronics

- Technology components are centrally located and simply route to their respective harnesses back to this location on the tool. Then, a single harness routes to the control module in the cab or on the tool.

Wear indicating cutting edges

- Wear indicating cutting edges feature 20% more wear material on the ground engaging section of the edge. Additionally, indicating when it is time to flip or replace the edge.

Dual front wheels

- Dual front wheels are mounted to an independent axle and on casters to provide stability in both directions of travel. These wheels are air filled and will provide support for blade operation.

Bolt-on reversible side cutters and wings

- Bolt-on side cutters and wings improve the life of the tool. Side cutters are reversible and box wings are replaceable. Both are bolt-on for simple replacement.

Protected hydraulic and electrical components

- Hydraulic valve and Electronic Control Module (ECM) is safely mounted within the internal frame of the tool, protected from damage.

Standard fixed masts

- Fixed masts provide great performance for single or dual laser technology configurations.

Serrated steps

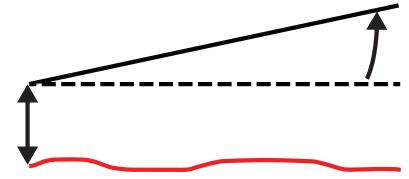
- Serrated bolt-on step provides safe ingress and egress from machine cab. Additional weld-on serrated steps on the blade ensure safe receiver adjustment, install or removal.



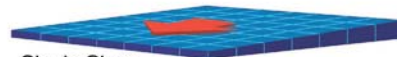
Technology Package Options



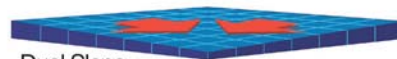
Dual Laser with Standard Fixed Masts:
Dual slope control or slope and elevation control. High levels of accuracy are achieved for flat, slope work and finished grading.



Flat Slope



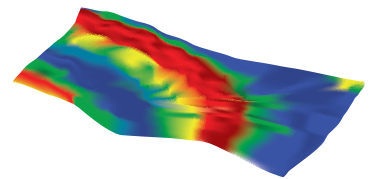
Single Slope



Dual Slope



Single or Dual 3D GPS: GPS systems can be integrated with other machines on the job site and provide full grading capability. Line of sight to the sky is required for functionality of GPS systems. Standard masts in this configuration will need to be replaced for more rigid mounts.



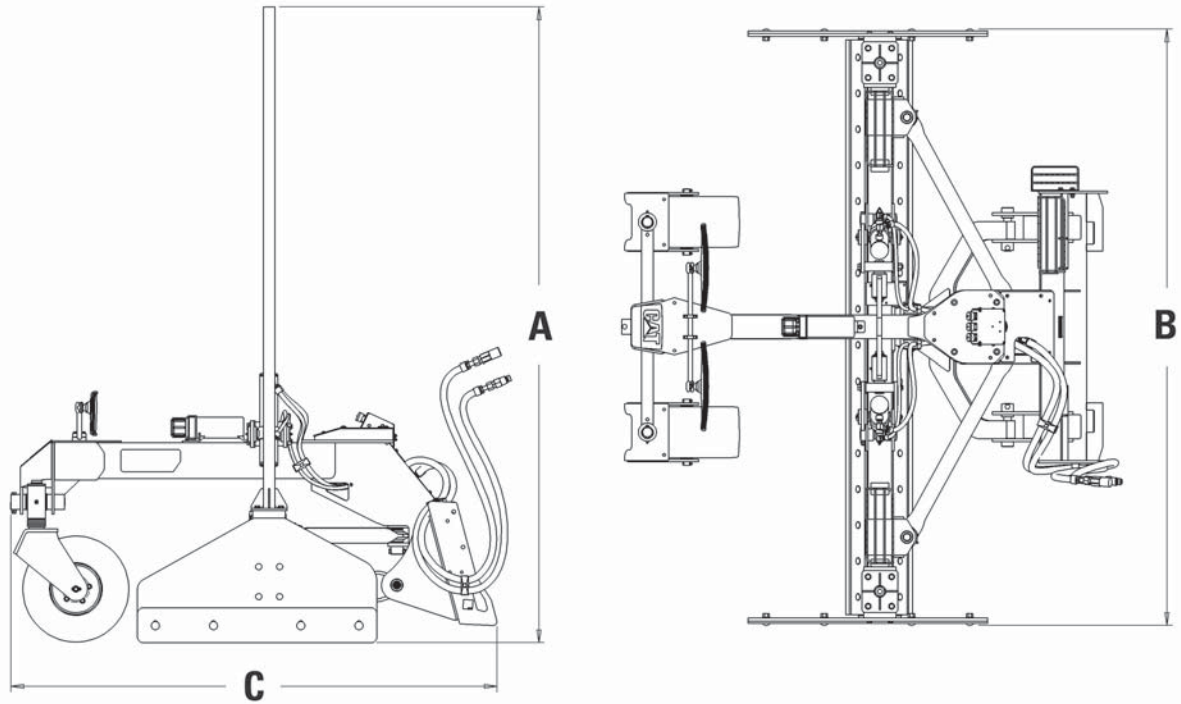
Additional Options:

Powered Masts

Universal Total Station – Complete Machine Control



Specifications



			BB121		BB124	
A Overall height	mm	(in)	2694	(106)	2694	(106)
B Overall width	mm	(in)	2221	(87)	2526	(99)
Working width	mm	(in)	2131	(84)	2436	(96)
C Length	mm	(in)	2062	(81)	2062	(81)
Weight	kg	(lb)	907	(2,000)	975	(2,150)
Optimum hydraulic flow	L/min	(gpm)	30-85	(8-22)	30-85	(8-22)
Optimum hydraulic pressure	bar	(psi)	140-170	(2,031-2,466)	140-170	(2,031-2,466)
Tilt	degrees		15		15	
Raise	mm	(in)	127	(5)	127	(5)
Lower	mm	(in)	102	(4)	102	(4)

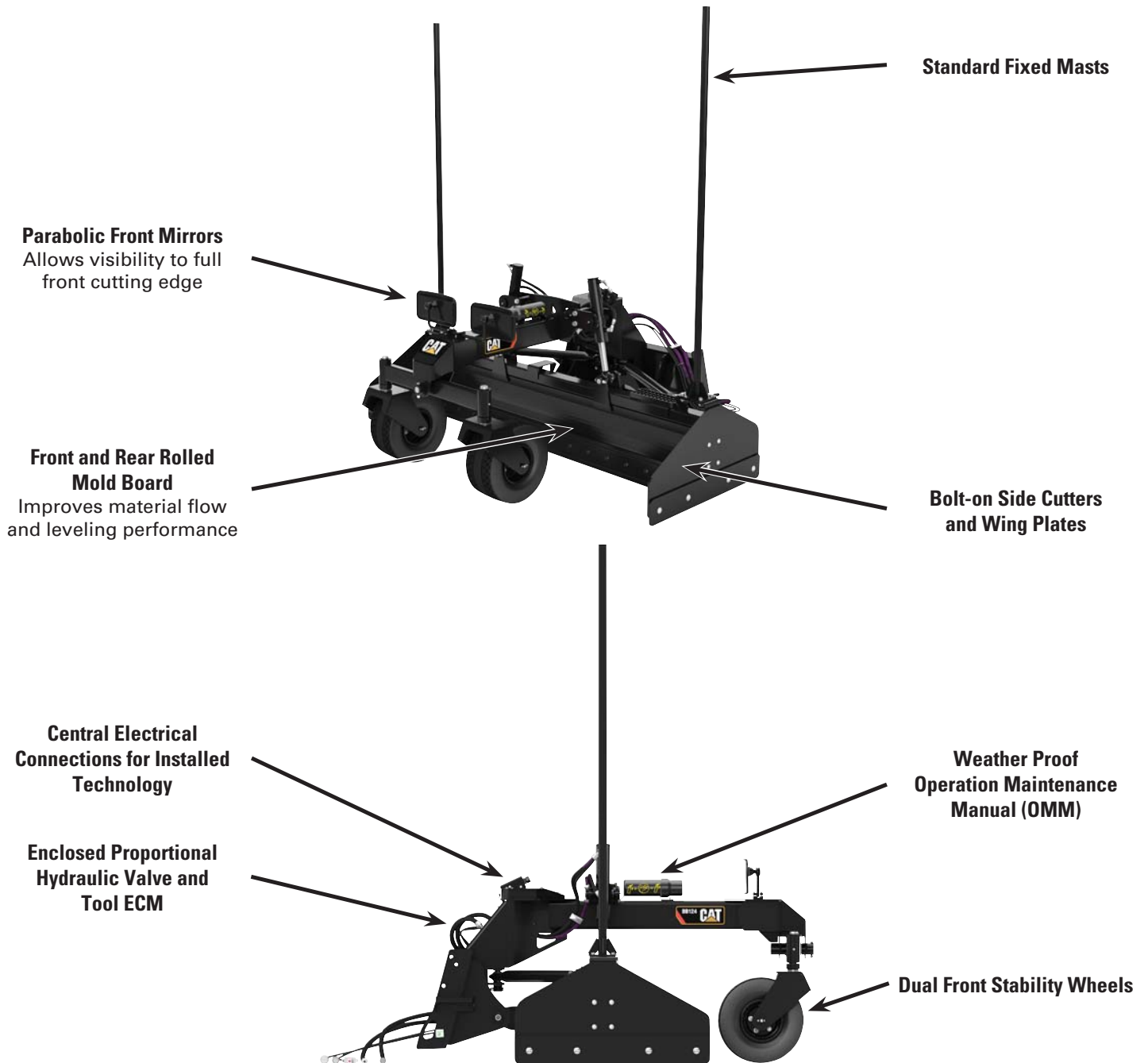
Compatibility

Model	Machine Compatibility
BB121	216B3*, 226B3*, 226D, 232D, 236D, 239D, 242D, 246D, 249D, 257D, 259D, 262D, 272D2, 272D2 XHP, 277D, 279D, 287D, 289D, 297D2, 297D2 XHP, 299D2, 299D2 XHP
BB124	216B3*, 226B3*, 226D, 232D, 236D, 239D, 242D, 246D, 249D, 257D, 259D, 262D, 272D2, 272D2 XHP, 277D, 279D, 287D, 289D, 297D2, 297D2 XHP, 299D2, 299D2 XHP

*Auxiliary joystick required.

Machine model availability and attachment vary by region. Please contact your local dealer for availability.

Cat® Box Blade



For more complete information on Cat products, dealer services, and industry solutions, visit us on the web at www.cat.com

AEHQ8017 (05-2017)

© 2017 Caterpillar
All rights reserved

Materials and specifications are subject to change without notice. Featured machines in photos may include additional equipment. See your Cat dealer for available options.

CAT, CATERPILLAR, SAFETY.CAT.COM, their respective logos, "Caterpillar Yellow" and the "Power Edge" trade dress, as well as corporate and product identity used herein, are trademarks of Caterpillar and may not be used without permission.

