

Cat® RP12000 E Quick Reference Guide

LEHQ0054-00

WARNING: This Quick Reference Guide is not a substitute for reading the operator's manual. To reduce the risk of injury or death, user must read and understand operator's manual before using this product.

WARNING

Do not connect to a building's electrical system unless the generator and transfer switch have been properly installed and the electrical output has been verified by a qualified electrician. The connection must isolate the generator power from utility power and must comply with all applicable laws and electrical codes.

⚠ DANGER

Using a generator indoors CAN KILL YOU IN MINUTES.
Generator exhaust contains carbon monoxide. This is a poison you cannot see or smell.

NEVER use inside a home or garage, EVEN IF doors and windows are open.

Only use OUTSIDE and far away from windows, doors, and vents.

Avoid other generator hazards.
READ MANUAL BEFORE USE.

What's in the box?

Item No.	Description	Qty.
Tools		
1	13/15 mm wrench	2
2	14/17 mm wrench	2
3	Spark plug wrench	1
4	Screwdriver	1
Servicing Items		
1	32 fl. oz. (946 ml) of oil	2
2	Oil funnel	1

All fixtures and fittings are supplied in the box, as well as the above items.

Assembling the unit

1 Remove both 8 mm bolts from the pallet and frame. Remove both wood blocks.

2 Install the feet.

3 Install the wheels.

4 Assemble the lifting eye. Torque bolts to 26 lb-ft (35 N-m).

5 Assemble the handle.

6 Connect the battery (negative).

7 Add Oil using funnel.

8 Add Oil to this level.

Register your product for warranty



Please register your generator for warranty before starting. Missing parts or accessories or need assistance with this unit?
 USA: cat.com/homeandoutdoorpower-support
 CAN: cat.com/homeandoutdoorpower-support-CA
844.797.6387

Starting the unit *(Please register your product for warranty before starting.)*

1 Add oil.

2 Add fuel.

3 If the engine is cold, pull the choke knob out before starting the engine.

4 Rotate the fuel valve to the OPEN position.

5 Rotate the start switch to RUN.

6 Complete the rotation to START.

7 Once the engine is warm, slowly push the choke knob in.

8 Connect your devices. (See "Using the generator" for more information)

Stopping the unit

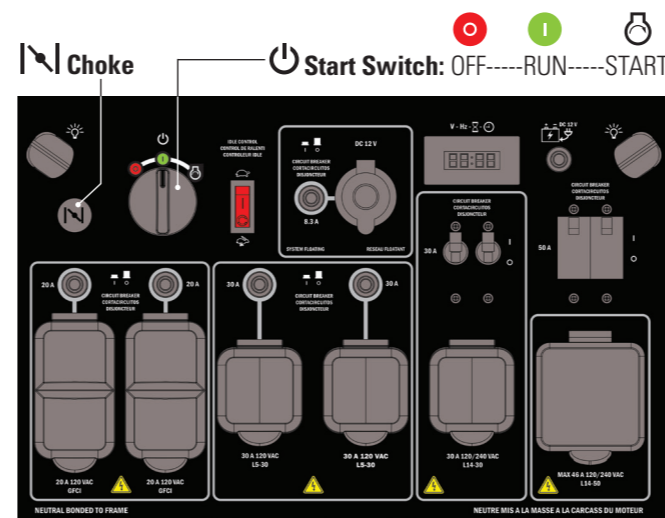
9 Turn circuit breaker to the On "1" Position.

1 Remove all devices connected to the unit.

2 Rotate the start switch to the OFF position. (Note 8)

3 Close the fuel valve.

Control panel layout



Using the generator

- Make sure the generator can supply enough running and starting watts for the items you will power at the same time.
- Start the generator with nothing connected.
- Plug in and turn on the first load, preferably the largest load you have.
- Permit the generator output to stabilize (engine runs smoothly and attached device operates properly).
- Plug in and turn on the next load.
- Again, permit the generator to stabilize.
- Repeat previous two steps for each additional load. **IMPORTANT:** Never add more loads than the generator capacity. Take special care to consider surge loads in generator capacity.
- NOTE:** Turn the generator switch to the off "0" position when not in use to avoid battery drain.

Troubleshooting

Issue	Possible Cause	Solution	Check
Engine Will Not Start	Generator switch in the off "0" position	Turn the generator switch to the correct position.	Start the engine.
	Choke knob in the wrong position	Place the choke knob in the correct position.	
	No fuel	Fill the fuel tank.	
	Bad or contaminated fuel	Check the fuel.	
	Not enough oil in the engine	Check the oil level. If low, add the recommended oil.	
	Dirty air filter	Clean the air filter.	
	No fuel at the carburetor	Make sure the fuel switch is in the on "1" position.	
	Engine flooded	Wait 5 minutes.	
	No spark	Replace the spark plug.	
	No battery power	Check the battery. If the battery is providing less than 12.7 volts, charge the battery, if providing less than 12.4 volts, replace the battery.	
Engine Runs Rough (no load)	Dirty air filter	Stop the engine and check the air filter. Clean if needed.	Start the engine / check if it runs rough
	Choke knob in the wrong position	Place the choke knob in the correct position.	
	If the engine still runs rough:	Take the unit to an authorized service provider.	
Engine Shuts Down	Out of fuel	Check the fuel. Fill the tank if necessary.	Start the engine / check if it shuts down.
	Not enough oil in the engine	Check the oil level. If low, add the recommended oil.	
	Dirty air filter	Clean the air filter.	
	Generator overloaded	Unplug some of the devices.	
	If the engine still shuts down:	Take the unit to an authorized service provider.	
Engine Runs Rough (with load)	Dirty air filter	Stop the engine and check the air filter. Clean if needed.	Start the engine / check if it runs rough.
	Generator overloaded	Unplug some of the devices.	
	Defective device plugged in	Unplug defective device.	
	If the engine still runs rough:	Take the unit to an authorized service provider.	
Engine Runs, But Generator Does Not Provide Power	Circuit breaker is open	Close the circuit breaker.	Start the engine / check for power.
	Bad connection	Stop the engine and check the connections.	
	Defective power cord	Replace the cord.	
	Defective device plugged in	Unplug defective device.	
	If there is still no power:	Take the unit to an authorized service provider.	

QR code and contact info



USA CAN

For more information, including setup and usage videos.
 USA: cat.com/homeandoutdoorpower
 CAN: cat.com/homeandoutdoorpower-CA

For more information regarding this product, contact **844.797.6387** or homeandoutdoorpower@cat.com.

© 2017 Caterpillar. All Rights Reserved. CAT, CATERPILLAR, their respective logos, "Caterpillar Yellow," the "Power Edge" trade dress, as well as corporate and product identity used herein, are trademarks of Caterpillar and may not be used without permission.

