



# Cat<sup>®</sup> 304.5E2 XTC

MINI HYDRAULIC EXCAVATOR  
WITH XTRA TOOL CARRIER

## FEATURES:

The Cat<sup>®</sup> 304.5E2 XTC Mini Excavator is the first model in the Xtra Tool Carrier (XTC) lineup and delivers efficient performance, durability and versatility in a compact design. The 304.5E2 XTC features the following:

### XTC

- The innovative skid steer loader interface adds versatility and work tool integration with the use of compact loader attachments. Coupler operation is controlled through the standard machine joysticks by pressing the XTC switch in the operator station.
- The 304.5E2 XTC allows the operator to achieve improved productivity in material carrying applications and reduced backfilling times.
- Operators can complete multiple applications at a single job site with a single machine.
- Recommended work tools include: General Purpose Buckets, Multi-Purpose Buckets, Forks, Dozer Blades, Brooms, Power Box Rakes and Trenchers.

### QUALITY

- The durable hoods and frame and the compact radius design of the 304.5E2 XTC let you work confidently in confined areas.
- The operator environment includes a high quality suspension seat, easy to adjust armrests and 100% pilot controls.

### EFFICIENCY

- High Definition Hydraulic System provides a load sensing and flow sharing capability leading to operational precision, efficient performance and greater control.
- Power on Demand provides optimal efficiency and performance the moment you need it. This automatic system ensures fuel efficiency through appropriate engine rating to meet all operational needs as required.

## PERFORMANCE

- The 304.5E2 XTC uses the proven platform design of the 304E2 to deliver ultimate power and reliability.
- Undercarriage upgraded to offer superior durability.
- COMPASS Control Panel is a standard feature that allows the operator to easily adjust auxiliary flows, activate auto idle for improved fuel efficiency and utilize the security system to ensure protection of valuable assets with the simple touch of a button.
- The Site Reference System included in the COMPASS monitor provides output from pitch and roll sensors to aid in grading and level trenching.

## SERVICEABILITY

- Convenient service and maintenance requirements include ease of access to daily check points, 500 hour engine oil and filter change period, 500 hour grease interval on front implement, S-O-S<sup>SM</sup> oil sampling valve and overall long term durability.

## SAFETY

- Cat Mini Excavators are ROPS, TOPS and Top Guard Level 1 certified and include the Cat Interlock (hydraulic lockout) System, a certified accumulator which allows for auxiliary pressure to be released, making connecting and disconnecting work tools safer and easier, and a travel alarm. All of these safety features are standard on the E2 model lineup (travel alarm optional in Europe).

## Specifications

### Engine

Engine Model*	Cat C2.4	
<b>Rated Net Power @ 2,200 rpm</b>		
ISO 9249/EEC 80/1269	30 kW	40.2 hp
<b>Gross Power</b>		
ISO 14396	31.2 kW	41.8 hp
Bore	87 mm	3.4 in
Stroke	102.4 mm	4 in
Displacement	2.4 L	146 in <sup>3</sup>

\*Meets U.S. EPA Tier 4 Final/EU Stage IIIA emission standards.

### Weights\*

Weight – Canopy, Standard Stick	3925 kg	8,655 lb
Weight – Canopy, Long Stick	3955 kg	8,721 lb
Weight – Cab, Standard Stick	4050 kg	8,930 lb
Weight – Cab, Long Stick	4080 kg	8,996 lb

\*Weight includes counterweight, rubber tracks, bucket, operator, full fuel and auxiliary lines.



# 304.5E2 XTC Mini Hydraulic Excavator with Xtra Tool Carrier

## Swing System

Machine Swing Speed	10 rpm
Boom Swing – Left (without stop)*	80°
Boom Swing – Left (with stop)*	55°
Boom Swing – Right	50°

\*Automatic swing brake, spring applied, hydraulic release.

## Travel System

Travel Speed – High	5.1 km/h	3.2 mph
Travel Speed – Low	3.1 km/h	1.9 mph
Maximum Traction Force – High Speed	16.9 kN	3,799 lb
Maximum Traction Force – Low Speed	31.0 kN	6,969 lb
Ground Pressure – Canopy Standard Stick	28.7 kPa	4.2 psi
Ground Pressure – Canopy Long Stick	28.9 kPa	4.2 psi
Ground Pressure – Cab Standard Stick	29.6 kPa	4.3 psi
Ground Pressure – Cab Long Stick	29.8 kPa	4.3 psi
Gradeability (continuous operation)	20°	
Gradeability (maximum)	30°	

## Service Refill Capacities

Cooling System	5.5 L	1.5 gal
Engine Oil	9.5 L	2.5 gal
Fuel Tank	57 L	15.1 gal
Hydraulic Tank	25 L	6.6 gal
Hydraulic System	58 L	15.3 gal

## Hydraulic System

Load Sensing Hydraulics with Variable Displacement Piston Pump		
Pump Flow at 2,200 rpm	100 L/min	26.4 gal/min
Operating Pressure – Equipment	245 bar	3,553 psi
Operating Pressure – Travel	245 bar	3,553 psi
Operating Pressure – Swing	216 bar	3,132 psi
Auxiliary Circuit – Primary		
245 bar/3,553 psi	70 L/min	18.5 gal/min
Auxiliary Circuit – Secondary		
(174 bar/2,524 psi)	25 L/min	6.6 gal/min
Digging Force – Stick (standard)	21.6 kN	4,856 lb
Digging Force – Stick (long)	19.5 kN	4,384 lb
Digging Force – Bucket	37.8 kN	8,498 lb

## Blade

Width	1950 mm	76.8 in
Height	325 mm	12.8 in
Dig Depth	470 mm	18.5 in
Lift Height	400 mm	15.7 in

## Cab

Dynamic Operator Sound Pressure Level (ISO 6396:2008)	81 dB(A)
Exterior Sound Power Level (ISO 6395:2008)*	96 dB(A)

\*European Union Directive “2000/14/EC”

## Certification – Cab and Canopy

Roll Over Protective Structure (ROPS)	ISO 12117-2
Tip Over Protective Structure (TOPS)	ISO 12117
Top Guard	ISO 10262 (Level I)

## Operating Specifications

Stick Length – Standard	1315 mm	52 in
Stick Length – Long	1615 mm	64 in
Machine Overhang	0 mm	0 in

## Operating Specifications – Loader

Maximum Height – 1829 mm (72 in)		
MP Bucket with Cutting Edge	935 mm	37 in
Reach at Maximum Lift and Dump		
– 1829 mm (72 in) MP Bucket	2040 mm	80 in
Rack Back Angle at Maximum Height		
– 1829 mm (72 in) MP Bucket	48°	
Maximum Dump Angle		
– 1829 mm (72 in) MP Bucket	27°	
Breakout Force, Lift		
– 1829 mm (72 in) MP Bucket	720 kg	1,588 lb
Breakout Force, Tilt		
– 1829 mm (72 in) MP Bucket	850 kg	1,874 lb
Lift Capacity		
– 1829 mm (72 in) MP Bucket	525 kg	1,158 lb
– 1070 mm (42 in) Forks	600 kg	1,323 lb
Rated Operating Capacity* (maximum height)		
– 1829 mm (72 in) MP Bucket	525 kg	1,158 lb
Rated Operating Capacity* (ground)		
– 1829 mm (72 in) MP Bucket	850 kg	1,874 lb

\*Rated operating capacity based on hydraulic limit (ROC is the smaller of the hydraulic limit or 50% of the static tipping load).

## Undercarriage

Number of Carrier Rollers	1
Number of Track Rollers	4
Track Roller Type	Center Flange

# 304.5E2 XTC Mini Hydraulic Excavator with Xtra Tool Carrier

## Lift Capacities at Ground Level (Standard Stick)\*

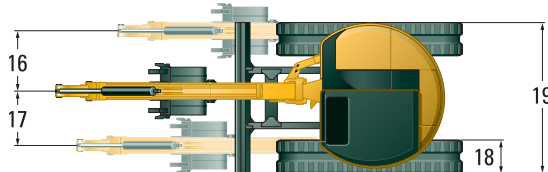
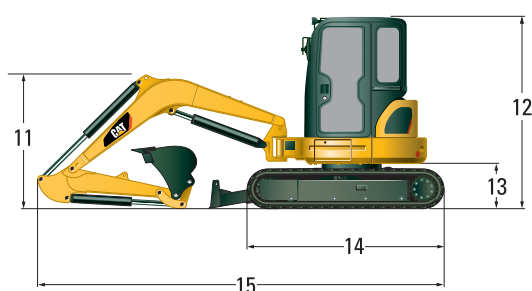
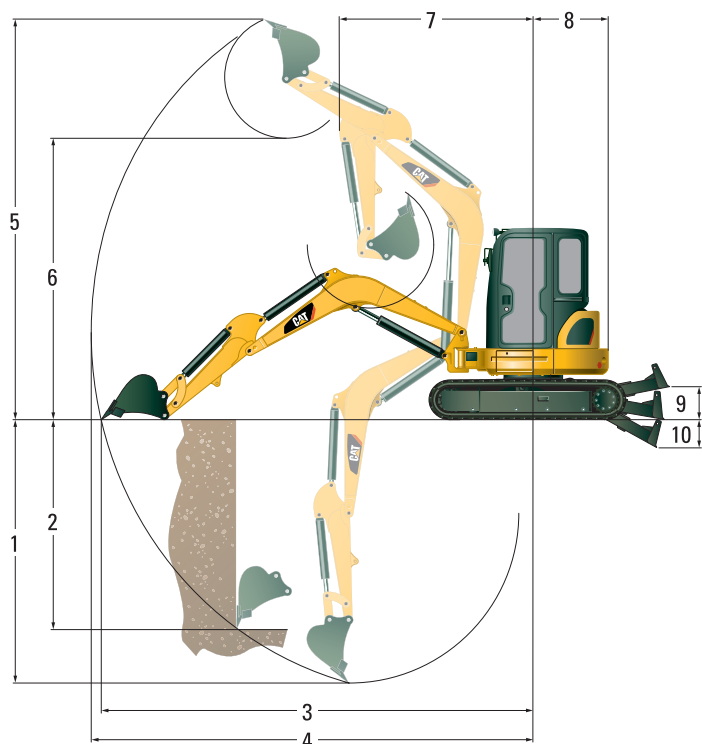
Lift Point Radius		3000 mm (118 in)		4500 mm (177 in)	
		Front	Side	Front	Side
<b>Blade Down</b>	kg	1610	920	1040	590
	(lb)	(3,550)	(2,029)	(2,293)	(1,301)
<b>Blade Up</b>	kg	830	830	530	530
	(lb)	(1,830)	(1,830)	(1,169)	(1,169)

\*The above loads are in compliance with hydraulic excavator lift capacity rating standard ISO 10567:2007 and they do not exceed 87% of hydraulic lifting capacity or 75% of tipping capacity. The excavator bucket weight is not included on this chart.

## Lift Capacities at Ground Level (Long Stick)\*

Lift Point Radius		3000 mm (118 in)		4500 mm (177 in)	
		Front	Side	Front	Side
<b>Blade Down</b>	kg	1570	910	860	480
	(lb)	(3,462)	(2,007)	(1,896)	(1,058)
<b>Blade Up</b>	kg	820	820	430	430
	(lb)	(1,808)	(1,808)	(948)	(948)

\*The above loads are in compliance with hydraulic excavator lift capacity rating standard ISO 10567:2007 and they do not exceed 87% of hydraulic lifting capacity or 75% of tipping capacity. The excavator bucket weight is not included on this chart.



## Dimensions

	Standard Stick		Long Stick	
	mm	in	mm	in
<b>1</b> Dig Depth	3130	123	3430	135
<b>2</b> Vertical Wall	2420	95	2560	101
<b>3</b> Maximum Reach at Ground Level	5220	206	5470	215
<b>4</b> Maximum Reach	5350	211	5590	220
<b>5</b> Maximum Dig Height	4980	196	5070	200
<b>6</b> Maximum Dump Clearance	3590	141	3690	145
<b>7</b> Boom In Reach	2110	83	2220	87
<b>8</b> Tail Swing	975	38	975	38
<b>9</b> Maximum Blade Height	400	16	400	16
<b>10</b> Maximum Blade Depth	470	19	470	19

	Standard Stick		Long Stick	
	mm	in	mm	in
<b>11</b> Boom Height in Shipping Position	1480	58	1770	70
<b>12</b> O/A Shipping Height	2500	98	2500	98
<b>13</b> Swing Bearing Height	565	22	565	22
<b>14</b> O/A Undercarriage Length	2220	87	2220	87
<b>15</b> O/A Shipping Length	4820	190	4930	194
<b>16</b> Boom Swing Right	735	29	735	29
<b>17</b> Boom Swing Left	670	26	670	26
<b>18</b> Track Belt/Shoe Width	350	14	350	14
<b>19</b> O/A Track Width	1950	77	1950	77

# 304.5E2 XTC Mini Hydraulic Excavator with Xtra Tool Carrier

## STANDARD EQUIPMENT

### ENGINE

- Cat C2.4 diesel engine (meets U.S. EPA Tier 4 Final/EU Stage IIIA emission standards)
- Automatic engine idle
- Automatic engine shut-off
- Automatic two speed travel
- Diesel Particulate Filter (North America only)
- Diesel Oxidation Catalyst (North America only)
- Fuel and water separator
- Power on demand

### HYDRAULIC SYSTEM

- 1-way and 2-way (combined function)
- Accumulator
- Automatic swing parking brake
- Auxiliary hydraulic lines
- Auxiliary line quick disconnects
- Cat interlock system: hydraulic lockout
- Continuous auxiliary flow
- Ecology drain
- Hydraulic oil cooler
- Load sensing/flow sharing hydraulics

### OPERATOR ENVIRONMENT

- 100% pilot control ergonomic joysticks
- Adjustable armrests
- COMPASS: complete, operation, maintenance, performance and security system
  - Multiple languages
- Cup holder
- Hydraulic neutral lockout bar
- Pattern changer (optional in Europe)
- Site reference system: leveling
- Tool storage area
- Travel control pedals with hand levers

### UNDERCARRIAGE

- Dozer blade with float function
- Track, rubber belt, 350 mm (14 in) width
- Tie down eyes on track frame
- Towing eye on base frame

### FRONT LINKAGE

- 200 degree bucket rotation
- Certified lifting eye on bucket linkage (optional in Europe)
- Front shovel capable
- Thumb ready stick

### ELECTRICAL

- 12 volt electrical system
- 60 ampere alternator
- 650 CCA maintenance free battery
- Fuse box
- Ignition key start/stop switch
- Slow blow fuse
- Warning horn

### LIGHTS AND MIRRORS

- Boom light with time delay capability

### SAFETY AND SECURITY

- Anti-theft system (COMPASS)
- Caterpillar Corporate "One Key" System
- Door locks
- Lockable fuel cap
- Retractable seat belt
- Roll Over Protective Structure (ROPS) (ISO 12117-2)
- Tip Over Protective Structure (TOPS) (ISO 12117)
- Top guard – ISO 10262 (Level 1)
- Travel alarm (optional in Europe)

## OPTIONAL EQUIPMENT

### ENGINE

- Engine block heater

### HYDRAULIC SYSTEM

- Quick coupler lines
- Boom lowering check valve
- Stick lowering check valve
- Secondary auxiliary hydraulic lines

### OPERATOR ENVIRONMENT

- Cab:
  - Air conditioning
  - Heat
  - High back suspension seat
  - Interlocking front window system
  - Radio
  - Windshield wiper

### UNDERCARRIAGE

- Track, double grouser (steel), 350 mm (14 in)

### PERFORMANCE MATCHED WORK TOOLS

- Quick coupler: manual or hydraulic
- Thumb, manual or hydraulic
- Buckets
- Auger, hammer, ripper
- Skid steer loader coupler: general purpose buckets, multi-purpose buckets, forks, dozer blades, brooms, power box rakes and trenchers

### LIGHTS AND MIRRORS

- Light, cab with time delay capability
- Mirror, canopy right
- Mirror, canopy left
- Mirror, cab rear

### SAFETY AND SECURITY

- Battery disconnect
- Beacon socket
- Front wire mesh guard
- Rearview camera
- Vandal guard

### TECHNOLOGY

- Product Link™

For more complete information on Cat products, dealer services, and industry solutions, visit us on the web at [www.cat.com](http://www.cat.com)

© 2016 Caterpillar  
All rights reserved

Materials and specifications are subject to change without notice. Featured machines in photos may include additional equipment. See your Cat dealer for available options.

CAT, CATERPILLAR, SAFETY.CAT.COM, their respective logos, "Caterpillar Yellow" and the "Power Edge" trade dress, as well as corporate and product identity used herein, are trademarks of Caterpillar and may not be used without permission.

AEHQ7867 (07-2016)  
(Americas North, Europe)

