

# D6N

## Track-Type Tractor



### Engine

Engine Model	Cat® C7.1 ACERT™	
Emissions	U.S. EPA Tier 3/EU Stage IIIA equivalent and Brazil MAR-1	
Engine Power – 2,200 rpm		
SAE J1995 (Gross)	131 kW	176 hp
ISO 14396	129 kW	173 hp
Engine Power – 2,200 rpm		
ISO 9249/SAE J1349	118 kW	158 hp

### Weights

Operating Weights		
D6N XL (VPAT)	17 371 kg	38,296 lb
D6N XL (SU)	17 722 kg	39,070 lb
D6N XL WHA (VPAT)	17 036 kg	37,558 lb
D6N XL Forestry (VPAT)	16 887 kg	37,229 lb
D6N XL Forestry (SU)	16 782 kg	36,998 lb
D6N LGP (VPAT)	18 563 kg	40,924 lb

D6N Features

Versatility

*Excellent machine balance, power-to-weight-ratio and VPAT blade give you the power you need for general dozing and the control you need for fine grading. Or, choose an updated SU tractor modeled after larger Cat dozers for added breakout force and stability.*

Ease of Operation

*An updated cab provides greater visibility and comfort to help your operators work more productively. Five-speed mode and bidirectional control help reduce operator effort and increase efficiency.*

Performance

*A Cat C7.1 ACERT engine gives you the horsepower you need to doze through tough conditions. New, more robust engine fuel system features high efficiency fuel filters and water-in-fuel sensors for greater fuel system reliability.*

Cat Connect Technologies

*GRADE for Dozers technologies like Cat GRADE with Slope Assist™ and Cat AccuGrade™ help you get jobs done faster and more accurately.*

Contents

Operator Environment.....4

Power and Performance.....5

Equipped for the Job .....6

Cat Connect Technologies.....8

Serviceability and Customer Support.....10

Special Arrangements .....12

Specifications.....13

Standard Equipment.....17

Optional Equipment.....18

Mandatory Attachments.....18





**The new D6N gives you power, balance and versatility – all in one easy-to-transport machine. This rugged bulldozer features a quiet new cab with added visibility and comfort. And to boost your grading productivity, choose scalable GRADE technology features that help you get more quality work done in less time.**

# Operator Environment

## Comfort and productivity

Updated cab, with an Integrated Roll Over Protection Structure (ROPS) and 15° offset seat, gives operators greater all around visibility to enhance safety and productivity. Quiet interior, with improved pressurization, helps keep dust out. Cab access/egress is easier too. Standard air suspension seat is fully adjustable with retractable seat belt for enhanced safety.

New color Liquid Crystal Display (LCD) is glare resistant and easy to read day or night.

- Monitor machine operation.
- Access machine/implement settings menus.
- View machine diagnostics.
- Slope Assist control screen.
- Displays real-time machine slope and mainfall.



### Implement and Steering Controls

- Electro-hydraulic controls on VPAT dozer reduce operator effort, improve precision and response, and enable Cat Connect GRADE technologies.
- Single handle control for all directional changes and gear selection. Change gears up or down with the touch of a button.
- Rotary dial controls engine throttle speed.
- Auto Shift allows machine to automatically down shift to the most efficient gear based on load to save fuel and increase productivity.
- Bi-directional control allows the operator to dial to preselect forward/reverse gears for reduced operator effort and improved efficiency.
- Implement Lock-Out prevents inadvertent operation of hydraulic attachments.



# Power and Performance

Designed to get the job done



## Engine

Cat C7.1 ACERT engine optimizes power and fuel efficiency while reducing emissions. Biodiesel compatible up to B20.

## Planetary Power Shift Transmission

Smoother shifting, electronically controlled transmission features three speeds forward/three speeds reverse. Auto Shift enables two additional ground speeds for five working speeds forward and four working speeds reverse. Modular components offer easy service access.

## Differential Steering

Differential Steering increases the speed of one track while slowing the other for exceptional turning, even with a full blade load. This provides greater maneuverability and faster cycle times. You also get better load capacity, power and speed control in soft underfoot conditions.

## Responsive Hydraulics

Dedicated implement and steering pumps mean you can count on simultaneous blade response and steering performance. This gives you precision and maneuverability, especially beneficial for working in close quarters or land clearing. Field-proven system senses load and continuously adjusts implement hydraulic power for maximum efficiency.

## Cooling System

Updated aluminum bar plate cooling system is more efficient than the previous model and gives you better cooling capability in high ambient conditions.



# Equipped for the Job

Tough from the inside out



## Undercarriage

The elevated sprocket design helps protect major components from harsh impacts and provides a modular design for convenient service. The operator has excellent sight lines and the center of gravity remains low, for outstanding stability, balance and traction. Choose an XL dozer for general duty, or a Low Ground Pressure (LGP) configuration if the majority of your work is in loose, wet or sensitive underfoot conditions.

Heavy Duty undercarriage, with lifetime lubricated track/carrier rollers and idlers, is standard. The components are designed for extended wear life in abrasive or high impact conditions like forestry, side slopes or working in rocky terrain.

You can also choose SystemOne™ undercarriage, designed to work and wear as a system for longer life and lower costs in abrasive or low/moderate impact applications. A broad choice of track shoe designs and widths help you further optimize your machine for performance and longer life.

## Structures

The foundation of every Cat dozer is a rugged mainframe built to absorb high impact shock loads and twisting forces. Castings add strength to the main case and equalizer bar saddle. A modular design allows easy installation and removal of major components for service/rebuild.





### **Variable Power Angle Tilt (VPAT) Blade**

Variable Power Angle Tilt (VPAT) blade allows you to hydraulically adjust lift, angle and tilt for more precise results. Excellent machine balance, power-to-weight-ratio and VPAT blade offer maximum versatility, with the power you need for general dozing and the control you need for fine grading. VPAT blade can be angled for easier transport. A folding VPAT blade is also available.

### **Bulldozers**

An updated SU configuration for the D6N is modeled after larger Cat dozers for added breakout force and stability in dozing applications. L-shaped push arms give you an advantage over diagonal brace designs by bringing the blade closer to the machine for better balance, maneuverability and blade penetration.

Dozer blades are manufactured from high tensile strength steel, with a robust multi-cell design to stand up to the most severe applications. The moldboard is highly abrasion resistant to prevent wear-through. Hardened bolt-on cutting edges and end bits give you better penetration and can be rotated and/or replaced for even longer blade life.

### **Rear Implements**

- Three-shank fixed parallelogram-type ripper with curved or straight ripper shanks.
- Drawbar for towing and recovery.
- Winch.

Please consult your Cat dealer for available options to best suit the types of work you do.



# Cat Connect Technologies

Monitor, manage, enhance job site operations



## GRADE for Dozers

Cat Connect GRADE technologies help you hit target grade faster and more accurately. Finish jobs in fewer passes, and with less operator effort, saving you time and helping you increase profit.

**Cat GRADE with Slope Assist (■\*)** helps operators by automatically maintaining pre-established blade position. The system saves time, increases finish quality and reduces operator input. Experienced operators can work more productively and less experienced operators can achieve better quality results more quickly.

**Cat Slope Indicate (■)** displays machine cross-slope and fore/aft orientation on the primary monitor, helping operators work more accurately on slopes.

**Cat Stable Blade (■)** complements the operator's blade-control input for attaining finish grades quicker with less effort.

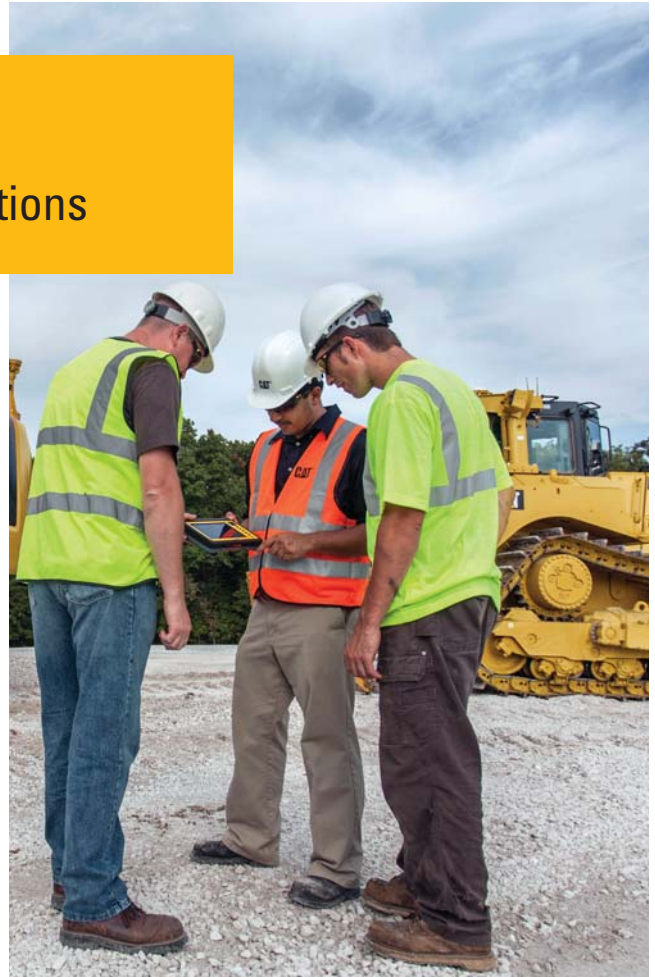
**Cat AccuGrade (●)** is a dealer-installed aftermarket grade-control system that provides increased grading versatility and the ability to scale capacity to changing needs, providing a choice of lasers for 2D flat plane and slope work, Global Navigation Satellite System (GNSS) control for complex 3D cuts and contours, and/or systems using a Universal Total Station (UTS) for fine and finish grading.

**AccuGrade Ready Option (ARO) (●)** allows you to easily install or upgrade to AccuGrade 2D and 3D grade-control systems to add versatility and resale value to your machine.

(■) = Standard

(●) = Optional

\*Available for VPAT machines only.





### LINK Technologies

LINK technologies provide wireless capability to machines enabling two-way transfer of information collected by on-board sensors, control modules, and other Cat Connect technologies using off-board apps, such as our VisionLink® software.

### Product Link™/VisionLink

Product Link takes the guesswork out of equipment management. Track location, hours, fuel usage, productivity, idle time, and diagnostic codes through the online VisionLink interface. Manage your fleet in real time so you can maximize efficiency, improve productivity, and lower operating costs.

Cat Connect makes smart use of technology and services to improve your job site efficiency. Using the data from technology equipped machines, you'll get more information and insight into your equipment and operations than ever before. Cat Connect services are also available from your dealership including:



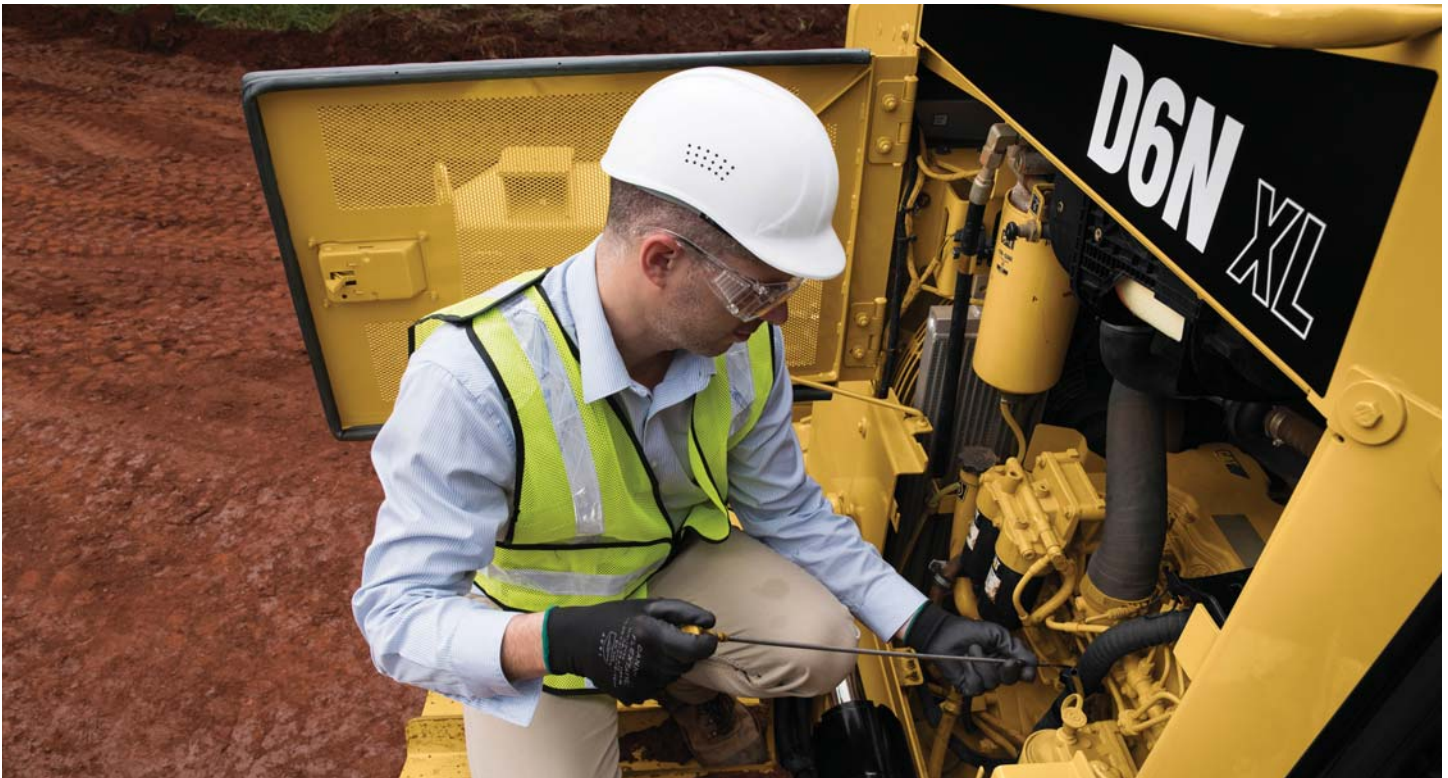
**Equipment Management** – increase uptime and reduce operating costs.



**Productivity** – monitor production and manage job site efficiency.



**Safety** – enhance job site awareness to keep your people and equipment safe.



## Serviceability and Customer Support

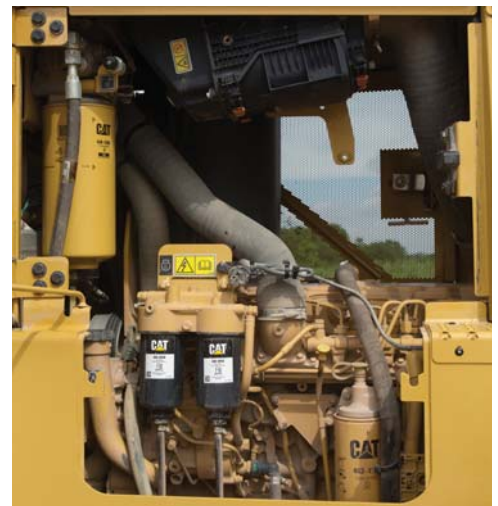
When uptime counts

### Ease of Service

The D6N is designed for ease of repair and maintenance so you can spend less time on service and more time on the job.

Service points are grouped and sight gauges let you inspect fluid levels at a glance. Service point locations are consistent across Cat tractor models to help save you even more time. High efficiency fuel filters have water-in-fuel sensors to add to fuel system robustness.

Air conditioning condenser is now mounted externally, above the rear cab window, without adding to machine height. Heating/ventilation/air conditioning capability is increased, while improving engine cooling and serviceability.



## Cat EMServices (Equipment Management Services)

Cat **EM**Services lets you take control of your fleet with a solution specific to your equipment management needs. Comprehensive equipment management – combined with the knowledge and expertise of your Cat dealer – can provide ways to help you achieve gains that go straight to your bottom line.

- Improve availability
- Reduce owning and operating costs
- Streamline maintenance practices
- Maximize equipment life
- Increase resale value

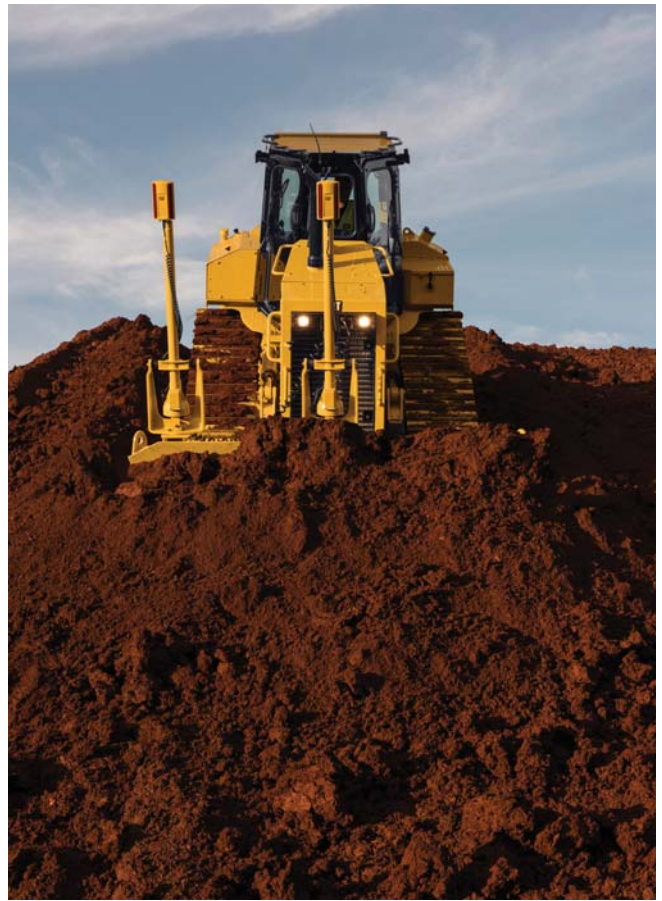
Consisting of five levels of support, from remote access to equipment data to complete, proactive management of your fleet, Cat **EM**Services allows you to choose the amount of support that's right for you.

## Renowned Cat Dealer Support

Knowledgeable Cat dealers have a global reputation for providing outstanding sales and service. When you need repairs, Cat dealers and our unmatched Caterpillar distribution network excel at getting you the right parts you need quickly. Maximize your equipment investment with a Customer Support Agreement tailored to meet your business needs. Take advantage of preventive maintenance programs like Custom Track Service, Scheduled Oil Sampling (S-O-S<sup>SM</sup>) analysis, and guaranteed maintenance contracts. Cat dealers can even help you with operator training to help boost your profits.

Your Cat dealer can also help you maximize your equipment investment with services like Cat Reman\* parts and Cat Certified Rebuilds. Remanufactured parts offer you the same warranty and reliability as new parts at a fraction of the cost. A Certified Rebuild gives a “second life” for your machine, incorporating the latest engineering updates so you end up with a like-new dozer and a new machine warranty. Caterpillar strives to provide customers the lowest owning and operating costs over the life of their machine.

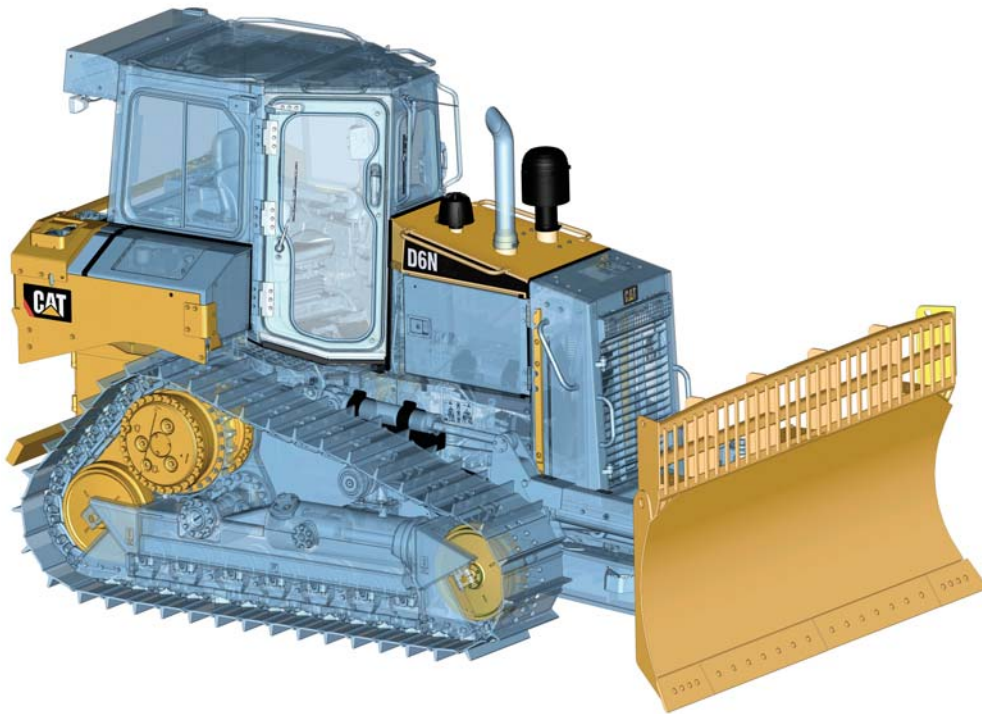
*\*Please contact your Cat dealer for Reman availability.*



# Special Arrangements

## Purpose-built for performance

Your D6N can be specially equipped from the factory to perform in the toughest applications.



### Waste Handler/ Landfill Arrangement

- Specialized guarding, striker bars and seals help protect the machine from impact and airborne/wrapping debris.
- The engine cooling system is designed for high debris environments and easy access for cleanout.
- Specialized air handling features help deliver cleaner air to the machine.
- Landfill blades and center-hole track shoes help you optimize your waste handler for the job.

### Forestry Arrangement

- Optional sweeps help protect the cab, top and sides of the machine.
- Optional screens give added impact protection to all cab windows and open canopy (ISO 8084).
- Additional guarding helps protect machine structures from heavy debris impact.
- The cooling system is designed for high debris environments, with easy access for cleanout.



# D6N Track-Type Tractor Specifications

## Engine

Engine Model	Cat C7.1 ACERT	
Emissions	Tier 3/Stage IIIA equivalent and Brazil MAR-1	
Engine Power – 2,200 rpm		
SAE J1995 (Gross)	131 kW	176 hp
ISO 14396	129 kW	173 hp
Engine Power – 2,200 rpm		
ISO 9249/SAE J1349	118 kW	158 hp
Bore	105 mm	4.1 in
Stroke	135 mm	5.3 in
Displacement	7.1 L	433.3 in <sup>3</sup>

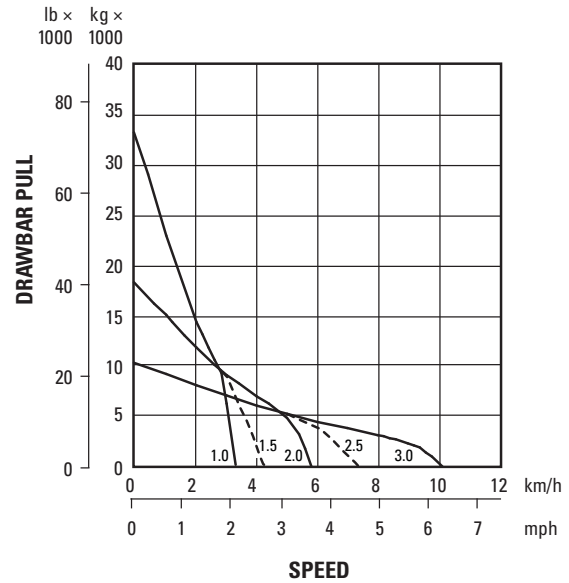
- Net power advertised is the power available at the flywheel when engine is equipped with a fan at maximum speed, air cleaner, muffler and alternator.
- No deratings required up to 3000 m (9,840 ft) altitude. Automatic derating occurs after 3000 m (9,840 ft).

## Transmission

1.0 Forward	3.3 km/h	2.0 mph
1.5 Forward*	4.2 km/h	2.6 mph
2.0 Forward	5.8 km/h	3.6 mph
2.5 Forward*	7.3 km/h	4.5 mph
3.0 Forward	10.1 km/h	6.2 mph
1.0 Reverse	4.2 km/h	2.6 mph
1.5 Reverse*	5.2 km/h	3.2 mph
2.0 Reverse	7.3 km/h	4.5 mph
2.5 Reverse*	7.3 km/h	4.5 mph
3.0 Reverse	12.5 km/h	7.7 mph

\*With Auto-Shift Mode selected.

## Drawbar – D6N XL and LGP



### KEY

- 1.0 – 1st Gear
- 1.5 – 1st Gear, additional speed with Auto Shift engaged
- 2.0 – 2nd Gear
- 2.5 – 2nd Gear, additional speed with Auto Shift engaged
- 3.0 – 3rd Gear

**NOTE:** Usable pull will depend upon weight and traction of equipped tractor.

## Service Refill Capacities

Fuel Tank	299 L	79.0 gal
Cooling System	30 L	12.7 gal
Engine Crankcase	15.5 L	4.1 gal
Power Train	160 L	44.9 gal
Final Drives (each)	7 L	2.2 gal
Hydraulic Tank	29.5 L	7.8 gal

# D6N Track-Type Tractor Specifications

## Weights

### Operating Weights

D6N XL (VPAT) <sup>(1)</sup>	17 371 kg	38,296 lb
D6N XL (SU) <sup>(1)</sup>	17 722 kg	39,070 lb
D6N XL WHA (VPAT) <sup>(2)</sup>	17 036 kg	37,558 lb
D6N XL Forestry (VPAT) <sup>(3)</sup>	16 887 kg	37,229 lb
D6N XL Forestry (SU) <sup>(3)</sup>	16 782 kg	36,998 lb
D6N LGP (VPAT) <sup>(4)</sup>	18 563 kg	40,924 lb

### Shipping Weights

D6N XL (VPAT) <sup>(5)</sup>	16 053 kg	35,390 lb
D6N XL (SU) <sup>(5)</sup>	15 785 kg	34,800 lb
D6N LGP (VPAT) <sup>(6)</sup>	17 058 kg	37,606 lb

<sup>(1)</sup>Operating weight includes lubricants, coolant, full fuel tank, standard track, ROPS cab, air conditioner, hydraulic controls, blade, ripper and operator.

<sup>(2)</sup>WHA (VPAT) operating weight includes lubricant, coolant, full fuel tank, standard track, ROPS cab, air conditioner, hydraulic controls, VPAT landfill blade, rear striker box, guarded final drive, heavy duty fuel and hydraulic tank guard, line guard, heavy duty and sealed bottom guard, precleaner and operator.

<sup>(3)</sup>Forestry (VPAT) operating weight includes lubricant, coolant, full fuel tank, standard track, ROPS cab, air conditioner, hydraulic controls, VPAT blade, drawbar, heavy duty fuel and hydraulic tank guard, hydraulic lines guard, rear guard, heavy duty and sealed bottom guard, heavy duty grill, sweeps, screen and operator.

<sup>(4)</sup>LGP VPAT operating weight includes lubricants, coolant, full fuel tank, standard track, ROPS cab, air conditioner, hydraulic controls, blade, drawbar and operator.

<sup>(5)</sup>Shipping weight includes lubricants, coolant, 5% fuel tank, standard track, ROPS cab, ripper, air conditioner, hydraulic controls and blade removed. (Includes inside mounted C-Frame for VPAT-Blade).

<sup>(6)</sup>LGP shipping weight includes lubricants, coolant, 5% fuel tank, standard track, ROPS cab, drawbar, air conditioner, hydraulic controls and blade removed. (Includes C-Frame for VPAT-Blade).

## Undercarriage – XL

Shoe Type	Extreme Service	
Width of Shoe	560 mm	22.0 in
Grouser Height	57 mm	2.2 in
Shoes per Side	40	
Track Rollers per Side	7	
Track Pitch	190 mm	7.5 in
Ground Clearance	364 mm	14.3 in
Track Gauge	1890 mm	74.4 in
Length of Track on Ground	2587 mm	101.8 in
Ground Contact Area	2.9 m <sup>2</sup>	4,496 in <sup>2</sup>
Ground Pressure (ISO 16754)		
VPAT-Blade	58.7 kPa	8.5 psi
SU-Blade	59.9 kPa	8.6 psi

## Undercarriage – LGP

Shoe Type	Moderate Service	
Width of Shoe	840 mm	33.1 in
Grouser Height	66 mm	2.6 in
Shoes per Side	46	
Track Rollers per Side	8	
Track Pitch	190 mm	7.5 in
Ground Clearance	444 mm	17.5 in
Track Gauge	2160 mm	85.0 in
Length of Track on Ground	3113 mm	122.6 in
Ground Contact Area	5.23 m <sup>2</sup>	8,107 in <sup>2</sup>
Ground Pressure (ISO 16754)		
VPAT-Blade	34.8 kPa	5.0 psi

## Blades

SU XL – Capacity	4.28 m <sup>3</sup>	5.6 yd <sup>3</sup>
SU XL – Width	3154 mm	124.2 in
VPAT XL – Capacity	3.31 m <sup>3</sup>	4.3 yd <sup>3</sup>
VPAT XL – Width	3272 mm	128.8 in
VPAT XL WH – Capacity	6.4 m <sup>3</sup>	4.3 yd <sup>3</sup>
VPAT XL WH – Width	3272 mm	128.8 in
VPAT LGP – Capacity	3.87 m <sup>3</sup>	5.1 yd <sup>3</sup>
VPAT LGP – Width	4082 mm	160.7 in

- Blade capacities are measured to SAE J/ISO 9246.
- Blade widths are measured over end bits.

# D6N Track-Type Tractor Specifications

## Rippers

Type	Fixed Parallelogram	
Number of Pockets	3 – Multiple Shank, XL	
Overall Beam Width	2202 mm	86.7 in
Weight with Standard Shanks	1400 kg	3,444 lb
Maximum Penetration	475 mm	14.0 in
Maximum Penetration Force	52 kN	11,600 lbf
Pry-out Force	125.8 kN	28,280 lbf

## Hydraulic Controls

Pump Type – Implements	Variable Displacement Piston	
Pump Capacity at 2,200 rpm Rated Speed	6900 kPa	1,001 psi
Pump Output	135 L/min	35.7 gal/min
Pump Type – Steering	Variable Displacement Piston	
Pump Capacity at 2,200 rpm Rated Speed	42 000 kPa	6,092 psi
Pump Output	118 L/min	31.2 gal/min
Bulldozer Lift Cylinder Flow	132 L/min	34.9 gal/min
Bulldozer Tilt Cylinder Flow	100 L/min	26.4 gal/min
Ripper Cylinder Flow	125 L/min	33.0 gal/min
Maximum Operating Pressures		
Bulldozer Lift Cylinder	26 500 kPa	3,843 psi
Bulldozer Tilt Cylinder	23 500 kPa	3,408 psi
Ripper Lift Cylinder	35 000 kPa	5,076 psi
Steering	45 000 kPa	6,527 psi
Main Relief Valve		
Pressure Setting (Non-VPAT)	21 800 kPa	3,162 psi
Pressure Setting (VPAT)	23 400 kPa	3,394 psi

## Standards

ROPS/FOPS	ROPS (Rollover Protective Structure) offered by Caterpillar meets ROPS criteria ISO 3471:2008 FOPS (Falling Object Protective Structure) meets FOPS criteria ISO 3449:2005 Level II
Brakes	Brakes meet the standard ISO 10265:2008
Cab	Meets appropriate standards as listed below

## SOUND SUPPRESSED

- The operator sound exposure Leq (equivalent sound pressure level) measured according to the work cycle procedures specified in “SAE J1166 FEB2008” is 81 dB(A), for a cab by Caterpillar, when properly installed and maintained and tested with the doors and windows closed.
- Hearing protection may be needed when operating with an open operator station and cab (when not properly maintained or doors/windows open) for extended periods or in noisy environment(s).
- The declared exterior sound power level is 110 dB(A) when the value is measured according to the dynamic test procedures and the conditions that are specified in “ISO 6395:2008.”

## STANDARD

- The operator sound exposure Leq (equivalent sound pressure level) measured according to the work cycle procedures specified in “SAE J1166 FEB2008” is 82 dB(A), for a cab by Caterpillar, when properly installed and maintained and tested with the doors and windows closed.
- Hearing protection may be needed when operating with an open operator station and cab (when not properly maintained or doors/windows open) for extended periods or in noisy environment(s).
- The declared exterior sound power level is 113 dB(A) when the value is measured according to the dynamic test procedures and the conditions that are specified in “ISO 6395:2008.”

## Bulldozers

Blade	SU XL		VPAT XL		VPAT LGP		VPAT XL WH	
Capacity	4.28 m <sup>3</sup>	5.6 yd <sup>3</sup>	3.31 m <sup>3</sup>	4.3 yd <sup>3</sup>	3.87 m <sup>3</sup>	5.1 yd <sup>3</sup>	6.4 m <sup>3</sup>	8.37 yd <sup>3</sup>
Width	3154 mm	124.2 in	3272 mm	128.8 in	4082 mm	160.7 in	3272 mm	128.8 in
Height	1238 mm	48.7 in	1195 mm	47.0 in	1256 mm	49.4 in	1702 mm	67.0 in
Digging Depth	473 mm	18.6 in	485 mm	19.1 in	555 mm	21.9 in	485 mm	19.1 in
Ground Clearance	1076 mm	42.4 in	1002 mm	39.4 in	995 mm	39.2 in	1002 mm	39.4 in
Maximum Tilt	665 mm	26.2 in	483 mm	19.0 in	590 mm	23.2 in	483 mm	19.0 in
Weight <sup>(1)</sup>	1957 kg	4,349 lb	2426 kg	5,391 lb	2852 kg	6,338 lb	2575 kg	5,722 lb

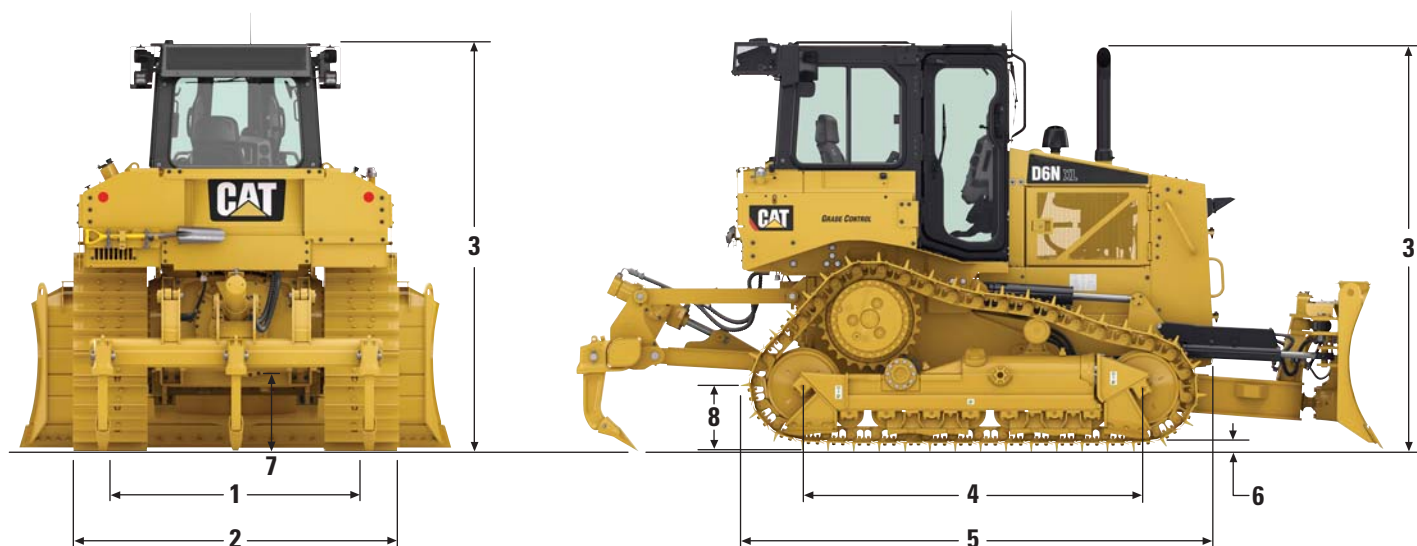
<sup>(1)</sup> Does not include hydraulic controls but includes Push-Arm/C-Frame, Trunnions, Blade Tilt Cylinder/Brace (SU XL), and Angle/Tilt Cylinders (VPAT).

\*Digging Depth, Ground Clearance are measured from track ground show, does not include height of track grouser tip.

# D6N Track-Type Tractor Specifications

## Dimensions

All dimensions are approximate.



	XL		LGP	
<b>1</b> Tractor Gauge	1890 mm	74.4 in	2160 mm	85.0 in
<b>2</b> Width of Tractor				
Over Trunnions	2640 mm	103.9 in	N/A	
Without Trunnions (standard shoe width)	2450 mm	96.5 in	3000 mm	118.1 in
Standard Shoes with VPAT Blade Fully Angled	2972 mm	117.0 in	3706 mm	145.9 in
<b>3</b> Machine Height, from Tip of Grouser				
Exhaust Stack	3042 mm	119.8 in	3122 mm	122.9 in
ROPS	3055 mm	119.7 in	3135 mm	123.8 in
<b>4</b> Length of Track on Ground	2587 mm	101.9 in	3092 mm	121.7 in
<b>5</b> Length of Basic Tractor:				
Cab (non-VPAT)	3766 mm	148.3 in	N/A	
Cab (VPAT)	3696 mm	145.5 in	4027 mm	158.5 in
With following attachments, add:				
SU – Blade	1170 mm	46.1 in	N/A	
VPAT – Blade (straight)	1195 mm	47.0 in	1250 mm	49.2 in
VPAT – Blade (angled 25 degrees)	1815 mm	71.5 in	2060 mm	81.1 in
Rear Drawbar	184 mm	7.2 in	100 mm	3.9 in
Multi-Shank Ripper (tip at ground level)	1230 mm	48.4 in	1140 mm	44.9 in
<b>6</b> Grouser Bar Height	57 mm	2.2 in	66 mm	2.6 in
<b>7</b> Ground Clearance	364 mm	14.3 in	444 mm	17.5 in
<b>8</b> Drawbar Height (grouser tip to center of clevis)	614 mm	24.2 in	703 mm	27.7 in

## Standard Equipment

Standard equipment may vary. Consult your Cat dealer for details.

### POWER TRAIN

- Cat C7.1 ACERT diesel engine – meets Tier 3/Stage IIIA equivalent and Brazil MAR-1 emission standards
- 3000 m (9,840 ft) altitude operation capability without derating
- ADEM A4 electronic control module
- A5 electronic control module
- Air cleaner, precleaner with dust ejector or precleaner under hood air intake system
- Air filter with electronic service indicator
- Aluminum bar-plate cooling system (radiator, power train oil cooler, ATAAC, hydraulic oil cooler)
- Coolant, extended life
- Direct drive radiator fan (blower type)
- Differential steering, electronically controlled
- Electrical fuel priming pump
- Primary fuel filter and twin secondary fuel filters
- Transmission, electronically controlled powershift 3F/3R speeds
- Torque converter
- Parking brake, electronic
- Final drives, 3-planet single reduction planetary
- Muffler with mitered stack
- Turbocharger, waste-gate
- Water separator with water-in-fuel sensor indicator
- Ecology drains
- Optional 5F/5R, bi-directional gear selection, auto-kickdown

### UNDERCARRIAGE

- Undercarriage, sealed and lubricated heavy duty (XL/LGP) or SystemOne undercarriage
  - XL – 40 section
  - LGP – 46 section
- Carrier rollers, two (2), sealed and lubricated heavy duty (XL/LGP)
- Lifetime lubricated track rollers (seven [7] XL and eight [8] LGP) and idlers
- Track shoes, single grouser, moderate service (moderate service or extreme service)
  - XL – 560/600 mm (22/24 in)
  - LGP – 840/865 mm (33/34 in)
- Replaceable sprocket rim segments

### HYDRAULICS

- Pilot-hydraulic controlled implement hydraulic system for SU/VPAT
- Electro-hydraulic controlled implement hydraulic system with stable blade feature, three (3) valves or four (4) valves for VPAT
- Load sensing implement hydraulic system
- Lift cylinder (2): SU common arrangement
- Lift cylinder (2), angle cylinder (2) and tilt cylinder (1): VPAT-Blade common arrangements

### ELECTRICAL

- Alarm, back-up
- Horn, forward warning
- Glow plug starting aid
- Starter motor, 24V
- Batteries, two (2) maintenance free 12V (24V system)
- 12V converter, 10 amp with one (1) outlet
- Diagnostic connector
- 95 amp brushless alternator (24V)

### OPERATOR ENVIRONMENT

- Integrated ROPS/FOPS enclosed cab structure
- Integral cooling/heating system, external mounted condenser
- Armrest, adjustable
- Seat, suspended, 15° orientated
- Seatbelt, retractable, 76 mm (3 in) (included in seat)
- Seat belt indication on display
- Cup holder
- Coat hook
- Two power receptacle, 12V
- Decelerator pedal, suspended
- Service brake, suspended
- Differential steering control with single twist tiller and soft touch speed button selection
- Foot rests for slope work
- Throttle switch, electronic rotary switch

- Display
  - Engine coolant temperature
  - Torque converter oil temperature
  - Hydraulic oil temperature
  - Fuel level
  - Engine RPM/speed gauge with gear selection LCD display
- Display – warning lamps
  - Engine air cleaner service indicator
  - Water-in-fuel sensor service indicator
  - Low fuel level indicator
  - Action indicator
  - Battery charging indicator
  - Transmission oil filter service indicator
  - Hydraulic oil filter service indicator
  - Engine oil pressure low indicator
  - Belt indication with G7P/CIC3 display

### TECHNOLOGY PRODUCTS

- Cat GRADE with Slope Assist
- Product Link, GSM or satellite

### OTHER MANDATORY EQUIPMENT

- Engine side enclosures (perforated and lockable)
- Engine hood, solid
- Guards, bottom, basic or heavy duty
- Radiator grill, louvered, hinged, basic or heavy duty
- Front pull device
- Vandalism protection – padlocks for battery compartment and fuel drain
- Sampling ports
  - Engine oil (included in engine)
  - Hydraulic oil (included in hydraulic arrangement)
  - Engine coolant (included in engine)

### INSTRUCTIONS

- Parts book
- Operation and Maintenance Manual

# D6N Optional Equipment

## Optional Equipment

Optional equipment may vary. Consult your Cat dealer for details.

- D6N XL tractor, SU
- D6N XL tractor, VPAT
- D6N LGP tractor, VPAT
- Sweeps with top-screen, cab
- Screens, rear/doors/side, cab
- Sand blast grid
- Ether starting aid
- Heater, engine coolant
- Guard, rear, transmission
- Tooth – ripper, straight or curved
- Rearview mirror
- Seals and additional guards for high debris and WHA
- Oil change system, high speed
- Selectable factory installed ARO for electro-hydraulic control machines

## D6N Mandatory Attachments

### Mandatory Attachments

Select one from each group. Mandatory and optional equipment may vary. Consult your Cat dealer for specifics.

#### TECHNOLOGY PRODUCTS

- No Product Link
- Product Link, satellite, PL631
- Product Link, dual, PLE641 + PL631

#### HYDRAULICS

- Two (2) valve, pilot, SU
- Three (3) valve, pilot, SU
- Three (3) valve, pilot, VPAT
- Four (4) valve, pilot, VPAT
- Three (3) valve, E/H, VPAT, XL
- Four (4) valve, E/H, VPAT, XL
- Three (3) valve, E/H, VPAT, LGP
- Four (4) valve, E/H, VPAT, LGP

#### ELECTRICAL

- Battery
  - Battery, basic
  - Battery, heavy duty

#### LIGHTING

- SU or VPAT
  - Lights, four (4)
  - Lights, six (6)
  - Lights, six (6), LED
  - Lights, eight (8), sweeps

#### POWER TRAIN

- Fan
  - Fan, basic
  - Fan, ejector
- Fan pulley
  - Fan pulley, basic
  - Fan pulley, waste handling arrangement
- Precleaner
  - Precleaner, basic
  - Precleaner, turbine
- Final drive
  - Final drive, XL or LGP
  - Final drive, XL or LGP, with seal guards

#### GUARDS

- Engine enclosure, basic
- Engine enclosure, perforated
- Guards, bottom
  - Guard, bottom
  - Guard, bottom, heavy duty, sealed
  - Guard, bottom, VPAT
  - Guard, bottom, heavy duty, sealed

#### GRILL, RADIATOR

- Grill, radiator, SU or VPAT
- Grill, radiator, heavy duty, SU or VPAT

#### OPERATOR ENVIRONMENT

- Seat
  - Seat, cloth – air suspension seat, seat belt indication
  - Seat, deluxe – air suspension seat, heated and ventilated, seat belt indication

#### LUBRICANT

- Lubricant
- Lubricant, high ambient

#### UNDERCARRIAGE

- Heavy duty, XL, no guide
- Heavy duty, XL, center guide
- Heavy duty, XL, waste, no guide
- Heavy duty, XL, moderate service, front/rear guides
- Heavy duty, XL, extreme service full guides
- SystemOne, XL, front/rear guides
- SystemOne, XL, full guides
- Heavy duty, LGP, center guide
- Heavy duty, LGP, waste, center guide
- Heavy duty, LGP, extreme service full guides
- SystemOne, LGP, front/rear guides
- SystemOne, LGP, full guides

(continued on next page)

## Mandatory Attachments *(continued)*

Select one from each group. Mandatory and optional equipment may vary. Consult your Cat dealer for specifics.

### TRACK PAIRS

- XL – 40 section
  - 560 mm (22 in), moderate service, heavy duty
  - 560 mm (22 in), extreme service, heavy duty
  - 600 mm (24 in), moderate service, heavy duty
  - 600 mm (24 in), extreme service, heavy duty
  - 600 mm (24 in), extreme service, center hole, heavy duty
  - 610 mm (24 in), extreme service, SystemOne
- LGP – 46 section
  - 840 mm (33 in), extreme service, heavy duty
  - 840 mm (33 in), extreme service, center hole, heavy duty
  - 840 mm (33 in), self cleaning, heavy duty
  - 840 mm (33 in), extreme service, SystemOne

### REAR IMPLEMENTS

- No rear attachment
- Ripper, multi-shank
- Drawbar, rigid
- Striker bar, rear

### OPTIONAL ATTACHMENTS

- Power train
  - Starting aid, ether
  - Heater, engine coolant
- Guards
  - Guards – structures
    - Sweeps, SU or VPAT
    - Guard, rear, transmission
    - Guard group, XL or LGP, heavy duty, VPAT
    - Radiator core protection, sandblast
  - Guard – fuel tank
    - Guard, fuel tank
    - Guard, fuel tank, heavy duty
  - Guards – operator station
    - Screens, door
    - Screens, side
    - Screen, rear

### BULLDOZER

- Bulldozer packages
  - SU XL
  - SU XL, guarded
- Blades
  - SU XL
  - SU XL, landfill
  - VPAT ARO XL
  - VPAT XL, landfill
  - VPAT ARO LGP
  - VPAT LGP, foldable
  - VPAT LGP, landfill
- Ripper shanks
  - Shanks, straight, multi-shank
  - Shanks, curved, multi-shank
- Specific application features
  - Slope Assist package
  - ARO and Slope Assist package
  - Sound suppression
  - Mirror group – rear
  - Forestry protection package, XL SU or XL VPAT
  - Disposal arrangement, SU or VPAT
  - Oil change, high speed, SU or VPAT
  - Kit – shovel holder mounting group



For more complete information on Cat products, dealer services, and industry solutions, visit us on the web at [www.cat.com](http://www.cat.com)

© 2017 Caterpillar  
All rights reserved

Materials and specifications are subject to change without notice. Featured machines in photos may include additional equipment. See your Cat dealer for available options.

CAT, CATERPILLAR, SAFETY.CAT.COM, their respective logos, "Caterpillar Yellow" and the "Power Edge" trade dress, as well as corporate and product identity used herein, are trademarks of Caterpillar and may not be used without permission.

VisionLink is a trademark of Trimble Navigation Limited, registered in the United States and in other countries.

AEHQ8000-01 (06-2017)  
Replaces AEHQ8000  
(LACD)

