



# Cat<sup>®</sup> TH514D

## TELEHANDLER

### FEATURES:

- **Simple Maintenance** – Due to the engine layout parallel to the machine frame, Cat<sup>®</sup> Telehandlers feature class leading access to the engine, filters and service fluids, making servicing easier and quick from ground level. Our excellent dealer and parts network ensures rapid availability around the clock.
- **Handle Tough Terrain** – High ground clearance and limited slip differential locks ensure that the TH514D can handle even the most difficult environments. Dual axle braking also provides the security you need when traveling around the job site and our long wheelbase ensures load stability on uneven ground.
- **Powerful Hydraulics** – A variable flow axial pump matched to a high performance flow sharing valve allows smooth multi-function boom performance. The load sensing system means excellent fuel economy, as the pump only works when required.
- **Cab** – A well laid out cab with a multi-function joystick gives the operator a comfortable working environment. The unique “Operator Preferences” feature allows the machine to be tuned to suit individual operators. Options include an air suspension seat, large display screen with pre-loaded load charts, rearview camera, reversing sensors and air conditioning.

## Specifications

### Engine

Model*	Cat C3.4B	
Gross power	75 kW	100 hp/bhp
Max torque	420 N-m	310 lbf-ft
Bore	99 mm	3.8 in
Stroke	110 mm	4.3 in
Displacement	3.4 L	207 in <sup>3</sup>

\*Meets U.S. EPA Tier 4 Final emission standards.

### Weights

Operating Weight with Carriage and Forks*	11 889 kg	26,211 lb
---	-----------	-----------

\*Represents machine configuration of 75 kW (100 hp/bhp) engine on standard 15.5/80-24 16 ply tires.

### Operating Specifications

Rated Load Capacity	4990 kg	11,000 lb
Maximum Lift Height	13.88 m	45.6 ft
Capacity at Maximum Lift Height	1996 kg	4,400 lb
Capacity at Maximum Lift Height (stabilizers down)	3175 kg	7,000 lb
Maximum Forward Reach	10.0 m	32.1 ft
Capacity at Maximum Forward Reach	272 kg	600 lb
Capacity at Maximum Forward Reach (stabilizers down)	1701 kg	3,750 lb
Outside Turning Radius over Tires	3.9 m	12.9 ft

### Service Refill Capacities

Fuel Tank	148 L	40 gal
Diesel Exhaust Fluid	20.3 L	5.4 gal
Hydraulic Tank	160 L	42 gal

### Brakes

Service Brakes	Boost assisted oil immersed multi disc on both axles
Parking Brake	Spring actuated hydraulic release park brake on front axle

### Transmission

Type	Four (4) speed power shift	
Forward		
1	5.5 km/h	3.4 mph
2	10.6 km/h	6.5 mph
3	25.2 km/h	15.6 mph
4	30.9 km/h	19.2 mph
Reverse		
1	5.5 km/h	3.4 mph
2	10.6 km/h	6.5 mph
3	25.2 km/h	15.6 mph

### Electrical

Battery	1 × 12V 1,000 CCA Battery
Alternator Output	12V/120A



# TH514D Telehandler

## Hydraulic System

System Type	Load Sensing, Closed Center	
Pump Type	Variable Flow, Axial Piston	
Maximum Pump Capacity	150.8 L/min	39.8 gal/min
System Pressure	260 bar	3,770 psi
Auxiliary Hydraulic Pressure	240 bar	3,481 psi
Auxiliary Hydraulic Flow		
Boom Head – Intermittent	95 L/min	25 gal/min
Boom Head – Continuous	95 L/min	25 gal/min

## Boom Performance

Boom Up	13.2 sec
Boom Down	11.8 sec
Tele Out	16.6 sec
Tele In	12.8 sec
Crowd Forward (Dump)	4 sec
Crowd Backward	3.9 sec
Combined	
Up and Out	29.8 sec
Down and In	24.6 sec

## Axles

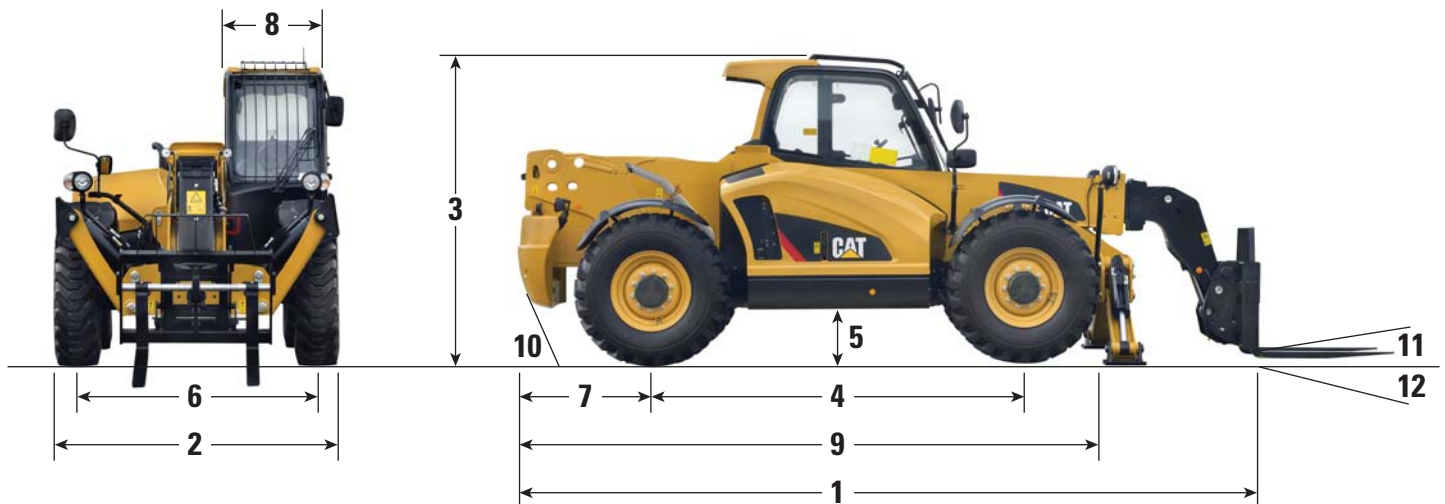
Front Axle	High bias, planetary reduction hubs with limited slip differential
Rear Axle	Open differential with planetary reduction hubs

## Tires

Standard	Mitas 14.00-24 16PR Air
Options	Goodyear 14.00-24 16PR Air Goodyear 14.00-24 16PR Foam

## Performance

Drawbar Pull	89.3 kN	20,075 lbf
Frame Leveling	±10	
Noise Levels		
In Cab	86 dB(A)	
External	106 dB(A)	
Off Road Towing Only	4990 kg	11,000 lb



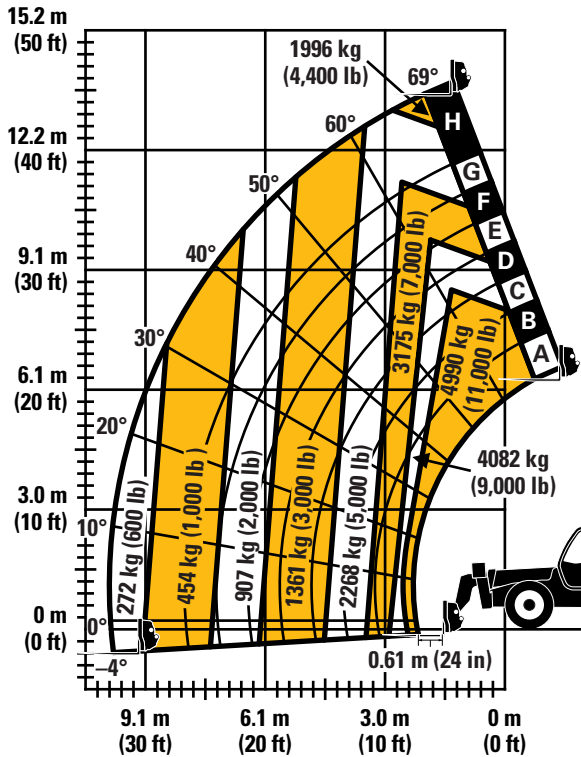
## Dimensions (All dimensions are approximate.)

<b>1</b> Overall Length to Front of Carriage	6465 mm	21.3 ft	<b>7</b> Overhang	1091 mm	3.6 ft
<b>2</b> Overall Width (standard tires)	2498 mm	8.2 ft	<b>8</b> Cab Width	825 mm	2.7 ft
Overall Width (stabilizers down)	3104 mm	10.2 ft	<b>9</b> Machine Length	6465 mm	21.3 ft
<b>3</b> Overall Height (standard tires)*	2700 mm	8.8 ft	<b>10</b> Departure Angle	32.8°	
<b>4</b> Wheelbase	3200 mm	10.5 ft	<b>11</b> Maximum Fork Crowd Angle	11°	
<b>5</b> Ground Clearance	450 mm	1.5 ft	<b>12</b> Maximum Fork Dump Angle	112°	
<b>6</b> Track	2078 mm	6.8 ft			

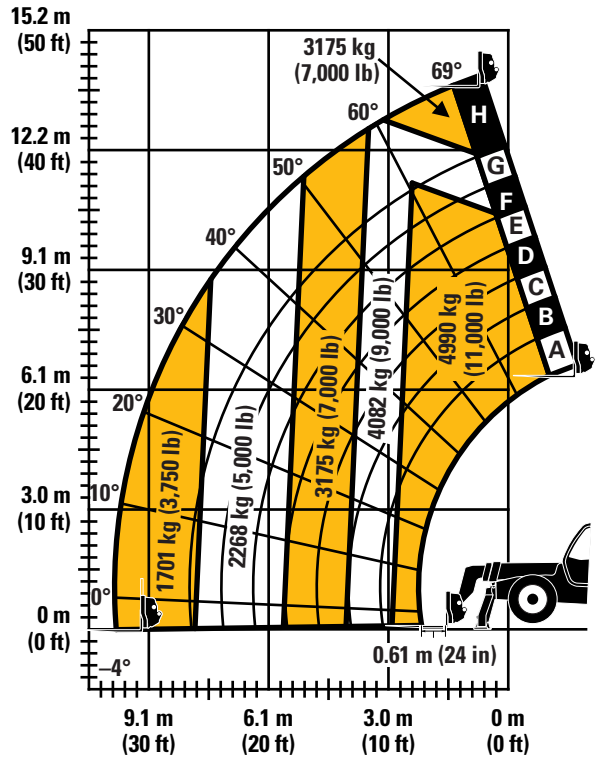
\*Add 200 mm (7.9 in) for beacon.  
Add 40 mm (1.6 in) for top guard.

## Load Chart and Dimensions

### TH514D Stabilizers Up



### TH514D Stabilizers Down



## NOTICE

Rated lift capacities shown are with machine equipped with carriage and pallet forks. The machine must be level on a firm surface with undamaged, properly inflated tires. Machine specifications and stability are based on rated lift capacities at specific boom angles and boom lengths. (If specifications are critical, the proposed application should be discussed with your dealer.)

DO NOT exceed rated lift capacity loads, as unstable and dangerous machine conditions will result.

DO NOT tip the machine forward to determine the allowable load.

Use only approved attachments with proper material handler model/attachment load capacity charts displayed in the operator's cab. OSHA requires all rough terrain forklift operators be trained according to OSHA 29 CFR 1910.178 (1).

*Due to continuous product improvements, machine specifications and/or equipment changes may be made without prior notification. This machine meets or exceeds ANSI/ITSDF B56.6-2016 as originally manufactured for intended applications.*

# TH514D Telehandler

**Standard and Optional Equipment** (Standard and Optional equipment may vary. Consult your Cat dealer for details.)

	Standard	Optional		Standard	Optional
<b>Operator Environment</b>			<b>Other Equipment</b>		
Canopy, Open	✓	—	Boom Brushes	—	✓
Cab, Enclosed	—	✓	Ride Control	—	✓
Reversing Camera	—	✓	Single Auxiliary Service to Boom Head	✓	—
Reversing Sensors	—	✓	2 <sup>nd</sup> Auxiliary Service to Boom Head	—	✓
Large Electronic Display Screen	—	✓	Tool Box	—	✓
Sunscreen	—	✓	<b>Tires</b>		
Mechanical Suspension Seat with Seat Belt	✓	—	Mitas 14.00-24 16PR Air	✓	—
Air Suspension Seat with Seat Belt	—	✓	Goodyear 14.00-24 16PR Air	—	✓
Seat Belt 76 mm (3 in)	—	✓	Goodyear 14.00-24 16PR Foam	—	✓
Screen Guard	—	✓	<b>Tow Hitches</b>		
Roof Guard	—	✓	Off Road Tow Hitch	✓	—
Heater/De-mister	—	✓	<b>Quick Couplers</b>		
Air Conditioning	—	✓	Manual Cat “IT” Interface	✓	—
Multi Function Joystick Controller with FNR	✓	—	Hydraulic Cat “IT” Interface	—	✓
Column Mounted FNR Lever	—	✓	<b>Work Tools</b>		
Front and Rear Windscreen Wipers	—	✓	Floating Fork Carriage	—	✓
Roof Wiper	—	✓	Dual Positioning Fork Carriage	—	✓
SAHR Parking Brake	✓	—	Side Shift Carriage	—	✓
<b>Electrical</b>			1 m <sup>3</sup> (1.3 yd <sup>3</sup> ) General Purpose Bucket	—	✓
1 × 12V 1,000 CCA Battery	✓	—	1.5 m <sup>3</sup> (1.95 yd <sup>3</sup> ) Rehandling Bucket	—	✓
2 × 12V 1,000 CCA Batteries	—	✓	Fork Rotator Carriage	—	✓
Block Heater 110 Volt	—	✓	Auger	—	✓
Work Lights, 4 × Cab Mounted (2 front, 2 rear) 2 × Boom Mounted	—	✓	Concrete Mixer Bucket	—	✓
Fog Lights	—	✓	Truss Boom (with winch)	—	✓
Product Link™ Ready, Version 641	—	✓	Trash Hopper	—	✓
Reverse Alarm	✓	—	Pipe Grapple	—	✓
Rotating Beacon	—	✓	Sweeper Collector	—	✓
			Side Tilt Carriage	—	✓
			Swing Carriage	—	✓
			Fork Mounted Platform	—	✓

For more complete information on Cat products, dealer services, and industry solutions, visit us on the web at [www.cat.com](http://www.cat.com)

© 2017 Caterpillar  
All rights reserved

Materials and specifications are subject to change without notice. Featured machines in photos may include additional equipment. See your Cat dealer for available options.

CAT, CATERPILLAR, SAFETY.CAT.COM, their respective logos, “Caterpillar Yellow” and the “Power Edge” trade dress, as well as corporate and product identity used herein, are trademarks of Caterpillar and may not be used without permission.

AEHQ7991-01 (08-2017)  
Replaces AEHQ7991  
(Americas North)

