



# ALL THE RIGHT CHOICES CAT<sup>®</sup> MINING UNDERCARRIAGE

**OPTIONS TO MATCH YOUR APPLICATION  
AND UNDERFOOT CONDITIONS**



LARGE TRACK-TYPE TRACTORS, HYDRAULIC MINING SHOVELS,  
ELECTRIC ROPE SHOVELS, AND ROTARY DRILLS



# LOWER COST. LONGER LIFE.

## **GENUINE CAT BRANDED UNDERCARRIAGE IS NEVER MANUFACTURED BY A COMPETITOR.**

Undercarriage represents an average 50% of your machine's owning and operating costs, so it makes sense to invest in a system that will deliver the most value. With 117 years of undercarriage innovation, we're dedicated to giving you the best products—and we never stop working to make them better.

Every Cat® Undercarriage is designed by Caterpillar engineers and built to exacting specifications based on businesses just like yours. We use on-board technology like load analysis to develop better products that match your machine and your applications – and lower your costs.

Caterpillar designs and manufactures all of our mining undercarriage products. You won't find genuine Cat branded undercarriage anywhere else.

**LET'S DO THE WORK.™**

# CAT MINING UNDERCARRIAGE

DELIVERING LONGER WEAR LIFE AND LOWER COST PER HOUR  
SO YOU CAN MOVE MORE MATERIAL, MORE EFFICIENTLY.

All Cat Undercarriage components are integrated with the machine and designed to work as a system. Caterpillar product support, warranty, undercarriage assurance programs, and worldwide parts distribution network ensure responsive service and long life.



**CONVENTIONAL  
D9, D10, D11**

## TRACK-TYPE TRACTORS

Caterpillar continues to innovate and improve undercarriage performance to ensure your investment works for you.

- High-quality materials and carefully controlled manufacturing processes deliver reliable, durable components that wear at a balanced rate
- Longer life and predictable, manageable wear mean you get maximum undercarriage performance at the lowest possible operating cost, with planned downtime instead of surprises



**CONVENTIONAL 6015-6020**



**SHOVEL STYLE 6030-6090**

## HYDRAULIC MINING SHOVELS

Experience increased uptime and low operating costs with Cat Undercarriage designed and built specifically to withstand the rigors of any digging environment.

- Heavier track chain handles high field loads
- Larger diameter track pins increase strength
- Reduced pitch extension wear increases track chain life by 20% to 40%



**SHOVEL STYLE  
7295-7495**

## ELECTRIC ROPE SHOVELS

Keep productivity up with undercarriage designed and built specifically for your challenging conditions.

- Larger diameter idler reduces contact stress with the track link
- Larger track roller shaft increases roller durability and life
- Larger track roller tread reduces contact stress with track



**CONVENTIONAL  
ALL TRACK AND ROTARY**

## ROTARY DRILLS

Your rotary drill just got a new lease on life. Cat Grease Lubricated Track (GLT) Undercarriage is built for the rigorous conditions in mining applications.

- Larger undercarriage components, stronger assemblies, and 25% increase in internal wear
- All components are designed for extreme conditions and to increase undercarriage life

# TRACK-TYPE TRACTOR UNDERCARRIAGE

Cat Undercarriage works and wears as a system, ensuring a balanced wear life. That means significantly lower owning and operating costs, increased uptime, more productivity, and longer service life. It also reduces maintenance intervals and repair costs over the life of your equipment.

## CAT TRACK OPTIONS

### GENERAL DUTY

Specifically designed for applications with less than 5,000 hours wear life. This offering has no end-coated bushing and includes standard track pins. Bushings can be turned.

Other Features: General Duty wear life vs. Standard is at minimum 80% in same application, with industry standard performance and price

### HEAVY DUTY (SCALLOP RESISTANT LINK)

This track is specifically designed for applications with greater than 5,000 hours wear life. End coated bushings provide longer seal life and coated track pins provide exceptional performance—the only coated components in the industry, offering industry-leading performance.

Other Features: SRL links, guaranteed wet bushing turns, increased link weight to resist cracking in even the toughest conditions, single-tooth master link

### HEAVY DUTY EXTENDED LIFE (HDXL) WITH DURALINK™

This track is specifically designed to reduce scalloping in high-abrasion conditions. This technology is part of a complete package of components aimed at increasing the life of the entire undercarriage. With it, you can expect link wear life to increase by up to 30%, along bushing wear life to increase up to 40%. That's the longest life and lowest operating costs in the industry.

Other Features: SRL steel with profiled link, new bushing end coatings that increases seal life up to 8,000 hours, single tooth master link



# CAT GENERAL DUTY TRACK

## PERFORMANCE YOU CAN COUNT ON

We recommend General Duty Undercarriage for your low-to-moderate impact applications where the elevated performance of the Cat Heavy Duty Undercarriage is not needed.

- While General Duty track is built to different specifications than Heavy Duty, we design it so General Duty and Heavy Duty components are interchangeable. That eliminates any need for retrofitting and keeps your machine downtime to a minimum. And Cat Heavy Duty shoes can be installed on General Duty link assemblies, making them more flexible to meet your needs.
- Your Cat dealer has General Duty parts stocked and available for fast turnaround, keeping you and your machine working.
- General Duty offers a variety of track shoe options. In addition to undercarriage components, track shoe selection can impact traction and flotation as well as overall undercarriage wear life. For the conditions in which General Duty Undercarriage will typically operate, extreme service shoes offer optimal performance and wear life. (General Duty extreme service shoes for track-type tractors are available in preassembled track groups.)
- D9, D10, and D11 General Duty comes with PPR, which prevents end-play generation (the outward movement of the links on the pin) and ensures oil retention in high-impact conditions.
- General Duty is covered by Cat Undercarriage Assurance. Ask your Cat dealer for details.

# CAT HEAVY DUTY TRACK

## TOUGH TRACK FOR TOUGH JOBS

Specifically engineered to match the requirements of medium-size machines with an elevated sprocket operating in demanding work environments, Cat Heavy Duty track is much more than just another version of conventional Cat Sealed and Lubricated Track (SALT).

In most tough underfoot conditions, Heavy Duty track can extend your undercarriage system life up to 20 percent more than Cat General Duty, with the greatest benefits realized in aggressive, high-impact applications such as:

- Logging/reforestation
- Side-sloping work
- Rocky conditions
- Any uneven terrain with wide track shoes (specifically Low Ground Pressure (LGP) machines)

### HEAVY DUTY TRACK COMPARED TO GENERAL DUTY TRACK

Component	Benefit
<b>LINKS</b>	<ul style="list-style-type: none"><li>• Greater bushing retention</li><li>• Deeper heat-treat</li><li>• Increased strength</li></ul>
<b>BUSHING</b>	<ul style="list-style-type: none"><li>• Increased Retention</li></ul>
<b>PIN</b>	<ul style="list-style-type: none"><li>• Increased Retention</li></ul>

*Results may vary based upon application.*

# HEAVY DUTY EXTENDED LIFE UNDERCARRIAGE WITH DURALINK (HDXL)

## INNOVATION DRIVES 20 TO 40% LONGER LIFE

Take your Heavy Duty Undercarriage to the next level with exceptional wear life and lower cost per hour than competitive brands, with proven 20-40% longer life. Designed for maximum durability, our HDXL systems with Cat DuraLink are engineered with additional wear material, heat treatment, and increased sealability after bushing turns. That means more uptime for your business.

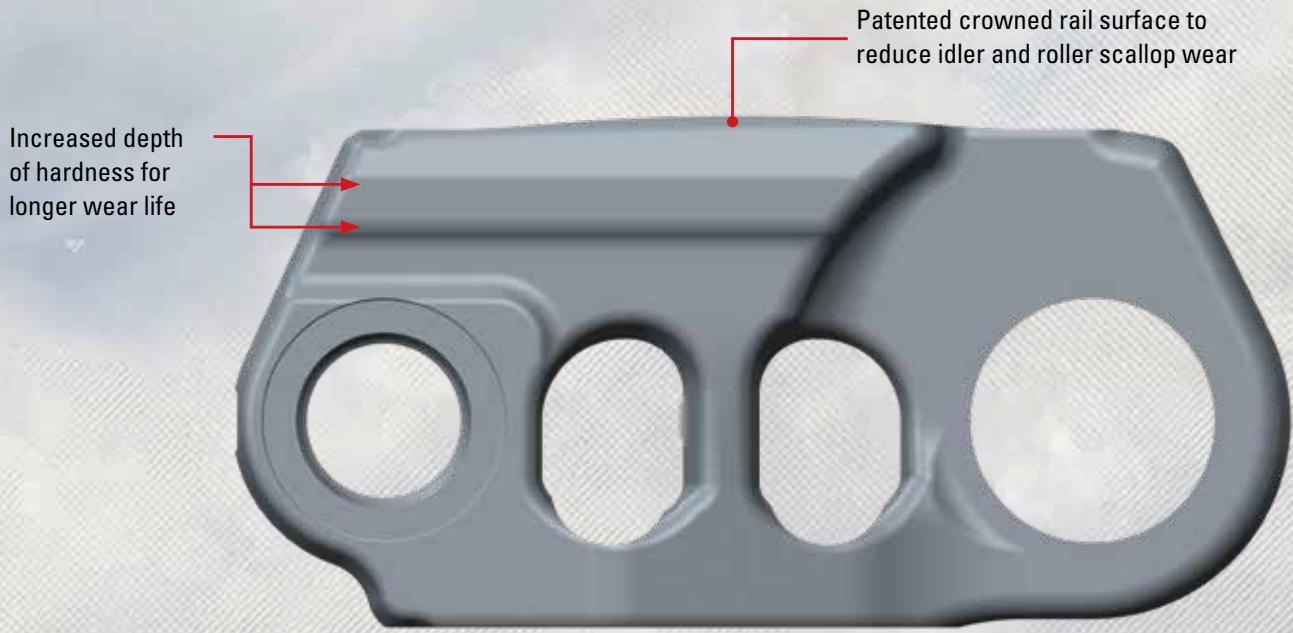
Enhancements include:

- Scallop reducing design wear surface to eliminate vibration
- Increased link wear material for extended wear life
- Added material and redesigned at the nut seat window to eliminate cracking

*Available for D9, D10N, D10R, D10T, and D11.*



# PATENTED CATERPILLAR DESIGN

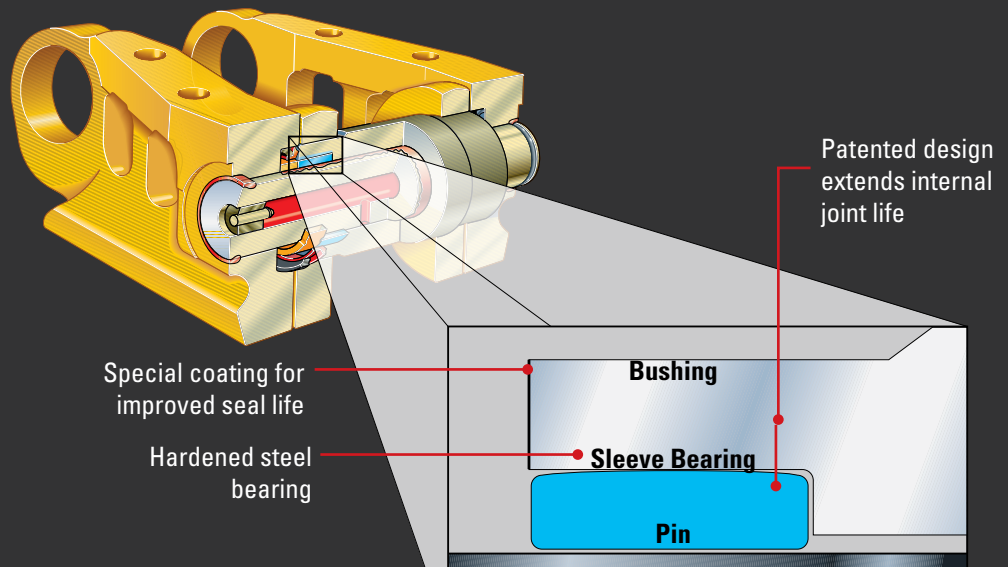


## SLEEVE BEARING TRACK UNDERCARRIAGE A CATERPILLAR EXCLUSIVE OFFERING TO MAXIMIZE LIFE AND MINIMIZE DOWNTIME

With more than ten years of proven performance in the field, the patented Cat Sleeve Bearing Track design has demonstrated its ability to eliminate galling, increasing track and keeping your machines working when you need them.

- Standard on all D11N, D11R, and D11T Track-Type Tractors
- Designed to operate at higher speeds and greater loads
- Eliminates galling between pin and bushing
- Increases track reseal point to 8,000 hours on HDXL and 6,000 hours on Heavy Duty

Because it extends undercarriage life, the need for service before normal bushing turn time is also reduced—reducing maintenance costs and unscheduled downtime. Like all Cat undercarriage, it's built to last. Longer life and predictable wear mean you get maximum performance at the lowest possible operating cost.



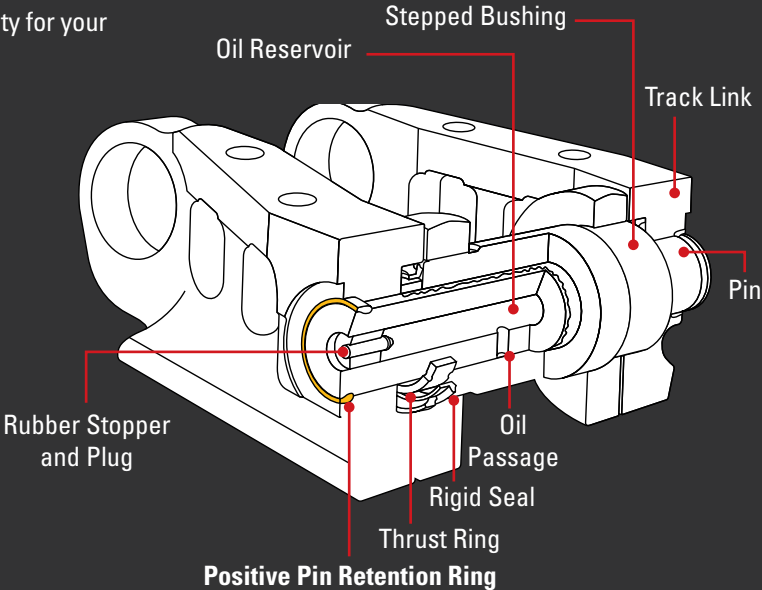
# POSITIVE PIN RETENTION (PPR) TRACK

## DESIGNED FOR MAXIMUM TRACK LIFE

PPR track features specially machined links and pins that allow for the use of a metal retaining ring. This ring is pressed into the groove between the pin and link, locking the joint to a predetermined factory end-play specification. That means more uptime for your machine—and more productivity for your business.

- Prevents end-play generation (the outward movement of the links on the pin)
- Ensures oil retention in high-impact conditions
- Available on General Duty, Heavy Duty, and Heavy Duty Extended Life with DuraLink.

This exclusive Caterpillar design is recommended for applications that generate high impact loading such as mining, heavy construction, demolition, and waste disposal. Machines equipped with wider shoes, Extreme Service shoes, or Super Extreme Service shoes should







# HYDRAULIC MINING SHOVEL, ELECTRIC ROPE SHOVEL AND ROTARY DRILL UNDERCARRIAGE

NEW OFFERINGS ARE AVAILABLE TO REPLACE EXISTING UNDERCARRIAGE ON OLDER MACHINES WITH GENUINE CAT UNDERCARRIAGE

CAT TRACK OPTIONS	ROTARY DRILL CAPABILITY				
	MD6290/ SKR	MD6240/ SKFX	MD6420A/ SKS	MD6540/ SKL	MD6640/ 49HR
GLT (GREASED LUBRICATED TRACK)	•	•			
GLT WITH PPR2 (POSITIVE PIN RETENTION 2)			•	•	•
	TRACK DRILL CAPABILITY				
	MD5075/ R30C	MD5090 345-345S	MD5125SCH/ 5000C/CL	MD5150/ R60	
GLT (GREASED LUBRICATED TRACK)	•	•	•	•	
	HYDRAULIC MINING SHOVEL CAPABILITY				
	6015	6020			
GLT WITH PPR2 (POSITIVE PIN RETENTION 2)	•	•			
	HYDRAULIC MINING SHOVEL CAPABILITY				
	6030	6040	6050	6060	6090
CAT UNDERCARRIAGE		•			•
CAT HEAVY DUTY UNDERCARRIAGE	•	•	•	•	
	ELECTRIC ROPE SHOVEL CAPABILITY				
	7495HR	7495HD	7495HF		
CAT UNDERCARRIAGE	•	•	•		

# YOUR ON-THE-JOB PARTNER

Your Cat dealer is the best ally in the business. Whatever you need, from products and service to advice on an application or DIY maintenance, a team of experts is right there for the asking. On-site or online, that connection will never fail you.

Our parts and service representatives:

- Have the best training and tools to manage your undercarriage system
- Regularly inspect and measure wear on your undercarriage
- Prepare reports with maintenance and repair alternatives so you can make informed decisions to reach the lowest possible cost-per-hour or per mile/km of operation

## MINING OUR FUTURE

We are serious about your business and about your Cat equipment. Based on your input, we are working on a multi-generational mining product development plan, dedicated to creating mine-site solutions. With significant testing and design improvements, we will bring products to market faster. We will also continue to enhance the existing undercarriage on all of our models as we use our experience to develop new innovations. Our goal is to offer you the lowest owning and operating costs with the strongest and most reliable power in the industry.



# POSITIVE PIN RETENTION 2 (PPR2) TRACK

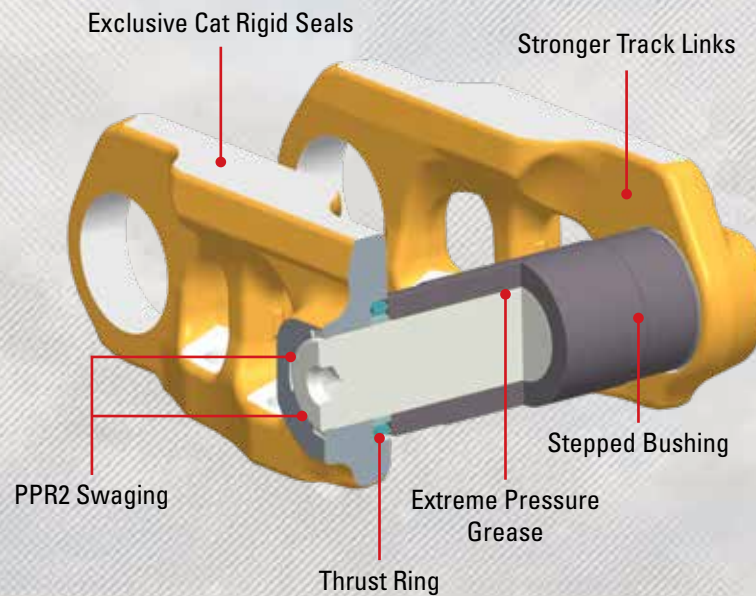
## EXCLUSIVE DESIGN EXTENDS TRACK LIFE AND COMPONENT REUSE

PPR2 was designed for high-impact and high-travel applications such as mining, heavy construction, pipe laying, demolition, and scrap handling. It mechanically locks the link to the pin to resist pin walking and link cracking for reliable sealing and maximum track life to minimize your owning and operating costs.

- Resists end-play generation and link movement on the pin
- Tightly controls seal motion for long internal pin/bushing wear life
- Resists fatigue and crack formation with redesigned, stronger track links

*Standard on MD6420A, 6015, 6020B, 374D, and 390D.*

Any application with high impact and/or travel rates will apply high loading and twisting forces into the track chain, and could benefit from PPR2. PPR2 should also be considered for machines equipped with wide or single grouser shoes.



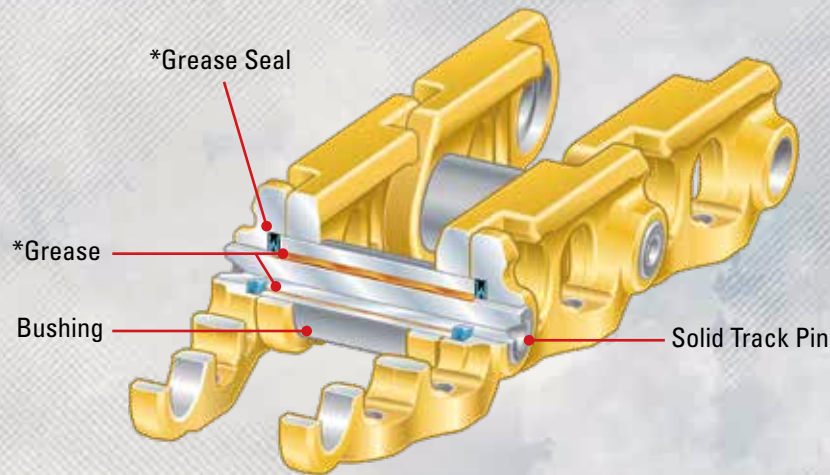
# CAT GREASE LUBRICATED TRACK

## IMPROVE UNDERCARRIAGE LIFE ON YOUR EXCAVATORS

Each track joint is sealed to retain the grease added between the pin and bushing, minimizing internal wear by at least 25% over sealed track. Grease Lubricated Track link assemblies are direct replacements for sealed link assemblies on Cat hydraulic excavator models.

- Increases external wear life by at least 20% with larger bushing
- Decreases track noise by eliminating metal-to-metal contact between pin and bushing
- Improves sprocket wear life with sprocket and link assembly pitch remaining matched for a longer period of operation
- Allows for enhanced undercarriage management opportunities

With sealed track, internal pin and bushing wear begins immediately because of contact and friction between the two parts. Grease Lubricated Track contains grease between the pin and bushing to eliminate the contact and friction wear elements, resulting in a significant increase of internal wear life of the link assembly.



\* Models MD5050-MD6240 use the Poly-W track seal as shown.  
Models MD6240-MD6640 use a rigid track seal.





# HYDRAULIC MINING SHOVEL (HMS)

## 6015 AND 6020 TRACK GROUP/LINK ASSEMBLY

- Designed with industry-leading technology
- Grease Lubricated Track (GLT) with exclusive Cat rigid seals
- Positive Pin Retention—PPR for the 6015B and PPR2 for the 6015/6020B
- Extra material in links with spalling-resistant design
- Stepped bushings

## TRACK ROLLERS

Designed with industry-leading technology

- Sealed-for-life track rollers
- Heavy duty components

## IDLER GROUP

Designed with industry-leading technology

- Hydraulic tension control
- Cat duo-cone seals
- Sealed-for-life idler

## SPROCKETS

- Life matched to rest of undercarriage system
- Alloy steel casting with selective heat treat to maximize life

## 6030, 6040, 6050, 6060, AND 6090 TRACK PADS

Designed for long wear life and maximum protection against breakage

- Cast pads from high-quality steel: alloy steel, case-hardened bushings
- Induction hardened roller paths and drive lugs for long wear life and tough interior
- High interference, straight bushings for longer joint life (6030, 6050, and 6060; 6040 1Q 2019)
- Cat service tooling; can be easily re-pinned and re-bushed
- Proprietary heat treat and quench system

## PINS

- Spring clip pin retention keeps pins from walking
- Larger pin bosses and improved pin retention to maximize life
- Improved pin retention
- Can be re-bushed

## SPROCKETS

- Life matched to rest of undercarriage system
- Alloy steel casting with selective heat treat to maximize life

## ROLLERS/IDLERS

- Caterpillar proprietary fixed axle technology to limit overheating
- Sealed-for-life with Cat seal system and oil lubrication to eliminate grease consumption for improved life and performance
- One-piece forged roller rim to improve structural integrity
- Simple bolt-on assembly

# ROTARY DRILLS

## DESIGNED TO INCREASE UNDERCARRIAGE AND COMPONENT LIFE

- Heavier track chain increases durability for handling high field loads
- GLT reduces pitch extension wear for 20-40% increased chain life
- Larger diameter idler and larger track roller tread reduce contact stress with track link
- Double flange rollers improve primary track guiding
- Stronger, welded roller guard assembly improves secondary track guiding





# ELECTRIC ROPE SHOVEL (ERS)

## TRACK PADS

- Designed for long wear life and maximum protection against breakage.
- Through hardened; optimum ductility and yield strength
- No tempered transition zone as with induction hardened pads

## PINS

- Alloy pins eliminate stress risers
- Simple, easy-to-service pin retention method
- Through hardened, alloy steel—no stress riser at shoulder

## SPROCKETS/TUMBLERS

- Highly tolerant of pitch extension
- Raised to provide optimum clearance of ground objects
- Self-seeking pitch line allows spreading load over several teeth
- Designed to last life of track pads with minimal maintenance
- Alloy steel casting with heat treat to maximize life

## IDLERS

- Greased lubrication eliminates catastrophic failures associated with seal failure and oil leakage
- Simple track tension adjustment system



# DEALER UNDERCARRIAGE ASSURANCE PROGRAMS

## UNDERCARRIAGE ASSURANCE PROGRAMS

To help you get the most from your Cat Undercarriage, your Cat dealer will make sure you have global service and support for all undercarriage configuration options, from advanced diagnostics to worldwide parts delivery.

Our Undercarriage Assurance Programs provide the lowest cost-per-hour undercarriage systems with support beyond the standard new machine or parts warranties. They cover all major moving undercarriage components on Cat Track-Type Tractors. Your Cat dealer has full details about coverage for specific undercarriage configuration options.

## DETAILS

### UNDERCARRIAGE ASSURANCE GOLD

A leakage and breakage program for D11 Sleeve Bearing Track. This coverage only applies after all other applicable coverages have expired. Gold coverage is 4 years or 6,000 hours, whichever occurs first.

### UNDERCARRIAGE ASSURANCE GENUINE

A leakage and breakage program for all other large track-type tractor machines. This coverage only applies after all other applicable coverages have expired. Genuine coverage is 4 years or 4,000 hours, whichever occurs first.

### ELECTRIC ROPE SHOVEL CAST CRAWLER SHOE ASSURANCE PROGRAM

Caterpillar offers a wear and breakage program developed specifically for the 125-inch cast crawler shoe in oil sands application. The coverage begins at the same time as the standard machine warranty or new parts warranty term and terminates in 4 years or 24,000 hours, whichever occurs first.

### ELECTRIC ROPE SHOVEL CAST CRAWLER SHOE ASSURANCE PROGRAM

Caterpillar offers a wear and breakage program developed specifically for the: 1) 79-inch cast crawler shoe used on the 7495 HR AND 2) 84-inch cast crawler shoe used on the 7495 HD. The coverage begins at the same time as the standard machine warranty or new parts warranty term and terminates in 4 years or 16,000 hours, whichever occurs first.

### HYDRAULIC MINING SHOVEL CAST CRAWLER SHOE ASSURANCE PROGRAM

Caterpillar offers a wear and breakage program developed specifically for the HD cast crawler shoes used on 6030-6060. The coverage begins at the same time as the standard machine warranty or new parts warranty term and terminates in 3 years or 15,000 hours, whichever occurs first.

# COMPREHENSIVE SUPPORT

To help you get the most from your Cat Undercarriage, Caterpillar and Cat dealers are dedicated to providing you with global service and support for all undercarriage configuration options—from advanced diagnostics to worldwide parts delivery.

## UNDERCARRIAGE ASSURANCE PROGRAMS

Our Undercarriage Assurance Programs were developed to demonstrate our commitment to provide you the lowest cost-per-hour undercarriage systems. Assurance Programs offer you support beyond the standard new machine or parts warranties. They cover all major moving undercarriage components on Cat Track-Type Tractors, Track-Type Loaders and Track-Type Hydraulic Excavators. See your Cat dealer for full details about coverage for specific undercarriage configuration options.

## CUSTOM TRACK SERVICE (CTS)

An improperly managed undercarriage can cause downtime and account for more than half of machine maintenance costs. That's why we use the most advanced diagnostic equipment available to provide Custom Track Service (CTS) for maintaining your undercarriage system.

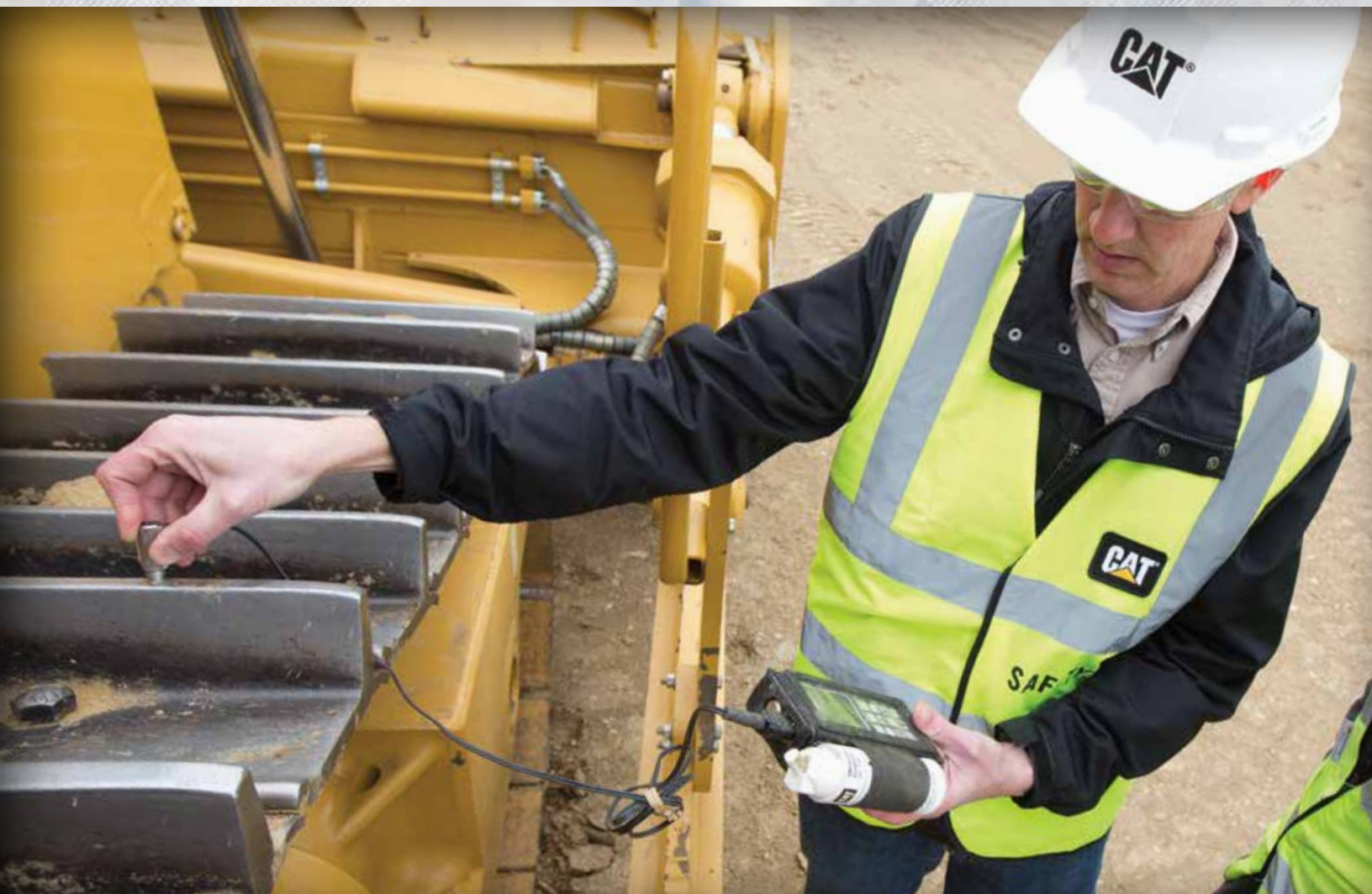
With CTS, we can accurately monitor undercarriage performance and predict wear rates so you can evaluate service options, plan maintenance, and fit downtime into your schedule. And because CTS analysis can be completed on the job site, you can make informed decisions that keep your operating costs as low as possible, without sacrificing uptime.

## WORLDWIDE PARTS AVAILABILITY

Our industry-standard parts distribution network makes most new parts available to you anywhere in the world, usually within 24 hours.

## CONSULT WITH YOUR CAT DEALER TODAY

Your Cat dealer has the undercarriage expertise and selection tools to help you make the best decisions for your machine, application, and owning and operating needs.





### INSIST ON CAT UNDERCARRIAGE

Keep your machines running so they can keep adding to your bottom line. Get the lowest owning and operating costs and maximize equipment uptime with genuine Cat undercarriage systems that precisely match your machine and application. Your local dealer has the knowledge and selection tools to help you choose the best option for your operation. Rugged, oversized components and excellent serviceability, plus unmatched support from the global Cat dealer network, keep you working.



PEDJ0201-05

© 2020 Caterpillar. All Rights Reserved. CAT, CATERPILLAR, LET'S DO THE WORK, their respective logos, "Caterpillar Corporate Yellow", the "Power Edge" and Cat "Modern Hex" trade dress as well as corporate and product identity used herein, are trademarks of Caterpillar and may not be used without permission.