

336F L XE

Hydraulic Excavator

2017



Engine

Engine Model	Cat® C9.3 ACERT™
Power – ISO 14396	234 kW/313 hp (318 PS)
Power – ISO 9249	228 kW/306 hp (310 PS)

Drive

Maximum Travel Speed	4.8 km/h
Maximum Drawbar Pull	294 kN

Operating Weights

Minimum Weight	36 100 kg
Maximum Weight	40 300 kg

The 336F XE is the latest machine from Caterpillar that will significantly lower your owning and operating costs.

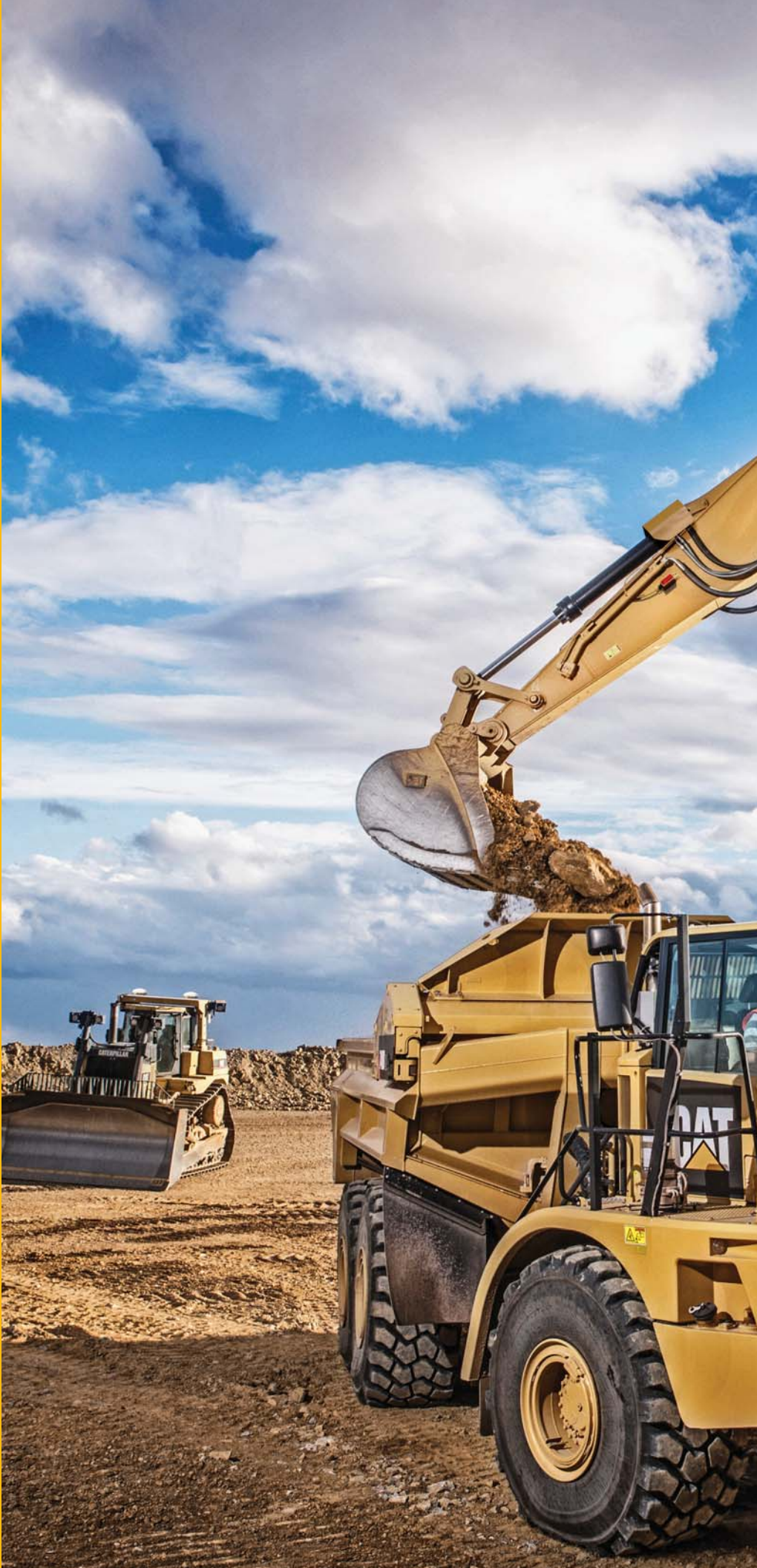
Built with our proven hydraulic hybrid system, this excavator will cut your fuel consumption by up to 20% compared to our standard 336E – a market leader in and of itself for high efficiency.

Unlike models from other manufacturers, the 336F XE is loaded with productivity boosting technology that will help improve your bottom line even more. Technologies like the new Cat Production Measurement Payload system, Cat Grade 3D and Cat Grade Assist, and Product Link™ come standard on this machine – all to help you easily do work more quickly and efficiently.

So if you are looking for the absolute maximum level of productivity and efficiency from a 36-ton machine, look no further than the 336F XE.

Contents

Equipping Every Customer for Success4
Cat Hybrid Technology6
Fuel Efficient7
Reliable and Productive8
Easy to Operate10
Durable Structures12
Durable Linkages13
Versatile14
Cat Connect Technologies16
Safe Work Environment18
Serviceable19
Complete Customer Care20
Sustainable20
Specifications21
Standard Equipment32
Optional Equipment33
Notes34





CAT

CAT
336F
L XE
LIII

HYBRID

GRADE CONTROL

CAT

Equipping Every Customer for Success

Building products just for you and your type of work.





Understanding your needs and requirements leads us to developing innovative products – products that help you win in a competitive environment. The 336F XE with hydraulic hybrid technology is the latest example of such an innovative product. This excavator is built for those of you who work machines long and hard and need the absolute highest level of productivity. When you see XE on a Cat machine, you can count on it being the most technologically advanced, fuel-efficient machine capable of working in all applications and material types.

Caterpillar also offers a traditional 336F model. This machine is built for those of you who also get paid by the job and are looking for a high level of productivity. Even though it isn't equipped with hydraulic hybrid technology, the 336F provides excellent fuel efficiency and productivity compared to competitive offerings.

So when you think of XE, think of the following attributes:

- Reliable, durable, and rebuildable
- Low cost per unit of work
- Breakthrough and innovative
- Maximum efficiency

When you think of the traditional model, think of these attributes:

- Reliable, durable, and rebuildable
- Low cost per unit of work
- Proven
- Highly efficient

No matter which model you choose, if it has the Cat brand on it, you can depend on it being a quality-made machine backed by the world's finest product support.

Cat Hybrid Technology

The more it works, the more you save.



Up to
20%
less fuel consumption than 336F –
the fuel economy and performance
leader in its size class



Our Smart Valve Is Smart For You

The 336F LXE's hydraulic hybrid system is unlike hybrid systems available from any other heavy equipment manufacturer in business today. The key ingredient is the ACS valve, which you can find only on the Cat brand.

Think of the ACS valve as the "brain" of the system – one that independently controls machine functions and directs hydraulic energy where you need it precisely when you need it. Because the ACS valve is fully integrated with the pump and hybrid system, you will experience the same extraordinary control, hydraulic power, and lift capacity that you get from our traditional high-production machines with the added benefit of dramatically reduced fuel consumption. That's why we are now offering the valve on our larger machines like the 374F and 390F.

Smart valve. Smart machine. Simply a smart investment for your business.

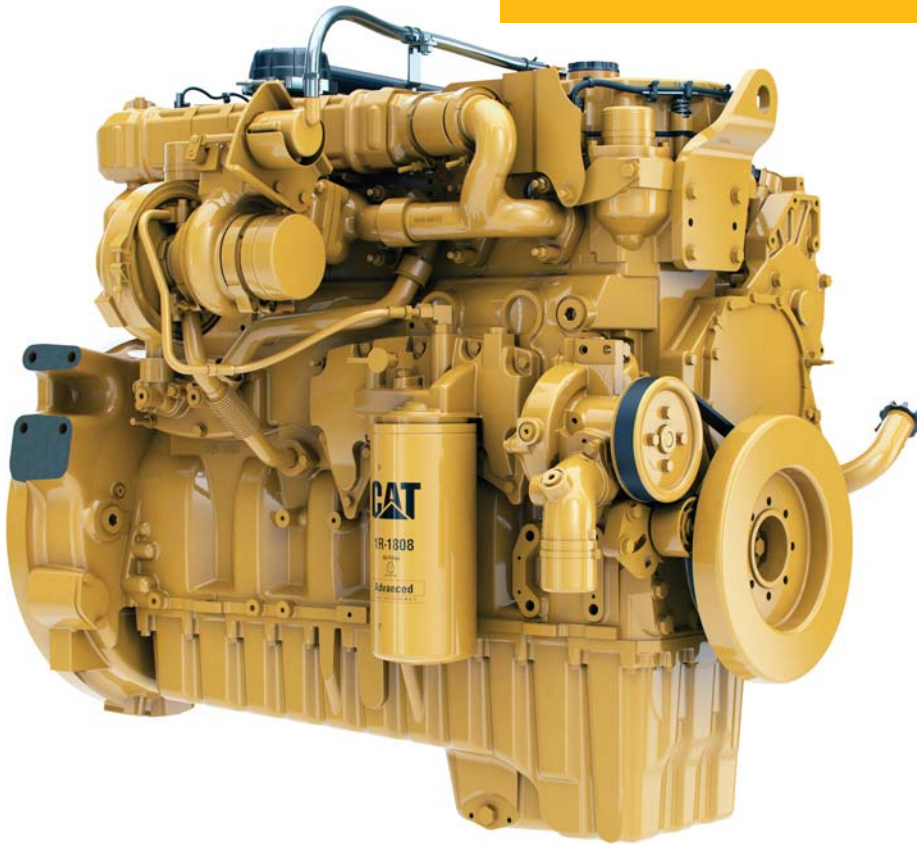
The 336F LXE uses three building block technologies to deliver outstanding fuel savings and performance for you:

- The Cat Electronic Standardized Programmable (ESP) pump smoothly transitions between the hydraulic hybrid power sources, engine, and accumulator to conserve fuel.
- The Cat Adaptive Control System (ACS) valve optimizes performance by intelligently managing restrictions and flows to control machine motion.
- Instead of wasting kinetic energy during swing braking, the Cat Hydraulic Hybrid Swing System pressurizes the accumulator to stop the machine and then uses that pressure when needed to accelerate the machine later.

The hydraulic hybrid system is a simple, reliable, and cost-effective solution that will help you significantly reduce your cost per ton.

Fuel Efficient

Engineered to lower your operating costs.



The Cat C9.3 ACERT engine meets EU Stage IV emission standards and it does so without interrupting your job process. Simply turn the engine on and go to work. It will look for opportunities in your work cycle to regenerate itself, and it will give you plenty of power for the task at hand – all to help keep your owning and operating costs to an absolute minimum.

A Smart Design for Any Temperature

The 336F LXE features a side-by-side cooling system that allows you to put the machine to work in extremely hot and cold conditions. The system is completely separated from the engine compartment to reduce noise and heat. Plus it features easy-to-clean cores and a new variable-speed fan that reverses to blow out unwanted debris that may accumulate during your work day.

Biodiesel Not A Problem

The C9.3 ACERT engine can run on biodiesel fuel up to B20 blended with ULSD. Just fill it up and go.

Proven Technology

The right technologies fine-tuned for the right applications result in:

- **Improved Fuel Efficiency** – up to 20% fuel consumption savings, compared to 336E Stage IIIB.
- **Enhanced Reliability** through commonality and simplicity of design.
- **Maximized Uptime and Reduced Cost** with world-class support from the Cat dealer network.
- **Minimized Impact on Emission Systems** – designed to be transparent to the operator without requiring interaction.
- **Durable Design** with long life to overhaul.
- **Delivering Better Fuel Economy** with minimized maintenance costs while providing the same great power and response.



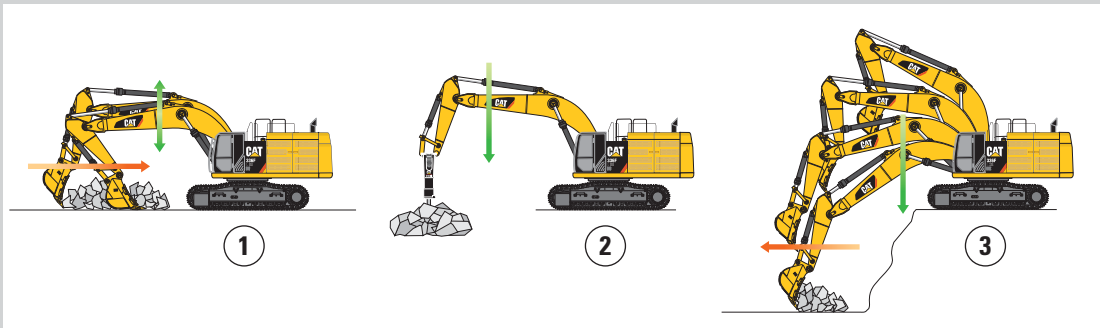
Reliable and Productive

Power to move your material with speed and precision.



SmartBoom™

Reduces Stress and Vibrations Transmitted to the Machine



Rock Scraping (1)

Scraping rock and finishing work is easy and fast. SmartBoom simplifies the task and allows the operator to fully concentrate on the stick and bucket while the boom freely goes up and down without using pump flow.

Hammer Work (2)

It has never been this productive and operator-friendly. The front parts automatically follow the hammer while penetrating the rock. Blank shots or excessive force on the hammer are avoided, resulting in longer life for the hammer and machine. Similar advantages are applicable when using vibratory plates.

Truck Loading (3)

Loading trucks from a bench is more productive and fuel efficient as the return cycle is reduced while the boom down function does not require pump flow.

Hydraulic Horsepower, a Cat Advantage

Hydraulic horsepower is the actual machine power available to do work through implements and work tools. It's much more than just the engine power under the hood – it's a core strength that differentiates Cat machines from other brands. In fact, pump and other system components work to put more power to the ground, in a highly controlled, user-friendly way. This means you will move more material in less time and keep more money in your pocket at the end of the day.

The heavy lift mode increases machine system pressure to improve lift – a nice benefit in certain situations. Heavy lift mode also reduces engine speed and pump flow in order to improve controllability.

Control Like No Other

Controllability is one of the main attributes of Cat excavators, and one of the key contributors to this is the main control valve. The valve opens slowly when your range of joystick lever movement is small and opens rapidly when movement is high. It puts flow where you need it when you need it, which leads to smoother operation, greater efficiency, and lower fuel consumption.

Auxiliary Hydraulics for Added Versatility

Auxiliary hydraulics give you greater tool versatility so you can take on more work with just one machine, and there are several options from which you can choose. A quick coupler circuit, for example, allows you to switch from one tool to another in a matter of minutes.

Easy to Operate

Comfort and convenience to keep you productive all day long.



Safe and Quiet Cab

Operators will enjoy the quietness and comfort of the all new cab thanks to special viscous mounts and special roof lining and sealing that limit vibration and unnecessary sound.

Excellent Ergonomics

Wide seats with air suspension and heat/cooling options, include a reclining back, upper and lower slide adjustments, and height and tilt angle adjustments to meet your needs for maximum comfort.

The fully automatic climate control system keeps operators comfortable and productive all day long in either hot or cold weather.

Storage spaces are located in the front, rear, and side consoles of the cab. A drink holder accommodates a large mug, and a shelf behind the seat stores large lunch or toolboxes.

Power supply sockets are available for charging your electronic devices like an MP3 player, a cell phone, or even a tablet.

Controls Just for You

The right and left joystick consoles can be adjusted to improve your comfort and productivity during the course of a day. The right joystick features a button that will reduce engine speed when you are not working to help save fuel. Touch it once and speed reduces; touch it again and speed increases for normal operation.



Easy to Navigate Monitor

The new LCD monitor is easy to see and navigate. Not only can it memorize up to 10 different work tools, it's also programmable in up to 44 languages to meet today's diverse workforce. The monitor clearly displays critical information you need to operate efficiently and effectively. Plus it projects the image from the rearview camera to help you see what's going on around you so you can stay safely focused on the job at hand.

Durable Structures

Made to work in your tough, heavy-duty applications.



Stable Undercarriage

The undercarriage contributes significantly to outstanding stability and durability.

Track shoes, links, rollers, idlers, and final drives are all built with high-tensile strength steel for long-term durability.

Cat Grease Lubricated Track 2 (GLT2) track link protects moving parts by keeping water, debris, and dust out and grease sealed in, which delivers longer wear life and reduced noise when traveling.

Optional guide guards help maintain track alignment to improve the machine's overall performance – whether you're traveling on a flat, heavy bed of rock or a steep, wet field of mud.

Robust Frames

You can expect excellent quality, reliability, and durability with the 336F XE. The machine's lower and upper frames are built to handle a hard day's work over and over again.

Great Weight

The counterweight is built with thick steel plates and reinforced fabrications to make it less susceptible to damage, designed with curved surfaces that match the machine's sleek, smooth appearance along with integrated housings to help protect the rearview camera.



Durable Linkages

Options to take on your far-reaching
or up-close tasks.

Booms and Sticks for Any Job

The 336F XE is offered with a range of booms and sticks. Each is built with internal baffle plates and is stress relieved for added durability, and each undergoes ultrasound inspection to ensure quality and reliability. Large box-section structures with thick, multi-plate fabrications, castings, and forgings are used in high-stress areas such as the boom nose, boom foot, boom cylinder, and stick foot to improve durability. Also, the boom nose pin retention method is a captured flag design for enhanced durability.

The Reach boom and sticks offer you excellent all-around versatility for general excavations work like multipurpose digging and loading.

The Mass boom and sticks offer your enhanced performance in heavy-duty material like rock. They provide higher digging forces due to special boom and stick geometry, and bucket linkage and cylinders are built for greater durability.

Pins

All front linkage pins have thick chrome plating, giving them high wear resistance. Each pin diameter is made to distribute the shear and bending loads associated with the stick and to help ensure long pin, boom and stick life.

Talk to your Cat dealer to pick the best front linkage for your applications.

Versatile

Do more jobs with one machine.



Get the Most from One Machine

The Cat combination of machine and tool provides a total solution for just about any application. Work tools can be mounted either directly to the machine or to a quick coupler, making it fast and easy to release one work tool and pick up another.

Change Jobs Quickly

Cat quick coupler brings the ability to quickly change attachments and switch from job to job. The Cat coupler is the secure way to decrease downtime and increase job site flexibility and overall productivity.

Available tool control remembers pressures and flows for up to 10 tools. Simply toggle through the monitor, select the tool, and go to work for maximum efficiency.

Dig, Rip and Load

A wide range of buckets dig everything from basic top soil to extreme, harsh material like ore and high quartzite granite. Rip through rock as an alternative to blasting in quarries. High-capacity buckets load trucks in a minimum number of passes for maximum productivity.

Break, Demolish and Scrap

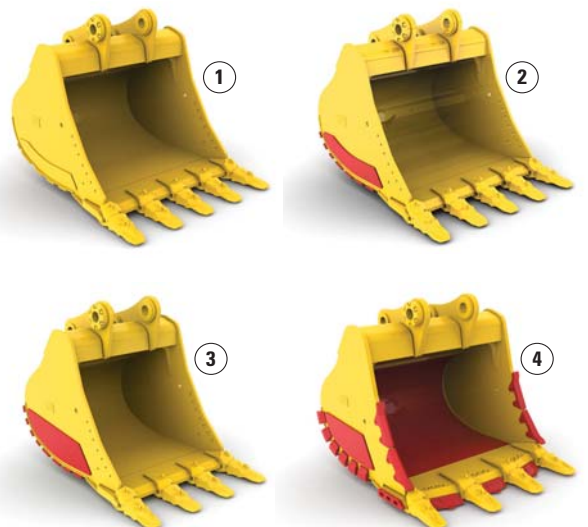
A hydraulic hammer ably equips your machine for breaking rock in quarries. It will also make taking down bridge pillars and heavily reinforced concrete on road demolition jobs no problem.

Multi-processor and pulverizer attachments make your machine ideal for demolition jobs and processing the resulting debris.

Shears with 360° rotation mount to the machine for processing scrap steel and metal.

Set Up Your Machine for Profitability

Your Cat dealer can install hydraulic kits to properly operate all Cat Work Tool attachments, maximizing the machine's uptime and your profit. All Cat Work Tool attachments are supported by the same Cat dealer network as your Cat machine.



1) General Duty (GD) 2) Heavy Duty (HD)
3) Severe Duty (SD) 4) Extreme Duty (XD)

Cat Connect Technologies

Monitor, manage, and enhance job site operations.



Cat Connect makes smart use of technology and services to improve your job site efficiency. Using the data from technology-equipped machines, you'll get more information and insight into your equipment and operations than ever before.

Cat Connect technologies offer improvements in these key areas:



EQUIPMENT
MANAGEMENT

Equipment Management – increase uptime and reduce operating costs.



PRODUCTIVITY

Productivity – monitor production and manage job site efficiency.



SAFETY

Safety – enhance job site awareness to keep your people and equipment safe.

PAYLOAD Technologies

Payload technologies accurately measure material being loaded or hauled. Payload data is shared with operators in real time to improve productivity, reduce overloading, and record progress.

Cat Production Measurement

Cat Production Measurement brings payload weighing to the cab, enabling operators to weigh loads “on the go.” Loads are weighed as the boom swings with no interruptions in the loading cycle, improving loading speed and efficiency. Operators can view load weights on the integrated display and know precisely how much material is in the bucket and when trucks are filled to target payload. Instant feedback gives operators the confidence to work more effectively, maximizing the potential of the entire fleet. Site managers can wirelessly access data via the VisionLink® web portal to measure production and monitor efficiency.



GRADE Technologies

Grade technologies combine digital design data and in-cab guidance to help you reach target grade quickly and accurately, with minimal staking and checking. That means you'll be more productive, complete jobs faster, in fewer passes, using less fuel, at a lower cost.



Cat Grade with Assist

Cat Grade with Assist ensures you can dig a level base with the right slope each and every time; now it works with tilt buckets to give you even greater versatility. With a touch of a button, the simple-to-use system automates boom and bucket movements typically done by the operator. Regardless of your experience or skill, you will be able to reach target grade up to 45% faster than with traditional grading techniques.

Cat Grade 3D

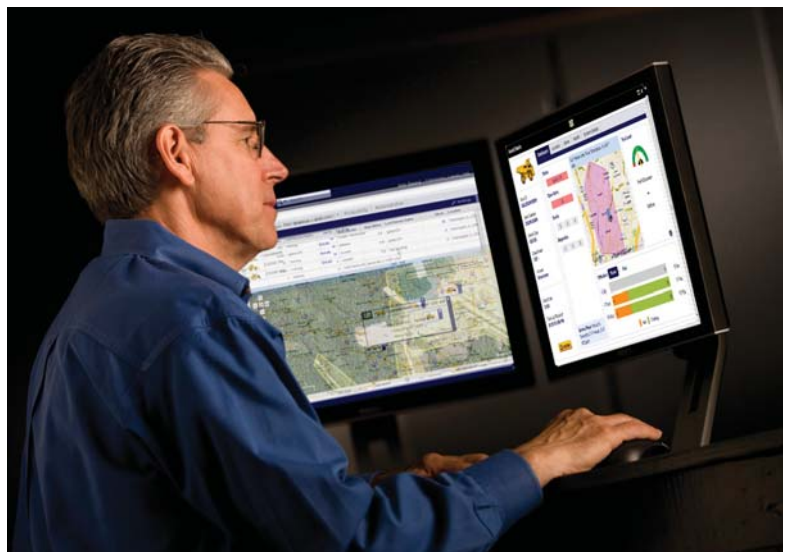
Cat Grade 3D is perfect for complex excavating projects that require precise cuts and contours. The 254 mm color monitor shows you exactly where to work and how much to cut or fill without staking or grade checking, delivering accuracy within 30 mm. Factory integration of most key components reduces field installation time and labor cost, making the system less costly for you compared to other options. Plus reliability is enhanced because built-in components are protected from damage, ensuring longer service life and more accurate results.

LINK Technologies

LINK technologies, like Product Link, are deeply integrated into your machine and wirelessly communicates key information, including location, hours, fuel usage, idle time and event codes.

Product Link/VisionLink

Easy access to Product Link data via the online VisionLink user interface can help you see how your machine or fleet is performing. You can use this information to make timely, fact based decisions that can boost job site efficiency and productivity, and lower costs.



Safe Work Environment

Features to help protect you day in and day out.

Secure Contact Points

Multiple large steps as well as hand and guard rails will get you into the cab as well as a leg up to the compartments.

Extended hand and guard rails allow you to safely climb to the upper deck. Anti-skid plates on the surface of the upper structure, and the top of the storage box area, reduce your slipping hazards in all types of weather conditions. They can be removed for cleaning.

Great Views

The new rearview and side-view cameras greatly enhance visibility behind and on the side of the machine to help the operator work more productively. A panoramic rearview is automatically displayed on the new multi-function monitor during reverse travel. As an option, a second display can be added, providing a dedicated full-time rearview of the job site.

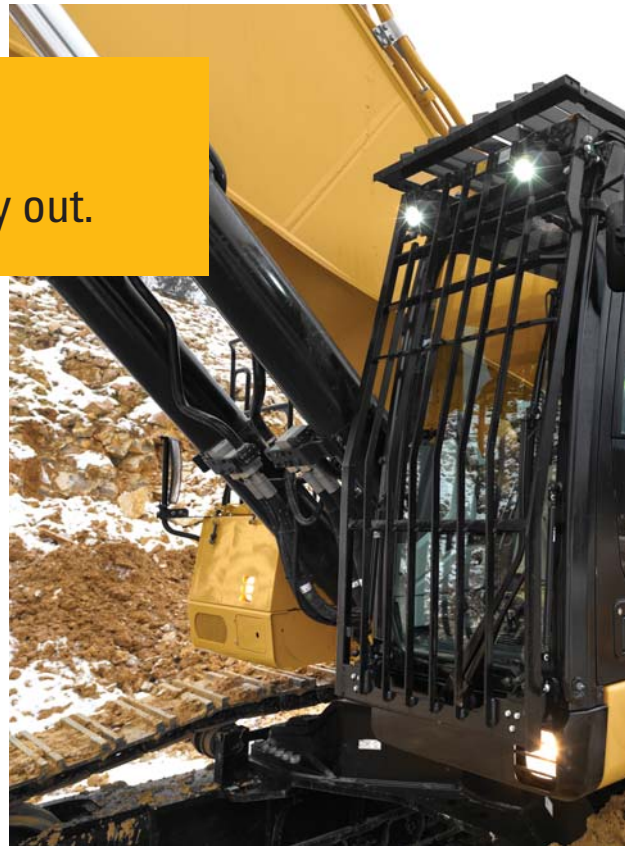
Smart Lighting

Halogen lights provide plenty of illumination. Cab and boom lights can be programmed to stay on for up to 90 seconds after the engine has been turned off to help you safely exit the machine.

A Safe and Quiet Cab

The ROPS-certified cab provides you with a safe working environment. It also contributes to your comfort because it's attached to a reinforced frame with special viscous mounts that limit vibration and unnecessary sound. Add in special roof lining and sealing and you have a cab that's as quiet inside as any of today's highway trucks.

Optional Falling Object Guards (FOGS) further protect you from debris coming to the cab.



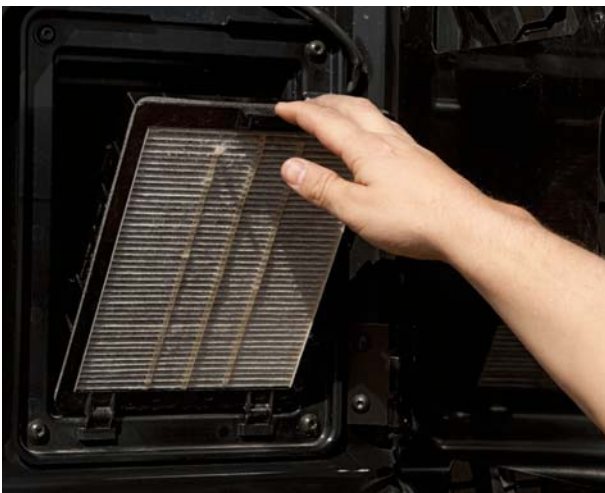


Ground-Level Access

You can reach most routine maintenance items like fuel and oil filters, fluid taps, and grease points from the safety and convenience of ground level. Not only do compartments feature wide service doors designed to help prevent debris entry, but they also securely latch in place to help make your service work simpler.

Serviceable

Designed to make your maintenance quick and easy.



A Fresh Idea

When you select ventilation inside the cab, outside air enters through the fresh air filter. The filter is conveniently located on the side of the cab to make it easy to reach and replace, and it is protected by a lockable door that can be opened with the engine key.

Quick and Convenient Fluids Service

S-O-SSM Oil sample and pressure ports provide easy checking of machine condition and are standard on every machine.

You can ensure fast, easy, and secure changing of engine and hydraulic oil with the QuickEvacTM option.

The fuel tank's drain cock makes it easy and simple for you to remove water and sediment during routine maintenance. Plus an integrated fuel level indicator pops up to help you reduce the possibility of fuel tank overfilling. An optional fast fill port accessible from ground level can make refueling even easier and faster.

An electric refueling pump allows you to refuel from other sources like a barrel or fuel reservoir when a fuel truck or regular fuel pump isn't on site. The pump automatically shuts off when the fuel tank is full.

A Smart Cooling Design

The high-ambient cooling system features a fuel-saving variable-speed fan and a side-by-side-mounted radiator and oil and air coolers for easy cleaning.

HYBRID

Sustainable Generations ahead in every way.

The 336F XE is designed to compliment your business plan, reduce emissions and minimize the consumption of natural resources.

- The 336F XE moves as much material as a standard 336F yet burns up to 20% less fuel. This means more efficiency and productivity for you with less resource consumption
- The C9.3 ACERT engine meets Stage IV emission standards.
- The machine has the flexibility of running on either ultra-low-sulfur diesel (ULSD) fuel with 10 ppm of sulfur or less, or up to biodiesel (B20) fuel blended with ULSD.
- An overfill indicator rises when the tank is full to help the operator avoid spilling.
- Quick fill ports with connectors ensure fast, easy, and secure changing of hydraulic oil.
- Major components are rebuildable, eliminating waste and saving money by giving the machine and/or major components a second life – and even a third life.
- Link technologies enable you to collect and analyze equipment and job site data so you can maximize productivity and reduce costs.
- The 336F XE is an efficient, productive machine that's designed to conserve our natural resources for generations ahead.

Complete Customer Care Unmatched support makes the difference.

Worldwide Parts Availability

Cat dealers utilize a worldwide parts network to maximize your machines' uptime. Plus they can help you save money with Cat remanufactured components.

Financial Options Just for You

Consider financing options and day-to-day operating costs. Look at dealer services that can be included in the machine's cost to yield lower owning and operating costs over time.

What's Best for You Today...and Tomorrow

Repair, rebuild, or replace? Your Cat dealer can help you evaluate the cost involved so you can make the best choice for your business.



336F L XE Hydraulic Excavator Specifications

Engine

Engine Model	Cat C9.3 ACERT
Power – SAE J1995	238 kW/319 hp (324 PS)
Power – ISO 14396	234 kW/313 hp (318 PS)
Power – ISO 9249	228 kW/306 hp (310 PS)
Bore	115 mm
Stroke	149 mm
Displacement	9.3 L

Drive

Gradeability	30°/70%
Maximum Travel Speed	4.8 km/h
Maximum Drawbar Pull	294 kN

Track

Track Options	850 mm 700 mm 600 mm
Number of Shoes – Each Side	49
Number of Track Rollers – Each Side	9
Number of Carrier Rollers – Each Side	2

Swing

Swing Speed	8.7 rpm
Swing Torque	109 kN·m
Maximum Swing Torque	134 kN·m

Service Refill Capacities

Fuel Tank Capacity	620 L
Cooling System	43 L
Engine Oil	32 L
Swing Drive (each)	19 L
Final Drive (each)	8 L
Hydraulic System (including tank)	380 L
Hydraulic Tank	175 L
DEF Tank	41 L

Sound Performance

Exterior – ISO 6395*	105 dB(A)
Operator – SAE J1166/ISO 6396	73 dB(A)

- Hearing protection may be needed when operating with an open operator station and cab (when not properly maintained or doors/windows open) for extended periods or in a noisy environment.
- When properly installed and maintained, the cab offered by Caterpillar, when tested with doors and windows closed according to ANSI/SAE J1166 OCT98, meets OSHA and MSHA requirements for operator sound exposure limits in effect at time of manufacture.

* As per European Union Directive 2000/14/EC as amended by 2005/88/EC.

Hydraulic System

Maximum Flow (total)	570 L/min
Main System	570 L/min
Swing System	276 L/min
Pilot System	28 L/min
Maximum Pressure	
Main System – Normal	35 000 kPa
Main System – Heavy Lift	37 000 kPa
Main System – Travel	35 000 kPa
Main System – Swing	31 500 kPa
Pilot System	4100 kPa
Boom Cylinder	
Bore	150 mm
Stroke	1440 mm
Stick Cylinder	
Bore	170 mm
Stroke	1738 mm
DB – Family Bucket Cylinder	
Bore	150 mm
Stroke	1151 mm
TB – Family Bucket Cylinder	
Bore	160 mm
Stroke	1356 mm

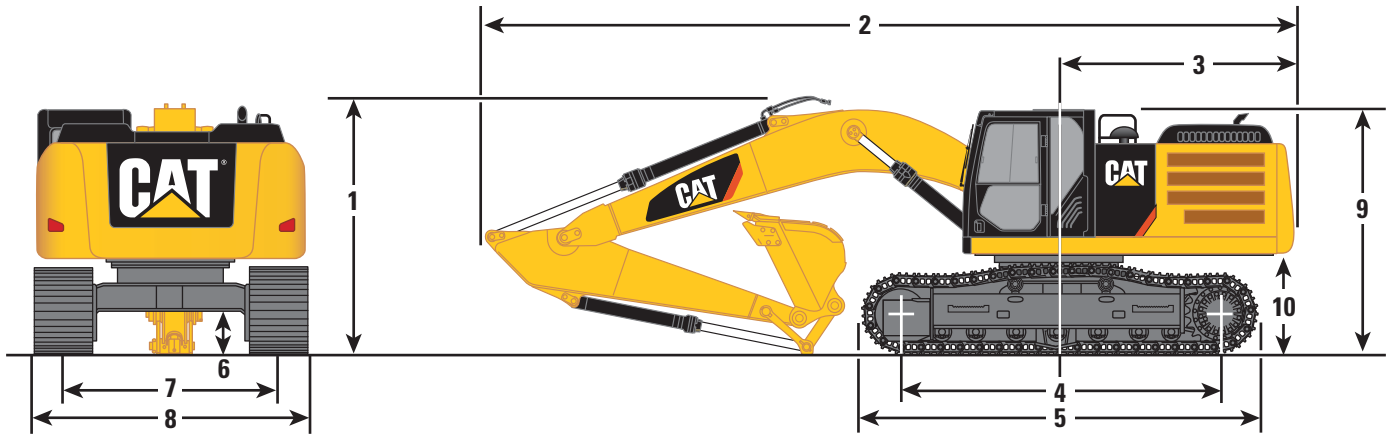
Standards (including tank)

Brakes	ISO 10265:2008
Cab/FOGS	SAE J1356/FEB88 ISO 10262:2008
Cab/ROPS	ISO 12117-2:2008
DEF	ISO 22241

336F L XE Hydraulic Excavator Specifications

Dimensions

All dimensions are approximate.



Boom Options

HD Reach Boom 6.5 m

Mass Boom 6.18 m

Stick Options

R3.2 DB

R2.8 DB

M2.55 TB

Stick Options	R3.2 DB	R2.8 DB	M2.55 TB
1 Shipping Height*	3500 mm	3650 mm	3630 mm
2 Shipping Length	11 160 mm	11 140 mm	10 850 mm
3 Tail Swing Radius	3490 mm	3490 mm	3490 mm
4 Length to Center of Rollers			
Long Undercarriage	4040 mm	4040 mm	4040 mm
Long Narrow Undercarriage	4040 mm	4040 mm	4040 mm
5 Track Length			
Long Undercarriage	5030 mm	5030 mm	5030 mm
Long Narrow Undercarriage	5030 mm	5030 mm	5030 mm
6 Ground Clearance*	510 mm	510 mm	510 mm
Ground Clearance**	480 mm	480 mm	480 mm
7 Track Gauge			
Long Undercarriage	2590 mm	2590 mm	2590 mm
Long Narrow Undercarriage	2390 mm	2390 mm	2390 mm
8 Transport Width			
Long Undercarriage			
600 mm Shoes	3190 mm	3190 mm	3190 mm
700 mm Shoes	3290 mm	3290 mm	3290 mm
800 mm Shoes	3390 mm	3390 mm	3390 mm
850 mm Shoes	3440 mm	3440 mm	3440 mm
Long Narrow Undercarriage			
600 mm Shoes	2990 mm	2990 mm	2990 mm
9 Cab Height	3160 mm	3160 mm	3160 mm
Cab Height with Top Guard	3360 mm	3360 mm	3360 mm
10 Counterweight Clearance**	1220 mm	1220 mm	1220 mm
Bucket Type	GP	GP	SD
Bucket Capacity	2.28 m ³	2.28 m ³	2.41 m ³
Bucket Tip Radius	1753 mm	1753 mm	1895 mm

Dimensions may vary depending on bucket selection.

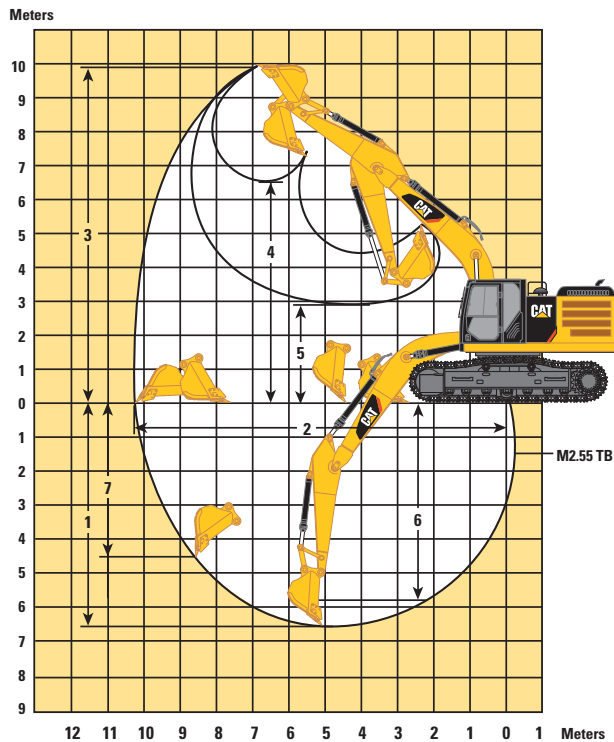
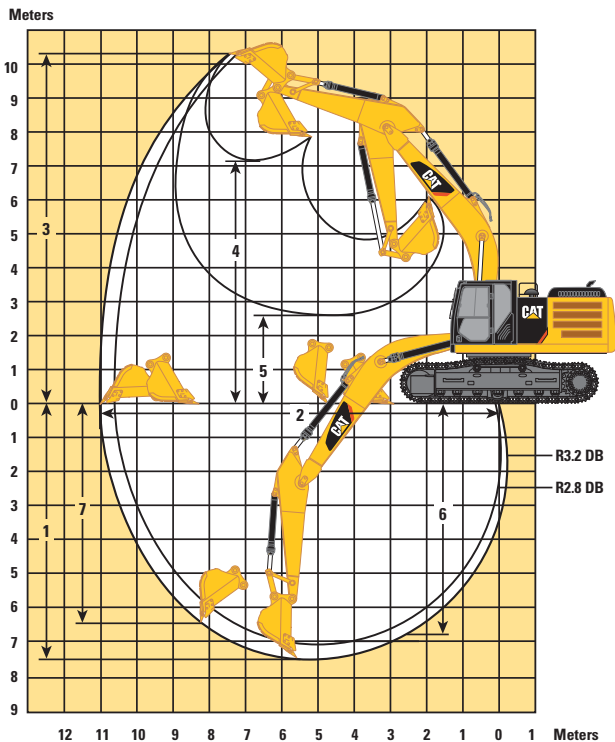
*Including shoe lug height

**Without shoe lug height

336F L XE Hydraulic Excavator Specifications

Working Ranges

All dimensions are approximate.



Boom Options

HD Reach Boom 6.5 m

Mass Boom 6.18 m

Stick Options

R3.2 DB

R2.8 DB

M2.55 TB

	R3.2 DB	R2.8 DB	M2.55 TB
1 Maximum Digging Depth	7490 mm	7090 mm	6650 mm
2 Maximum Reach at Ground Level	11 020 mm	10 710 mm	10 260 mm
3 Maximum Cutting Height	10 320 mm	10 370 mm	9970 mm
4 Maximum Loading Height	7110 mm	7110 mm	6620 mm
5 Minimum Loading Height	2610 mm	3010 mm	2920 mm
6 Maximum Depth Cut for 2440 mm Level Bottom	6820 mm	6390 mm	5810 mm
7 Maximum Vertical Wall Digging Depth	5500 mm	5470 mm	4450 mm
Bucket Type	GP	GP	SD
Bucket Capacity	2.28 m ³	2.28 m ³	2.41 m ³
Bucket Tip Radius	1753 mm	1753 mm	1895 mm

Dimensions may vary depending on bucket selection.

336F L XE Hydraulic Excavator Specifications

Operating Weights and Ground Pressures

	850 mm TG		800 mm TG		700 mm TG		600 mm TG		600 mm DG	
	Weight	Ground Pressure	Weight	Ground Pressure	Weight	Ground Pressure	Weight	Ground Pressure	Weight	Ground Pressure
	kg	kPa	kg	kPa	kg	kPa	kg	kPa	kg	kPa
Long Undercarriage										
HD Reach Boom 6.5 m										
HD R3.2 DB	38 900	51.1	38 600	53.9	37 900	60.5	37 600	70.0	38 400	71.5
HD R2.8 DB	38 900	51.1	38 600	53.9	37 900	60.5	37 600	70.0	38 400	71.5
Mass Boom 6.18 m										
M2.55 TB	40 300	53.0	40 000	55.9	39 300	62.7	39 000	72.6	39 800	74.1
Long Narrow Undercarriage										
HD Reach Boom 6.5 m										
HD R3.2 DB	38 800	51.0	38 500	53.8	37 800	60.4	37 500	69.9	38 300	71.3
HD R2.8 DB	38 800	51.0	38 500	53.8	37 800	60.4	37 500	69.9	38 300	71.3
Mass Boom 6.18 m										
M2.55 TB	40 200	52.9	39 900	55.7	39 200	62.6	38 800	72.3	39 700	74.0

Bucket and Stick Forces

Boom Options	Reach Boom 6.5 m		Mass Boom 6.18 m
	R3.2 DB	R2.8 DB	M2.55 TB
Stick Options	kN	kN	kN
General Duty			
Bucket Digging Force (ISO)	211.8	211.8	264.9
Stick Digging Force (ISO)	166.7	185.5	190.8
General Duty Capacity			
Bucket Digging Force (ISO)	209.7	209.7	261.3
Stick Digging Force (ISO)	165.9	184.6	190.2
Heavy Duty			
Bucket Digging Force (ISO)	209.9	209.9	264.9
Stick Digging Force (ISO)	166.1	184.8	190.8
Heavy Duty – Power			
Bucket Digging Force (ISO)	234.2	234.2	
Stick Digging Force (ISO)	169.0	188.3	
Severe Duty			
Bucket Digging Force (ISO)	209.9	209.9	261.4
Stick Digging Force (ISO)	166.1	184.8	190.2
Extreme Duty			
Bucket Digging Force (ISO)	209.9	209.9	
Stick Digging Force (ISO)	166.1	184.8	

336F L XE Hydraulic Excavator Specifications

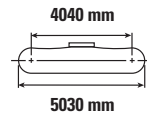
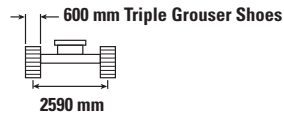
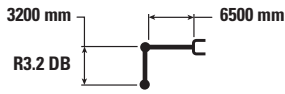
Major Component Weights

	kg
Undercarriage (without tracks)	
Long Undercarriage	8900
Long Narrow Undercarriage	8800
Upper Structure (without front linkage, without counterweight)*	11 200
Counterweight	6100
Boom (includes lines, pins and stick cylinder)	
HD Reach Boom – 6.50 m	4100
Mass Boom – 6.18 m	4200
Stick (includes lines, pins and bucket cylinder)	
HD R3.2 DB	1800
HD R2.8 DB	1800
M2.55 TB	2100
Track Shoes	
850 mm Triple Grouser	5400
700 mm Triple Grouser	4300
600 mm Triple Grouser HD	4700
600 mm Double Grouser	4900
Quick Coupler	600
Buckets	
2.28 m ³	1500
2.41 m ³	2500

*Base machine includes 75 kg operator weight and 90% fuel weight, and undercarriage with center guard.

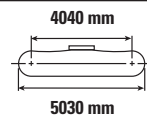
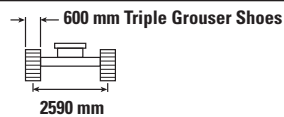
336F L XE Hydraulic Excavator Specifications

336F L XE Reach Boom Lift Capacities – Counterweight: 6.1 mt – without Bucket – Heavy Lift On



Reach (mm)	Unit	3000 mm		4500 mm		6000 mm		7500 mm		9000 mm		mm		
7500 mm	kg							*8400	8050			*7200	*7200	7700
6000 mm	kg							*8550	7950			*7000	6350	8580
4500 mm	kg			*13 000	*13 000	*10 450	*10 450	*9150	7700	*8250	5750	*7050	5600	9130
3000 mm	kg			*16 400	15 400	*12 050	10 200	*10 000	7400	8750	5650	*7300	5250	9410
1500 mm	kg			*18 850	14 400	*13 450	9650	*10 750	7100	8550	5500	*7850	5100	9440
0 mm	kg			*19 600	13 950	*14 300	9300	10 950	6900	8450	5350	8150	5200	9220
-1500 mm	kg	*14 100	*14 100	*19 200	13 850	*14 350	9150	10 850	6750			8750	5550	8750
-3000 mm	kg	*22 200	*22 200	*17 800	13 950	*13 600	9200	*10 500	6800			*9600	6350	7960
-4500 mm	kg	*19 950	*19 950	*15 050	14 300	*11 450	9400					*9650	8100	6750

336F L XE Reach Boom Lift Capacities – Counterweight: 6.1 mt – without Bucket – Heavy Lift On



Reach (mm)	Unit	3000 mm		4500 mm		6000 mm		7500 mm		9000 mm		mm		
7500 mm	kg											*9050	8200	7340
6000 mm	kg					*9700	*9700	*9000	7850			*8750	6700	8250
4500 mm	kg			*13 950	*13 950	*10 950	10 650	*9550	7650			*8750	5900	8820
3000 mm	kg			*17 300	15 050	*12 500	10 050	*10 300	7350	8650	5600	8500	5500	9110
1500 mm	kg			*16 900	14 200	*13 800	9550	*11 000	7050	8550	5450	8350	5350	9140
0 mm	kg			*19 600	13 900	*14 400	9250	10 950	6850			8550	5450	8920
-1500 mm	kg	*13 150	*13 150	*18 850	13 900	*14 250	9150	10 850	6800			9250	5850	8420
-3000 mm	kg	*22 500	*22 500	*17 150	14 050	*13 200	9250	*10 000	6900			*9750	6800	7600
-4500 mm	kg	*17 900	*17 900	*13 950	*13 950	*10 400	9550					*9500	8950	6330



ISO 10567



*Indicates that the load is limited by hydraulic lifting capacity rather than tipping load. The above loads are in compliance with hydraulic excavator lift capacity standard ISO 10567:2007. They do not exceed 87% of hydraulic lifting capacity or 75% of tipping load. Weight of all lifting accessories must be deducted from the above lifting capacities. Lifting capacities are based on the machine standing on a firm, uniform supporting surface. The use of a work tool attachment point to handle/lift objects, could affect the machine lift performance.

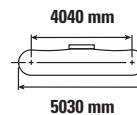
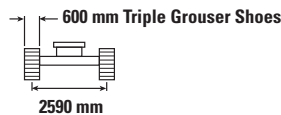
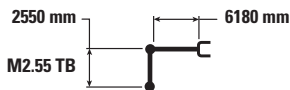
**Not available in ANZ.

Lift capacity stays with ±5% for all available track shoes.

Always refer to the appropriate Operation and Maintenance Manual for specific product information.

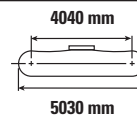
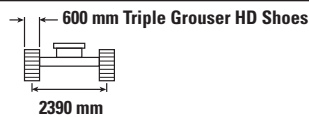
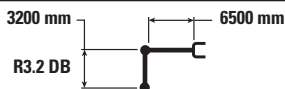
336F L XE Hydraulic Excavator Specifications

336F L XE Mass Boom Lift Capacities – Counterweight: 6.1 mt – without Bucket – Heavy Lift On



Reach (mm)	Unit	3000 mm		4500 mm		6000 mm		7500 mm		5030 mm		mm
7500 mm	kg					*9800	*9800			*8850	*8850	6580
6000 mm	kg					*10 150	*10 150	*9600	7600	*8450	7450	7600
4500 mm	kg			*14 150	*14 150	*11 250	10 500	*9850	7450	*8400	6400	8210
3000 mm	kg			*17 250	14 900	*12 650	9900	*10 500	7150	*8750	5900	8520
1500 mm	kg			*19 150	14 050	*13 800	9400	11 000	6900	9100	5750	8550
0 mm	kg			*19 350	13 750	*14 300	9100	10 850	6750	9350	5900	8310
-1500 mm	kg	*17 900	*17 900	*18 350	13 750	*13 900	9050	*10 750	6700	*10 200	6400	7780
-3000 mm	kg	*21 000	*21 000	*16 200	14 000	*12 350	9200			*10 200	7700	6880
-4500 mm	kg			*11 850	*11 850					*9400	*9400	5430

336F LN XE Reach Boom Lift Capacities – Counterweight: 6.1 mt – without Bucket – Heavy Lift On



Reach (mm)	Unit	3000 mm		4500 mm		6000 mm		7500 mm		9000 mm		mm		
7500 mm	kg							*8400	7550			*7200	7200	7700
6000 mm	kg							*8550	7450			*7000	5950	8580
4500 mm	kg			*13 000	*13 000	*10 450	10 100	*9150	7250	*8250	5400	*7050	5250	9130
3000 mm	kg			*16 400	14 250	*12 050	9500	*10 000	6900	*8850	5250	*7300	4900	9410
1500 mm	kg			*18 850	13 250	*13 450	9000	*10 750	6650	8700	5100	*7850	4750	9440
0 mm	kg			*19 600	12 800	*14 300	8650	11 100	6400	8550	5000	8250	4850	9220
-1500 mm	kg	*14 100	*14 100	*19 200	12 750	*14 350	8500	11 000	6300			8900	5200	8750
-3000 mm	kg	*22 200	*22 200	*17 800	12 850	*13 600	8500	*10 500	6350			*9600	5900	7960
-4500 mm	kg	*19 950	*19 950	*15 050	13 150	*11 450	8750					*9650	7550	6750



ISO 10567



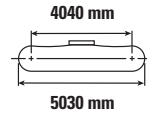
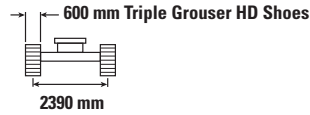
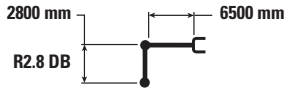
* Indicates that the load is limited by hydraulic lifting capacity rather than tipping load. The above loads are in compliance with hydraulic excavator lift capacity standard ISO 10567:2007. They do not exceed 87% of hydraulic lifting capacity or 75% of tipping load. Weight of all lifting accessories must be deducted from the above lifting capacities. Lifting capacities are based on the machine standing on a firm, uniform supporting surface. The use of a work tool attachment point to handle/lift objects, could affect the machine lift performance.

Lift capacity stays with $\pm 5\%$ for all available track shoes.

Always refer to the appropriate Operation and Maintenance Manual for specific product information.

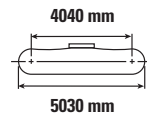
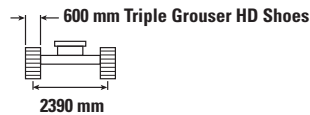
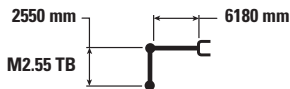
336F L XE Hydraulic Excavator Specifications

336F LN XE Reach Boom Lift Capacities – Counterweight: 6.1 mt – without Bucket – Heavy Lift On



Reach (mm)	Unit	3000 mm		4500 mm		6000 mm		7500 mm		9000 mm		mm		
7500 mm	kg											*9050	7700	7340
6000 mm	kg					*9700	*9700	*9000	7350			*8750	6250	8250
4500 mm	kg			*13 950	*13 950	*10 950	9950	*9550	7150			*8750	5500	8820
3000 mm	kg			*17 300	13 900	*12 500	9400	*10 300	6850	8800	5200	8650	5100	9110
1500 mm	kg			*16 900	13 050	*13 800	8900	*11 000	6600	8650	5100	8450	5000	9140
0 mm	kg			*19 600	12 750	*14 400	8600	11 100	6400			8700	5100	8920
-1500 mm	kg	*13 150	*13 150	*18 850	12 750	*14 250	8500	11 000	6350			9400	5450	8420
-3000 mm	kg	*22 500	*22 500	*17 150	12 950	*13 200	8550	*10 000	6450			*9750	6350	7600
-4500 mm	kg	*17 900	*17 900	*13 950	13 300	*10 400	8900					*9500	8350	6330

336F LN XE Mass Boom Lift Capacities – Counterweight: 6.1 mt – without Bucket – Heavy Lift On



Reach (mm)	Unit	3000 mm		4500 mm		6000 mm		7500 mm		9000 mm		mm
7500 mm	kg					*9800	*9800			*8850	*8850	6580
6000 mm	kg					*10 150	*10 150	*9600	7100	*8450	6950	7600
4500 mm	kg			*14 150	*14 150	*11 250	9800	*9850	6950	*8400	6000	8210
3000 mm	kg			*17 250	13 750	*12 650	9200	*10 500	6700	*8750	5500	8520
1500 mm	kg			*19 150	12 900	*13 800	8750	*11 050	6450	9200	5350	8550
0 mm	kg			*19 350	12 600	*14 300	8450	11 000	6250	9500	5450	8310
-1500 mm	kg	*17 900	*17 900	*18 350	12 600	*13 900	8350	*10 750	6250	*10 200	6000	7780
-3000 mm	kg	*21 000	*21 000	*16 200	12 850	*12 350	8500			*10 200	7150	6880
-4500 mm	kg			*11 850	*11 850					*9400	*9400	5430



ISO 10567



*Indicates that the load is limited by hydraulic lifting capacity rather than tipping load. The above loads are in compliance with hydraulic excavator lift capacity standard ISO 10567:2007. They do not exceed 87% of hydraulic lifting capacity or 75% of tipping load. Weight of all lifting accessories must be deducted from the above lifting capacities. Lifting capacities are based on the machine standing on a firm, uniform supporting surface. The use of a work tool attachment point to handle/lift objects, could affect the machine lift performance.

**Not available in ANZ.

Lift capacity stays with ±5% for all available track shoes.

Always refer to the appropriate Operation and Maintenance Manual for specific product information.

336F L XE Hydraulic Excavator Specifications

Bucket Specifications and Compatibility

Tracks						336F L XE – 600 mm TG			336F LN XE – 600 mm TG		
Counterweight						6.1 mt			6.1 mt		
	Linkage	Width	Capacity	Weight	Fill	Reach Boom HD		ME Boom	Reach Boom HD		ME Boom
		mm	m ³	kg	%	R2.8 DB	R3.2 DB	M2.55 TB	R2.8 DB	R3.2 DB	M2.55 TB
Without Quick Coupler											
General Duty (GD)	DB	1350	1.64	1173	100	●	●		●	●	
	DB	1650	2.11	1352	100	●	●		⊙	⊙	
	DB	1800	2.35	1453	100	⊙	⊙		⊖	⊖	
	TB	1500	2.14	1872	100			●			⊙
	TB	1650	2.41	2027	100			⊙			⊖
Heavy Duty (HD)	DB	1350	1.64	1481	100	●	●		●	●	
	DB	1500	1.88	1600	100	●	●		●	⊙	
	DB	1650	2.12	1730	100	⊙	⊙		⊙	⊖	
	TB	1650	2.41	2210	100			⊙			⊖
Severe Duty (SD)	DB	1650	2.14	1827	90	●	⊙		⊙	⊙	
	TB	1350	1.87	2065	90			●			●
	TB	1650	2.41	2385	90			⊙			⊖
Maximum load pin-on (payload + bucket)					kg	5845	5604	6596	5420	5199	6094
With Pin Grabber Coupler											
General Duty (GD)	DB	1350	1.64	1173	100	●	●		●	●	
	DB	1650	2.11	1352	100	⊙	⊙		⊖	⊖	
	DB	1800	2.35	1453	100	⊖	⊖		⊖	○	
	TB	1500	2.14	1872	100			⊙			⊙
	TB	1650	2.41	2027	100			⊖			⊖
Heavy Duty (HD)	DB	1350	1.64	1481	100	●	●		●	⊙	
	DB	1500	1.88	1600	100	⊙	⊙		⊙	⊖	
	DB	1650	2.12	1730	100	⊖	⊖		⊖	○	
	TB	1650	2.41	2210	100			⊖			○
Severe Duty (SD)	DB	1650	2.15	1827	90	⊙	⊖		⊖	⊖	
	TB	1350	1.87	2065	90			●			●
	TB	1650	2.41	2385	90			⊖			⊖
Maximum load pin-on (payload + bucket)					kg	5287	5046	6037	4862	4641	5535

The above loads are in compliance with hydraulic excavator standard EN474, they do not exceed 87% of hydraulic lifting capacity or 75% of tipping capacity with front linkage fully extended at ground line with bucket curled.

Capacity based on ISO 7451.

Bucket weight with General Duty tips.

Maximum Material Density:

- 2100 kg/m³
- ⊙ 1800 kg/m³
- ⊖ 1500 kg/m³
- 1200 kg/m³

Caterpillar recommends using appropriate work tools to maximize the value customers receive from our products. Use of work tools, including buckets, which are outside of Caterpillar's recommendations or specifications for weight, dimensions, flows, pressures, etc. may result in less-than-optimal performance, including but not limited to reductions in production, stability, reliability, and component durability. Improper use of a work tool resulting in sweeping, prying, twisting and/or catching of heavy loads will reduce the life of the boom and stick.

336F L XE Hydraulic Excavator Specifications

Bucket Specifications and Compatibility

Tracks						336F L XE – 600 mm TG			336F LN XE – 600 mm TG		
Counterweight						6.1 mt			6.1 mt		
	Linkage	Width	Capacity	Weight	Fill	Reach Boom HD		ME Boom	Reach Boom HD		ME Boom
		mm	m ³	kg	%	R2.8 DB	R3.2 DB	M2.55 TB	R2.8 DB	R3.2 DB	M2.55 TB
With Quick Coupler (CW45, CW45s)											
General Duty (GD)	DB	1050	1.17	986	100%	●	●		●	●	
	DB	1200	1.40	1064	100%	●	●		●	●	
	DB	1350	1.64	1143	100%	●	●		●	●	
	DB	1500	1.87	1245	100%	●	●		⊙	⊙	
	DB	1650	2.11	1324	100%	⊙	⊙		⊖	⊖	
Heavy Duty (HD)	DB	1350	1.64	1417	100%	●	●		●	●	
	DB	1500	1.88	1514	100%	●	⊙		⊙	⊖	
	DB	1650	2.12	1647	100%	⊙	⊖		⊖	⊖	
	TB	1650	2.41	2117	100%			⊖			⊖
Severe Duty (SD)	DB	1050	1.17	1272	90%	●	●		●	●	
	DB	1650	2.15	1802	90%	⊙	⊙		⊖	⊖	
	TB	1350	1.87	1974	90%			●			●
	TB	1650	2.41	2295	90%			⊙			⊖
Maximum load with coupler (payload + bucket)					kg	5355	5114	6106	4930	4709	5604

The above loads are in compliance with hydraulic excavator standard EN474, they do not exceed 87% of hydraulic lifting capacity or 75% of tipping capacity with front linkage fully extended at ground line with bucket curled.

Capacity based on ISO 7451.

Bucket weight with General Duty tips.

Maximum Material Density:

- 2100 kg/m³
- ⊙ 1800 kg/m³
- ⊖ 1500 kg/m³
- 1200 kg/m³

Caterpillar recommends using appropriate work tools to maximize the value customers receive from our products. Use of work tools, including buckets, which are outside of Caterpillar's recommendations or specifications for weight, dimensions, flows, pressures, etc. may result in less-than-optimal performance, including but not limited to reductions in production, stability, reliability, and component durability. Improper use of a work tool resulting in sweeping, prying, twisting and/or catching of heavy loads will reduce the life of the boom and stick.

336F L XE Hydraulic Excavator Specifications

Work Tool Offering Guide*

Boom Type	Reach Boom HD		Mass Boom
Stick Size	3.2 HD	2.8 HD	2.55
Counterweight	Heavy	Heavy	Heavy
Hydraulic Hammer	H140Es H160Es	H140Es H160Es	H140Es H160Es
Multi-Processor	MP324 CC Jaw MP324 D Jaw MP324 P Jaw MP324 S Jaw MP324 TS Jaw MP324 U Jaw MP30 CC Jaw MP30 CR Jaw MP30 PP Jaw MP30 PS Jaw MP30 S Jaw MP30 TS Jaw	MP324 CC Jaw MP324 D Jaw MP324 P Jaw MP324 S Jaw MP324 TS Jaw MP324 U Jaw MP30 CC Jaw MP30 CR Jaw MP30 PP Jaw MP30 PS Jaw MP30 S Jaw MP30 TS Jaw	MP30 CC Jaw MP30 CR Jaw MP30 PP Jaw MP30 PS Jaw MP30 S Jaw MP30 TS Jaw
Pulverizer	P225 P235	P225 P235	P235
Crusher	P325 P335	P325 P335	P335
Demolition and Sorting Grapple	G325B-D/R G330	G325B-D/R G330	G330
Scrap and Demolition Shear	S325B S340B S365C	S325B S340B S365C	S340B S365C
Compactor (Vibratory Plate)	CVP110	CVP110	CVP110
Orange Peel Grapple			
Dedicated Quick Coupler	CW-45 CW-45S		

These work tools are available for the 336F L XE.
Consult your Cat dealer for proper match.

*Matches are dependent on excavator configurations. Consult your Cat dealer to determine what is offered in your area and for proper work tool match.

Note: Demolition and Sorting Grapple: D–Demolition shells, R–Recycling shells

Standard Equipment

Standard equipment may vary. Consult your Cat dealer for details.

CAB

- Parallel wiper and washer
- Mirrors
- Pressurized operator station with positive filtration
- Sliding upper door window (left-hand cab door)
- Openable skylight
- Sun screen
- Interior:
 - Glass-breaking safety hammer
 - Coat hook
 - Beverage holder
 - Literature holder
 - Interior lighting
 - AM/FM radio mounting
 - Two 12V stereo speakers
 - Storage shelf suitable for lunch or toolbox
 - Power supply with 12V, two power outlets (10 amp)
 - Thumb wheel modulation joystick for use with combined auxiliary control
 - Air conditioner, heater and defroster with climate control
- Seat:
 - Adjustable high-back, heated and ventilated seat with air suspension
 - Seat belt, 51 mm
 - Adjustable armrest
 - Height adjustable joystick consoles
 - Neutral lever (lock out) for all controls
 - Travel control pedals with removable hand levers
 - Capability of installing two additional pedals
 - Two speed travel
 - Floor mat, washable
- Monitor:
 - Clock
 - Video ready
 - Color LCD display with warning, filter/fluid change, and working hour information
 - Language display (full graphic and full color display)
 - Machine condition, error code and tool mode setting information
 - Start-up level check for engine oil, engine coolant and hydraulic oil
 - Warning, filter/fluid change and working hour information
 - Fuel consumption meter

ELECTRICAL

- 80 amp alternator
- Circuit breaker
- Battery, standard

ENGINE

- Cat C9.3 ACERT diesel engine
- Meets Stage IV emission standards
- 2300 m altitude capability with no derate
- Biodiesel capable, up to B20
- Automatic engine speed control
- Electric priming pump
- Water separator in fuel line including water level sensor and indicator
- Economy and standard power modes
- Air cleaner
- Radial seal air filter
- Side-by-side cooling system
- Primary filter with water separator and water separator indicator switch
- Starting kit, cold weather, –18° C
- Fuel differential indicator switch in fuel line
- 2×4 micron main filters and 1×10 micron primary filter in fuel line
- Water level indicator for water separator

HYDRAULIC SYSTEM

- Boom and stick lowering control devices
- Automatic swing parking brake
- High-performance hydraulic return filter
- Regeneration circuit for boom and stick
- Capability of installing additional auxiliary circuits
- Bio oil capable

LIGHTS

- Cab and boom lights with time delay
- Exterior lights integrated into storage box

UNDERCARRIAGE/UPPERFRAME

- Grease Lubricated Track GLT2, resin seal
- Heavy duty track roller and idler
- Heavy duty bottom guard
- Heavy duty travel motor guard
- Swivel guard
- Towing eye on base frame
- Counterweight, 6100 kg
- Long or Long Narrow undercarriage

SAFETY AND SECURITY

- Cat one key security system
- Door locks
- Cap locks on fuel and hydraulic tanks
- Lockable external tool/storage box
- Signaling/warning horn
- Secondary engine shutoff switch
- Mirrors
- Rear window for emergency exit
- Rear vision camera
- Capability to connect a beacon
- Bolt on FOGS capability

INTEGRATED TECHNOLOGIES

- Product Link
- Rear vision camera
- Cat Grade Control 2D
- Cat Production Measurement

Optional Equipment

Optional equipment may vary. Consult your Cat dealer for details.

FRONT LINKAGE

- Heavy Duty Reach Boom 6.5 m:
 - HD R3.2 DB
 - HD R2.8 DB
 - DB-family bucket linkage (with lifting eye)
- Mass boom 6.18 m:
 - M2.55 TB
 - TB-family bucket linkage (with lifting eye)
- Quick couplers: CW dedicated

TRACK

- Long undercarriage:
 - 850 mm triple grouser
 - 700 mm triple grouser
 - 600 mm triple grouser HD
 - 600 mm double grouser
- Long Narrow undercarriage:
 - 600 mm triple grouser HD

GUARDS

- FOGS (Falling Object Guard System) including overhead and windshield guards
- Front windshield guard
- Track guiding guards:
 - Full length
 - Center

CAB

- Cab front rain protector
- Windshield:
 - 70-30 split, sliding, removable lower windshield with in cab storage bracket
 - One-piece, fixed
- Straight travel pedal

HYDRAULIC SYSTEM

- SmartBoom
- HP hydraulic lines for boom and stick
- MP hydraulic lines for boom and stick
- QC hydraulic lines for boom and stick
- QC control
- Bio oil

ELECTRICAL

- Cold weather starting package
- Electric refueling pump with auto shut off

ENGINE

- Quick drains, engine and hydraulic oil (QuickEvac)

SECURITY

- Cat MSS (anti-theft device)

INTEGRATED TECHNOLOGIES

- Cat Grade 3D

For more complete information on Cat products, dealer services, and industry solutions, visit us on the web at www.cat.com

© 2017 Caterpillar
All rights reserved

Materials and specifications are subject to change without notice. Featured machines in photos may include additional equipment. See your Cat dealer for available options.

CAT, CATERPILLAR, SAFETY.CAT.COM, their respective logos, "Caterpillar Yellow" and the "Power Edge" trade dress, as well as corporate and product identity used herein, are trademarks of Caterpillar and may not be used without permission.

VisionLink is a trademark of Trimble Navigation Limited, registered in the United States and in other countries.

AEHQ7889-01
Replaces AEHQ7889
(Eur)

