

D6T

Track-Type Tractor



Engine

| | | |
|--------------------------|-----------------------|--------|
| Engine Model | Cat® C9.3 ACERT™ | |
| Build Number | 19 | |
| Emissions | U.S. EPA Tier 4 Final | |
| Engine Power – 1,200 rpm | | |
| SAE J1995 (Gross) | 189 kW | 253 hp |
| ISO 14396 | 187 kW | 251 hp |
| Net Power – 2,200 rpm | | |
| ISO 9249/SAE J1349 | 161 kW | 215 hp |

Weight

| | | |
|-------------------|-----------|-----------|
| Operating Weights | | |
| XL A | 21 703 kg | 47,846 lb |
| XL SU | 21 382 kg | 47,138 lb |
| XL VPAT | 24 060 kg | 53,042 lb |
| XW A | 22 588 kg | 49,797 lb |
| XW SU | 22 185 kg | 48,909 lb |
| XW VPAT | 24 515 kg | 54,045 lb |
| LGP S | 23 299 kg | 51,385 lb |
| LGP A | 24 417 kg | 53,829 lb |
| LGP VPAT | 24 733 kg | 54,526 lb |

D6T Features

Performance

New fully automatic four-speed transmission, with lock-up clutch torque divider, gives you power, fuel efficiency and ease of operation without sacrificing productivity.

Fuel Efficiency

Full-time Auto Shift keeps you running at top efficiency, saving you up to 30 percent on fuel without sacrificing performance.*

Cat Connect Technologies

Standard GRADE for Dozers technologies like Cat GRADE with Slope Assist help you get jobs done faster and more accurately. Optional GRADE technologies, like Cat GRADE with 3D and Cat AccuGrade™, allow you to choose features that match your job site needs for scalability, capability and budget.

Versatility

The D6T gives you the pushing power you want for heavy dozing applications and the fine control you need for finish grading – all in one easy-to-transport machine.

**Compared to previous model.*



Contents

| | |
|--|----|
| Power and Efficiency | 3 |
| Operator Environment..... | 4 |
| Equipped for the Job | 5 |
| Integrated Technologies..... | 6 |
| Emissions Technology | 8 |
| Safety | 8 |
| Special Arrangements | 9 |
| Serviceability and Customer Support..... | 10 |
| Specifications..... | 11 |
| Standard Equipment..... | 17 |
| Optional Equipment..... | 18 |

The new Cat D6T dozer makes high efficiency dozing as easy as driving your pickup truck. A smooth-shifting, fully automatic four-speed Cat transmission continuously optimizes the power train for the application. You save fuel and operator effort, without sacrificing durability, power or productivity. Work smarter too, with a full range of Cat Connect GRADE technology features to fit your job site needs.

Power and Efficiency

More work, less fuel

Smooth and Powerful

- New fully automatic four-speed transmission, with lock-up clutch torque divider, continuously optimizes gear and engine speed for the application without added operator input.
- Added gear between first and second, and seamless lock-up clutch engagement, for exceptionally smooth shifting.
- Maintains power to the ground through load changes for an aggressive feel in the dirt.
- Up to 2.5 percent more productive – move more material per hour.*

More Fuel Efficient

- Full-time Auto Shift for significantly better fuel efficiency with less operator effort – without sacrificing performance.
- Up to 20 percent more fuel efficient* – as much as 30 percent better in lighter load finish grading applications.
- Sustainable: fuel savings reduces CO₂ production by an average of approximately 16.6 metric tons (17.7 tons) per year.

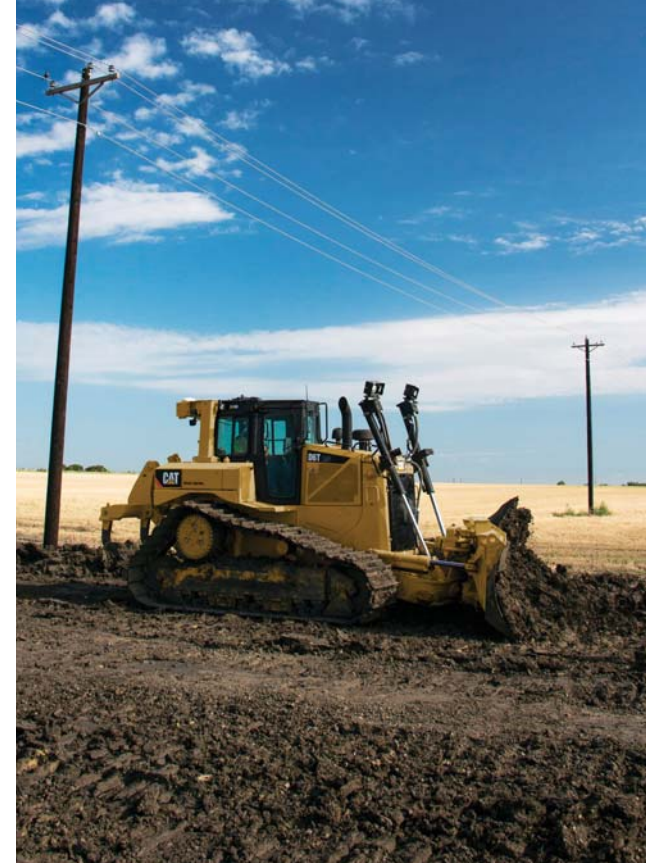
Agile and Responsive

- Faster implement response*, especially with GRADE technologies.
- Agile turning and faster cycle times, even in softer conditions, with Differential Steering.
- Maximum blade power with load sensing hydraulics.

**Compared to previous model.*

Why so Easy and Efficient?

The D6T uses a fully automatic transmission and lock-up clutch torque divider to optimize machine efficiency for the job. Simply set the ground speed and go to work. The tractor will automatically choose the optimal gear and engine speed. When more torque is needed for cutting, it automatically downshifts, the lock-up clutch disengages and engine speed increases. When the blade load decreases, there is no need for the operator to upshift – ground speed will rise, the lock-up clutch will engage and the transmission will automatically upshift to reduce engine speed and minimize fuel consumption.



Operator Environment

Comfort and productivity



Operators enjoy comforts like quiet cab, heated/ventilated seat option and auxiliary power port. The main display and grade control display are placed directly in front of the operator, while still allowing excellent visibility over the top of the hood.

New color Liquid Crystal Display (LCD) is glare resistant and easy to read day or night.

- Monitor machine operation.
- Access machine/implement settings menus.
- View machine diagnostics.
- Slope Assist control screen.
- Displays real-time machine slope and mainfall.
- Enables coded start and multiple operator profiles.
- Rear vision camera screen (when equipped).



Machine Controls

- Tiller style handle for precise turning and easy directional control.
- Change ground speeds easily – in large (half gear) or small (one-tenth gear) increments – with detented thumb roller.
- Improved blade feedback with updated implement joystick.
- Low effort electro-hydraulics give you precise implement control with selectable implement response levels – fine, medium, coarse.
- Variable throttle control dial lets you use preset engine speeds.
- Bi-directional shift allows you to automatically select the desired forward/reverse speeds, or customize machine speeds for operator preference.





Equipped for the Job

Optimize your machine

Undercarriage

Caterpillar elevated sprocket design helps protect major components from harsh impacts and provides a modular design that is convenient to service. Choose Heavy Duty undercarriage for aggressive applications like land clearing, side-slopes or rocky terrain. Or, choose SystemOne™ undercarriage that is designed to work and wear as a system for longer life and lower costs in many applications. A broad choice of track shoe designs and widths help you further optimize your machine for performance and longer life.

Blades

Semi-Universal, Straight and Angle blades are designed with a strong box section to stand up to the most severe applications. Heavy moldboard construction, hardened bolt-on cutting edges and end bits add strength and durability.

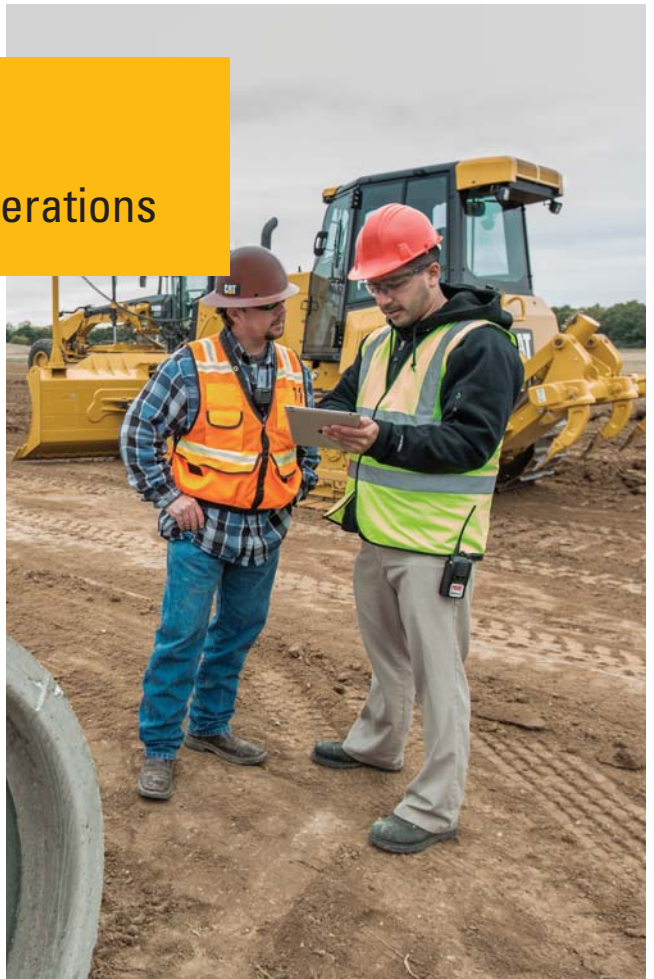
The Variable Pitch Angle Tilt (VPAT) blade allows you to hydraulically adjust lift, angle and tilt for precise results. The VPAT blade is wider to take on a variety of applications so you can use your D6T for spreading material, finish grading, side casting, V-ditching and backfilling. The VPAT blade can also be angled for easy shipping.

Rear Implements

A new high-lift, multi-shank ripper offers more ground clearance and better penetration. Or outfit your dozer with a winch, drawbar, or rear counterweight. Ask your Cat dealer for available options to help you optimize your machine for the work you do.

Integrated Technologies

Monitor, manage and enhance job site operations



GRADE for Dozers

Cat Connect GRADE technologies help you hit target grade faster and more accurately. Finish jobs in fewer passes, and with less operator effort, saving you time and helping you increase profit.

Cat GRADE with Slope Assist (■) helps operators by automatically maintaining pre-established blade position. The system saves time, increases finish quality and reduces operator input. Experienced operators can work more productively and less experienced operators can achieve better quality results more quickly.

Cat Slope Indicate (■) displays machine cross-slope and fore/aft orientation on the primary monitor, helping operators work more accurately on slopes.

Cat Stable Blade (■) complements the operator's blade-control input for attaining finish grades quicker with less effort.

Cat GRADE with 3D (●) is a factory integrated grade control system that enables operators to improve grading efficiency, accuracy, and productivity in both production dozing and fine-grading applications. The integrated design positions antennas on the cab roof, eliminating conventional blade-mounted masts and related cables. The AccuGrade Ready Option (ARO) is part of the package for added versatility, and AutoCarry™ is included to further boost productivity.

Cat AccuGrade (●) is a dealer-installed aftermarket grade-control system that provides increased grading versatility and the ability to scale capacity to changing needs, providing a choice of lasers for 2D flat-plane and slope work, Global Navigation Satellite System (GNSS) control for complex 3D cuts and contours, and/or systems using a Universal Total Station (UTS) for fine and finish grading.

AccuGrade Ready Option (ARO) (●) allows you to easily install or upgrade to AccuGrade 2D and 3D grade-control systems to add versatility and resale value to your machine.

(■) = Standard

(●) = Optional





LINK Technologies

LINK technologies provide wireless capability to machines enabling two-way transfer of information collected by on-board sensors, control modules, and other Cat Connect technologies using off-board apps, such as our VisionLink® software.

Product Link™/VisionLink

Product Link takes the guesswork out of equipment management. Track location, hours, fuel usage, productivity, idle time, and diagnostic codes through the online VisionLink interface. Manage your fleet in real time so you can maximize efficiency, improve productivity, and lower operating costs.

Cat Connect makes smart use of technology and services to improve your job site efficiency. Using the data from technology equipped machines, you'll get more information and insight into your equipment and operations than ever before.

Cat Connect services are also available from your dealership including:



EQUIPMENT
MANAGEMENT

Equipment Management – increase uptime and reduce operating costs.



PRODUCTIVITY

Productivity – monitor production and manage job site efficiency.



SAFETY

Safety – enhance job site awareness to keep your people and equipment safe.

Emissions Technology

Proven, integrated solutions



Emissions reduction technology is designed to be transparent – regeneration runs automatically in the background while you work. Diesel Exhaust Fluid (DEF) can be conveniently refilled when you refuel.

When the machine is turned off, a pump will automatically purge the DEF lines to help prevent the fluid from freezing in the lines and pump. A symbol on the dash and a light/symbol on the Ground Level Service Center indicate when the purge is complete and that it is safe to turn off the electrical disconnect.

If engine/aftertreatment temperatures are high, Delayed Engine Shutdown will activate automatically to cool the machine and then purge the lines. For complete aftertreatment information, please refer to the Operation and Maintenance Manual.

Safety

Designed with protection in mind

- Well-appointed cabs with good visibility help operators stay focused and aware.
- Standard Operator Presence detection system allows the machine to idle when the operator is not seated, but locks out the power train and front implements to avoid unintentional movement.
- Optional rear vision camera enhances visibility behind the machine and is integrated into dash display.
- Convenient steps and handles help you get on and off the tractor with greater ease.
- Optional premium lighting package adds access lighting with a ground level switch.



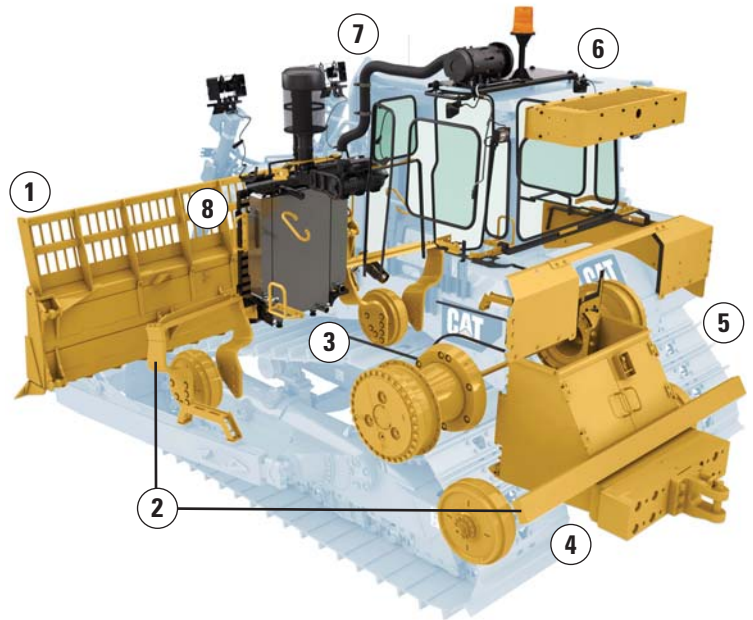
Special Arrangements

Purpose-built for performance

D6T WH Waste Handler

Whether building or closing cells, pushing trash or spreading cover, Cat Waste Handlers are designed and built from the frame up to take on the unique challenges of landfill work. Specialized guarding and seals throughout help protect the machine from impacts, wrapping and airborne debris.

- 1 Landfill blade increases capacity and helps prevent material from spilling over on to the radiator.
- 2 Front and rear striker bars help protect machine from debris impacts.
- 3 Clamshell guards on final drives and idler/final drive seals help prevent wire wrap and keep debris from wrapping around Duo-Cone™ seals.
- 4 Bottom guard, chassis and tilt cylinder guards, and guarding over the fuel tank and battery box, provide added protection to major components.
- 5 Center-hole track shoes help eject debris from the tracks.
- 6 Specialized air handling features help deliver cleaner air to the machine and to the cab.
- 7 Lights mounted up and away from main debris area for protection, while providing plenty of light on the work area.
- 8 Cooling system designed for high debris environments and easy access for cleanout.



D6T Forestry Arrangement

Put the power and ruggedness of the D6T to work in land clearing or forestry applications.

- Optional Sweeps help protect the cab, top and sides of the machine.
- Screens give added impact protection to cab windows.
- Additional guarding helps protect the underside of the machine from stumps and other heavy debris.
- Cooling system designed for high debris environments and easy access for cleanout.

Serviceability and Customer Support

When uptime counts



Ease of Service

Like all Cat machines, the D6T is designed to help you get routine service done quickly and efficiently so you can get to work.

- Increased air cleaner size for better service life, improved air filter life and lower maintenance cost.
- Large engine compartment doors and a lower panel that can be removed without tools gives you easy access to internal components and routine service points.
- Heavy-duty hinged radiator grill doors have a bolt-on design so you can get to the fan and front side of the cooling package.
- Optional high speed oil change attachment can make servicing even faster.
- Ground Level Service Center gives you quick, easy access to the hour meter, battery disconnect, secondary engine shutdown, DEF purge indicator and optional lighting switches.

Cooling Capability

- Auto Shift optimizes performance to help reduce overheating in tough or hot conditions.
- Single plane design makes cleanout easier.
- In cooler conditions, hydraulic demand fan can reduce speed to conserve power, save fuel and decrease sound levels.
- Optional reversing fan available for high debris conditions.

D6T Track-Type Tractor Specifications

Engine

| | | |
|--------------------------|-----------------------|---------------------|
| Engine Model | Cat C9.3 ACERT | |
| Emissions | U.S. EPA Tier 4 Final | |
| Build Number | 19 | |
| Engine Power – 1,200 rpm | | |
| SAE J1995 (Gross) | 189 kW | 253 hp |
| ISO 14396 | 187 kW | 251 hp |
| Net Power – 2,200 rpm | | |
| ISO 9249/SAE J1349 | 161 kW | 215 hp |
| Bore | 115 mm | 4.5 in |
| Stroke | 149 mm | 5.9 in |
| Displacement | 9.3 L | 567 in ³ |

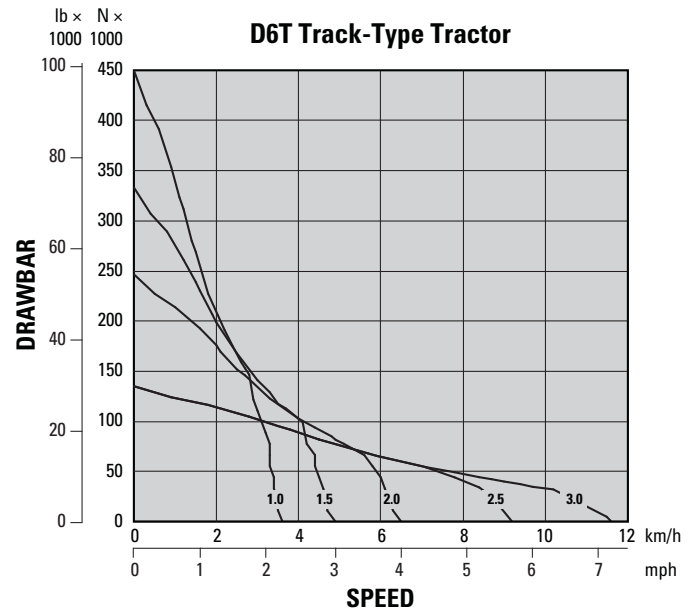
- Net power advertised is the power available at the engine flywheel when the engine is equipped with a fan, air cleaner, muffler and alternator.
- No deratings required up to 2286 m (7,500 ft) automatic derating occurs.
- All non-road Tier 4 diesel engines are required to use only Ultra Low Sulfur Diesel (ULSD) fuels containing 15 ppm (mg/kg) sulfur or less. Biodiesel blends up to B20 (20% blend by volume) are acceptable when blended with 15 ppm (mg/kg) sulfur or less ULSD. B20 should meet ASTM D7467 specification (biodiesel blend stock should meet Cat biodiesel spec, ASTM D6751 or EN 14214). Cat DEO-ULS™ or oils that meet the Cat ECF-3, API CJ-4, and ACEA E9 specification are required. Consult your OMM for further machine specific fuel recommendations.
- Diesel Exhaust Fluid (DEF) used in Cat Selective Catalytic Reduction (SCR) systems must meet the requirements outlined in the International Organization for Standardization (ISO) standard 22241.

Service Refill Capacities

| | | |
|-------------------------|--------|----------|
| Fuel Tank | 368 L | 97.2 gal |
| DEF Tank | 17.1 L | 4.5 gal |
| Cooling System | 46 L | 12.2 gal |
| Engine Crankcase | 24.6 L | 6.5 gal |
| Power Train | 148 L | 39.1 gal |
| Final Drives (each) | 13.5 L | 3.6 gal |
| Roller Frames (each) | 25 L | 6.6 gal |
| Pivot Shaft Compartment | 5 L | 1.3 gal |
| Hydraulic Tank | 62.5 L | 16.5 gal |

Transmission

| | | |
|--------------|------------|------------|
| 1.0 Forward | 3.61 km/h | 2.24 mph |
| 1.5 Forward | 4.86 km/h | 3.02 mph |
| 2.0 Forward | 6.53 km/h | 4.06 mph |
| 2.5 Forward | 9.21 km/h | 5.72 mph |
| 3.0 Forward | 11.61 km/h | 7.21 mph |
| 1.0 Reverse | 3.61 km/h | 2.24 mph |
| 1.5 Reverse | 4.86 km/h | 3.02 mph |
| 2.0 Reverse | 6.45 km/h | 4.01 mph |
| 2.5 Reverse | 8.68 km/h | 5.39 mph |
| 3.0 Reverse | 11.66 km/h | 7.24 mph |
| Drawbar Pull | | |
| 1.0 Forward | 447 kN | 100,489 lb |
| 1.5 Forward | 331 kN | 74,411 lb |
| 2.0 Forward | 245 kN | 55,078 lb |
| 2.5 Forward | 134 kN | 30,124 lb |
| 3.0 Forward | 134 kN | 30,124 lb |



D6T Track-Type Tractor Specifications

Hydraulic Controls – Pressures

| Maximum Operating Pressures | | |
|-----------------------------|------------|-----------|
| Non-VPAT | 19 300 kPa | 2,800 psi |
| VPAT | 21 550 kPa | 3,125 psi |
| Steering | 40 000 kPa | 5,800 psi |
| Relief Pressures | | |
| Non-VPAT | 21 700 kPa | 3,150 psi |
| VPAT | 24 400 kPa | 3,540 psi |

Hydraulic Controls – Pumps

| Pump Output | | |
|----------------------------|-----------|------------|
| Fan | 93 L/min | 25 gal/min |
| Implement | 205 L/min | 54 gal/min |
| Steering | 195 L/min | 52 gal/min |
| Lift Cylinder Flow | 205 L/min | 54 gal/min |
| Tilt Cylinder Flow | 110 L/min | 29 gal/min |
| Ripper Cylinder Flow | 205 L/min | 54 gal/min |
| Angle Cylinder Flow – VPAT | 190 L/min | 50 gal/min |

Ripper

| Type | Fixed Parallelogram | |
|---------------------------|---------------------|--------------------|
| Ramp Angle | 31 degrees | |
| Pocket Spacing | 1000 mm | 39.4 in |
| Shank Gauge | 2000 mm | 78.8 in |
| Shank Section | 74 mm × 175 mm | 2.9 in × 6.9 in |
| Number of Pockets | 3 | |
| Overall Beam Width | 2190 mm | 86 in |
| Beam Cross Section | 219 mm × 304 mm | 8.8 in × 12 in |
| Maximum Clearance | | |
| Raised (under tip) | 642 mm | 25.3 in |
| Maximum Penetration | 579 mm | 22.8 in |
| Maximum Penetration Force | 73.2 kN | 16,460 lb |
| Pryout Force | 93.2 kN | 20,950 lb |
| Weight | | |
| With One Shank | 1564 kg | 3,448 lb |
| Each Additional Shank | 73 kg | 161 lb |

- All dimensions are for XL-SU machine with HD undercarriage.

Weights

| Operating Weights | | |
|-------------------|-----------|-----------|
| XL A | 21 703 kg | 47,846 lb |
| XL SU | 21 382 kg | 47,138 lb |
| XL VPAT | 24 060 kg | 53,042 lb |
| XW A | 22 588 kg | 49,797 lb |
| XW SU | 22 185 kg | 48,909 lb |
| XW VPAT | 24 515 kg | 54,045 lb |
| LGP S | 23 299 kg | 51,385 lb |
| LGP A | 24 417 kg | 53,829 lb |
| LGP VPAT | 24 733 kg | 54,526 lb |

| Shipping Weights | | |
|------------------|-----------|-----------|
| XL A/SU | 18 150 kg | 40,014 lb |
| XL VPAT | 21 791 kg | 48,040 lb |
| XW A/SU | 18 811 kg | 41,471 lb |
| XW VPAT | 21 190 kg | 46,715 lb |
| LGP S/A | 20 203 kg | 44,539 lb |
| LGP VPAT | 22 406 kg | 49,396 lb |

- Operating weight includes blade, lubricants, coolant, full fuel tank, standard track, ROPS/FOPS cab, drawbar and operator.
- Shipping weight includes blade lift cylinders (C-frame for VPAT), lubricants, coolant, ROPS/FOPS cab, standard track and 10% fuel.

Weights – Waste Handler

| Operating Weights | | |
|-------------------|-----------|-----------|
| XL SU | 23 429 kg | 51,652 lb |
| XW SU | 24 232 kg | 53,423 lb |
| XW VPAT | 26 636 kg | 58,723 lb |
| LGP S | 25 430 kg | 56,063 lb |
| LGP VPAT | 26 855 kg | 59,204 lb |
| Shipping Weights | | |
| XL SU | 19 952 kg | 43,987 lb |
| XW SU | 20 581 kg | 45,373 lb |
| XW VPAT | 24 309 kg | 53,593 lb |
| LGP S | 22 081 kg | 48,681 lb |
| LGP VPAT | 24 528 kg | 54,074 lb |

- Operating weight includes standard operating weight plus waste blade for S/SU machines, fuel tank guards, guarded final drives, waste undercarriage, chassis bars, striker box, and two additional counterweights.

D6T Track-Type Tractor Specifications

Blades

| | 6 SU – XL | | 6A – XL | | 6 VPAT – XL | |
|------------------|---------------------|----------------------|---------------------|----------------------|---------------------|----------------------|
| Capacity | 5.55 m ³ | 7.26 yd ³ | 3.95 m ³ | 5.17 yd ³ | 4.64 m ³ | 6.07 yd ³ |
| Width | 3261 mm | 10.7 ft | 4160 mm | 13.7 ft | 3880 mm | 12.7 ft |
| Height | 1407 mm | 4.6 ft | 1151 mm | 3.8 ft | 1294 mm | 4.2 ft |
| Digging Depth | 501 mm | 19.7 in | 555 mm | 21.8 in | 792 mm | 31.2 in |
| Ground Clearance | 1180 mm | 46.5 in | 1112 mm | 43.8 in | 1057 mm | 41.6 in |
| Maximum Tilt | 812 mm | 32.0 in | 424 mm | 16.7 in | 410 mm | 16.1 in |
| Weight | 1338 kg | 2,950 lb | 1195 kg | 2,634 lb | 1670 kg | 3,681 lb |

| | 6 SU – XW | | 6A – XW | | 6 VPAT – XW | |
|------------------|---------------------|----------------------|---------------------|----------------------|---------------------|----------------------|
| Capacity | 5.64 m ³ | 7.38 yd ³ | 4.35 m ³ | 5.69 yd ³ | 5.02 m ³ | 6.57 yd ³ |
| Width | 3562 mm | 11.7 ft | 4520 mm | 14.8 ft | 4160 mm | 13.7 ft |
| Height | 1407 mm | 4.6 ft | 1153 mm | 3.8 ft | 1294 mm | 4.2 ft |
| Digging Depth | 502 mm | 19.7 in | 541 mm | 21.3 in | 743 mm | 29.3 in |
| Ground Clearance | 1180 mm | 46.5 in | 1139 mm | 44.8 in | 1102 mm | 43.4 in |
| Maximum Tilt | 791 mm | 31.2 in | 424 mm | 16.7 in | 442 mm | 17.4 in |
| Weight | 1415 kg | 3,120 lb | 1300 kg | 2,865 lb | 1764 kg | 3,888 lb |

| | 6S – LGP | | 6A – LGP | | 6 VPAT – LGP | |
|------------------|---------------------|----------------------|---------------------|----------------------|---------------------|----------------------|
| Capacity | 3.79 m ³ | 4.96 yd ³ | 4.94 m ³ | 6.46 yd ³ | 5.02 m ³ | 6.57 yd ³ |
| Width | 4063 mm | 13.3 ft | 5072 mm | 16.6 ft | 4160 mm | 13.7 ft |
| Height | 1108 mm | 3.6 ft | 1150 mm | 3.8 ft | 1294 mm | 4.2 ft |
| Digging Depth | 590 mm | 23.2 in | 853 mm | 33.6 in | 743 mm | 29.3 in |
| Ground Clearance | 1094 mm | 43.1 in | 1004 mm | 39.5 in | 1102 mm | 43.4 in |
| Maximum Tilt | 735 mm | 28.9 in | 618 mm | 24.3 in | 442 mm | 17.4 in |
| Weight | 1189 kg | 2,622 lb | 1457 kg | 3,211 lb | 1764 kg | 3,888 lb |

| | 6 SU – XL Landfill | | 6 SU – XW Landfill | | 6S LGP Landfill | |
|------------------|----------------------|----------------------|----------------------|-----------------------|---------------------|-----------------------|
| Capacity | 11.01 m ³ | 14.4 yd ³ | 12.11 m ³ | 15.84 yd ³ | 9.43 m ³ | 12.33 yd ³ |
| Width | 3260 mm | 10.7 ft | 3560 mm | 11.7 ft | 4063 mm | 13.3 ft |
| Height | 2025 mm | 6.6 ft | 2030 mm | 6.7 ft | 1768 mm | 5.8 ft |
| Digging Depth | 501 mm | 19.7 in | 502 mm | 19.7 in | 590 mm | 23.2 in |
| Ground Clearance | 1180 mm | 46.5 in | 1180 mm | 46.5 in | 1094 mm | 43.1 in |
| Maximum Tilt | 812 mm | 32.0 in | 791 mm | 31.2 in | 735 mm | 28.9 in |
| Weight | 1583 kg | 3,491 lb | 1693 kg | 3,732 lb | 1432 kg | 3,158 lb |

D6T Track-Type Tractor Specifications

Winch

| | | |
|------------------------------------|------------------|--------------------|
| Winch Model | PA56 | |
| Winch Drive | Mechanical | |
| Control | Mechanical | |
| Weight | 1203 kg | 2,652 lb |
| Oil Capacity | 67 L | 17.8 gal |
| Increased Tractor Length | | |
| XL/XW | 516 mm | 20.4 in |
| LGP | 365 mm | 14.4 in |
| Drum Diameter | 254 mm | 10 in |
| Rope Diameter | | |
| Recommended | 22 mm | 0.88 in |
| Optional | 25 mm | 1 in |
| Drum Capacity | | |
| 22 mm (0.88 in) | 88 m | 288.7 ft |
| 25 mm (1.0 in) | 67 m | 219.8 ft |
| Cable Ferrule Size (O.D. × Length) | 54 mm × 67 mm | 2.1 in × 2.6 in |
| Maximum Bare Drum | | |
| Line Pull* | 40 700 kg | 89,800 lb |
| Line Speed | 39.6 m/min | 130 ft/min |
| Maximum Full Drum | | |
| Line Pull* | 34 600 kg | 76,300 lb |
| Line Speed | 68.3 m/min | 224 ft/min |

*Maximum line pull is lesser of calculated line pull at maximum tractor PTO output torque or catalog breaking strength of maximum optional size new IWRC IPS wire rope.

Standards

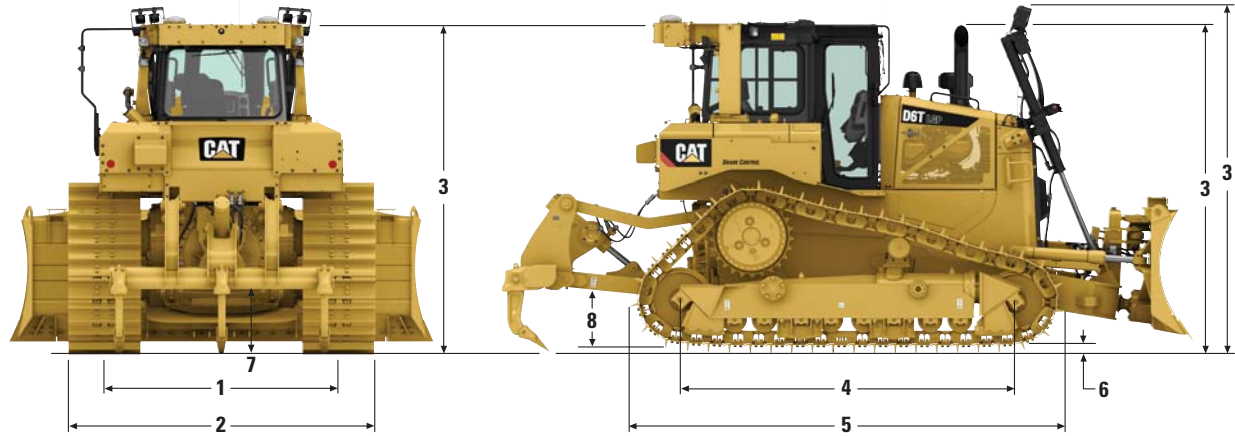
| | |
|-----------|---|
| ROPS/FOPS | ROPS meets ISO 3471:2008, FOPS meets ISO 3449:2005 Level II |
| Brakes | Brakes meet the International Standard ISO 10265:2008 |
| Cab | Meets appropriate standards as listed below |

- The declared dynamic operator sound pressure level is 77 dB(A) when “ISO 6396:2008” is used to measure the value for an enclosed cab. The measurement was conducted at 70% of the maximum engine cooling fan speed. The sound level may vary at different engine cooling fan speeds. The cab was properly installed and maintained. The measurement was conducted with the cab doors and the cab windows closed. The cab was properly installed and maintained.
- **Sound Level Information for Machines in European Union Countries and in Countries that Adopt the “European Union Directives”** – The information below applies to only the machine configurations that have the “CE” mark on the Product Identification Plate.
- The declared dynamic operator sound pressure level is 75 dB(A) when “ISO 6396:2008” is used to measure the value for an enclosed cab. The measurement was conducted at 70% of the maximum engine cooling fan speed. The sound level may vary at different engine cooling fan speeds. The cab was properly installed and maintained. The measurement was conducted with the cab doors and the cab windows closed. The cab was properly installed and maintained.
- Hearing protection is recommended when operating with an open operator station and cab (when not properly maintained or doors/windows open) for extended periods or in noisy environment.
- The declared exterior sound power level is 111 dB(A) when the value is measured according to the dynamic test procedures and the conditions that are specified in “ISO 6395:2008.” The measurement was conducted at 70% of the maximum engine cooling fan speed. The sound level may vary at different engine cooling fan speeds.

D6T Track-Type Tractor Specifications

Dimensions

All dimensions are approximate.



| | XL | | XW | | LGP | |
|---|------------------------|-----------------------|---------------------|-----------------------|---------------------|------------------------|
| 1 Track gauge | 1880 mm | 6 ft 2 in | 2032 mm | 6 ft 8 in | 2286 mm | 7 ft 6 in |
| 2 Width of tractor over trunnions | 2640 mm ⁽⁴⁾ | 8 ft 8 in | 2950 mm | 9 ft 8 in | 3491 mm | 11 ft 5 in |
| Width of tractor without trunnions (standard track) | 2440 mm ⁽⁴⁾ | 8 ft 0 in | 2792 mm | 9 ft 2 in | 3201 mm | 10 ft 6 in |
| 3 Machine height ⁽²⁾ from tip of grouser: | | | | | | |
| ROPS | 3185 mm | 10 ft 5 in | 3185 mm | 10 ft 5 in | 3235 mm | 10 ft 7 in |
| Product Link Antenna | 3253 mm | 10 ft 8 in | 3253 mm | 10 ft 8 in | 3303 mm | 10 ft 10 in |
| Premium Light Package | 3341 mm | 11 ft 0 in | 3341 mm | 11 ft 0 in | 3097 mm | 10 ft 2 in |
| Height to top of Sweeps (not shown) ⁽³⁾ | 3202 mm | 10 ft 6 in | 3202 mm | 10 ft 6 in | 3249 mm | 10 ft 8 in |
| 4 Length of track on ground | 2814 mm | 9 ft 3 in | 2814 mm | 9 ft 3 in | 3245 mm | 10 ft 8 in |
| 5 Length of basic tractor | 4210 mm | 13 ft 10 in | 4210 mm | 13 ft 10 in | 4415 mm | 14 ft 6 in |
| With the following attachments add: | | | | | | |
| Drawbar | 218 mm | 9 in | 218 mm | 9 in | 258 mm | 10 in |
| Ripper Multi-shank (tip at ground line) | 1387 mm | 4 ft 7 in | 1387 mm | 4 ft 7 in | 1291 mm | 4 ft 3 in |
| Winch | 562 mm | 22 in | 562 mm | 22 in | 457 mm | 18 in |
| SU Blade (S Blade LGP) | 1128 mm | 3 ft 8 in | 1128 mm | 3 ft 8 in | 1056 mm | 3 ft 6 in |
| A Blade | 1005 mm | 3 ft 4 in | 1075 mm | 3 ft 6 in | 1379 mm | 4 ft 6 in |
| A Blade angled approximately 25° for transport | 837 mm | 33 in | 889 mm | 35 in | 989 mm | 38.9 in |
| 6 Height of grouser | 65 mm | 2.6 in | 65 mm | 2.6 in | 65 mm | 2.6 in |
| 7 Ground clearance | 375 mm | 15 in | 375 mm | 15 in | 406 mm | 16 in |
| Oscillation at front idler | 141 mm | 5.5 in | 137 mm | 5.4 in | 163 mm | 6.4 in |
| Track pitch | 203 mm | 8 in | 203 mm | 8 in | 203 mm | 8 in |
| Number of shoes per side | | 41 | | 41 | | 45 |
| Track rollers/carrier rollers per side | | 7/1 | | 7/1 | | 8/1 |
| Standard shoe width (moderate service) | 560 mm | 22 in | 760 mm | 30 in | 915 mm | 36 in |
| Ground contact area (standard track) ⁽¹⁾ | 3.50 m ² | 5,425 in ² | 4.75 m ² | 7,362 in ² | 6.49 m ² | 10,062 in ² |
| Ground pressure (ISO 16754) ⁽¹⁾ | 59.7 kPa | 8.66 psi | 45.8 kPa | 6.64 psi | 35.2 kPa | 5.11 psi |
| 8 Drawbar height | 576 mm | 23 in | 576 mm | 23 in | 626 mm | 25 in |
| From ground face of shoe | 511 mm | 20 in | 511 mm | 20 in | 561 mm | 22 in |

⁽¹⁾ All dimensions above with Heavy Duty undercarriage. XL and XW with SU blade, LGP with S blade with no rear attachments unless otherwise specified and calculated per ISO 16754.

⁽²⁾ When Cat GRADE with 3D antennas are installed, overall machine height at the ROPS increases by approximately 73 mm (3.9 in).

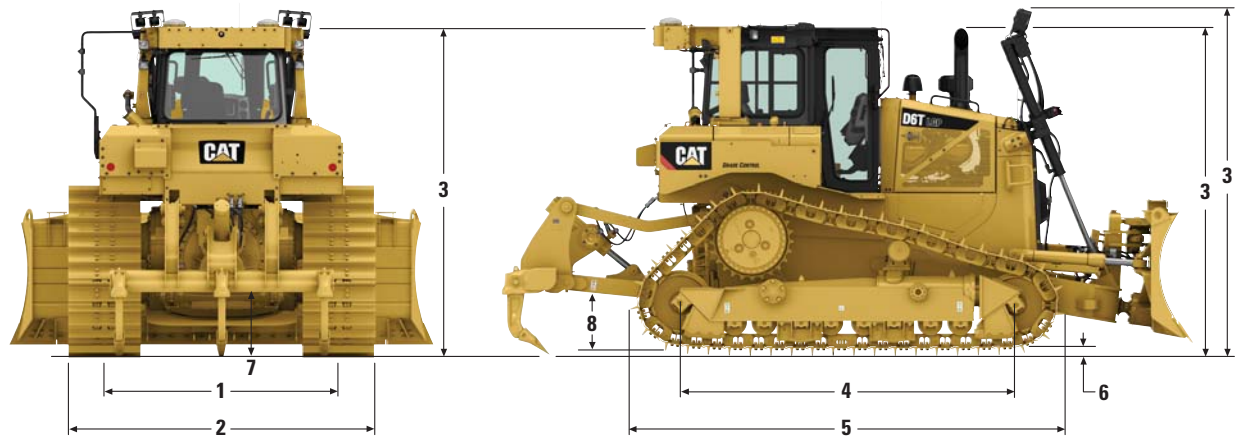
⁽³⁾ Forestry Sweeps are approximately 65 mm (2.6 in) higher than standard sweeps when product link antenna is mounted.

⁽⁴⁾ Dimensions with handle and guardrail removed. Dimensions with guardrail and handle are 2690 mm (8 ft 10 in) and 2654 mm (8 ft 8 in) without trunnions and with trunnions respectively.

D6T Track-Type Tractor Specifications

Dimensions

All dimensions are approximate.



| | XL VPAT | | XW VPAT | | LGP VPAT | |
|---|---------------------|-----------------------|---------------------|-----------------------|---------------------|-----------------------|
| 1 Track gauge | 2134 mm | 7 ft 0 in | 2286 mm | 7 ft 6 in | 2286 mm | 7 ft 6 in |
| 2 Width of tractor over trunnions | — | — | — | — | — | — |
| Width of tractor without trunnions (standard track) | 2717 mm | 8 ft 11 in | 2996 mm | 9 ft 10 in | 3143 mm | 10 ft 4 in |
| 3 Machine height ⁽²⁾ from tip of grouser: | | | | | | |
| ROPS | 3185 mm | 10 ft 5 in | 3235 mm | 10 ft 7 in | 3235 mm | 10 ft 7 in |
| Product Link Antenna | 3253 mm | 10 ft 8 in | 3303 mm | 10 ft 10 in | 3303 mm | 10 ft 10 in |
| Premium Light Package | 3352 mm | 11 ft 0 in | 3402 mm | 11 ft 2 in | 3402 mm | 11 ft 2 in |
| Height to top of Sweeps (not shown) ⁽³⁾ | 3202 mm | 10 ft 6 in | 3249 mm | 10 ft 8 in | 3249 mm | 10 ft 8 in |
| 4 Length of track on ground | 2814 mm | 9 ft 3 in | 3245 mm | 10 ft 8 in | 3245 mm | 10 ft 8 in |
| 5 Length of basic tractor | 4894 mm | 16 ft 1 in | 5002 mm | 16 ft 5 in | 5002 mm | 16 ft 5 in |
| With the following attachments add: | | | | | | |
| Drawbar | 218 mm | 9 in | 258 mm | 10 in | 258 mm | 10 in |
| Ripper Multi-shank (tip at ground line) | 1387 mm | 4 ft 7 in | 1291 mm | 4 ft 3 in | 1291 mm | 4 ft 3 in |
| Winch | 562 mm | 22 in | 457 mm | 18 in | 457 mm | 18 in |
| VPAT Blade | 489 mm | 1 ft 7 in | 486 mm | 1 ft 7 in | 486 mm | 1 ft 7 in |
| VPAT Blade angled approximately 25° for transport | 670 mm | 26.4 in | 720 mm | 28.3 in | 720 mm | 28.3 in |
| 6 Height of grouser | 65 mm | 2.6 in | 65 mm | 2.6 in | 65 mm | 2.6 in |
| 7 Ground clearance | 375 mm | 15 in | 406 mm | 16 in | 406 mm | 16 in |
| Oscillation at front idler | 141 mm | 5.5 in | 163 mm | 6.4 in | 163 mm | 6.4 in |
| Track pitch | 203 mm | 8 in | 203 mm | 8 in | 203 mm | 8 in |
| Number of shoes per side | | 41 | | 45 | | 45 |
| Track rollers/carrier rollers per side | | 7/1 | | 8/1 | | 8/1 |
| Standard shoe width (moderate service) | 560 mm | 22 in | 710 mm | 28 in | 790 mm | 31 in |
| Ground contact area (standard track) ⁽¹⁾ | 3.50 m ² | 5,425 in ² | 5.05 m ² | 7,826 in ² | 5.60 m ² | 8,688 in ² |
| Ground pressure (ISO 16754) ⁽¹⁾ | 67.4 kPa | 9.78 psi | 47.7 kPa | 6.92 psi | 43.3 kPa | 6.28 psi |
| 8 Drawbar height | 576 mm | 23 in | 626 mm | 25 in | 626 mm | 25 in |
| From ground face of shoe | 511 mm | 20 in | 561 mm | 22 in | 561 mm | 22 in |

⁽¹⁾ All dimensions above with Heavy Duty undercarriage. XL and XW with SU blade, LGP with S blade with no rear attachments unless otherwise specified and calculated per ISO 16754.

⁽²⁾ When Cat GRADE with 3D antennas are installed, overall machine height at the ROPS increases by approximately 73 mm (3.9 in).

⁽³⁾ Forestry Sweeps are approximately 65 mm (2.6 in) higher than standard sweeps when product link antenna is mounted.

Standard Equipment

Standard equipment may vary. Consult your Cat dealer for details.

POWER TRAIN

- C9.3 ACERT diesel engine U.S. EPA Tier 4 Final certified engine with aftertreatment
- Air cleaner, strata tube precleaner with dust ejection
- Air filter with electronic service indicator
- Aftercooler, air to air (ATAAC)
- Coolant, extended life
- Full Auto Shift
- Fan, hydraulic
- Final drives, single reduction planetary
- Fuel priming pump, electric
- Parking brake, electronic
- Radiator, aluminum bar plate
- Shift management – automatic directional and downshift controlled throttle, load compensated
- Starting aid, ether, automatic
- Torque divider, lock-up
- Transmission, electronically controlled powershift, four speed
- Turbocharger, wastegate
- Fuel water separator
- Ecology drain

UNDERCARRIAGE

- Carrier rollers
- Clamp master link
- Equalizer bar
- Guards, end track guiding
- Idlers, center tread
- Rollers, lifetime lubricated
- Track, lifetime lubricated
- Track roller frames, tubular
- Track adjusters, hydraulic
- Sprocket rim segments, replaceable

ELECTRICAL

- Alarm, backup
- Alternator, brushless
- Batteries, two maintenance free 12V (1400 cca) (24V system), heavy duty
- Converter, two 10 amp 12V outlets
- Connector, diagnostic
- Starter, heavy duty, 24V
- Horn, forward warning
- Jacket water heater, 120V
- Light, work, underhood

OPERATOR ENVIRONMENT

- Air conditioner, ROPS mounted
- Armrest, adjustable
- Cab, ROPS/FOPS, sound suppressed and pressurized
- Cup holders
- Decelerator and brake pedal
- Electro-hydraulics implement and steering controls
- 180 mm (7 in) full color LCD display
 - Engine coolant, power train oil, and
 - Hydraulic oil temperature, fuel and
 - DEF level and engine RPM/gear display, hours, time and slope indicate
- Camera ready
- Foot pads, dash
- Heater
- Hour meter, electronic
- Mirror, rearview
- Power train control module
 - Throttle dial, electronic
 - Manual shift mode switch
 - Bi-directional shift dial
- Radio, AM/FM
- Seat, cloth, air-suspension
- Seat belt, retractable 76 mm (3 in)
- Wipers, two speed
- Glove box

TECHNOLOGY

- Cat GRADE with Slope Assist
- Product Link
- Stable blade

OTHER STANDARD EQUIPMENT

- CD ROM parts book
- Engine enclosures, perforated
- Front pull device
- Guards, hinged bottom
- Ground level service center with remote electrical disconnect, secondary shutdown switch and hour meter
- Hood, perforated
- Hydraulics, independent steering, work tool and fan pumps
- Hydraulics, load sensing, dozer lift and tilt
- Mounting, lift cylinder
- Oil cooler, hydraulic
- Radiator doors, perforated, louvered, and hinged
- S-O-SSM sampling ports
- Vandalism protection for fluid compartments and battery box

Optional Equipment

Optional equipment may vary. Consult your Cat dealer for details.

POWER TRAIN

- Final drive, XL/XL guarded
- Final drive, XW/XW guarded
- Final drive, XL VPAT
- Final drive, LGP
- Final drive, LGP guarded
- Engine, thermal shield
- Precleaner, with screen
- Oil change system, high speed

UNDERCARRIAGE

- XL/XW Undercarriage Arrangements
 - SystemOne, Partial Guide
 - SystemOne, Full Guide
 - Heavy Duty
 - Heavy Duty, Partial Guide
 - Heavy Duty, Full Guide
 - Heavy Duty, Waste
- LGP Undercarriage Arrangements
 - SystemOne, Partial Guide
 - SystemOne, Full Guide
 - Heavy Duty, Center Guide
 - Heavy Duty, Partial Guide
 - Heavy Duty, Full Guide
 - Heavy Duty, Waste
- XL VPAT Undercarriage Arrangements
 - SystemOne, Partial Guide
 - SystemOne, Full Guide
 - Heavy Duty
 - Heavy Duty, Partial Guide
 - Heavy Duty, Full Guide
 - Heavy Duty, Waste
- XW VPAT/LGP VPAT Undercarriage Arrangements
 - SystemOne, Partial Guide
 - SystemOne, Full Guide
 - Heavy Duty, Standard
 - Heavy Duty, Partial Guide
 - Heavy Duty, Full Guide
 - Heavy Duty, Waste

- Track Pairs (XL Tractor, 41 Section)
 - Heavy Duty
 - 560 mm (22 in) Moderate Service
 - 560 mm (22 in) Extreme Service
 - 610 mm (24 in) Moderate Service
 - 610 mm (24 in) Extreme Service
 - 610 mm (24 in) Extreme Service, Trapezoidal
 - SystemOne
 - 560 mm (22 in) Moderate Service
 - 560 mm (22 in) Extreme Service
 - 610 mm (24 in) Moderate Service
 - 610 mm (24 in) Extreme Service
 - 560 mm (22 in) Extreme Service, Center Hole
 - 610 mm (24 in) Extreme Service, Center Hole
- Track Pairs (XW Tractor, 41 Section)
 - Heavy Duty
 - 610 mm (24 in) Moderate Service
 - 610 mm (24 in) Extreme Service
 - 610 mm (24 in) Extreme Service, Trapezoidal
 - 760 mm (30 in) Extreme Service
 - 760 mm (30 in) Extreme Service, Trapezoidal
 - 760 mm (30 in) Moderate Service
 - SystemOne
 - 560 mm (22 in) Moderate Service
 - 610 mm (24 in) Moderate Service
 - 610 mm (24 in) Extreme Service
 - 760 mm (30 in) Moderate Service
 - 760 mm (30 in) Extreme Service
 - 710 mm (28 in) Moderate Service
 - 760 mm (30 in) Extreme Service, Center Hole
- Track Pairs (LGP Tractor, 45 Section)
 - Heavy Duty
 - 710 mm (28 in) Moderate Service
 - 760 mm (30 in) Extreme Service
 - 760 mm (30 in) Extreme Service, Trapezoidal
 - 915 mm (36 in) Moderate Service
 - 915 mm (36 in) Extreme Service, Trapezoidal
 - 1000 mm (39 in) Self-Clean
 - SystemOne
 - 915 mm (36 in) Moderate Service
 - 915 mm (36 in) Extreme Service
 - 760 mm (30 in) Extreme Service, Center Hole
 - 915 mm (36 in) Extreme Service, Center Hole

- Track Pairs (XL VPAT Tractor, 41 Section)
 - Heavy Duty
 - 560 mm (22 in) Moderate Service
 - 560 mm (22 in) Extreme Service
 - SystemOne
 - 560 mm (22 in) Moderate Service
 - 560 mm (22 in) Extreme Service
 - 610 mm (24 in) Extreme Service, Offset
 - 560 mm (22 in) Extreme Service, Center Hole
- Track Pairs (XW VPAT Tractor, 45 Section)
 - Heavy Duty
 - 610 mm (24 in) Extreme Service
 - 610 mm (24 in) Extreme Service
 - 610 mm (24 in) Moderate Service
 - 710 mm (28 in) Moderate Service
 - 710 mm (28 in) Moderate Service, Trapezoidal
 - 710 mm (28 in) Extreme Service
 - SystemOne
 - 610 mm (24 in) Extreme Service
 - 610 mm (24 in) Extreme Service, Center Hole
 - 610 mm (24 in) Moderate Service
 - 710 mm (28 in) Moderate Service
 - 710 mm (28 in) Extreme Service
- Track Pairs (LGP VPAT Tractor, 45 Section)
 - Heavy Duty
 - 790 mm (31 in) Moderate Service, Offset
 - SystemOne
 - 790 mm (31 in) Extreme Service, Offset
 - 790 mm (31 in) Moderate Service, Offset

Optional Equipment

Optional equipment may vary. Consult your Cat dealer for details.

HYDRAULICS

- Fan, auto reversing

REAR ATTACHMENT HYDRAULICS AND CONTROLS

- No rear hydraulics
- Hydraulics, ripper
- Controls, winch
- Hydraulics, winch/ripper
- Ripper tooth, curved
- Ripper tooth, straight

STARTERS, BATTERIES, AND ALTERNATORS

- Alternator, 150 amp, ducted
- Engine coolant, Arctic (-50° C/-58° F)

ELECTRICAL

- Lights
 - Lighting Group (6 – Basic)
 - Lighting Group (10)
 - Lighting Group (8 – Sweeps)
 - Lighting Group (6 – Basic with Screen)
 - Lighting Group (10 – Premium with Screen)
- Light, warning, strobe
- Light, warning, strobe with plate

OPERATOR ENVIRONMENT

- Operator station
- Cab, dual pane
- Cab, single pane, screen ready
- Air conditioner, ROPS
- Seat, air suspension
- Seat, cloth, heated
- Seat, heated and ventilated
- Radio, AM/FM
- Visibility Arrangement, single camera

TECHNOLOGY PRODUCTS

- Machine control
- Control, basic
- AccuGrade Ready Option (ARO)
- Cat GRADE with 3D
- Product Link, Cellular PLE641
- Product Link, Satellite PLE631

SAFETY AND SECURITY

- Alarm, backup
- Alarm, backup, guarded
- Grab handles
 - Basic
 - Heavy Duty
 - Heavy Duty, sweeps
 - VPAT
 - Heavy Duty, VPAT
 - Sweeps
 - Screen, rear
 - Screens, side
 - Screens, door
 - Rear vision camera

FUEL SYSTEMS

- Fuel tank, fast fill

GUARDS

- Bottom guards
- Guard, bottom, sealed, heavy duty
- Guard, chassis
- Guard, chassis, VPAT
- Guard, fuel tank
- Guard, fuel tank, fast fill
- Guard, lights
- Seal group, high debris

ATTACHMENTS

- Rear attachments
- No rear attachment
- Ripper, multi-shank
- Winch package, standard speed
- PA56 winch package, slow speed
- Drawbar, rigid short
- Drawbar, rigid long
- Striker bar box, rear
- Striker bar box, rear with hydraulics
- Striker bar box, rear
- Striker bar box, rear with hydraulics

OTHER ATTACHMENTS

- Striker bars, front
- Striker bar, rear
- Fairlead, three rollers
- Fourth roller
- Counterweights
 - Additional
 - Rear
 - Rear slab
- Hitch, front
- Towing device, pull-hook

FIELD INSTALLED ATTACHMENTS

- PA56 winch standard and installation arrangement
- PA56 winch slow and installation arrangement
- Fairlead, three rollers
- Fourth roller

BULLDOZER INSTALLATION PACKAGES

- 6SU XL
- 6SU XL, guarded
- 6A XL
- 6A XL HD
- 6SU XW
- 6SU XW, guarded
- 6A XW
- 6S LGP
- 6S LGP, guarded
- 6A LGP
- VPAT XL
- VPAT XL, GRADE with 3D
- VPAT XW/LGP
- VPAT XW/LGP, GRADE with 3D
- Lift cylinders
- Standard, XL/XW or LGP
- GRADE, XL/XW or LGP

BLADES

- 6SU XL ARO
- 6SU XL Landfill
- 6A XL
- 6SU XW ARO
- 6SU XW, Landfill
- 6A XW
- 6S LGP ARO
- 6S LGP, Landfill
- 6A LGP

SPECIAL ARRANGEMENTS

- Waste Handling Arrangement
- Forestry Arrangement

For more complete information on Cat products, dealer services, and industry solutions, visit us on the web at www.cat.com

© 2016 Caterpillar
All rights reserved

Materials and specifications are subject to change without notice. Featured machines in photos may include additional equipment. See your Cat dealer for available options.

CAT, CATERPILLAR, SAFETY.CAT.COM, their respective logos, "Caterpillar Yellow" and the "Power Edge" trade dress, as well as corporate and product identity used herein, are trademarks of Caterpillar and may not be used without permission.

VisionLink is a trademark of Trimble Navigation Limited, registered in the United States and in other countries.

AEHQ7968 (11-2016)
Build Number 19
(North America)

