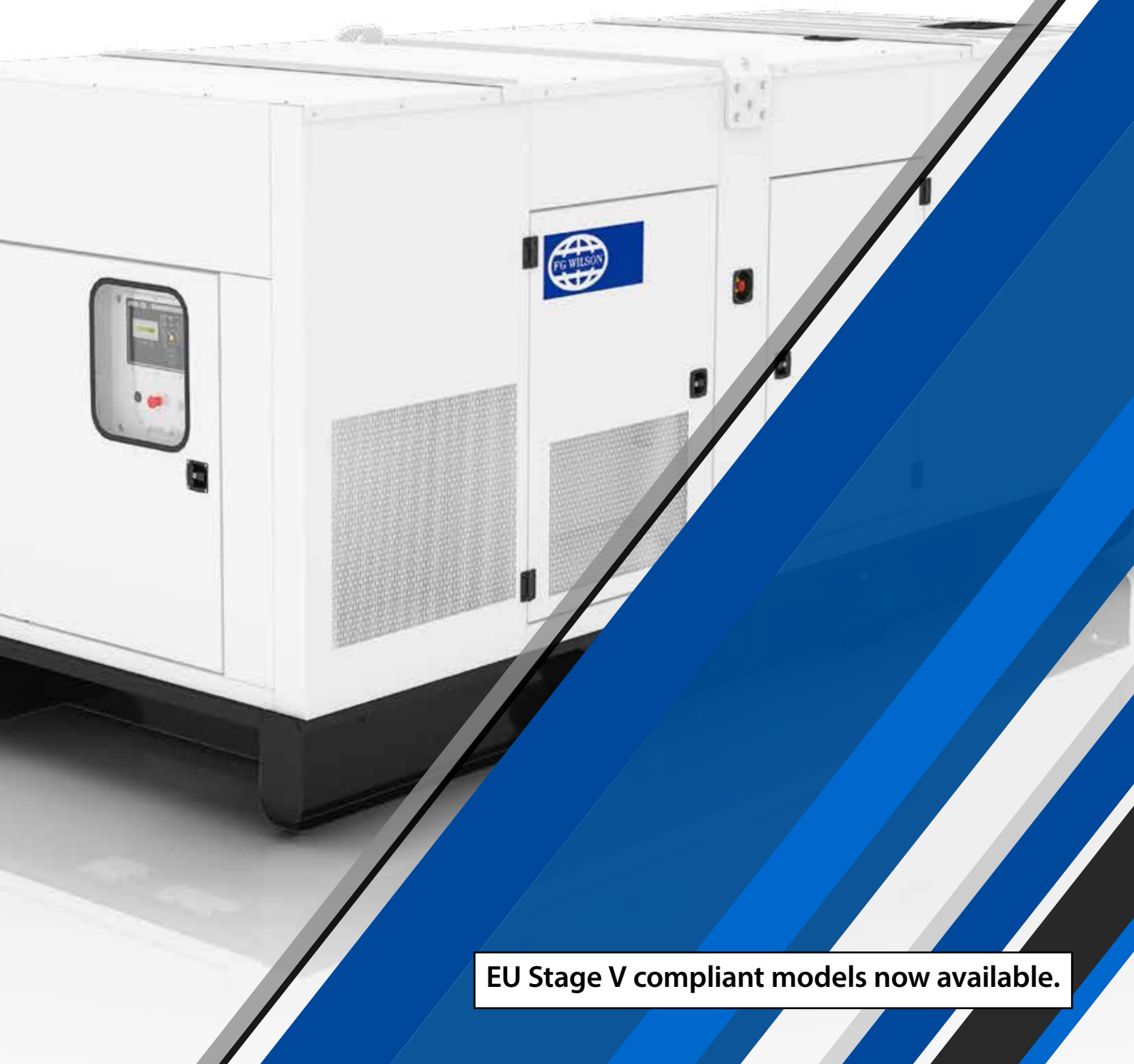




PROFESSIONAL RENTAL OPERATOR RANGE

20 - 550 kVA

Portable power designed for off-grid applications
in any environment.



EU Stage V compliant models now available.

With over 50 years in the Power Generation business, FG Wilson has been a major global player providing power throughout the world.

FG Wilson has a flexible solution for every application through our dedicated Professional Rental Operator (PRO) range. The PRO range offers rental fleet owners product to meet a wide variety of applications.

Our rental generator sets are fuel efficient, easy to operate, and fully robust to meet the rigorous requirements of your temporary power needs.

Our fully sound-attenuated enclosures have excellent noise reduction making them suitable for residential projects, events, and a wide range of other applications.



Applications



Two 200 kVA generator sets providing prime and standby power to a festival stage in Somerset, UK.



Hot air balloon event in Southwest England.



Hired for use on major rail development and station construction sites.



Rapid Response vehicle is designed to get to sites quickly and does not require unloading to supply power.

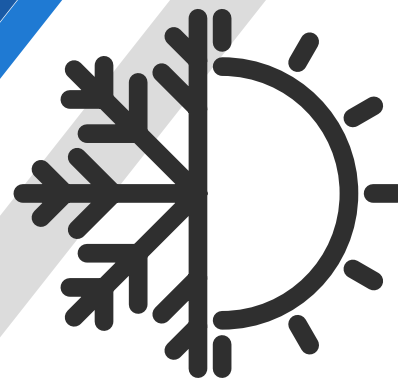
Key Features



Control Panel Options

The DeepSea DSE7320 is fitted as standard providing telematics, allowing remote access to your generator sets regardless of where they may be located.

Other control panels are available.



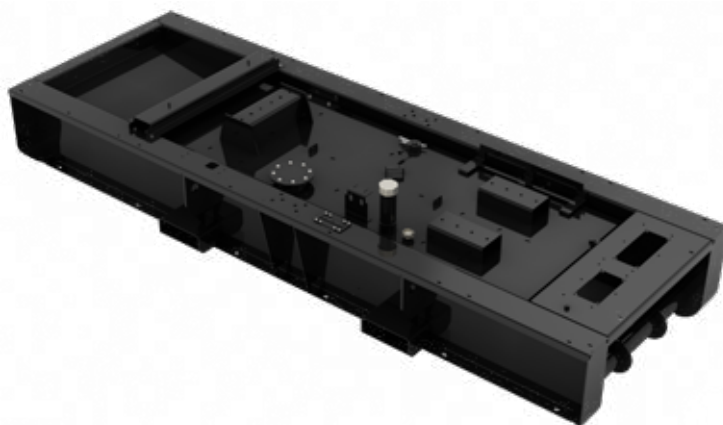
Efficient Operation Designed For All Elements

Designed to operate in the harshest of environments from high ambience up to 43°C down to -5°C. Also including the option to add System 4 / Coastal Ingress Protection (CIP) for harsher environments.



Ease Of Movement

Movement of the generator set is aided through a wide range of lifting options. A lifting frame is housed within the enclosure with additional fork lift pockets; lifting and drag points are positioned on the baseframe, providing simple lifting and positioning of generator set.



Open Bunded Dual Wall Basetank

An open bund basetank designed to capture fluid with additional inspection hatches at the end of the basetank.

Key Features



Access

Large canopy doors allow for easy access to operate and perform servicing procedures on the generator set.



Viscous Clutch Fan Drive*

Providing improved efficiency with fan operating only when required and at appropriate speeds to reduce parasitic loads and fuel consumption. The fan drive also gives improved temperature control for extended engine life along with reduced fan noise. No maintenance required.

*Model dependant



Fuel Optimised Compliance*

Whether you require a generator set to meet the standard emissions or fuel optimised generator sets we have both to meet your needs.

*Model dependant



50 / 60 Hz Switchable*

Allowing the ability to switch between 50 and 60 Hz frequencies on specific models. The PRO rental range is designed to suit you, regardless of where you are in the world.

*Model dependant

Standard Equipment



EU Stage V Emissions Compliant Models Available.



Rental Filter

Racor type fuel separator removes water from the fuel which may occur due to condensation.

3-Way Fuel Valve

Fuel feed and returns pass through 3-way valves to allow change over from the set base tank to an external bulk tank.



4-Pole Circuit Breaker

Accessible inside the power cubicle at the rear of the canopy. Suitably rated with thermal and magnetic overloads.



DeepSea DSE7320 Control Panel

The DSE7320 is a feature packed Auto Mains (Utility) Failure Control Module designed to control single diesel generator set applications. Monitoring an extensive number of engine parameters, the modules will display warnings, shutdown, and engine status information on the back-lit LCD screen, illuminated LEDs, remote PC.

Standard Equipment



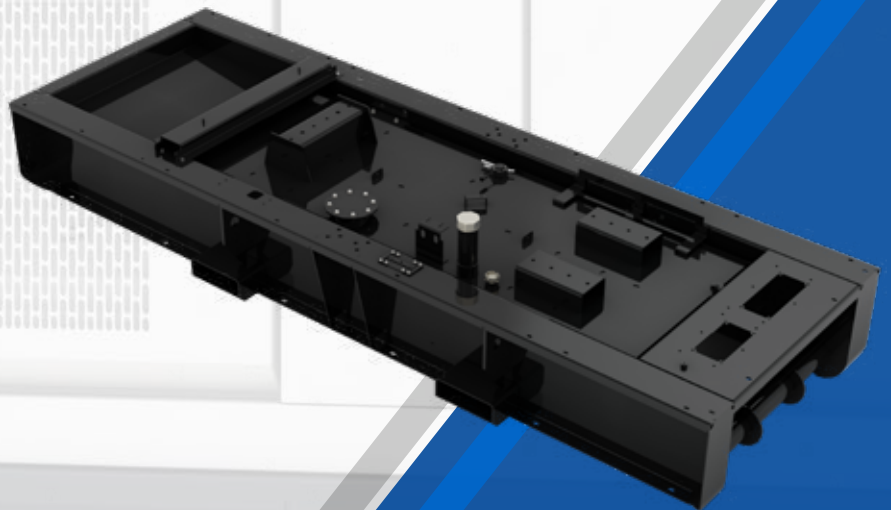
Robust Galvanised Enclosure

The galvanised enclosures are long lasting and hardwearing to withstand the harshest on-site conditions. The sound attenuated enclosures have excellent noise reduction ideal for applications near residential areas. A centrally located lifting frame is housed within the enclosure. Additional fork lift pockets are designed on the baseframe to allow easy movement whilst on site.



Spark Arrestor Designed Within Enclosure

Ensures anyone working around the generator set is protected from hot exhaust components.



Dual Wall Basetank With Leak Alarm and Drag Points

Open bunded dual wall tank designed to catch and contain any potential fluid or oil spillages. The basetank is also fitted with alarm indicating if a leak occur and drag points to aid in installation and positioning on site.

Optional Equipment



CE Certification

A legal requirement if you are to use a generator set within the EU's member states.



Busbar And Sockets

Power cubicles are located at the side / rear of the generator set with cable terminations and suitably rated CEE form socket outlets with earth leakage protection. Allows for safe and easy connection to site loads.



Control Panel Options

The DeepSea DSE7320 is fitted as standard providing telematics, allowing remote access to your generator sets regardless of where they may be located.

Other control panels are available.

Optional Equipment



Other Additional Options

- Jacket Water Heaters
- Alternator Heater
- Lube Oil Pump
- Chargers
- PMG's
- RFI Filter

ComAP IntelliGen NTC Basebox*

Premium generator set controller for both single and multiple gensets operating in standby or parallel modes. Generator set performance log for easy problem tracing and easy remote supervising and servicing. The IntelliGen NTC Basebox is used in conjunction with the detachable IntelliVision 5 colour display.

*Model dependant



Deif AGC-4*

Suitable for a wide range of applications, the AGC-4's standard sequences include backup power, start/stop, synchronisation and load sharing. The AGC-4 supports serial communication protocols including Modbus (RS 485, USB and TCP/IP) and Profibus.

*Model dependant

Technical Data

Generator Technical Data						
Model	Engine	Alternator	50 Hz		60 Hz	
			kVA	kW	kVA	kW
PRO20-4 	404-22G	LL1114M	20	16	-	-
PRO30-1	1103A-33TG1	LL1514F	30	24	35.8	28.6
PRO60-2	1104D-44TG2	LL1514P	60	48	68	54
PRO60-4 	904J-E36TA	FGL20080	60	48	53	42.4
PRO100-1 	1104A-44TAG2	LL3114F	100	80	117	94
PRO115-4	1204J-E44TTAG2	LL3114F	115	92	120	96
PRO150-1 	1106A-70TAG2	LL3114J	150	120	173	172
PRO200-4	1206J-E70TTAG	LL5114F	200	160	225	180
PRO300-1 	1506A-E88TAG4	LL5114N	300	240	344	275
PRO310-4	1706J-E93TAG2	LL5114N	310	248	337.5	270
PRO500-1 	2506A-E15TAG2	LL6114F	500	400	525	420
PRO550-4	2806J-E18TAG1	LL6114K	550	440	588	470

Ratings are based on maximum generator set output – this may vary depending on voltage code selected.

Generator Dimensions					
Model	Length (mm)	Width (mm)	Height (mm)	Weight (kg) Lube Oil and Coolant	Weight (kg) Lube Oil, Coolant and Fuel
PRO20-4	1718	918	1300	735	745
PRO30-1	2150	1120	1583	1230	1385
PRO60-2	2610	1120	1777	1715	2029
PRO60-4	2610	1120	1776.5	1777.5	2060.5
PRO100-1	2770	1120	1847	2027	2456
PRO115-4	2970	1150	2076	2077	2527
PRO150-1	3620	1120	2226	2547	3124
PRO200-4	4085	1420	2367	3651	4487
PRO300-1	4065	1400	2124	3880	4518
PRO310-4	4085	1514	2277	4103	4784
PRO500-1	4930	1620	2167	5288	5986
PRO550-4	5420	2040	2434	6740	7885

Product Support / Dealer Network

Behind each unique concept and power system design is a team of highly skilled, enthusiastic engineers dedicated to delivering your power, when and how you need it.

Meeting your specific power need begins with your local dealer who has the capability to build, install, and commission your customised power system on site. Our sales support engineers, project managers, mechanical and electrical design engineers, backed by over 300 experienced technicians are available to work alongside your local dealer.

FG Wilson Dealer Service Teams are there when you need them, wherever you are, whatever the conditions. Over 1,000 dealer staff receive extensive, ongoing FG Wilson-led product training. This ensures that specialist technicians will always be available to guarantee that every fitting, or repair, is carried out to our specified standards.

Experts in generator set service support, FG Wilson Dealers can meet any maintenance need, from preventative maintenance contracts to emergency breakdown response. We believe it is the passion of our people and the search for engineering excellence in all we do that gives us the power to deliver the superior support that you expect.





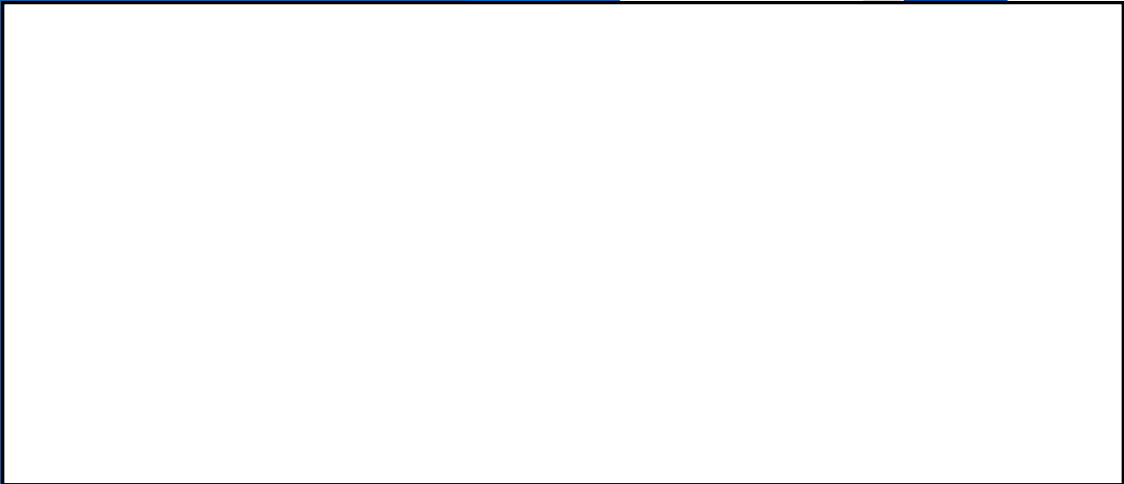
*"ONCE AGAIN I WOULD LIKE TO THANK YOU FOR
YOUR CONSTANT SUPPORT AND LOOK FORWARD TO
CONTINUING OUR EXCELLENT WORKING RELATIONSHIP".*

Charlotte Tinworth (Motor Sports Event Planner) in conjunction with Power Electrics

(FG Wilson UK Dealer)



www.fgwilson.com



FG WILSON MANUFACTURES PRODUCT IN THE FOLLOWING LOCATIONS:

BRAZIL • CHINA • INDIA

WITH HEADQUARTERS IN NORTHERN IRELAND, FG WILSON OPERATES THROUGH A GLOBAL DEALER NETWORK.

TO CONTACT YOUR LOCAL SALES OFFICE PLEASE VISIT THE FG WILSON WEBSITE AT WWW.FGWILSON.COM.

FG WILSON IS A TRADING NAME OF CATERPILLAR (NI) LIMITED.

IN LINE WITH OUR POLICY OF CONTINUOUS PRODUCT DEVELOPMENT, WE RESERVE THE RIGHT TO CHANGE SPECIFICATION WITHOUT NOTICE.