



# Cat<sup>®</sup> 930K

## WHEEL LOADER

### K SERIES – MAKING YOUR CHOICE EASY:

- Enjoy All Day Comfort** – Have a seat in the updated K Series Small Wheel Loader and enjoy excellent all around visibility and low-effort joystick controls that move with you on a fully adjustable seat suspension. A large spacious operator environment combined with Caterpillar's exclusive hydraulic cylinder damping and smooth predictable controls make this the most comfortable seat on your job site.
  - Work Made Easy** – Move more with Caterpillar's patented quick loading Performance Series buckets and optimized Z-bar linkage that combines the digging efficiency of a traditional Z-bar with tool carrier capabilities. The parallel lift and high tilt forces throughout the working range allow you to safely and confidently handle loads with precise control.
- Multi-function work has never been easier with dedicated pumps for each system and a flow sharing implement valve governed by an intelligent power management system. Simultaneously lift, steer and drive without compromise. The K Series Small Wheel Loader simply does what you ask it to do.

- Efficiently Powerful** – Experience hybrid like fuel efficiency with an intelligent hydrostatic power train and industry leading fuel savings through a lower maximum engine speed of just 1,600 rpm in Standard Mode. Power when you need it with Caterpillar's exclusive Power-by-Range technology that increases power in Range 4 for improved speed on grade. For your toughest and most demanding applications a new Performance Mode will allow you to boost the power and hydraulic speed in all Ranges to get the job done even quicker. Meets U.S. EPA Tier 3/EU Stage IIIA/Brazil MAR-1 equivalent emission standards with a Cat<sup>®</sup> C7.1 engine that is designed to manage itself so you can concentrate on your work.
- Customize Your Experience** – Meet your application requirements and individual preferences with Caterpillar's industry first Hystat<sup>™</sup> Operator Modes featuring four unique power train settings. Select classic Torque Converter for smooth rollout, conventional Hystat for aggressive engine braking, an Ice Mode that maximizes your control on slippery underfoot, or default mode which blends the best of Hystat and Torque Converter characteristics. Fine tune machine performance with adjustments at your fingertips through the soft touch buttons and optional secondary display. Quickly set hydraulic response along with linkage kick-out positions, maximum wheel torque, and peak ground speed to efficiently perform a multitude of tasks.

## Specifications

### Engine

Engine Model	Cat C7.1			
Power Mode	Standard Mode	Performance Mode		
Speed Range	Range 1-3*		Range 1-4	
Maximum Gross Power				
Maximum Engine Speed	1,600 rpm		1,800 rpm	
ISO 14396	113 kW	152 hp	119 kW	160 hp
ISO 14396 (metric)	154 hp		162 hp	
Net Power	1,600 rpm		1,800 rpm	
SAE J1349	110 kW	148 hp	116 kW	156 hp
ISO 9249 (metric)	151 hp		159 hp	

### Engine (continued)

	Standard Mode		Performance Mode	
Maximum Gross Torque				
ISO 14396	787 N-m	580 lbf-ft	787 N-m	580 lbf-ft
Maximum Net Torque				
SAE J1349	753 N-m	555 lbf-ft	753 N-m	555 lbf-ft
ISO 9249 (1977)/EEC 80/1269	761 N-m	561 lbf-ft	761 N-m	561 lbf-ft
Displacement	7.01 L	427 in <sup>3</sup>	7.01 L	427 in <sup>3</sup>

- Engine meets U.S. EPA Tier 3/EU Stage IIIA/Brazil MAR-1 equivalent emission standards.
- Net power shown is the power available at the flywheel when the engine is equipped with alternator and air cleaner.

\*Range 4 power is boosted to be the same as Performance Mode.



# 930K Wheel Loader

## Buckets

Bucket Capacities – General Purpose	2.1-2.7 m <sup>3</sup>	2.7-3.5 yd <sup>3</sup>
Bucket Capacities – Light Material	3.1-5.0 m <sup>3</sup>	4.0-6.5 yd <sup>3</sup>

## Steering

Steering Articulation Angle (each direction)	40°	
Maximum Flow – Steering Pump	130 L/min	34 gal/min
Maximum Working Pressure – Steering Pump	24 130 kPa	3,500 psi
Maximum Steering Torque:		
0 degrees (straight machine)	50 375 N·m	37,155 lbf·ft
40 degrees (full turn)	37 620 N·m	27,747 lbf·ft
Steering Cycle Times (full left to full right):		
At 1,800 rpm: 90 rpm steering wheel speed	2.4 seconds	
Number of Steering Wheel Turns – full left to full right or full right to full left	3.5 turns	

## Loader Hydraulic System

Maximum Flow – Implement Pump	190 L/min	50 gal/min
3rd Function Maximum Flow*	190 L/min	50 gal/min
4th Function Maximum Flow*	150 L/min	40 gal/min
Maximum Working Pressure – Implement Pump	25 000 kPa	3,626 psi
Relief Pressure – Tilt Cylinder	28 000 kPa	4,061 psi
3rd Function Maximum Working Pressure	25 000 kPa	3,626 psi
4th Function Maximum Working Pressure	25 000 kPa	3,626 psi
Hydraulic Cycle Times:	Standard Mode	Performance Mode
	At 1,600 rpm	At 1,800 rpm
Raise (ground level to maximum lift)	5.7 seconds	5.1 seconds
Dump (at maximum lift height)	1.7 seconds	1.5 seconds
Float Down (maximum lift to ground level)	2.7 seconds	2.7 seconds
Total Cycle Time	10.1 seconds	9.3 seconds

\*Adjustable from 20% to 100% of maximum flow through the secondary display, when equipped.

## Service Refill Capacities

Fuel Tank	195 L	51.5 gal
Cooling System	32 L	8.5 gal
Engine Crankcase	19.5 L	5.2 gal
Transmission (gearbox)	8.5 L	2.2 gal
Axles:		
Front	26 L	6.9 gal
Rear	25 L	6.6 gal
Hydraulic System (including tank)	165 L	43.6 gal
Hydraulic Tank	90 L	23.8 gal

## Transmission

Forward and Reverse:		
Range 1*	1-13 km/h	0.6-8 mph
Range 2	13 km/h	8 mph
Range 3	27 km/h	17 mph
Range 4	40 km/h	25 mph

\*Creeper control allows maximum speed range adjustability from 1 km/h (0.6 mph) to 13 km/h (8 mph) in Range 1 through the secondary display, when equipped. Factory default is 7 km/h (4.4 mph).

## Tires

Standard Size 20.5 R25, radial (L-3)

Other Choice Varies by Region:

20.5-25 16 PR (L-3)

- Other tire choices are available. Contact your Cat dealer for details.
- In certain applications, the loader's productive capabilities may exceed the tire's tonnes-km/h (ton-mph) capabilities.
- Caterpillar recommends that you consult a tire supplier to evaluate all conditions before selecting a tire model.

## Cab

ROPS SAE J1040 MAY94, ISO 3471-1994

FOPS SAE J/ISO 3449 APR98, Level II, ISO 3449 1992 Level II

- Cab and Rollover Protective Structures (ROPS) are standard.
- A semi-cab option is available.

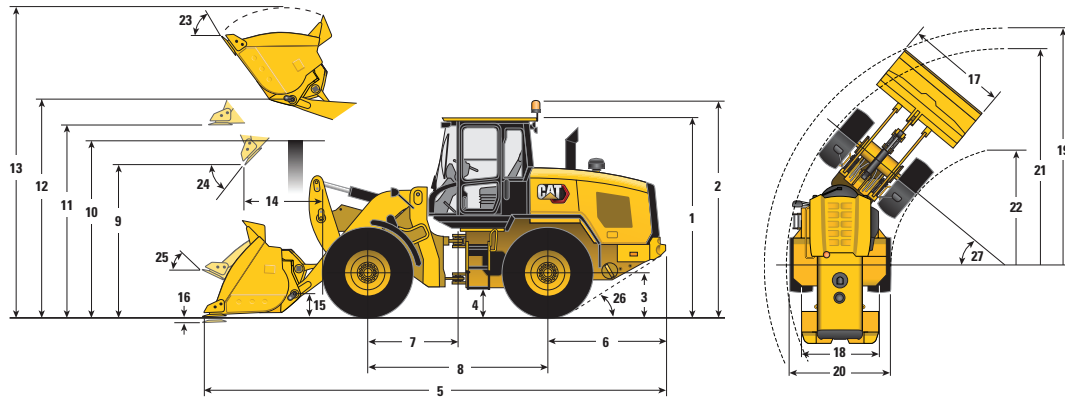
## Sound

- The declared dynamic operator sound pressure level is 72 dB(A) when "ISO 6396:2008" is used to measure the value for an enclosed cab.
- The measurement was conducted at 70% of the maximum engine cooling fan speed, with the cab doors and cab windows closed. The cab was properly installed and maintained. The sound level may vary at different engine cooling fan speeds.
- The declared exterior sound power level is 104 dB(A) when the value is measured according to the dynamic test procedures and the conditions that are specified in "ISO 6395:2008."

## Axles

Front	Fixed
	Open differential (standard)
	Locking differential (optional)
Rear	Oscillating ±11 degrees
	Open differential (standard)
	Limited slip differential (optional in some regions)

## Dimensions and Operating Specifications (All dimensions are approximate. Dimensions vary with bucket and tire choice.)



Counterweight Configuration	Standard Lift		High Lift	
	Standard		Heavy	
** 1 Height: Ground to Cab	3340 mm	10'11"	3340 mm	10'11"
** 2 Height: Ground to Beacon	3707 mm	12'2"	3707 mm	12'2"
** 3 Height: Ground to Axle Center	685 mm	2'3"	685 mm	2'3"
** 4 Height: Ground Clearance	397 mm	1'4"	397 mm	1'4"
* 5 Length: Overall	7613 mm	25'0"	8407 mm	27'7"
6 Length: Rear Axle to Bumper	1993 mm	6'6"	1993 mm	6'6"
7 Length: Hitch to Front Axle	1500 mm	4'11"	1500 mm	4'11"
8 Length: Wheel Base	3000 mm	9'10"	3000 mm	9'10"
* 9 Clearance: Bucket at 45 degrees	2761 mm	9'1"	3353 mm	11'0"
** 10 Clearance: Load Over Height	3331 mm	10'11"	3540 mm	11'7"
** 11 Clearance: Level Bucket	3580 mm	11'9"	4173 mm	13'8"
** 12 Height: Bucket Pin	3907 mm	12'10"	4500 mm	14'9"
** 13 Height: Overall	5239 mm	17'2"	5832 mm	19'2"
* 14 Reach: Bucket at 45 degrees	1109 mm	3'8"	1429 mm	4'8"
15 Carry Height: Bucket Pin	410 mm	1'4"	638 mm	2'1"
** 16 Dig Depth	100 mm	3.9"	135 mm	5.3"
17 Width: Bucket	2550 mm	8'4"	2550 mm	8'4"
18 Width: Tread Center	1930 mm	6'4"	1930 mm	6'4"
19 Turning Radius: Over Bucket	5961 mm	19'7"	6351 mm	20'10"
20 Width: Over Tires	2540 mm	8'4"	2540 mm	8'4"
21 Turning Radius: Outside of Tires	5402 mm	17'9"	5402 mm	17'9"
22 Turning Radius: Inside of Tires	2851 mm	9'4"	2851 mm	9'4"
23 Rack Angle at Full Lift	54 degrees		53 degrees	
24 Dump Angle at Full Lift	48 degrees		47 degrees	
25 Rack Angle at Carry	44 degrees		50 degrees	
26 Departure Angle	33 degrees		33 degrees	
27 Articulation Angle	40 degrees		40 degrees	
* Tipping Load – Straight (ISO 14397-1)	9202 kg	20,286 lb	7017 kg	15,469 lb
* Tipping Load – Full Turn (ISO 14397-1)	7871 kg	17,353 lb	5930 kg	13,072 lb
* Nominal Material Density 110% Fill Factor	1431 kg/m <sup>3</sup>	2,412 lb/yd <sup>3</sup>	1078 kg/m <sup>3</sup>	1,817 lb/yd <sup>3</sup>
* Breakout	11 488 kg	25,325 lb	11 204 kg	24,700 lb
* Operating Weight	13 130 kg	28,945 lb	13 622 kg	30,029 lb

\*Vary with bucket.

\*\*Vary with tire.

Dimensions listed are for a machine configured with specified counterweights, Michelin 20.5 R25 (L-3) XHA2 tires, 80 kg (176 lb) operator, and power train guard. Values are listed for a 2.5 m<sup>3</sup> (3.2 yd<sup>3</sup>) general purpose performance series pin on bucket with bolt-on cutting edge.

# 930K Wheel Loader

## STANDARD EQUIPMENT

### POWER TRAIN

- Auto idle shut down feature
- Cat C7.1 engine
  - Power modes (Standard and Performance)
  - Power by range (High Power in Range 4)
  - Turbocharged and aftercooled
  - Filtered crankcase breather
- Coded start (requires secondary display)
- Coolant protection to -34° C (-29° F)
- Enclosed wet disc full hydraulic brakes
- Fuel priming pump, automatic
- Hydraulically driven demand cooling fan
- Hydrostatic transmission with electronic control
  - Operator modes (Default, TC, Hystat, and Ice)
  - Directional Shift Aggressiveness (fast, medium, slow)
  - Rimpull control, adjust wheel torque
  - Creeper control, adjust ground speed
- Parking brake, electric
- Single plane cooling package wide six fins per inch density
- Throttle lock and max speed limiter

### HYDRAULICS

- Automatic lift and bucket kickouts, adjustable in-cab
- Bucket and fork modes, adjustable in-cab
- Cylinder damping at kickout and mechanical end stops
- Fine mode control (fast, medium, slow) in fork mode
- Hydraulic response setting (fast, medium, slow)
- Hydraulic diagnostic connectors and S-O-S<sup>SM</sup> ports
- Load sensing hydraulics and steering

### ELECTRICAL

- Alternator, 115 amp, heavy duty
- 12V power supply in cab (2)
- Batteries, 1,000 CCA (2) 24V system, disconnect switch
- Back-up alarm
- Emergency shutdown switch
- Halogen work and roading lights, LED rear tail lights
- Remote jump start post
- Resettable main and critical function breakers

### OPERATOR ENVIRONMENT

- 75 mm (3 in) retractable seat belt, with audible alarm and indicator
- Automatic temperature control
- External mirrors with lower parabolic
- Hydraulic control lockout
- Interior cab lighting, door and dome
- Interior rear view mirrors (2)
- Lunch box storage
- Radio ready speakers
- Seat-mounted electronic implement controls, adjustable
- Column mounted multi function control – lights, wipers, turn signal
- Tilt and telescopic steering wheel
- Tinted front glass

### OTHER STANDARD EQUIPMENT

- Large-access enclosure doors with adjustable close/open force
- Parallel lift loader linkage

## OPTIONAL EQUIPMENT

- Auto lube, integrated in secondary display
- Auxiliary flow, third and fourth function, adjustable through secondary display
- Beacon light, strobe
- Cab, deluxe
  - Camera, roof mounted, front view with separate display\*
  - Rear window defroster (standard in Europe)
  - Secondary display to adjust settings (standard in Europe)
  - Sunscreen, front and rear
  - Wet arm wiper/washer, front and rear
- Camera, rear view (standard in Europe)
- Cold start package
- Corrosion protection package
- Counterweight, (heavy and logger)
- Coupler, (Fusion<sup>TM</sup> and ISO 23727)
- Debris packages (low, medium, high)
- Differential lock, front axle
- Fenders (extended cover and full coverage)
- Guarding (machine and operator)
- Linkage, high lift
- Lights, auxiliary, halogen or LED with engine compartment lights
- Lights, LED front roading
- Load check valves
- Object Detection
- Product Link<sup>TM</sup> PRO and ELITE with capabilities for software push, data logging, histogram and trend mapping
- Radio packages
- Rear wiper
- Ride Control System, adjustable through secondary display
- Seats
  - Deluxe seat – fully adjustable fabric air suspension seat with mid backrest and mechanical lumbar support
  - Premium seat – fully adjustable leather and fabric air suspension with high backrest and air lumbar support. Seat is heated and ventilated on bottom cushion and backrest.
- Steering
  - Dual mode and secondary
- CE Certification (standard in Europe)
- NOTE: Not all features are available in all regions.

\*Forward facing camera system may be required for local EU requirements.  
Consult your local Cat dealer for additional information.



For more complete information on Cat products, dealer services, and industry solutions, visit us on the web at [www.cat.com](http://www.cat.com)

© 2021 Caterpillar  
All rights reserved

Materials and specifications are subject to change without notice. Featured machines in photos may include additional equipment. See your Cat dealer for available options.

CAT, CATERPILLAR, LET'S DO THE WORK, their respective logos, "Caterpillar Corporate Yellow," the "Power Edge" and Cat "Modern Hex" trade dress as well as corporate and product identity used herein, are trademarks of Caterpillar and may not be used without permission.

AEHQ7687-01 (04-2021)  
Replaces AEHQ7687 and AEHQ7989  
(AME, AUZ, CIS, LACD,  
Southeast Asia, Turkey)

