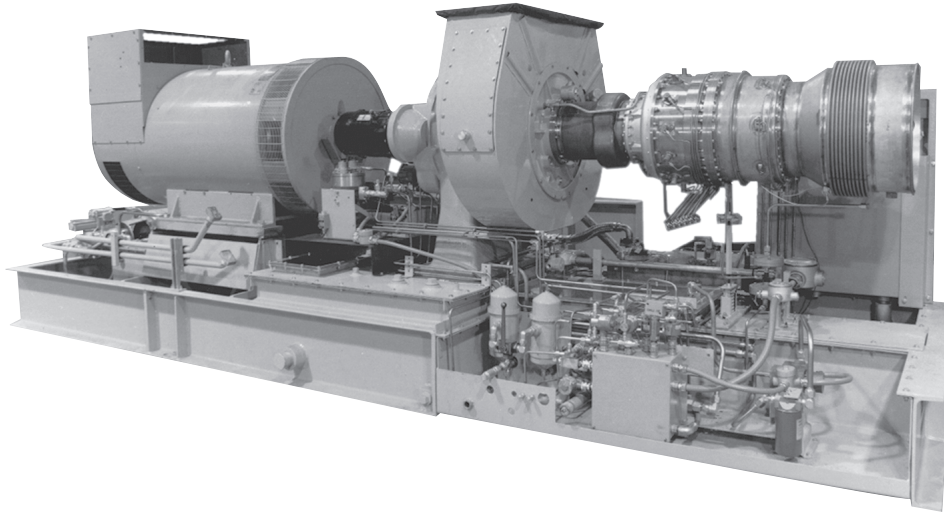


Powering the Future Through Sustainable, Innovative Energy Solutions



TURBINE DESIGN FEATURES

The Saturn® gas turbine is the foundation upon which Solar Turbines has grown into one of the leading manufacturers of industrial gas turbines. The Saturn 20 features high reliability and durability plus low life cycle costs and the experience of over 60 years of service in locations around the globe.



DIGITAL INTEGRATION

InSight Platform™, Solar's proprietary digital technology foundation, is integrated throughout this product and ready to connect in the field. InSight Platform provides an entire ecosystem of tools and capabilities that provide real-time diagnostics and analytics to Solar's Customer Service network, and performance metrics to the equipment owners and operators.



PACKAGE DESIGN FEATURES

With the Saturn 20, Solar continues the legacy of offering compact packages which incorporate all major support systems such as fuel system, lubrication system, start system and control system – all of which are fully tested prior to shipment.



CUSTOMER SERVICES

Solar's worldwide service organization is dedicated to your success. Our culture of customer care is the foundation of our commitment to the highest quality customer experience. With more than 60 service locations around the world, we are committed to ensuring reliable, efficient performance that precisely fits your requirements.

Powering the Future Through Sustainable, Innovative Energy Solutions

Typical Performance

Output Power	1210 kWe
Heat Rate	14 810 kJ/kWe-hr (14,040 Btu/kWe-hr)
Exhaust Flow	23 540 kg/hr (51,890 lb/hr)
Exhaust Temp.	505°C (940°F)

Nominal rating per ISO at 15°C (59°F), sea level

No inlet/exhaust losses

Relative humidity 60%

*Natural gas fuel with LHV = 35 MJ/Nm³
(940 Btu/scf)*

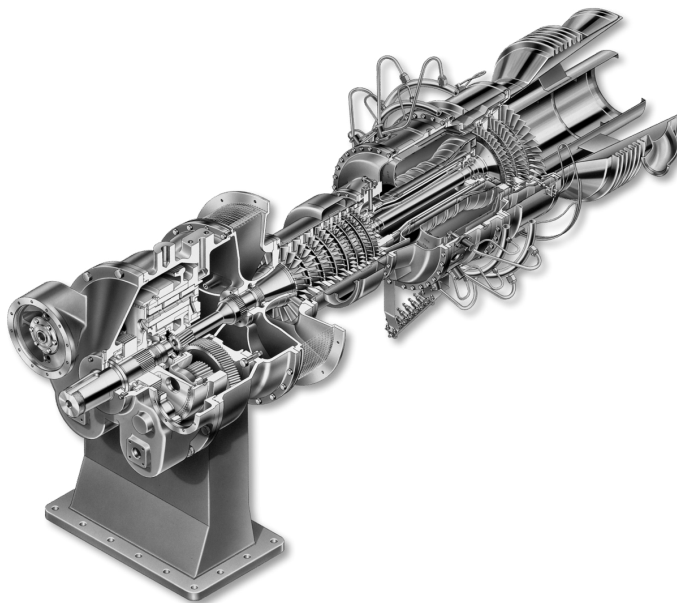
Optimum power turbine speed

No accessory losses

Engine efficiency: 24.3% (measured at generator terminals)

Ratings above are typical new equipment ratings.

Please contact Solar Turbines sales to obtain project specific data.



Typical Package Dimensions

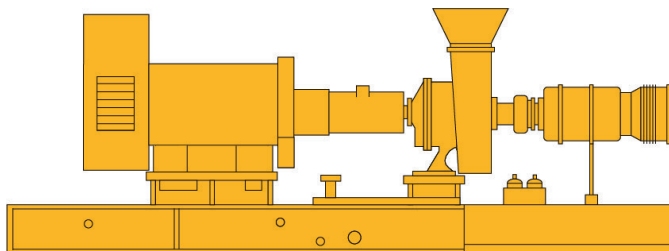
Length: 6.7 m (21' 11")

Width: 2.4 m (8')

Height: 2.7 m (8' 11")

Package Weight, Approx: 10 205 kg (22,500 lb)

Dry weight, unenclosed height, does not include ancillary equipment



Solar Turbines Incorporated
P.O. Box 85376
San Diego, CA 92186-5376

Caterpillar is a trademark of Caterpillar Inc. Solar, Saturn and InSight Platform are trademarks of Solar Turbines Incorporated. Specifications subject to change without notice.
©2021 Solar Turbines Incorporated. All rights reserved.
DS20GS/0221/EO

FOR MORE INFORMATION

Telephone: (+1) 619-544-5352

Email: infocorp@solarturbines.com

Internet: www.solarturbines.com

