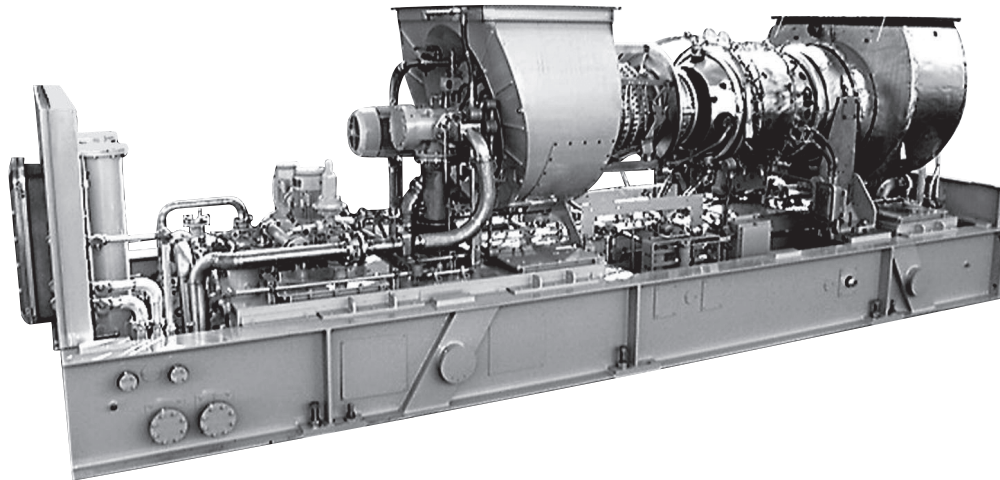


Powering the Future Through Sustainable, Innovative Energy Solutions



TURBINE DESIGN FEATURES

The Mars® is a well-established product family in Solar's line up. The Mars 100 is highly regarded for its durability and reliability, earning the nickname, the rock crusher. The design and configuration are mature and stable which helps provide better reliability and availability. With its vast fleet size and experience, the Mars is a stand-out within the Solar® product family.



DIGITAL INTEGRATION

InSight Platform™, Solar's proprietary digital technology foundation, is integrated throughout this product and ready to connect in the field. InSight Platform provides an entire ecosystem of tools and capabilities that provide real-time diagnostics and analytics to Solar's Customer Service network, and performance metrics to the equipment owners and operators.



PACKAGE DESIGN FEATURES

The power and speed of the Mars 100 are well suited to drive an extensive list of centrifugal gas compressors and pumps, either directly or via a gearbox. With the Mars, Solar continues the legacy of offering compact packages which incorporate all major support systems such as fuel system, lubrication system, start system and control system – all of which are fully tested prior to shipment.



CUSTOMER SERVICES

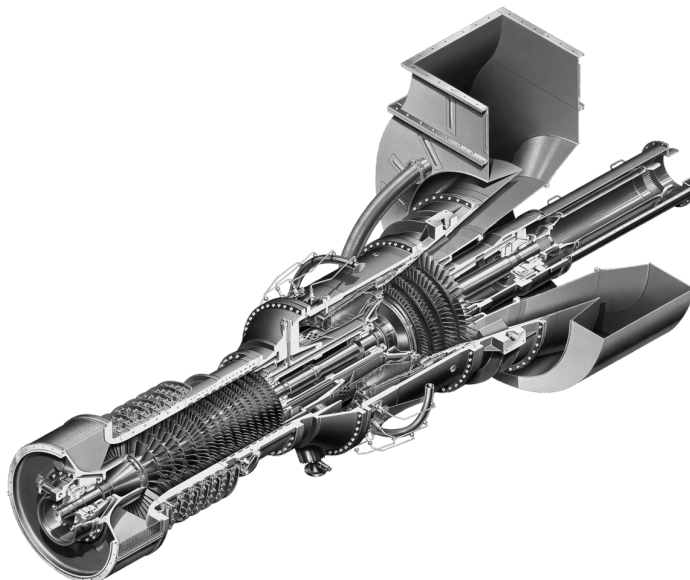
Solar's worldwide service organization is dedicated to your success. Our culture of customer care is the foundation of our commitment to the highest quality customer experience. With more than 60 service locations around the world, we are committed to ensuring reliable, efficient performance that precisely fits your requirements.

Powering the Future Through Sustainable, Innovative Energy Solutions

Typical Performance

Output Power	11 860 kW (15,900 hp)
Heat Rate	10 465 kJ/kW-hr (7395 Btu/hp-hr)
Exhaust Flow	153 245 kg/hr (337,850 lb/hr)
Exhaust Temp.	485°C (905°F)

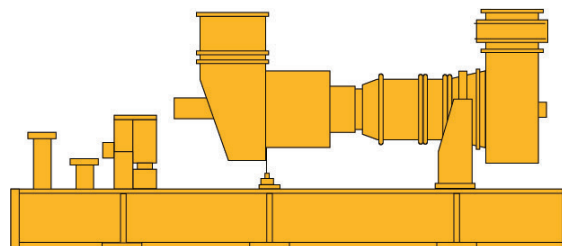
*Nominal rating per ISO at 15°C (59°F), sea level
No inlet/exhaust losses
Relative humidity 60%
Natural gas fuel with LHV = 35 MJ/Nm³
(940 Btu/scf)
Optimum power turbine speed
Without driven accessories
Engine efficiency: 34.4%
Ratings above are typical new equipment
ratings. Please contact Solar Turbines sales to
obtain project specific data.*



Typical Package Dimensions

Length: 9.1 m (30')
Width: 3 m (9' 8")
Height: 3.1 m (10' 3")
Package Weight, Approx: 33 565 kg (74,000 lb)

*Driver package only, dry weight, unenclosed height,
does not include ancillary equipment*



Solar Turbines Incorporated
P.O. Box 85376
San Diego, CA 92186-5376

Caterpillar is a trademark of Caterpillar Inc. Solar, Mars and InSight Platform are trademarks of Solar Turbines Incorporated. Specifications subject to change without notice.
© 2021 Solar Turbines Incorporated. All rights reserved.
DS100MD/0221/EO

FOR MORE INFORMATION

Telephone: (+1) 619-544-5352
Email: infocorp@solarturbines.com
Internet: www.solarturbines.com

