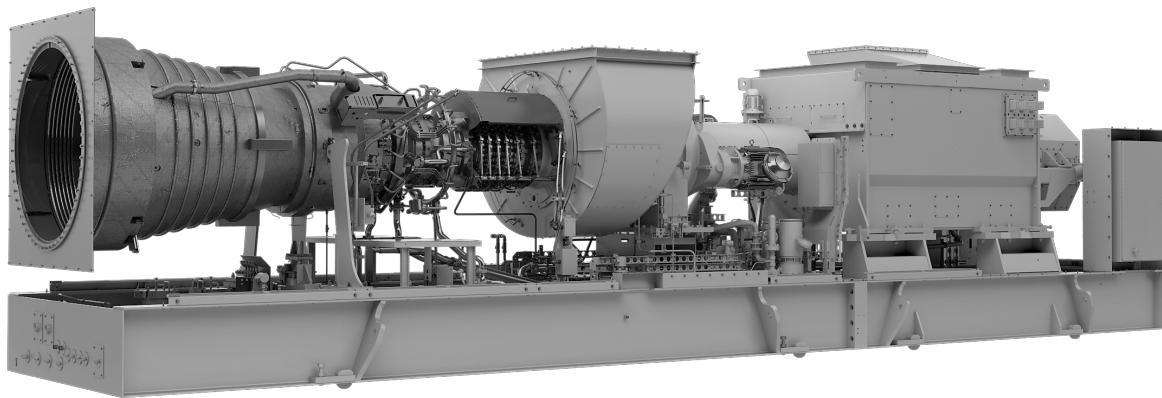


Powering the Future Through Sustainable, Innovative Energy Solutions



### TURBINE DESIGN FEATURES

The Titan™ 130 is a lightweight industrial gas turbine designed for high efficiency across a wide power range. This gas turbine features high reliability, durability and low life cycle costs. The Titan 130 offers best-in-class low emissions capability through our SoLoNOx™ combustion technology with an expansive range of fuels. It has fast start capabilities, a modular design for maintainability and more than 20 years of service in locations across the globe.



### PACKAGE DESIGN FEATURES

With the Titan 130, Solar continues the legacy of offering compact packages which incorporate all major support systems such as fuel system, lubrication system, start system and control system – all of which are fully tested prior to shipment.



### DIGITAL INTEGRATION

InSight Platform™, Solar's proprietary digital technology foundation, is integrated throughout this product and ready to connect in the field. InSight Platform provides an entire ecosystem of tools and capabilities that provide real-time diagnostics and analytics to Solar's Customer Service network, and performance metrics to the equipment owners and operators.



### CUSTOMER SERVICES

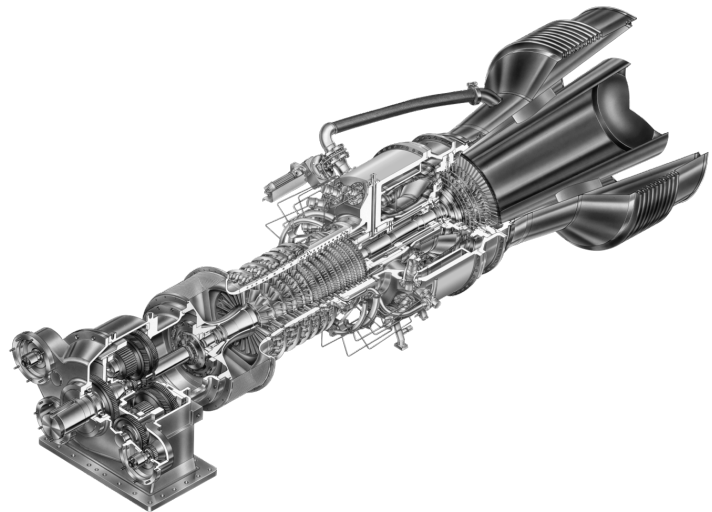
Solar's worldwide service organization is dedicated to your success. Our culture of customer care is the foundation of our commitment to the highest quality customer experience. With more than 60 service locations around the world, we are committed to ensuring reliable, efficient performance that precisely fits your requirements.

Powering the Future Through Sustainable, Innovative Energy Solutions

### Typical Performance

Output Power	16 530 kW <sub>e</sub>
Heat Rate	10 160 kJ/kW <sub>e</sub> -hr (9630 Btu/kW <sub>e</sub> -hr)
Exhaust Flow	202 510 kg/hr (446,460 lb/hr)
Exhaust Temp.	490°C (910°F)

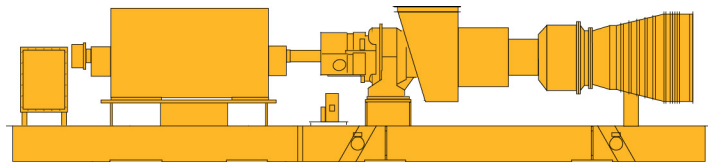
*Nominal rating per ISO at 15°C (59°F), sea level  
No inlet/exhaust losses  
Relative humidity 60%  
Natural gas fuel with LHV = 35 MJ/Nm<sup>3</sup>  
(940 Btu/scf)  
Optimum power turbine speed  
No accessory losses  
Engine efficiency: 35.4% (measured at generator terminals)  
Ratings above are typical new equipment ratings.  
Please contact Solar Turbines sales to obtain project specific data.*



### Typical Package Dimensions

Length: 14.2 m (46' 6")  
Width: 3 m (10')  
Height: 3.9 m (12' 9")  
Package Weight, Approx: 87 510 kg (192,925 lb)

*Dry weight, unenclosed height, does not include ancillary equipment*



Solar Turbines Incorporated  
P.O. Box 85376  
San Diego, CA 92186-5376

Caterpillar is a trademark of Caterpillar Inc. Solar, Titan, SoLoNOx and InSight Platform are trademarks of Solar Turbines Incorporated. Specifications subject to change without notice.  
©2021 Solar Turbines Incorporated. All rights reserved.  
DS130GS/0221/EO

### FOR MORE INFORMATION

Telephone: (+1) 619-544-5352  
Email: [infocorp@solarturbines.com](mailto:infocorp@solarturbines.com)  
Internet: [www.solarturbines.com](http://www.solarturbines.com)

