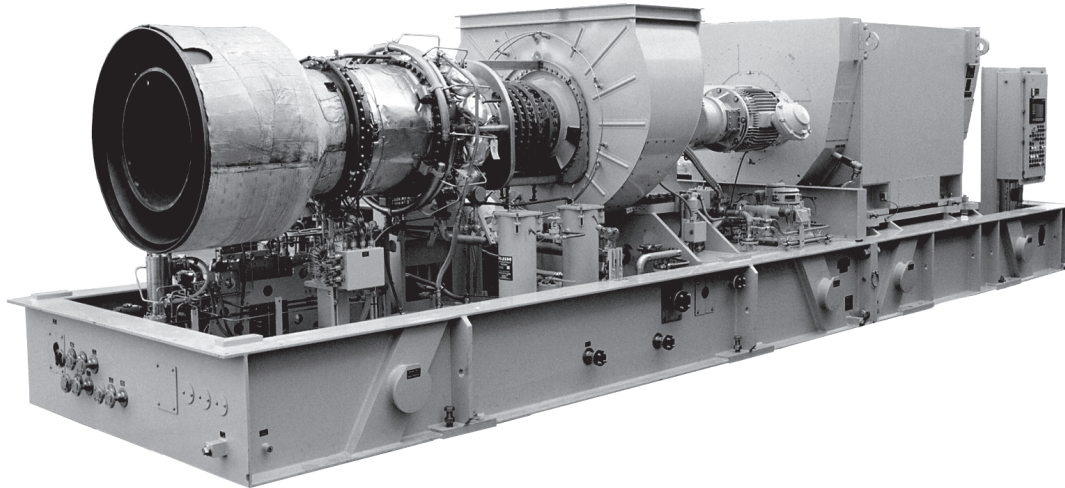


Powering the Future Through Sustainable, Innovative Energy Solutions



TURBINE DESIGN FEATURES

The Taurus™ 70 has been meeting customer expectations for power, efficiency and durability for more than three decades. This gas turbine boasts an expansive range of fuel flexibility, and today's Taurus 70 offers best-in-class, low emissions capability through our SoLoNOx™ combustion system. The Taurus 70 has kept pace and exceeded customer requirements for performance and durability through continuous technology improvements. Its industrial design provides high reliability with low lifecycle cost.



PACKAGE DESIGN FEATURES

With the Taurus 70, Solar continues the legacy of offering compact packages which incorporate all major support systems such as fuel system, lubrication system, start system and control system – all of which are fully tested prior to shipment.



DIGITAL INTEGRATION

InSight Platform™, Solar's proprietary digital technology foundation, is integrated throughout this product and ready to connect in the field. InSight Platform provides an entire ecosystem of tools and capabilities that provide real-time diagnostics and analytics to Solar's Customer Service network, and performance metrics to the equipment owners and operators.



CUSTOMER SERVICES

Solar's worldwide service organization is dedicated to your success. Our culture of customer care is the foundation of our commitment to the highest quality customer experience. With more than 60 service locations around the world, we are committed to ensuring reliable, efficient performance that precisely fits your requirements.

Powering the Future Through Sustainable, Innovative Energy Solutions

Typical Performance

Output Power	8180 kWe
Heat Rate	10 470 kJ/kWe-hr (9920 Btu/kWe-hr)
Exhaust Flow	96 675 kg/hr (213,125 lb/hr)
Exhaust Temp.	520°C (970°F)

Nominal rating per ISO at 15°C (59°F), sea level

No inlet/exhaust losses

Relative humidity 60%

*Natural gas fuel with LHV = 35 MJ/Nm³
(940 Btu/scf)*

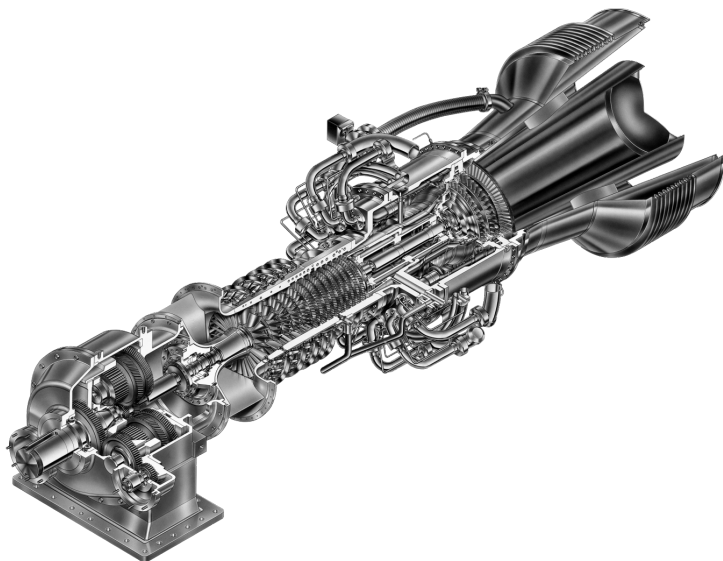
Optimum power turbine speed

No accessory losses

Engine efficiency: 34% (measured at generator terminals)

Ratings above are typical new equipment ratings.

Please contact Solar Turbines sales to obtain project specific data.



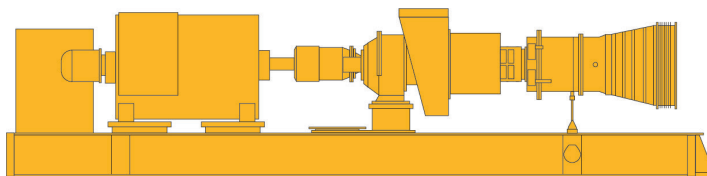
Typical Package Dimensions

Length: 11.1 m (36' 3")

Width: 2.9 m (9' 2")

Height: 3.7 m (12' 1")

Package Weight, Approx: 61 775 kg (136,215 lb)



Dry weight, unenclosed height, does not include ancillary equipment

Solar Turbines Incorporated
P.O. Box 85376
San Diego, CA 92186-5376

Caterpillar is a trademark of Caterpillar Inc. Solar, Taurus, SoLoNOx and InSight Platform are trademarks of Solar Turbines Incorporated. Specifications subject to change without notice.

©2021 Solar Turbines Incorporated. All rights reserved.
DS70GS/0221/EO

FOR MORE INFORMATION

Telephone: (+1) 619-544-5352

Email: infocorp@solarturbines.com

Internet: www.solarturbines.com

