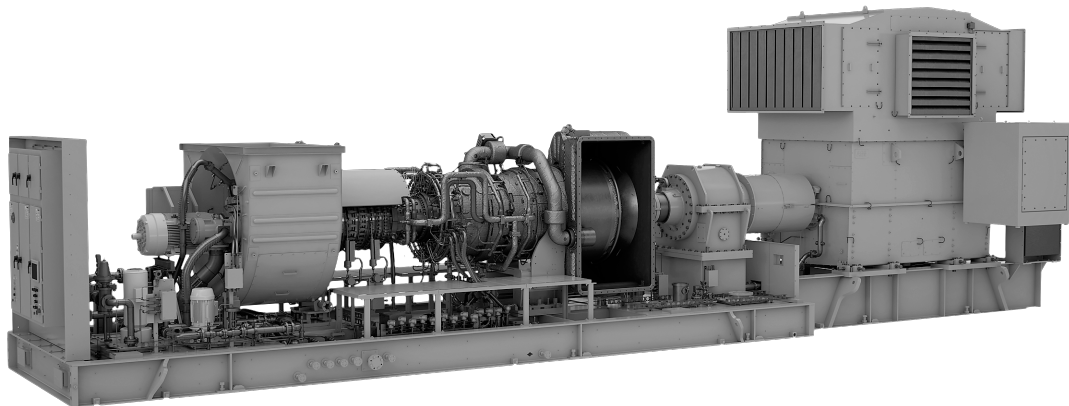


Powering the Future Through Sustainable, Innovative Energy Solutions



TURBINE DESIGN FEATURES

The Titan™ 250 is an industrial gas turbine designed to optimize product footprint while maximizing power density. This gas turbine features high reliability and durability with low total life cycle cost. The Titan 250 offers best-in-class low emissions capability through our proven SoLoNOx™ combustion technology. It has a unique modular design for improved on-skid service flexibility and maintainability. The Titan 250 design has more than ten years of service and presents the global marketplace with the latest technologies and benefits across a wide and challenging range of fuel, site and overall performance conditions.



PACKAGE DESIGN FEATURES

With the Titan 250, Solar continues the legacy of offering compact packages which incorporate all major support systems such as fuel system, lubrication system, start system and control system – all of which are fully tested prior to shipment.



DIGITAL INTEGRATION

InSight Platform™, Solar's proprietary digital technology foundation, is integrated throughout this product and ready to connect in the field. InSight Platform provides an entire ecosystem of tools and capabilities that provide real-time diagnostics and analytics to Solar's Customer Service network, and performance metrics to the equipment owners and operators.



CUSTOMER SERVICES

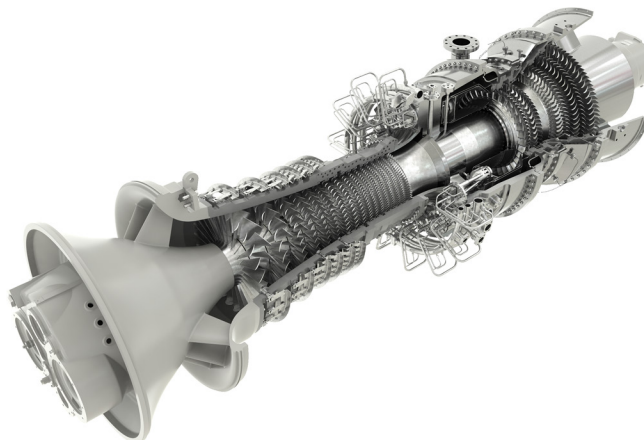
Solar's worldwide service organization is dedicated to your success. Our culture of customer care is the foundation of our commitment to the highest quality customer experience. With more than 60 service locations around the world, we are committed to ensuring reliable, efficient performance that precisely fits your requirements.

Powering the Future Through Sustainable, Innovative Energy Solutions

Typical Performance

Output Power	23 100 kW _e
Heat Rate	9150 kJ/kW _e -hr (8670 Btu/kW _e -hr)
Exhaust Flow	253 440 kg/hr (558,740 lb/hr)
Exhaust Temp.	460°C (865°F)

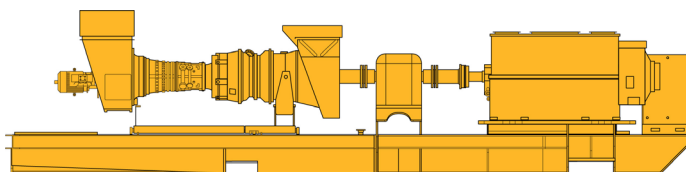
*Nominal rating per ISO at 15°C (59°F), sea level
No inlet/exhaust losses
Relative humidity 60%
Natural gas fuel with LHV = 31.5 to 43.3 MJ/Nm³
(800 to 1100 Btu/scf)
Optimum power turbine speed
No accessory losses
Engine efficiency: 38.6% (measured at generator terminals)
Ratings above are typical new equipment ratings.
Please contact Solar Turbines sales to obtain project specific data.*



Typical Package Dimensions

Length: 18.2 m (59' 6")
Width: 3.4 m (11' 1")
Height: 3.9 m (12' 9")
Package Weight, Approx: 141 150 kg (311,100 lb)

Dry weight, unenclosed height, does not include ancillary equipment



Solar Turbines Incorporated
P.O. Box 85376
San Diego, CA 92186-5376

Caterpillar is a trademark of Caterpillar Inc. Solar, Titan, SoLoNOx and InSight Platform are trademarks of Solar Turbines Incorporated. Specifications subject to change without notice.
©2021 Solar Turbines Incorporated. All rights reserved.
DS250GS/0621/EO

FOR MORE INFORMATION

Telephone: (+1) 619-544-5352
Email: infocorp@solarturbines.com
Internet: www.solarturbines.com

