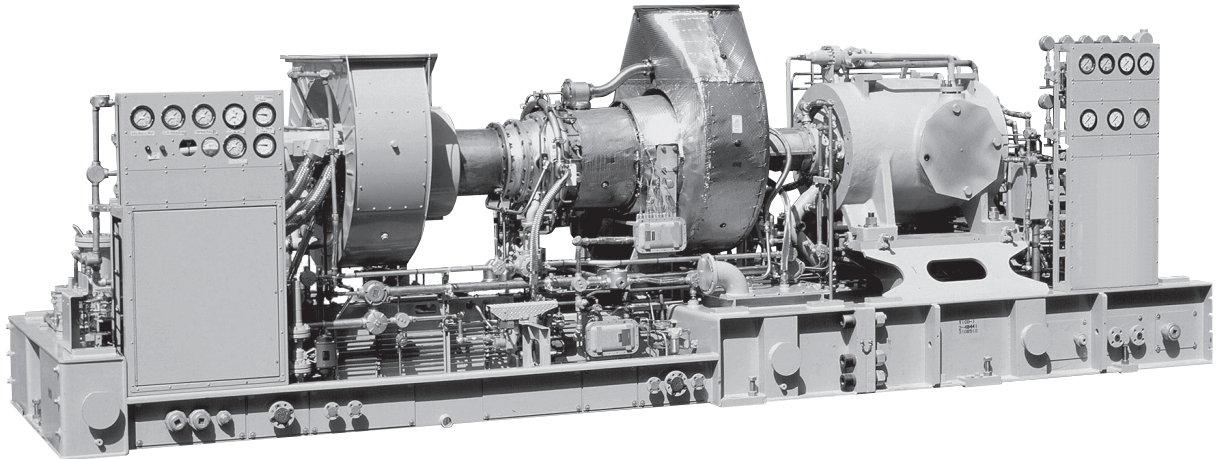


Powering the Future Through Sustainable, Innovative Energy Solutions



### TURBINE DESIGN FEATURES

The Centaur® 40 is a lightweight industrial gas turbine designed to meet customer expectations across a variety of industries and applications. This gas turbine features high reliability and durability plus low life cycle costs. The Centaur 40 offers best-in-class low emissions through our SoLoNOx™ combustion technology with an expansive range of fuels. It has a proven record with over 50 years of service in locations around the globe.



### DIGITAL INTEGRATION

InSight Platform™, Solar's proprietary digital technology foundation, is integrated throughout this product and ready to connect in the field. InSight Platform provides an entire ecosystem of tools and capabilities that provide real-time diagnostics and analytics to Solar's Customer Service network, and performance metrics to the equipment owners and operators.



### PACKAGE DESIGN FEATURES

The power and speed of the Centaur 40 are designed to drive Solar's extensive line of midstream and upstream centrifugal gas compressors, either directly or via a speed increasing gearbox. With the Centaur, Solar continues the legacy of offering compact packages which incorporate all major support systems such as fuel system, lubrication system, start system and control system – all of which are fully tested prior to shipment.



### CUSTOMER SERVICES

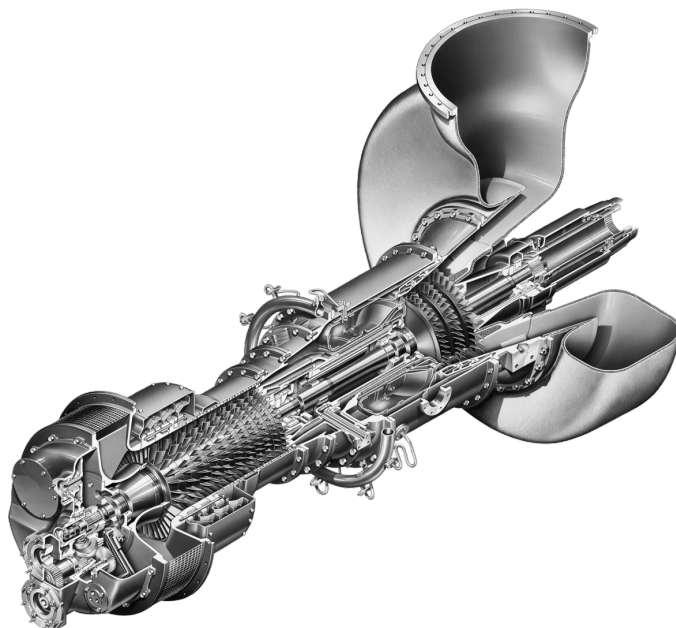
Solar's worldwide service organization is dedicated to your success. Our culture of customer care is the foundation of our commitment to the highest quality customer experience. With more than 60 service locations around the world, we are committed to ensuring reliable, efficient performance that precisely fits your requirements.

Powering the Future Through Sustainable, Innovative Energy Solutions

### Typical Performance

Output Power	3500 kW (4700 hp)
Heat Rate	12 905 kJ/kW-hr (9125 Btu/hp-hr)
Exhaust Flow	68 185 kg/hr (150,320 lb/hr)
Exhaust Temp.	445°C (835°F)

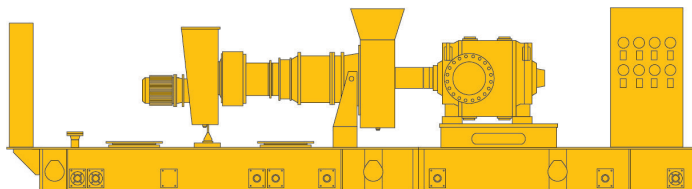
*Nominal rating per ISO at 15°C (59°F), sea level  
No inlet/exhaust losses  
Relative humidity 60%  
Natural gas fuel with LHV = 35 MJ/Nm<sup>3</sup>  
(940 Btu/scf)  
Optimum power turbine speed  
Without driven accessories  
Engine efficiency: 27.9%  
Ratings above are typical new equipment  
ratings. Please contact Solar Turbines sales to  
obtain project specific data.*



### Typical Package Dimensions

Length: 9.7 m (31' 10")  
Width: 2.6 m (8' 8")  
Height: 2.8 m (9' 2")  
Package Weight, Approx: 27 270 kg (60,060 lb)

*Dry weight with typical compressor, unenclosed  
height, does not include ancillary equipment*



Solar Turbines Incorporated  
P.O. Box 85376  
San Diego, CA 92186-5376

Caterpillar is a trademark of Caterpillar Inc. Solar, Centaur, SoLoNOx and InSight Platform are trademarks of Solar Turbines Incorporated. Specifications subject to change without notice.  
© 2021 Solar Turbines Incorporated. All rights reserved.  
DS40CS/0221/EO

### FOR MORE INFORMATION

Telephone: (+1) 619-544-5352  
Email: [infocorp@solarturbines.com](mailto:infocorp@solarturbines.com)  
Internet: [www.solarturbines.com](http://www.solarturbines.com)

