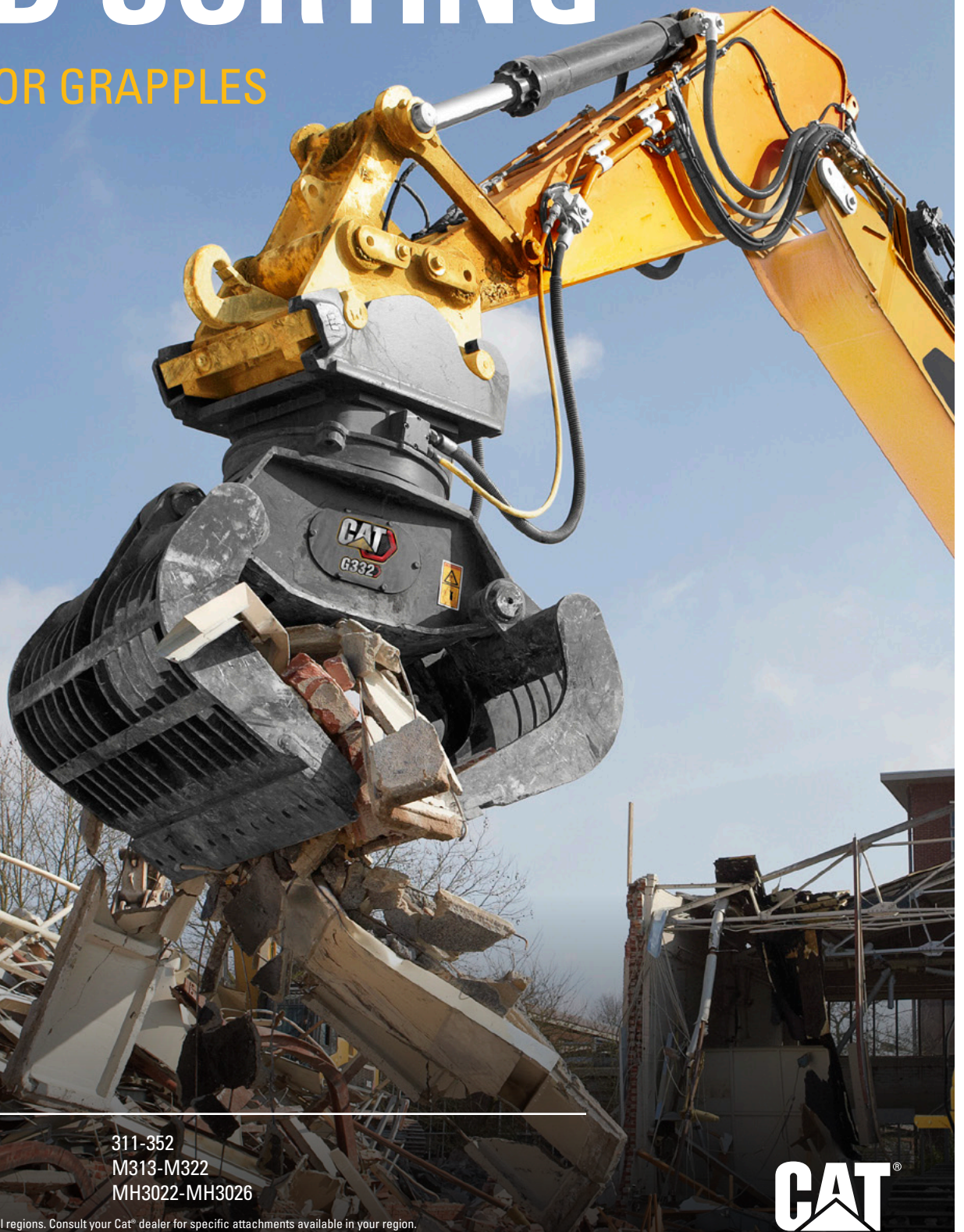


DEMOLITION AND SORTING

EXCAVATOR GRAPPLES



Tracked Excavators
Wheeled Excavators
Material Handlers

311-352
M313-M322
MH3022-MH3026

Not all attachments are available in all regions. Consult your Cat® dealer for specific attachments available in your region.



CAT[®]

DEMOLITION AND SORTING

EXCAVATOR GRAPPLES

Cat[®] Demolition and Sorting Grapples are designed for fast, productive material handling. Capable of high-volume, production loading and precise sorting, they enhance the productivity and efficiency of your operation. The grapples can handle anything from primary and secondary demolition to waste to recycling.



GRAPPLES TO FIT YOUR NEEDS

Whether you need a grapple for a few hours a week or for continuous use in tough applications, there is a demolition and sorting grapple for you. With a range of capacities, shell types, and rotation capabilities, there is a solution for your loading, recycling, transfer site, or demolition needs and more.

- + G300 DEMOLITION AND RECYCLING GRAPPLES
- + G300 WASTE HANDLING GRAPPLES
- + G300 GC UTILITY GRAPPLES
- + G200 GC UTILITY GRAPPLES



PRECISE CONTROL

Move full loads of material at peak efficiency with your demolition and sorting grapple.

POWERFUL PERFORMANCE

These grapples have the power to sort all day or to handle tough, demolition materials with ease. Your grapple's performance isn't something you need to worry about from job to job.

DURABLE AND TOUGH

Designed with real world tasks and applications in mind. High-strength steel and rotation power give it the ability to strip down entire structures while keeping operators safe in the cab.



GRAPPLE SELECTION

FIND THE BEST TYPE FOR YOU

Certain grapple options are best suited to specific materials, applications, or usage amount. Choose a grapple to fit your operation's needs for maximum efficiency.



DEMOLITION AND RECYCLING GRAPPLES

Demolition and recycling grapples are optimal for severe applications such as primary and secondary demolition. These grapples are primed to handle stripping a building or structure, taking it down, and sorting and loading the debris on site. They are also meant for frequent use. The grapple capacities are optimized to deliver high productivity as a great return on investment.



WASTE HANDLING GRAPPLES

Waste Handling Grapples can be identified by the WH in their name. They can handle 33-150% more material than the demolition and recycling models of the same size.



GC UTILITY GRAPPLES

GC utility grapples are designed to be a great low cost per hour solution for your occasional needs. These grapples are lighter than the demolition and recycling models and are ideal for sorting, loading and unloading, and light material handling.

GRAPPLE SELECTION

ROTATING OR

NON-ROTATING

The naming of demolition and sorting grapples indicates their rotation capability. The 300 series grapples have full rotation capability, while the 200 series are static. Both have their advantages depending on the type of work.



ROTATION CAPABILITY

G300 grapples offer 360°, bidirectional rotation with no limitations. These are best in demolition and other severe applications where demolished materials may prevent the excavator from operating close to the pile. G200 non-rotating grapples are intended for use with Tiltrotators. They are optimal for lighter applications and occasional use.



PRECISE CONTROL

HANDLE MATERIAL BIG AND SMALL

Demolition and sorting grapples give you the ability to move production-sized loads or pick, sort, and place individual pieces from a pile. Load control is achieved with the single cylinder syncing both shells. The base edge of the shells has complete, edge-to-edge contact for maximum grip and load handling.

POWERFUL PERFORMANCE COMBINING EFFICIENCIES AND PRODUCTIVITY

Get the most out of your grapple with a high torque motor, longer service intervals, and a single, large-bore cylinder with high clamping force for faster cycle times. The grapple's shell profile has zero clearance allowing it to work closely to container edges and walls, access corners of trucks and trailers, and reach 90 degree angles.



LOAD HOLDING VALVE

The load holding valve plays a critical role in the grapple. It maintains pressure on the cylinder and load without the operator constantly engaging the close function, which is more ergonomic and comfortable for the operator. In addition, it keeps material secure in case of hydraulic pressure loss or hose damage for added safety. When active, oil flow to the grapple is blocked, which reduces fuel consumption. This feature is available on select grapples.



Rely on your grapple to excel in the toughest applications. The high-strength, reinforced shells are made to handle tasks from primary and secondary demolition to waste and recycling.

DURABLE AND TOUGH

- + REINFORCED SHELLS
- + VERSATILE USE
- + ABRASION-RESISTANT EDGES

DURABILITY YOU CAN COUNT ON

TOUGHNESS YOU EXPECT





EASY TO MAINTAIN

KEEP YOUR GRAPPLE WORKING

Demolition and sorting grapples are easy to maintain daily and over time. Grease points are easily accessible for daily servicing. Maintenance panels are easy to remove and have inner dust seals protecting the integral internal components. Cutting edges can be flipped around for double the usage prior to replacement. Good maintenance practices over time will increase the life of your grapple.



Grapple Anatomy



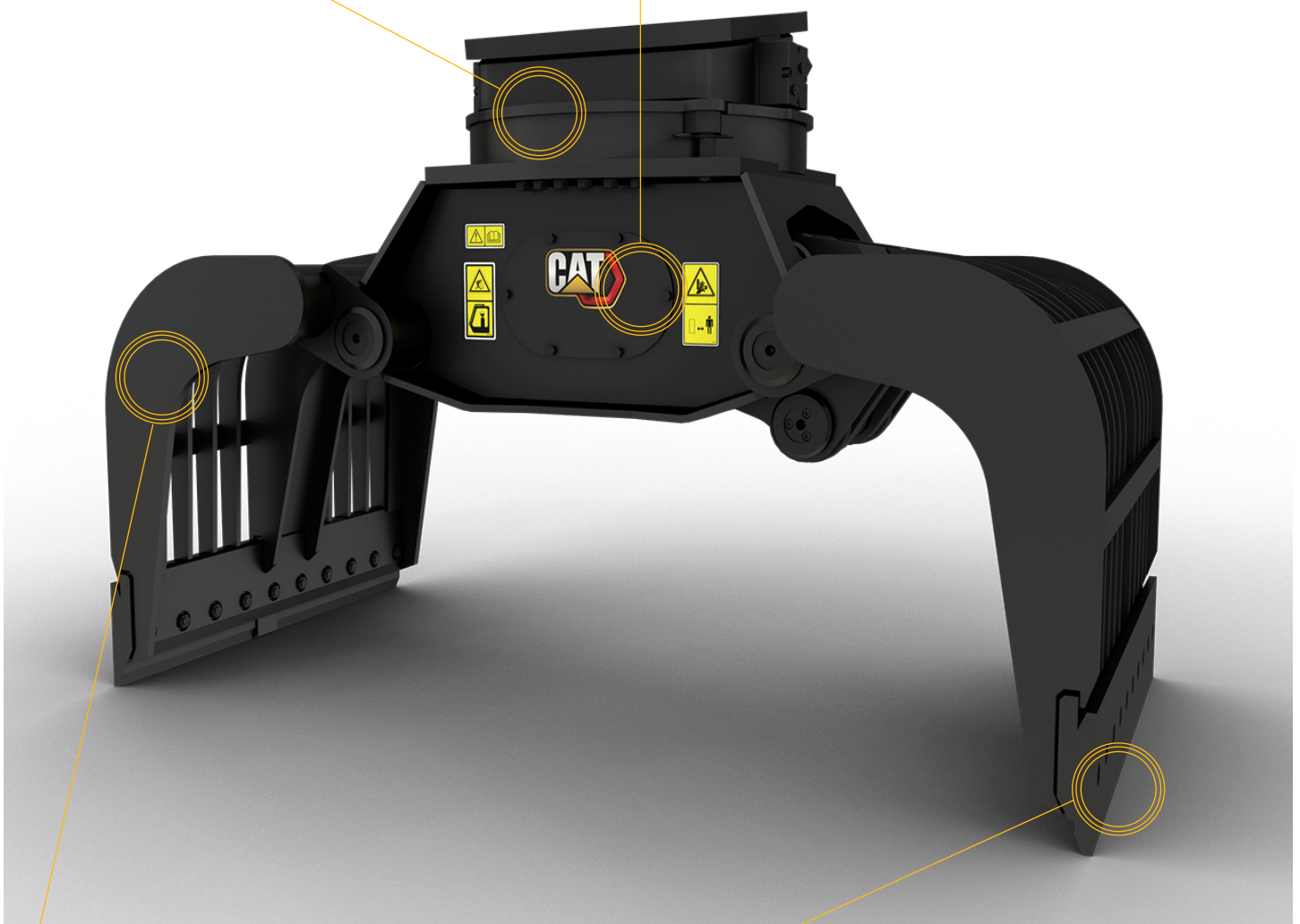
ROTATION SYSTEM

Rotation system on G300 models provides 360° bidirectional rotation capability. Grapple can be aligned without moving machine.



CYLINDER

Single-cylinder design requires less oil and has faster cycle times and more closing force.



SHELL

Shell profile is optimized for zero clearance from cutting edge against vertical walls and edges. Reinforced areas of shell allow grapples to work in demanding applications.



EDGES

Bolt-on edges cut through materials with ease. Bolts are countersunk to prevent interference with material flow.

GRAPPLE SELECTION

SHELLS FOR EVERY APPLICATION



SHELL TYPES



SKELETON SHELL

Suited for primary and secondary demolition and other harsh applications.



CLOSED SHELL

Best when used in high-volume processing and sorting applications for light material densities.



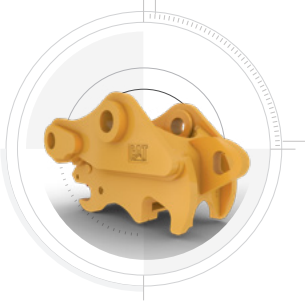
PERFORATED SHELL

Largest capacity and best when used in high-volume processing and sorting applications for light material densities.

PAIR YOUR GRAPPLE WITH A COUPLER FOR ADDED VERSATILITY

Having a coupler in your fleet brings a new level of productivity. No matter the coupler type, it allows for easier switching between attachments and sharing attachments across machines of similar sizes.

PIN GRABBER



CW DEDICATED



S TYPE



FIXED TOP GRAPPLES

Grapples with fixed tops are compatible with CW dedicated couplers. The fixed top eliminates the need for an additional bracket on the grapple to be compatible with the coupler's interface. This creates an overall lower profile and lighter combination for more stability while handling production-sized loads.

**HYDRAULIC CONNECTING
S TYPE**



TILTROTATORS





PL161 ATTACHMENT LOCATOR

ATTACHMENT TRACKING MADE EASY

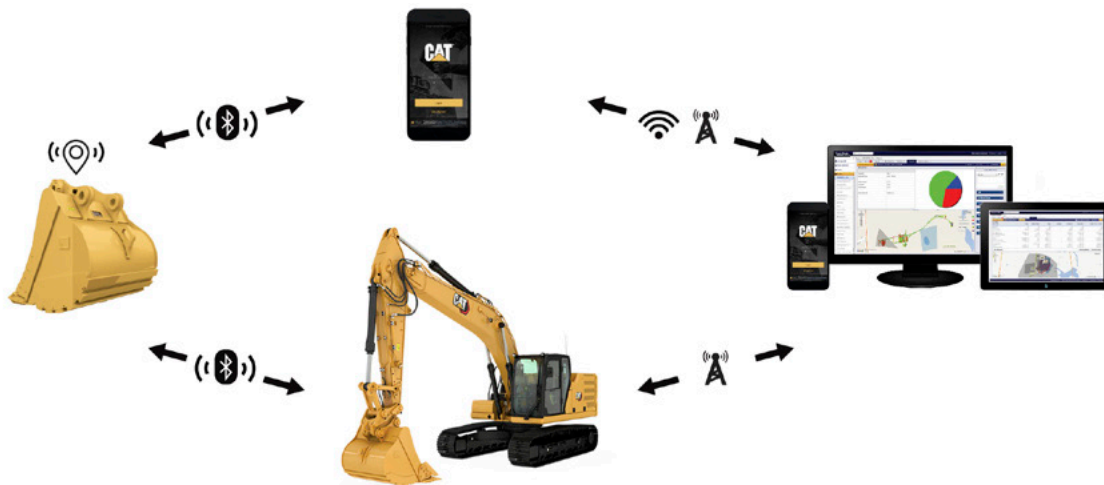
Cat PL161 Attachment Locator is the most advanced OEM integrated solution for attachment tracking. The PL161 mounts easily to your attachments to track location and utilization without interfering with the work it's doing.

WORK TOOL RECOGNITION

Save more time and energy with the available work tool recognition feature. A simple shake of the attached tool confirms its identity; it also ensures all the attachment settings are correct so you can get to work quickly and efficiently. Recognition features available on select machine models.

ASSET SECURITY

Keep your assets secure. Attachments with an asset tracker send an alert if they leave an easy-to-setup site boundary.



HOW IT WORKS

WITH CAT APP

- + Cat App will scan for PL161 modules within range, using Bluetooth® technology on your mobile device.
- + Cat App will capture the GPS location of your mobile device.
- + Cat App will send location updates accessible in VisionLink® or online through My.Cat.com, using cellular and Wi-Fi connectivity.

WITH YOUR MACHINE

- + PL161 sends a signal to the Bluetooth receiver (PL542 or Bluetooth Transceiver) on the machine.
- + Location updates are sent to the VisionLink and My.Cat.com applications, using cellular and satellite connectivity.

DEMOLITION AND SORTING GRAPPLES SPECIFICATIONS

Not all grapples are available in all regions. Consult your Cat dealer for details.

See cat.com for complete list of specifications and machine compatibility.

Model	Part No.	Shell Type	Recommended Carrier Weight Range	Capacity		Weight		Shell, Open		Shell Width	
			Metric Tons	L	yd ³	kg	lb	mm	in	mm	in
G212 GC	587-8632	Perforated	10-15	400	0.52	597	1,316	1788	70.39	850	33.46
	587-8643	Perforated	10-15	400	0.52	633	1,396	1800	70.87	850	33.46
	587-8639	Perforated	10-15	400	0.52	641	1,413	1800	70.87	850	33.46
G213 GC	587-8648	Perforated	12-16	450	0.59	665	1,466	1800	70.87	950	37.40
	587-8655	Perforated	12-16	450	0.59	684	1,508	1800	70.87	950	37.40
	587-8652	Perforated	12-16	450	0.59	692	1,526	1800	70.87	950	37.40
G217 GC	587-8659	Perforated	15-19	600	0.78	895	1,973	2000	78.74	1000	39.37
	587-8658	Perforated	15-19	600	0.78	902	1,989	2000	78.74	1000	39.37
	587-8657	Perforated	15-19	600	0.78	924	2,037	2000	78.74	1000	39.37
G312 GC	587-8713	Perforated	11-15	400	0.52	814	1,795	1788	70.39	850	33.46
	587-8715	Perforated	11-15	400	0.52	865	1,907	1788	70.39	850	33.46
G313 GC	587-8718	Perforated	12-17	450	0.59	845	1,863	1800	70.87	950	37.40
	587-8719	Perforated	12-17	450	0.59	895	1,973	1800	70.87	950	37.40
G314	587-8963	Skeleton	12-18	375	0.49	1060	2,337	1800	70.87	850	33.46
G317 GC	587-8720	Perforated	17-25	600	0.78	1142	2,518	2000	78.74	1000	39.37
	587-8721	Perforated	17-25	600	0.78	1200	2,646	2000	78.74	1000	39.37
G318	587-8965	Skeleton	18-25	550	0.72	1310	2,888	2000	78.74	1000	39.37
	587-8966	Perforated	18-25	600	0.78	1308	2,884	2000	78.74	1000	39.37
	595-1393	Closed	18-25	600	0.78	1323	2,917	8000	78.74	1000	39.40
G318 WH	587-8970	Closed	20-25	800	1.05	1447	3,190	2200	86.61	1100	43.31
	587-8975	Perforated	20-25	800	1.05	1447	3,190	2200	86.61	1100	43.31
	587-8976	Perforated	20-25	1100	1.44	1619	3,569	2200	86.61	1500	59.06
G324	587-8977	Skeleton	23-30	750	0.98	1787	3,940	2200	86.61	1100	43.31
	587-8978	Perforated	23-30	800	1.05	1732	3,818	2200	86.61	1100	43.31
G324 WH	587-8985	Perforated	23-30	1500	1.96	2004	4,418	2700	106.30	1350	53.15
	587-8986	Perforated	23-30	1800	2.35	2104	4,639	2700	106.30	1550	61.02
	587-8988	Perforated	23-30	2000	2.62	2205	4,861	2700	106.30	1750	68.90
G332	587-8991	Skeleton	30-40	850	1.11	2073	4,570	2200	86.61	1350	53.15
	587-8994	Perforated	30-40	900	1.18	2038	4,493	2200	86.61	1350	53.15
G345	608-0756	Skeleton	30-65	1000	1.31	2421	5,337	2350	92.52	1350	53.15

DEMOLITION AND SORTING GRAPPLES FEATURE COMPARISONS

Options by grapple vary. Consult your Cat dealer for further details.

See cat.com for complete list of specifications and machine compatibility.

Model	Part No.	Shell Type	Applications					Compatibility						
			Demolition	Recycling	Waste Handling	Water and Sewer	General Construction	Pin-on	Pin Grabber	CW Dedicated	S Type	Hydraulic Connecting S Type	CW Dedicated	Tiltrotator
G212 GC	587-8632	Perforated	X	X	○	●	●	X	X	✓	X	X	X	X
	587-8643	Perforated	X	X	○	●	●	X	X	X	X	X	X	✓
	587-8639	Perforated	X	X	○	●	●	X	X	X	X	X	X	✓
G213 GC	587-8648	Perforated	X	X	○	●	●	X	X	✓	X	X	X	X
	587-8655	Perforated	X	X	○	●	●	X	X	X	X	X	X	✓
	587-8652	Perforated	X	X	○	●	●	X	X	X	X	X	X	✓
G217 GC	587-8659	Perforated	X	X	○	●	●	X	X	✓	X	X	X	X
	587-8658	Perforated	X	X	○	●	●	X	X	X	X	X	X	✓
	587-8657	Perforated	X	X	○	●	●	X	X	X	X	X	X	✓
G312 GC	587-8713	Perforated	○	●	○	●	●	✓	✓	X	✓	✓	X	X
	587-8715	Perforated	○	●	○	●	●	X	X	X	X	X	✓	X
G313 GC	587-8718	Perforated	○	●	○	●	●	✓	✓	X	✓	✓	X	X
	587-8719	Perforated	○	●	○	●	●	X	X	X	X	X	✓	X
G314	587-8963	Skeleton	●	○	X	○	○	✓	✓	X	✓	✓	X	X
G317 GC	587-8720	Perforated	○	●	○	○	●	✓	✓	X	✓	✓	X	X
	587-8721	Perforated	○	●	○	○	●	X	X	X	X	X	✓	X
G318	587-8965	Skeleton	●	○	X	○	○	✓	✓	✓	✓	✓	X	X
	587-8966	Perforated	○	●	○	○	●	✓	✓	✓	✓	✓	X	X
	595-1393	Closed	X	●	○	○	●	✓	✓	✓	✓	✓	X	X
G318 WH	587-8970	Closed	X	○	●	X	X	✓	✓	✓	✓	✓	X	X
	587-8975	Perforated	X	○	●	X	X	✓	✓	✓	✓	✓	X	X
	587-8976	Perforated	X	○	●	X	X	✓	✓	✓	✓	✓	X	X
G324	587-8977	Skeleton	●	○	X	○	○	✓	✓	✓	✓	✓	X	X
	587-8978	Perforated	○	●	○	○	●	✓	✓	✓	✓	✓	X	X
G324 WH	587-8985	Perforated	X	○	●	X	X	✓	✓	✓	✓	✓	X	X
	587-8986	Perforated	X	○	●	X	X	✓	✓	✓	✓	✓	X	X
	587-8988	Perforated	X	○	●	X	X	✓	✓	✓	✓	✓	X	X
G332	587-8991	Skeleton	●	○	X	○	○	✓	✓	✓	✓	✓	X	X
	587-8994	Perforated	○	●	○	○	●	✓	✓	✓	✓	✓	X	X
G345	608-0756	Skeleton	●	○	○	○	●	✓	✓	✓	✓	✓	X	X

● – optimal ○ – acceptable X – not recommended ✓ – match

For more complete information on Cat products, dealer services and industry solutions, visit us on the web at www.cat.com.

© 2022 Caterpillar. All Rights Reserved.

VisionLink is a trademark of VirtualSite Solutions LLC, registered in the United States and in other countries.

Materials and specifications are subject to change without notice. Featured machines in photos may include additional equipment. See your Cat dealer for available options.

CAT, CATERPILLAR, LET'S DO THE WORK, their respective logos, "Caterpillar Corporate Yellow," the "Power Edge" and Cat "Modern Hex" trade dress as well as corporate and product identity used herein, are trademarks of Caterpillar and may not be used without permission.
www.cat.com www.caterpillar.com

GEDQ9306-01
Replaces GEDQ9306-00,
GEHQ0203-01 and AEXQ7119-03
(Afr-ME, Aus-NZ, CIS, Europe,
N Am, S Am, Turkey)

