



Cat[®] TH255C

TELEHANDLER

Specifications

Engine

Model	TD 2.9L L4*	
Gross Power	55 kW	74 hp
Maximum Torque @ 1,800 rpm	260 N·m	193 lbf·ft
Displacement	2.9 L	177 in ³

*U.S. EPA Tier 4 Final emission standards

Weights

Operating Weight with Carriage and Forks	4999 kg	11,000 lb
--	---------	-----------

Operating Specifications

Rated Load Capacity	2495 kg	5,500 lb
Maximum Lift Height	5600 mm	18 ft 4 in
Maximum Forward Reach	3300 mm	10 ft 11 in
Capacity at Maximum Height	1361 kg	3,000 lb
Capacity at Maximum Reach	771 kg	1,700 lb
Turning Radius over Tires		
12 × 16.5 Tires	3200 mm	127 in
14 × 17.5 Tires	3100 mm	125 in
Top Travel Speed		
12 × 16.5 Tires	24 km/h	15 mph
14 × 17.5 Tires	27 km/h	17 mph

Service Refill Capacities

Fuel Tank	91 L	24 gal
Hydraulic System	91 L	24 gal

Tires

Standard	12.00 × 16.5	
Optional	14.00 × 17.5	
	10.5 × 18	
	33 × 12-20 non-marking	

Brakes

Service Brakes	Inboard wet disc brakes on front axle
Parking Brakes	Wet disc spring-applied hydraulic release

- Light on dash indicates when brake is on.

Axles

- Planetary on front and rear axles.
- High bias limited slip differential on front axle.

Hydraulic System – Implement

Pump Type	Gear pump	
Maximum System Pressure	241 bar	3,500 psi
Maximum Pump Flow	72.3 L/min	19 gal/min

- Auxiliary Hydraulic Circuit used for all attachments equipped with cylinders or other hydraulic components. Consists of valves, controls, and hydraulic lines.

Transmission

Transmission	Hydrostatic
Forward	Variable Speed
Reverse	Variable Speed

Boom Performance

Boom Up	6.8 Seconds	
Boom Down	4.6 Seconds	
Tele In	3.8 Seconds	
Tele Out	6.7 Seconds	
Bucket Dump	2.5 Seconds	
Bucket Crowd	2.0 Seconds	
Drawbar Pull (Loaded)	38.7 kN	8,700 lb

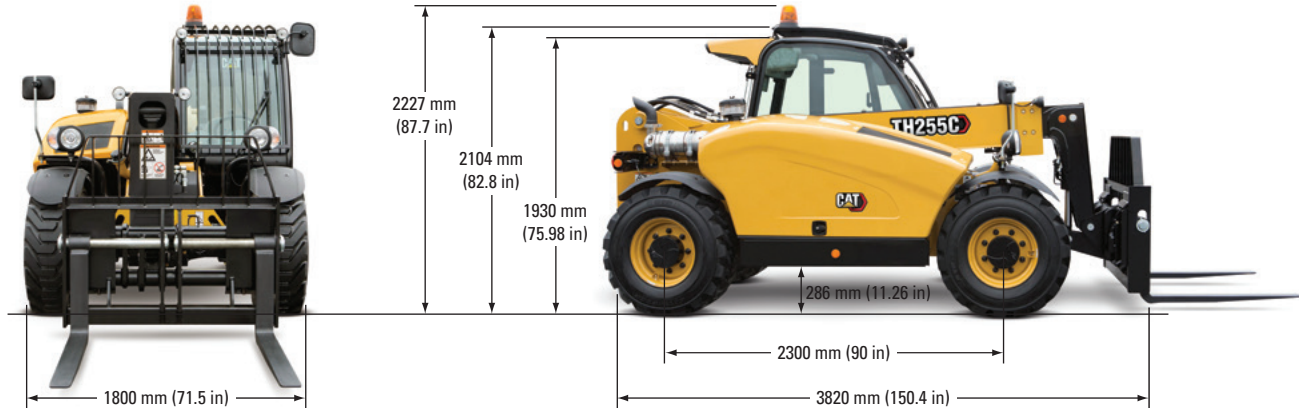
Instruments

- Indicators for machine hours, fuel-level, steer mode, steering pressure, battery charge, coolant temperature, parking brake and engine pre-heat.
- Reverse motion alarm.
- Panel and switches are illuminated for night operation.

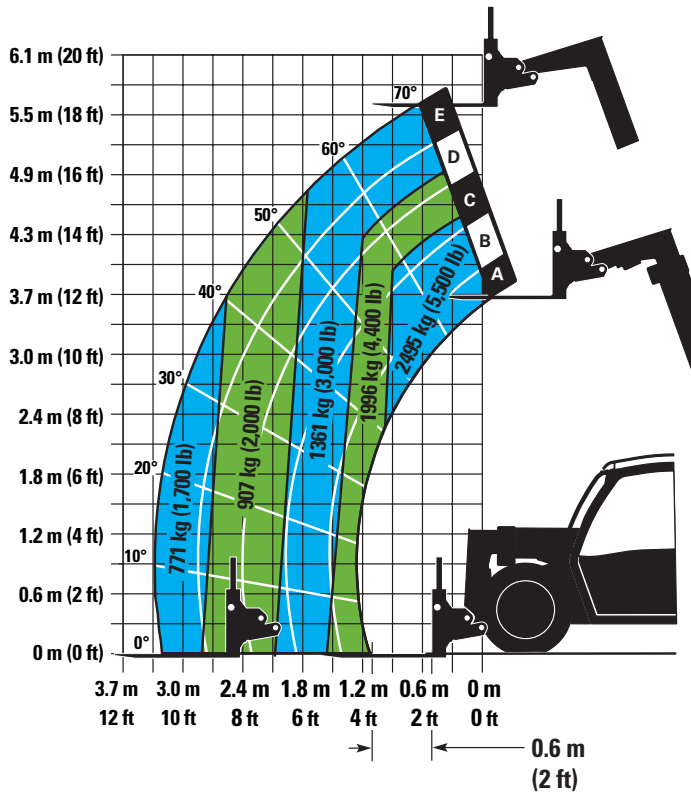
TH255C Telehandler

Dimensions

All dimensions are approximate.



Load Chart and Dimensions



IMPORTANT

Rated lift capacities shown are with machine equipped with carriage and pallet forks. The machine must be level on a firm surface with undamaged, properly inflated tires. Machine specifications and stability are based on rated lift capacities at specific boom angles and boom lengths. (If specifications are critical, the proposed application should be discussed with your dealer.)

DO NOT exceed rated lift capacity loads, as unstable and dangerous machine conditions will result.

DO NOT tip the machine forward to determine the allowable load.

Use only JLG approved attachments with proper material handler model/attachment load capacity charts displayed in the operator's cab.

Due to continuous product improvements, machine specifications and/or equipment changes may be made without prior notification. This machine meets or exceeds ANSI/ITSDF B56.6-2016 as originally manufactured for intended applications.

For more complete information on Cat products, dealer services, and industry solutions, visit us on the web at www.cat.com

© 2021 Caterpillar
All rights reserved

Materials and specifications are subject to change without notice. Featured machines in photos may include additional equipment. See your Cat dealer for available options.

CAT, CATERPILLAR, LET'S DO THE WORK, their respective logos, "Caterpillar Corporate Yellow," the "Power Edge" and Cat "Modern Hex" trade dress as well as corporate and product identity used herein, are trademarks of Caterpillar and may not be used without permission.

AEHQ7078-03 (08-2021)
Replaces AEHQ7078-02
(N Am)

