



# Cat<sup>®</sup> TH255C

TELEHANDLER

## Specifications

### Engine

Model	TD 2.9L L4*	
Gross Power	55 kW	74 hp
Maximum Torque @ 1,800 rpm	260 N·m	193 lbf·ft
Displacement	2.9 L	177 in <sup>3</sup>

\*U.S. EPA Tier 4 Final emission standards

### Weights

Operating Weight with Carriage and Forks	4999 kg	11,000 lb
--	---------	-----------

### Operating Specifications

Rated Load Capacity	2500 kg	5,500 lb
Maximum Lift Height	5600 mm	18 ft 4 in
Maximum Forward Reach	3300 mm	10 ft 11 in
Capacity at Maximum Height	1360 kg	3,000 lb
Capacity at Maximum Reach	771 kg	1,700 lb
Turning Radius over Tires		
12 × 16.5 Tires	3200 mm	127 in
14 × 17.5 Tires	3100 mm	125 in
Top Travel Speed		
12 × 16.5 Tires	24 km/h	15 mph
14 × 17.5 Tires	27 km/h	17 mph

### Service Refill Capacities

Fuel Tank	91 L	24 gal
Hydraulic System	91 L	24 gal

### Tires

Standard	12.00 × 16.5	
Optional	14.00 × 17.5	
	10.5 × 18	
	33 × 12-20 non-marking	

### Brakes

Service Brakes	Inboard wet disc brakes on front axle
Parking Brakes	Wet disc spring-applied hydraulic release

- Light on dash indicates when brake is on.

### Axles

- Planetary on front and rear axles.
- High bias limited slip differential on front axle.

### Hydraulic System – Implement

Pump Type	Gear pump	
Maximum System Pressure	241 bar	3,500 psi
Maximum Pump Flow	72.3 L/min	19 gal/min

- Auxiliary Hydraulic Circuit used for all attachments equipped with cylinders or other hydraulic components. Consists of valves, controls, and hydraulic lines.

### Transmission

Transmission	Hydrostatic
Forward	Variable Speed
Reverse	Variable Speed

### Boom Performance

Boom Up	6.8 Seconds	
Boom Down	4.6 Seconds	
Tele In	3.8 Seconds	
Tele Out	6.7 Seconds	
Bucket Dump	2.5 Seconds	
Bucket Crowd	2.0 Seconds	
Drawbar Pull (Loaded)	38.7 kN	8,700 lb

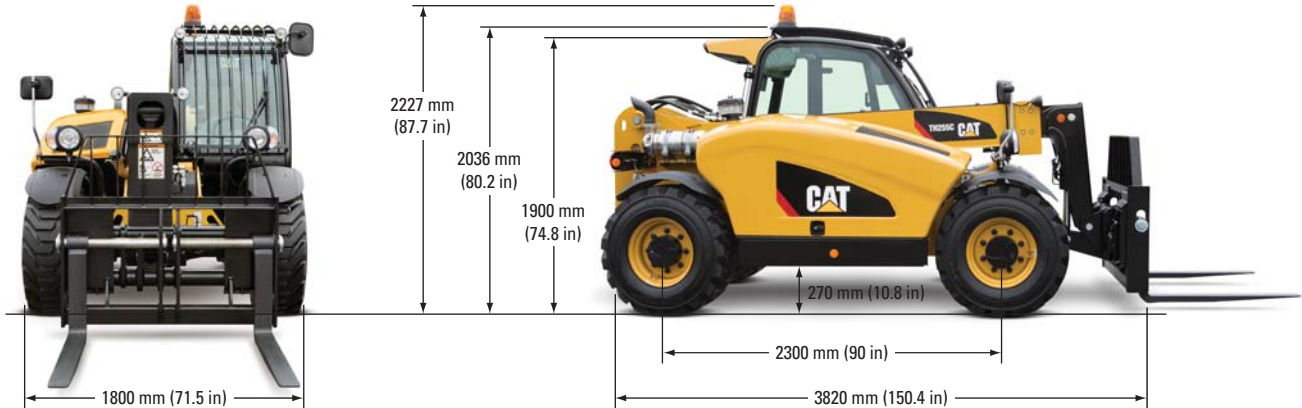
### Instruments

- Indicators for machine hours, fuel-level, steer mode, steering pressure, battery charge, coolant temperature, parking brake and engine pre-heat.
- Reverse motion alarm.
- Panel and switches are illuminated for night operation.

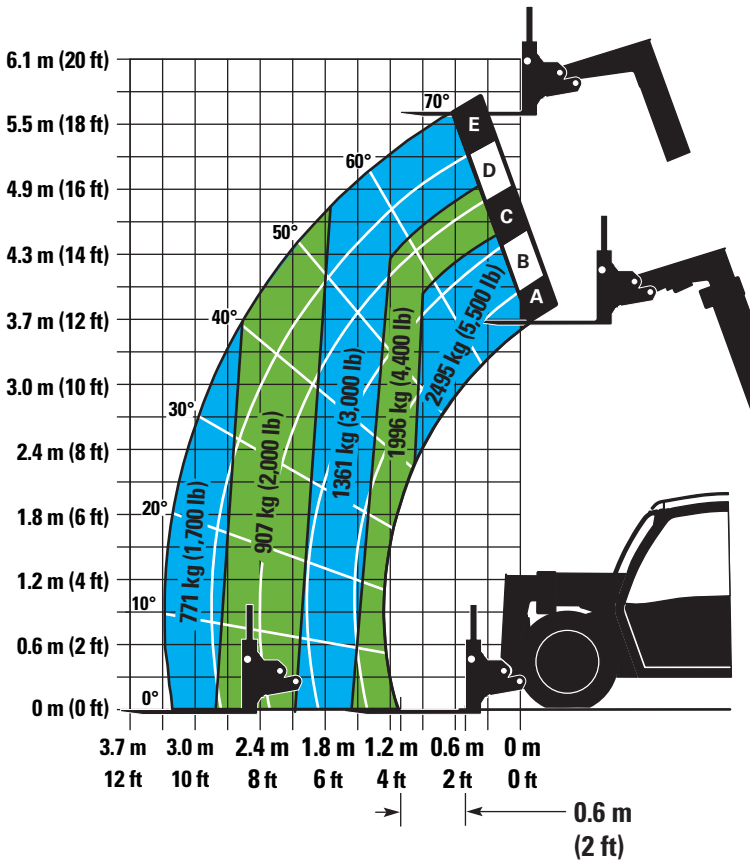
# TH255C Telehandler

## Dimensions

All dimensions are approximate.



## Load Chart and Dimensions



### IMPORTANT

Rated lift capacities shown are with machine equipped with carriage and pallet forks. The machine must be level on a firm surface with undamaged, properly inflated tires. Machine specifications and stability are based on rated lift capacities at specific boom angles and boom lengths. (If specifications are critical, the proposed application should be discussed with your dealer.)

DO NOT exceed rated lift capacity loads, as unstable and dangerous machine conditions will result.

DO NOT tip the machine forward to determine the allowable load.

Use only JLG approved attachments with proper material handler model/attachment load capacity charts displayed in the operator's cab. OSHA requires all rough terrain forklift operators be trained according to OSHA 29 CFR 1910.178 (1).

*Due to continuous product improvements, machine specifications and/or equipment changes may be made without prior notification. This machine meets or exceeds ANSI/ITSDF B56.6-2005 as originally manufactured for intended applications.*

For more complete information on Cat® products, dealer services, and industry solutions, visit us on the web at [www.cat.com](http://www.cat.com)

© 2014 Caterpillar  
All Rights Reserved  
Printed in U.S.A.

Materials and specifications are subject to change without notice. Featured machines in photos may include additional equipment. See your Cat dealer for available options.

CAT, CATERPILLAR, SAFETY.CAT.COM, their respective logos, "Caterpillar Yellow" and the "Power Edge" trade dress, as well as corporate and product identity used herein, are trademarks of Caterpillar and may not be used without permission.

AEHQ7078-02 (01-14)  
Replaces AEHQ7078-01

