

826H

Landfill Compactor



Engine

Engine Model	Cat® C15 ACERT™	
Gross Power	299 kW	401 hp
Torque Rise	19%	
Peak Torque – Gross	1881 N-m	1,387 ft-lb

Weights

Operating Weight	36 967 kg	81,498 lb
------------------	-----------	-----------

826H Features

Performance

Designed to work in poor underfoot conditions, the 826H has a power-to-weight ratio that balances quick acceleration and directional changes with excellent compaction characteristics.

Productivity Enhancements

CAES offers real-time feedback on compaction, eliminating missed areas and limiting excessive compaction in others.

Controlling Your Costs

The 826H saves fuel by shutting down the engine during long idle periods. Guarding options and an auto reversing fan reduce clean out downtime. In addition, rebuild options and Cat Reman parts can extend the life of a machine while reducing costs.

Operator Comfort

Safety starts with an alert, comfortable operator. Air conditioning and filtered air keep the operator cool and on task. Ergonomic controls are easy to use with unobstructed views to the front and excellent visibility to the immediate work area.

Serviceability

Easy access to service points promotes daily checking, cleaning of key areas like the radiator, and greasing critical joints – all of which lead to longer component life and uptime.

Sustainability

Landfills are an important part of our society, helping us control refuse, protecting our water supplies and our air quality. Running an 826H landfill compactor from Caterpillar can support less fuel burn with efficiency tools like CAES, and a machine that can be rebuilt for a second or possibly third life.

Contents

Quality	3
Power Train – Engine	4
Drive Train	5
Cooling Systems	6
826H Cab	7
Machine Guarding	8
Cat Wheels and Tips	9
Blades	10
Safety	11
Service Convenience	12
Sustainability	13
826H Specifications	14
826H Standard Equipment	17
826H Optional Equipment	18



Caterpillar put the first 826 landfill compactor to work in 1978. Since then, customers like you have helped us improve the safety, reliability and productivity of this very popular machine.

Our H Series model has enhanced visibility and comfort from a new ergonomic cab. Operators have greater line of sight to areas around the machine, and with CAES installed, the 826H has the ability to be more efficient, lowering your operating costs.

Quality

Second only to safety

Caterpillar's commitment to quality is profound. We design to a higher standard so that your business can prosper.

All of our parts are subject to quality and conformance checks, and when needed, we collaborate with suppliers early in the design phase for their knowledge and manufacturing experience.

New designs undergo Finite Element Analysis telling us where stresses congregate under loads typical of the machine's application. New castings are virtually monitored to evaluate fill quality and cooling characteristics.

New product introductions at Caterpillar are guided by your voice, the voice of our dealers, their mechanics, and on the ability to physically manufacture a new design. These are just some of the criteria that make Cat products leaders in the industry and ensure long life, reliable machines for your business.

Structural Integrity

The 826H is built on structures that combine strong, load absorbing castings and box-section frames. This combination is a tried and true frame design for many Cat® products. We use computer-controlled machining to align components for hitch pin and bearing life. Frame welds are 90% robotic, consistent in quality and penetrate deep into plates. The front frame construction dissipates much of the load coming from the blade before reaching the hitch. Likewise, the rear engine end frame is absorbing torque and weight from the engine and transmission. Both frames come together at the hitch, where large hitch pins pivot on double tapered roller bearings.

Proven Components

Caterpillar designs and manufactures many of the critical components in the machine, including the transmission, axles, compactor wheels, engine and fuel systems. Most of these components have literally millions of hours demonstrating their reliability on all sorts of Cat machines and on-highway trucks.





Power Train – Engine

Unbeatable performance from proven designs

The 826H features proven Cat power train components like the C15 ACERT™ diesel engine.

Features of the Cat C15 ACERT

- A balanced, in-line, 6-cylinder diesel engine that's turbocharged and aftercooled
- 15.2 L (927.56 in³) displacement and gross power of 299 kW (401 hp) for the 826H
- ADEM™ A4 electronic control drives performance and has excellent diagnostic capability
- A compression ratio of 17:1 improves cold start and optimizes performance
- MEUI fuel injection electronically controls fuel pressure and injection timing to match load – conserving fuel by using only the minimum amount of fuel required to meet the load demand.
- Leak-free gasket technology retains engine fluids and isolates noise and vibration for better sound quality and cleanliness

Air-to-Air Aftercooling

- Provides cool, dense air to the combustion chamber for optimum power
- Cooler intake air generates fewer particulate emissions.

Engine Guarding

- The C15 is compartmentalized behind a baffle to keep out debris
- The turbocharger is heat wrapped and insulated.

Engine Idle Shutdown (EIS) – If the machine is idle for an extended time, Engine Idle Shutdown will reduce rpms then shut the engine down. For EIS to work, the machine must be in neutral with no input to the implements and the parking brake applied. EIS may be required in some areas to preserve air quality, and it will help you conserve fuel. EIS will not shutdown the air conditioner, so care should be taken with battery life.

Drive Train

Integrated design for long life and uptime

The constant direction changes, poor underfoot conditions and debris riddled environment of the landfill are easily managed by the rugged and dependable 826H drive train components.

Planetary Power Shift Transmission

Coupled to a high-capacity torque converter and the Cat C15 engine, the extreme duty planetary powershift transmission is equipped with hydraulically controlled clutches (ECPC) for optimum shifting and acceleration. There are two forward gears and two reverse gears. Shifts are smooth for best in class operator comfort and torque spikes are controlled reducing component wear.

Unlike hydrostatic machines, power shift transmissions and heavy duty axles ensure a long lasting efficient transmission of power from the engine to the wheels.

Controlled Throttle Shifting

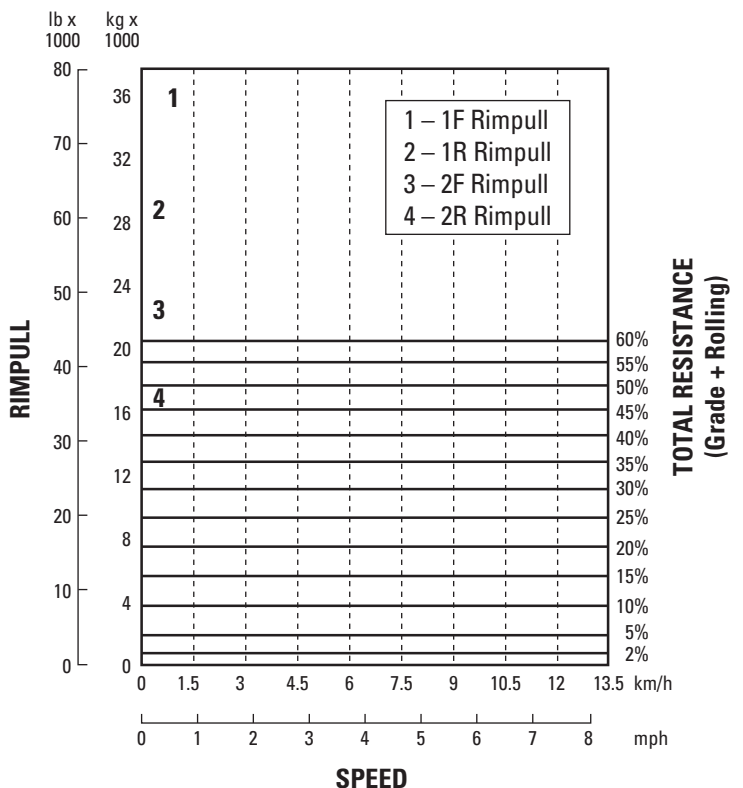
Controlled Throttle Shifting is a feature that reduces engine speed during a gear shift. Reducing engine speed during transition serves to reduce the amount of load seen by the components and it smooths the transition for improved operator comfort. The result is reduced wear and longer component life.

Heavy-Duty Axles

- Heavy-duty axles provide the life and impact resilience required for landfill applications.
- The rear axle oscillates ± 5 degrees for ride performance and load reduction to the frame.
- Gears and bearings are sized for the tough application and heat dissipation required by constant direction changes. These long life components in the final drives and differential are designed specifically for the demands of this harsh application.

Axles and No Spin Differential Lock

Cat axles take the brunt of abuse in landfill applications. The 826H has heavy duty axles with guarding to prevent damage. Both the front and rear axles can be equipped with no-SPIN differential locks. On both axles, this would turn the machine into full-time, all wheel drive. This configuration is good for long straight passes on very slippery slopes, but not a good option for close, confined spaces. The standard configuration is for a no-spin differential on the rear axle, and a slip differential on the front.





Cooling Systems

Purpose built for the harshest application on the planet

There are two critical cooling systems on the machine, one for the machine, and one for the operator.

Engine Cooling

One critical requirement for the 826H cooling system is the ability to get air. In a trash-filled environment, this isn't always easy. Caterpillar offers an auto-reversing fan that is hydraulically driven, and only works when temperatures require it. This fan reduces both sound levels and fuel use during periods of no demand. Engine coolant, transmission oil, hydraulic oil and air inlet manifold temperatures all provide input to the fan operation. Every 20 minutes, the fan reverses for 30 seconds to blow away debris accumulating on the air inlet screens helping protect the air flow and cooling capacity of the system.

Behind the fan is Caterpillar's next generation modular radiator. It has seven cores with 6 fins per inch that allow debris to pass through more readily. The extreme efficiency of this radiator eliminates the need for high-ambient service cooling packages.

Operator Cooling

Keeping operators cool also helps keep them focused. The 826H has a roof-mounted air conditioner to help keep it out of dust and debris. In spite of its location, it will require cleaning but less often, and the condenser core is easily accessible from the rear of the cab.

826H Cab

Ergonomically designed for comfort and focus

The 826H cab is designed to reduce work load, and provide a safe, comfortable work environment for those in and around the machine.

Visibility

Visibility to the work area is excellent out of windows that extend almost to the floor. The windows are laminated glass and rubber mounted for safety and sound suppression. Mirrors increase visibility down the machine sides. An optional camera and display provide visibility to the rear of the machine reducing risk to people and equipment at the drop off area.

Comfort

The cab is pressurized to keep dust out, and is sound suppressed to reduce noise levels. A precleaner can be added for extreme levels of dust. Both air conditioning and heat are standard on the machine and sized for the solar load and cab capacity.

Command Control Steering (CCS) – The 826H cab comes standard with command control steering. Unlike a conventional steering wheel, CCS requires only 50 degrees of turn to fully articulate the machine.

STIC Steer – STIC steer is optional, and controls steering by moving the implement control right or left. It's a very intuitive control, and further reduces the effort required to operate the machine.

Controls

The control pod is ergonomically designed and adjustable with finger tip control over the blade.

A throttle lock feature allows the operator to set a comfortable speed without having to keep the throttle depressed.

The machine comes standard with Automatic Blade Positioning technology. This technology positions the blade at a preset height every time the machine is put in a forward or reverse gear. The operator is saved from having to constantly raise and lower the blade every time they make a pass. Operators can override the system at any time.

ROPS/FOPS

The cab is designed with roll over and falling object protection both of which are most effective when used with the retractable seat belt.

Optional rubber mounted glass ensures a quick replacement to maximize machine uptime.





Machine Guarding

Safeguarding machine uptime

Caterpillar has 40 years of experience guarding landfill compactors, starting with the 816 first built in 1970. Even the simplest detail, like a bolt shearing, can interrupt your progress, so Caterpillar offers comprehensive guarding on its compactors.

- Power Train Guards – prevent trash build up and prevent wire, rebar and chemicals from damaging drive line components.
- Bolt Protection – all bolts located underneath the machine are protected against shearing.
- Cab Guarding – all hoses and wires underneath the cab are protected from damage.
- Striker Bars are available for both the front and rear wheels. These bars prevent trash from being carried up by the wheels.
- Cleaner Fingers for Step Tip wheels remove sticky clay and mud that would attract debris and prevent the tips from fully embedding in the waste.
- Hydraulic Tank and Steering Cylinder Guards prevent debris damage.
- Cat Axle Guard System – Almost nothing is worse than having wire or cable wrap around the axle. Caterpillar has a unique axle guarding system that protects final drives and wheel rims. The system keeps the area smooth to minimize snagging materials and widens the axle diameter to discourage wrapping.
- Radiator Guard – This heavy duty option swings out to provide access to the radiator and fan, and it protects the components from large debris.
- Cab Guard – On occasion, debris will clear the blade and climb up towards the cab window. A cab guard can redirect debris away from the front windshield.
- Front Frame Guards – prevent trash build up inside the frame where hydraulic lines are routed. Similarly, a hitch pin retainer guard prevents damage to pin plate.

Cat Wheels and Tips

Options to maximize performance and compaction

Caterpillar designs and manufactures its wheels in Aurora, Illinois, the same plant that assembles the compactors. There are two wheel sizes available, one 1016 mm (40 in) with Step Tips, and multiple types of 1219 mm (48 in) wheels.

Chopper Wheels

Chopper wheels deliver maximum compaction and traction on the landfill.

- The aggressive chopping action is provided by 28 blades per wheel.
- The staggered, chevron blade arrangement evenly distributes chopping coverage.
- Blade center gussets to help assure maximum refuse demolition.
- Front and rear wheel blades are mounted differently to maximize chopping and compaction in both forward and reverse.

Smooth Steel Wheels

In the event that Caterpillar doesn't offer a tip that meets your specific needs, we recommend you apply them to a Cat steel wheel. All of the system integration work including component life, power train, cooling and structure design is based on Cat steel wheels. Designed and manufactured by Caterpillar, these wheels integrate with the final drives, bearings and other critical components of the machine. Applying a third party wheel will change these dynamics and affect machine performance and component life. It will also prevent the use of the Cat axle guard system designed for Cat wheels. Our ultimate goal is to provide you with a machine that is safe to operate, performs reliably and stays productive as long as you need it to. Cat steel wheels can make that happen.

Step Tips

Cat Step Tips deliver dependable performance in tough waste and excellent stability on side slopes. The unique pyramid shape of the tip, with its individual step and 178 mm (7 in) offer extended wear life.

Where other tips are straight up and down, the wider base and angled surface of the Step Tip leaves the landfill surface compacted rather than disturbing or "fluffing" the material.

In addition to outstanding compaction, the Step Tip provides excellent traction even as it wears.

Each tip is made of two ultra-durable materials. The upper portion is carbon steel that is harder than previous tip offerings. The bottom of the tip is a lower carbon-content steel that is easy to weld to the wheel.



Blades

Options to meet spreading requirements



Straight Blade

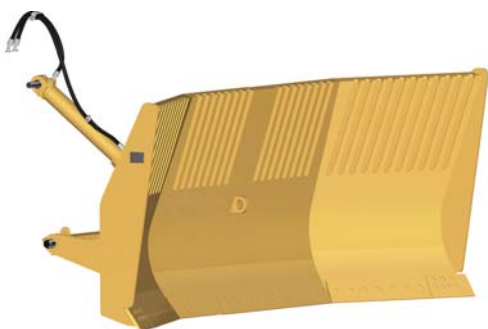
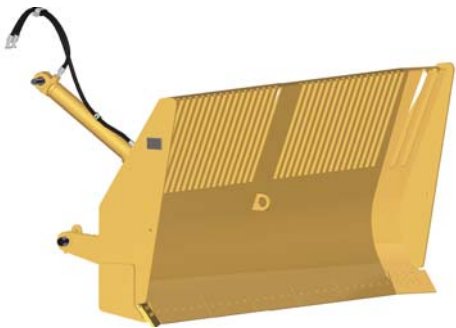
An ideal blade for most landfills with heavy duty construction. Comes equipped with a trash guard that offers good visibility and additional capacity.

Semi U-Blade

The Semi U-Blade combines the dozing benefits of the straight blade with the additional capacity and control of the U-Blade. This blade is equipped with a trash rack.

U-Blade

The best choice for large capacity hauling and spreading, the U-Blade is heavier than the other two blades with angled ends for carrying and controlling waste over longer distances.



Straight Blade		
Capacity	13 m ³	17 yd ³
Total Width	4502 mm	177 in
Height	1898 mm	74.7 in
Semi U-Blade		
Capacity	14.5 m ³	18.9 yd ³
Total Width	4490 mm	176.8 in
Height	1960 mm	77.2 in
U-Blade		
Capacity	16.7 m ³	21.8 yd ³
Total Width	4398 mm	173.1 in
Height	2075 mm	81.7 in



Safety

Safety is always our first priority

We are constantly improving our products in an effort to provide a safe work environment for the operator and those who work on your job site. Here are just a few of the safety features on the 826H.

- Visibility – Maximized by design with a sloping rear hood, large cab windows and mirrors. Visibility can be increased with the Cat Work Area Vision System (WAVS), consisting of a rear-facing camera and in-cab display.
- Lighting packages illuminate the work area at dusk or early morning and can be ordered as High Intensity Discharge lights for maximum illumination.
- Access/Egress – The 826H has handrails and wide stairways with tread plate on walkways. The cab has doors on both sides of the cab providing egress in both directions.
- Laminated glass prevents windows from shattering.
- A flashing strobe or a rotating amber beacon are options for the top of the cab.
- Two engine disconnect switches are available, one inside the cab (optional) and one inside the radiator compartment (left side) at the back of the machine.
- Guarding on key components – like the hydraulic tank, reduce the risk of debris damaging the tank and causing a spill.
- Retracting seat belt on Cat Comfort Seat. The seat is ergonomically correct promoting comfort and focus.
- Roll over and falling object protection for the operator is built into the cab structure.
- Cab guard works to prevent landfill material from impacting cab glass.
- Three levels of warning are given when a machine parameter is out of its operating range giving the operator time to take appropriate action.

Service Convenience

Designed with you in mind



In spite of its heavy duty guarding, Caterpillar has made servicing the 826H a design priority.

- Engine and power train guards are hinged and electronically actuate for access underneath the machine.
- The radiator guard and air inlet screens swing open for convenient cleaning.
- Wide walkways with accompanying hand rails provide access to air filters, the AC Condenser and the top of the engine. The air filter includes a convenient air restriction sight gauge.
- Tanks include fluid level sight gauges for daily checks. Locking service doors give access to oil level and fill, coolant sight gauge.
- For overhauls or second life rebuilds, the cab can be removed quickly without hydraulic hoses to disconnect. Quick couplers connect AC hoses for convenience.
- Optional swing out stairs on both sides of the machine provide unobstructed access to wheels and the engine compartment.
- Important machine health information is provided by the messenger display inside the cab. In the event that something is out of spec, three levels of warning are given to the operator.

Cat Product Link*

Cat Product Link is standard on the machine, and allows remote monitoring of equipment to improve overall fleet-management effectiveness. Product Link is deeply integrated into machine systems. Events and diagnostic codes, as well as hours, fuel, idle time and other detailed information are transmitted to a secure web based application, VisionLink™. VisionLink includes powerful tools to convey information to users and dealers, including mapping, working and idle time, fuel level and more.

** Product Link licensing not available in all areas. Please consult your Cat dealer for availability.*



Sustainability

Our commitment to you, your business and future generations is as strong as the machines we build.

Our effort to build machines that live longer, use fewer resources, and produce fewer emissions is only the start. Our plants, like the Aurora facility where the 826H is built, are conserving precious energy and resources with solar power, roof top gardens, and comprehensive recycle programs.

Sustainability is profitable. Our cleaner environment helps us control quality on the assembly line and build better products. It reduces our energy demand and our output to landfills creating a better environment for all.

We can similarly help your business with machines that lead the industry in balancing fuel use with productivity demands. Each generation of Cat product is more emissions friendly than the last, helping reduce the carbon foot print of your fleet. We can also offer people and technologies that train your operators to be more efficient and protect the environment at service time. Technologies like Cat Product Link let your Cat dealer know what machines are coming due for service and what parts are required. This allows your dealer to optimize the mileage and fuel use of their service fleet – while providing you with more efficient and timely service.

We welcome the opportunity to support your business and its sustainable growth.

Cat Reman

Cat Reman offers customers a high quality, low cost choice in replacement parts. Parts in good condition but at the end of their service life are reconditioned to like-new quality by Caterpillar. Cat Reman products have the same warranty as new parts, and offer the benefit of limiting waste and consumption of raw materials.

826H Specifications

Engine

Engine Model	Cat® C15 ACERT™	
Gross Power	299 kW	401 hp
Flywheel Power	264 kW	354 hp
Torque Rise	19%	
Bore	137 mm	5.4 in
Stroke	171 mm	6.7 in
Displacement	15.2 L	927.56 in ³

Transmission

Forward 1	5.8 kph	3.6 mph
Forward 2	9.7 kph	6.03 mph
Reverse 1	6.6 kph	4.1 mph
Reverse 2	10.6 kph	6.59 mph

Hydraulic System

Vane Pump Output @ 2,000 rpm and 6900 kPa (1,000 psi)	93 L/min	93 gal/min
Relief Valve Setting	24 175 kPa	3,506.29 psi
Lift Cylinder Bore × Stroke	120.65 mm × 915 mm	4.74 in × 36.02 in

Hydraulic Steering System

Piston Pump Output @ 2,000 rpm and 7000 kPa (1,015 psi)	186 L/min	49 gal/min
Relief Valve Setting	24 125 kPa	3,499 psi
Steering Cylinder Bore × Stroke	114.3 mm × 576 mm	4.49 in × 22.68 in
Steering Angle	±42°	

Axles

Front	Planetary – Fixed	
Oscillating Rear	±5°	

Brakes

Standards	Meet OSHA, SAE J1473 DEC84, ISO 3450:1985 standards	
-----------	---	--

STEP Tips

Diameter with Tips	1888 mm	6.19 ft
Tips per Wheel	30	

Wheels – Chevron-Pattern, Chopper Blades

Drum Width	1200 mm	3.94 ft
Drum Diameter	1532 mm	5.03 ft
Diameter with Blades	1850 mm	6.07 ft
Blades per Wheel	24	

Straight Blade

Capacity	13 m ³	17 yd ³
Width Over End Bits	4502 mm	14.77 ft
Moldboard Length	4311 mm	14.14 ft
Height	1898 mm	6.23 ft

U-Blade

Capacity	16.7 m ³	21.84 yd ³
Height	2075 mm	6.81 ft
Width Over End Bits	4398 mm	14.43 ft
Moldboard Straight Length	2075 mm	6.81 ft
Moldboard U-Length	1248 mm	4.09 ft
U-Angle	25°	

Semi U-Blade

Capacity	14.5 m ³	18.97 yd ³
Height	1960 mm	6.43 ft
Width Over End Bits	4490 mm	14.73 ft
Moldboard Straight Length	3634 mm	11.92 ft
Moldboard Semi U-Length	461 mm	1.51 ft
Semi U-Angle	25°	

Service Refill Capacities

Fuel Tank	672 L	177.52 gal
Cooling System	82 L	21.66 gal
Crankcase	34 L	8.98 gal
Transmission	62 L	16.38 gal
Differentials and Final Drives – Front	90 L	23.78 gal
Differentials and Final Drives – Rear	90 L	23.78 gal
Hydraulic Tank	88 L	23.25 gal

Weights

Operating Weight	36 967 kg	81,498 lb
------------------	-----------	-----------

Cab

- | | |
|-----------|-----------------------------|
| ROPS/FOPS | Meets SAE and ISO standards |
|-----------|-----------------------------|
- Cat cab and Roll Over Protective Structure/Falling Object Protective Structure (ROPS/FOPS) are standard in North America, Europe and Japan.
 - ROPS meets SAE J394, SAE J1040 MAY 94 and ISO 3471:1994 standards.
 - FOPS meets SAE J231 JAN81 and ISO 3449:1992 Level II.
 - Standard air conditioning system contains environmentally-friendly R134a refrigerant.

Sound Performance

- | | |
|-----------|---------------------------------|
| Standards | Meet ANSI/SAE and ISO standards |
|-----------|---------------------------------|
- The operator sound exposure L_{eq} (equivalent sound pressure level) measured according to the work cycle procedures specified in ANSI/SAE J1166 OCT98 is 80 dB(A), for cab offered by Caterpillar, when properly installed and maintained and tested with the doors and windows closed.
 - Hearing protection may be needed when operating with an open operator station and cab (when not properly maintained or doors/windows open) for extended periods or in noisy environment.
 - The exterior sound pressure level for the standard machine measured at a distance of 15 m (49.2 ft) according to the test procedures specified in SAE J88 JUN86, mid-gear-moving operation, is 81 dB(A).
 - The sound power level for the following configurations when measured according to the static test procedure and conditions specified in ISO 6393:1998 are:
Standard machine 113 dB(A)
Optional sound suppressed 111 dB(A)

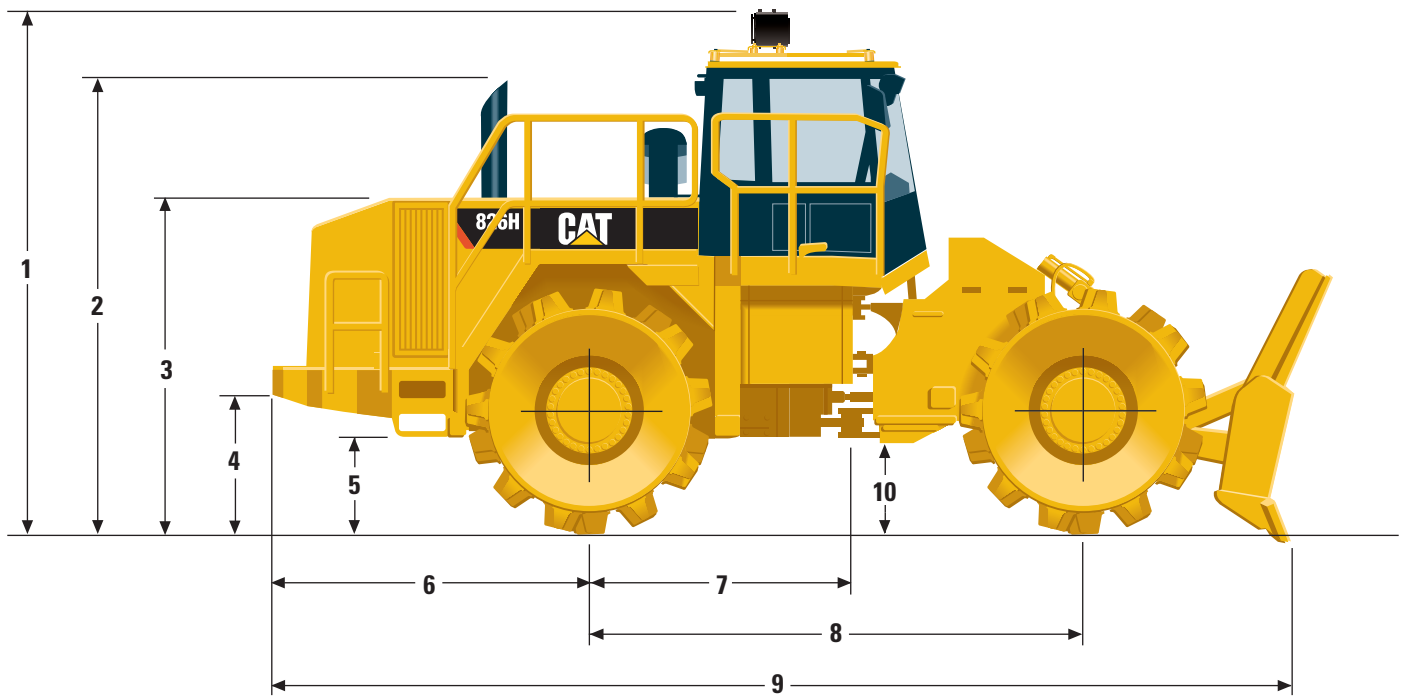
Dimensions

Center Line of Rear Axle to Hitch	2275 mm	7.46 ft
Width over Wheels	3800 mm	12.5 ft
Width over Endbits (Blade)	4502 mm	14.77 ft
Turning Radius – Inside	3221 mm	10.57 ft
Turning Radius – Outside	7333 mm	24.06 ft

826H Specifications

Dimensions

All dimensions are approximate.



1	Height to Top of Cab with A/C	4193 mm	13.76 ft
2	Height to Top of Exhaust Pipe	3733 mm	12.25 ft
3	Height to Top of Hood	2778 mm	9.11 ft
4	Ground Clearance to Counterweight	1027 mm	3.37 ft
5	Height to Bottom of Ladder	708 mm	2.32 ft
6	Center Line of Rear Axle to Edge of Counterweight	2687 mm	8.82 ft
7	Center Line of Rear Axle to Hitch	1850 mm	6.06 ft
8	Wheelbase	3700 mm	12.13 ft
9	Length with Blade on Ground	8332 mm	27.33 ft
10	Ground Clearance	488 mm	1.6 ft

Standard equipment may vary. Consult your Cat dealer for details.

Electrical

- Alarm, back-up
- Alternator (95-amp)
- Batteries, maintenance-free (4, 1,000 CCA)
- Diagnostic connector
- Electrical system (24-volt)
- Lighting system, halogen (front and rear)
- Lockable master disconnect switch
- Starter, electric (heavy-duty)
- Starting receptacle for emergency starts

Guards

- Axle guards (front and rear)
- Guards, powered (crankcase and power train)

Operator Environment

- Air conditioner, roof mounted
- Blade control lock system
- Cab, pressurized and sound suppressed
 - Internal four-post Roll Over Protective Structure (ROPS/FOPS), radio ready (communication/entertainment) includes antenna, speakers, and converter (12-volt, 15-amp), 12-volt power port, tinted glass, right/left hinged doors
- Cigar lighter (12-volt, 15-amp) and ashtray
- Coat hook
- Command control steering
- Electro-hydraulic blade controls
- Gear selection display
- Heater and defroster
- Horn, electric
- Hour meter display
- Hydraulic steering
- Light, dome (two in cab)
- Lunchbox and beverage holders
- Mirrors, rearview (externally mounted)

Monitoring system

Instrumentation, gauges:

- Engine coolant temperature
- Fuel level
- Hydraulic oil temperature
- Speedometer/tachometer
- Torque converter oil temperature

Instrumentation, warning indicators:

- Air inlet temperature
- Brake oil pressure
- Electrical system, low voltage
- Engine oil pressure
- Engine overspeed
- Fuel filter status
- Parking brake status
- Steering oil pressure
- Transmission filter status
- Seat (cloth) Comfort Series, suspension
- Seatbelt, retractable, 76 mm (3 in) wide
- Wet-arm wipers/washer (front and rear)
- Intermittent front wiper

Power Train

- Brakes, fully hydraulic, enclosed, wet multiple disc
- Cat axles (outboard final drives and No-SPIN differentials [rear] standard)
- Engine, Cat® C15 with ACERT™ Technology, ATAAC, ADEM™-IV controller
- Fan, radiator, hydraulically-driven (automatically reversible)
- Fuel priming aid
- Heat shield, turbo and exhaust manifold
- Muffler, sound-suppressed
- Precleaner, engine air intake
- Radiator, Next Generation Modular (NGMR) – six fins per inch cores

Separated cooling system

- Starting aid (ether)
- Switch, transmission neutralizer lockout
- Throttle lock
- Torque converter
- Transmission, planetary with 2F/2R electronic clutch pressure control

Other Standard Equipment

- Automatic Blade Positioning (ABP)
- Bumper, extended full width for radiator protection
- Cat O-ring face seals, couplings and XT™ hoses
- Coolers
 - Engine oil
 - Hydraulic oil
 - Transmission oil
- Doors, service access (locking)
- Grouped Electronic Clutch Pressure Control remote mounted pressure taps
- Hitch, drawbar with pin
- Hood, metallic with lockable service doors
- Oil sampling valves
- Rear egress, left and right sides
- Striker bars, full coverage
- Wheels, 1219 mm (48 in) with long-life, weld-on Plus Stepped Tips with rim extensions

Bulldozers

- Bulldozer blade, hydraulics and linkage are not included in standard equipment

Antifreeze

- Premixed with 50 percent concentration of Extended Life Coolant with freeze protection to -34° C (-29° F)

826H Optional Equipment

Optional equipment may vary. Consult your Cat dealer for details.

AM/FM/WB (Weather Band) cassette
CD radio

Blades

Straight blade

Semi U-blade

U-blade

Cat® Product Link

Cleaner fingers for Plus Tip wheels

Computer Aided Earthmoving System
(CAES) attachment ready option (ARO)

Differentials, No-SPIN, front

Fast fill system

Fuel

Oil

Front window guard

Heater, engine coolant

Mirrors, interior mounted

Rear fan and grill guard

Rubber mounted glass cab

Sound suppression

STIC Steering

Swing-out stairways

Turbine precleaner

Warning rotating beacon light

Warning strobe light

Wheels (four combined)

Various wheels, see Price List

For more complete information on Cat products, dealer services, and industry solutions, visit us on the web at www.cat.com

© 2013 Caterpillar Inc.
All rights reserved

Materials and specifications are subject to change without notice. Featured machines in photos may include additional equipment. See your Cat dealer for available options.

CAT, CATERPILLAR, SAFETY.CAT.COM, their respective logos, "Caterpillar Yellow" and the "Power Edge" trade dress, as well as corporate and product identity used herein, are trademarks of Caterpillar and may not be used without permission.

AEHQ6232-01 (03-2013)
Replaces AEHQ6232

