

906H2, 907H2, 908H2 Compact Wheel Loaders

Operating Specifications

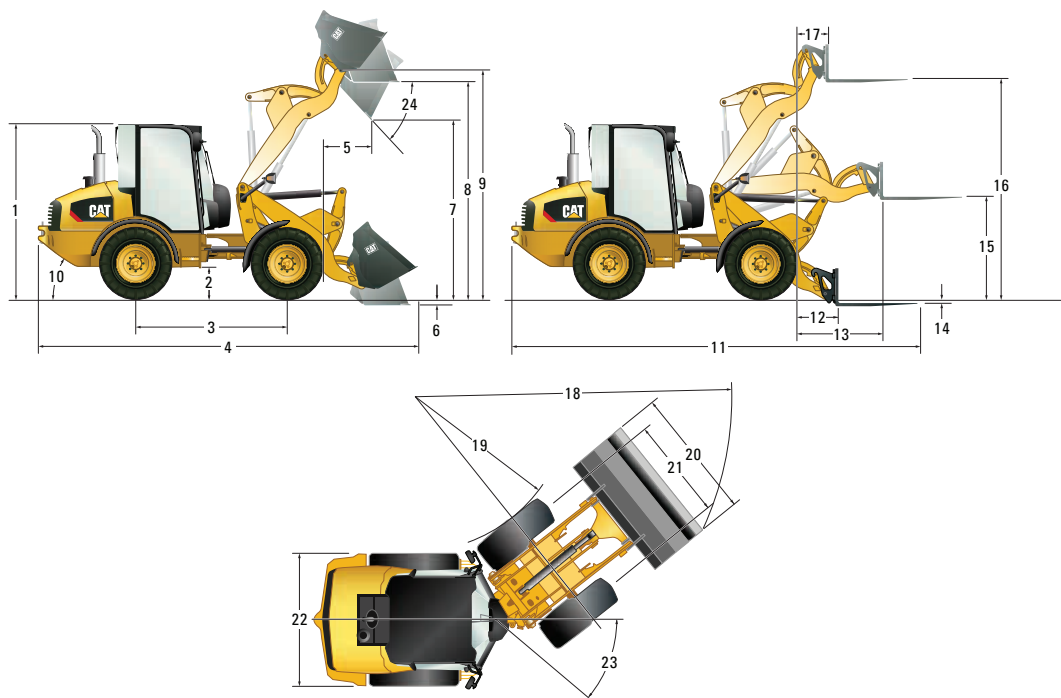
	906H2		907H2		908H2	
Tire Size	405/70 R18		405/70 R18		405/70 R20	
Rated Bucket Capacity	0.9 m ³	1.18 yd ³	1.0 m ³	1.3 yd ³	1.1 m ³	1.4 yd ³
Hydraulic Lift Capacity	3263 kg	7,194 lb	3263 kg	7,194 lb	3569 kg	7,868 lb
Breakout Force	42 kN	9,442 lb	42 kN	9,442 lb	47 kN	10,566 lb
Rated Operating Load @ Full Turn, Bucket	1580 kg	3,483 lb	1585 kg	3,494 lb	1705 kg	3,759 lb
Straight Tipping Load, Bucket	3985 kg	8,785 lb	4320 kg	9,524 lb	4775 kg	10,527 lb
Full Turn Static Tipping Load, Bucket	3160 kg	6,967 lb	3170 kg	6,989 lb	3410 kg	7,518 lb
Rackback, Transport Position	52 Degrees		52 Degrees		52 Degrees	
Rated Operating Load @ Full Turn, Forks (EN 474-3:2006, Firm and Level Ground, 500 mm [20 in] Load Center) (80% of FTSTL)	2065 kg	4,553 lb	2120 kg	4,674 lb	2355 kg	5,192 lb
Rated Operating Load @ Full Turn, Forks (EN 474-3:2006, Rough Terrain, 500 mm [20 in] Load Center) (60% of FTSTL)	1549 kg	3,415 lb	1590 kg	3,505 lb	1766 kg	3,893 lb
Rated Operating Load @ Full Turn, Forks (EN 474-3:2006, Firm and Level Ground, 1.25 Stability and 500 mm [20 in] Load Center)	2065 kg	4,553 lb	2120 kg	4,674 lb	2355 kg	5,192 lb
Rated Operating Load @ Full Turn, Forks (SAE J1197, Load Center @ Tine Mid-Point, 1120 mm [44 in] Tines) (50% FTSTL)	1203 kg	2,652 lb	1234 kg	2,721 lb	1381 kg	3,045 lb
Rated Operating Load @ Full Turn, Forks (SAE J1197, Load Center @ Tine Mid-Point, 1220 mm [48 in] Tines) (50% FTSTL)	1154 kg	2,544 lb	1183 kg	2,608 lb	1324 kg	2,919 lb
Rated Operating Load Straight Back, Forks (SAE J1197, Load Center @ Tine Mid-Point, 1120 mm [44 in] Tines) (50% FTSTL)	1577 kg	3,476 lb	1607 kg	3,543 lb	1772 kg	3,907 lb
Rated Operating Load Straight Back, Forks (SAE J1197, Load Center @ Tine Mid-Point, 1220 mm [48 in] Tines) (50% FTSTL)	1544 kg	3,404 lb	1574 kg	3,470 lb	1733 kg	3,822 lb
Rated Operating Load @ Full Turn, Forks (EN 474-3:2006, Firm and Level Ground, 500 mm [20 in] Load Center) (Transport 100 mm [4 in] Above Ground)	2720 kg	5,997 lb	2785 kg	6,140 lb	2990 kg	6,592 lb

- Specifications shown are for 906H2, 907H2, and 908H2 with full fuel tank, 75 kg (165 lb) operator, ROPS/FOPS cab, skid steer loader style coupler and general purpose bucket.

906H2, 907H2, 908H2 Compact Wheel Loaders

Dimensions

All dimensions are approximate. Dimensions shown are based on the machine equipped with general purpose bucket and standard 405/70 SPT9 tires. Refer to Operating Specifications.



	906H2		907H2		908H2	
1 Cab Height	2465 mm	8 ft 1 in	2585 mm	8 ft 6 in	2650 mm	8 ft 8 in
2 Ground Clearance	300 mm	11.8 in	300 mm	11.8 in	340 mm	13 in
3 Wheelbase	2170 mm	7 ft 1 in	2170 mm	7 ft 1 in	2170 mm	7 ft 1 in
4 Overall Length with Bucket	5585 mm	18 ft 4 in	5585 mm	18 ft 4 in	5760 mm	18 ft 11 in
5 Reach at Maximum Dump Height	810 mm	2 ft 8 in	810 mm	2 ft 8 in	855 mm	2 ft 10 in
6 Dig Depth	90 mm	3.5 in	90 mm	3.5 in	95 mm	3.7 in
7 Maximum Dump Height	2395 mm	7 ft 10 in	2395 mm	7 ft 10 in	2540 mm	8 ft 4 in
8 Load Over Height	3035 mm	9 ft 11 in	3035 mm	9 ft 11 in	3215 mm	10 ft 7 in
9 Hinge Pin at Maximum Height	3230 mm	10 ft 7 in	3230 mm	10 ft 7 in	3410 mm	11 ft 2 in
10 Departure Angle (Degrees)	34°		34°		34°	
11 Overall Length with Forks	5945 mm	19 ft 6 in	5945 mm	19 ft 6 in	6150 mm	20 ft 2 in
12 Reach at Ground Level	750 mm	2 ft 6 in	750 mm	2 ft 6 in	925 mm	3 ft
13 Maximum Reach	1265 mm	4 ft 2 in	1265 mm	4 ft 2 in	1445 mm	4 ft 9 in
14 Fork Depth (Above Ground)	(45 mm)	(1.8 in)	(45 mm)	(1.8 in)	30 mm	1.2 in
15 Fork Height at Maximum Reach	1490 mm	4 ft 11 in	1490 mm	4 ft 11 in	1525 mm	5 ft
16 Maximum Fork Height	3160 mm	10 ft 4 in	3160 mm	10 ft 4 in	3300 mm	10 ft 10 in
17 Fork Reach at Maximum Height	505 mm	1 ft 8 in	505 mm	1 ft 8 in	595 mm	1 ft 11 in
18 Turning Radius Over Bucket	4445 mm	14 ft 7 in	4515 mm	14 ft 10 in	4560 mm	15 ft
19 Turning Radius Inside Tire	2240 mm	7 ft 4 in	2240 mm	7 ft 4 in	2080 mm	6 ft 10 in
20 Width Over Bucket	1880 mm	6 ft 2 in	2035 mm	6 ft 8 in	2060 mm	6 ft 9 in
21 Tire Gauge	1420 mm	4 ft 8 in	1420 mm	4 ft 8 in	1570 mm	5 ft 2 in
22 Machine Width	1840 mm	6 ft	1840 mm	6 ft	1985 mm	6 ft 6 in
23 Articulation Angle (Degrees)	39°		39°		39°	
24 Dump Angle at Maximum Height (Degrees)	45°		45°		45°	

906H2, 907H2, 908H2 Compact Wheel Loaders

Maximum Material Densities

Based on ISO 7546:1983 and rated operating loads at full turn.

906H2

Bucket Type	General Purpose		Multi Purpose		Light Material	
Rated Capacity	0.9 m ³	1.18 yd ³	0.75 m ³	0.98 yd ³	1.2 m ³	1.6 yd ³
Dump Height	2395 mm	94 in	2470 mm	97 in	2285 mm	90 in
Maximum Material Density	1755 kg/m ³	2,958 lb/yd ³	2131 kg/m ³	3,592 lb/yd ³	1208 kg/m ³	2,036 lb/yd ³
Bucket Width	1880 mm	74 in	1880 mm	74 in	2080 mm	82 in

907H2

Bucket Type	General Purpose		Multi Purpose		Light Material	
Rated Capacity	1.0 m ³	1.3 yd ³	0.75 m ³	0.98 yd ³	1.2 m ³	1.6 yd ³
Dump Height	2395 mm	94 in	2470 mm	97 in	2285 mm	90 in
Maximum Material Density	1584 kg/m ³	2,670 lb/yd ³	2149 kg/m ³	3,622 lb/yd ³	1218 kg/m ³	2,053 lb/yd ³
Bucket Width	2035 mm	80 in	1880 mm	74 in	2080 mm	82 in

908H2

Bucket Type	General Purpose		Multi Purpose		Light Material	
Rated Capacity	1.1 m ³	1.4 yd ³	0.9 m ³	1.18 yd ³	1.5 m ³	2.0 yd ³
Dump Height	2540 mm	100 in	2630 mm	104 in	2345 mm	92 in
Maximum Material Density	1549 kg/m ³	2,611 lb/yd ³	1929 kg/m ³	3,251 lb/yd ³	1034 kg/m ³	1,743 lb/yd ³
Bucket Width	2060 mm	81 in	2060 mm	81 in	2080 mm	82 in

Operator Environment Features

	Deluxe Cab	Comfort Cab	Canopy
Operator Environment Features			
Two Access Doors	•	•	
Fixed Steering Column			•
Adjustable Steering Column	•	•	
Vinyl Suspension Seat			•
Cloth Suspension Seat, Arm Rest		•	
Cloth Electric Air Suspension Seat, Arm/Head Rest, Lumbar Support, Heated Back Seat	•		
Left Window – Sliding	•	•	
Right Window – Sliding	•		
Heated Rear Window	•	•	
Coat Hook	•	•	•
Cabin Light	•	•	
Sun Visor	•	•	•
Radio-ready Kit (Wiring, Speaker, Antenna and Grilles)	•	•	
External Mirrors (2) – Knock Back	•	•	•
Heater	•	•	
Lockable Storage Box	•	•	•
Adjustable Internal Mirror	•	•	•
Air Conditioning	•		
Optional Cab Features			
Rear Blind	•	•	
Cat Radio/CD/MP3/WMA Player	•	•	