

906H2, 907H2, 908H2

Compact Wheel Loaders



	906H2	907H2	908H2
Engine Model	Cat® C3.3B DIT	Cat C3.3B DIT	Cat C3.3B DIT
Net Power (ISO 9249)	52 kW (69 hp)	52 kW (69 hp)	52 kW (69 hp)
Operating Weight	5630 kg	5810 kg	6465 kg
Bucket Capacity	0.9 m ³	1.0 m ³	1.1 m ³

906H2, 907H2, 908H2 Features

High Performance

With its high full turn tipping loads and breakout forces, the H2 Series delivers a powerful solution for a variety of customer applications.

Ease of Operation

With great visibility to work tools, operating the H2 Series CWL couldn't be easier. Simple controls and the ergonomically designed, low effort joysticks reduce fatigue and increase comfort.

Versatile Z-bar Linkage

The high performance parallel lift, Z-bar loader linkage is designed for strength and visibility. A choice of skid steer or horizontal pin quick couplers ensures maximum versatility.

Power Train

The standard hydrostatic driveline is a two-speed, 20 km/h transmission. Heavy duty axles are fitted as standard with 100% diff-lock and ride control available as options.

High Flow Work Tools

Standard flow and optional high flow hydraulics with a choice of couplers allow the Cat Compact Wheel Loaders to use a large range of work tools, even those that are commonly associated with Cat Skid Steer Loaders.

Serviceability

The design of the H2 Series allows quick and easy servicing. Tilt up engine hood and side service doors give exceptional access to the major components safely from ground level. S-O-SSM oil ports and pressure test points enable easy preventative maintenance.

Contents

H2 Series Compact Wheel Loaders	4
Operator Station	5
Power Train	6
Couplers	7
Z-bar Loader Linkage	7
Work Tools	8
Reliability and Durability	10
Customer Support	11
Serviceability	11
Specifications	12
Standard Equipment	15
Optional Equipment	15





The new H2 Series Compact Wheel Loaders maintain the Cat strengths while boasting a whole new range of features and benefits. In short, a machine that can be trusted to perform.

H2 Series Compact Wheel Loaders

A comprehensive range to suit all applications and environments.

906H2

This low cab machine provides access to more areas on site and applications allowing for low entry machines. It is designed with simplicity and cost effectiveness in mind while still delivering great all-round performance to work in a wide range of applications.

- 0.9 m³ operating capacity
- Low cost rental specification (option)
- Low height over cab
- 18" rim size



907H2

With more operating capacity than the 906H2 and a higher mounted cab, this model can work in applications where clearance is not critical.

- 1.0 m³ operating capacity
- Standard height over cab
- 18" rim size



908H2

Boasts higher operating capacity, engine horsepower, breakout forces and hydraulic power allowing it to operate in tougher conditions.

- 1.1 m³ operating capacity
- Standard height over cab
- 20" rim size





Operator Station

Modern interior, high quality, with an intuitive design.

Excellent Visibility

Visibility to the worksite has been kept to an optimum with two fully glazed doors, front low-level glazing, excellent rear visibility and a clear view to the work tool through the loader arms.

Cab Comfort

Two arm wrests and an adjustable wrist rest as standard, intuitively laid out controls, low effort joysticks and steering are some of the features which give maximum operator comfort.

Digital LED Display

All models feature a red backlit machine status cluster, with speedometer, located conveniently within the operator's line of sight.

Multi Function Joystick

Contains Forward-Neutral-Reverse switch, travel speed selector, 3rd auxiliary hydraulics, diff-lock and constant flow controls. A mechanical joystick option is available for the 906H2.

Cab Options

With a variety of options it is easy to customize the cab to meet your requirements. A choice of three cab trims and a canopy are available.



Power Train

Cat Hystat power train delivers aggressive performance.



Two Speed Options

The Cat hydrostatic driveline has two speed options, 20 km/h or 35 km/h. The 35 km/h speeder includes secondary steering. Both options feature smooth inching as standard, with optional travel speed, rimpull control and hand throttle (transmission control upgrade).

Disc Brakes

The 35 km/h speeder version has hydraulically boosted oil immersed disc brakes fitted to both ends of the front axle. The 20 km/h version has a hydraulically actuated dry disc brake, both offering smooth and effective braking. The braking is applied through all four wheels.

Diff-lock

The Cat Compact Wheel Loaders offer 100% diff-lock, in both axles as an option throughout the range. Diff-lock can be easily engaged on the move to allow travel over poor underfoot conditions.

Chassis Oscillation

Oscillating chassis helps assure four wheel ground contact for optimum traction and stability.

Ride Control

The ride control system further enhances the already smooth road handling of the machine, resulting in increased operator comfort and higher productivity. It is suited for extreme applications where operators need to maintain bucket load material and have a smooth ride. There are three modes available: auto, on and off. Recommended for use with the 35 km/h speeder option.

Couplers

Making the Compact Wheel Loader even more versatile.



Horizontal Pin Coupler

This quick coupler will pick up the new range of Cat Compact Wheel Loader work tools. The coupler along with the profiled loader arms have been designed to give maximum visibility to the work tool. A simple joystick function allows for easy engagement and disengagement of the locking pins.



Z-bar Loader Linkage

The ideal linkage for Compact Wheel Loaders.

Z-bar Design

Cat Compact Wheel Loaders make use of the high performance Z-bar loader design which has been optimized for strength, visibility and versatile attachment usage. The Z-bar linkage gives the operator a clear view to the work tool and excellent dump clearance while maintaining good cycle times and parallel lift.

Skid Steer Loader Coupler

The universal skid steer loader coupler allows the use of many Cat Skid Steer Loader work tools. Using either the standard or high flow hydraulic option, this coupler allows the H2 Series Compact Wheel Loaders to integrate into a skid steer loader fleet.

Work Tools

A range of buckets, forks and hydraulically powered work tools optimize machine performance.



Wide Range of Work Tools

To maximize machine utilization, Cat work tools are designed to get the best out of the machine and deliver excellent value through high productivity and long life.

The new H2 Series Compact Wheel Loaders can now pick up even more work tools with the addition of a choice of couplers.



Work Tools for Cat Horizontal Pin Coupler

The Cat Compact Wheel Loader offers a comprehensive range of buckets to suit any environment and specific customer needs. The buckets have been designed and engineered to endure the high breakout forces of the H2 Series Compact Wheel Loader. The Cat fork carriage has been designed to increase visibility to the forks, allowing the operator to work much more efficiently and safely, without compromising durability. Various fork tine lengths are available.

Work Tools for Cat Skid Steer Loader Coupler

This coupler allows the use of Cat Skid Steer Loader work tools. Caterpillar recommends the following options when choosing the Cat Skid Steer Loader coupler:

- Return to dig work tool positioner
- Work tool wiring harness
- Transmission control upgrade
- High flow auxiliary hydraulics for high flow work tools

Auxiliary Lines and Connectors

The auxiliary lines and connectors are fitted as standard, meaning the Cat Compact Wheel Loader comes ready to work.

For a complete list of available work tools please consult your local Cat dealer.



Reliability and Durability

Quality within, quality throughout.

E-Coat Protection

Cat Compact Wheel Loaders undergo an extensive 24-Stage 'E-Coat' process. Zinc based electroplated undercoat and polyurethane topcoat provides unmatched corrosion resistant properties.

Heavy Duty Axles

The H2 Series Compact Wheel Loaders are fitted with heavy duty axles, with outboard planetary reduction gears.

Wiring

With heavy-duty braided wiring, Cat Compact Wheel Loaders offer great electrical durability. The water resistant sealed connectors prevent dust and moisture interfering with the electrics. Multicolored and numbered wiring is used for easy component identification.

Durable Design

Durability has been designed into the machine by offering protection to features such as the rear lights, loader arm and coupler greasing points.

Quality Throughout

High quality solid plastics, well-fitted rubber moldings make up the foundation of the H2 Series cab. Robust IP67 standard switches are used throughout, ensuring long life of components.



Customer Support

Unmatched dealer support and complete services provided by the world's largest dealer network.

Your Cat dealer is ready to assist you with your purchase decision and everything after.

- Make comparisons of machines, with estimates of component life, preventative maintenance and cost of production.
- Financing packages are flexible to meet your needs.
- Your Cat dealer can evaluate the cost to repair, rebuild and replace your machine, so you can make the right choice.
- A worldwide computer network enables the dealer parts counter to locate nearly all parts.
- For more information on Cat products, dealer services and industry solutions, visit us at www.cat.com.



Serviceability

Easy access to service points for routine maintenance.



Conveniently located service points make maintenance easier.

- All routine maintenance points can be accessed safely from ground level
- S-O-S valves for preventative maintenance
- Ecological drains for all fluids, with on-board connector hoses
- Electronic Technician™ plug in port for advanced diagnostics
- Ground level access to filters for easy servicing
- Color coded and numbered wiring for easy component identification
- Oil cooler pack can be hinged open for easy cleaning
- A two stage air cleaner including a secondary element and a visual indicator for better service life
- Battery disconnect switch for safe servicing

906H2, 907H2, 908H2 Compact Wheel Loaders Specifications

Engine

Rated power at 2,500 rpm	906H2	907H2	908H2
Cat C3.3B engine, 4 cylinder, turbocharged, direct injection			
Gross Power	55 kW (73 hp)	55 kW (73 hp)	55 kW (73 hp)
Net Power			
ISO 9249	52 kW (69 hp)	52 kW (69 hp)	52 kW (69 hp)
80/1269/EEC	52 kW (69 hp)	52 kW (69 hp)	52 kW (69 hp)
Bore	94 mm	94 mm	94 mm
Stroke	120 mm	120 mm	120 mm
Displacement	3.3 L	3.3 L	3.3 L

- The Cat C3.3B engine meets EU Stage IIIA and EPA Tier 4 Interim emission standards for highly regulated markets. For other markets, the engine emits at emissions levels equivalent to EU Stage II and EPA Tier 2.

Hydraulic System

	906H2	907H2	908H2
Main Relief	235 bar	235 bar	235 bar
3rd Auxiliary Flow			
Standard	83 L/min	83 L/min	83 L/min
High Flow	125 L/min	125 L/min	125 L/min
Hydraulic Cycle Time			
Lift	5 secs	5 secs	5 secs
Lower	4 secs	4 secs	4 secs
Dump	2 secs	2 secs	2 secs
Rackback	2.5 secs	2.5 secs	2.5 secs

Maximum Material Densities

Based on ISO 7546:1983, and rated operating loads at full turn.

Bucket Type	Model	General Purpose			Multi Purpose			Light Material		
		906H2	907H2	908H2	906H2	907H2	908H2	906H2	907H2	908H2
Rated Capacity	m ³	0.90	1.00	1.10	0.75	0.75	0.90	1.20	1.20	1.50
Dump Height										
Horizontal Pin Coupler	mm	2510	2510	2655	2500	2500	2665	2430	2430	2460
SSL Coupler	mm	2395	2395	2540	2470	2470	2630	2285	2285	2345
Maximum Material Density										
Horizontal Pin Coupler	kg/m ³	1889	1706	1658	2184	2202	1967	1271	1310	1106
SSL Coupler	kg/m ³	1755	1584	1549	2131	2149	1929	1208	1218	1034
Bucket Width	mm	1880	2035	2060	1880	1880	2060	2080	2080	2080
Bucket Weights										
Horizontal Pin BOCE	kg	395	413	444	557	557	603	462	462	515
Vertical Pin BOCE	kg	394	412	444	534	537	582	461	461	514

Travel Speeds

	906H2	907H2	908H2
Speed 1	7 km/h	7 km/h	7 km/h
Speed 2	20 km/h	20 km/h	20 km/h
High Speed	35 km/h	35 km/h	35 km/h

ROPS/FOPS

Cat cab, Rollover Protective Structure (ROPS) and Falling Objects Protective Structure (FOPS)

- ROPS meets the following criteria: ISO 3471-1:1994
- FOPS meets the following criteria: ISO 3449:1992

Sound Levels

Exterior Sound

- For European Union compliant machine configurations, the machine labeled spectator sound power level is measured according to the test procedures and conditions specified in 2000/14/EC.

Interior Sound

- The dynamic operator sound pressure level is 75 dB(A) when "ISO 6396:1992" is used to measure the value for an enclosed cab. The cab was properly installed and maintained. The test was conducted with the cab doors and the cab windows closed.

Service Refill Capacities

	906H2	907H2	908H2
Cooling System	24 L	24 L	24 L
Fuel Tank	52 L	78 L	78 L
Hydraulic System	70 L	70 L	70 L
Engine Oil	10 L	10 L	10 L

Operating Specifications

Machine with full fuel tank, ROPS/FOPS cab, 75 kg operator, horizontal pin coupler (HP) or skid steer loader coupler (SSL) and general purpose bucket (GP).

Model	906H2		907H2		908H2		
	HP	SSL	HP	SSL	HP	SSL	
Coupler Type							
Tire Size	405/70 R18		405/70 R18		405/70 R20		
Operating Weight (ISO 6016:1998)	kg	5630	5630	5810	5810	6465	6465
Rated Bucket Capacity (ISO 7546:1983)	m ³	0.9	0.9	1.0	1.0	1.1	1.1
Breakout Force, Bucket (ISO 14397-2:2007)	kN	51	42	51	42	57	47
Rated Operating Load at Full Turn, Bucket (ISO 14397-1:2007)	kg	1700	1580	1705	1585	1825	1705
Straight Tipping Load, Bucket (ISO 14397-1:2007)	kg	4280	3985	4640	4320	5100	4775
Full Turn Static Tipping Load, Bucket (ISO 14397-1:2007)	kg	3400	3160	3410	3170	3650	3410
Rackback, Transport Position		52°	52°	52°	52°	52°	52°
Rated Operating Load at Full Turn, Forks (EN 474-3:2006, Firm and Level Ground, 1.25 Stability and 500 mm Load Center)	kg	2150	2065	2205	2120	2515	2355
Rated Operating Load at Full Turn, Forks (Firm and Level Ground, 1.25 Stability and 500 mm Load Center, Transport 100 mm Above Ground)	kg	2740	2720	2810	2785	3080	2990

Cab Features

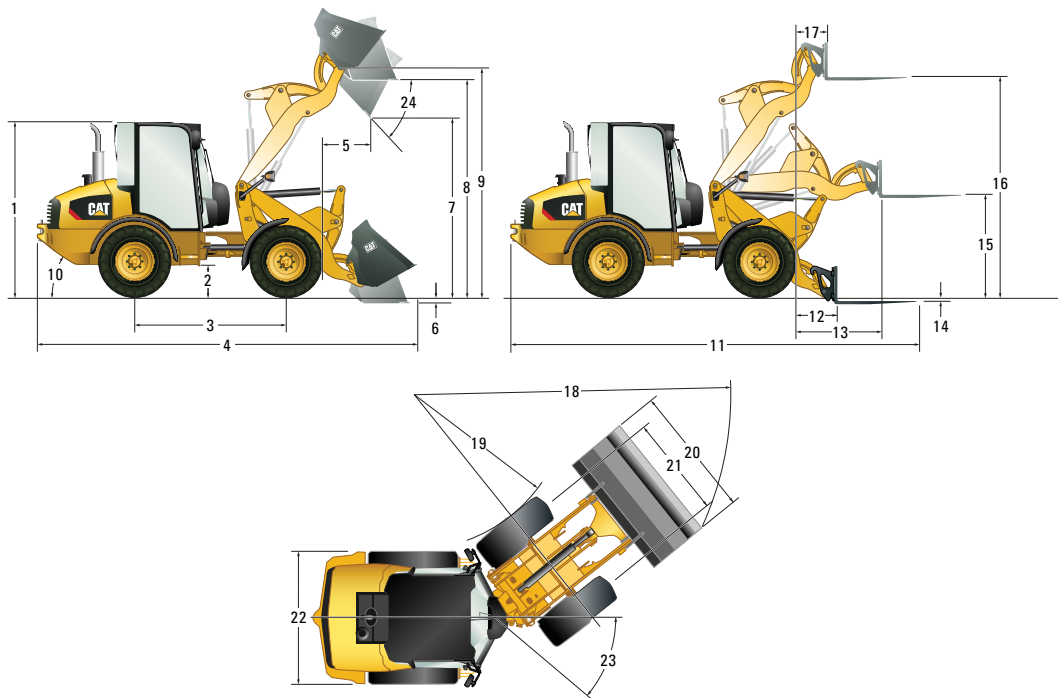
	Base Cab*	Comfort Cab	Deluxe Cab	Canopy
Standard Cab Features				
Two Access Doors	•			•
Fixed Steering Column		•	•	
Adjustable Steering Column				•
Vinyl Suspension Seat	•	•		
Cloth Suspension Seat, Arm Rest			•	
Cloth, Electric Air Suspension, Arm/Head Rest, Lumbar Support and Heated Back Seat	•			
Left Window – Fixed		•	•	
Left Window – Sliding			•	
Right Window – Sliding	•	•	•	
Heated Rear Window	•	•	•	•
Coat Hook	•	•	•	
Cabin Light	•	•	•	•
Sun Visor		•	•	
Radio-ready Kit (Wiring, Speaker, Aerial and Grilles)		•	•	•
External Knock Back Mirrors	•	•	•	
Heater	•	•	•	•
Lockable Storage Box	•	•	•	•
Adjustable Internal Mirror				
Optional Cab Features				
Cat Radio/CD/MP3/WMA/AUX	•	•	•	
Rear Blind	•	•	•	
Heater and Air Conditioning	•	•	•	

*Base cab available only on the 906H2

906H2, 907H2, 908H2 Compact Wheel Loaders Specifications

Dimensions

Dimensions shown are based on the machine equipped with general purpose bucket and standard 405/70 SPT9 tires. All dimensions are approximate.



	With Horizontal Pin Coupler			With SSL Coupler		
	906H2	907H2	908H2	906H2	907H2	908H2
	mm	mm	mm	mm	mm	mm
1 Cab Height	2465	2585	2650	2465	2585	2650
2 Ground Clearance	300	300	340	300	300	340
3 Wheelbase	2170	2170	2170	2170	2170	2170
4 Overall Length with Bucket	5435	5435	5595	5585	5585	5760
5 Reach at Maximum Dump Height	710	710	760	810	810	855
6 Dig Depth	80	80	85	90	90	95
7 Maximum Dump Height	2510	2510	2655	2395	2395	2540
8 Load Over Height	3035	3035	3225	3025	3025	3215
9 Hinge Pin at Maximum Height	3230	3230	3410	3230	3230	3410
10 Departure Angle (Degrees)	34°	34°	34°	34°	34°	34°
11 Overall Length with Forks	5915	5915	6015	5945	5945	6150
12 Reach at Ground Level	720	720	790	750	750	925
13 Maximum Reach	1215	1215	1310	1265	1265	1445
14 Fork Depth Below Ground (Above Ground)	25	25	70	(45)	(45)	(30)
15 Fork Height at Maximum Reach	1425	1425	1450	1490	1490	1525
16 Maximum Fork Height	3090	3090	3225	3160	3160	3300
17 Fork Reach at Maximum Height	445	445	460	505	505	595
18 Turning Radius Over Bucket	4400	4475	4510	4445	4515	4560
19 Turning Radius Inside Tire	2240	2240	2080	2240	2240	2080
20 Width Over Bucket	1880	2035	2060	1880	2035	2060
21 Tire Gauge	1420	1420	1570	1420	1420	1570
22 Machine Width	1840	1840	1985	1840	1840	1985
23 Articulation Angle (Degrees)	39°	39°	39°	39°	39°	39°
24 Dump Angle at Maximum Height (Degrees)	45°	45°	45°	45°	45°	45°

906H2, 907H2, 908H2 Standard Equipment

Standard Equipment

Standard equipment may vary. Consult your Cat dealer for details.

TRANSMISSION

- Transmission, 20 km/h with heavy duty axles
- Transmission inching function
- Hydrostatic drive

LOADER

- Hydraulic horizontal pin quick coupler or skid steer quick coupler
- Proportional auxiliary hydraulic circuit
- Loader arm float function
- Connect under pressure hydraulic quick connector
- Parallel lift Z-bar loader

ENGINE

- Cat C3.3B DIT EU Stage IIIA compliant
- Cat C3.3B engine is EU Stage II and EPA Tier 2 emissions compliant
- Two stage air cleaner with visual indicator
- Cat extended life coolant
- Lockable engine compartments
- Easy quick release fuel filter/water separator
- Engine oil drain valve
- Closed circuit breather

ELECTRICAL

- Battery disconnect switch
- Heavy duty battery, 12V
- Engine cold starter aid
- Alternator 80 A
- Service point connector for electronic diagnostics (Electronic Technician™)

GENERAL

- E-coat paint primer
- Pressure test points
- Recovery hitch and pin
- Scheduled oil sampling S·O·S ports

OPERATOR ENVIRONMENT

- Radio-ready kit includes speakers (not in base cab)
- Two doors
- Cup holder
- Sun visor
- Heated rear window
- ROPS and FOPS certified cab
- Adjustable wrist rest
- Retractable seat belt (2 inch)
- Cabin light
- Auxiliary power sockets
- Coat hook
- Pressurized cab
- On board digital display cluster
- Heater with window, side and feet vents
- Sound suppression
- Multifunction joystick with direction control
- Proportional auxiliary control
- Two external knock back mirrors
- Warning indicators for major systems
- Wiper/washer front and rear
- Easy clean cab floor
- Lockable storage box
- Adjustable internal mirror

906H2, 907H2, 908H2 Optional Equipment

Optional Equipment

Optional equipment may vary. Consult your Cat dealer for details.

TRANSMISSION

- Transmission control upgrade
- 100% diff-lock on both axles, selectable on the move
- Ride control
- Speeder, 35 km/h with secondary steering

LOADER

- High flow auxiliary hydraulics
- Load check valves
- Return to dig work tool positioner

ENGINE

- Engine block heater 120V
- Engine oil drain valve (non spill eco drain)

ELECTRICAL

- Reverse alarm
- Machine Security System (MSS)
- Magnetic rotating beacon
- Work tool wiring harness
- Working lights, two front and two rear

GENERAL

- Custom color
- Rear light guards
- Heavy duty coupler guard
- Tire options including heavy duty tires

FLUIDS

- Biodegradable hydraulic oil
- Cat extended life coolant (-50° C)

OPERATOR ENVIRONMENT

- Air conditioning
- Retractable seat belt (3 inch)
- Cat radio/CD/MP3/WMA/AUX
- ROPS and FOPS certified canopy
- Base cab for 906H2
- Comfort and deluxe cabs
- Mechanical joystick (available only for 906H2)
- Radio-ready kit for base cab (wiring, speakers, aerial and grille)
- Rear blind

WORK TOOLS

- For all work tools and standard/high flow options (consult your Cat dealer)
- For a summary of available cab options please refer to page 13.

For more complete information on Cat products, dealer services, and industry solutions, visit us on the web at www.cat.com

AEHQ6845 (02-2013)
(EAME, APD)

© 2013 Caterpillar Inc.
All rights reserved

Materials and specifications are subject to change without notice. Featured machines in photos may include additional equipment. See your Cat dealer for available options.

CAT, CATERPILLAR, SAFETY.CAT.COM, their respective logos, "Caterpillar Yellow" and the "Power Edge" trade dress, as well as corporate and product identity used herein, are trademarks of Caterpillar and may not be used without permission.

