

422F

Backhoe Loader



Cat® 3054C Naturally Aspirated Diesel Engine (standard)

Gross Power (ISO 14396) @ 2,200 rpm	56.5 kW (74 hp)
Net Power (ISO 9249) @ 2,200 rpm	53 kW (71 hp)

Cat 3054C DIT Diesel Engine (optional)

Gross Power (ISO 14396) @ 2,200 rpm	68.5 kW (91 hp)
Net Power (ISO 9249) @ 2,200 rpm	65 kW (87 hp)

Weights

Operating Weight	7481-9261 kg
------------------	--------------

Backhoe Digging Depth

Stick	Standard	Extended
SAE Maximum	4241 mm	5243 mm
Manufacturer's Maximum	4843 mm	5765 mm

Maximize your productivity and ensure high levels of efficiency with ease of operation and class leading performance.

Contents

Features.....4
Industry Leading Operator Station.....6
Loader.....8
Backhoe Performance.....9
Hydraulics.....10
Work Tools.....11
Power Train.....12
Serviceability.....14
Customer Support.....15
Specifications.....16
Standard Equipment.....21
Optional Equipment.....22





Developed with over 25 years experience in the Backhoe Loader industry, the 422F is designed to exceed customer expectations. More performance, versatility and comfort than ever before gives the 422F the edge needed in a harsh and competitive environment.

Designed with you in mind, the Cat Backhoe Loader is ready to get straight to work.

See your Cat dealer and try out The Next Generation of Backhoe Loaders from Caterpillar.

Features

Brand new features, designed with you in mind.

Improved Serviceability

The 422F now has a hinged cooling pack and an easy to open engine hood and an easy to adjust Stabilizer and E-Stick wear pad system. This means less machine downtime and more convenience for the operator.

Boosted Braking

Boosted Braking is now standard on all 422F Backhoe Loaders. When driving in two wheel drive, applying the brakes engages four wheel drive, maximizing brake effectiveness. Releasing the brakes returns the transmission to two wheel drive. This effective system works well in hazardous, slippery or steep surfaces.

Excellent Weight Distribution

The 422F has been designed with a long wheel base to ensure optimum balance and handling, particularly when roading. This is achieved with no loss in turning circle.

Excavator Controls

The 422F is offered with a choice of excavator controls Backhoe (SAE), Excavator (ISO) or universal controls (X pattern). This ensures the 422F will suit any type of operator.





Large Non-Metallic Fuel Tank

A large 160 L non-metallic fuel tank in conjunction with the Cat engine and efficient hydraulic system ensures longer periods between fill ups and less inconvenience. Less condensation and no internal rusting maximizes up time.

Electro-Deposition Coating

Your 422F has been protected by an undercoat of electro-deposited (E-Coat) primer, which completely seals each metallic component and offers a superior degree of protection from damage and corrosion. Coupled with the high solids polyurethane top coat, your 422F will stay looking good for longer, ensuring optimum resale value.



The 422F cab is designed with today's operator in mind – providing maximum comfort, ease of operation, and modern styling to exceed the requirements of today's operator.

A wide cab provides a spacious environment for better performance when turning the seat from one mode of operation to the other. Cab comfort is enhanced with the first-class Cat air suspension seat, reducing fatigue.

An easy to open single rear piece window provides the operator with excellent ventilation and superb visibility. The rear wiper easily cleans a large area of the rear screen to ensure excellent visibility of the working area when working in wet or dusty conditions.

Excellent ergonomics ensure that all controls are within easy reach of the operator to provide superior control increase productivity.

Other features such as remote stabilizer controls, large adjustable vents throughout the cab, and clear gauges provide the operator with a comfortable operating environment designed to reduce operator fatigue and increase productivity.



Industry Leading Operator Station

Get the job done in comfort and style with unrivaled visibility.

Operator Controls

Optimal cab ergonomics are vital to assist the operator in their quest for best productivity. Pressure compensated, well placed levers ensure low efforts and good controllability for maximum productivity.

Vibration

Caterpillar understands that backhoe loaders work in some of the harshest environments. By controlling normal machine vibrations caused by these harsh conditions, operator efficiency and productivity are improved. The 422F has features, both standard and optional, that reduce vibration.

Cab Mounts

The cab is attached to the mainframe with resilient mounts, reducing vibration and sound providing the operator with an all round comfortable working environment.

Cab Air Filter

The 422F has an easy access cab air filter, situated within the right hand rear fender. The cab air intake is positioned high up to minimize dust intake into the air filter.

HVAC System (Turbocharged Engine Only)

The 422F benefits from an optional, powerful air conditioning system, which provides good ventilation to the operator, ensuring the operator stays cool when working in warm temperatures. The ventilation system also provides plenty of demisting, defrosting and heating capability.

Work Lights

The 422F has adjustable front and rear work lights. This allows the operator to direct the light wherever needed, providing maximum illumination to the work area whatever the ambient light conditions.

Cab and Canopy Options

The 422F is available with either a fully glazed cab or an open canopy, providing the best choices to suit individual operator needs.

Cat Air Suspension Seat (Only Available on Cab)

The major interface between the machine and the operator is optimal, and the Cat air suspension seat provides the operator with a comfortable working platform to ensure high levels of productivity with the minimum of fatigue.



Loader

The single tilt loader reaches new heights.

Loader Performance

Designed with performance in mind, the 422F has greater breakout forces, load over height and reach, making life easier for you when truck loading or shoveling. Versatility is enhanced with the choice of General Purpose or Multi Purpose buckets, and visibility is excellent with the lower hood line enabling a clear line of sight to the loader bucket.

Ride Control

The Cat proven Ride Control system is an option designed to reduce machine pitching and bouncing giving operators a smooth ride in all applications, including load and carry, roading, or simply moving around the job site. An accumulator acts as a shock absorber to reduce machine pitching and provide a smoother ride over rough terrain. The system is engaged by a switch on the front console.

Return to Dig

Your 422F is equipped with a standard Return To Dig system. This system reduces loading cycle times by bringing the loader bucket back to the dig position automatically when lowering the arms. By the time the loader arms have been lowered to ground level, the bucket is in the correct position ready for the next load.

Excavator-Style Backhoe

Whether you're close-up truck loading on a single road carriageway, or digging over obstacles such as walls, the excavator-style boom outperforms the rest. Combining versatility with powerful breakout forces, the controllability of the load sensing, flow-sharing hydraulic system and the 422F is capable of producing high levels of productivity with the minimum of operator effort. The boom is a narrow design, ensuring maximum visibility to the work tool.

Extendible Stick

The 422F is available with an extendible stick that increases dig depth and reach capability, enhancing the machines versatility and utilization. A sliding inner section design keeps the wear pads out of the dirt, extending adjustment and replacement intervals. When wear pad adjustment is necessary, the adjustment bolts are easy to access, taking minutes to adjust, without the need to disassemble the E-Stick. Auxiliary lines for operating work tools have been routed so that they are protected from damage when working in the narrowest of trenches.

Cushion Swing

The 422F is equipped with Cushion Swing, which enables very fast trenching by damping the boom oscillation down when returning to trench with the hoe.

Powered Side Shift (Optional)

Slide the backhoe across the entire width of the H-frame remotely, from the comfort of your seat.





Hydraulics

Smooth and efficient operation. Whenever you need it, wherever you need it most.

Hydraulic Performance

It's rare that you'll be working at full production 100% of the time, so why should the machine be working flat out, using more fuel, making more noise, and increasing wear? The 422F has a load-sensing, closed center hydraulic system, which closely matches power and flow to the demand needed by the job in hand. So whether you're in full trenching mode, or delicately digging around services, you are in total control. In applications such as loading and carrying, speed is important, and the system will match the flow needed to get the job done quickly and efficiently. As there is minimal demand on the system unless needed, there are less parasitic power losses enabling more power to be available for rimpull – providing better loading and roading.

Flow Sharing Valves

The 422F features flow-sharing hydraulic valves, ensuring that the correct flow of oil reaches the implement cylinders, providing greater control and eliminating oil starvation when operating multiple functions.

Hardware

The 422F is equipped with a highly efficient variable displacement piston pump. The reliable high performance hydraulic hose is constructed from two strong steel braided layers and O-Ring face seal fittings provides a robust system ensuring excellent durability and resistance to damage from pressure spikes and hydraulic pulsing.

Work Tools

Do more, be more.

With a range of versatile tools available.

Loader Buckets

General Purpose and hydraulic Multi Purpose buckets are either Pin-on mounted or attached to the quick coupler. They can be fitted with either cutting edge or bolt on teeth. MP buckets are optional with fold over pallet forks.

Backhoe Buckets

For different soil types and digging applications there are multiple bucket designs available, including; Standard Duty, Heavy Duty, High Capacity and Extreme Service (Rock) Buckets. Either bolt on teeth or weld on adapters with pin on teeth can be fitted. Ditch Cleaning, Cribbing and Trapezoidal Buckets are also available.

Auger

The Cat Auger is designed for drilling holes in the earth for a wide variety of applications. A wide variety of Auger bits and drive systems are available, to provide you with the best tool for the job.

Cold Planer

The Cat Cold Planer is designed for both asphalt and concrete planing work, having features like depth control and self-leveling.

Compactor Plate

The Cat Vibratory Plate Compactor can be used to compact soil, sand or gravel in trenching and sloping applications prior to pouring concrete or laying asphalt.

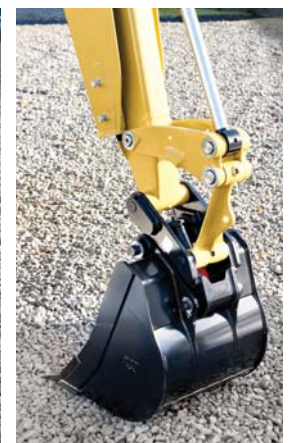
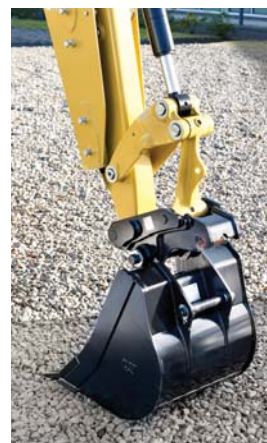
Hammer

Cat Hydraulic Hammers are designed to break up concrete, asphalt or rock and deliver constant power when operated. Silenced options are available to meet with local regulations.

Dual Lock Couplers

Enhance your machines' versatility with a mechanical or hydraulic quick coupler, for easy switching of work tools. Couplers maintain a tight fit throughout their lifetime due to an innovative wedge design.

Contact your Cat dealer for more information.





40 km/h Power-Shuttle Transmission

The 422F comes equipped with 40 km/h Power-Shuttle transmission, improving roading speed and providing better spacing between gear ratios. It utilizes a constant mesh, synchronized, four speed system. The forward/reverse lever on the steering column is placed for easy direction changes on the move, and the gear selection is from the floor mounted shift lever.

Cat Engine

The 422F is fitted with the proven Cat 3054C engine that meets Stage II emission regulation EU Directive 97/68/EC. With a choice of either a naturally aspirated engine, or a more powerful turbocharged engine, the performance of the machine can be matched to your needs. All engines are reliable 4 cylinder, 4 stroke direct injection diesel engines equipped with standard glow plug for optimum cold weather performance. This provides reliable starting performance down to -18° C. All engines feature a reliable gear driven water pump and a durable polyvee front end auxiliary drive belt that is automatically tensioned for longer life reducing operating costs.



Power Train

Less time traveling, more time working.

High Ambient Cooling

The 422F is equipped with a High Ambient engine cooling package, allowing the machine to be operated in temperatures up to 50° C.

Air Filter

A dry type axial air cleaner with an integral precleaner and automatic integrated dust ejection system extends the life of the air filter when working in dusty conditions, reducing service time and costs.

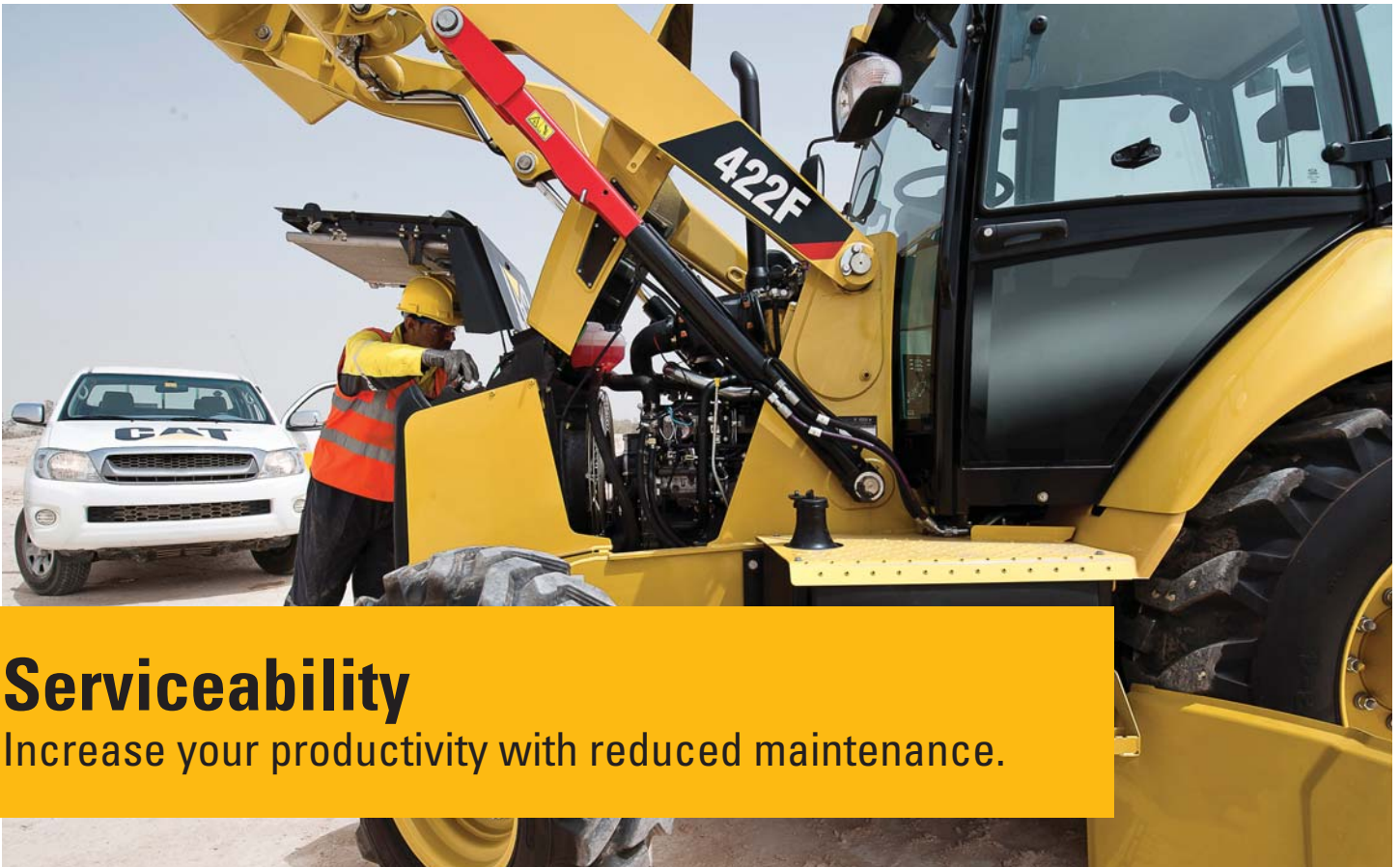
Axles and Differential Lock

The heavy duty Cat axles fitted to the 422F have been designed to be used in the most arduous of conditions and the rear axle Differential Lock ensures that traction is maintained in all types of ground conditions.

Dual Brakes

The rear axle is an enclosed design with a wet multiplate Kevlar braking system. This system is oil immersed and self adjusting, and allows operation in the harshest environments. The system has dual brake pedals for split braking in tight corners.





Serviceability

Increase your productivity with reduced maintenance.

Reduced Maintenance

The new, easy access engine cover sets the benchmark for access to all daily check points, such as; fill points, air cleaner, washer bottles, visual indicators, etc. It includes a first-in-class hinged cooling pack, making regular maintenance even more convenient for the operator. The F Series carries on the tradition with sealed for life axle oscillation, driveshaft universal joints, trunnions, etc. Daily maintenance, which can be a chore for the busy operator, is kept to a minimum on the 422F.

Boom and Stick Design

The Boom and Stick design allows all wear adjustment to be done with Stick in-situ, using a simple adjustment mechanism. The stabilizer legs are also externally adjustable, reducing machine downtime and inconvenience.

Cat Filters

All Cat filters are vertically mounted for spill free servicing and reduced oil contamination. Cat filters are also low micron filters, filtering even the tiny particles from the oil and keeping the engine, transmission and hydraulic system running smoothly for years.

Scheduled Oil Sampling

Your Cat dealer will be able to provide the Cat S-O-SSM. This enables your dealer to analyze wear before problems arise, so that premature failure can be avoided, and corrective action can take place to reduce costs and downtime.

Storage

Having somewhere to keep your tools is important on any machine and that is why on the 422F we have increased the storage area in the large non-metallic storage box.

Customer Support Agreements (CSA's)

Your Cat dealer can offer a comprehensive range of CSA's which can be individually tailored to suit your finances and requirements. Dealers can offer a range of options from a full Preventative Maintenance with S-O-S package to a Parts Only CSA. Protect your valuable investment and know exactly what your monthly payments will be to help you run your business.

Finance

Have you explored the range of options available from your dealer to finance your machine? They can offer a selection of attractive packages tailored exactly to your requirements.

Machine Selection

Your dealer can help guide you with your machine purchase decision, based on your requirements and help keep operating costs to a minimum. Is the machine you have in mind exactly the best for your job, or could there be a more suitable solution?

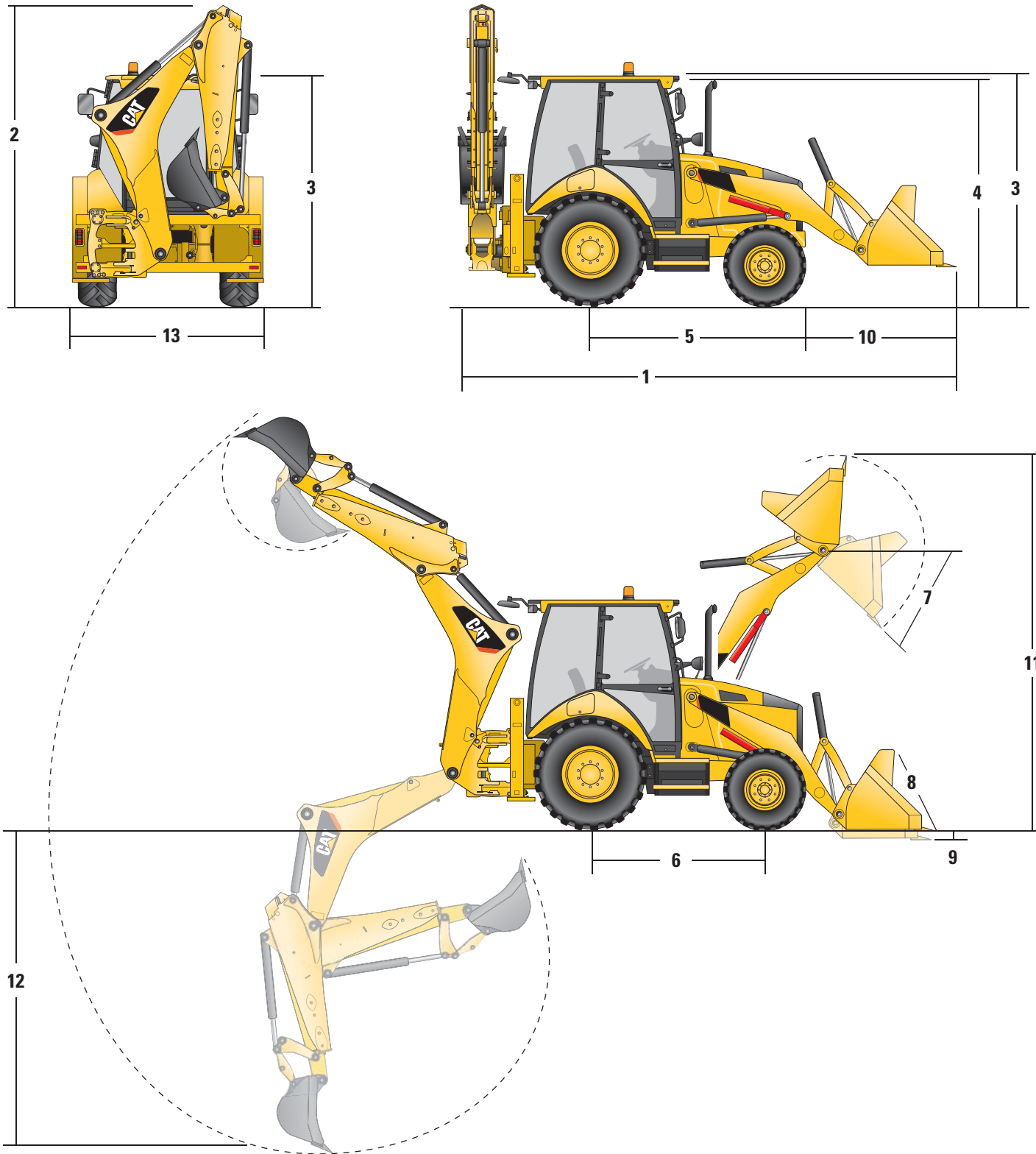
Your dealer can also advise on operating techniques for your machine which will minimize wear and tear, maximize productivity, and lower owning and operating costs.



Customer Support

World class customer support services.

422F Backhoe Loader Specifications



Measurements based on: 249-9248 Goodyear tires; Laborer 11L-16 12PR (Front) and Sure Grip 16.9-28 12PR (Rear)

Machine Dimensions

	GP	MP	MP with forks
Overall length (loader on ground) S-Stick	7346 mm	7313 mm	7313 mm
Overall length (loader on ground) E-Stick	7348 mm	7312 mm	7312 mm
1 Overall length in roading position (15 degree angle) S-Stick	5759 mm	5752 mm	5752 mm
Overall length in roading position (15 degree angle) E-Stick	5759 mm	5752 mm	5752 mm
Overall transport length S-Stick	5772 mm	5728 mm	5728 mm
Overall transport length E-Stick	5772 mm	5728 mm	5728 mm
2 Overall transport height S-Stick	3810 mm	3810 mm	3810 mm
Overall transport height E-Stick	3799 mm	3799 mm	3799 mm
Overall width (machine, not including bucket)	2280 mm	2280 mm	2280 mm
3 Height to top of cab/canopy	2829 mm	2829 mm	2829 mm
4 Height to top of exhaust stack	2681 mm	2681 mm	2681 mm
Height to loader hinge pin (transport)	400 mm	361 mm	361 mm
Ground clearance (minimum)	320 mm	320 mm	320 mm
5 Rear axle centerline to front grill	2705 mm	2705 mm	2705 mm
Front wheel tread gauge	1895 mm	1895 mm	1895 mm
Rear wheel tread gauge	1714 mm	1714 mm	1714 mm
6 Wheelbase 2WD/AWD	2200 mm	2200 mm	2200 mm

Dimensions and Performance – Loader

	GP	MP	MP with forks
Width	2406 mm	2406 mm	2406 mm
Lift breakout force	46.2 kN	44.9 kN	43.3 kN
Tipping load at breakout point	6510 kg	6470 kg	6323 kg
7 Dump angle at full height	46°	46°	46°
8 Maximum bucket rollback at ground level	37°	38°	38°
9 Digging depth	168 mm	201 mm	201 mm
Maximum grading angle	113°	115°	115°
Width of dozer cutting edge	—	2406 mm	2406 mm
10 Grill to bucket cutting edge, carry position	1495 mm	1457 mm	1457 mm
11 Maximum operating height	4293 mm	4324 mm	4324 mm
Jaw opening maximum	—	790 mm	790 mm
Bucket jaw clamping force	—	56 kN	56 kN
Weight (does not include teeth or forks)	441 kg	680 kg	705 kg

Dimensions and Performance – Backhoe

	Standard	E-stick Retracted	E-stick Extended
Digging depth, manufacturer's maximum	4843 mm	4848 mm	5765 mm
Digging depth, 2440 mm flat bottom	3837 mm	3858 mm	4930 mm
12 Digging depth, 610 mm flat bottom	4199 mm	4203 mm	5202 mm
Reach from rear axle centerline at ground line	6972 mm	6972 mm	7904 mm
Maximum operating height	5739 mm	5741 mm	6361 mm
Loading height	4063 mm	4071 mm	4691 mm
Swing arc	180°	180°	180°
Bucket rotation	205°	205°	205°
13 Stabilizer (overall width)	2241 mm	2241 mm	2241 mm

422F Backhoe Loader Specifications

Engine

Engine Model	Cat 3054C*
Rated Power (standard)	2,200 rpm
Gross – ISO 14396	56.5 kW (74 hp)
Net – ISO 9249	53 kW (71 hp)
Net – 80/1269/EEC	53 kW (71 hp)
Rated Power (optional)	2,200 rpm
Gross – ISO 14396	68.5 kW (91 hp)
Net – ISO 9249	65 kW (87 hp)
Net – 80/1269/EEC	65 kW (88 hp)
Net Torque Rise @ 1,400 rpm – SAE J1349	
56.5 kW (74 hp)	27%
68.5 kW (91 hp)	38%
Bore	105 mm
Stroke	127 mm
Displacement	4.4 L

- All power ratings to nearest kW/hp (no decimal places).
- Net power advertised is the power available at the flywheel when the engine is equipped with fan, air cleaner, muffler and alternator.
- Can be operated at altitudes up to 600 m (NA Engine) or 3000 m for Turbo engine models.

* Stage II EU Emission Directive 97/68/EC.

Features

- Three ring pistons made of lightweight silicon/aluminum alloy for strength and maximum thermal conductivity.
- Forged, chrome/molybdenum-steel crankshaft with nitro-carbonized journals.
- Front and rear crankshaft oil seals are ‘lip’ type Viton and PTFE designs featuring an integral dust lip.
- Heat resistant silicon-chrome steel intake and STELLITE faced exhaust valves are used for long engine life.
- Cylinder block is high strength, cast iron alloy of deep-skirt, monobloc design for increased strength and long life.
- Cylinder head is high strength, cast iron alloy construction with extra duty wall and head thickness. Intake and exhaust ports are precision cast to promote optimum gas flow.
- Direct injection fuel system provides accurate fuel delivery. Self priming electric lift pump for improved cold start capability. One filter fuel system for reduced maintenance costs.
- High low engine torque for better machine performance.
- Dry type, axial seal air cleaner with automatic, integrated dust ejection providing more efficient pre-separation.
- Direct electric 12 volt starting and charging system with 750 CCA group 31 maintenance free battery.

Axles

Choice of standard Two Wheel Drive or optional All Wheel Drive.

Features

- Heavy-duty rear axle with self adjusting inboard brakes, differential lock and final drives.
- All Wheel Drive (AWD) is engaged by front console panel switch or by brake pedal during all-wheel-braking operation. AWD can be engaged on-the-go, under load, in any gear, forward or reverse. 2 WD and AWD have outer final drives for easy maintenance.
- AWD front axle is pendulum mounted and permanently sealed and lubricated, requiring no daily maintenance. Also features double-acting steering cylinder with 52° steering angle for increased maneuverability.

Steering

Full hydrostatic steering controlled by a hand-metering unit. Secondary steering system available to meet roading regulations in various countries and to meet ISO 5010.

Steering

Type	Front Wheel
Power Steering	Hydrostatic
Cylinder, One (1) Double-acting (2WD/AWD)	
Bore	65 mm
Stroke	120 mm
Rod Diameter	36 mm
Turning Circle	
Inner Wheel Not Braked (2WD/AWD)	
Outside Front Wheels	8180 mm
Outside Widest Loader Bucket	10 970 mm

Brakes

Fully enclosed, hydraulic, multiple discs.

Features

- Inboard oil-immersed, hydraulically actuated multiple Kevlar discs on final drive input shaft.
- Completely enclosed and sealed.
- Self-adjusting.
- Dual foot-operated boosted brake pedals can be interlocked for roading.
- Parking/secondary brakes are independent of the service brake system. Parking brake is mechanically applied through a hand lever located in the right side console.
- Meets ISO 3450:1996 requirements.

Weights

Standard single tilt loader, with 1.0 m³ general purpose loader bucket, 610 mm standard duty backhoe bucket, 80 kg operator and a full fuel tank.

Weights

Operating Weight (Range)	7481-9261 kg
Air Conditioning	39 kg
Ride Control	25 kg

AWD

Multi Purpose Bucket	1.03 m ³
with Fold-Over Forks	808 kg
without Fold-Over Forks	605 kg
Extendible Stick (Excludes Front Counterweight)	299 kg

Counterweights

Light	115 kg
Medium	250 kg
Heavy	485 kg

Minimum Counterweight Recommendations:

Standard Stick (Power Train AWD)

General Purpose	115 kg
Multi Purpose	Base
Multi Purpose with Fold-Over Forks	Base

Extendible Stick (Power Train AWD)

General Purpose	498 kg
Multi Purpose	115 kg
Multi Purpose with Fold-Over Forks	Base

Total Gross Vehicle Weight Not to Exceed 10 200 kg

Cab Features

	Standard
Full Glazing	✓
RH Opening Door with Opening Window	✓
LH Opening Door with Opening Window	✓
2 Rear Side Fixed Windows	✓
Air Suspension Seat	✓
8 Working Lights	✓
Floor Mat	✓
LH Storage Console	✓
Fixed Steering Column	✓
Tilt Steering Column	✓
Beacon Socket (2)	✓
Internal Power Socket	✓
Radio Ready Headliner	✓
Individual Cluster Display	✓
Sun Visor	✓
Steering Wheel Knob	✓
Cab Heater	✓
Cab Air Conditioning*	optional
Seat Belt (50 mm)	✓

* Only available on Turbocharged models.

Canopy Features

	Standard
No Glazing	✓
LH Storage Console	✓
4 Working Lights	✓
Basic Suspension Seat	✓
Floor Mat	✓
Fixed Steering Column	✓
Rearview Mirror	✓
Individual Cluster Display	✓
Seat Belt (50 mm)	✓

422F Backhoe Loader Specifications

Service Refill Capacities

Cooling System	
with Heater	19.2 L
Fuel Tank	160 L
Engine with Oil Filter	9.1 L
Transmission	
Power Shuttle 2WD	19 L
Power Shuttle AWD	18 L
Rear Axle (Rigid/Steerable)	
Center Housing	16.5 L
Wheel End/Final Drive (Volume per Side)	1.7 L
Front Axle AWD	
Center Housing	11 L
Wheel End/Final Drive (Volume per Side)	0.7 L
Hydraulic System	95 L
Hydraulic Tank	40 L

Hydraulic System

Load-sensing, closed-center system.	
Variable-flow, closed-center load-sensing system provides full hydraulic force to cutting edges at all engine speeds. Provides low fuel consumption and low effort controls.	
Type	Closed-center
Pump Type	Variable-flow, axial-piston
Pump Capacity	125 L/m @ 2,200 rpm
System Pressure	
Backhoe	230 bar
Loader	250 bar

Transmission

The standard power-shuttle transmission provides four speed forward and reverse, full synchromesh in all gears. Constant mesh gears on all ratios permit on-the-go shifting of all gears, up or down. Neutral start provision prevents starting while shuttle is engaged. Torque converter freewheel clutch allows the converter stator to free-wheel during high speed, low-load conditions, such as roading.

Transmission Disconnect

Hand operated power disconnect for easy, on-the-go shifting and full engine rpm when in the loading cycle.

Forward/Reverse Electric Power Shuttle

Conveniently placed, hand operated lever provides instant direction changes between forward and reverse through power hydraulic clutches.

Torque Converter

Single stage, 2.64 stall ratio.

Travel Speeds

Travel speeds of All Wheel Drive backhoe loader at full throttle, when equipped with 16.9 × 28 rear tires.

Forward	
1st	6 km/h
2nd	9.6 km/h
3rd	20 km/h
4th	40 km/h
Reverse	
1st	6 km/h
2nd	9.6 km/h
3rd	20 km/h
4th	40 km/h

Operator Station

ROPS/FOPS is standard.

ROPS (Roll Over Protective Structure) offered by Caterpillar for this machine meets ROPS criteria ISO 3471:1994 and FOPS (Falling Objects Protective Structure) criteria ISO 3449:1992.

Standard Equipment

Standard equipment may vary. Consult your Cat dealer for details.

- Air cleaner, dry type, axial seal with precleaner and filter condition indicator
- Alarm, back up
- Alternator, 120-amp, 12 volt
- Antifreeze (to -37° C)
- Audible system fault alarm
- Backhoe, two lever (mechanical) control
- Battery isolator
- Battery jump start connection
- Battery, maintenance free, 750 CCA
- Boom, transport lock
- Brace, lift cylinder
- Brakes, boosted, Kevlar disc
- Cable stabilizer controls
- Cat 3054C* (56.5 kW) engine
- Coat hook
- Electro-hydraulic slide frame lock
- Engine enclosure
- Fan, cooling and fan guard
- Fast reversing shuttle, all gears
- Flashing hazard/signal lights
- Floor mat, rubber
- Front and rear windshield wipers
- Front axle, pendulum mount
- Front grill with bumpers
- Front headlights
- Gauges: coolant temperature, fuel level, tachometer, hour meter
- Ground line fuel fill with 160 L capacity
- Grouser style stabilizer shoes
- High ambient cooler package
- Hinged cooling pack
- Hydraulic oil filter cartridge
- Hydraulic oil cooler
- Hydraulic suction strainer
- Indicators: air cleaner service, parking brake on, engine coolant, hydraulic oil level sight gauge
- Instrument panel lights
- Intermittent front and rear wash/wipe
- Key start/stop system with auxiliary position
- Lifting eye, backhoe (non-EU countries only)
- Lights, working (2 front, 2 rear) (canopy)
- Load sensing, variable flow system with axial piston pump
- Mainframe, narrow width (2235 mm)
- Mirrors, external (2)
- Operator's station (canopy)
- Power receptacle, 12 V (2)
- Power steering, hydrostatic
- ROPS cab with heater, defroster, pressurizer and cab recirculating fan
- Seat belt, retractable (50 mm)
- Seat with fabric or vinyl seat cover
- Security padlocks
- Self-cancelling directional indicators
- Spin-on fuel, engine and transmission oil filters
- Standard stick
- Starting system, thermal aid
- Stop and tail lights (2)
- Storage box, external, lockable
- Swing transport lock
- Tires (2 front, 2 rear)
- Torque converter
- Throttles, hand and foot
- Transmission, four-speed synchromesh
- Transmission neutralizer switch
- Warning horn, front electric
- Water separator

*Standard for less regulated countries, meets Stage II EU Emission Directive 97/68/EC.

422F Optional Equipment

Optional Equipment

Optional equipment may vary. Consult your Cat dealer for details.

- Air conditioning (not available with naturally aspirated engine)
- All Wheel Drive
- Attachments, front loader
 - General purpose bucket 1.0 m³
 - Multi purpose bucket 1.03 m³ or 1.03 m³ with forks
- Attachments, backhoe work tools
 - Quick Coupler (mechanical)
- Cat 3054C DIT engine* (68.5 kW)
- Counterweights
 - 115 kg
 - 250 kg
 - 485 kg
- Cutting edge, bolt on
 - Single piece
 - Two piece
- Fenders, front, All Wheel Drive
- Guards
 - AWD driveshaft
 - Teeth (GP/MP)
 - Rear lights, roading
- Hydraulic valves, loader
 - 3rd valve for GP/MP
 - Hydraulic valves (auxiliary)
- Hydraulic lines
 - Hammer lines to stick
 - Quick disconnects
- Lights
 - Number plate, rear
 - Roading
 - Working, 8 lights
- Mirror, exterior rearview, large
- Operator's station (cab)
- Power sideshift
- Ride control
- Rotating beacon
- Stabilizer street pads
- Stick, extendible
- Tilt steering wheel
- Transport locks
- Vandalism protection
- Visor cab

*Standard for higher regulated countries, meets Stage II EU Emission Directive 97/68/EC.

422F Backhoe Loader

For more complete information on Cat products, dealer services, and industry solutions, visit us on the web at www.cat.com

© 2012 Caterpillar Inc.
All rights reserved

Materials and specifications are subject to change without notice. Featured machines in photos may include additional equipment. See your Cat dealer for available options.

CAT, CATERPILLAR, SAFETY.CAT.COM, their respective logos, "Caterpillar Yellow" and the "Power Edge" trade dress, as well as corporate and product identity used herein, are trademarks of Caterpillar and may not be used without permission.

AEHQ6700 (10-2012)

