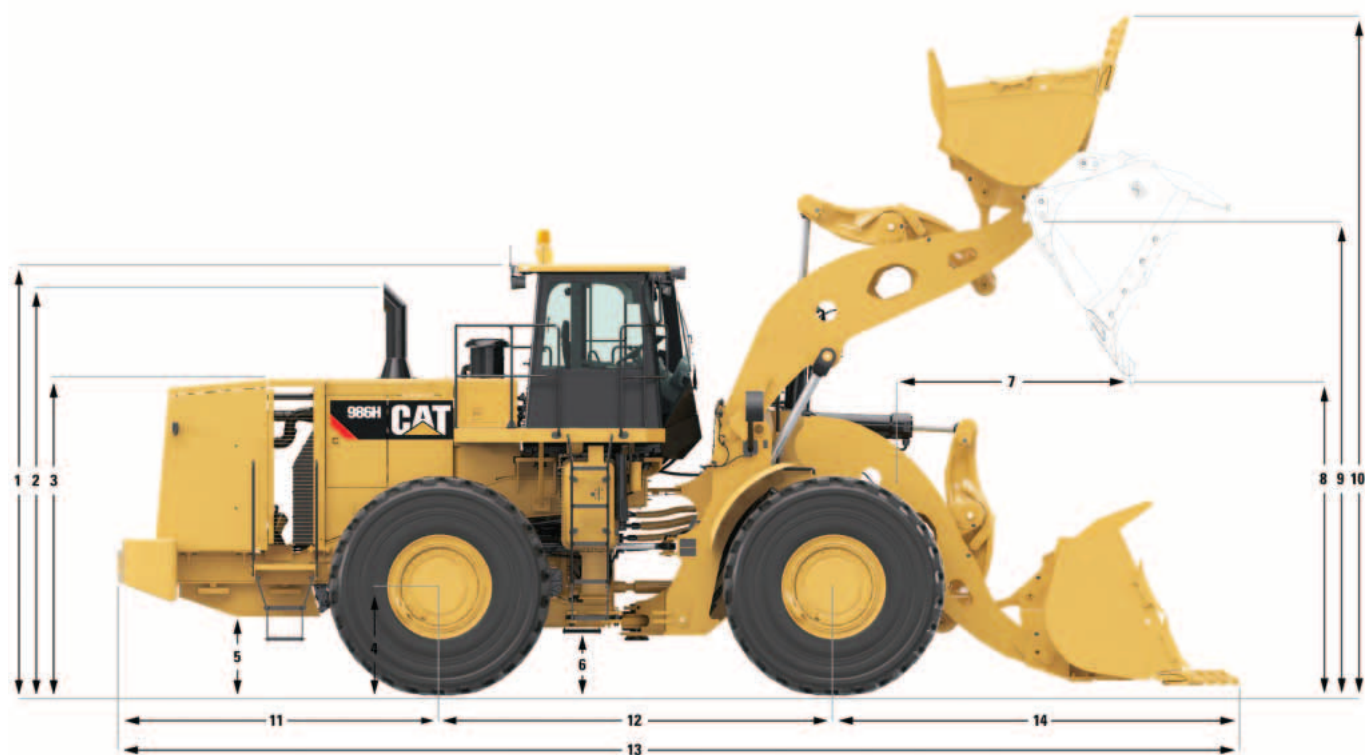


986H Wheel Loader

Dimensions

All dimensions are approximate.



	Standard Lift Linkage		High Lift Linkage	
1 Ground to Top of ROPS	4110 mm	13.5 ft	4110 mm	13.5 ft
2 Ground to Top of Exhaust Stacks	3940 mm	12.9 ft	3940 mm	12.9 ft
3 Ground to Top of Hood	2991 mm	9.8 ft	2991 mm	9.8 ft
4 Ground to Center of Rear Axle	978 mm	3.2 ft	978 mm	3.2 ft
5 Ground to Fuel Tank Clearance	691 mm	2.3 ft	691 mm	2.3 ft
6 Ground to Lower Hitch Clearance	459 mm	1.5 ft	459 mm	1.5 ft
7 Reach at Maximum Lift	2022 mm	6.6 ft	1904 mm	6.2 ft
8 Clearance at Maximum Lift	3234 mm	10.6 ft	3738 mm	12.3 ft
9 B-Pin Height at Maximum Lift	4912 mm	16.1 ft	5371 mm	17.6 ft
10 Maximum Overall Height, Bucket Raised	6671 mm	21.9 ft	7067 mm	23.2 ft
11 Rear Axle Center Line to Bumper	3132 mm	10.3 ft	3132 mm	10.3 ft
12 Wheel Base	3810 mm	12.5 ft	3810 mm	12.5 ft
13 Maximum Overall Length	10 907 mm	35.8 ft	11 290 mm	37.0 ft
14 Front Axle Centerline to Bucket Tip	3987 mm	13.1 ft	4370 mm	14.3 ft

986H Wheel Loader

Bucket Capacity/Material Density Selection Guide

Standard Lift – 10 tonnes (11 tons) Rated Payload

Material Density				Bucket Volume	
kg/m ³	lb/yd ³	tonnes/m ³	tons/yd ³	m ³	yd ³
1632-1795	2,750-3,025	1.63-1.80	1.38-1.51	6.1	8.0
1740-1914	2,933-3,227	1.74-1.91	1.46-1.61	5.7	7.5
1865-2051	3,143-3,457	1.86-2.05	1.57-1.73	5.4	7.0

High Lift – 9.5 tonnes (10.5 tons) Rated Payload

Material Density				Bucket Volume	
kg/m ³	lb/yd ³	tonnes/m ³	tons/yd ³	m ³	yd ³
1553-1708	2,618-2,879	1.55-1.71	1.31-1.44	6.1	8.0
1659-1822	2,796-3,072	1.66-1.82	1.39-1.54	5.7	7.5
1775-1952	2,992-3,291	1.78-1.95	1.50-1.65	5.4	7.0

Note: Rated Payload is the material weight in the bucket that the loader is designed to carry, excluding the weight of the bucket, GET, and wear material. Rated Payloads are published at 100%, even though Caterpillar does allow 110%. These values are given in terms of mass. There is no consideration to loose density weights of various materials since they are so diverse.

986H Wheel Loader

Operating Specifications – Standard Lift

Tires: 35/65-33 Part Number: 359-4566

Bucket Type		Rock		
Ground Engaging Tools		Teeth & Segment		
Cutting Edge Type		Spade		
Bucket Part No.		369-2020	369-2030	369-2040
Struck Capacity	m ³	4.4	4.8	5.1
	yd ³	5.8	6.2	6.7
Heaped Capacity (rated)	m ³	5.4	5.7	6.1
	yd ³	7.0	7.5	8.0
Width	mm	3772	3772	3772
	ft	12.4	12.4	12.4
Dump Clearance at Full Lift and 45° Discharge (edge)	mm	3420	3374	3328
	ft	11.2	11.1	10.9
Dump Clearance at Full Lift and 45° Discharge (with teeth)	mm	3280	3234	3188
	ft	10.8	10.6	10.5
Reach at Lift and 45° Discharge (edge)	mm	1858	1904	1950
	ft	6.1	6.2	6.4
Reach at Lift and 45° Discharge (with teeth)	mm	1976	2022	2068
	ft	6.5	6.6	6.8
Reach with Lift Arms Horizontal and Bucket Level	mm	3657	3722	3787
	ft	12.0	12.2	12.4
Digging Depth	mm	160	160	160
	in	6.3	6.3	6.3
Overall Length	mm	10 842	10 907	10 972
	ft	35.6	35.8	36.0
Overall Height with Bucket at Full Raise	mm	6609	6671	6734
	ft	21.7	21.9	22.1
Loader Clearance Turning Radius (SAE carry with teeth)	mm	17 215	17 248	17 281
	ft	56.5	56.6	56.7
Full Dump Angle	deg	–50.2	–50.2	–50.2
Static Tipping Load Straight (no tire squash)	kg	29 147	28 969	28 791
	lb	64,259	63,866	63,472
Static Tipping Load Straight (with tire squash)	kg	27 698	27 509	27 319
	lb	61,064	60,647	60,228
Static Tipping Load – Full Turn (articulated 35°) (no tire squash)	kg	25 845	25 673	25 501
	lb	56,979	56,600	56,220
Static Tipping Load – Full Turn (articulated 35°) (with tire squash)	kg	23 846	23 661	23 476
	lb	52,571	52,164	51,756
Breakout Force	kN	356	341	328
	lb-f	79,945	76,722	73,722
Operating Weight	kg	42 011	42 118	42 225
	lb	92,618	92,855	93,090
Weight Distribution at SAE Carry (unloaded) – Front	kg	20 493	20 689	20 885
	lb	45,178	45,612	46,044
Weight Distribution at SAE Carry (unloaded) – Rear	kg	21 518	21 429	21 340
	lb	47,439	47,242	47,046
Weight Distribution at SAE Carry (loaded) – Front	kg	37 109	37 340	37 571
	lb	81,811	82,320	82,830
Weight Distribution at SAE Carry (loaded) – Rear	kg	14 902	14 778	14 654
	lb	32,853	32,580	32,307

986H Wheel Loader

Operating Specifications – High Lift

Tires: 35/65-33 Part Number: 359-4566

Bucket Type		Rock		
Ground Engaging Tools		Teeth & Segment		
Cutting Edge Type		Spade		
Bucket Part No.		369-2020	369-2030	369-2040
Struck Capacity	m ³	4.4	4.8	5.1
	yd ³	5.8	6.2	6.7
Heaped Capacity (rated)	m ³	5.4	5.7	6.1
	yd ³	7.0	7.5	8.0
Width	mm	3772	3772	3772
	ft	12.4	12.4	12.4
Dump Clearance at Full Lift and 45° Discharge (edge)	mm	3879	3833	3787
	ft	12.7	12.6	12.4
Dump Clearance at Full Lift and 45° Discharge (with teeth)	mm	3738	3693	3647
	ft	12.3	12.1	12.0
Reach at Lift and 45° Discharge (edge)	mm	1798	1840	1882
	ft	5.9	6.0	6.2
Reach at Lift and 45° Discharge (with teeth)	mm	1904	1946	1988
	ft	6.2	6.4	6.5
Reach with Lift Arms Horizontal and Bucket Level	mm	4021	4086	4151
	ft	13.2	13.4	13.6
Digging Depth	mm	208	208	208
	in	8.2	8.2	8.2
Overall Length	mm	11 290	11 355	11 420
	ft	37.0	37.3	37.5
Overall Height with Bucket at Full Raise	mm	7067	7130	7193
	ft	23.2	23.4	23.6
Loader Clearance Turning Radius (SAE carry with teeth)	mm	17 612	17 648	17 684
	ft	57.8	57.9	58.0
Full Dump Angle	deg	–49.9	–49.9	–49.9
Static Tipping Load Straight (no tire squash)	kg	24 759	24 595	24 431
	lb	54,584	54,223	53,862
Static Tipping Load Straight (with tire squash)	kg	23 632	23 458	23 284
	lb	52,100	51,716	51,332
Static Tipping Load – Full Turn (articulated 35°) (no tire squash)	kg	21 845	21 686	21 527
	lb	48,159	47,809	47,458
Static Tipping Load – Full Turn (articulated 35°) (with tire squash)	kg	20 251	20 081	19 911
	lb	44,646	44,271	43,896
Breakout Force	kN	355	341	328
	lb-f	79,869	76,650	73,652
Operating Weight	kg	42 836	42 943	43 050
	lb	94,437	94,673	94,909
Weight Distribution at SAE Carry (unloaded) – Front	kg	22 262	22 471	22 680
	lb	49,079	49,541	50,002
Weight Distribution at SAE Carry (unloaded) – Rear	kg	20 574	20 472	20 370
	lb	45,358	45,132	44,907
Weight Distribution at SAE Carry (loaded) – Front	kg	38 451	38 691	38 931
	lb	84,769	85,299	85,828
Weight Distribution at SAE Carry (loaded) – Rear	kg	13 457	13 324	13 191
	lb	29,668	29,375	29,081