

# 301.7D Mini Hydraulic Excavator

## Lift Capacity at Ground Level

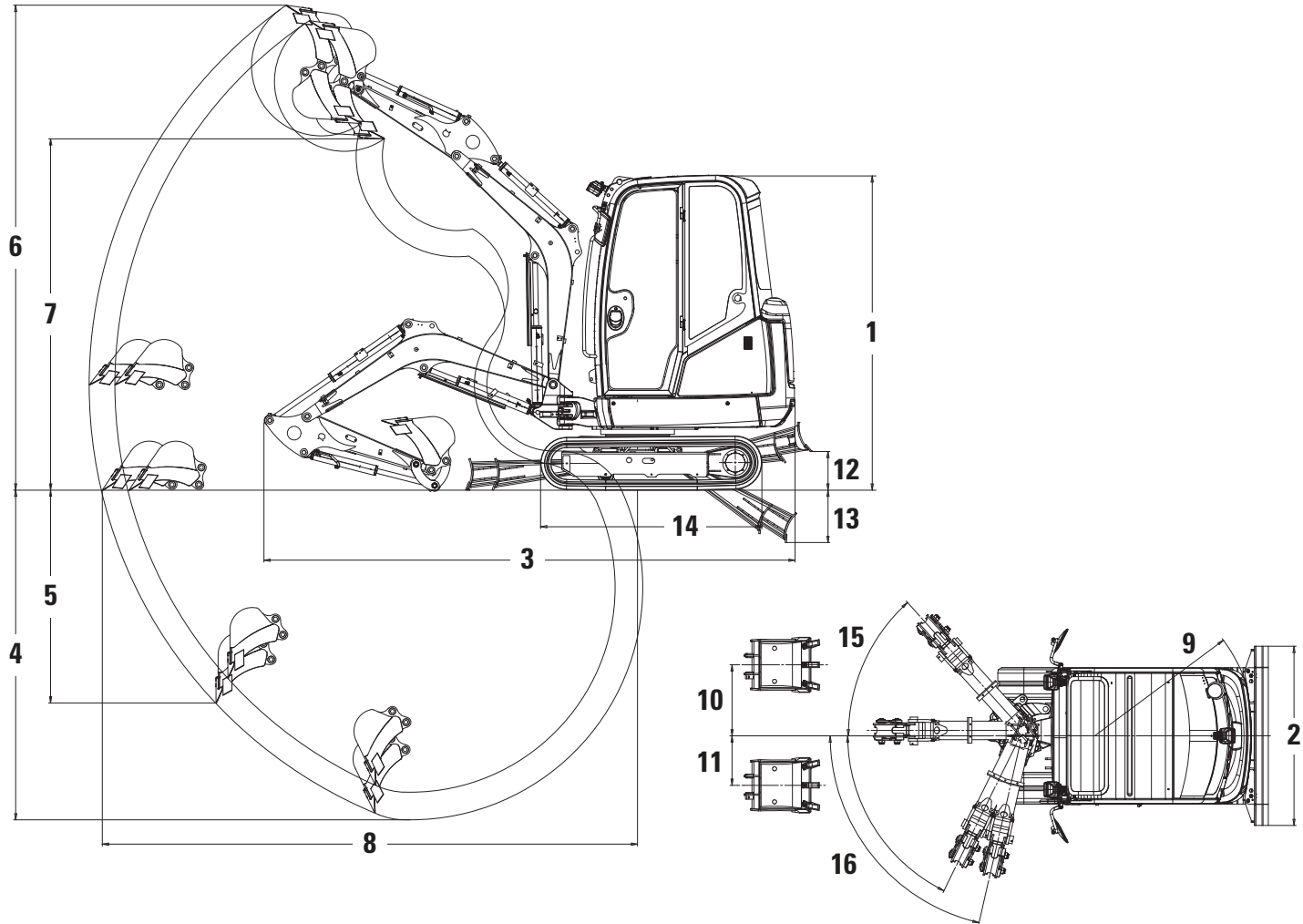
Lift Point Radius	2 m (6'7")				2.5 m (8'2")				3 m (9'10")				Maximum			
	Front		Side		Front		Side		Front		Side		Front		Side	
	kg	lb	kg	lb	kg	lb	kg	lb	kg	lb	kg	lb	kg	lb	kg	lb
Long Stick/ Fixed Undercarriage	835*	1,840*	580	1,279	605*	1,334*	400	882	470*	1,036*	325	717	440*	970*	300	661

\*The above loads are in compliance with hydraulic excavator lift capacity rating standard ISO 10567:2007 and they do not exceed 87% of hydraulic lifting capacity or 75% of tipping capacity. The excavator bucket weight is not included on this chart.

# 301.7D Mini Hydraulic Excavator

## Dimensions

All dimensions are approximate.



	Standard Stick		Long Stick	
1 Height	2290 mm	7'5"	2290 mm	7'5"
2 Width	990 mm-1300 mm	3'3"-4'3"	990 mm-1300 mm	3'3"-4'3"
3 Transport Length (arm lowered)	3855 mm	12'8"	3855 mm	12'8"
4 Maximum Digging Depth	2200 mm	7'3"	2400 mm	7'11"
5 Maximum Vertical Dig Depth	1430 mm	4'8"	1620 mm	5'4"
6 Maximum Dig Height	3485 mm	11'5"	3595 mm	11'9"
7 Maximum Dump Height	2500 mm	8'3"	2610 mm	8'7"
8 Maximum Reach at Ground Level	3700 mm	12'2"	3895 mm	12'9"
9 Tail Swing Radius	1170 mm	3'10"	1170 mm	3'10"
10 Maximum Boom Offset (RH)	520 mm	1'8"	520 mm	1'8"
11 Maximum Boom Offset (LH)	360 mm	1'2"	360 mm	1'2"
12 Maximum Dozer Lift Height	200 mm	8"	200 mm	8"
13 Maximum Dozer Dig Depth	320 mm	1'0"	320 mm	1'0"
14 Length of Undercarriage (Fixed)	1445 mm	4'9"	1445 mm	4'9"
14 Length of Undercarriage (Extending)	1600 mm	5'3"	1600 mm	5'3"
15 Boom Swing Angle (RH)	48°		48°	
16 Boom Swing Angle (LH)	77°/64°		77°/64°	