



Cat[®] TL943C

Telehandler

Specifications

Engine

Model	Cat [®] C4.4 ACERT™ Tier 3	
Gross Power (Basic)	82.1 kW	110.1 hp
Maximum Torque (Standard)	486 Nm at 1400 rpm	358 lb-ft
Bore	105 mm	4.1 in
Stroke	127 mm	5 in
Displacement	4.4 L	268 .5 cu in

Weights

Operating Weight	12 122 kg	26,725 lb
------------------	-----------	-----------

Operating Specifications

Rated Load Capacity	4082 kg	9,000 lb
Maximum Lift Height	13.1 m	43 ft
Maximum Forward Reach	9.6 m	31.5 ft
Frame Leveling	10°	
Top Travel Speed	32.7 kph	20.3 mph
Capacity at Max Height	3175 kg	7,000 lb
Capacity at Max Reach	544 kg	1,200 lb
Turning Radius over Tires	3.7 m	12 ft
Drawbar Pull (Loaded)	124.6 kN	28,000 lb

Hydraulic System

Variable displacement load sensing axial piston pump		
System Operating Pressure	276 bar	4,000 psi
Auxiliary Hydraulic Pressure	207 bar	3,000 psi
Auxiliary Hydraulic Flow at Boom Head	38 L/min	10 gal/min
<ul style="list-style-type: none"> Auxiliary Hydraulic Circuit used for all attachments equipped with cylinders or other hydraulic components. Consists of valves, controls and hydraulic lines. 		

Service Refill Capacities

Fuel Tank	144 L	38 gal
Hydraulic System	170 L	45 gal

Tires

Standard	370/75-28 Duraforce MT
Optional	370/75-28 Foam Filled 13.00 x 24 Foam Filled 13.00 x 24 12 PR

Transmission Speeds

Forward	4 speed
Reverse	3 speed

Boom Performance

Boom Up	10.9 Seconds
Boom Down	9.5 Seconds
Tele In	17 Seconds
Tele Out	13.7 Seconds

Axles

- Trunnion mounted planetary 55 degree steer axles.
- Integral steer cylinder.
- High bias limited slip differential on front axle.

Brakes

- Service Brakes are inboard wet disc brakes on front and rear axles.
- Parking Brakes are spring-applied hydraulic release on front axle. Light on dash indicates when brake is on.

Work Tools

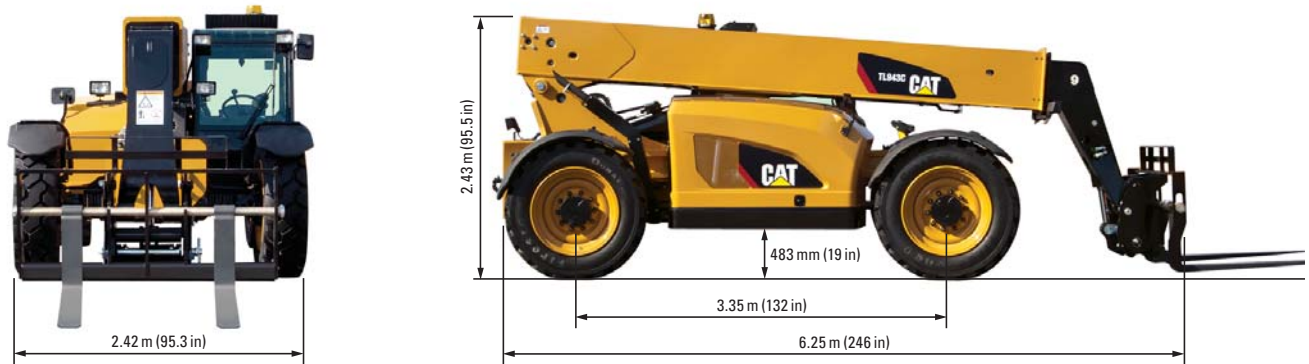
	Includes Auxiliary Electrics	Includes Auxiliary Electrics
Hydraulic IT Coupler		
Pallet Forks	(2) 1525 mm, 60 mm x 150 mm (2) 1220 mm, 60 mm x 100 mm (2) 1220 mm, 60 mm x 125 mm	(2) 60 in, 2.36 in x 6 in (2) 48 in, 2.36 in x 4 in (2) 48 in, 2.36 in x 5 in
Lumber Forks	(2) 1525 mm, 45 mm x 180 mm (2) 1829 mm, 50 mm x 150 mm	(2) 60 in, 1.75 in x 7 in (2) 72 in, 2 in x 6 in
Cubing Forks	(2) 1220 mm, 50 mm x 50 mm	(2) 48 in, 2 in x 2 in
Carriages:		
Standard Tilt	1270 mm	50 in
Wide Tilt	1829 mm	72 in
Side Shift	1220 mm	48 in
Standard Rotate	1270 mm	50 in
Wide Rotate	1829 mm	72 in
Swing	100°, 1829 mm, 4028 kg Capacity, 2268 kg Swung	100°, 72 in, 9,000 lb Capacity, 5,000 lb Swung
Dual Fork Positioning	1270 mm	50 in



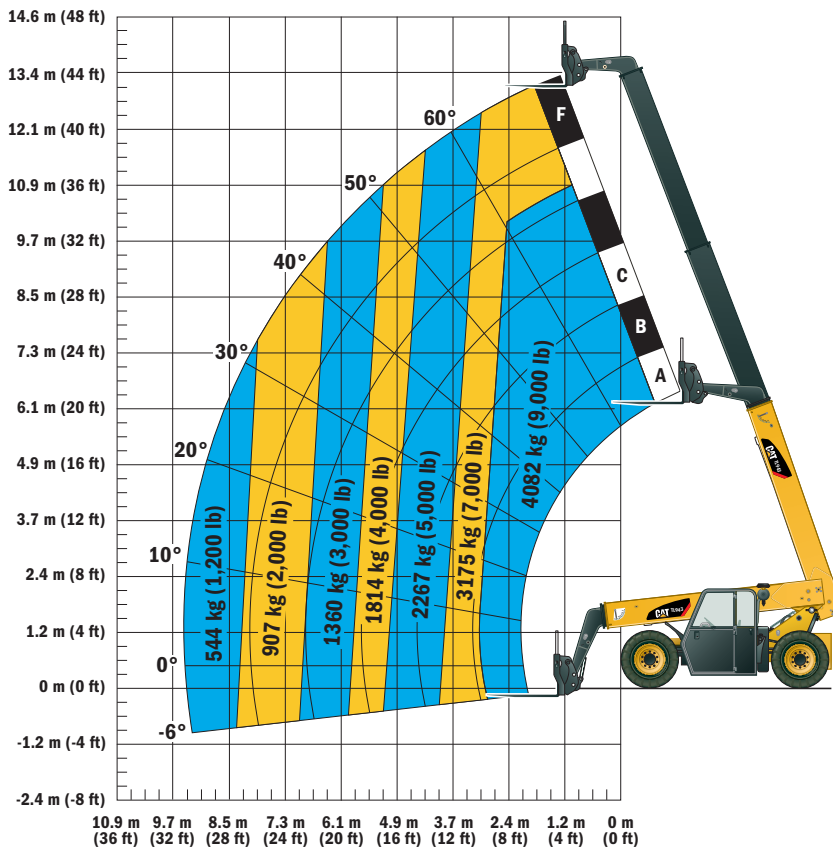
TL943C Telehandler

Dimensions

All dimensions are approximate.



Load Chart and Dimensions



IMPORTANT

Rated lift capacities shown are with machine equipped with carriage and pallet forks. The machine must be level on a firm surface with undamaged, properly inflated tires. Machine specifications and stability are based on rated lift capacities at specific boom angles and boom lengths. (If specifications are critical, the proposed application should be discussed with your dealer.)

DO NOT exceed rated lift capacity loads, as unstable and dangerous machine conditions will result.

DO NOT tip the machine forward to determine the allowable load.

Use only approved attachments with proper material handler model/attachment load capacity charts displayed in the operator's cab. OSHA requires all rough terrain forklift operators be trained according to OSHA 29 CFR 1910.178 (1).

Due to continuous product improvements, machine specifications and/or equipment changes may be made without prior notification. This machine meets or exceeds ANSI/ITSDF B56.6-2005 as originally manufactured for intended applications.

For more complete information on Cat products, dealer services, and industry solutions, visit us on the web at www.cat.com

AHQ6851-00 (07-2012)

©2012 Caterpillar
All rights reserved.
Printed in U.S.A.

Materials and specifications are subject to change without notice. Featured machines in photos may include additional equipment. See your Cat dealer for available options.

CAT, CATERPILLAR, SAFETY.CAT.COM, their respective logos, "Caterpillar Yellow" and the POWER EDGE trade dress, as well as corporate and product identity used herein, are trademarks of Caterpillar and may not be used without permission.

