



# Cat<sup>®</sup> MD6750

## Rotary Blasthole Drill

### Specifications

#### Mainframe Components

##### Air Compressor

101.9 m <sup>3</sup> /min (3600 icfm) free air and 2 552 kPa (80 psi)	Standard
---	----------

##### Leveling Jacks (4)

Automatic Leveling System	Standard
Jack Size	229 mm (9 in) dia x 1 676 mm (66 in) stroke
Jack Pad Diameter	1 118 mm (44 in)
Machine Lift - Rear	1 143 mm (45 in)
Machine Lift - Front	1 016 mm (40 in)
Operating Leveling Grade	to 19%

##### Lubrication

Automatic Single Line PLC Controlled	Standard
--------------------------------------	----------

#### Drilling

Hole Diameter	273 - 444 mm (10.75 - 17.5 in)
Hole Depth - Single Pass Std	18.29 m (60 ft)

#### Lower Works

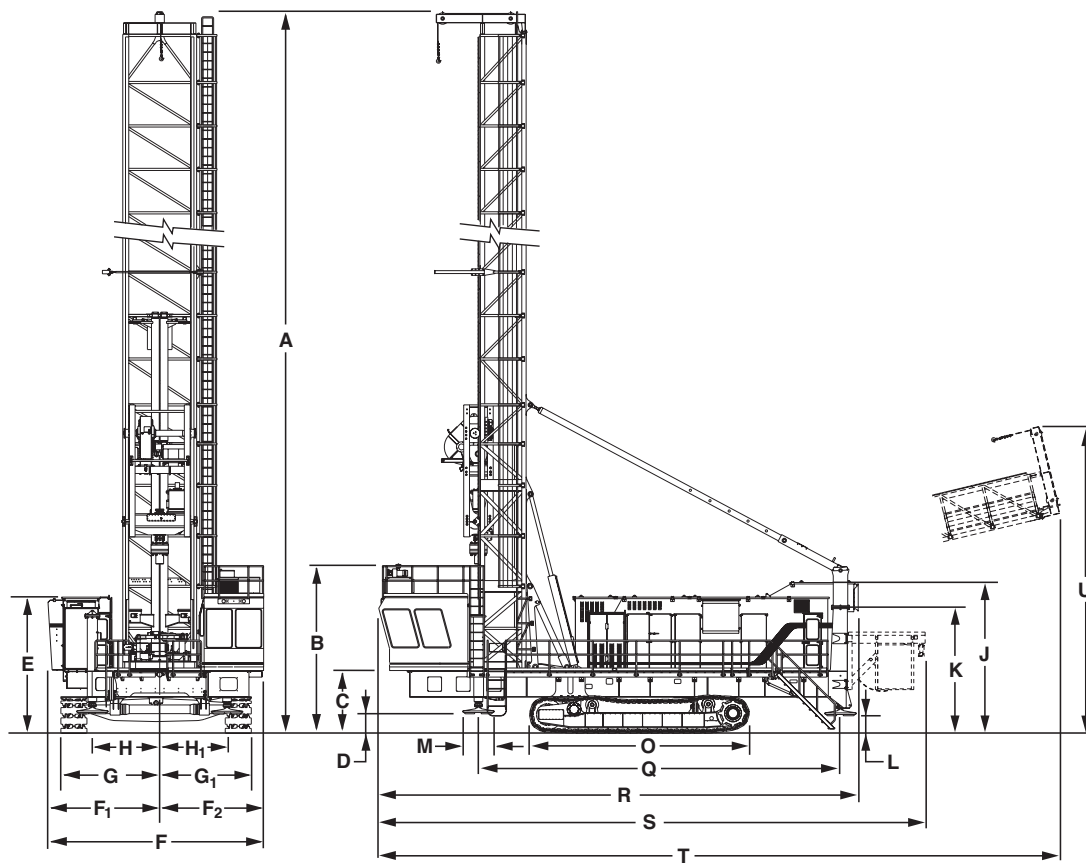
##### Crawler Mounting

Dual Axles	Fixed Rear & Pivotal Front
Overall Length	7.75 m (25 ft 5 in)
Overall Tread Width - Standard	6.68 m (21 ft 11 in)
Tread Widths - Standard	914 mm (36 in)
Tread Widths - Optional Wide Links	1 067 mm (42 in)

##### Propel

Chainless Hydraulic Drive, Counter-rotating Tracks, Crawler-mounted Disc Brakes and Tow Brake Release	Standard
Propel Speed	1.45 kph (0.9 mph)
Operating Propel Guide	<sup>3</sup> 25%

# Rotary Blasthole Drill—MD6750



## Optimal Working Ranges

A	Overall height w/mast for 60' single pass	32.36 m (106 ft 2 in)
B	Height to top of handrails on operator cab	5.92 m (19 ft 5 in)
C	Groundline to top of deck	2.18 m (7 ft 2 in)
D	Groundline to bottom of rear jack pads	0.53 m (1 ft 9 in)
E	Groundline to top of machinery house roof	4.77 m (15 ft 8 in)
F	Overall width of machine	7.65 m (25 ft 1 in)
F <sub>1</sub>	Centerline of machine to LH side	3.91 m (12 ft 10 in)
F <sub>2</sub>	Centerline of machine to RH side	3.73 m (12 ft 3 in)
G	Centerline of machine to LH outside edge of 914 mm (36 in) tracks	3.47 m (14 ft 4.5 in)
G <sub>1</sub>	Centerline of machine to RH outside edge of 914 mm (36 in) tracks	3.21 m (10 ft 6.5 in)
H	Centerline of machine to centerline of LH rear leveling jack	2.36 m (7 ft 9 in)
H <sub>1</sub>	Centerline of machine to RH outside edge of 914 mm (36 in) tracks	2.36 m (7 ft 9 in)
J	Height to top of machinery house pressurizing unit	5.28 m (17 ft 4 in)
L	Groundline to bottom of front jack panels	0.66 m (2 ft 2 in)
M	Diameter of jack pads	1.12 m (44 in)
O	Overall length of crawlers	7.75 m (25 ft 5 in)

Q	Centerline of rear jacks to centerline of front jacks	12.70 m (41 ft 8 in)
R	Overall length of machine	16.21 m (53 ft 2 in)
S	Overall length of machine with optional cable reel	19.81 m (65 ft)
T	Overall length of machine w/mast for 60' single pass drill depth - mast at rest	32.49 m (106 ft 7 in)
U	Groundline to high point w/mast for 60' single pass drill depth - mast at rest	9.60 m (31 ft 6 in)

## Weight\*

Base machine	158 730 kg (350,000 lbs)
Average working weight	183 673 kg (405,000 lbs)

\* Type and number of options will affect machine weight.

# Rotary Blasthole Drill—MD6750

## Mast Components

### Mast

Standard mast for drill pipe & one pipe rack	18.29 m (60 ft)
Computer analyzed, HD tubular lattice construction with back braces	
Raising and Lowering	(2) 220 mm (9 in) diameter hydraulic cylinders
Angle Hole Drilling	<sup>1</sup> 25° off vertical in 5° increments

### Hoist/Pulldown

Chainless rack-and-pinion system driven by head-mounted excavator grade DC motor	
Bit Loading	74 800 kg (165,000 lbs)
Feed Rate	7.62 m/min (to 25 fpm)
Hoist Rate	30.48 m/min (to 100 fpm)
Lowering Rate	30.48 m/min (to 100 fpm)
Auxiliary Winch - Std. Capacity	5 443 kg (to 12,000 lbs)

### Pipe Racks

Single Rack	Standard
Max drill pipe diameters with 25.4 mm (1 in) wall thickness	
1 Pipe Rack	273-445 mm (10.75-17.5 in)
2 Pipe Racks	273-445 mm (10.75-17.5 in)
4 Pipe Racks	273 mm (to 10.75 in)

### Rotary Drive

Rotary Drive - Continuous Output	153 kw (205 hp)
Bit Maximum Speed	120 rpm

## Electrical

### Equipment

Static DC Variable Output

### Power Requirements

Voltage <sup>3</sup>3 Phase, 60 Hz, 4,160V

### Main Electrical Systems

Air Compressor/AC Induction Motor	
Dual Shaft	522-746 kw (700-1000 hp) @ 475V
Rotary Drive - DC Motor (205 continuous output HP)	145 kw (195 hp) @ 475V
Hoist/Pulldown - DC Motor (205 continuous output HP)	145 kw (195 hp) @ 475V
Main Hydraulic Oil Pumps - Driven from Main Air Compressor Motor	186.4 kw (250 hp) Nominal
Machinery House Pressurization - @ 530 m <sup>3</sup> /min (18,700 cfm)	15 kw (20 hp) @ 460V with 2.2 kw (3 hp) bleed fan
Operator Cab Pressurization with Heater and Air Conditioner	Standard
Compressor Radiator Fan - AC-TEFC Motor	15 kw (20 hp) @ 460V
Lighting and Control	120V

### Transformer Capacity

Standard Machine - Drive	3 Phase, 500 KVA Dry-Type
Standard Machine - Auxiliary	3 Phase, 250 KVA Dry-Type

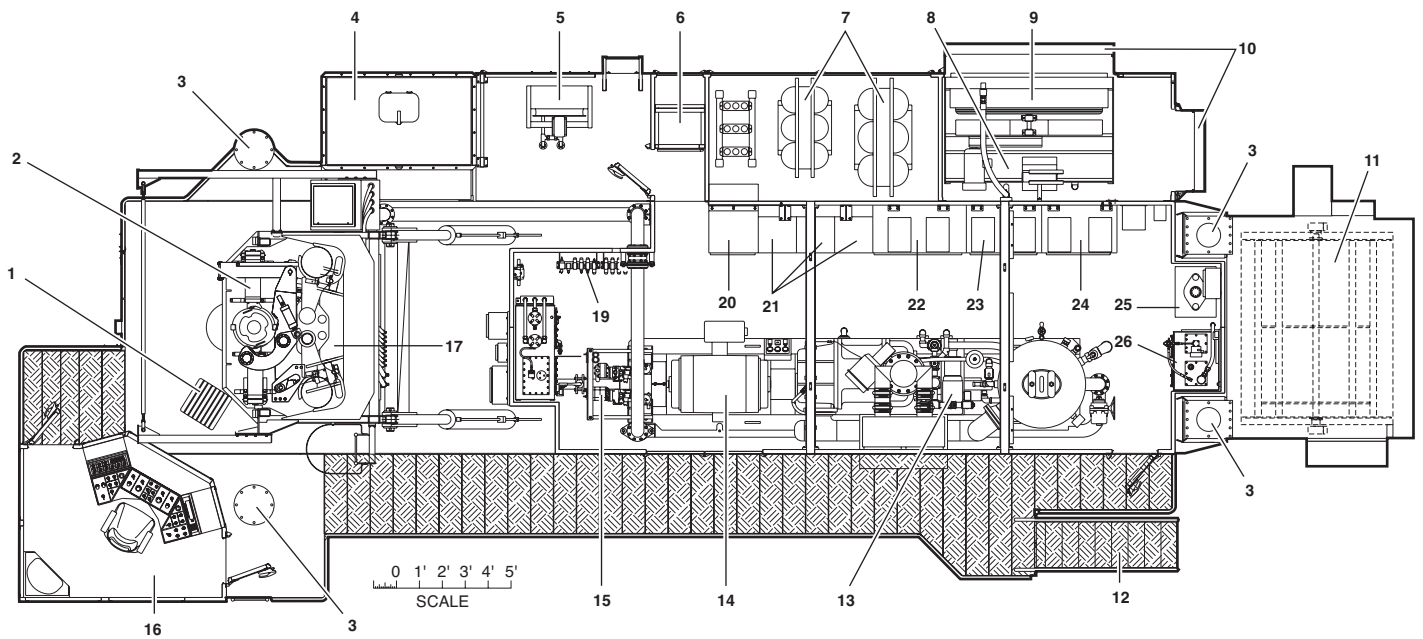
<sup>1</sup> With optional angle hole equipment.

<sup>2</sup> Standard conditions - Sea level and 26.7° (80° F) inlet temperature 60 Hz electrical power

<sup>3</sup> Stability limitations apply.

<sup>4</sup> For alternate power configurations consult Caterpillar.

# Rotary Blasthole Drill—MD6750



## Components

1. Bit Viewing Hatch	9. Hydraulic Oil Cooler & Guard	18. Hydraulic Oil Reservoir
2. Tool Wrench	10. Cold Weather Damper (optional)	19. Hydraulic Valves
3. Leveling Jack (4)	11. Cable Reel (optional)	20. Air Compressor Motor Control Center (MCC)
4. Water Injection Dust Control - 3,785 L (1,000 gal)	12. Boarding Stairs	21. Low Voltage Motor Control Center (MCC)
5. Hydraulic Oil Cooler	13. Main Air Compressor Package	22. Programmable Controller (PLC)
6. High Voltage Disconnect	14. Main Drive Motor	23. Rotary Drive Control Cabinet
7. Transformers	15. Hydraulic Pumps & Gearcase	24. Hoist/Pulldown Drive Control Cabinet
8. Heater (optional)	16. Operator's Cab	25. Isolator
	17. Pipe Racks - 1 Standard (2-4 optional)	26. Auto-Lube System

## Options

16.76 m (55 ft) or 19.81 m (65 ft) Alternate Mast Lengths	Front Tow Bar
Angle Hole Drilling	Hydraulic Breakout Wrench
Automatic Fire Suppression Systems	Hydraulic Drive Cable Reel
Cold Weather Options	Programmed Drill Control
Dry Dust Control System	FastFil System for Oils and Lubricants
Water Injection Dust Control System	Remote Propel
Rotary Shock Coupling	

For more complete information on Cat products, dealer services, and industry solutions, visit us on the web at [mining.cat.com](http://mining.cat.com) and [www.cat.com](http://www.cat.com)

© 2012 Caterpillar Inc.  
All rights reserved

CAT, CATERPILLAR, their respective logos, "Caterpillar Yellow" and the "Power Edge" trade dress, as well as corporate and product identity used herein, are trademarks of Caterpillar and may not be used without permission.

AEHQ6545

